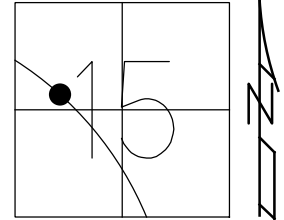


O.D.O.T. DISTRICT 2 SURVEY OFFICE (USE ONLY)

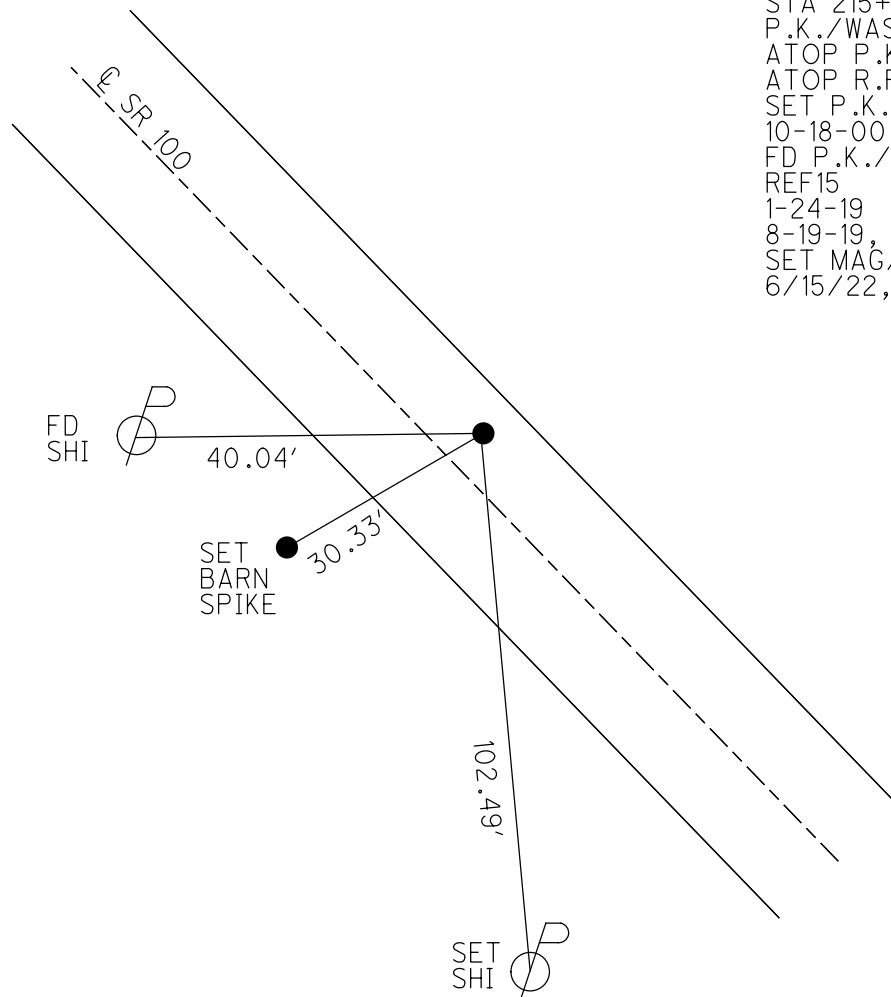
PERSONNEL _____ REFERENCE NO. 15 SHEET 19 OF 46
 NOTES RHOADES DATE 6/15/22 ROUTE SR 100
 H.C. AUBLE WEATHER SUNNY COUNTY SENECA
 R.C. WHITAKER TEMP. 82° TOWNSHIP EDEN
 DWG BY WHITAKER PID 95778 SECTION 15
 T 1 N R 15 E

TYPE MONUMENT MAG/WASHER
 ON SURFACE - ~~BELOW~~ ON
 OFFSET \odot PAVEMENT 7.3' ~~RT~~ : RT
3.5' TO RT EDGE PAVEMENT
 STATION: 216+95

HORIZ.DATUM: NAD83(2011) GEOID: 2012A
 GRID: NORTHING: 503144.733 EASTING: 1794983.214



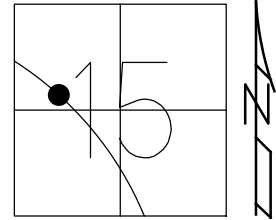
RECORD: P.I.
 $\Delta = 11^{\circ}51' 40''$
 STA 215+55.85
 P.K./WASHER
 ATOP P.K./WASHER
 ATOP R.R. SPIKE
 SET P.K./WASHER
 10-18-00, MRC
 FD P.K./WASHER
 REF15
 1-24-19
 8-19-19, JFO
 SET MAG/WASHER
 6/15/22, DSA



O.D.O.T. DISTRICT 2 SURVEY OFFICE (USE ONLY)

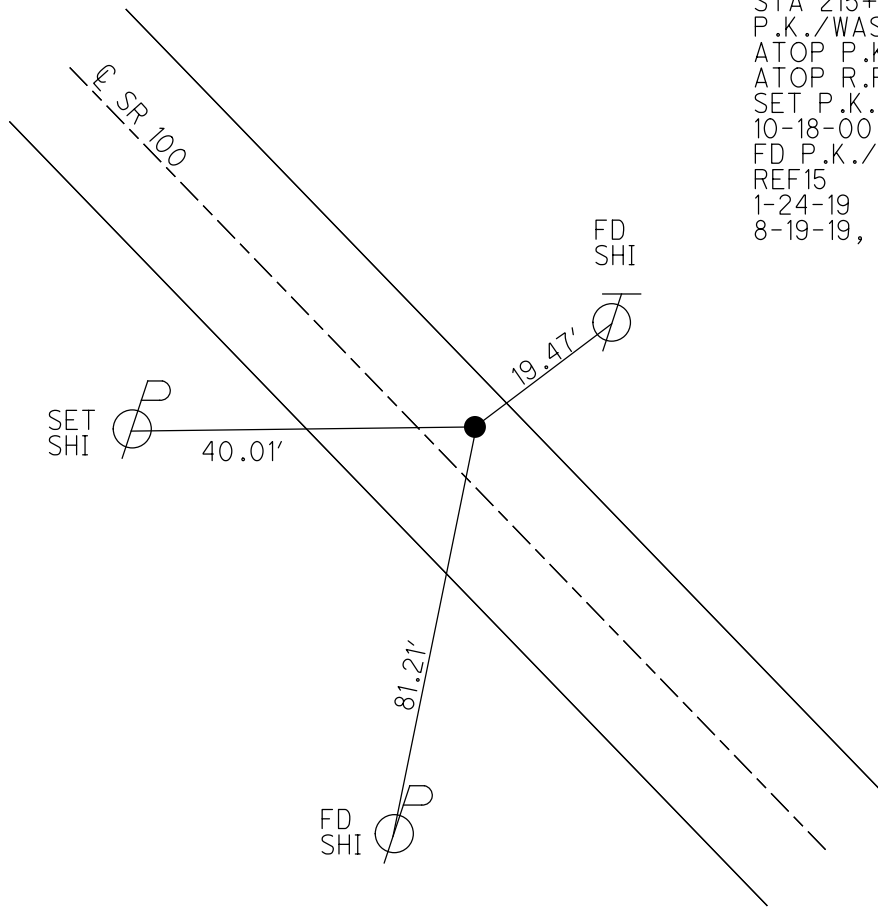
PERSONNEL _____ REFERENCE NO. 15 SHEET 19 OF 38
 NOTES CANTERBURY DATE 7-25-00 ROUTE SR 100
 H.C. BARNHISEL WEATHER SUNNY COUNTY SENECA
 R.C. MOSER TEMP. 82° TOWNSHIP EDEN
 _____ SECTION 15
 DWG BY NIESE PID 107060 T 1 N R 15 E

TYPE MONUMENT P.K./WASHER
 ON SURFACE - ~~BELOW~~ ON
 OFFSET ☉ PAVEMENT 7.3' ~~LT~~ : RT
3.5' TO RT EDGE PAVEMENT
 STATION: 216+95



HORZ.DATUM: NAD83(2011) GEOID: 2012A
 GRID: NORTHING: 503144.733 EASTING: 1794983.214

RECORD: P.I.
 $\Delta=11^{\circ}51'40''$
 STA 215+55.85
 P.K./WASHER
 ATOP P.K./WASHER
 ATOP R.R. SPIKE
 SET P.K./WASHER
 10-18-00, MRC
 FD P.K./WASHER
 REF15
 1-24-19
 8-19-19, JFO



O.D.O.T. DISTRICT 2 SURVEY OFFICE

PERSONNEL _____

REFERENCE NO. 15

SHEET 17 OF 31

NOTES CANTERBURY

H.C. BARNHISEL

R.C. MOSEB

DATE 7-25-00

WEATHER SUN

TEMP. +82°

ROUTE #100

COUNTY SENECA

TOWNSHIP Eden

SECTION 15

T 1 N R 15 E

TYPE MONUMENT P.K. + WASHER

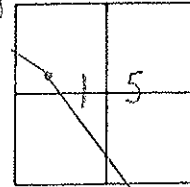
ON SURFACE - BELOW SURFACE

LEFT - Q. PAV'T. - RIGHT 7.3' RT Q. PAV'T.

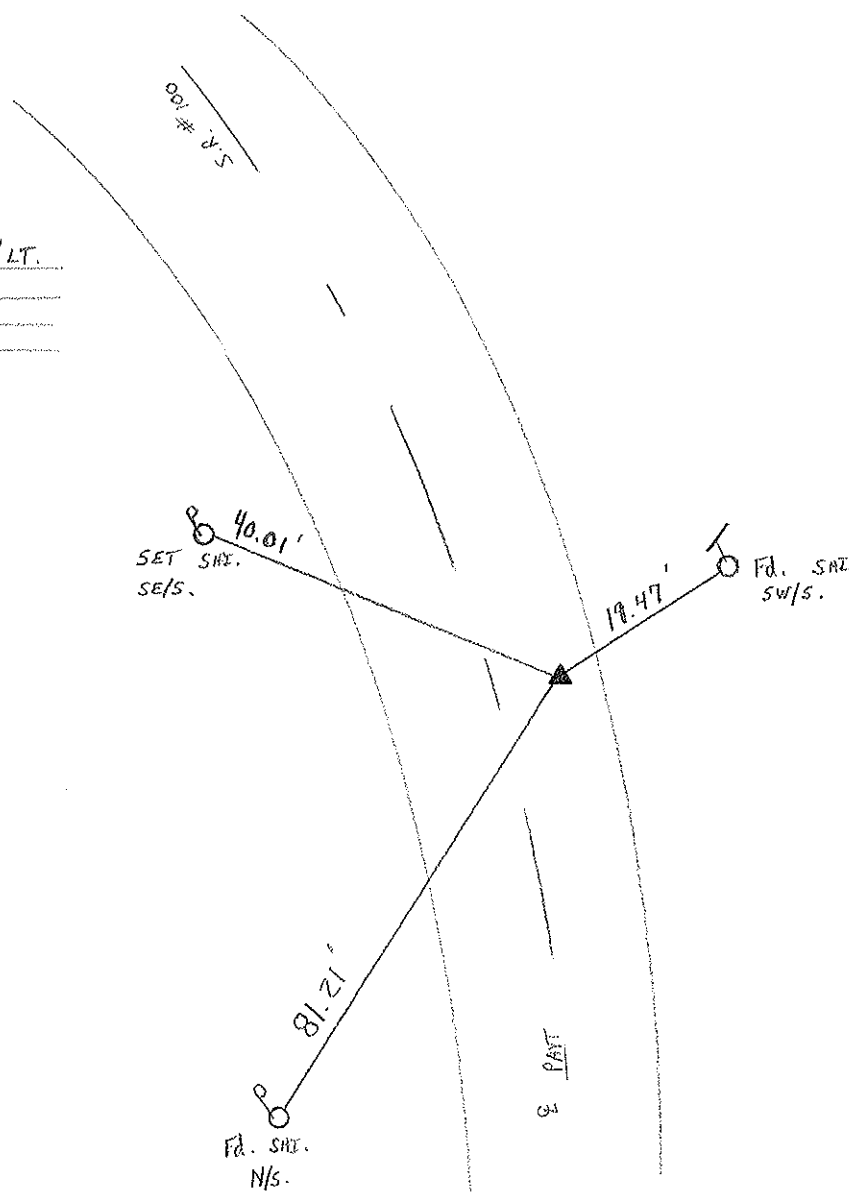
3.5' TO RT EDGE PAVEMENT

S.L.M. 216 + 95

RESET P.K. + WASHER
 10-18-00
 M.R.C.



RECORD: P.T. $\Delta = 11^{\circ} 51' - 40''$ LT.
 STA 215 + 55.85
 P.K. & WASHER ATOP SAME
 ATOP R.R. SPR.



O.D.O.T. DISTRICT 2 SURVEY OFFICE

PERSONNEL

NOTES CROWIN

H.C. RIPPLE

R.C. BARBOUR MEAS.

GEYMAN

REFERENCE NO. 15

DRAWN 12/20/88

DATE 11-30-89

WEATHER Cloudy Windy

TEMP. 35°

SHEET 16 OF

ROUTE #100

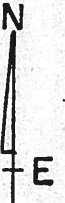
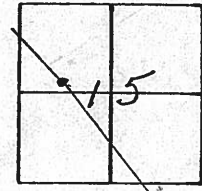
COUNTY SENECA

TOWNSHIP EDEN

SECTION 15

T 1 N R 15 E

TYPE MONUMENT PK Washer
 ON SURFACE - BELOW SURFACE
 LEFT - ¢ PAV'T. - RIGHT 6 1/2' RT. ¢
 TO EDGE PAVEMENT
 S.L.M. STA. 215+55.85



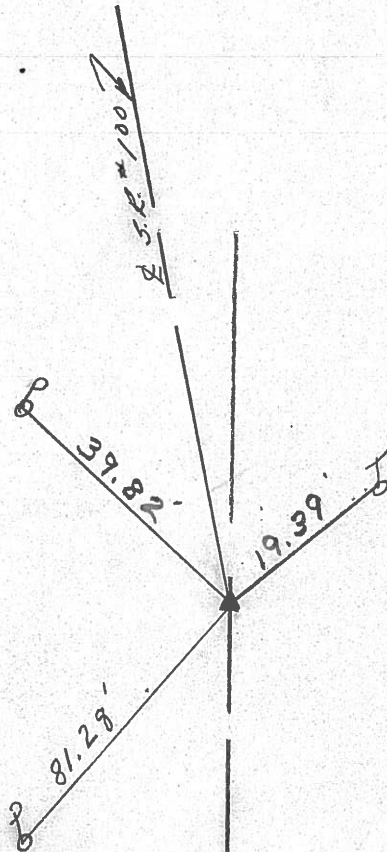
P.I.

Δ = 11° 51' 40" Lt. Meas.

215+55.85

P.K. & WASHER ATOP SAME

ATOP R.R. SPIKE



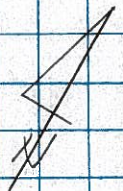
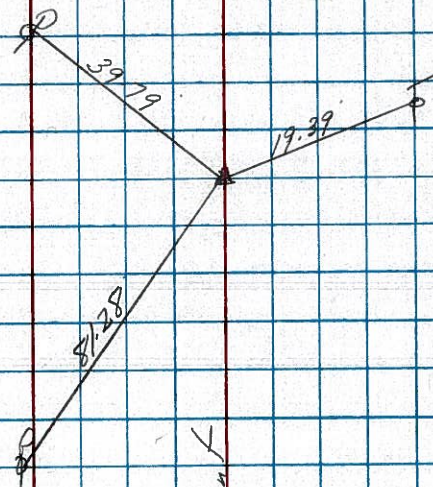
| PERSONNEL | TITLE | PERSONNEL | TITLE |
|-----------|-------|-----------|-------|
| Cronin | | Barbour | |
| Ripple | | | |
| Geyman | | | |
| Mosser | | | |

COUNTY Seneca DATE 7/27/82
 S. R. # 100 WEATHER sunny
 SEC Bridge - Sen. 100 - 03.90 TEMP. 90°

DESCRIPTION Ties for Control Points JOB NO. _____
 LEFT CENTER LINE SURVEY RIGHT

#15

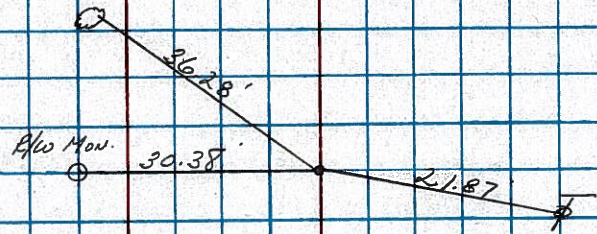
$\Delta = 11^{\circ} 51' 40''$ - Lt
 P.I.
 215 + 55.85 Meas
 Fd P.K. No. 1 & washer on surface
 6' E. Rt. of P & Pavement



14-A

#14

P.O.T
 193 + 58.94 Meas
 Fd P.K. with head of
 2.5' E. of P.V.T.



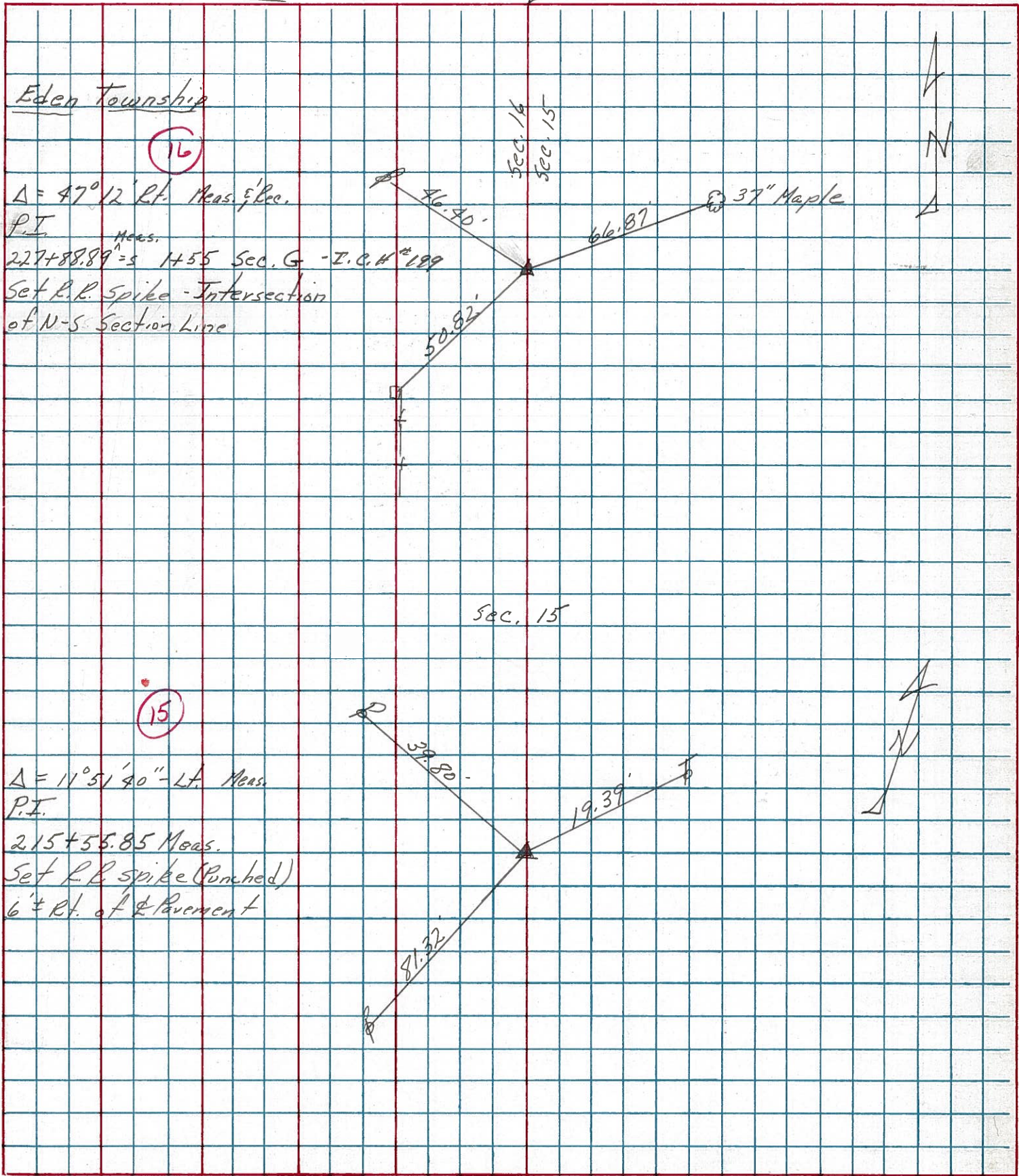
S. R. #100

Eden Twp Sec 15

| PERSONNEL | TITLE | PERSONNEL | TITLE |
|-----------|-------|-----------|-------|
| CRONIN | | SCHNEIDER | |
| RIPPLE | | MOSSER | |
| | | BARBOUR | |

COUNTY SENECA DATE 3/20/78
 S. R. # 100 WEATHER sunny - windy
 SEC MELMORE - NORTH TEMP. 45°

DESCRIPTION TIES FOR CONTROL POINTS JOB NO. _____



Eden Township

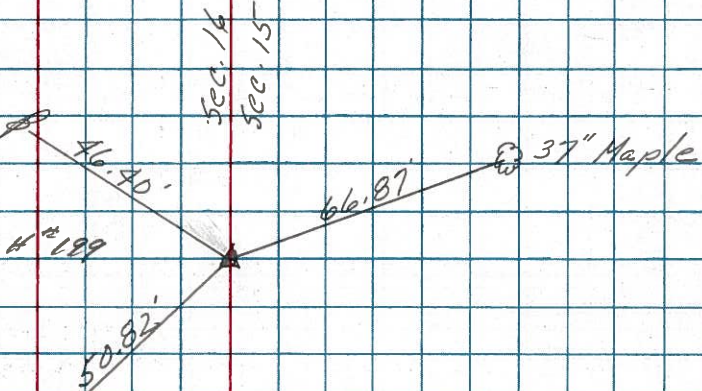
16

$\Delta = 47^{\circ}12'$ Rt. Meas. & Rec.

P.I.

227+88.89^{Meas.} = S 1455 Sec. G - I.C.H. #199

Set R.R. Spike - Intersection of N-S Section Line



15

$\Delta = 11^{\circ}51'40''$ - Lt. Meas.

P.I.

215+55.85 Meas.

Set R.R. spike (Punched) 6' ± Rt. of Pavement

