

O.D.O.T. DISTRICT 2 SURVEY OFFICE (USE ONLY)

PERSONNEL

REFERENCE NO. 16

SHEET 20 OF 46

NOTES RHOADES

DATE 7/12/21

ROUTE SR 100

H.C. AUBLE

WEATHER OVERCAST

COUNTY SENECA

R.C. NIESE

TEMP. 72°

TOWNSHIP EDEN

SECTION 15

DWG BY WHITAKER

PID 95778

T 1 N R 15 E

TYPE MONUMENT MAG/WASHER

ON SURFACE - ~~BELOW~~ ON

OFFSET \varnothing PAVEMENT 26.4' ~~LT~~ : RT

8.9' TO WEST EDGE PAVEMENT

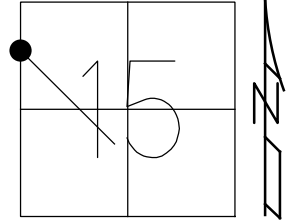
STATION: 227+21

HORZ. DATUM: NAD83(2011)

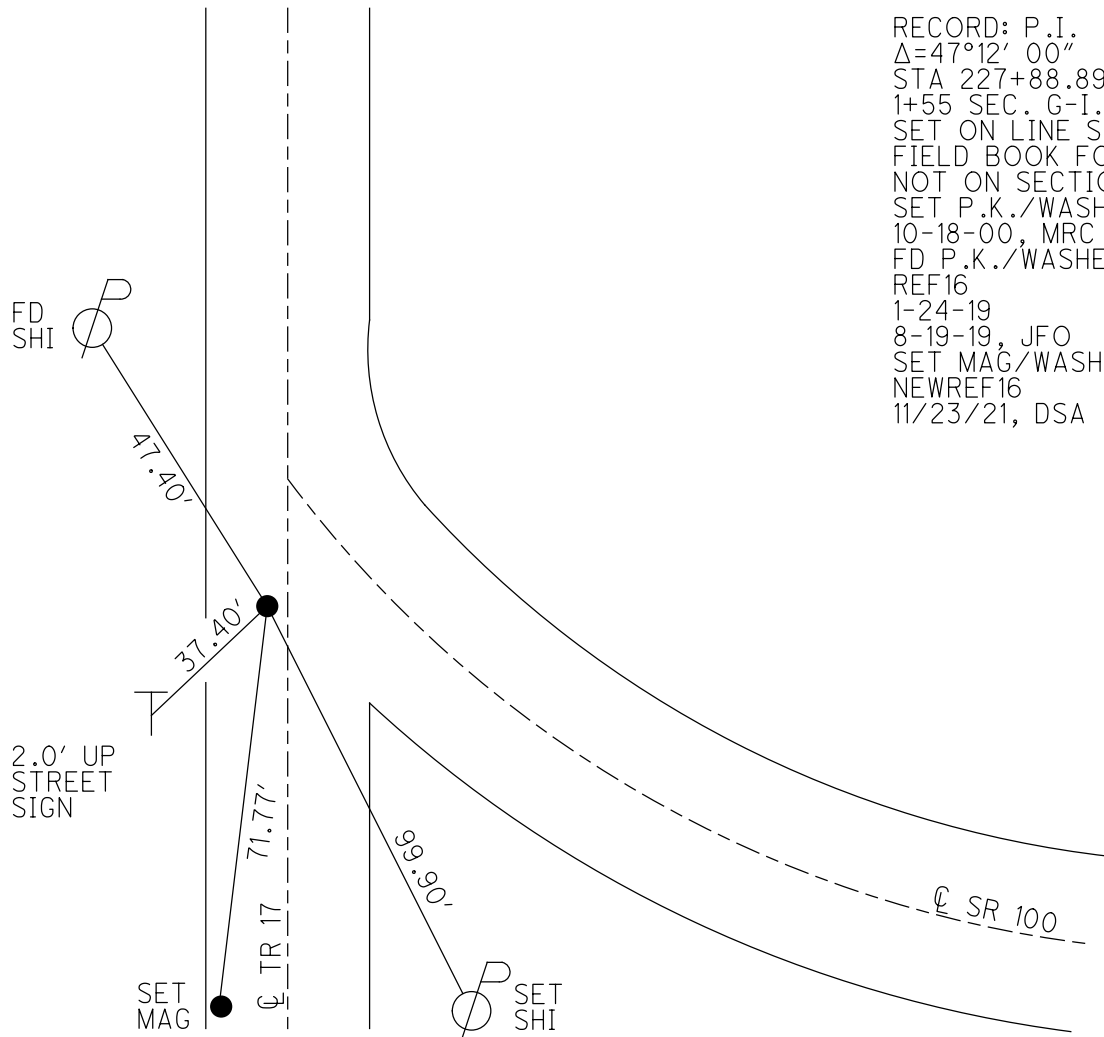
GEOID: 2012A

GRID: NORTHING: 503854.796

EASTING: 1794232.529



RECORD: P.I.
 $\Delta=47^{\circ}12' 00''$
 STA 227+88.89
 1+55 SEC. G-I.C.H. #199
 SET ON LINE SHOWN IN
 FIELD BOOK FOR THIS SEC.
 NOT ON SECTION LINE
 SET P.K./WASHER
 10-18-00, MRC
 FD P.K./WASHER
 REF16
 1-24-19
 8-19-19, JFO
 SET MAG/WASHER
 NEWREF16
 11/23/21, DSA



O.D.O.T. DISTRICT 2 SURVEY OFFICE (USE ONLY)

PERSONNEL

REFERENCE NO. 16

SHEET 20 OF 38

NOTES CANTERBURY

DATE 7-25-00

ROUTE SR 100

H.C. BARNHISEL

WEATHER SUNNY

COUNTY SENECA

R.C. MOSER

TEMP. 82°

TOWNSHIP EDEN

SECTION 15

DWG BY NIESE

PID 107060

T 1 N R 15 E

TYPE MONUMENT LG R.R. SPIKE

~~ON SURFACE~~ - BELOW 3"

OFFSET Q PAVEMENT 26.4' ~~LT~~ : RT

8.9' TO WEST EDGE PAVEMENT ±15' LT OF LT E.O.P. SR#100

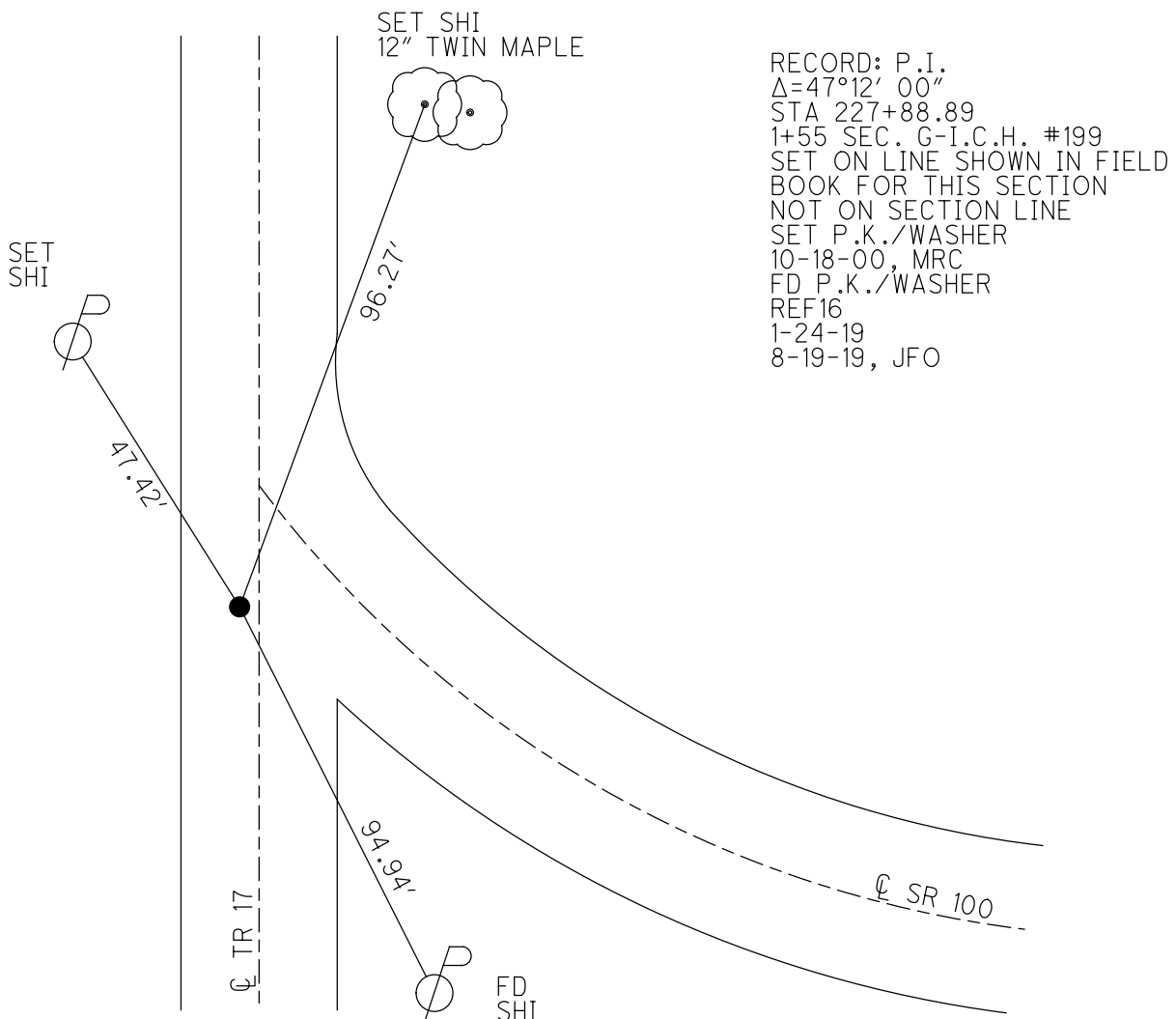
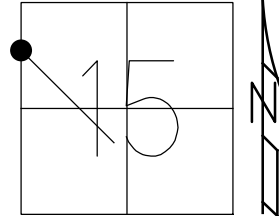
STATION: 227+21

HORIZ.DATUM: NAD83(2011)

GEOID: 2012A

GRID: NORTHING: 503854.796

EASTING: 1794232.529



RECORD: P.I.
 $\Delta=47^{\circ}12' 00''$
 STA 227+88.89
 1+55 SEC. G-I.C.H. #199
 SET ON LINE SHOWN IN FIELD
 BOOK FOR THIS SECTION
 NOT ON SECTION LINE
 SET P.K./WASHER
 10-18-00, MRC
 FD P.K./WASHER
 REF16
 1-24-19
 8-19-19, JFO

O.D.O.T. DISTRICT 2 SURVEY OFFICE

PERSONNEL _____

REFERENCE NO. 16

SHEET 18 OF 31

NOTES CANTERBURY

H.C. BARNHISEL

R.C. MOSEK

DATE 7-25-00

WEATHER SUN

TEMP. +82°

ROUTE #100

COUNTY SENECA

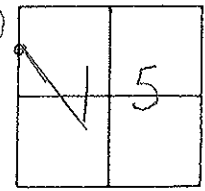
TOWNSHIP EDEN

SECTION 15

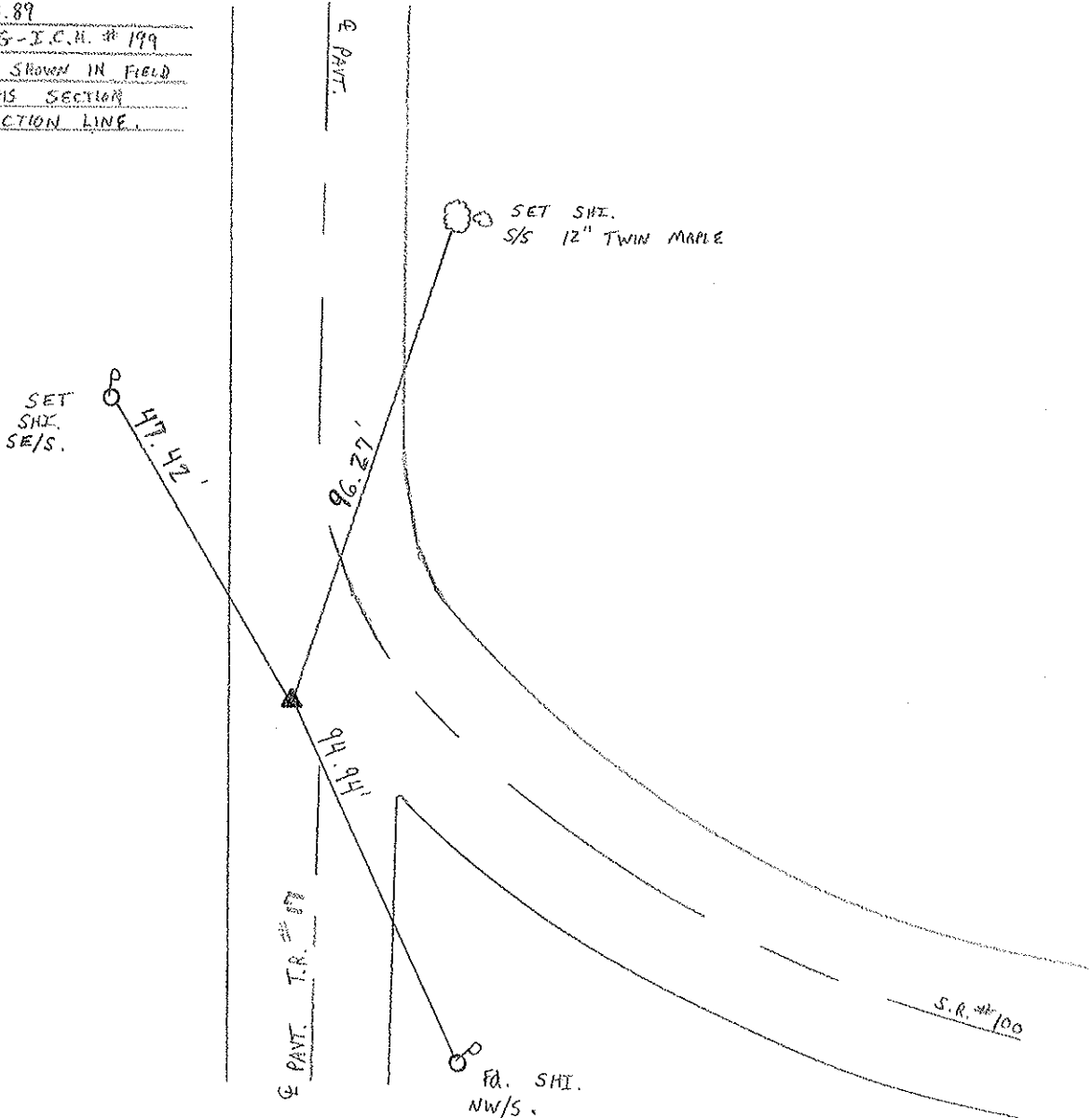
T.L.N.R. 15 E

TYPE MONUMENT LG. R.R. SPIKE
 ON SURFACE - BELOW 3" DOWN
~~LEFT - & PAV'T. - RIGHT~~ 26.4' RT &
8.9' TO WEST EDGE PAVEMENT T.R. #17,
S.L.M. 227+21

RESET P.R. + WASHER
 10-18-00
 M.R.C.



RECORD: P.I. A = 47°-12'-00" RT
STA 227+88.89
1+55 SEC. 6 - I.C.H. # 199
SET ON LINE SHOWN IN FIELD
BOOK FOR THIS SECTION
NOT ON SECTION LINE.



O.D.O.T. DISTRICT 2 SURVEY OFFICE

PERSONNEL

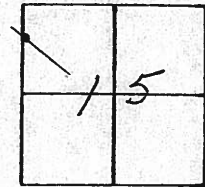
NOTES CRONIN
 H.C. RIPPLE
 R.C. BARBOUR MEAS.
GEYMAN

REFERENCE NO. 10
 DRAWN 12/20/88
 DATE 11-30-89
 WEATHER Cloudy Windy
 TEMP. 35°

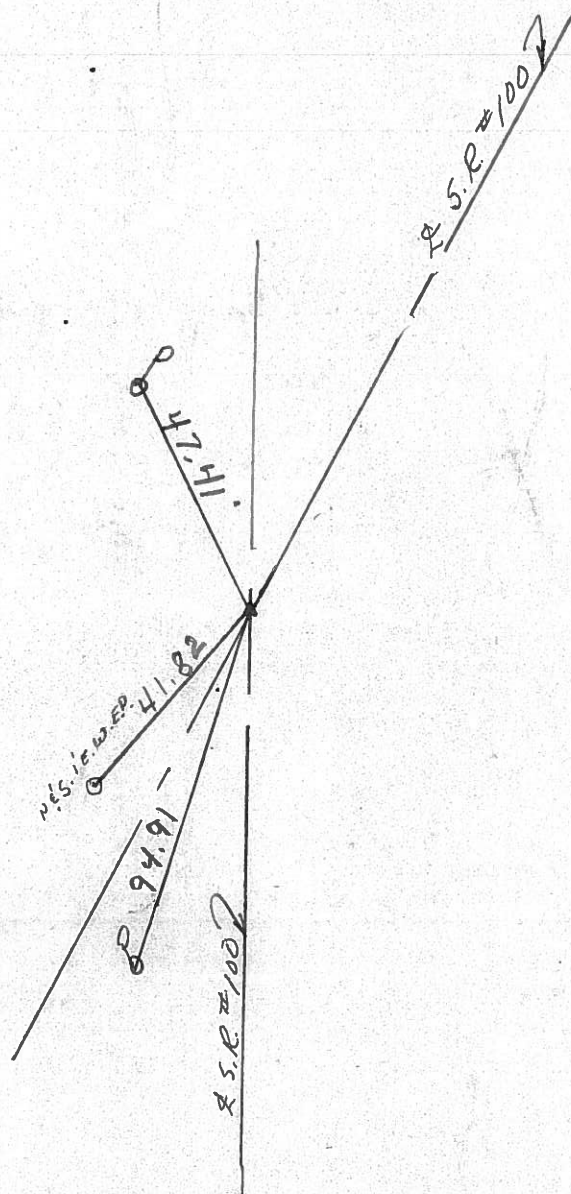
SHEET 17 OF

ROUTE #100
 COUNTY SENECA
 TOWNSHIP EDEN
 SECTION 15
 T. 1 N. R. 15 E.

TYPE MONUMENT R/e spike
 ON SURFACE - BELOW 13" below surface
 LEFT - ¢ PAV'T. - RIGHT 26' LT. &
 TO EDGE PAVEMENT
 S.L.M. STA. 227+88.89



P.I.
Δ = 47° 12' 00" RT. MEAS. & REC.
227+88.89 MEAS. = S
1+55 SEC. 6 - I.C.H. # 199
SET ON LINE SHOWN IN
FIELD BOOK FOR THIS SECTION
NOT ON SECTION LINE



PERSONNEL	TITLE	PERSONNEL	TITLE
CRONIN		SCHNEIDER	
RIPPLE		MOSSER	
		BARBOUR	

COUNTY SENECA

DATE 3/20/78

S. R. # 100

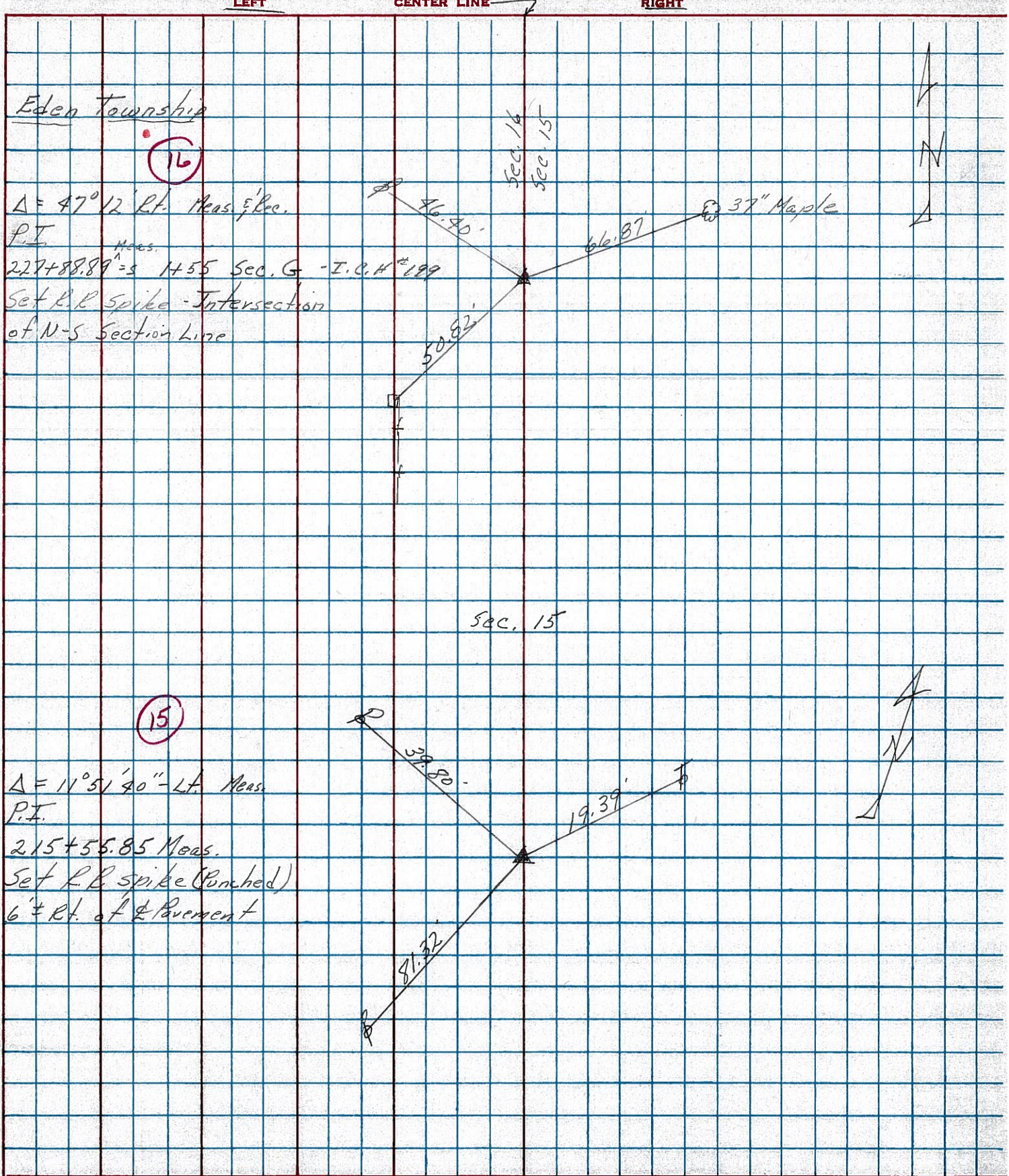
WEATHER SUNNY - WINDY

SEC. MELMORE - NORTH

TEMP. 45°

DESCRIPTION TIES FOR CONTROL POINTS

JOB NO. _____



Eden Township
 (16)

$\Delta = 47^\circ 12'$ Rt. Meas. & Rec.

P.I.

227+88.89 = S 1455 Sec. G - I.C.H. #199

Set R.R. spike - Intersection of N-S Section Line

Sec. 15

(15)

$\Delta = 11^\circ 51' 40''$ - Lt. Meas.

P.I.

215+55.85 Meas.

Set R.R. spike (Punched) 6' ± Rt. of Pavement