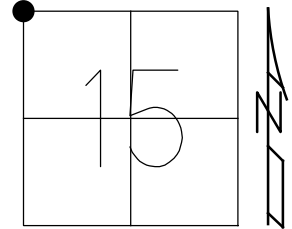


O.D.O.T. DISTRICT 2 SURVEY OFFICE (USE ONLY)

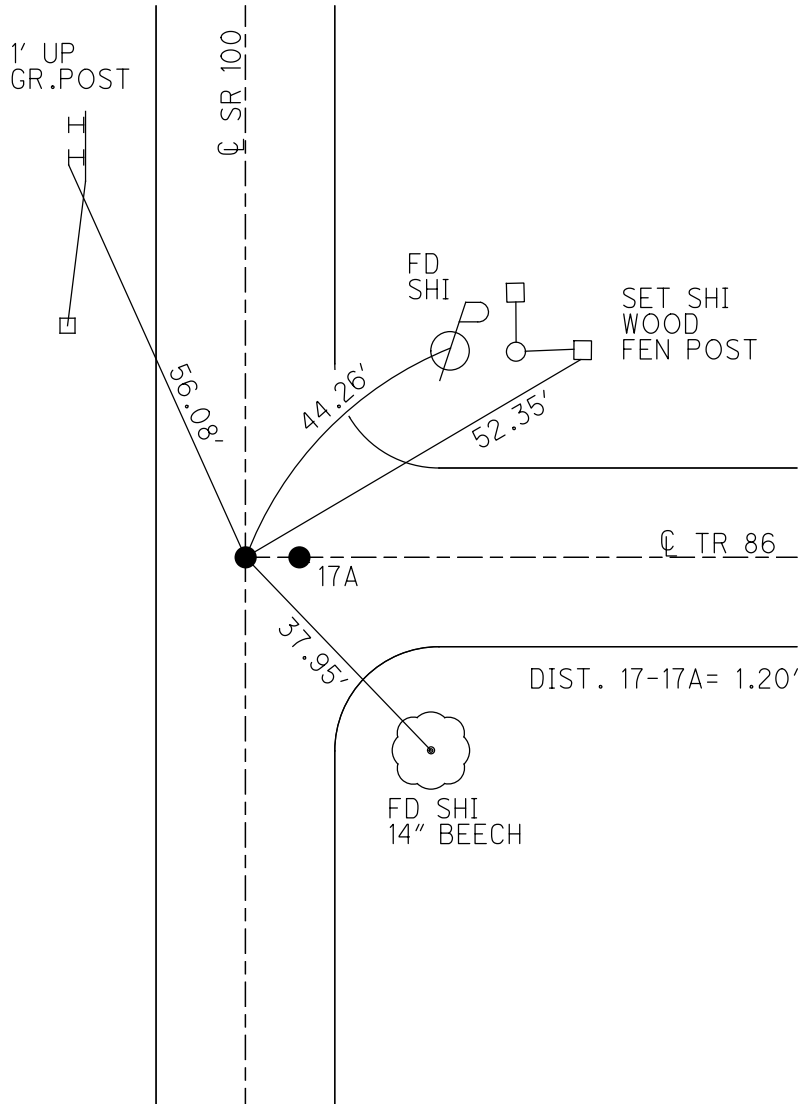
PERSONNEL \_\_\_\_\_ REFERENCE NO. 17 SHEET 21 OF 46  
 NOTES RHOADES DATE 7/12/21 ROUTE SR 100  
 H.C. AUBLE WEATHER OVERCAST COUNTY SENECA  
 R.C. NIESE TEMP. 72° TOWNSHIP EDEN  
 DWG BY WHITAKER PID 95778 SECTION 15  
 T 1 N R 15 E

TYPE MONUMENT MAG/WASHER  
 ON SURFACE - ~~BELOW~~ ON \_\_\_\_\_  
 OFFSET 0.5' LT : ~~RT~~  
10.1 TO LT EDGE PAVEMENT  
 STATION: 239+59



HORZ.DATUM: NAD83(2011) GEOID: 2012A  
 GRID: NORTHING: 505095.917 EASTING: 1794244.518

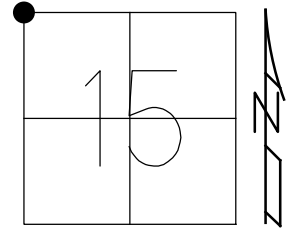
RECORD:  
 SECTION CORNER  
 FD GREENISH  
 GRANITE STONE  
 7"x8"x?  
 15" DOWN  
 ALSO FD PARTS  
 OF OLD STAKE  
 SET P.K./WASHER  
 4/25/84  
 FD P.K./WASHER  
 7/25/00  
 SET P.K./WASHER  
 10-18-00, MRC  
 FD MAG NAIL  
 REF17  
 1-24-19  
 8-19-19, JFO  
 FD P.K./WASHER  
 2" DOWN  
 REF 17  
 7/12/21, DSA  
 SET MAG/WASHER  
 NEWREF17  
 11/23/21, DSA



O.D.O.T. DISTRICT 2 SURVEY OFFICE (USE ONLY)

PERSONNEL \_\_\_\_\_ REFERENCE NO. 17 SHEET 21 OF 38  
 NOTES CANTERBURY DATE 7-25-00 ROUTE SR 100  
 H.C. BARNHISEL WEATHER SUNNY COUNTY SENECA  
 R.C. MOSER TEMP. 75° TOWNSHIP EDEN  
 DWG BY NIESE PID 107060 SECTION 15  
 T 1 N R 15 E

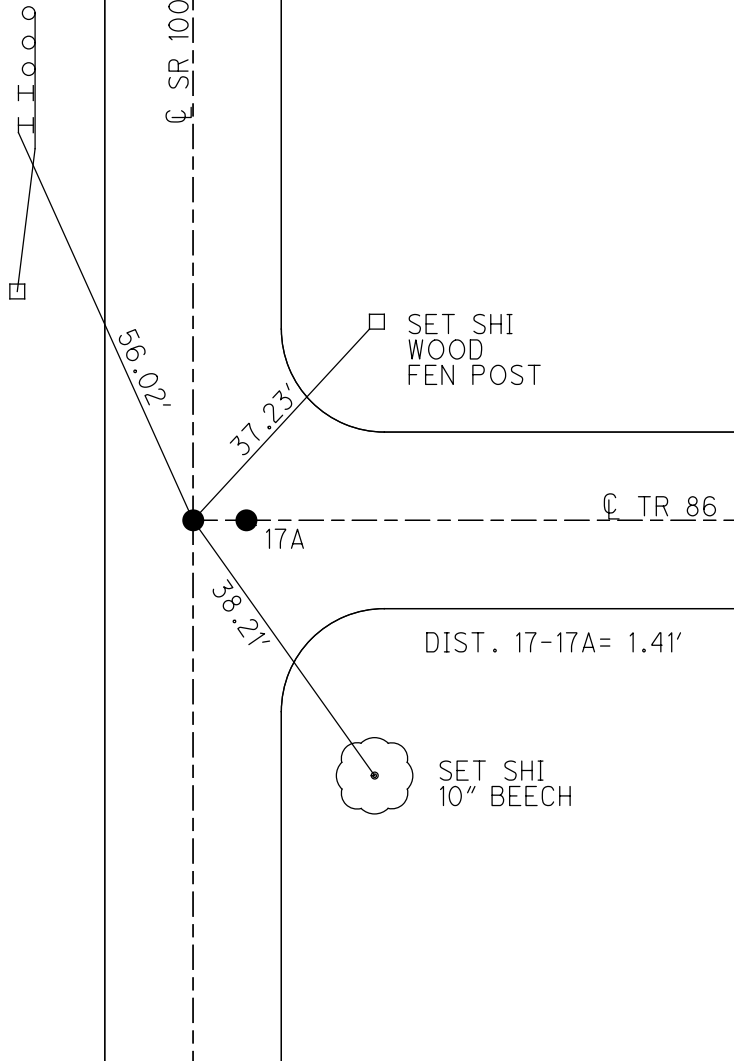
TYPE MONUMENT P.K./WASHER  
 ON SURFACE - ~~BELOW~~ ON \_\_\_\_\_  
 OFFSET  $\varnothing$  PAVEMENT 0.5' LT : RT  
10.1 TO LT EDGE PAVEMENT  
 STATION: 239+59



HORZ.DATUM: NAD83(2011) GEOID: 2012A  
 GRID: NORTHING: 505095.917 EASTING: 1794244.518

RECORD:  
 SECTION CORNER  
 FD GREENISH  
 GRANITE STONE  
 7"x8"x?  
 15" DOWN  
 ALSO FD PARTS  
 OF OLD STAKE  
 SET P.K./WASHER  
 4/25/84  
 FD P.K./WASHER  
 7/25/00  
 SET P.K./WASHER  
 10-18-00, MRC  
 FD MAG NAIL  
 REF17  
 1-24-19  
 8-19-19, JFO

CUT NOTCH  
 STEEL GR  
 POST



# O.D.O.T. DISTRICT 2 SURVEY OFFICE

PERSONNEL \_\_\_\_\_

REFERENCE NO. 17

SHEET 19 OF 31

NOTES CANTERBURY

H.C. BARNHISEL

R.C. MOSEK

DATE 7-25-00

WEATHER SUN

TEMP. +75°

ROUTE #100

COUNTY SENECA

TOWNSHIP Eden

SECTION 15, 10, 16, 9

T.L.N.R. 15 E

TYPE MONUMENT <sup>"A"</sup> P.R. + WASHER      <sup>"B"</sup> P.R. SHANK

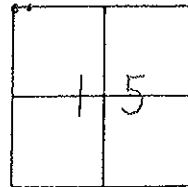
ON SURFACE - ~~BELOW~~ SURFACE SURFACE

LEFT - ~~Q~~ PAV'T. - RIGHT 0.5' LT  $\frac{Q}{2}$       0.9' RT  $\frac{Q}{2}$

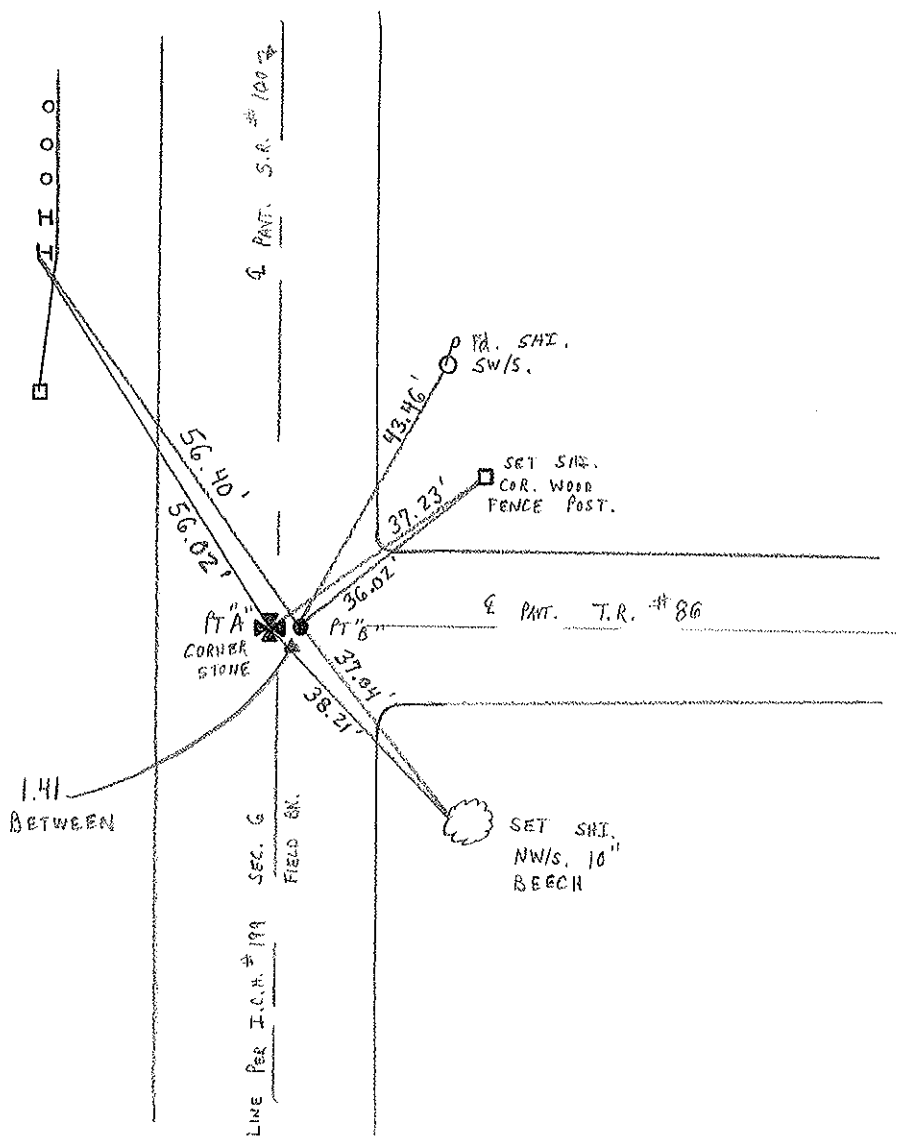
<sup>PIA</sup> 10.1 TO LT. EDGE PAVEMENT      B = 11.5' TO LT. E.O.P.

S.L.M. <sup>PIA</sup> A = 239+59      B = 239+59

RESET P.R. + WASHERS  
10-18-00  
M.R.C.



RECORD: COR. SEC 9, 10, 15 & 16  
 Fd. GREENISH GRANITE STONE (4/25/84)  
 7" x 8" x ?? 15" BELOW SURFACE  
 ALSO Fd. PARTS OF OLD STAKE  
 P.R. + WASHERS.



# O.D.O.T. DISTRICT 2 SURVEY OFFICE

PERSONNEL

NOTES CRONIN  
 H.C. RIPPLE  
 R.C. BARBOUR & MEAS.  
GEYMAN

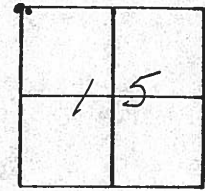
REFERENCE NO. 18  
 DRAWN 12/20/88  
 DATE 11-30-89  
 WEATHER Cloudy Windy  
 TEMP. 35°

SHEET 18 OF       

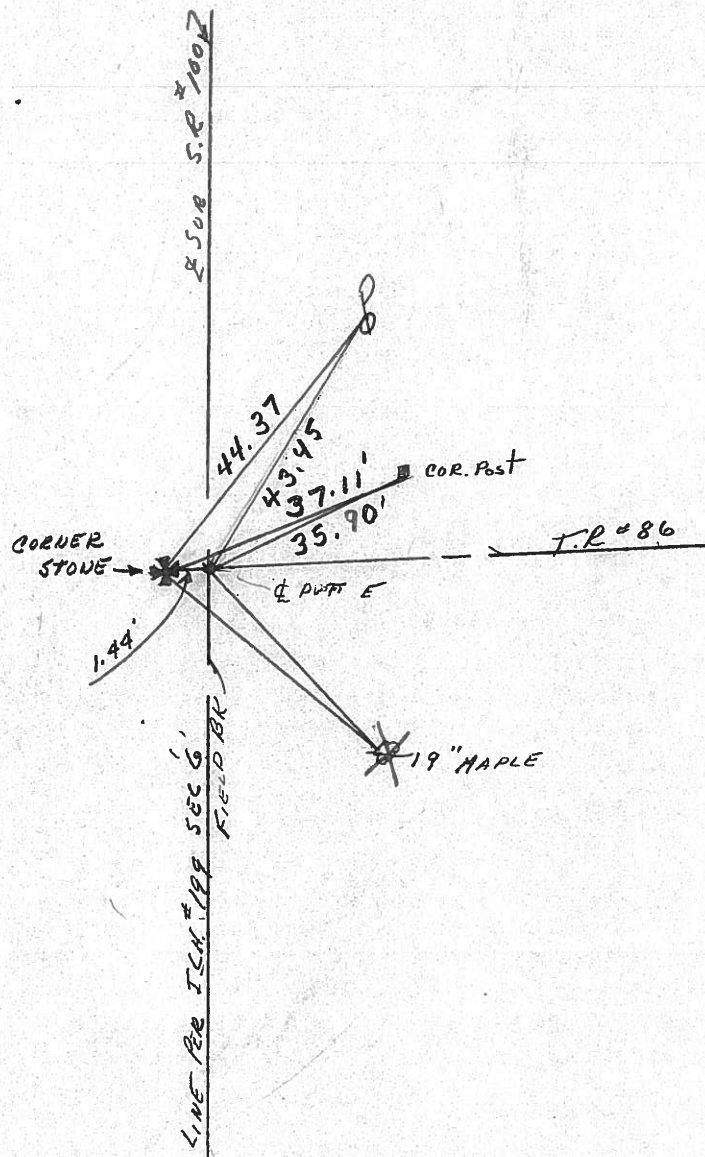
ROUTE #100  
 COUNTY SENECA  
 TOWNSHIP EDEN  
 SECTION 15, 10, 16, 9  
 T. N R. 15 E

TYPE MONUMENT P.K. & Washers  
 ON SURFACE - BELOW SURFACE  
 LEFT - CL PAV'T. - RIGHT STONE 1.44 LT. &  
       TO        EDGE PAVEMENT  
 S.L.M.       

17



COR. SEC. 9, 10, 15 & 16  
FO. GREENISH GRANITE STONE (4/25/84)  
7" x 8" x 15" BELOW SURFACE  
ALSO NO. PARTS OF OLD STAKE  
P.K. & Washers



Q.D.O.T. DISTRICT 2 SURVEY OFFICE

SHEET 1 OF 1

County Seneca S.R. #100

Township Eden

Section 9, 10, 15, 16

T1N, R15E

Personnel Cronin

Geyman

Barbour

Date 4/25/84 - Found  
5/7/84 - Referenced

Weather overcast

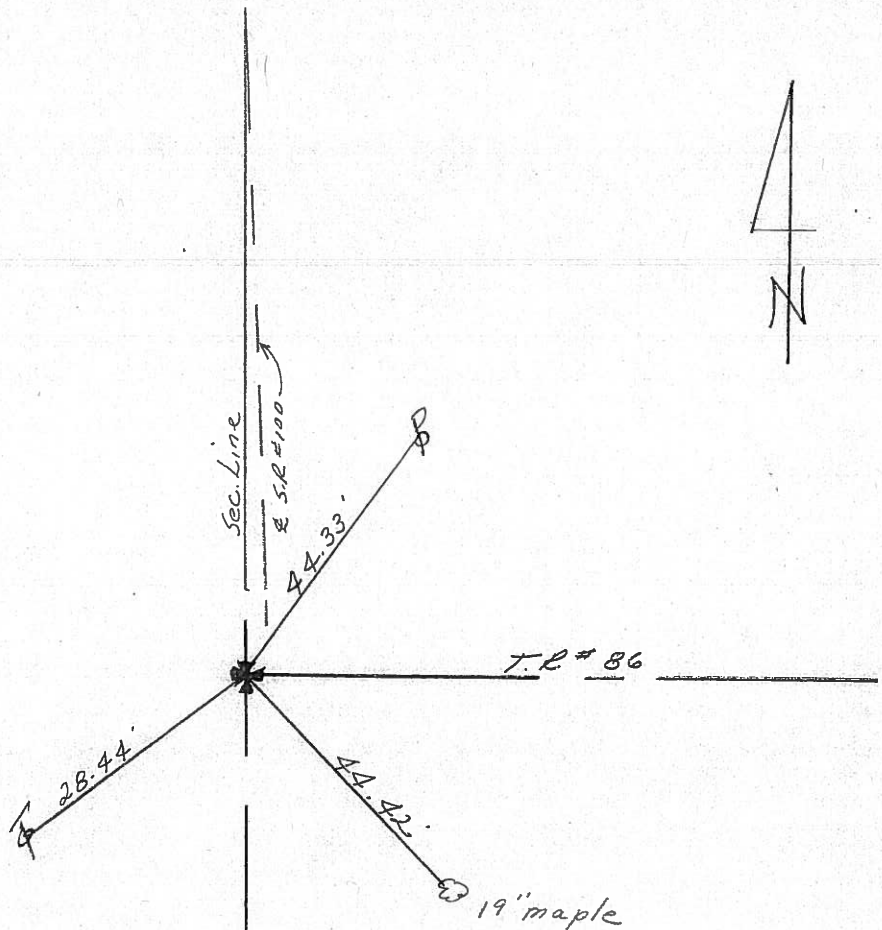
Temp. 45°

(17)

9	10
16	15



Cor. Sec. 9, 10, 15 & 16  
Ed. greenish granite stone.  
7x8" x ?? 15" below surface.  
Also found what was left of  
old stake. set square  
spike & washer atop



\* - Nails & shiners also set in pavement  
for 't' ties



Q.D.O.T. DISTRICT 2 SURVEY OFFICE

SHEET 1 OF 1

County Seneca T. R. #86

Township Eden

Section #10

T1N, R15E

Personnel Cronin

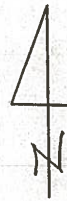
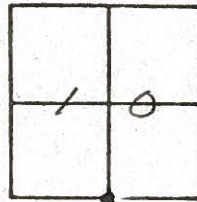
Geyman

Barbour

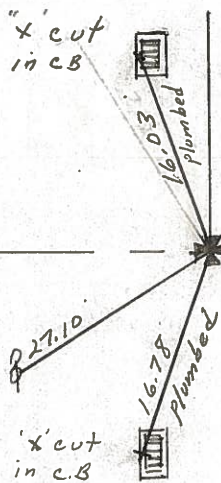
Date 4/25/84 - found  
5/4/84 - Referenced

Weather overcast

Temp. 45°



5/4 Post Sec. #10  
Ed. Reddish orange  
granite stone - 8" x 8" x ??  
31" below surface. I. Pipe  
was on west side of  
stone. Also found what  
was left of old stake



\* nails & shiners also set in pavement for 4 ties  
and also nails & shiners set N.Ely & S.Ely @ 6' off of Iron  
pipe found