

O.D.O.T. DISTRICT 2 SURVEY OFFICE (USE ONLY)

PERSONNEL

REFERENCE NO. 17 A

SHEET 22 OF 46

NOTES RHOADES

DATE 7/12/21

ROUTE SR 100

H.C. AUBLE

WEATHER OVERCAST

COUNTY SENECA

R.C. NIESE

TEMP. 72°

TOWNSHIP EDEN

SECTION 15

DWG BY WHITAKER

PID 95778

T 1 N R 15 E

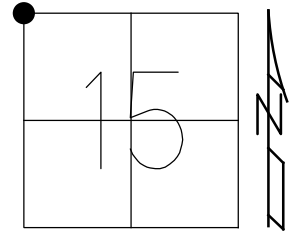
TYPE MONUMENT MAG/WASHER

ON SURFACE - ~~BELOW~~ ON

OFFSET Q PAVEMENT 0.9' ~~LT~~ : RT

11.5' TO LT EDGE PAVEMENT

STATION: 239+59



HORZ. DATUM: NAD83(2011)

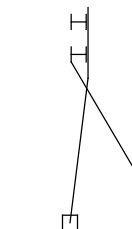
GEOID: 2012A

GRID: NORTHING: 505095.995

EASTING: 1794245.697

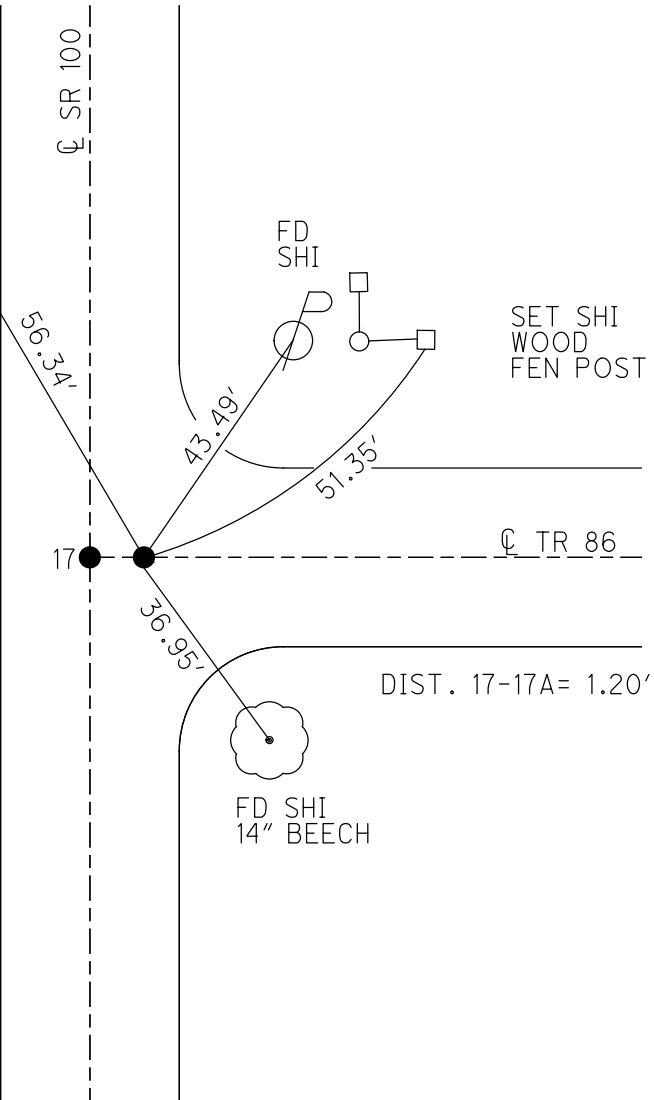
RECORD:
 SET P.K./WASHER
 4/25/84
 FD P.K./WASHER
 7/25/00
 SET P.K./WASHER
 10-18-00, MRC
 FD MAG NAIL
 REF A17
 1-24-19
 8-19-19, JFO
 FD MAG
 REF 17A
 7/12/21, DSA
 SET MAG/WASHER
 NEWREF17A
 11/23/21, DSA

1' UP
GR. POST



Q SR 100

17



SET SHI
WOOD
FEN POST

Q TR 86

DIST. 17-17A= 1.20'

FD SHI
14" BEECH

O.D.O.T. DISTRICT 2 SURVEY OFFICE (USE ONLY)

PERSONNEL _____ REFERENCE NO. 17 A SHEET 22 OF 38
 NOTES CANTERBURY DATE 7-25-00 ROUTE SR 100
 H.C. BARNHISEL WEATHER SUNNY COUNTY SENECA
 R.C. MOSER TEMP. 75° TOWNSHIP EDEN
 DWG BY NIESE PID 107060 SECTION 15
 T 1 N R 15 E

TYPE MONUMENT _____ P.K. SHANK _____

ON SURFACE - ~~BELOW~~ ON _____

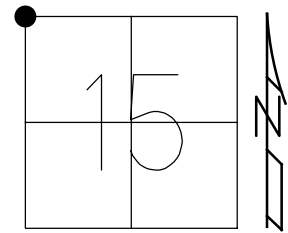
OFFSET \varnothing PAVEMENT 0.9' LT : RT

11.5' TO LT EDGE PAVEMENT

STATION: 239+59

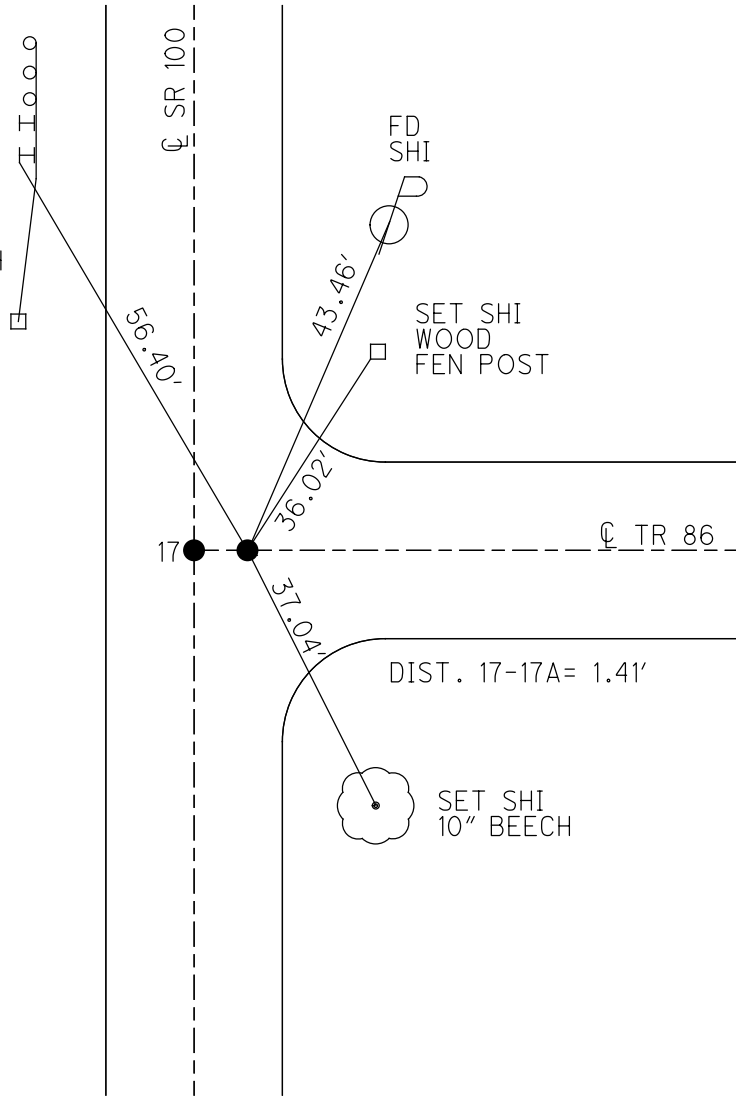
HORZ. DATUM: NAD83(2011) GEOID: 2012A

GRID: NORTHING: 505095.995 EASTING: 1794245.697



RECORD:
 SET P.K./WASHER
 4/25/84
 FD P.K./WASHER
 7/25/00
 SET P.K./WASHER
 10-18-00, MRC
 FD MAG NAIL
 REFA17
 1-24-19
 8-19-19, JFO

CUT NOTCH
 STEEL GR
 POST



O.D.O.T. DISTRICT 2 SURVEY OFFICE

PERSONNEL

REFERENCE NO. 17

SHEET 19 OF 31

NOTES CANTERBURY

H.C. BARNHISEL

R.C. MOSEK

DATE 7-25-00

WEATHER SUN

TEMP. +75°

ROUTE #100

COUNTY SENECA

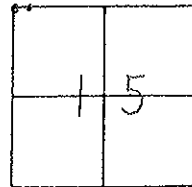
TOWNSHIP Eden

SECTION 15, 10, 16, 9

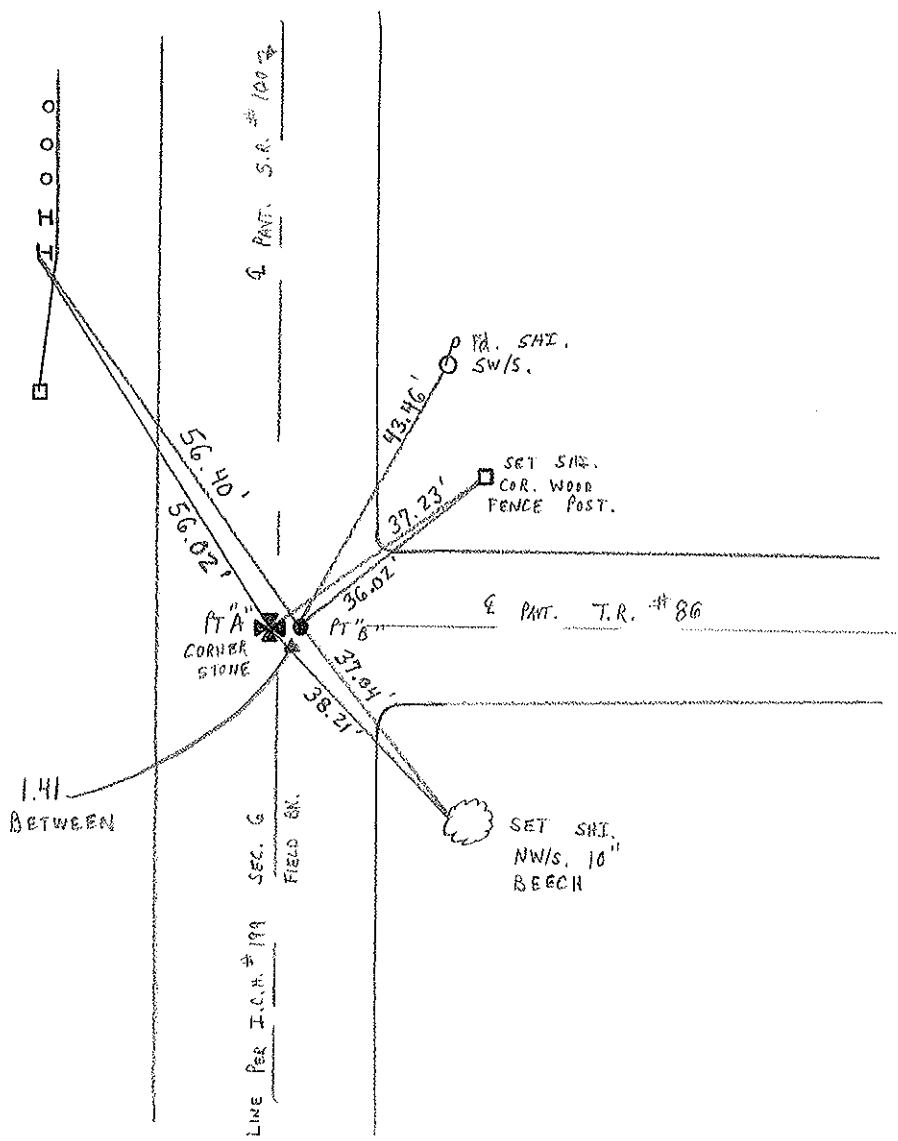
T.L.N.R. 15 E

TYPE MONUMENT "A" P.R. + WASHER "B" P.R. SHANK
 ON SURFACE - BELOW SURFACE SURFACE
 LEFT - PAV'T. - RIGHT 0.5' LT 0.9' RT
 10.1 TO LT. EDGE PAVEMENT B = 11.5' TO LT. E.O.P.
 S.L.M. PT A = 239+59 PT B = 239+59

RESET P.R. + WASHERS
 10-18-00
 M.R.C.



RECORD: COR. SEC 9, 10, 15 & 16
 Fd. GREENISH GRANITE STONE (4/25/84)
 7" x 8" x ?? 15" BELOW SURFACE
 ALSO Fd. PARTS OF OLD STAKE
 P.R. + WASHERS.



O.D.O.T. DISTRICT 2 SURVEY OFFICE

PERSONNEL

NOTES

H.C.

R.G.

CRONIN
RIFFLE
SARBOUR } MEAS.
GEYMAN }

REFERENCE NO. 18

DRAWN 12/20/88

DATE 11-30-89

WEATHER Cloudy Windy

TEMP. 35°

SHEET 18 OF

ROUTE #100

COUNTY SENECA

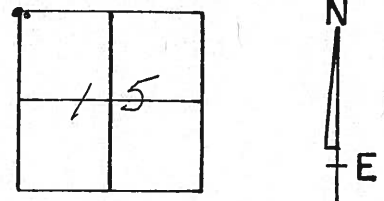
TOWNSHIP EDEN

SECTION 15, 10, 16, 9

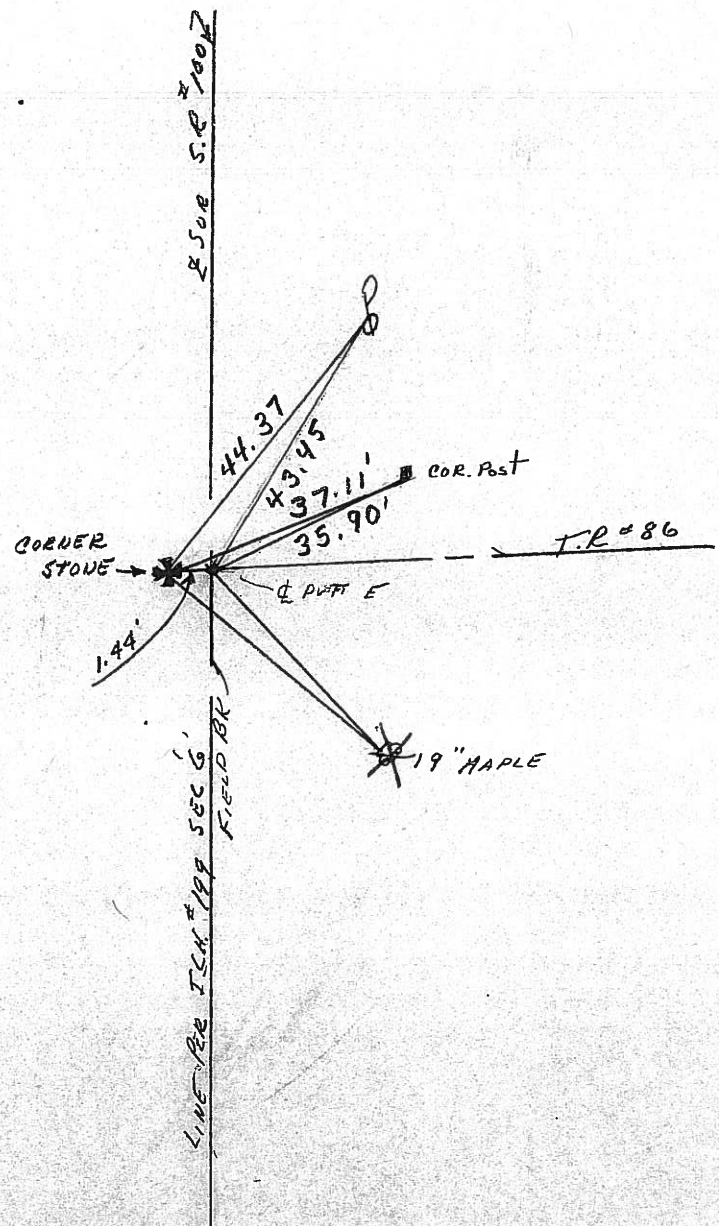
T. 1 N. R. 15 E.

TYPE MONUMENT P.K. & WASHERS
 ON SURFACE - BELOW SURFACE
 LEFT- & PAV'T. - RIGHT STONE 1.44 LT. &
 TO EDGE PAVEMENT
 S.L.M.

(17-A)



COR. SEC. 9, 10, 15 & 16
FO. GREENISH GRANITE STONE (4/25/84)
7" x 8" x 15" BELOW SURFACE
ALSO FO. PARTS OF OLD STAKE
P.K. & WASHERS



LINE BR ILM #109 SEC 6 FIELD BR