

O.D.O.T. DISTRICT 2 SURVEY OFFICE (USE ONLY)

PERSONNEL

REFERENCE NO. 18 A

SHEET 24 OF 46

NOTES RHOADES

DATE 7/12/21

ROUTE SR 100

H.C. AUBLE

WEATHER OVERCAST

COUNTY SENECA

R.C. NIESE

TEMP. 72°

TOWNSHIP EDEN

SECTION 9

DWG BY WHITAKER PID 95778

T 1 N R 15 E

TYPE MONUMENT 1 1/4" O.D. I PIN

ON SURFACE - ~~BELOW~~ ON

OFFSET Q PAVEMENT 20' LT : ~~RT~~

8.9' TO LT EDGE PAVEMENT

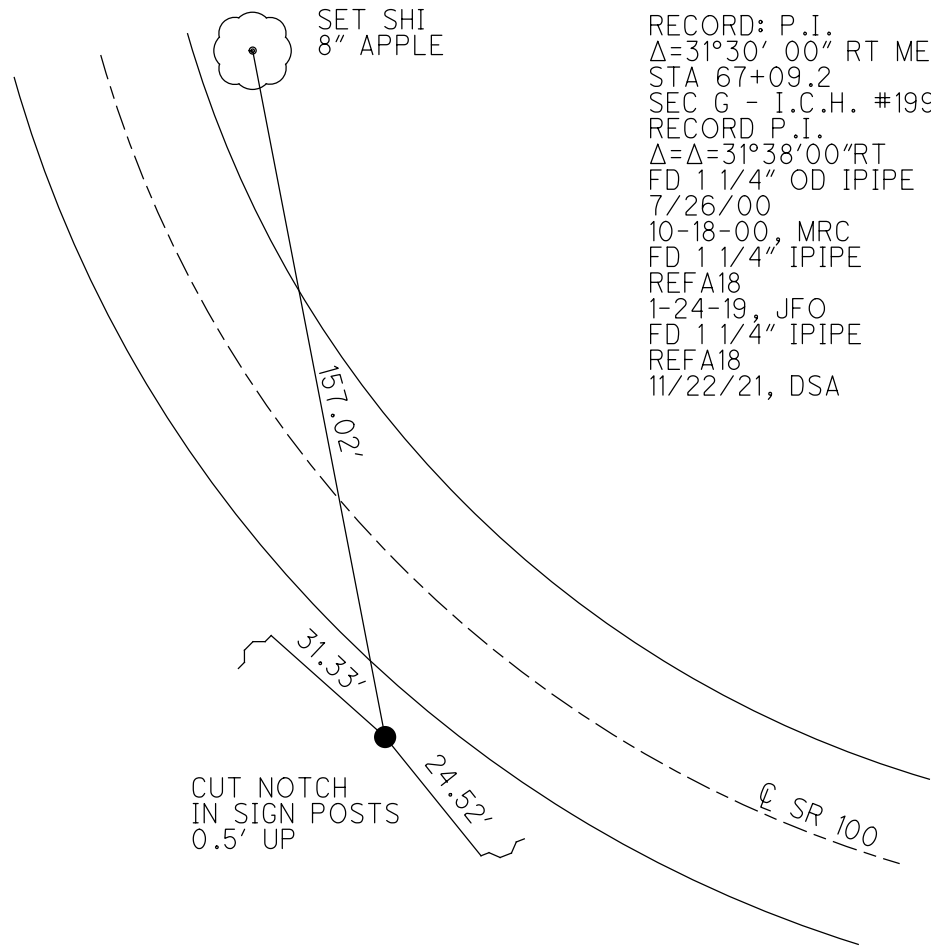
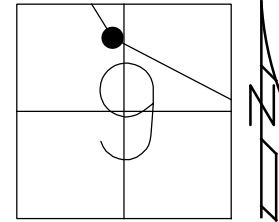
STATION: 289+17

HORZ. DATUM: NAD83(2011)

GEOID: 2012A

GRID: NORTHING: 509064.149

EASTING: 1791799.565

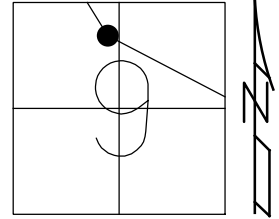


RECORD: P.I.
 $\Delta=31^{\circ}30'00''$ RT MEAS.
 STA 67+09.2
 SEC G - I.C.H. #199
 RECORD P.I.
 $\Delta=31^{\circ}38'00''$ RT
 FD 1 1/4" OD IPIPE
 7/26/00
 10-18-00, MRC
 FD 1 1/4" IPIPE
 REFA18
 1-24-19, JFO
 FD 1 1/4" IPIPE
 REFA18
 11/22/21, DSA

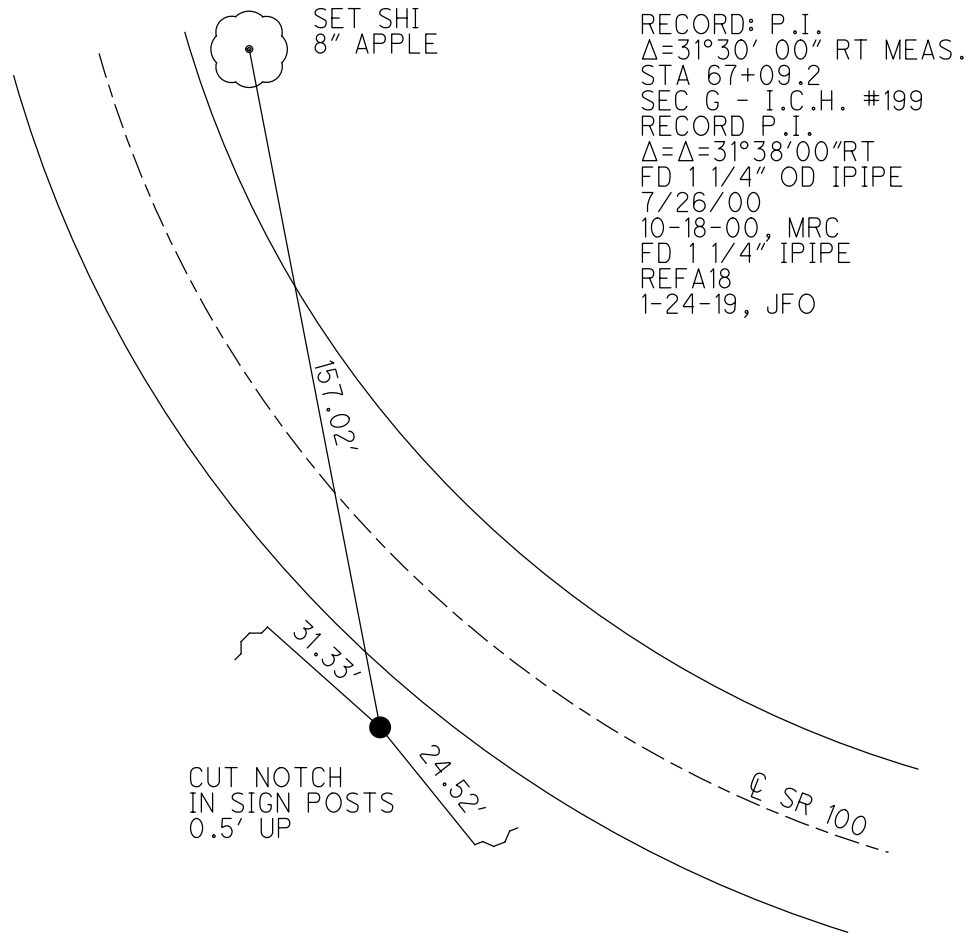
O.D.O.T. DISTRICT 2 SURVEY OFFICE (USE ONLY)

PERSONNEL _____ REFERENCE NO. 18 A SHEET 24 OF 38
 NOTES CANTERBURY DATE 7-26-00 ROUTE SR 100
 H.C. BARNHEISEL WEATHER CLOUDY COUNTY SENECA
 R.C. MOSER TEMP. 80° TOWNSHIP EDEN
 DWG BY NIESE PID 107060 SECTION 9
 T 1 N R 15 E

TYPE MONUMENT 1-1/4" O.D. I PIN
 ON SURFACE - ~~BELOW~~ ON
 OFFSET $\text{\textcircled{C}}$ PAVEMENT 20' LT : ~~RT~~
8.9' TO LT EDGE PAVEMENT
 STATION: 292+43



HORZ.DATUM: NAD83(2011) GEOID: 2012A
 GRID: NORTHING: 509064.149 EASTING: 1791799.565



O.D.O.T. DISTRICT 2 SURVEY OFFICE

PERSONNEL _____ REFERENCE NO. 18 SHEET 21 OF 31

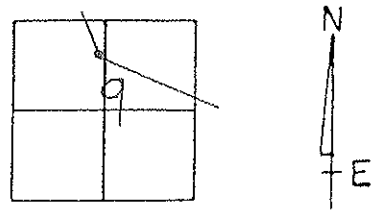
NOTES CANTERBURY
 H.C. MOSEK
 R.C. CANTERBURY

DATE 7-26-00
 WEATHER OVERCAST
 TEMP. +80°

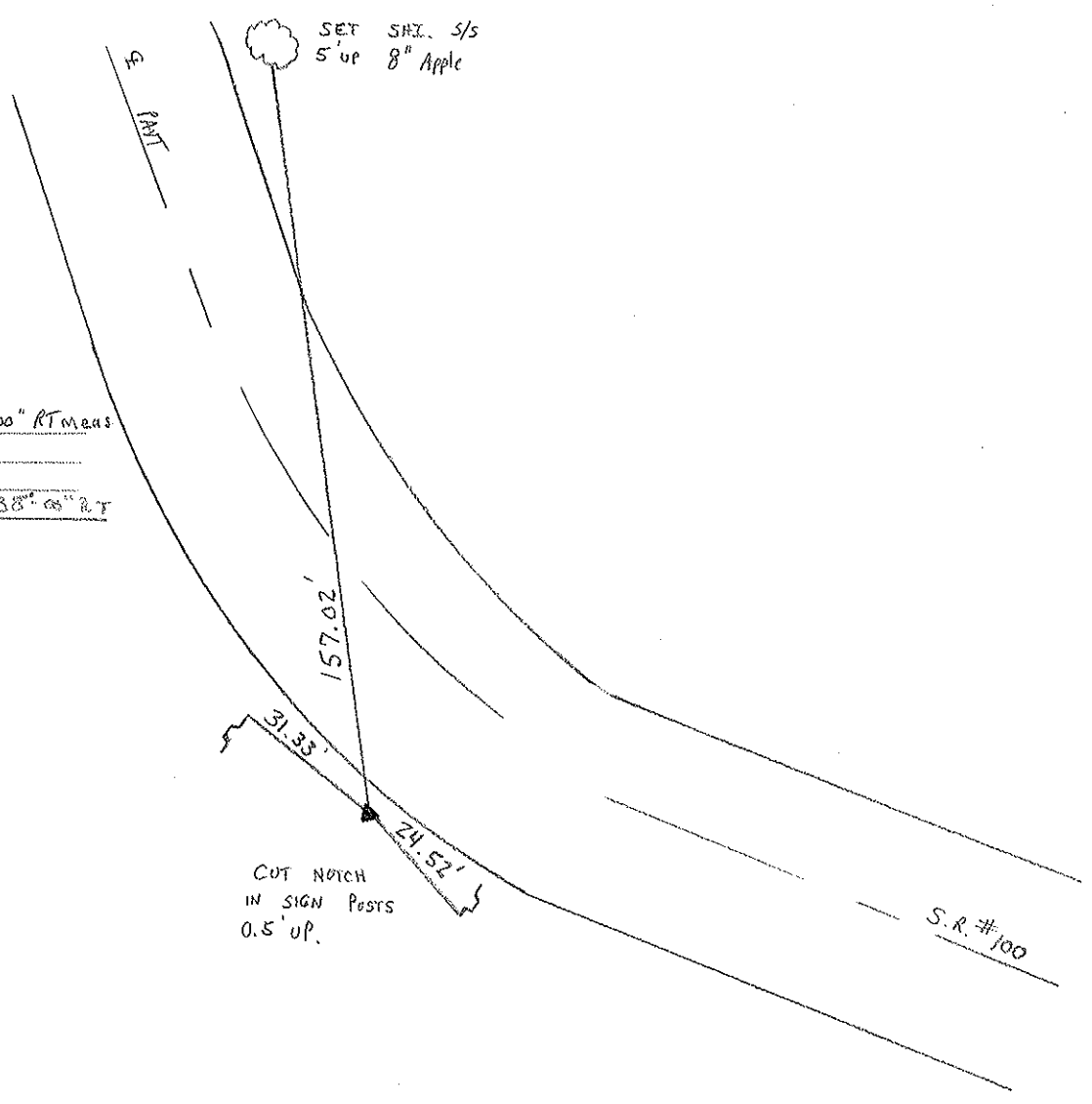
ROUTE #100
 COUNTY SENECA
 TOWNSHIP EDEN
 SECTION 9
T 1 N R 15 E

TYPE MONUMENT 1/4 O.D. I. PIPE
 ON SURFACE - BELOW SURFACE
 LEFT - Q PAV'T. - RIGHT 20' LT Q PAVT
8.9' TO LT EDGE PAVEMENT
 S.L.M. 289 + 17

POINT NOT COVERED
10-18-00
M.R.C.



RECORD: P.I. $\Delta = 31^\circ - 30' - 00''$ RT Meas
 STA 67+09.2
 SEC. G - I.C. H. # 199
 Record P.I. = $\Delta - 31^\circ - 38' - 00''$ RT



O.D.O.T. DISTRICT 2 SURVEY OFFICE

PERSONNEL

REFERENCE NO. 20

SHEET 20 OF

NOTES CRONIN

DRAWN 1-11-190

H.C. RIPPLE

DATE 4/5/88

R.C. BARBOUR

WEATHER SUNNY

GEYMAN

TEMP. 78°

ROUTE #100

COUNTY SENECA

TOWNSHIP EDEN

SECTION 9

T 1 N R 15 E

TYPE MONUMENT 1 1/4" O.D. I.P.P.E

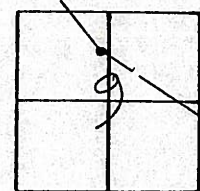
ON SURFACE - BELOW

LEFT - PAV'T. - RIGHT OFF PAVEMENT

TO EDGE PAVEMENT

S.L.M.

(18-A)



R.S.E. #100

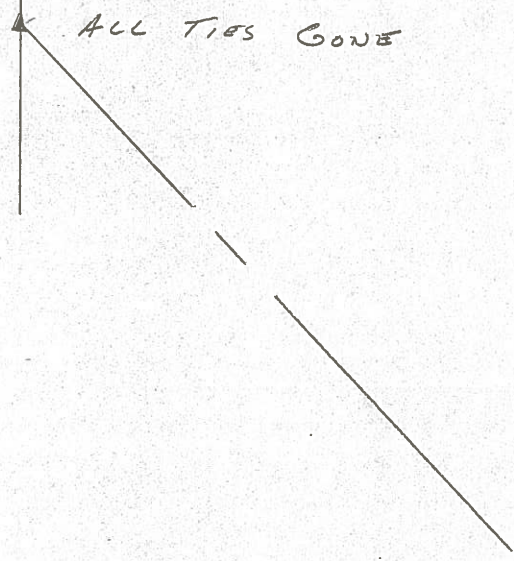
P.F.

A = 31° 30' 00" Rt. Mens.

A = 31° 38' 00" Rt. Rec.

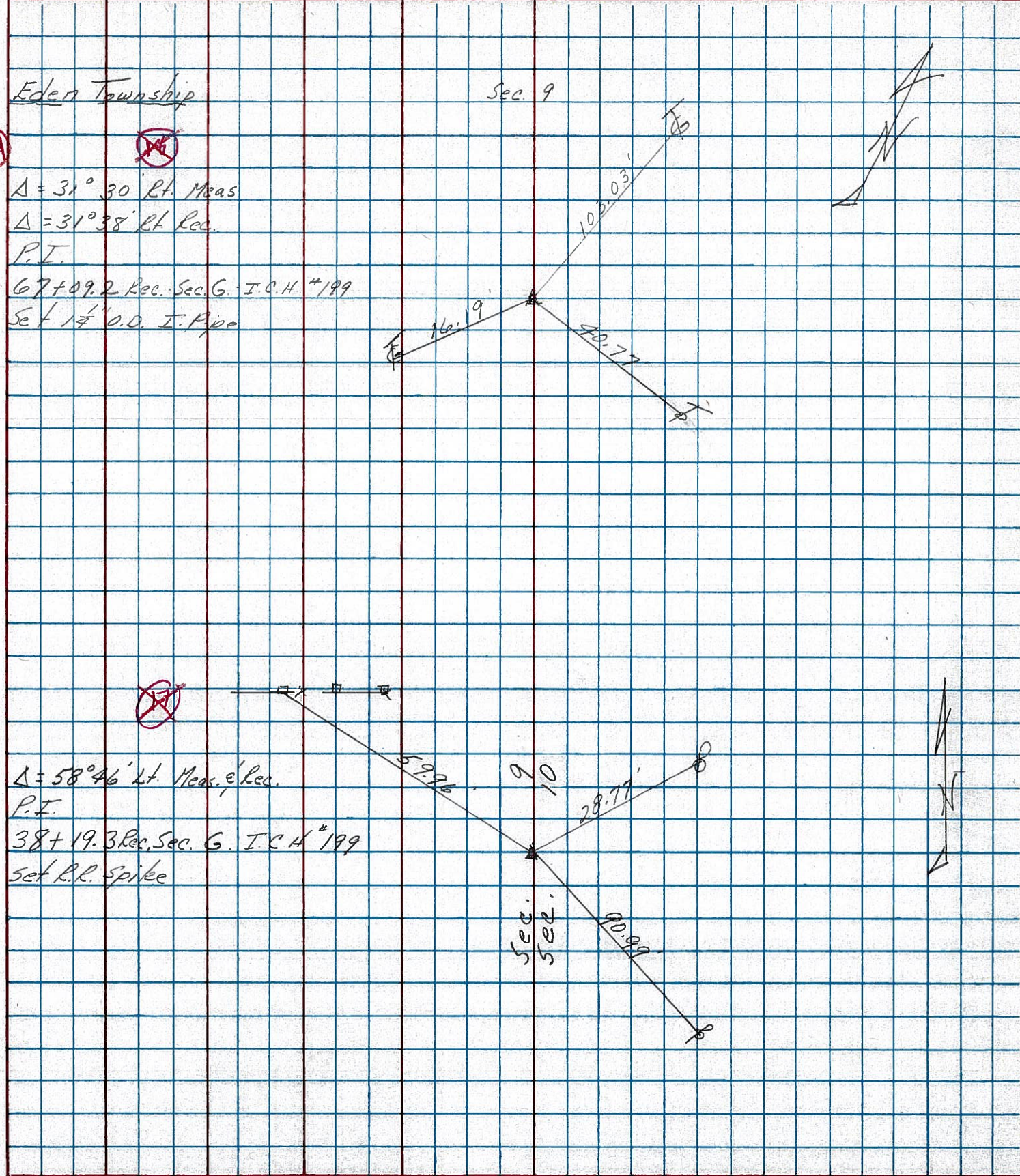
67+09.2 - SEC. 9 - I.C.H. #199

ALL TIES GONE



PERSONNEL	TITLE	PERSONNEL	TITLE	COUNTY	DATE
CRONIN		SCHNEIDER		SENECA	3/20/78
RIPPLE		MOSSER		S. R. #100	WEATHER sunny-windy
		BARBOUR		SEC. MELMORE - NORTH	TEMP. 45°

DESCRIPTION TIES FOR CONTROL POINTS JOB NO.



18-A

18