

O.D.O.T. DISTRICT 2 SURVEY OFFICE (USE ONLY)

PERSONNEL

REFERENCE NO. 19

SHEET 25 OF 46

NOTES RHOADES

DATE 7/12/21

ROUTE SR 100

H.C. AUBLE

WEATHER CLOUDY

COUNTY SENECA

R.C. NIESE

TEMP. 72°

TOWNSHIP EDEN

SECTION 9

DWG BY WHITAKER PID 107060

T 1 N R 15 E

TYPE MONUMENT MAG/WASHER

ON SURFACE - ~~BELOW~~ ON

OFFSET 1' LT : ~~RT~~

-- TO -- EDGE PAVEMENT 3' S. CR 16E

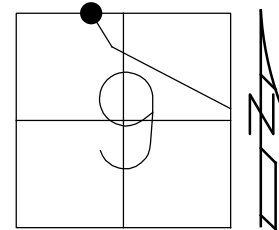
STATION: 306+68

HORZ. DATUM: NAD83(2011)

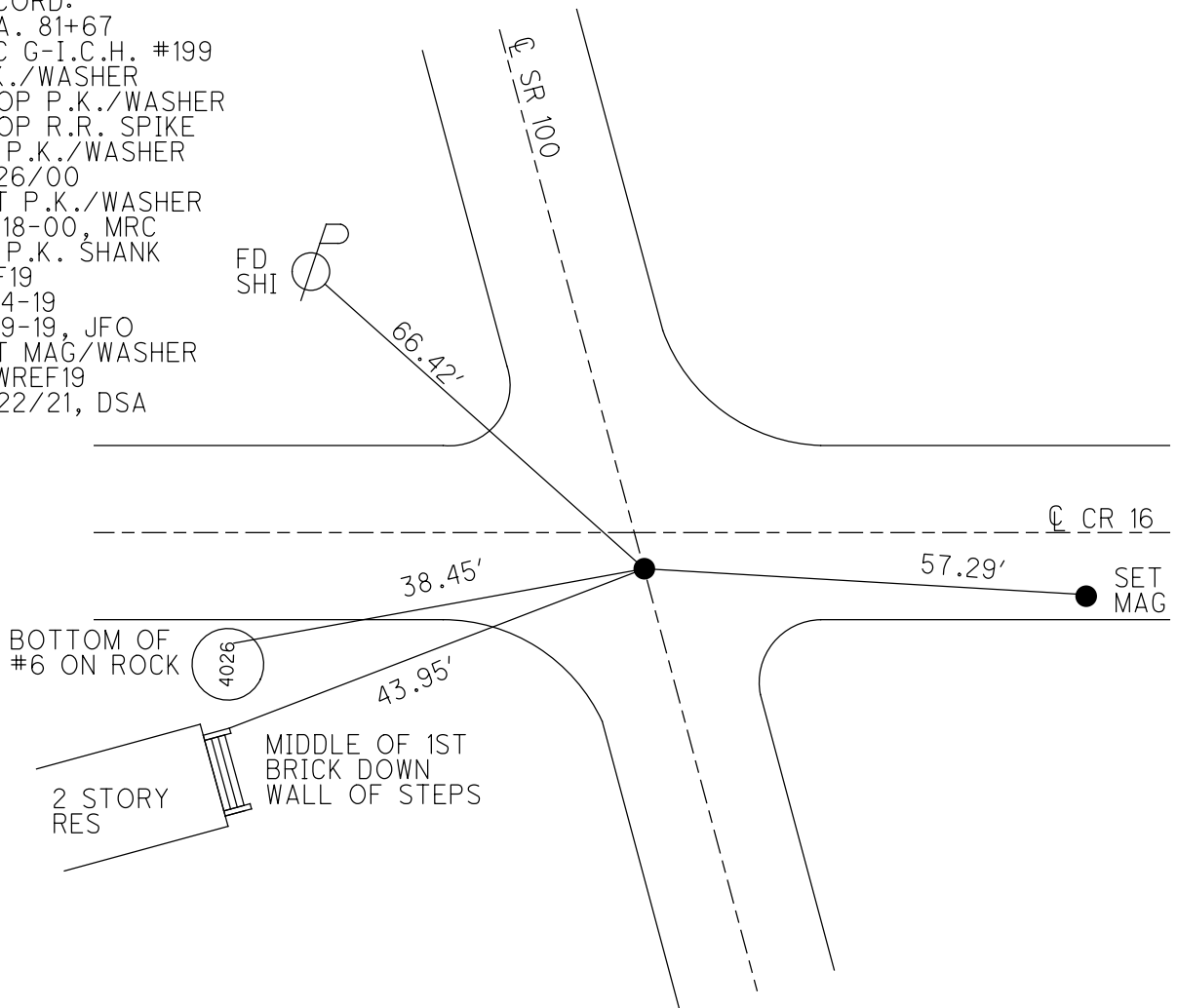
GEOID: 2012A

GRID: NORTHING: 510350.132

EASTING: 1791157.531



RECORD:
 STA. 81+67
 SEC G-I.C.H. #199
 P.K./WASHER
 ATOP P.K./WASHER
 ATOP R.R. SPIKE
 FD P.K./WASHER
 7/26/00
 SET P.K./WASHER
 10-18-00, MRC
 FD P.K. SHANK
 REF19
 1-24-19
 8-19-19, JFO
 SET MAG/WASHER
 NEWREF19
 11/22/21, DSA



O.D.O.T. DISTRICT 2 SURVEY OFFICE (USE ONLY)

PERSONNEL _____ REFERENCE NO. 19 SHEET 25 OF 38

NOTES CANTERBURY DATE 7-26-00 ROUTE SR 100
 H.C. MOSER WEATHER CLOUDY COUNTY SENECA
 R.C. CANTERBURY TEMP. 80° TOWNSHIP EDEN

DWG BY NIESE PID 107060 SECTION 9
 T 1 N R 15 E

TYPE MONUMENT P.K./WASHER

ON SURFACE - ~~BELOW~~ ON _____

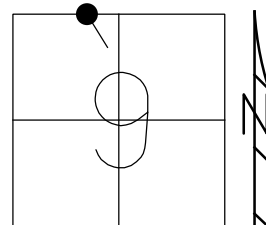
OFFSET 0 PAVEMENT 1' LT : ~~RT~~

-- TO -- EDGE PAVEMENT 3' S. CR 16E

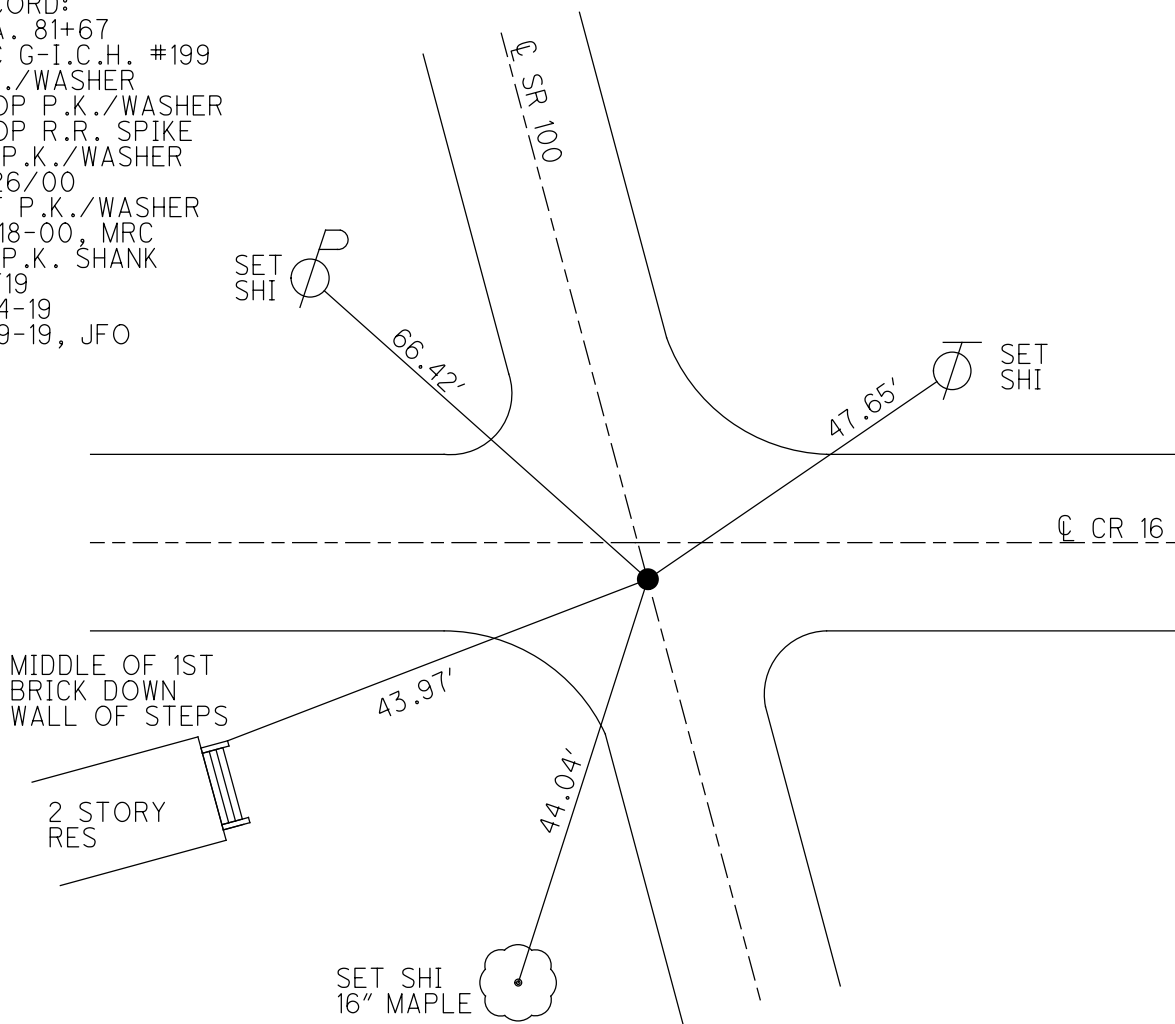
STATION: 306+68

HORIZ.DATUM: NAD83(2011) GEOID: 2012A

GRID: NORTHING: 510350.132 EASTING: 1791157.531



RECORD:
 STA. 81+67
 SEC G-I.C.H. #199
 P.K./WASHER
 ATOP P.K./WASHER
 ATOP R.R. SPIKE
 FD P.K./WASHER
 7/26/00
 SET P.K./WASHER
 10-18-00, MRC
 FD P.K. SHANK
 REF19
 1-24-19
 8-19-19, JFO



O.D.O.T. DISTRICT 2 SURVEY OFFICE

PERSONNEL _____

REFERENCE NO. 19

SHEET 22 OF 31

NOTES CANTERBURY

H.C. MOSEY

R.C. CANTERBURY

DATE 7-26-00

WEATHER OVERCAST

TEMP. +80°

ROUTE # 100

COUNTY SENECA

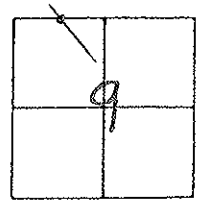
TOWNSHIP EDEN

SECTION 9

T. 1 N. R 15 E

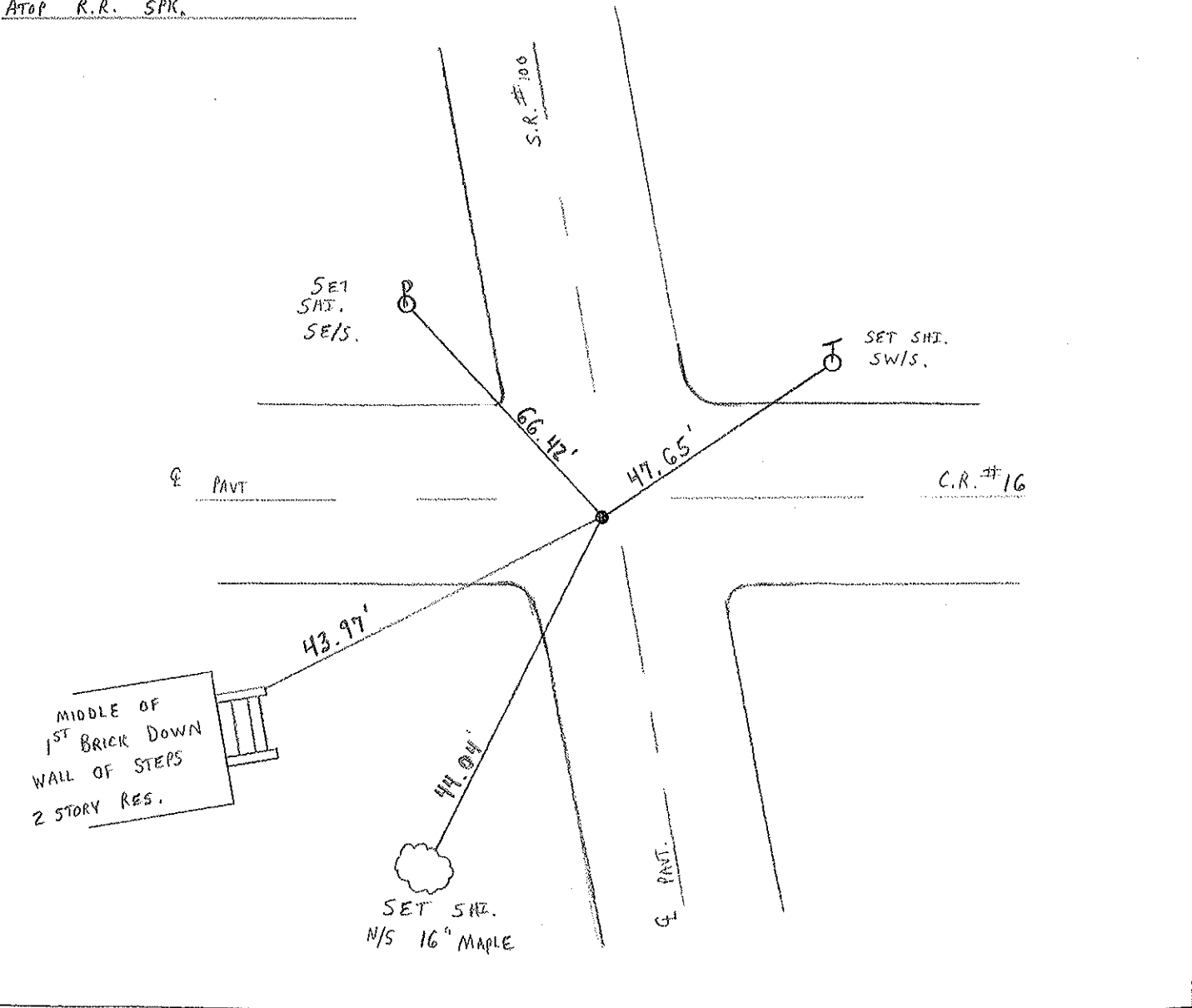
TYPE MONUMENT P.R. + WASHER
 ON SURFACE - ~~BELOW~~ SURFACE
 LEFT - ~~Q~~ PAV'T. - RIGHT 1' LT & PAVT.
TO EDGE PAVEMENT 3'S. C.R. #16E
 S.L.M. 306+68

RESET P.R. & WASHER
 10-18-00
 M.R.C.



RECORD: B1+67 REC. - SEC. G - I.C.H. #199

P.R. & WASHER ATOP SAME
ATOP R.R. SPK.



O.D.O.T. DISTRICT 2 SURVEY OFFICE

PERSONNEL

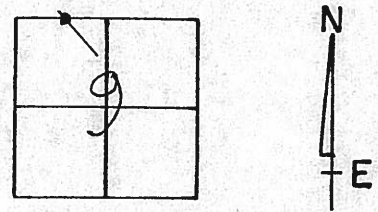
NOTES Crown
 H.C. RIPPLE
 R.C. BARBOUR MEAS
GEYMAN

REFERENCE NO. 79
1/11/90
 DATE 12-1-89
 WEATHER SUNNY
 TEMP. 37°

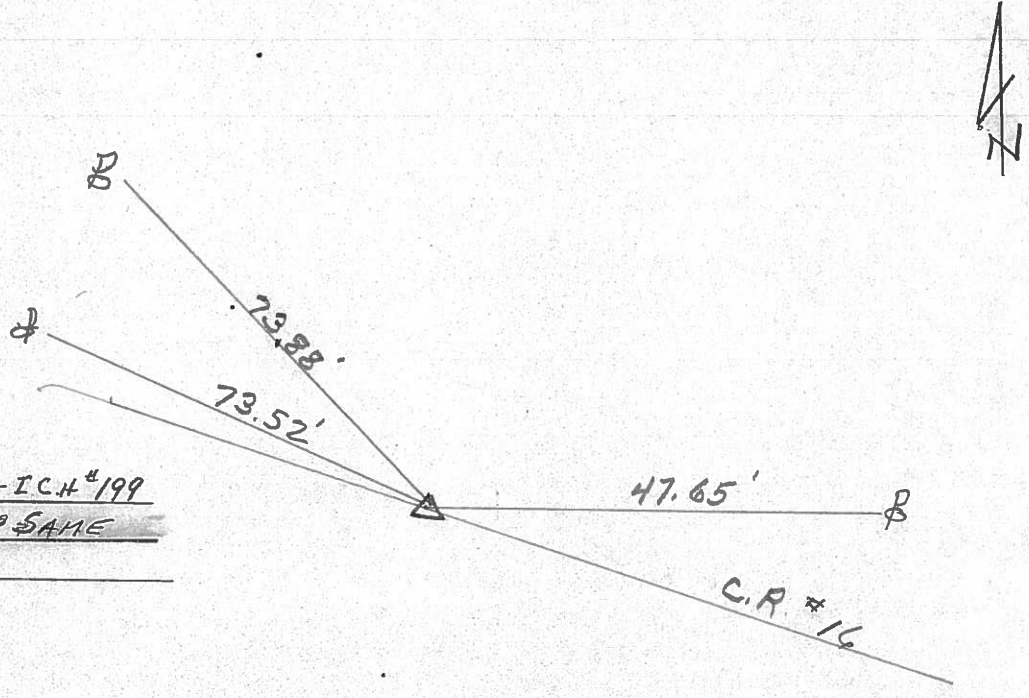
SHEET 21 OF

ROUTE 100
 COUNTY Sen.
 TOWNSHIP EDEN
 SECTION 9
TURN 15 E

TYPE MONUMENT P.K. & Washer
 ON SURFACE - BELOW Surface
 LEFT- & PAV'T. - RIGHT ±
 TO EDGE PAVEMENT
 S.L.M.



81+67 REC.-SEC. 6-ICH #199
P.K. & WASHER ATOP SAME
ATOP R.R. SPIKE



PERSONNEL	TITLE	PERSONNEL	TITLE
CRONIN		SCHNEIDER	
RIPPLE		MOSSER	
		BARBOUR	

COUNTY SENECA DATE 3/20/78
 S. R. #100 WEATHER sunny-windy
 SEC. MELMORE-NORTH TEMP. 45°

DESCRIPTION TIES FOR CONTROL POINTS JOB NO. _____

