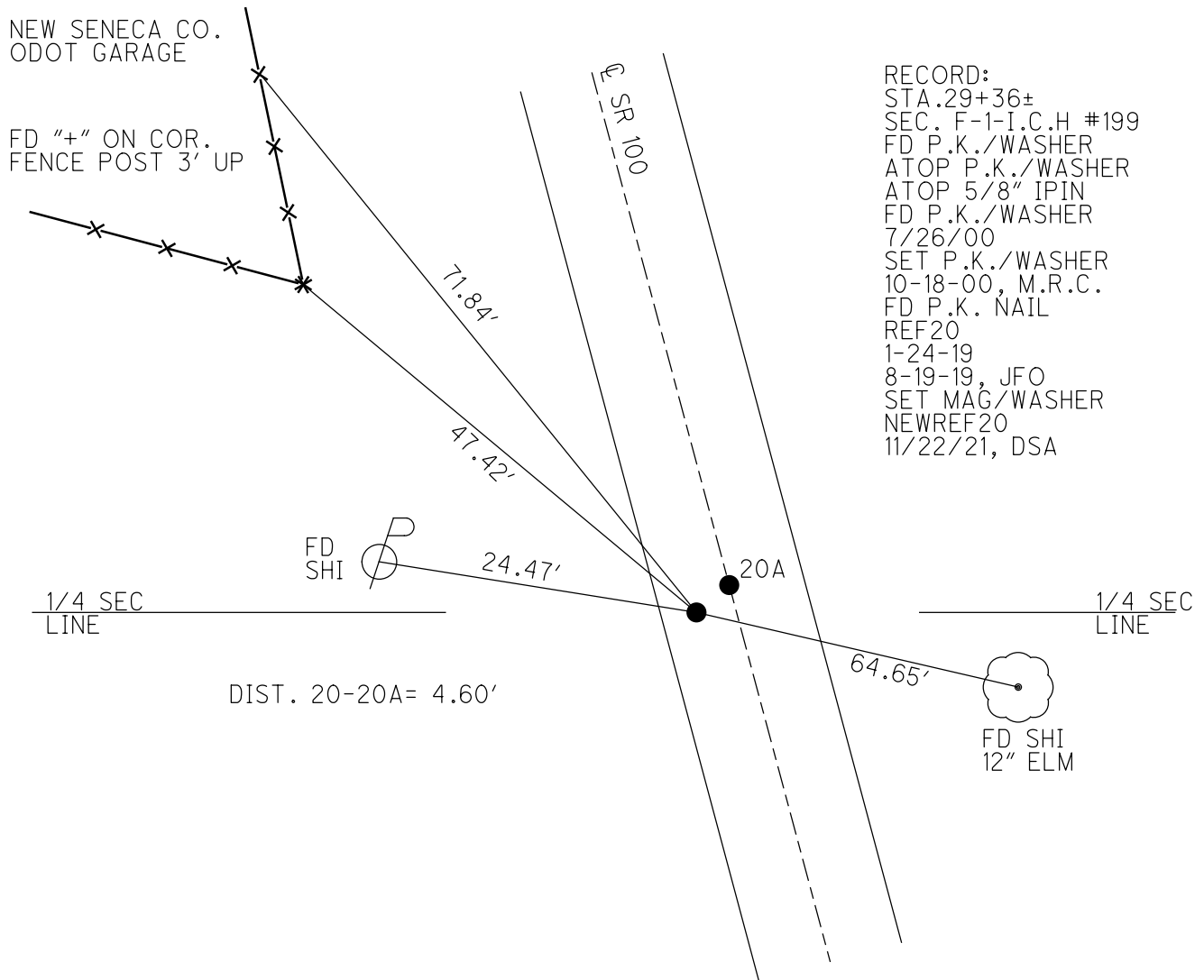
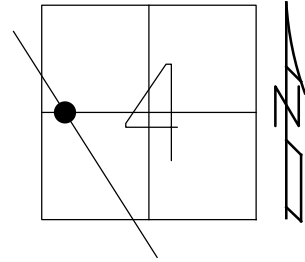


O.D.O.T. DISTRICT 2 SURVEY OFFICE (USE ONLY)

PERSONNEL _____ REFERENCE NO. 20 SHEET 26 OF 46
 NOTES RHOADES DATE 7/12/21 ROUTE SR 100
 H.C. AUBLE WEATHER CLOUDY COUNTY SENECA
 R.C. NIESE TEMP. 72° TOWNSHIP EDEN
 DWG BY WHITAKER PID 95778 SECTION 4
 T 1 N R 15 E

TYPE MONUMENT MAG/WASHER
 ON SURFACE - ~~BELOW~~ ON _____
 OFFSET ☉ PAVEMENT 4.5' LT : ~~RT~~
5.8' TO LT EDGE PAVEMENT
 STATION: 336+77

HORIZ.DATUM: NAD83(2011) GEOID: 2012A
 GRID: NORTHING: 512987.364 EASTING: 1789831.831



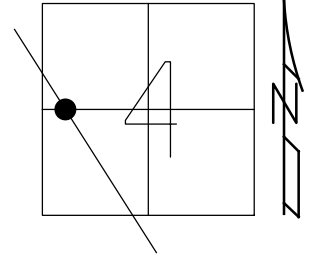
RECORD:
 STA. 29+36±
 SEC. F-1-I.C.H #199
 FD P.K./WASHER
 ATOP P.K./WASHER
 ATOP 5/8" IPIN
 FD P.K./WASHER
 7/26/00
 SET P.K./WASHER
 10-18-00, M.R.C.
 FD P.K. NAIL
 REF20
 1-24-19
 8-19-19, JFO
 SET MAG/WASHER
 NEWREF20
 11/22/21, DSA

O.D.O.T. DISTRICT 2 SURVEY OFFICE (USE ONLY)

PERSONNEL _____ REFERENCE NO. 20 SHEET 26 OF 38
 NOTES CANTERBURY DATE 7-26-00 ROUTE SR 100
 H.C. MOSER WEATHER CLOUDY COUNTY SENECA
 R.C. CANTERBURY TEMP. 80° TOWNSHIP EDEN
 DWG BY NIESE PID 107060 SECTION 4
 T 1 N R 15 E

TYPE MONUMENT P.K./WASHER
 ON SURFACE - ~~BELOW~~ ON _____
 OFFSET \varnothing PAVEMENT 4.5' LT : ~~RT~~
5.8' TO LT EDGE PAVEMENT
 STATION: 336+77

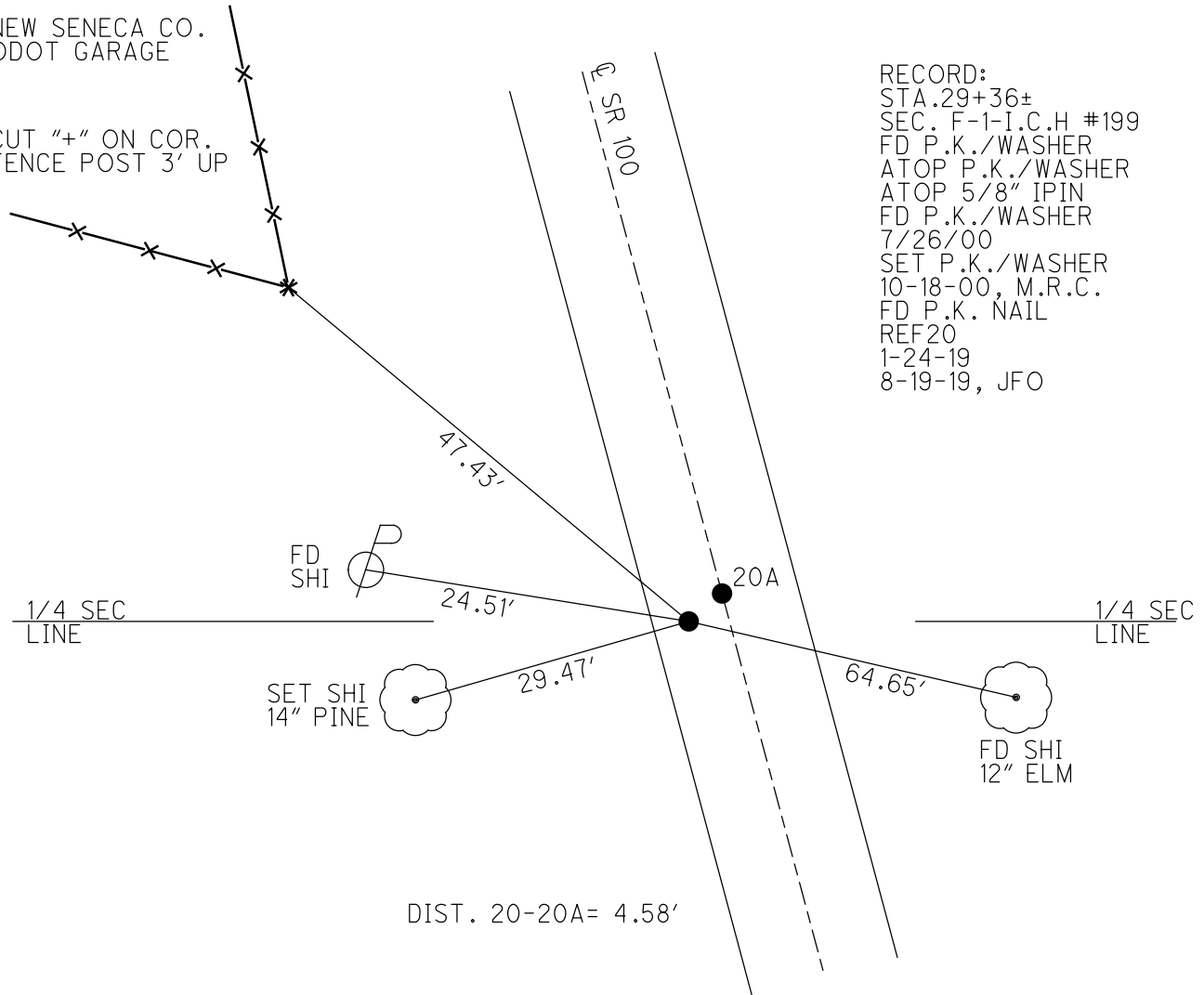
HORZ.DATUM: NAD83(2011) GEOID: 2012A
 GRID: NORTHING: 512987.364 EASTING: 1789831.831



NEW SENECA CO.
 ODOT GARAGE

CUT "+" ON COR.
 FENCE POST 3' UP

RECORD:
 STA.29+36±
 SEC. F-1-I.C.H #199
 FD P.K./WASHER
 ATOP P.K./WASHER
 ATOP 5/8" IPIN
 FD P.K./WASHER
 7/26/00
 SET P.K./WASHER
 10-18-00, M.R.C.
 FD P.K. NAIL
 REF20
 1-24-19
 8-19-19, JFO



DIST. 20-20A= 4.58'

O.D.O.T. DISTRICT 2 SURVEY OFFICE

PERSONNEL

REFERENCE NO. 20

SHEET 23 OF 31

NOTES CANTERBURY

H.C. MOSEK

R.C. CANTERBURY

DATE 7-26-00

WEATHER OVERCAST

TEMP. +80°

ROUTE #100

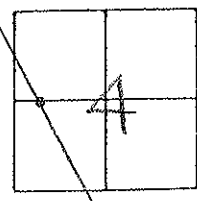
COUNTY SENECA

TOWNSHIP EDEN

SECTION 4

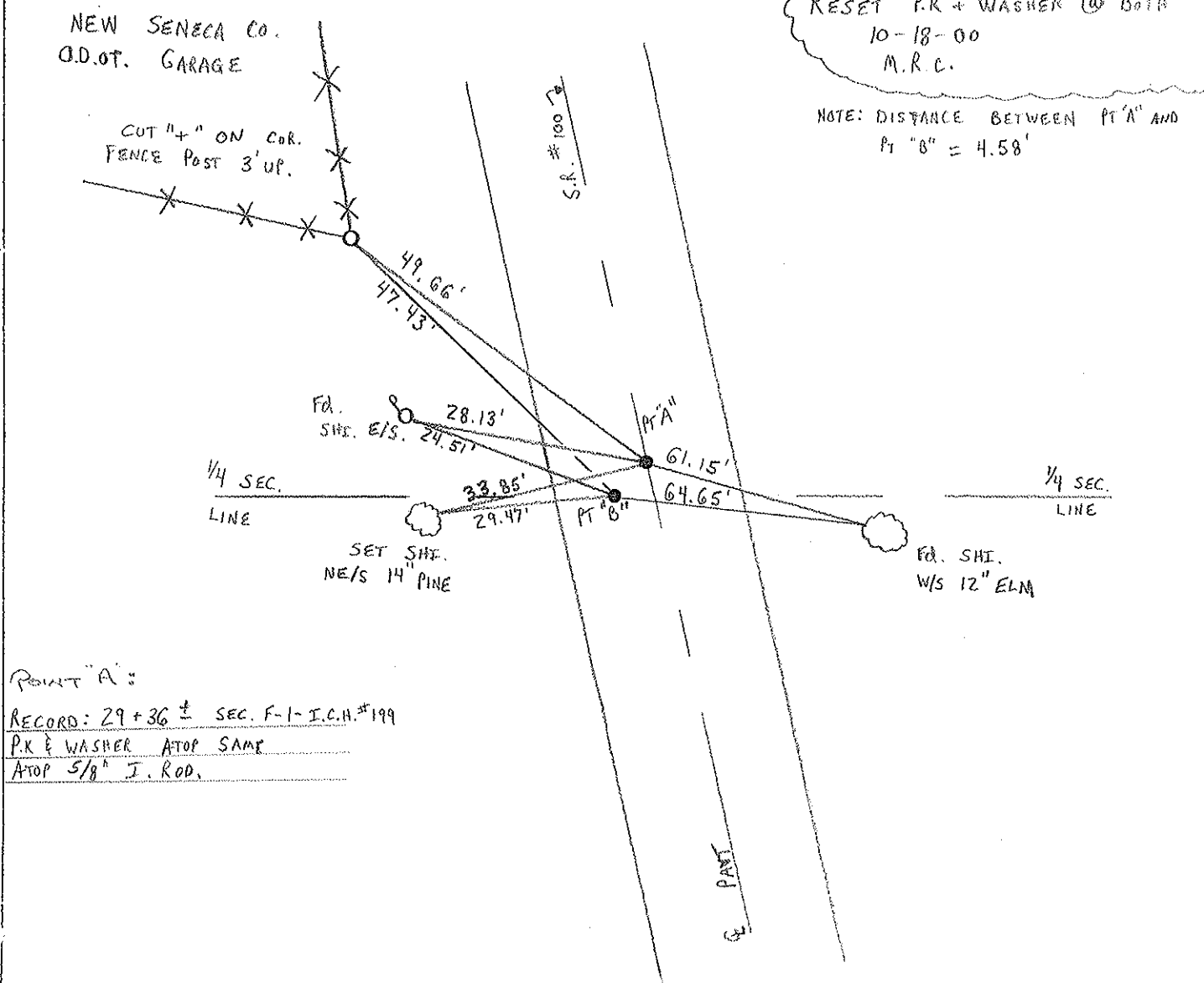
T. 1 N. R. 15 E.

	PT "A"	PT "B"
TYPE MONUMENT	P.K. & WASHER	P.K. & WASHER
ON SURFACE - BELOW	SURFACE	SURFACE
LEFT - & PAW'T. - RIGHT	ON &	4.5 LT &
A = 10.5 TO RT. EDGE PAVEMENT		B = 5.8' TO LT. E.O.P.
S.L.M. A = 336 + 78		B = 336 + 77



RESET P.K. + WASHER @ BOTH
10-18-00
M.R.C.

NOTE: DISTANCE BETWEEN PT "A" AND
PT "B" = 4.58'



POINT "A":
RECORD: 29 + 36 ± SEC. F-1- I.C.H. #199
P.K. & WASHER ATOP SAME
ATOP 5/8" J. ROD.

O.D.O.T. DISTRICT 2 SURVEY OFFICE

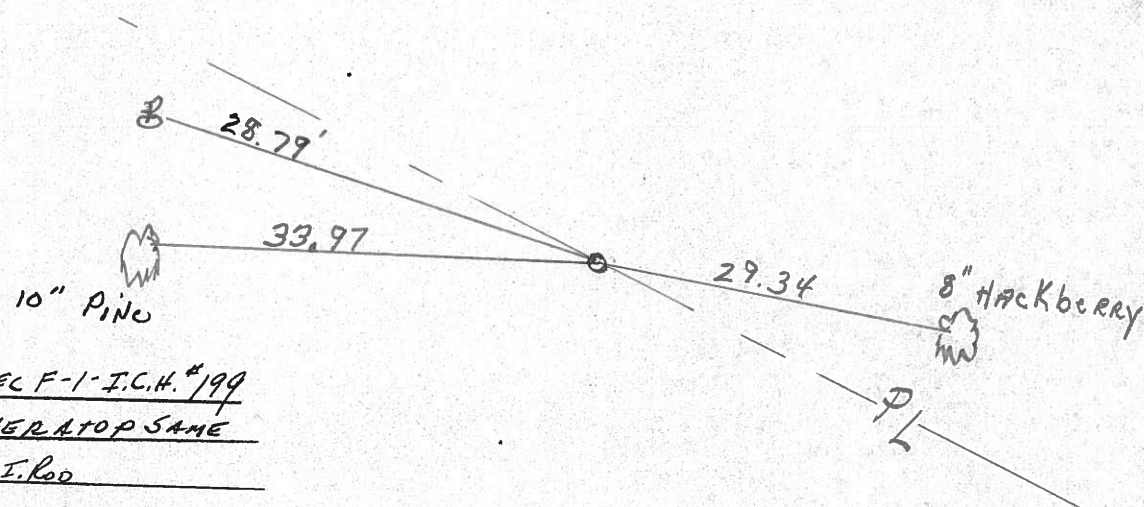
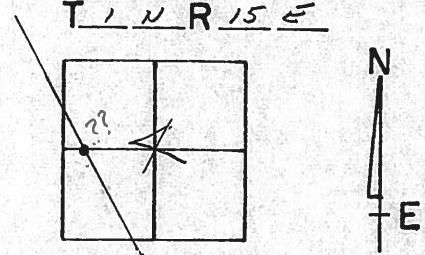
PERSONNEL

NOTES CRONIN
 H.C. RIPPLE
 R.C. BARBOUR MEAS.
GEYMAN

REFERENCE NO. 20
1/11/90
 DATE 12-1-89
 WEATHER SUNNY
 TEMP. 40°

SHEET 22 OF _____
 ROUTE 100
 COUNTY SEN.
 TOWNSHIP EDEN
 SECTION 4
T 1 N R 15 E

TYPE MONUMENT PK + Washer
 ON SURFACE - BELOW 1" below surface
 LEFT - ☉ PAW'T. - RIGHT ☉
 _____ TO _____ EDGE PAVEMENT
 S.L.M. _____



29+36 ± SEC F-1 - I.C.H. #199
P.K. & WASHER AT OP SAME
ATOP 5/8" I. Rod

PERSONNEL	TITLE	PERSONNEL	TITLE
CROWIN		SCHNEIDER	
RIPPLE		MOSSER	
		BARBOUR	

COUNTY SENECA

DATE 3/20/78

S. R. #100

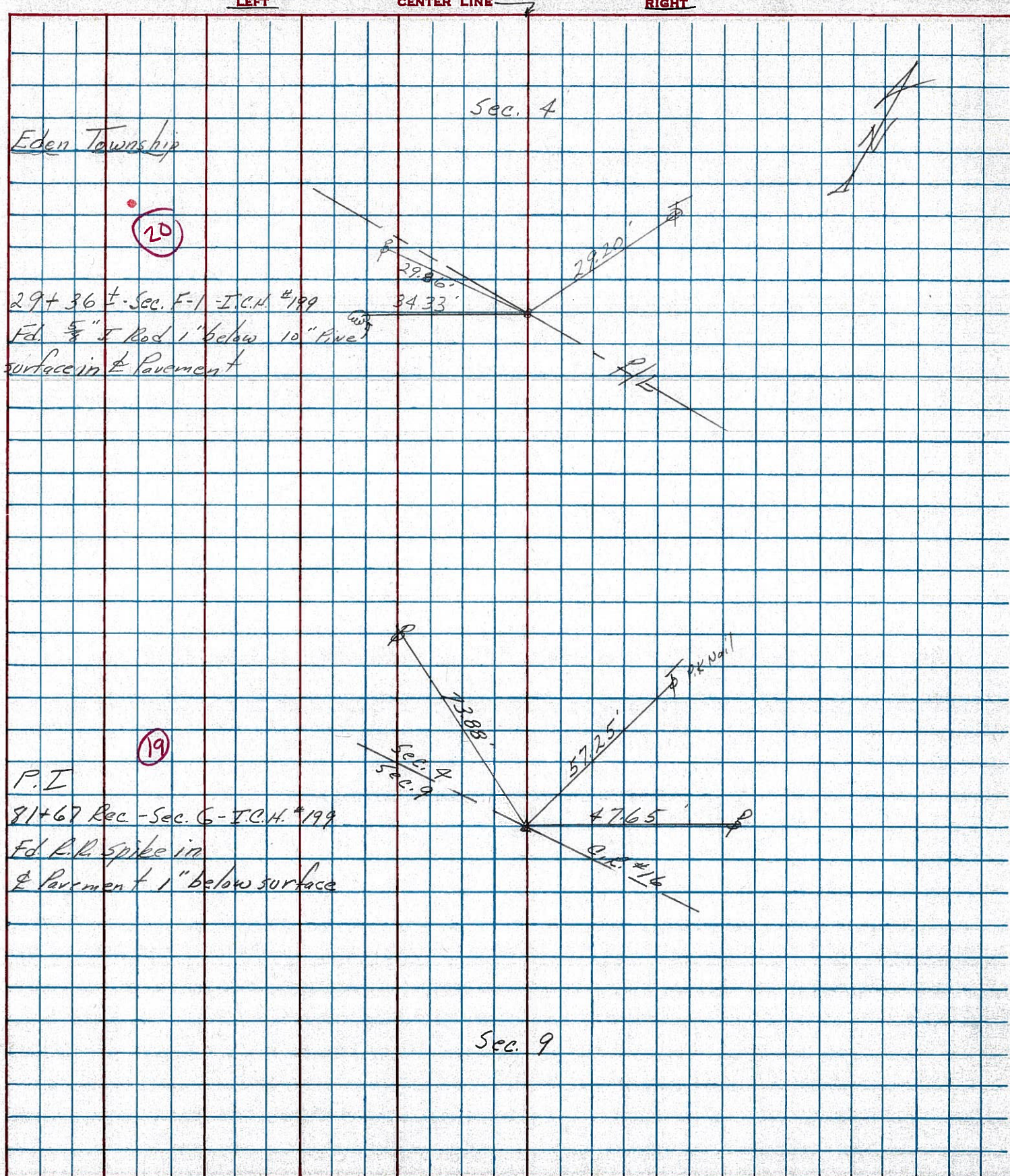
WEATHER sunny-windy

SEC. MELMORE - NORTH

TEMP. 45°

DESCRIPTION TIES FOR CONTROL POINTS

JOB NO. _____



PERSONNEL	TITLE	PERSONNEL	TITLE	COUNTY	Seneca	DATE	3-19-70
Schneider				S. R.	100	WEATHER	Cloudy
Mosser				SEC.	1 mi. South U.S. 224	TEMP.	40°
Barbour							

DESCRIPTION Ties for Control Points JOB NO. _____

