

O.D.O.T. DISTRICT 2 SURVEY OFFICE (USE ONLY)

PERSONNEL

REFERENCE NO. 20 A

SHEET 27 OF 46

NOTES RHOADES

DATE 7/12/21

ROUTE SR 100

H.C. AUBLE

WEATHER CLOUDY

COUNTY SENECA

R.C. NIESE

TEMP. 72°

TOWNSHIP EDEN

SECTION 4

DWG BY WHITAKER

PID 95778

T 1 N R 15 E

TYPE MONUMENT MAG/WASHER

ON SURFACE - ~~BELOW~~ ON

OFFSET C PAVEMENT ON LT : ~~RT~~

10.5' TO RT EDGE PAVEMENT

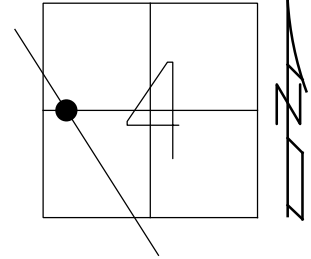
STATION: 336+78

HORZ.DATUM: NAD83(2011)

GEOID: 2012A

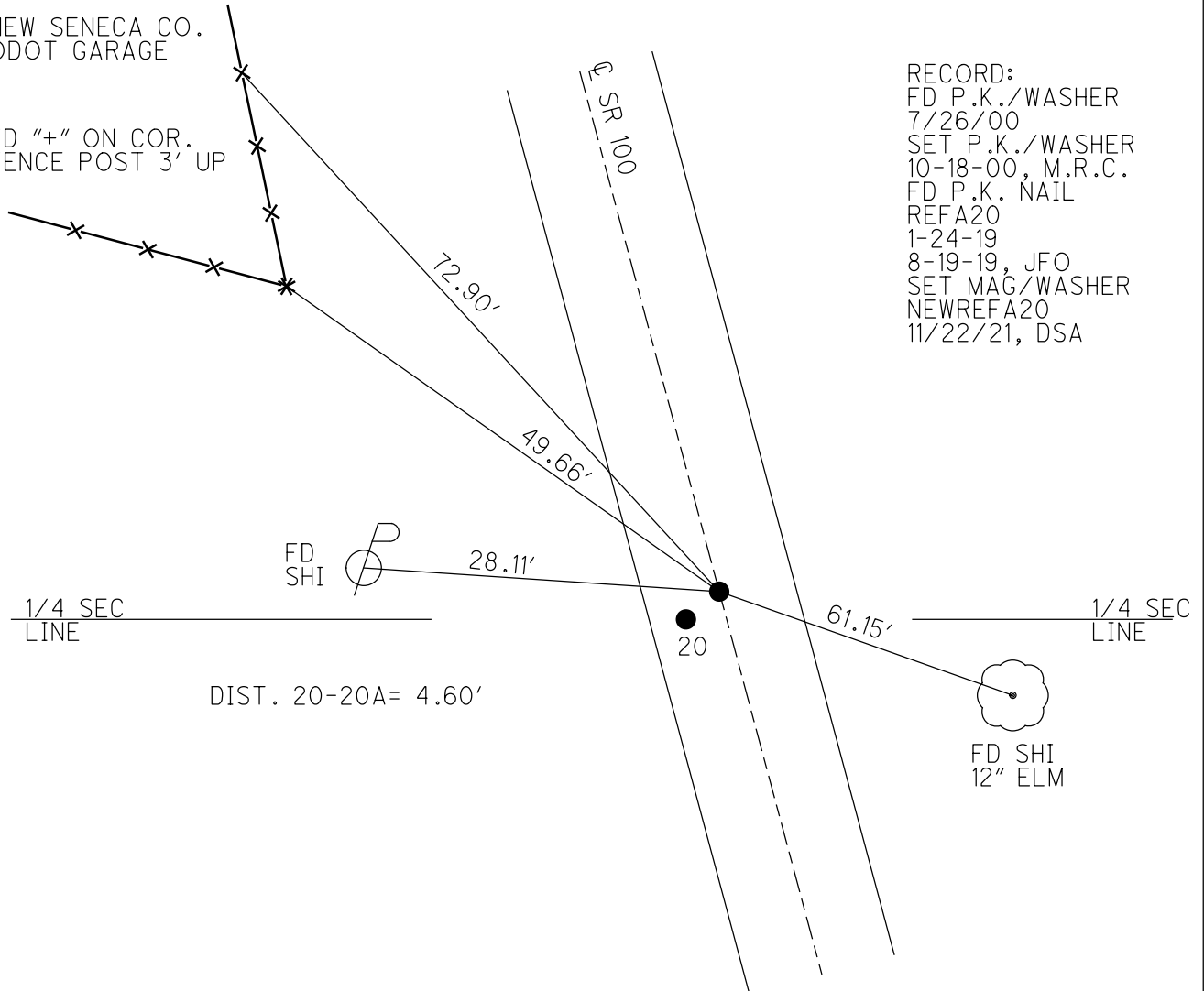
GRID: NORTHING: 512990.365

EASTING: 1789835.312



NEW SENECA CO.
ODOT GARAGE

FD "+" ON COR.
FENCE POST 3' UP



RECORD:
FD P.K./WASHER
7/26/00
SET P.K./WASHER
10-18-00, M.R.C.
FD P.K. NAIL
REFA20
1-24-19
8-19-19, JFO
SET MAG/WASHER
NEWREFA20
11/22/21, DSA

DIST. 20-20A= 4.60'

O.D.O.T. DISTRICT 2 SURVEY OFFICE

PERSONNEL _____

REFERENCE NO. 20

SHEET 23 OF 31

NOTES CANTERBURY

H.C. MOSEK

R.C. CANTERBURY

DATE 7-26-00

WEATHER OVERCAST

TEMP. +80°

ROUTE #100

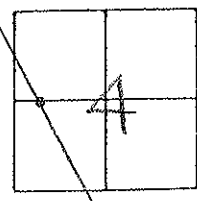
COUNTY SENECA

TOWNSHIP EDEN

SECTION 4

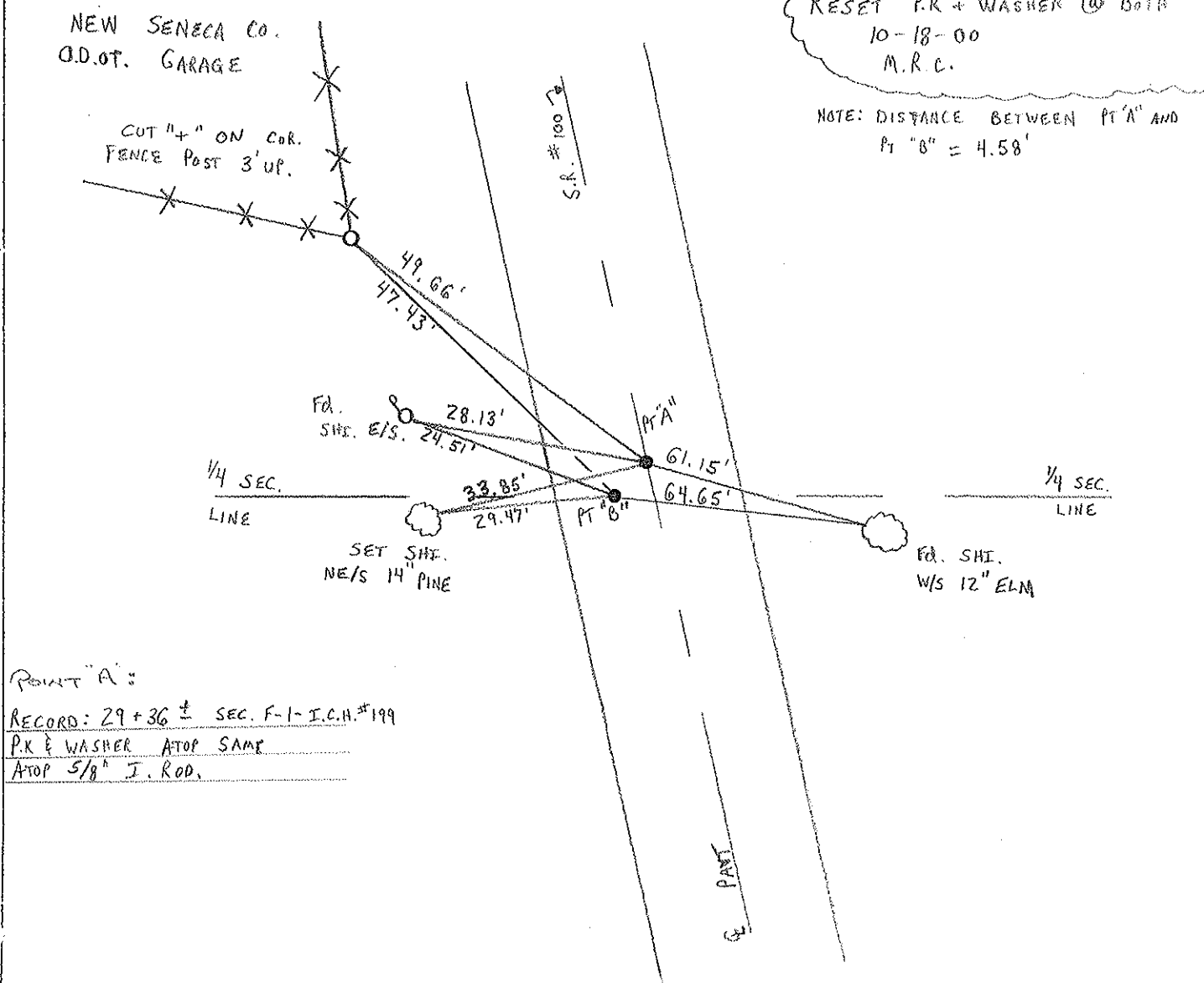
T. 1 N. R. 15 E.

	PT "A"	PT "B"
TYPE MONUMENT	P.K. & WASHER	P.K. & WASHER
ON SURFACE - BELOW	SURFACE	SURFACE
LEFT - & PAW'T. - RIGHT	ON &	4.5 LT &
A = 10.5 TO RT. EDGE PAVEMENT		B = 5.8' TO LT. E.O.P.
S.L.M. A = 336 + 78		B = 336 + 77



RESET P.K. + WASHER @ BOTH
10-18-00
M.R.C.

NOTE: DISTANCE BETWEEN PT "A" AND
PT "B" = 4.58'



POINT "A":
RECORD: 29 + 36 ± SEC. F-1- I.C.H. #199
P.K. & WASHER ATOP SAME
ATOP 5/8" J. ROD.