

O.D.O.T. DISTRICT 2 SURVEY OFFICE (USE ONLY)

PERSONNEL

REFERENCE NO. 22

SHEET 1 OF 19

NOTES RHOADES

DATE 5/26/17

ROUTE SR 224

H.C. O'DONNELL

WEATHER CLOUDY

COUNTY SENECA

R.C. CARSON

TEMP. 63°

TOWNSHIP CLINTON

SECTION 32

DWG BY MILLER PID 102819

T 2 N R 15 E

TYPE MONUMENT MAG/WASHER

ON SURFACE - ~~BELOW~~ ON

OFFSET \varnothing PAVEMENT ON LT : RT

- TO - EDGE PAVEMENT

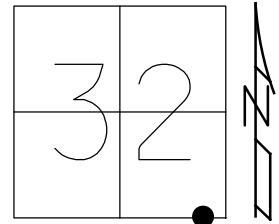
STATION: 367+78.8 REC

HORZ.DATUM: NAD83 (2011)

GEOID: (2012A)

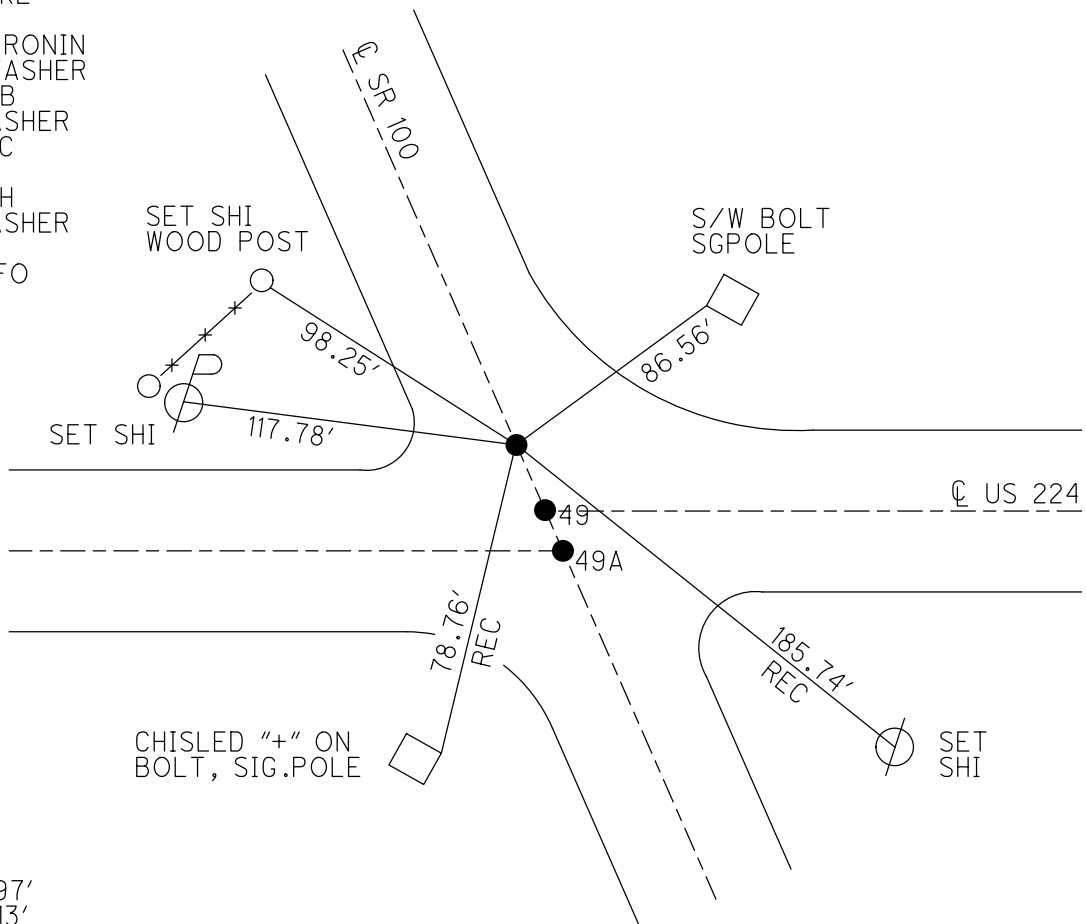
GRID: NORTHING: 515827.359

EASTING: 1788402.382



NOTE: REF 48 SR 224

RECORD: TWP. LINE
 STA. 367+78.8
 FD R.R. SPIKE
 OVER STONE
 FD R.R. SPIKE
 3" DOWN
 11/12/86, CRONIN
 SET MAG/WASHER
 8-18-04, MB
 FD MAG/WASHER
 1-15-13, SDC
 REF 48
 1-16-13, DCH
 FD MAG/WASHER
 REF 48
 5-26-17, JFO



DIST.
 22-49= 32.97'
 49-49A= 8.13'

O.D.O.T. DISTRICT 2 SURVEY OFFICE

PERSONNEL _____

REFERENCE NO. _____

SHEET 25 OF 31

NOTES Cromin

DRAWN 11/13/36

ROUTE 100

H.C. Ripple

DATE 11/12/36

COUNTY Seneca

R.C. Geyman

WEATHER sunny

TOWNSHIP Clinton

Barbour

TEMP. 32°

SECTION 32

T 2 N R 15 E

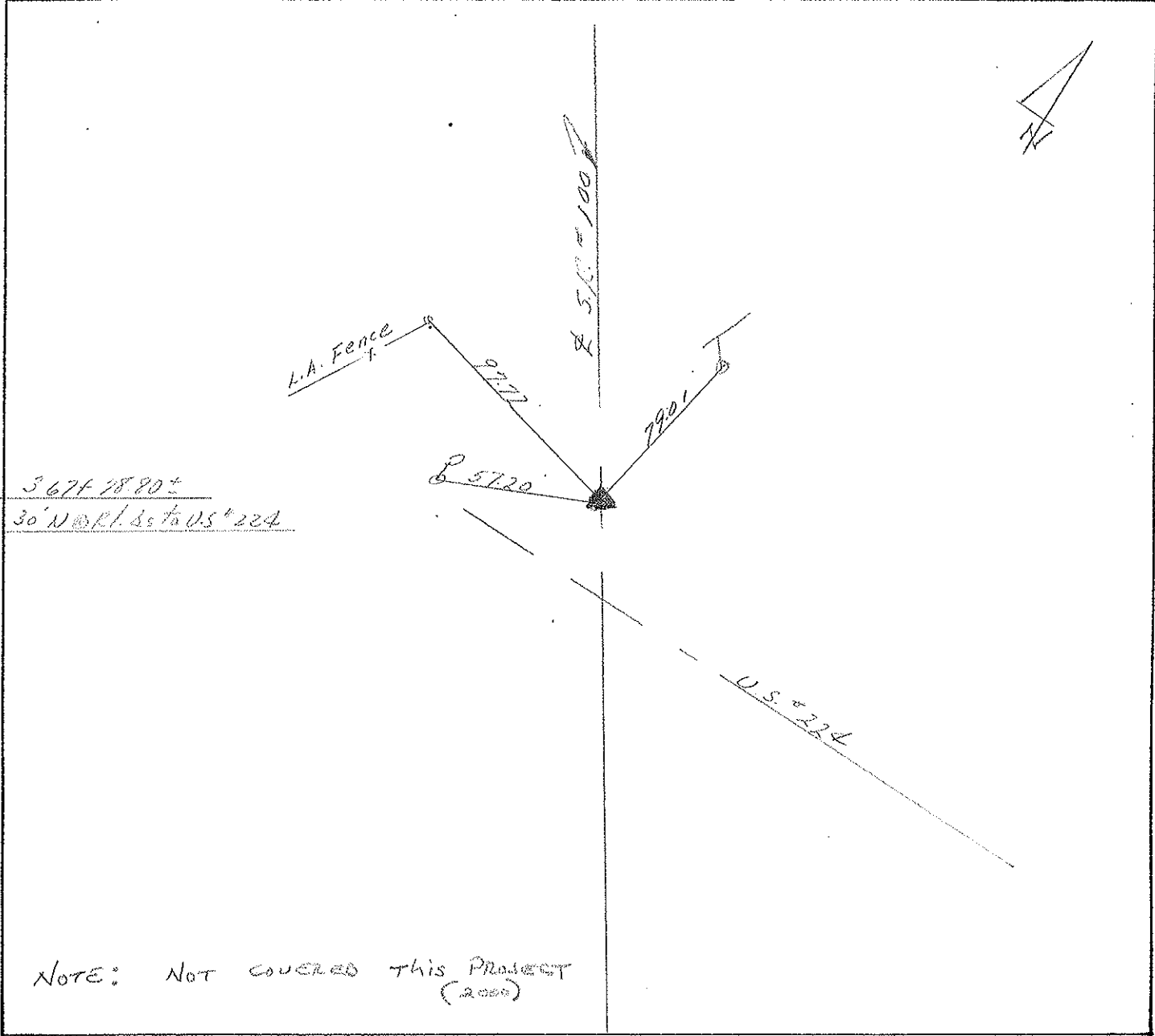
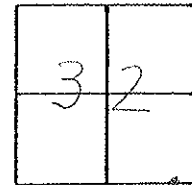
TYPE MONUMENT R.R. spike

ON SURFACE - BELOW 3" below

LEFT- & PAV'T. - RIGHT & route

___ JO ___ EDGE PAVEMENT

S.L.M. _____



3677.78 ±
30° N @ R / S to U.S. #224

NOTE: NOT COVERED THIS PROJECT (2000)