

O.D.O.T. DISTRICT 2 SURVEY OFFICE (USE ONLY)

PERSONNEL

REFERENCE NO. 22

SHEET 30 OF 46

NOTES RHOADES

DATE 5/26/17

ROUTE SR 224

H.C. O'DONNELL

WEATHER CLOUDY

COUNTY SENECA

R.C. CARSON

TEMP. 63°

TOWNSHIP CLINTON

DWG BY MILLER

PID 102819

SECTION 32

T 2 N R 15 E

TYPE MONUMENT MAG/WASHER

ON SURFACE - ~~BELOW~~ ON

OFFSET ☉ PAVEMENT ON LT : RT

- TO - EDGE PAVEMENT

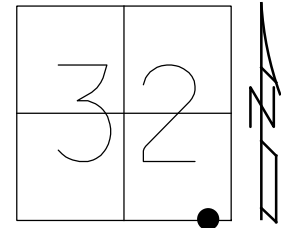
STATION: 367+78.8 REC

HORZ.DATUM: NAD83 (2011)

GEOID: (2012A)

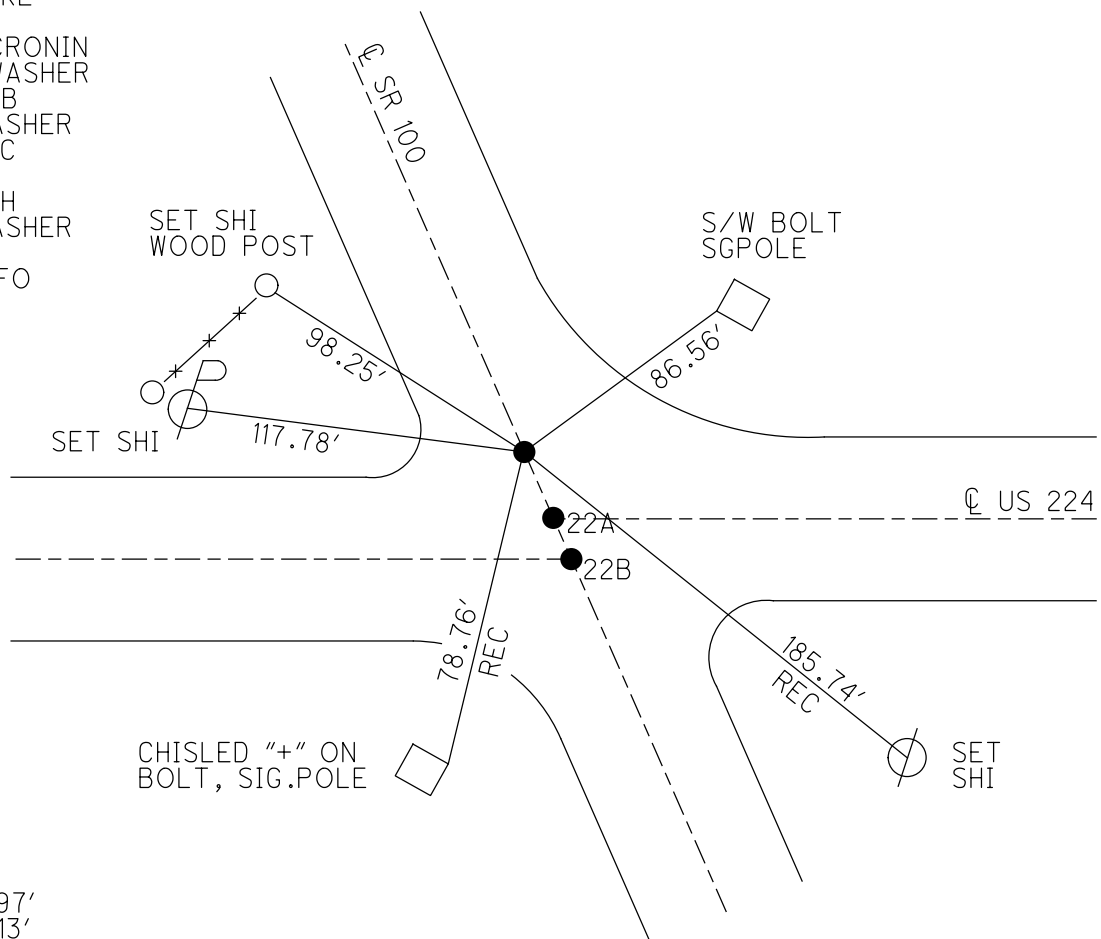
GRID: NORTHING: 515827.359

EASTING: 1788402.382



NOTE: REF 48 SR 224

RECORD: TWP. LINE
 STA. 367+78.8
 FD R.R. SPIKE
 OVER STONE
 FD R.R. SPIKE
 3" DOWN
 11/12/86, CRONIN
 SET MAG/WASHER
 8-18-04, MB
 FD MAG/WASHER
 1-15-13, SDC
 REF48
 1-16-13, DCH
 FD MAG/WASHER
 REF48
 5-26-17, JFO



DIST.
 22-49= 32.97'
 49-49A= 8.13'

O.D.O.T. DISTRICT 2 SURVEY OFFICE (USE ONLY)

PERSONNEL

REFERENCE NO. 23

SHEET 31 OF 38

NOTES CANTERBURY

DATE 7-26-00

ROUTE SR 100

H.C. MOSER

WEATHER CLOUDY

COUNTY SENECA

R.C. CANTERBURY

TEMP. 80°

TOWNSHIP CLINTON

DWG BY NIESE PID 107060

SECTION 32

T 2 N R 15 E

TYPE MONUMENT P.K./WASHER

ON SURFACE - ~~BELOW~~ ON

OFFSET Q PAVEMENT ON _____ LT : RT

10.2' TO LT EDGE PAVEMENT

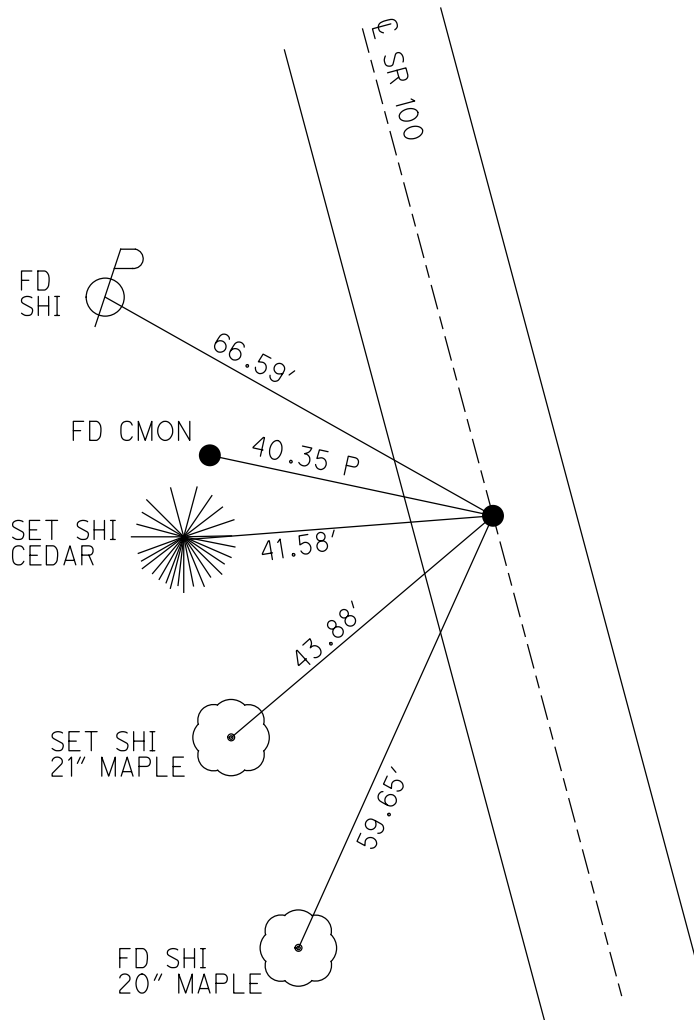
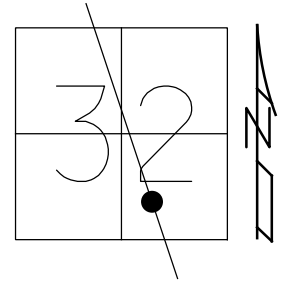
STATION: 387+09

HORZ.DATUM: NAD83(2011)

GEOID: 2012A

GRID: NORTHING: 517548.613

EASTING: 1787535.965



RECORD:
 SLM.388+75.47±
 FD P.K./WASHER
 ATOP R.R. SPIKE
 FD P.K./WASHER
 7/26/00
 SET P.K./WASHER
 10/19/00, MC
 FD P.K. NAIL
 REF23
 2-4-19
 8-19-19, JFO

O.D.O.T. DISTRICT 2 SURVEY OFFICE

PERSONNEL _____

REFERENCE NO. _____

SHEET 26 OF 31

NOTES CANTERBURY

H.C. MOSEY

R.C. CANTERBURY

DATE 7-26-00

WEATHER OVERCAST

TEMP. +80°

ROUTE # 100

COUNTY SENECA

TOWNSHIP CLINTON

SECTION 32

T Z N R 15 E

TYPE MONUMENT P.K. + WASHER

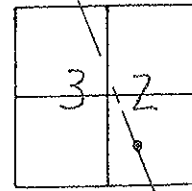
ON SURFACE - ~~BELOW~~ SURFACE

~~LEFT - & PAVT.~~ - RIGHT ON & PAVT.

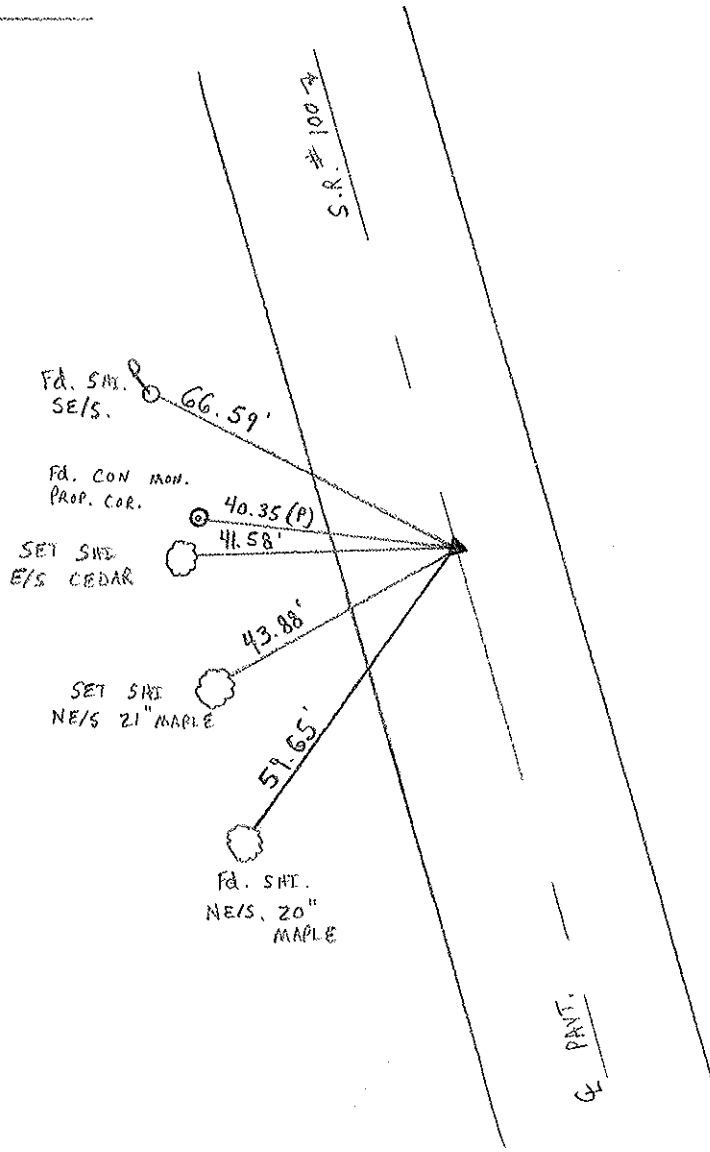
10.2' TO LT EDGE PAVEMENT

S.L.M. 387+09

RESET P.K. + WASHER
10-19-00
M.R.C.



RECORD: P.K. & WASHER ATOP
R.R. SPK.
388+75.47 ± SLM



O.D.O.T. DISTRICT 2 SURVEY OFFICE

PERSONNEL

REFERENCE NO. _____

SHEET _____ OF _____

NOTES CROWIN WIL DRAWN 6-15-89

H.C. RIPPLE DATE 6-13-89

R.C. GEYMAN WEATHER OVERCAST

BARBOUR TEMP. 72°

ROUTE SR-100

COUNTY SENECA

TOWNSHIP CLINTON

SECTION 32

T2 N R 15 E

TYPE MONUMENT PK + WASHER

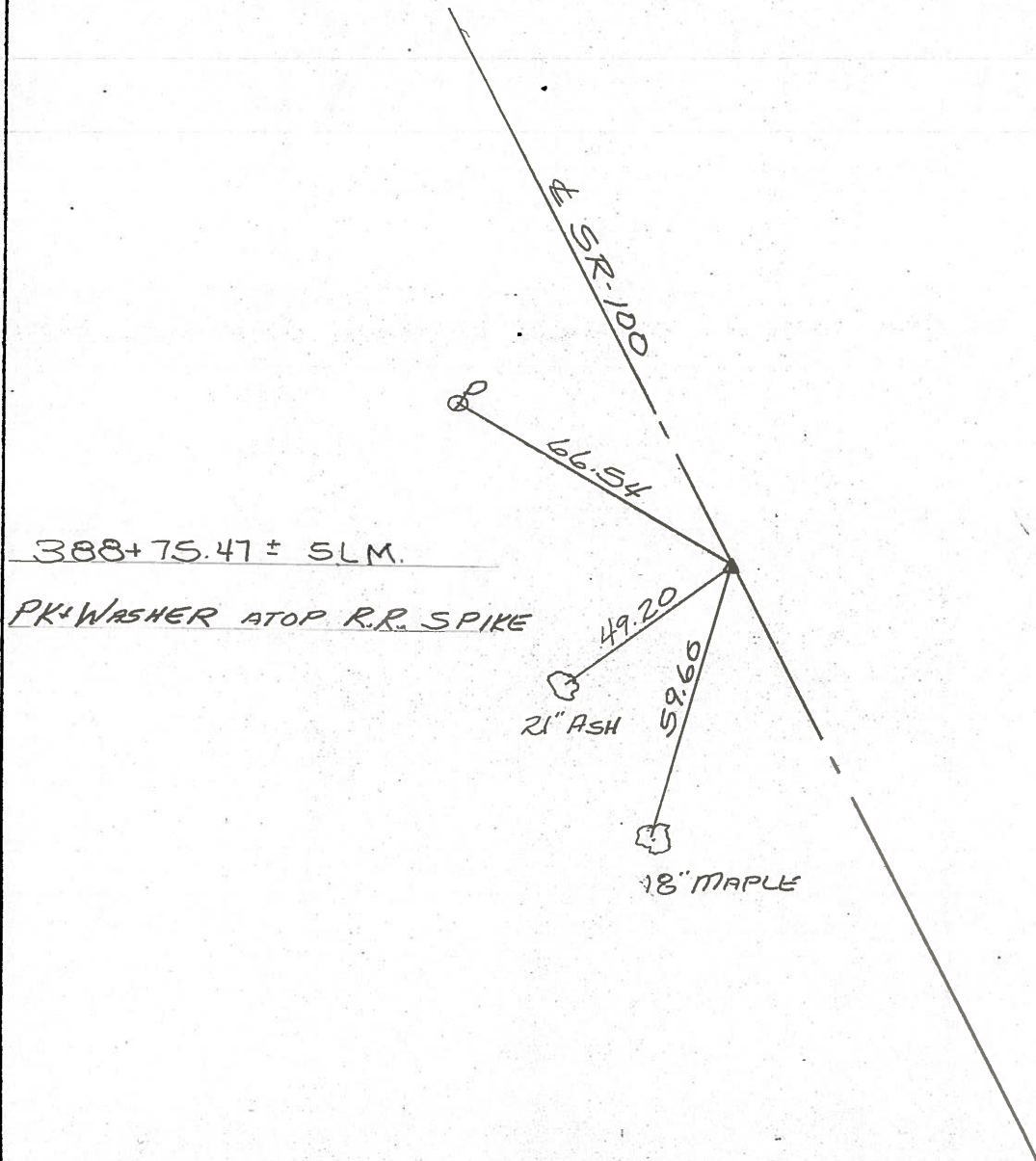
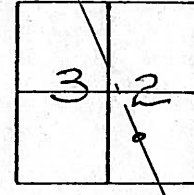
ON SURFACE - BELOW ON SURFACE

LEFT- & PAV'T. - RIGHT 1' ± LT. & PAV'T

TO _____ EDGE PAVEMENT

S.L.M. 388+75.47

(23)



O.D.O.T. DISTRICT 2 SURVEY OFFICE

PERSONNEL

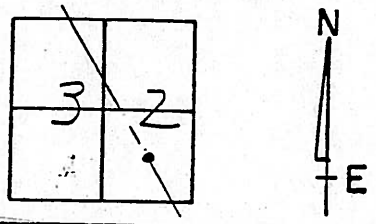
NOTES Cronin
 H.C. Ripple
 R.G. Geyman
Barbour

REFERENCE NO. _____
 DRAWN 11/13/86
 DATE 11/12/86
 WEATHER sonny
 TEMP. 32°

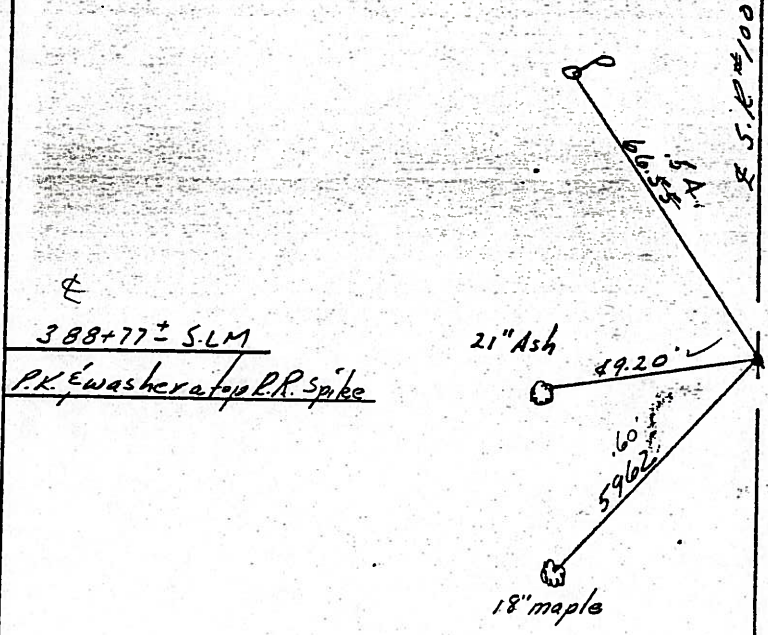
SHEET _____ OF _____
 ROUTE #100
 COUNTY Seneca
 TOWNSHIP Clinton
 SECTION 32
T 2 N R 15 E

TYPE MONUMENT P.K. washer
 ON SURFACE - BELOW on surface
 LEFT - & PAV'T. - RIGHT 1/2 Lt. & Pav't
 TO _____ EDGE PAVEMENT
 S.L.M. _____

(23)



6/13/89
 OVERCAST
 72°



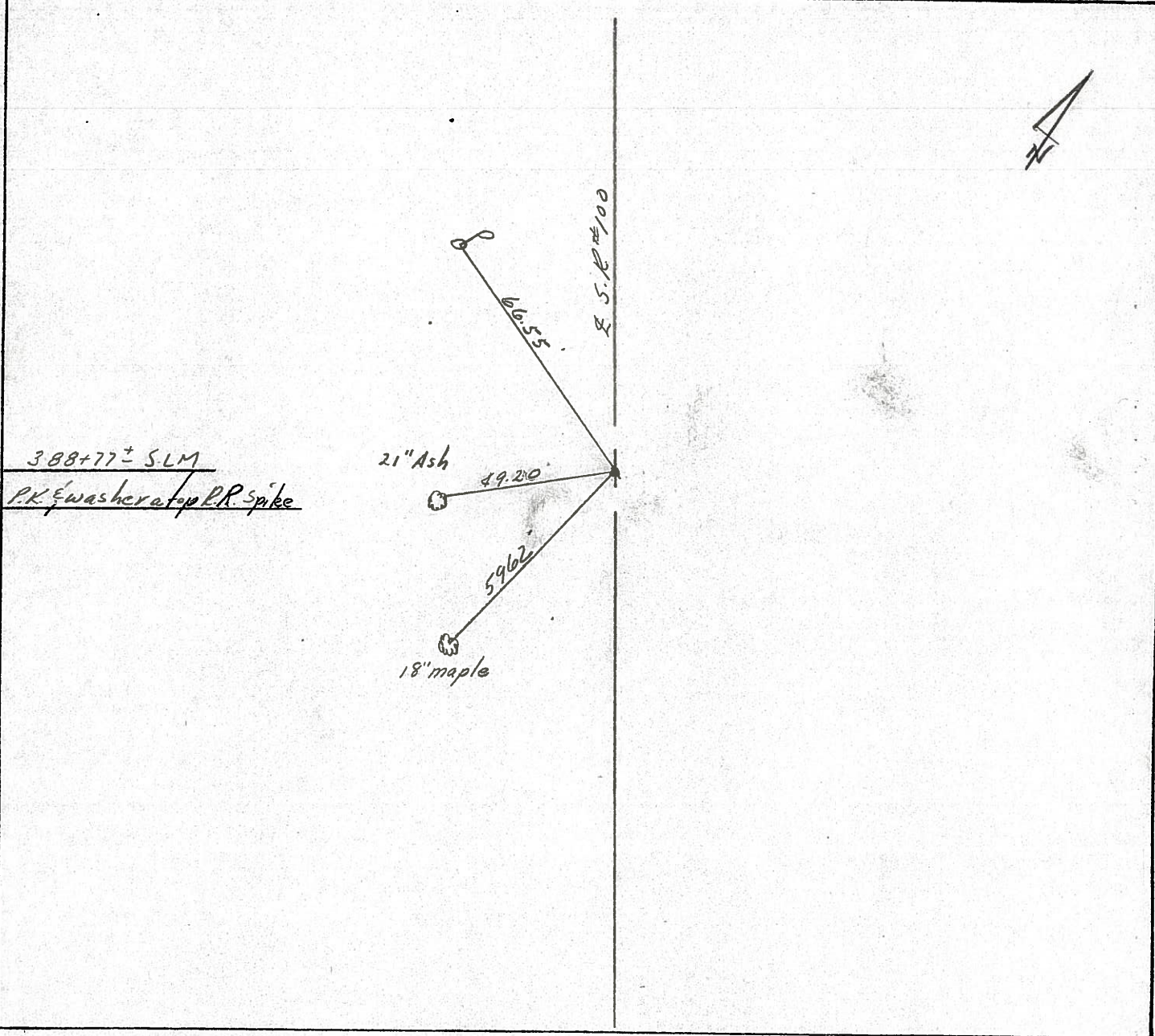
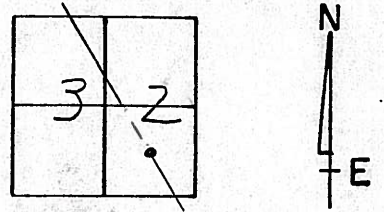
N. OF U.S. 224

O.D.O.T. DISTRICT 2 SURVEY OFFICE

PERSONNEL _____ REFERENCE NO. _____ SHEET _____ OF _____
 NOTES Cronin DRAWN 11/13/86
 H.C. Ripple DATE 11/12/86 ROUTE #100
 R.C. Geyman WEATHER sunny COUNTY Seneca
Barbour TEMP. 32° TOWNSHIP Clinton
 SECTION 32
T 2 N R 15 E

TYPE MONUMENT P.K. washer
 ON SURFACE - BELOW on surface
 LEFT- & PAV'T. - RIGHT 1/2 Lt & Pav't
 TO _____ EDGE PAVEMENT
 S.L.M. _____

23



SHEET NO. 1

PERSONNEL TITLE PERSONNEL TITLE PERSONNEL TITLE PERSONNEL TITLE PERSONNEL TITLE

RIPPLE _____ COUNTY Seneca DATE 6/3/86

BARBOUR _____ S. R. 100 WEATHER SUNNY & Cool

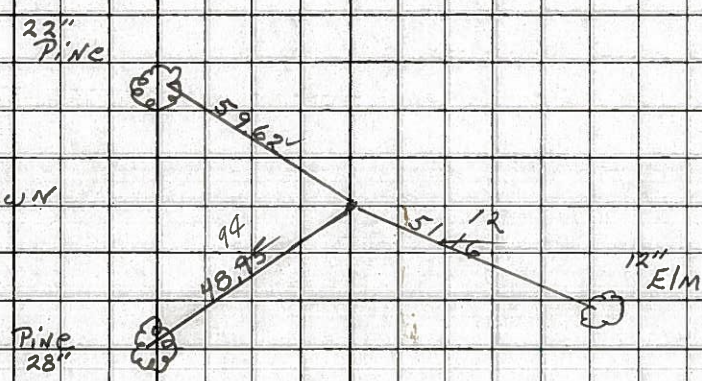
Geyman _____ SEC. By-Pass to Corp. Line TEMP. 70°

DESCRIPTION Ties for Control Points JOB NO. _____

LEFT CENTER LINE RIGHT

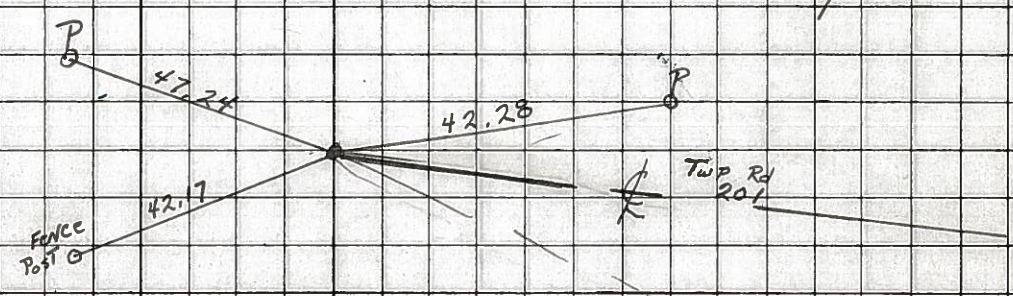
(26)

4
314+73 ±
Bolt Spk. 2" DOWN



(24)

399+10 ±
Twp. Rd. 201
R/R Spk.
ON SURFACE
OLD ATTICA Rd
1 1/2" nail



11/12/86
sunny
32°

(23)

388+77 ±

Nail & SHINER

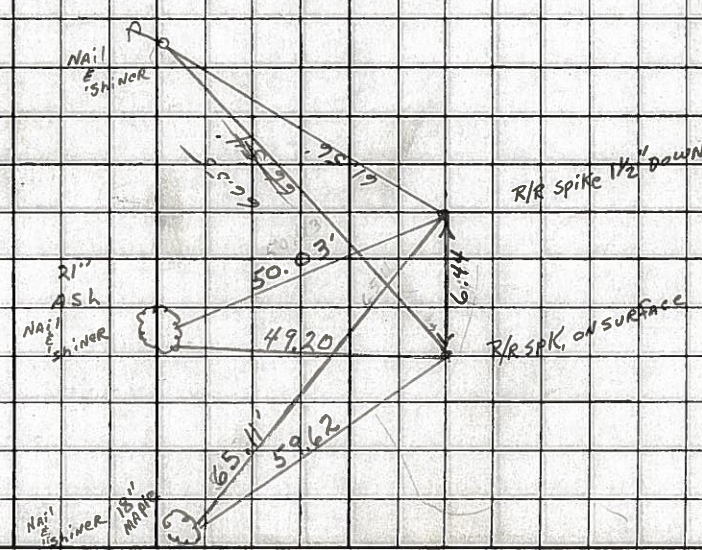
21" ASH

Nail & SHINER

Nail & SHINER 18" MAPLE

R/R spike 1 1/2" DOWN

R/R SPK. ON SURFACE



PERSONNEL TITLE PERSONNEL TITLE

COUNTY Seneca DATE 4-29-70

Schneider

S. R. 100 WEATHER Partly cloud,

Mosser

SEC. By-pass to Corp. Line TEMP. 80°

Barbour

Potts

DESCRIPTION Ties for Control Points LEFT CENTER LINE RIGHT JOB NO.

26

414+

Reat spk. 1" down

24

399+0

Min spk.

23

388+

R.R. spk.

Brass Pin set in cond.

Nail & shiner 15" Ash

Tiffin & St. Francis Ave. Corp.

did not find

12" Pins

N&S out

12" Pine

Tiffin Corp.

