

O.D.O.T. DISTRICT 2 SURVEY OFFICE (USE ONLY)

PERSONNEL _____ REFERENCE NO. 24 SHEET 32 OF 46
 NOTES RHOADES DATE 7/9/21 ROUTE SR 100
 H.C. AUBLE WEATHER CLOUDY COUNTY SENECA
 R.C. NIESE TEMP. 69° TOWNSHIP CLINTON
 SECTION 32
 DWG BY WHITAKER PID 95778 T 2 N R 15 E

TYPE MONUMENT P.K. NAIL

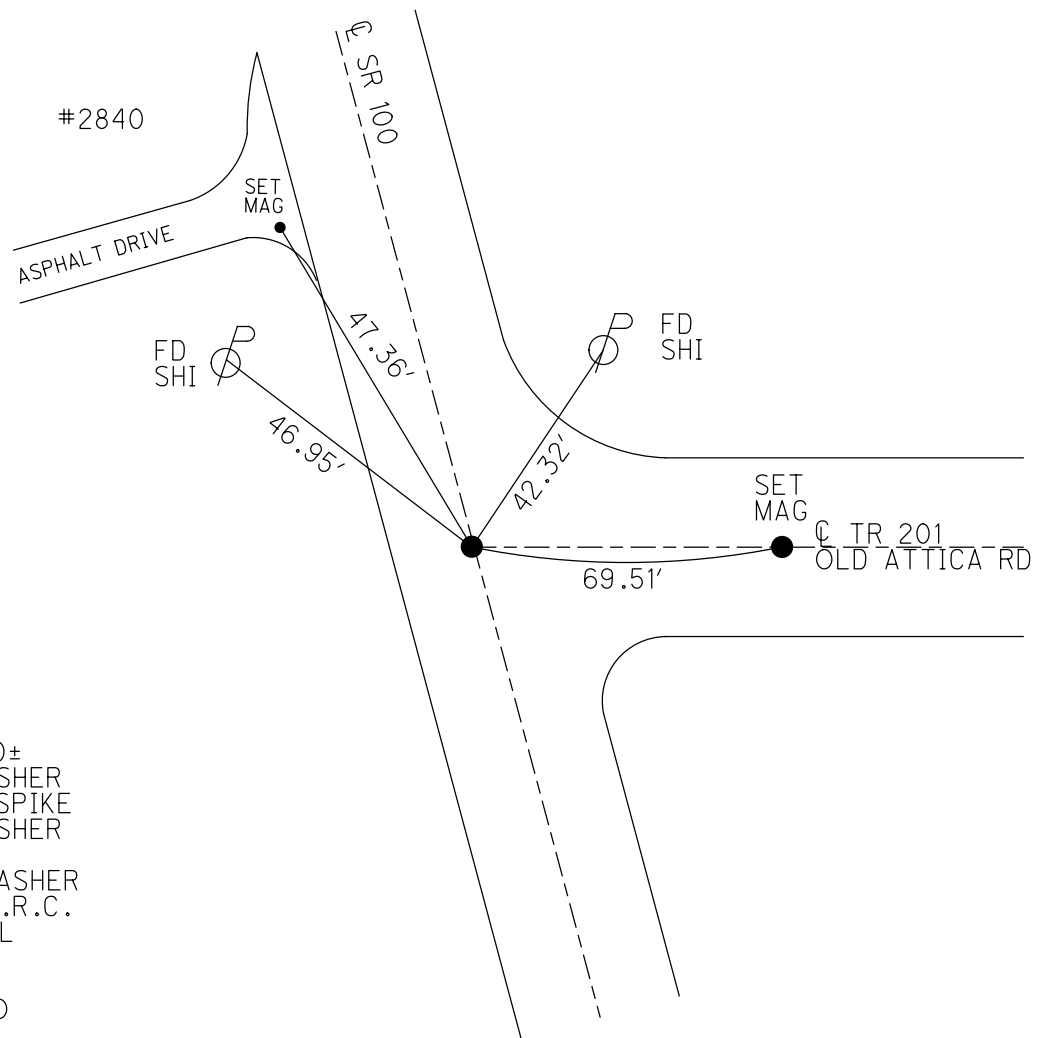
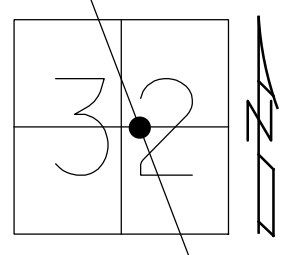
ON SURFACE - ~~BELOW~~ ON

OFFSET Q PAVEMENT ON LT : RT
9.5' TO LT EDGE PAVEMENT

STATION: 397+39

HORZ. DATUM: NAD83(2011) GEOID: 2012A

GRID: NORTHING: 518467.742 EASTING: 1787067.475

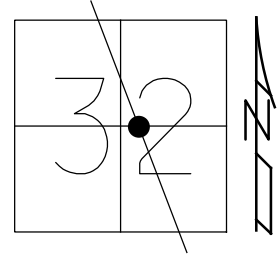


RECORD:
 SLM. 399+10±
 FD P.K./WASHER
 ATOP R.R. SPIKE
 FD P.K./WASHER
 7/26/00
 SET P.K.+WASHER
 10-19-00, M.R.C.
 FD P.K. NAIL
 REF 24
 2-14-19
 8-19-19, JFO

O.D.O.T. DISTRICT 2 SURVEY OFFICE (USE ONLY)

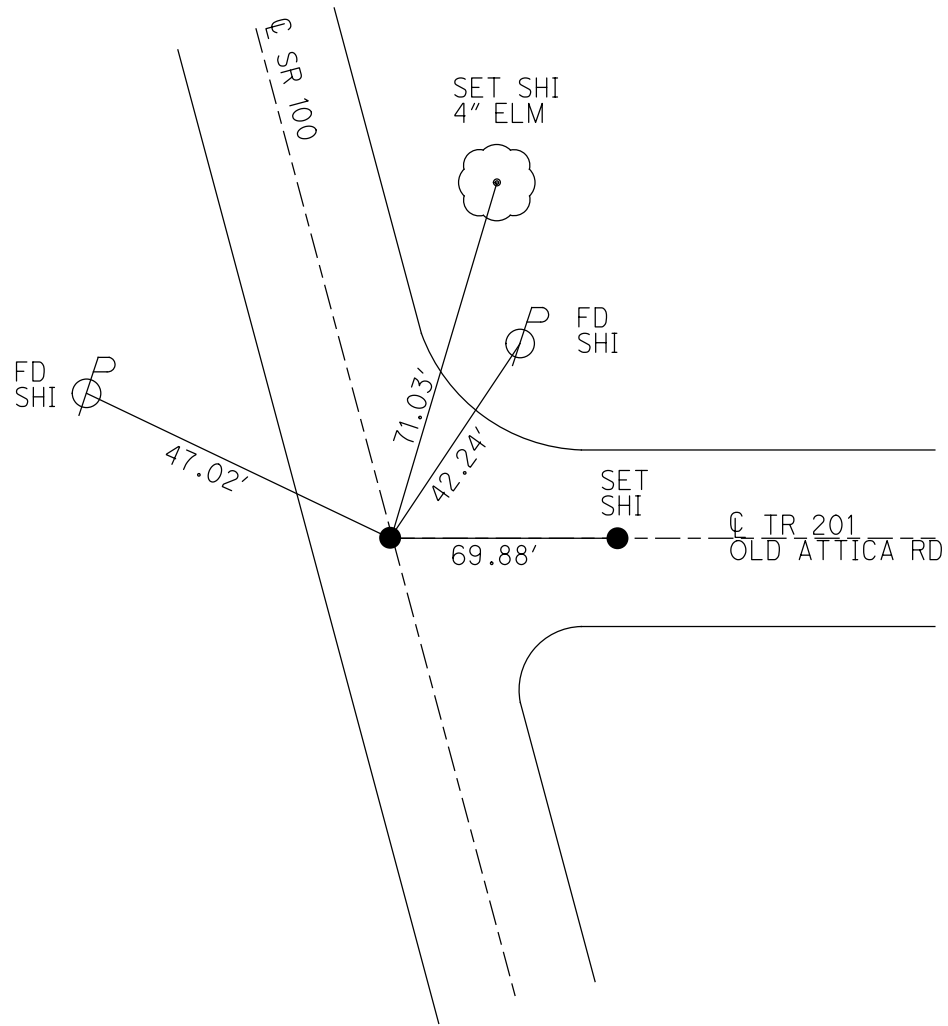
PERSONNEL _____ REFERENCE NO. 24 SHEET 32 OF 38
 NOTES CANTERBURY DATE 7-26-00 ROUTE SR 100
 H.C. MOSER WEATHER CLOUDY COUNTY SENECA
 R.C. CANTERBURY TEMP. 80° TOWNSHIP CLINTON
 SECTION 32
 DWG BY NIESE PID 107060 T 2 N R 15 E

TYPE MONUMENT P.K./WASHER
 ON SURFACE - ~~BELOW~~ ON
 OFFSET Q PAVEMENT ON LT : RT
9.5' TO LT EDGE PAVEMENT
 STATION: 397+39



HORZ. DATUM: NAD83(2011) GEOID: 2012A
 GRID: NORTHING: 518467.742 EASTING: 1787067.475

RECORD:
 SLM. 399+10+
 FD P.K./WASHER
 ATOP R.R. SPIKE
 FD P.K./WASHER
 7/26/00
 SET P.K.+WASHER
 10-19-00, M.R.C.
 FD P.K. NAIL
 REF24
 2-14-19
 8-19-19, JFO



O.D.O.T. DISTRICT 2 SURVEY OFFICE

PERSONNEL _____

REFERENCE NO. _____

SHEET 27 OF 31

NOTES CANTERBURY

H.C. MOSER

R.C. CANTERBURY

DATE 7-26-00

WEATHER OVERCAST

TEMP. +80°

ROUTE #100

COUNTY SENECA

TOWNSHIP CLINTON

SECTION 32

T. 2 N. R. 15 E.

TYPE MONUMENT P.R. + WASHER

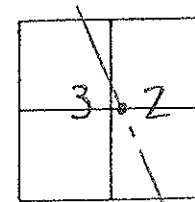
ON SURFACE - BELOW SURFACE

~~LEFT - & PAVT.~~ - ~~RIGHT~~ ON & PAVT.

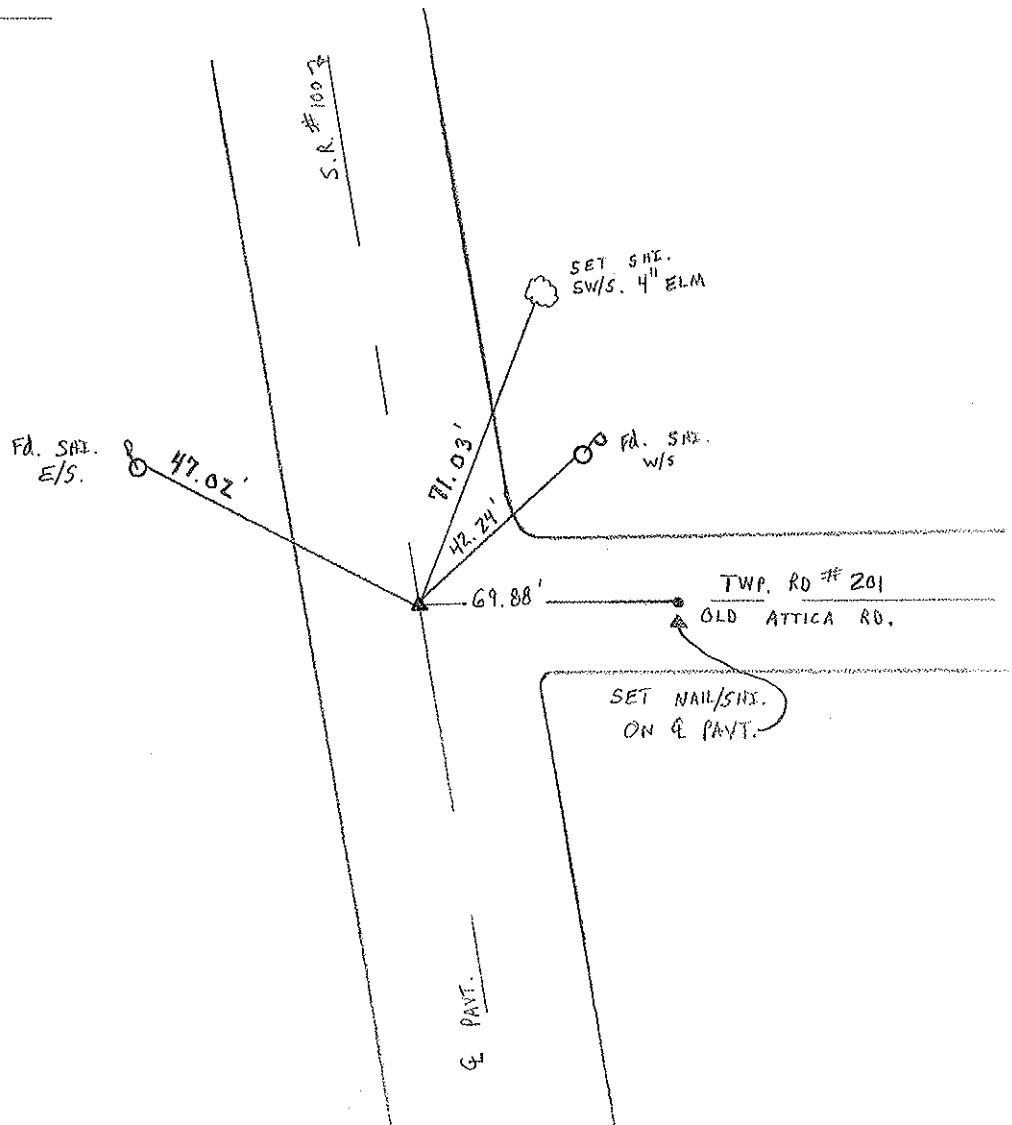
9.5' TO LT. EDGE PAVEMENT

S.L.M. 397+39

RESET P.R. + WASHER
 10-19-00
 M.R.C.



RECORD: P.R. & WASHER ATOP
 R.R. SPK.
397+10 ± S.L.M.



O.D.O.T. DISTRICT 2 SURVEY OFFICE

PERSONNEL

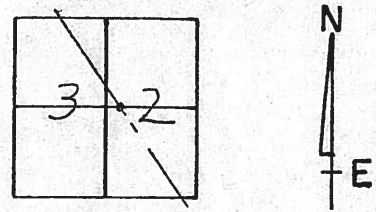
NOTES Cronin
H.C. Ripple
R.C. Geyman
Barbour

REFERENCE NO. _____
DRAWN 11/13/86
DATE 11/12/86
WEATHER sunny
TEMP. 32°

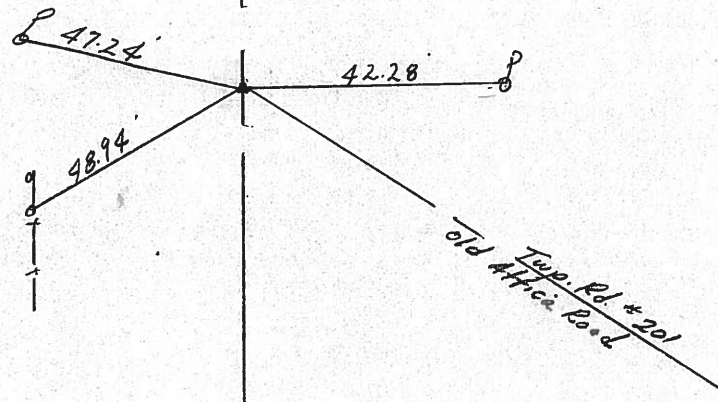
SHEET _____ OF _____
ROUTE #100
COUNTY Seneca
TOWNSHIP Clinton
SECTION 32
T 2 N R 15 E

TYPE MONUMENT P.K. & washer
ON SURFACE - BELOW on surface
LEFT - & PAV'T. - RIGHT 1' ± Lt. & Pavt.
_____ TO _____ EDGE PAVEMENT
S.L.M. _____

(24)



399+10± S.L.M.
P.K. & washer atop P.R. spike



PERSONNEL TITLE PERSONNEL TITLE COUNTY Seneca DATE 6/3/86
 Rippie
 BARBOUR S. R. 100 WEATHER Sunny & Cool
 Geyman
 SEC. By-Pass to Corp. Line TEMP. 70°

DESCRIPTION Ties for Control Points JOB NO.
 LEFT CENTER LINE RIGHT

26

314+73 ±

Bolt Spk. 2" DOWN

23" PINE



59.62'

15/16" IR

12" ELM

44 48.95'

PINE 28"



24

399+10 ±

Twp. Rd. 201
R/R Spk.
ON SURFACE
OLD ATTICA Rd
1 1/2" IR



47.24'

42.28'



FENCE POST

42.17'

TWP RD 201

11/12/86
sunny
32°

23

388+77 ±

NAIL IN SHINER



75.29'

R/R SPIKE 1 1/2" DOWN

50.83'

21" ASH



49.20'

R/R SPK. ON SURFACE

NAIL IN SHINER



65.11'

59.62'

PERSONNEL TITLE PERSONNEL TITLE

COUNTY Seneca DATE 4-29-70

Schneider

S. R. 100

WEATHER Partly cloudy

Mosser

SEC. By-pass to Corp. Line TEMP 80°

Barbour

Potts

DESCRIPTION

Ties for Control Points

JOB NO.

LEFT

CENTER LINE

RIGHT

(26)

414+

~~Rail~~ spk. 1" down

(24)

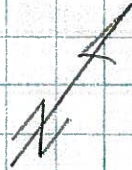
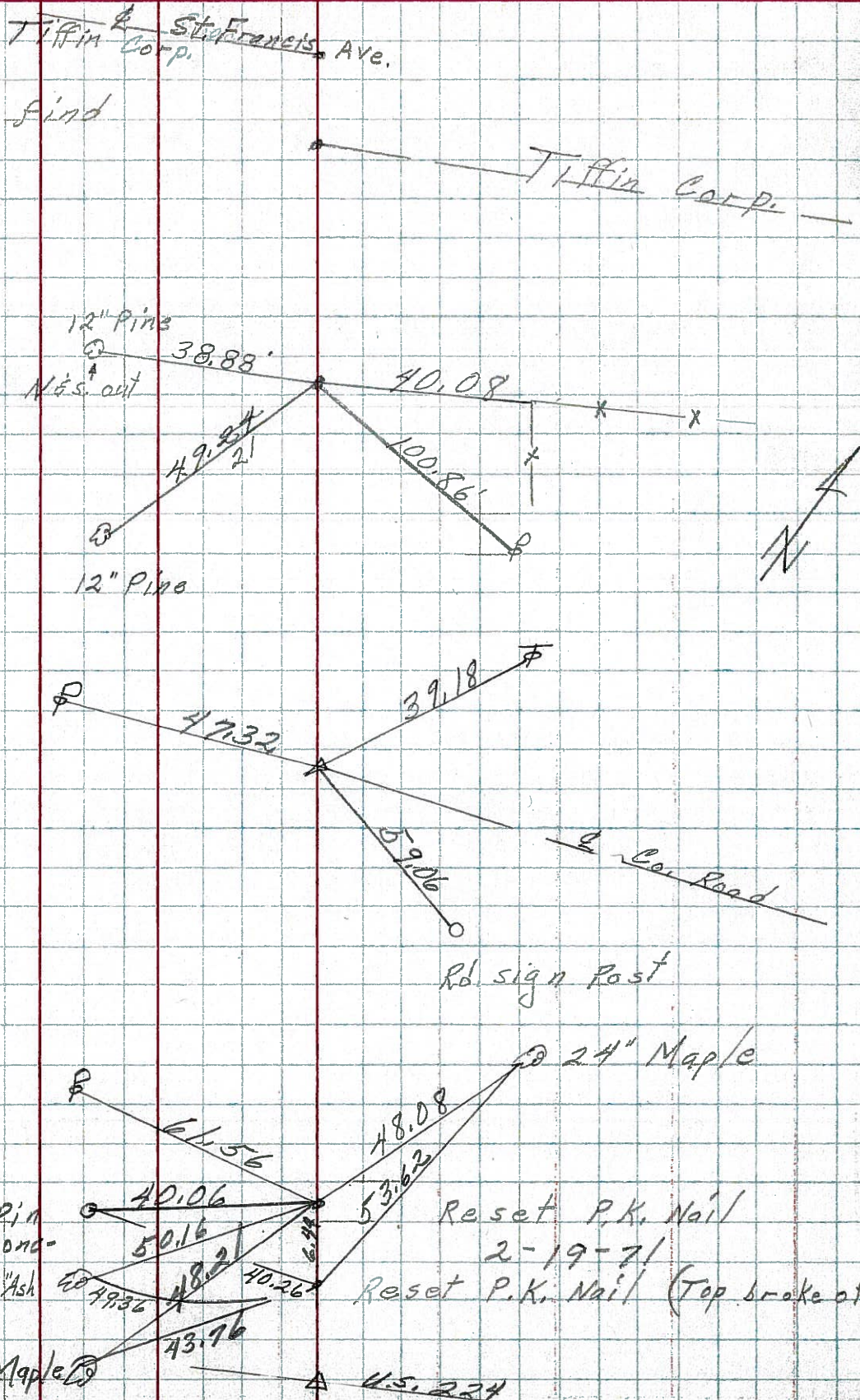
399+0

Miner spk.

(23)

388+

R.R. spk. Brass Pin set in cond-
Nail & shiner 15" Ash



30" Maple

Reset P.K. Nail (Top broke off)

Reset P.K. Nail

2-19-71

U.S. 224