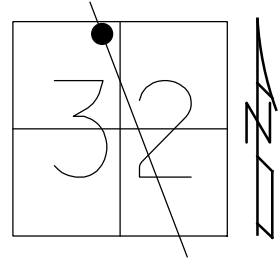


O.D.O.T. DISTRICT 2 SURVEY OFFICE (USE ONLY)

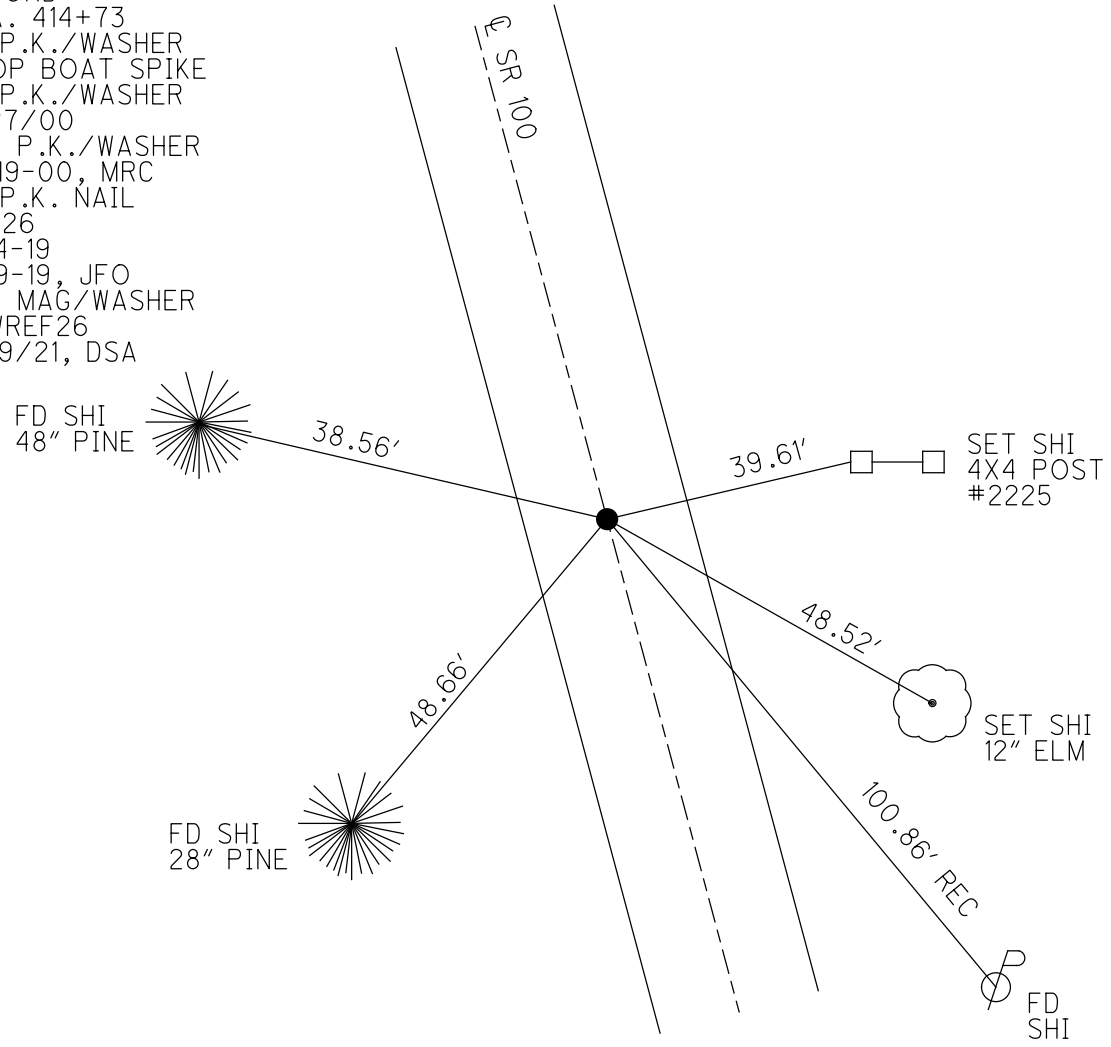
PERSONNEL \_\_\_\_\_ REFERENCE NO. 26 SHEET 34 OF 46  
 NOTES RHOADES DATE 7/9/21 ROUTE SR 100  
 H.C. AUBLE WEATHER CLOUDY COUNTY SENECA  
 R.C. NIESE TEMP. 69° TOWNSHIP CLINTON  
 DWG BY WHITAKER PID 107060 SECTION 32  
 T 2 N R 15 E

TYPE MONUMENT MAG/WASHER  
 ON SURFACE - ~~BELOW~~ ON \_\_\_\_\_  
 OFFSET  $\perp$  PAVEMENT 8" ~~±~~ : RT  
9.2' TO RT EDGE PAVEMENT  
 STATION: 412+98



HORZ.DATUM: NAD83(2011) GEOID: 2012A  
 GRID: NORTHING: 519857.408 EASTING: 1786358.912

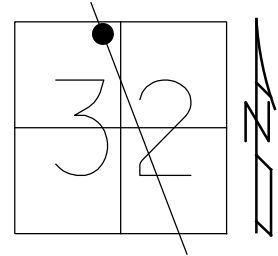
RECORD:  
 STA. 414+73  
 FD P.K./WASHER  
 ATOP BOAT SPIKE  
 FD P.K./WASHER  
 7/27/00  
 SET P.K./WASHER  
 10-19-00, MRC  
 FD P.K. NAIL  
 REF26  
 2-14-19  
 8-19-19, JFO  
 SET MAG/WASHER  
 NEWREF26  
 11/19/21, DSA



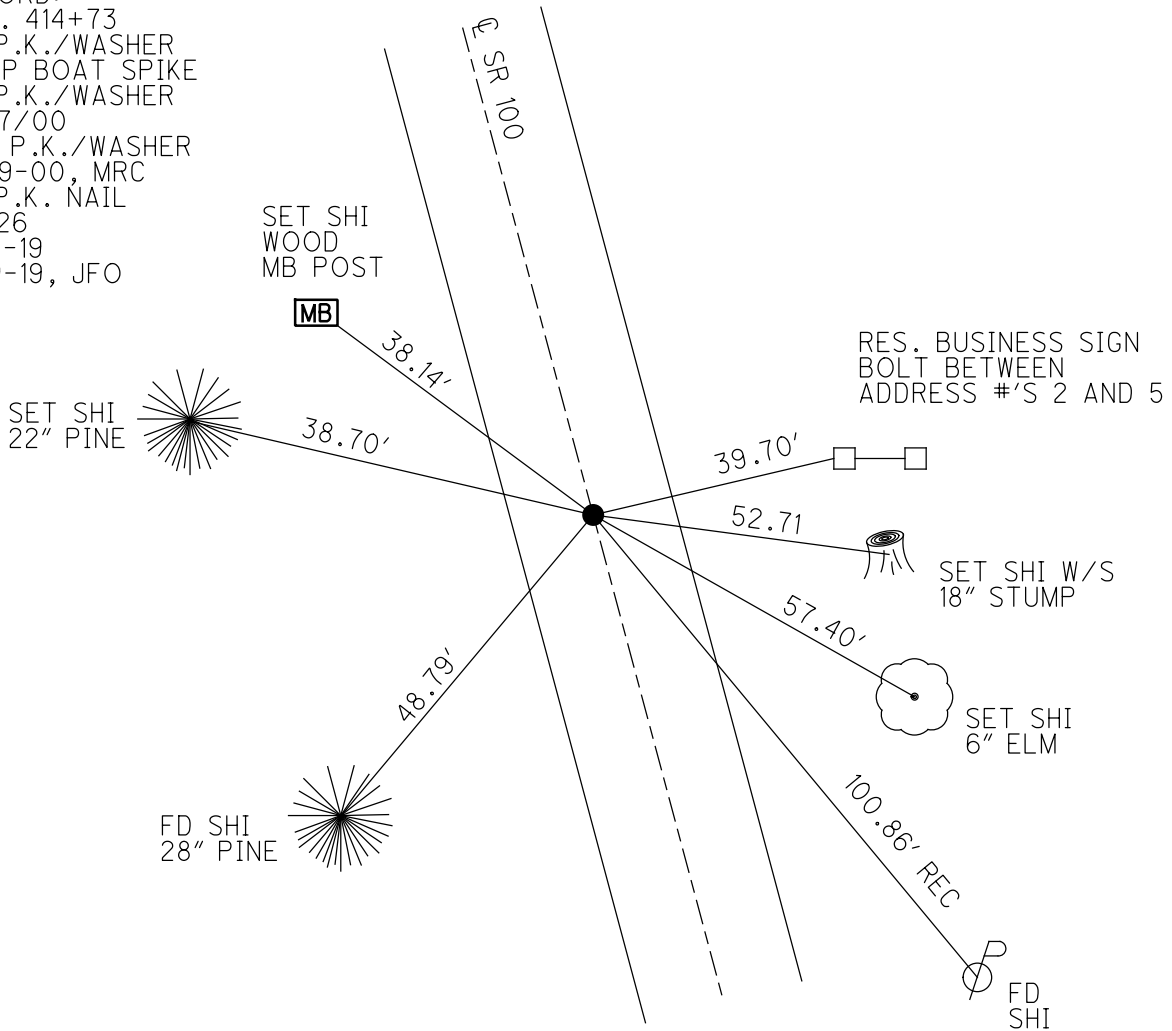
O.D.O.T. DISTRICT 2 SURVEY OFFICE (USE ONLY)

PERSONNEL \_\_\_\_\_ REFERENCE NO. 26 SHEET 34 OF 38  
 NOTES CANTERBURY DATE 7-27-00 ROUTE SR 100  
 H.C. MOSER WEATHER FAIR COUNTY SENECA  
 R.C. CANTERBURY TEMP. 80° TOWNSHIP CLINTON  
 SECTION 32  
 DWG BY NIESE PID 107060 T 2 N R 15 E

TYPE MONUMENT P.K./WASHER  
 ON SURFACE - ~~BELOW~~ ON \_\_\_\_\_  
 OFFSET  $\frac{1}{2}$  PAVEMENT 8" ~~LT~~ : RT  
9.2' TO RT EDGE PAVEMENT  
 STATION: 412+98  
 HORZ.DATUM: NAD83(2011) GEOID: 2012A  
 GRID: NORTHING: 519857.408 EASTING: 1786358.912



RECORD:  
 STA. 414+73  
 FD P.K./WASHER  
 ATOP BOAT SPIKE  
 FD P.K./WASHER  
 7/27/00  
 SET P.K./WASHER  
 10-19-00, MRC  
 FD P.K. NAIL  
 REF26  
 2-14-19  
 8-19-19, JFO



# O.D.O.T. DISTRICT 2 SURVEY OFFICE

PERSONNEL

REFERENCE NO. \_\_\_\_\_

SHEET 29 OF 31

NOTES CANTERBURY

H.C. MOSE

R.C. CANTERBURY

DATE 7-27-00

WEATHER FAIR

TEMP. +80°

ROUTE # 100

COUNTY SENECA

TOWNSHIP CLINTON

SECTION 32

T 2 N 15 E

TYPE MONUMENT P.K + WASHER

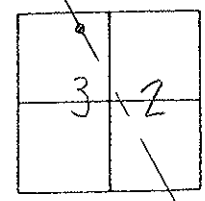
ON SURFACE - ~~BELOW~~ SURFACE

~~LEFT - & PAVT. - RIGHT~~ ON & PAVT.

9.2 TO RT EDGE PAVEMENT

S.L.M. 412 + 98

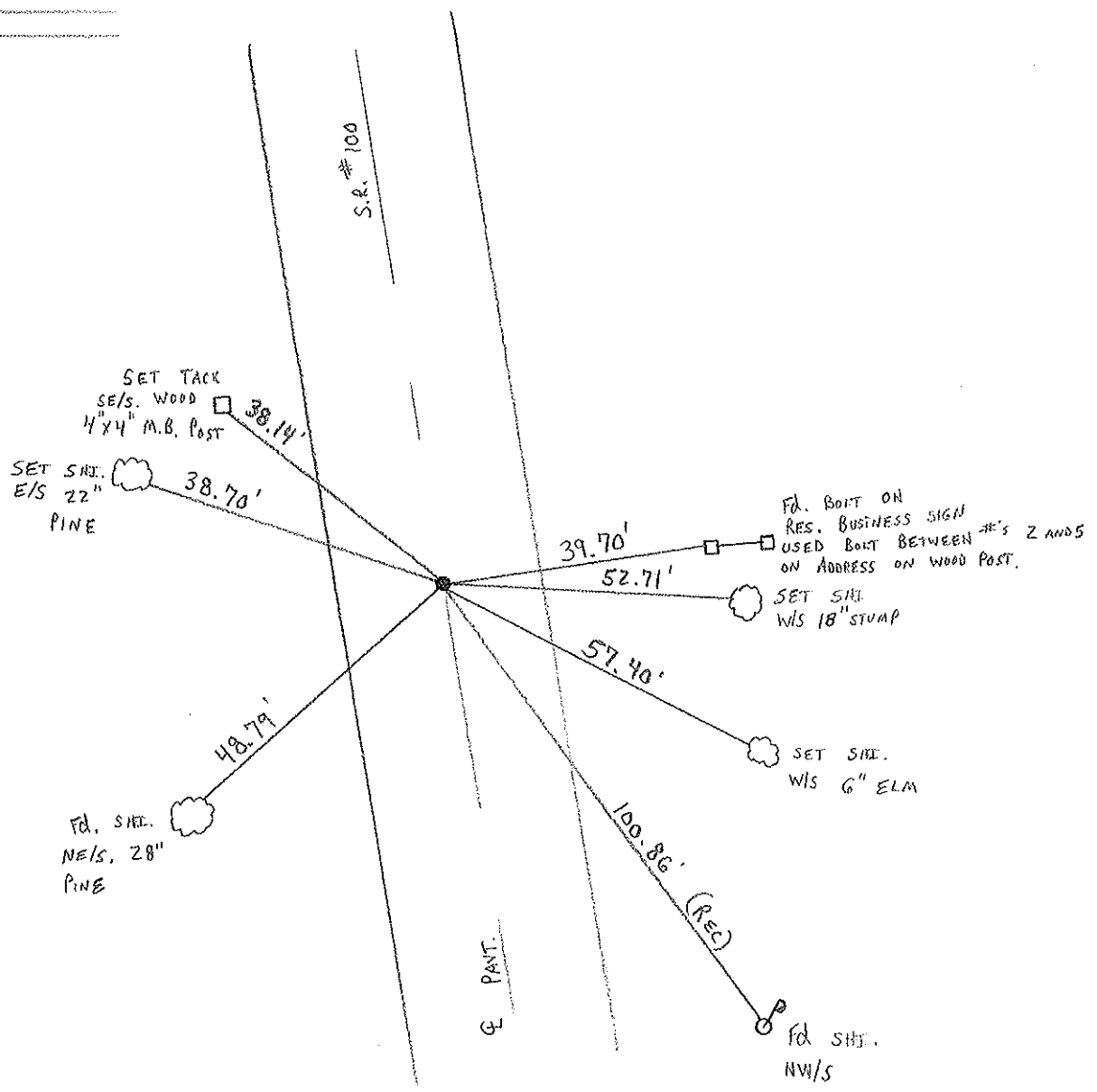
RESET P.K + WASHER  
 10-19-00  
 M.R.C.



RECORD: P.K & WASHER ATOP

BOAT SPIKE

414 + 73 ± SLM



# O.D.O.T. DISTRICT 2 SURVEY OFFICE

PERSONNEL

NOTES Cronin  
 H.C. Ripple  
 R.C. Geyman  
Barbour

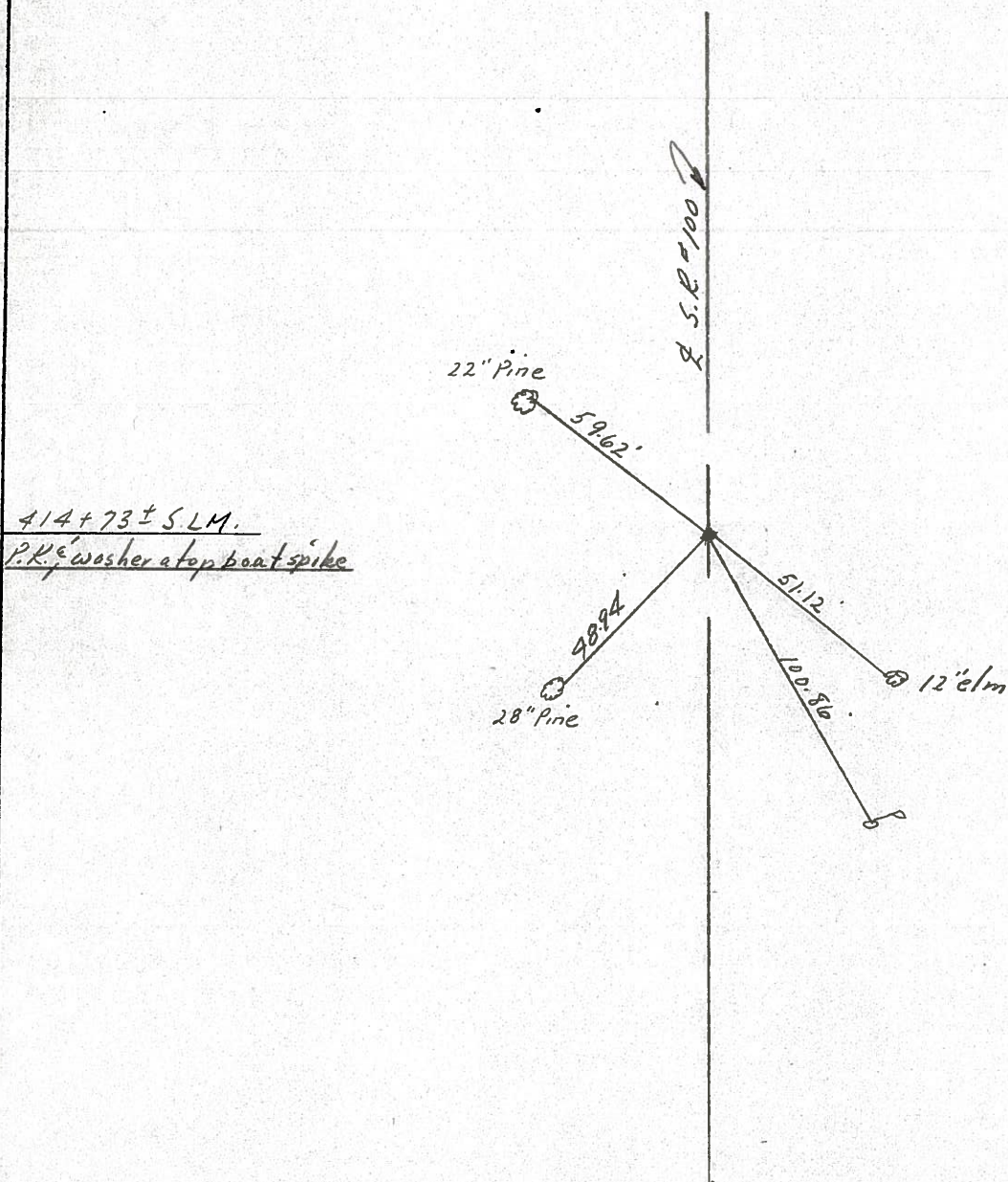
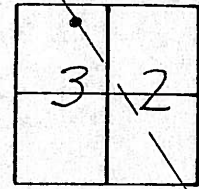
REFERENCE NO. \_\_\_\_\_  
 DRAWN 11/13/86  
 DATE 11/12/86  
 WEATHER sunny  
 TEMP. 32°

SHEET \_\_\_\_\_ OF \_\_\_\_\_

ROUTE #100  
 COUNTY Seneca  
 TOWNSHIP Clinton  
 SECTION 32  
T 2 N R 15 E

TYPE MONUMENT P.K. washer  
 ON SURFACE - BELOW on surface  
 LEFT - & PAV'T. - RIGHT & Pav  
 TO \_\_\_\_\_ EDGE PAVEMENT  
 S.L.M. \_\_\_\_\_

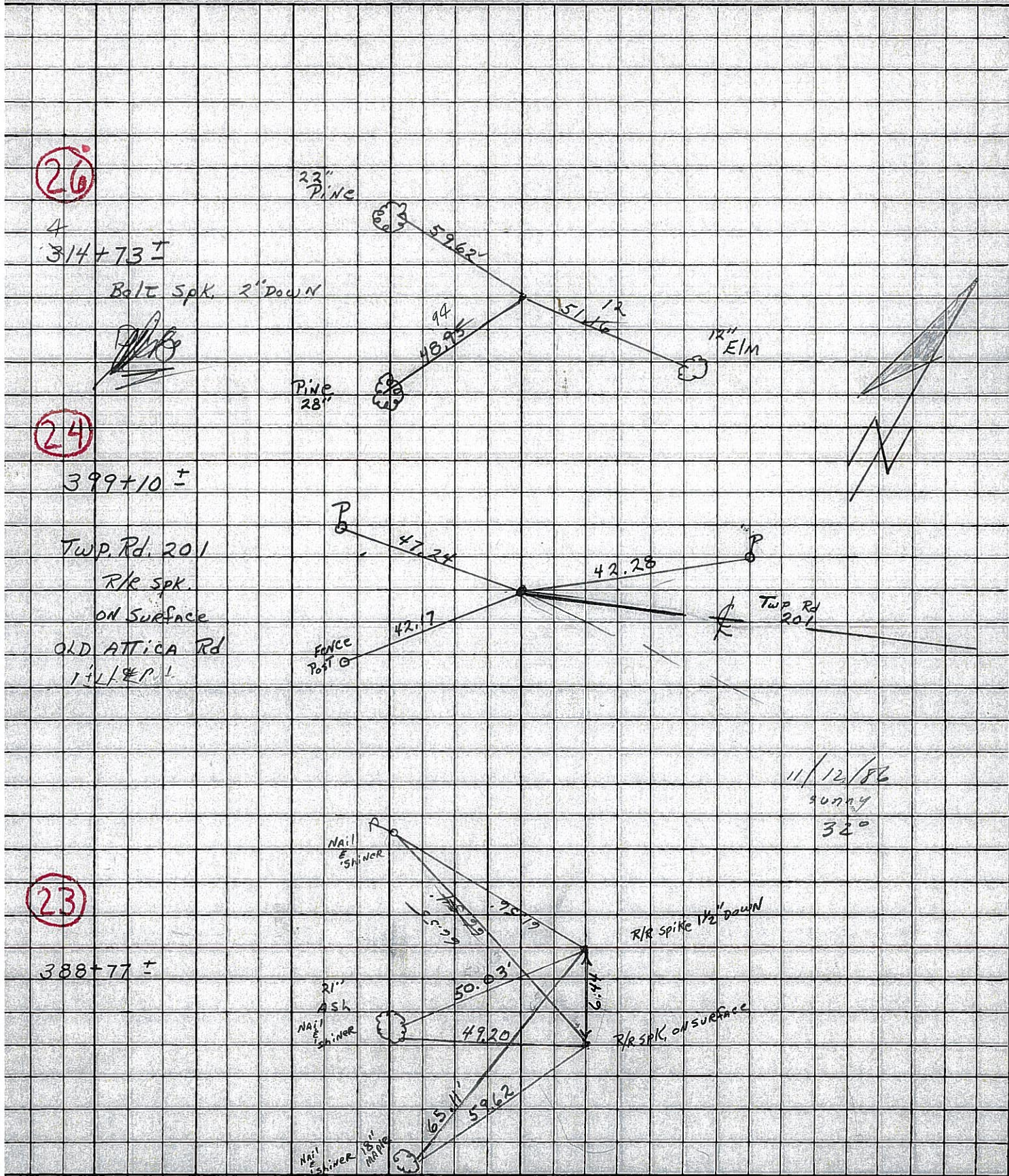
26



PERSONNEL	TITLE	PERSONNEL	TITLE	COUNTY	DATE
RIPPLE				Seneca	6/3/86
BARBOUR				S. R. 100	WEATHER Sunny & Cool
GEYMAN				SEC. By-Pass to Corp. Line	TEMP. 70°

DESCRIPTION: Ties for Control Points

LEFT CENTER LINE RIGHT JOB NO.



PERSONNEL	TITLE	PERSONNEL	TITLE	COUNTY	DATE
Schneider				Seneca	4-29-76
Mosser				S. R. 100	WEATHER Partly Cloud
Barbour				SEC. By-pass to Corp. Line	TEMP. 80°
Potts					

DESCRIPTION Ties for Control Points JOB NO. \_\_\_\_\_

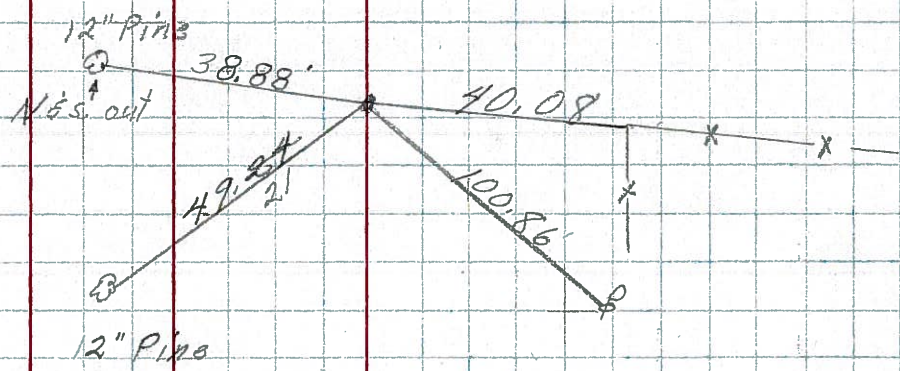
(26)

414+

Bent spk. 1" down

did not find

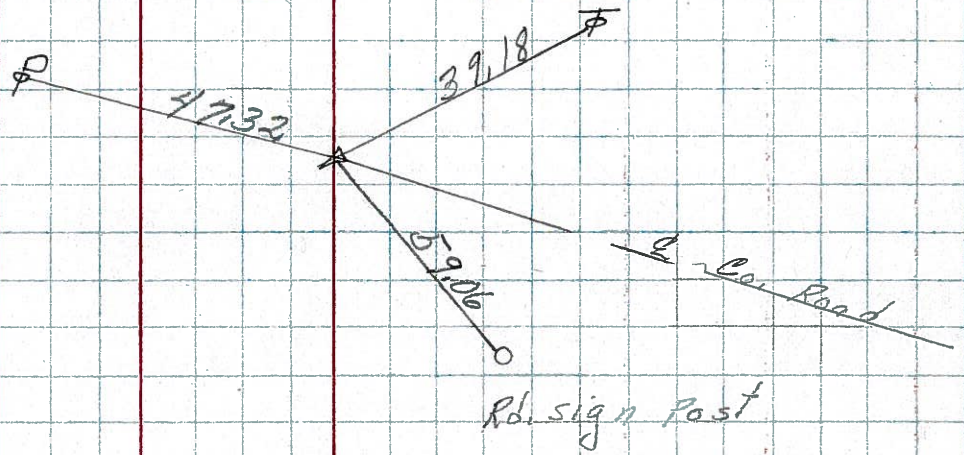
Tiffin & St. Francis Ave.  
Corp.



(24)

399+0

Minor spk.



(23)

388+

R.R. spk.

Nail & shiner 15" Ash

Brass Pin set in cond.

30" Maple

