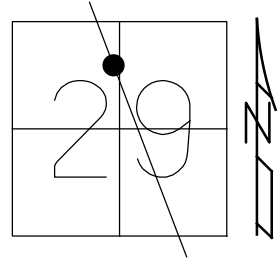


O.D.O.T. DISTRICT 2 SURVEY OFFICE (USE ONLY)

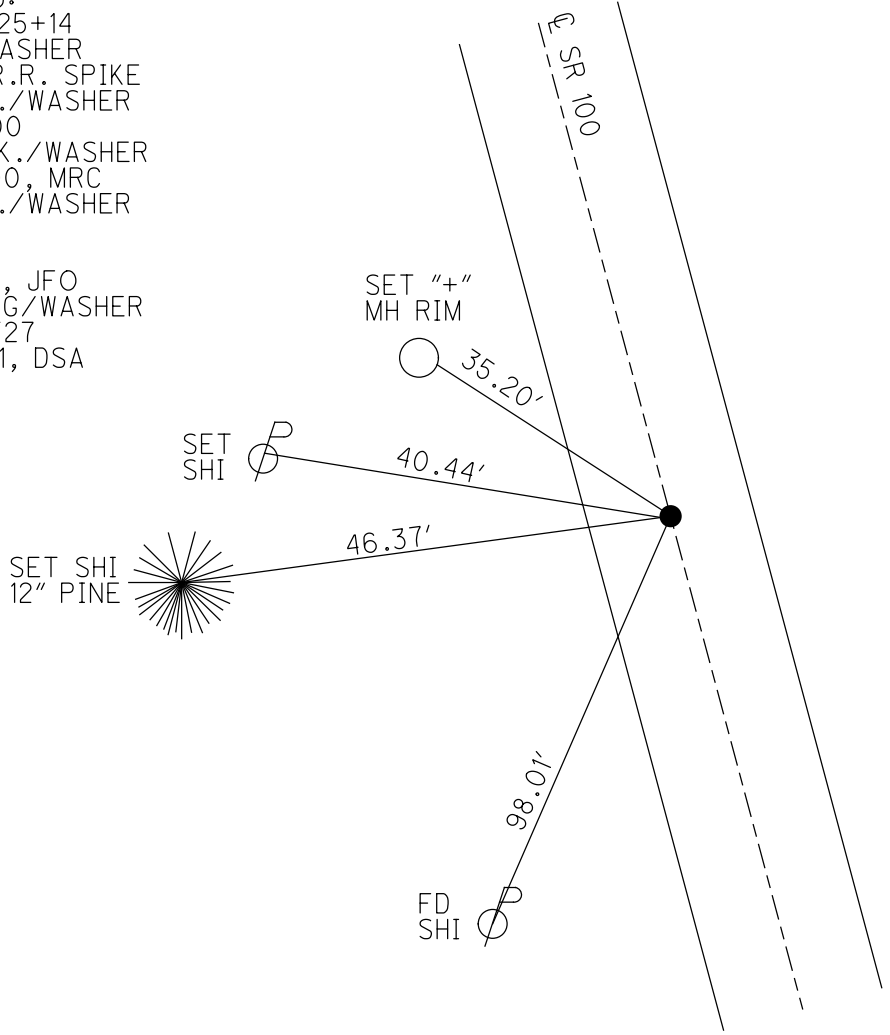
PERSONNEL _____ REFERENCE NO. 27 SHEET 35 OF 46
 NOTES RHOADES DATE 7/9/21 ROUTE SR 100
 H.C. AUBLE WEATHER CLOUDY COUNTY SENECA
 R.C. NIESE TEMP. 69° TOWNSHIP CLINTON
 DWG BY WHITAKER PID 95778 SECTION 29
 T 2 N R 15 E

TYPE MONUMENT MAG/WASHER
 ON SURFACE - ~~BELOW~~ ON _____
 OFFSET \varnothing PAVEMENT 1' LT : ~~RT~~
8.8' TO LT EDGE PAVEMENT
 STATION: 425+14



HORZ.DATUM: NAD83(2011) GEOID: 2012A
 GRID: NORTHING: 520784.140 EASTING: 1785886.003

RECORD:
 STA. 425+14
 P.K./WASHER
 ATOP R.R. SPIKE
 FD P.K./WASHER
 7/27/00
 SET P.K./WASHER
 10-19-00, MRC
 FD P.K./WASHER
 REF27
 2-14-19
 8-19-19, JFO
 SET MAG/WASHER
 NEWREF27
 11/18/21, DSA



O.D.O.T. DISTRICT 2 SURVEY OFFICE (USE ONLY)

PERSONNEL

REFERENCE NO. 27

SHEET 35 OF 38

NOTES CANTERBURY

DATE 7-27-00

ROUTE SR 100

H.C. MOSER

WEATHER FAIR

COUNTY SENECA

R.C. CANTERBURY

TEMP. 80°

TOWNSHIP CLINTON

SECTION 29

DWG BY NIESE PID 107060

T 2 N R 15 E

TYPE MONUMENT P.K./WASHER

ON SURFACE - ~~BELOW~~ ON

OFFSET Q PAVEMENT 1' LT : ~~RT~~

8.8' TO LT EDGE PAVEMENT

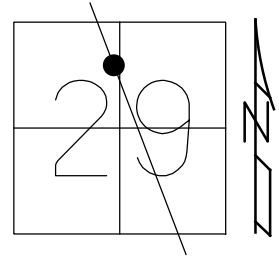
STATION: 425+14

HORZ. DATUM: NAD83(2011)

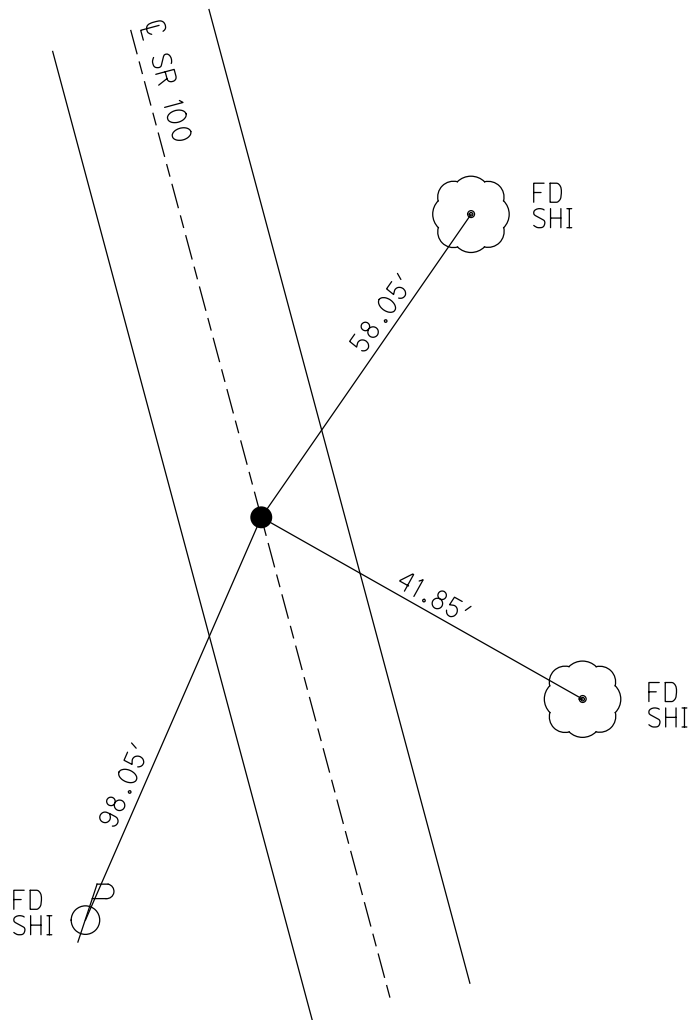
GEOID: 2012A

GRID: NORTHING: 520784.140

EASTING: 1785886.003



RECORD:
 STA. 425+14
 P.K./WASHER
 ATOP R.R. SPIKE
 FD P.K./WASHER
 7/27/00
 SET P.K./WASHER
 10-19-00, MRC
 FD P.K./WASHER
 REF27
 2-14-19
 8-19-19, JFO



O.D.O.T. DISTRICT 2 SURVEY OFFICE

PERSONNEL _____

REFERENCE NO. _____

SHEET 30 OF 31

NOTES CANTERBURY

H.C. MOSEK

R.C. CANTERBURY

DATE 7-27-00

WEATHER FAIR

TEMP. +80°

ROUTE #100

COUNTY SENECA

TOWNSHIP CLINTON

SECTION 29

T 2 N R 15 E

TYPE MONUMENT P.K. + WASHER

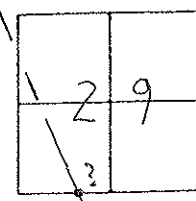
ON SURFACE - ~~BELOW~~ SURFACE

LEFT-~~☉~~ PAV'T. - ~~RIGHT~~ 1.0' LT ☉

8.8' TO LT EDGE PAVEMENT

S.L.M. 425 + 14

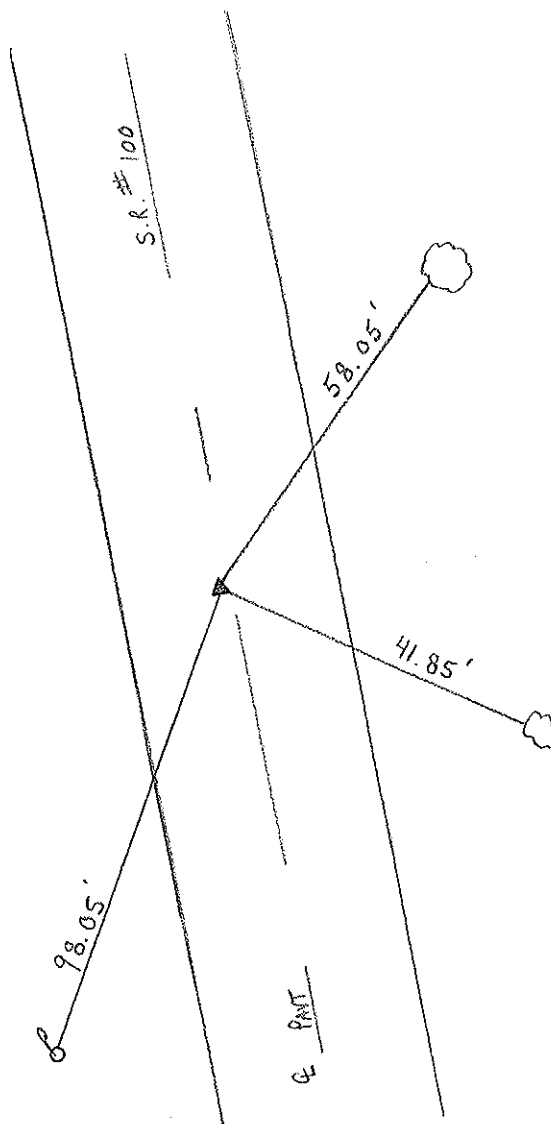
RESET P.K. + WASHER
 10-19-00
 M.R.C.



RECORD: P.K. + WASHER

ATOP R.R. SPIKE

425 + 14 ±



O.D.O.T. DISTRICT 2 SURVEY OFFICE

PERSONNEL

NOTES Cronin
 H.C. Ripple
 R.C. Geyman
Barbour

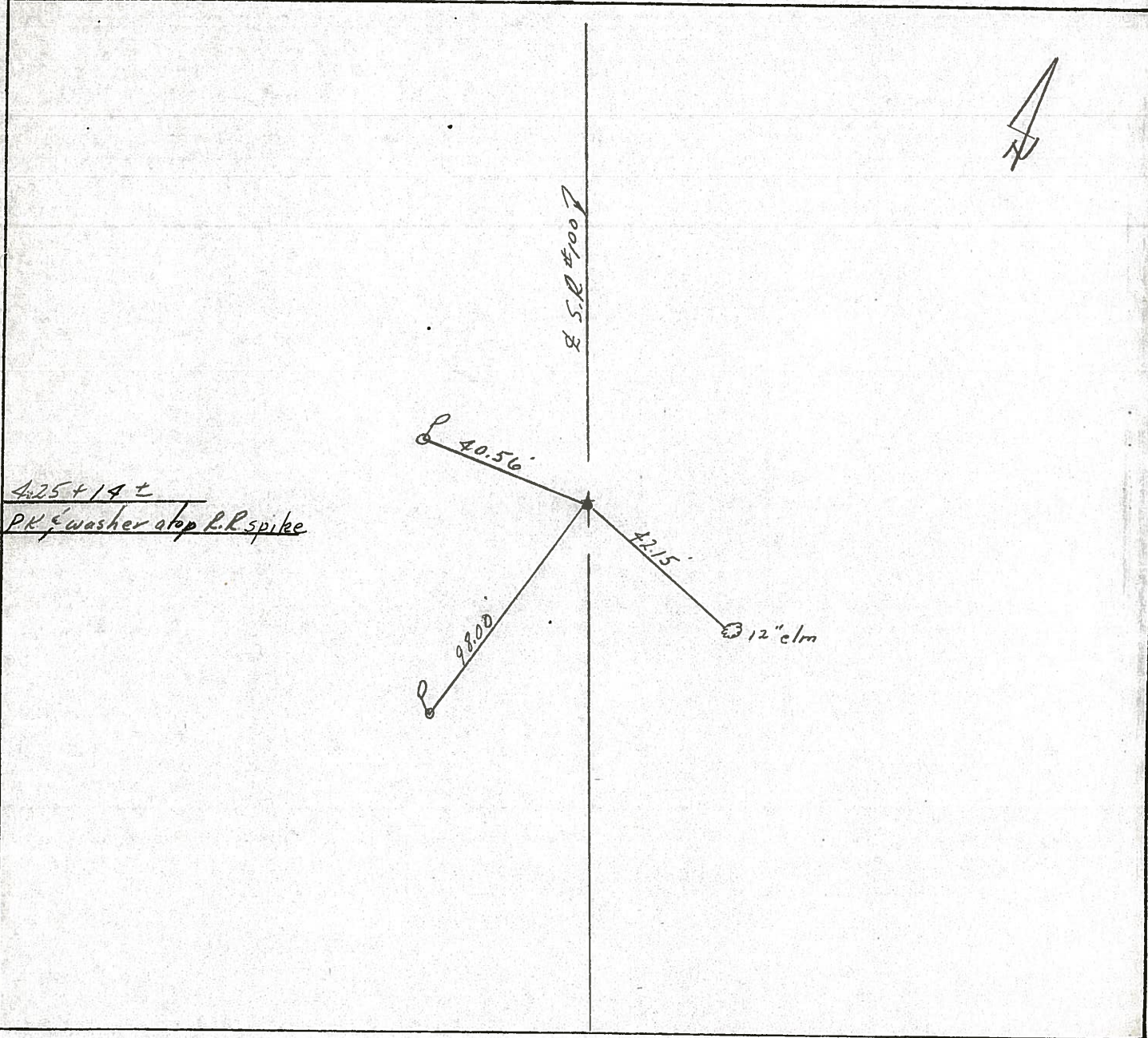
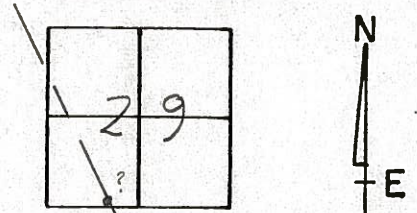
REFERENCE NO. _____
 DRAWN 11/13/86
 DATE 11/12/86
 WEATHER SUNNY
 TEMP. 32°

SHEET _____ OF _____

ROUTE #100
 COUNTY Seneca
 TOWNSHIP Clinton
 SECTION 29
T 2 N R 15 E

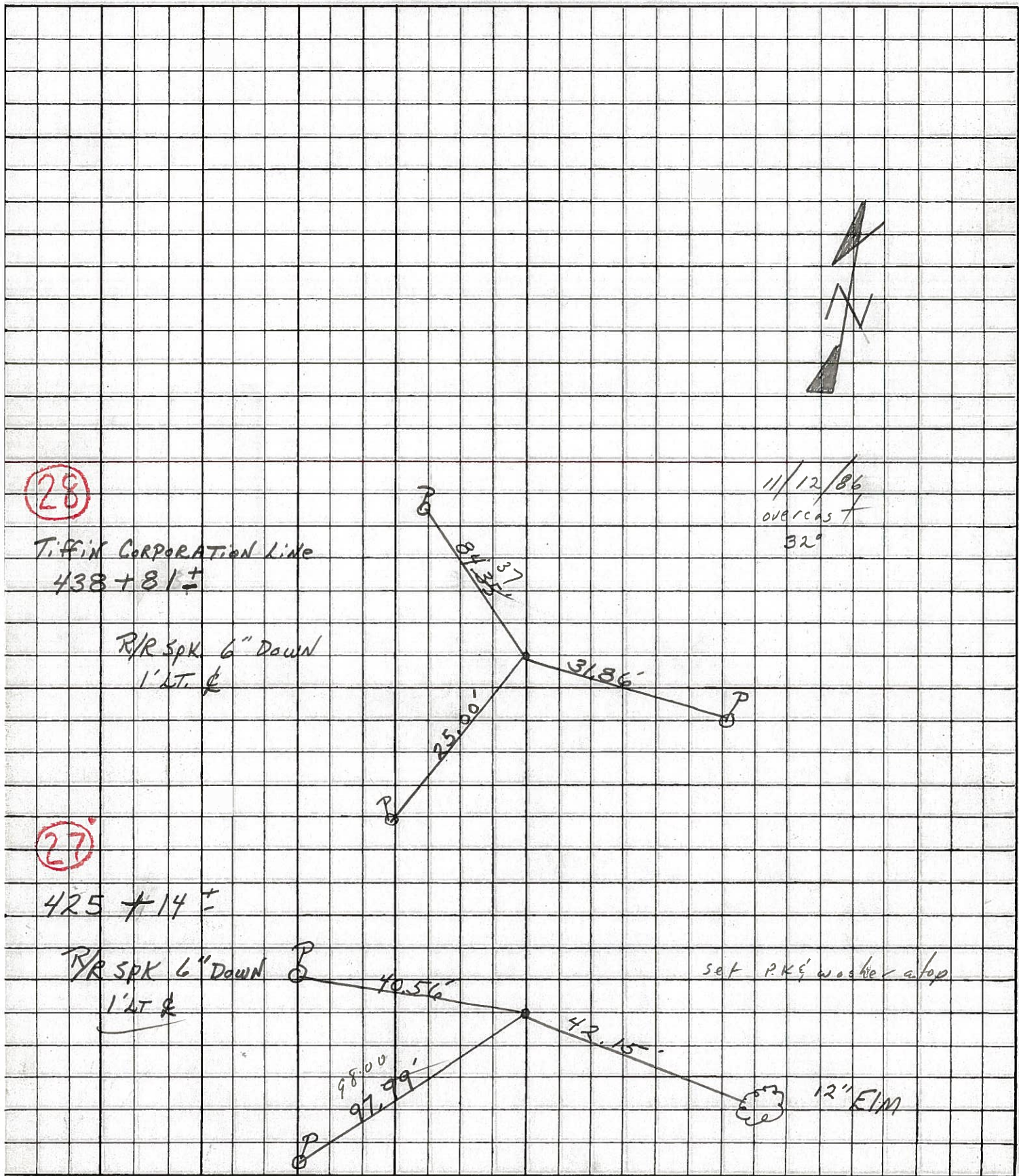
TYPE MONUMENT P.R. washer
 ON SURFACE - BELOW on surface
 LEFT - & PAV'T. - RIGHT 1' ± H.E. Pav't.
 _____ TO _____ EDGE PAVEMENT
 S.L.M. _____

27



PERSONNEL TITLE PERSONNEL TITLE PERSONNEL TITLE PERSONNEL TITLE
 Rippie _____ COUNTY Seneca DATE 6/13/86
 Barbour _____ S. R. 100 WEATHER SUNNY
 Geyman _____ SEC. By-Pass to Corp. Line TEMP. 70°

DESCRIPTION Ties for Central Points JOB NO. _____

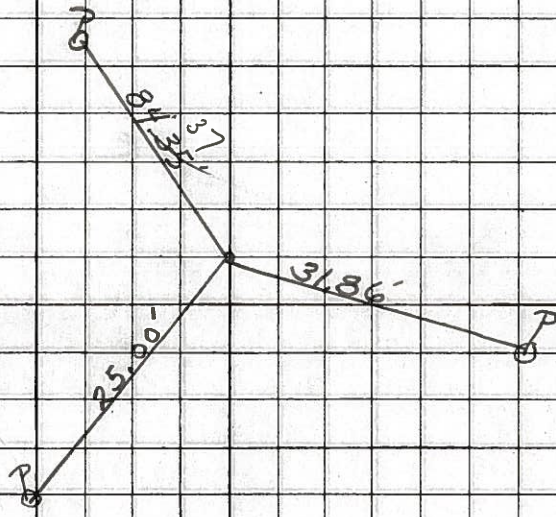


28

Tiffin Corporation Line
438 + 81 ±

R/R Spk 6" Down
1' LT. &

11/12/86
overcast
32°



27

425 + 14 ±

R/R Spk 6" Down
1' LT. &

set P.K's washer atop

