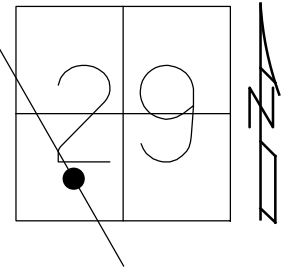


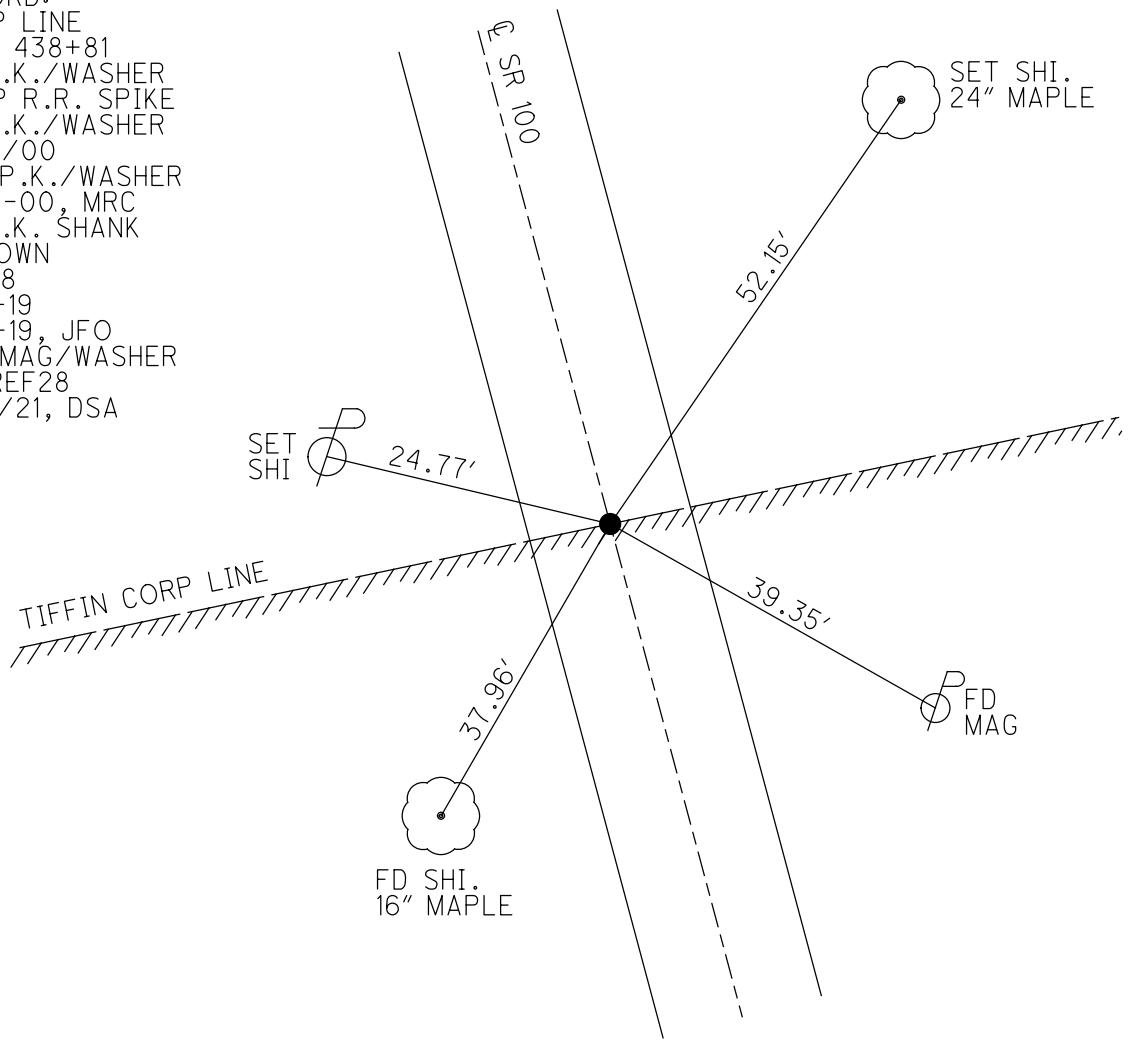
O.D.O.T. DISTRICT 2 SURVEY OFFICE (USE ONLY)

PERSONNEL _____ REFERENCE NO. 28 SHEET 36 OF 46
 NOTES RHOADES DATE 7/9/21 ROUTE SR 100
 H.C. AUBLE WEATHER CLOUDY COUNTY SENECA
 R.C. NIESE TEMP. 69° TOWNSHIP CLINTON
 DWG BY WHITAKER PID 95778 SECTION 29
 T 2 N R 15 E

TYPE MONUMENT MAG/WASHER
 ON SURFACE - ~~BELOW~~ ON _____
 OFFSET \varnothing PAVEMENT 1.0' LT : ~~RT~~
8.0' TO LT EDGE PAVEMENT
 STATION: 438+78
 HORZ.DATUM: NAD83(2011) GEOID: 2012A
 GRID: NORTHING: 522001.761 EASTING: 1785271.487



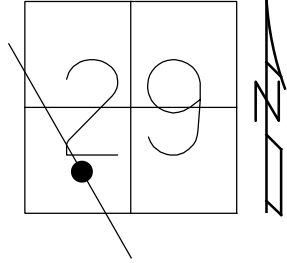
RECORD:
 CORP LINE
 STA. 438+81
 FD P.K./WASHER
 ATOP R.R. SPIKE
 FD P.K./WASHER
 7/27/00
 SET P.K./WASHER
 10-19-00, MRC
 FD P.K. SHANK
 3" DOWN
 REF28
 2-14-19
 8-19-19, JFO
 SET MAG/WASHER
 NEWREF28
 11/18/21, DSA



O.D.O.T. DISTRICT 2 SURVEY OFFICE (USE ONLY)

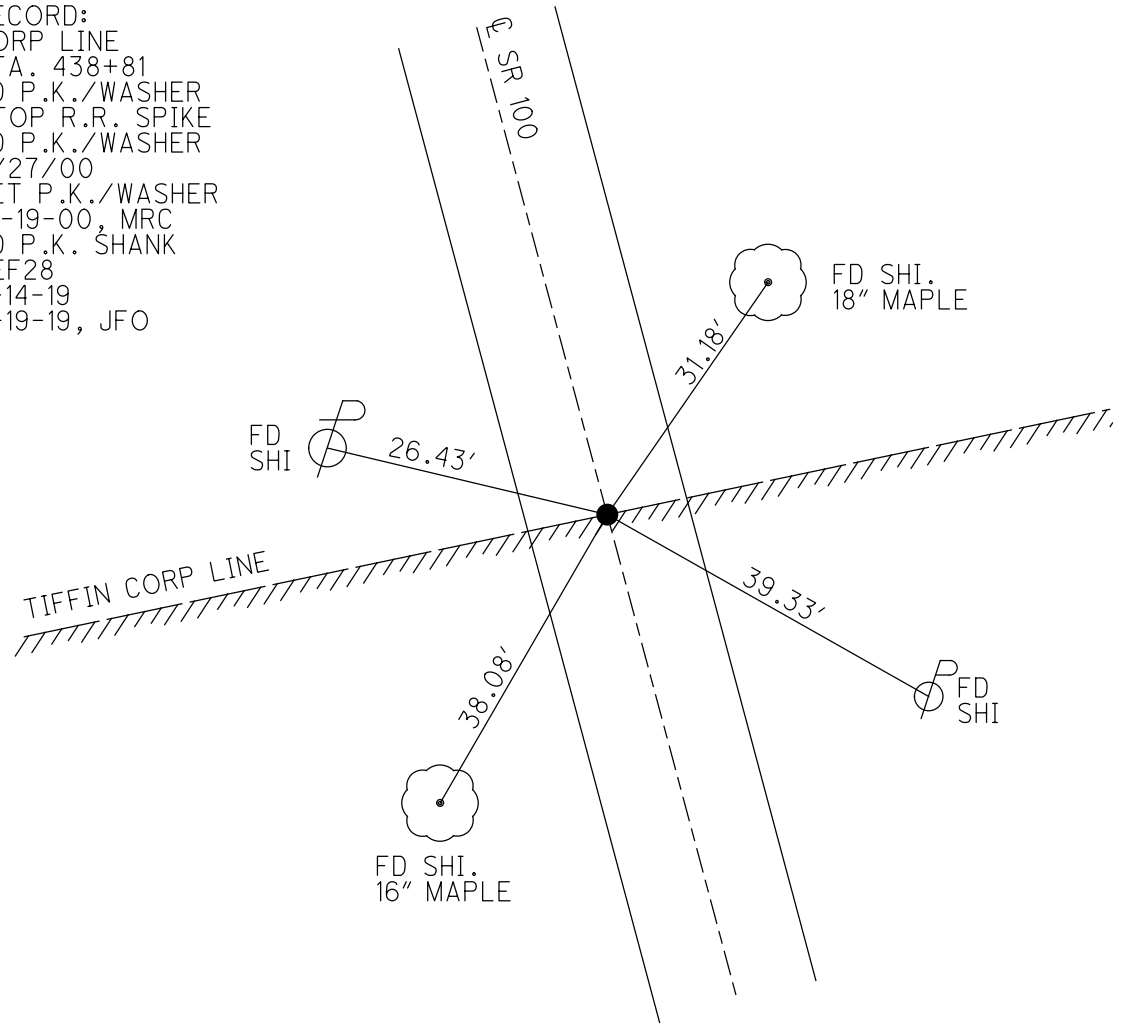
PERSONNEL _____ REFERENCE NO. 28 SHEET 36 OF 38
 NOTES CANTERBURY DATE 7-27-00 ROUTE SR 100
 H.C. MOSER WEATHER FAIR COUNTY SENECA
 R.C. CANTERBURY TEMP. 80° TOWNSHIP CLINTON
 DWG BY NIESE PID 107060 SECTION 29
 T 2 N R 15 E

TYPE MONUMENT P.K./WASHER
 ON SURFACE - ~~BELOW~~ ON _____
 OFFSET \varnothing PAVEMENT 1.0' LT : ~~RT~~
8.0' TO LT EDGE PAVEMENT
 STATION: 438+78



HORZ.DATUM: NAD83(2011) GEOID: 2012A
 GRID: NORTHING: 522001.761 EASTING: 1785271.487

RECORD:
 CORP LINE
 STA. 438+81
 FD P.K./WASHER
 ATOP R.R. SPIKE
 FD P.K./WASHER
 7/27/00
 SET P.K./WASHER
 10-19-00, MRC
 FD P.K. SHANK
 REF28
 2-14-19
 8-19-19, JFO





DGL CONSULTING ENGINEERS, LLC
 3455 BRIARFIELD BLVD, SUITE E
 MAUMEE, OHIO 43537
 419.535.1015

3 POINT REFERENCE TIES

DGL PROJECT NO 18067 ODOT PID 95778

SHEET NO 1 OF 11

CREW TITLE

COUNTY SENECA DATE 12/14/2018

SEA

S.R. STATE ROUTE 100 WEATHER CLOUDY

LL

TOWNSHIP CITY OF TIFFIN TEMP 45°

SECTION TOWN RANGE

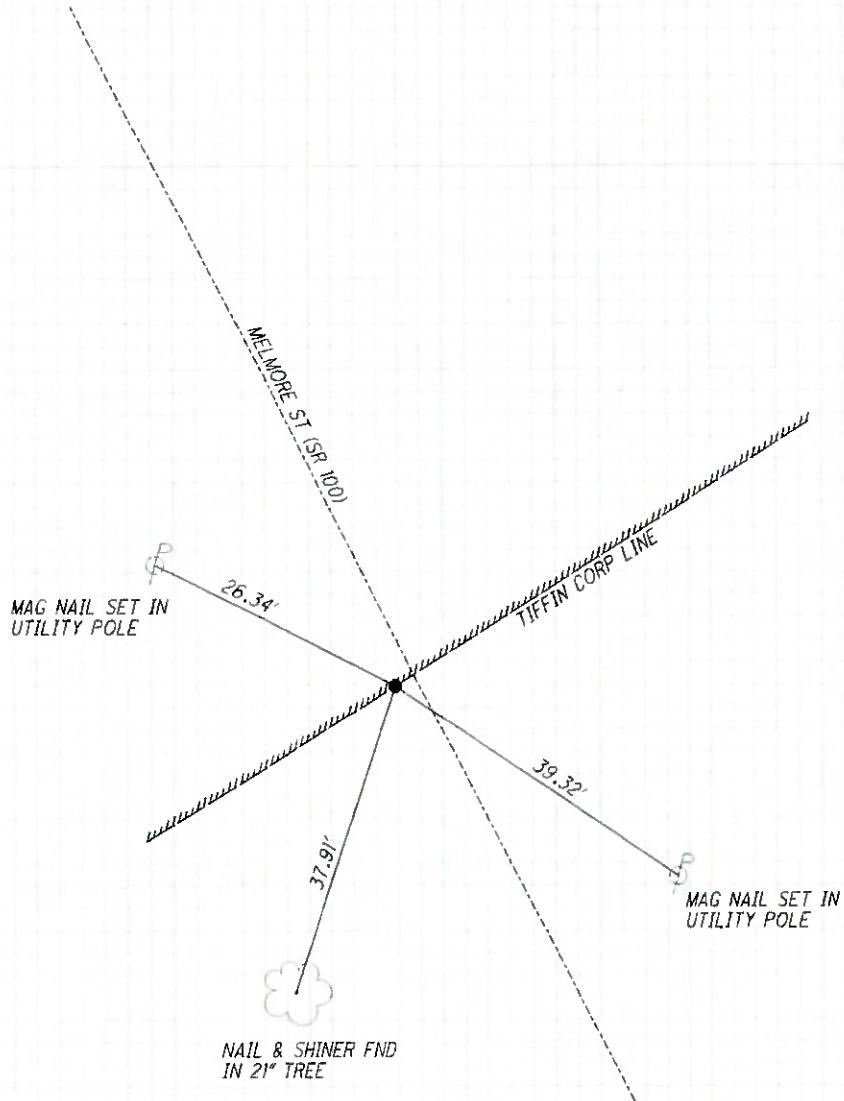


MONUMENT TYPE PK SHANK FND

S.I.M. 438+24.00

DGL SURVEY POINT NO MN12 NORTHING 522001.739 EASTING 1785271.497

28



O.D.O.T. DISTRICT 2 SURVEY OFFICE

PERSONNEL _____

REFERENCE NO. _____

SHEET 31 OF 31

NOTES CANTERBURY

H.C. MOSEK

R.C. CANTERBURY

DATE 7-27-00

WEATHER FAIR

TEMP +80°

ROUTE #100

COUNTY SENECA

TOWNSHIP CLINTON

SECTION 29

T 2 N R 15 E

TYPE MONUMENT P.K. + WASHER

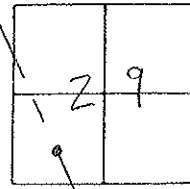
ON SURFACE - BELOW SURFACE

LEFT - Q PAV'T. - RIGHT 1.0' LT Q

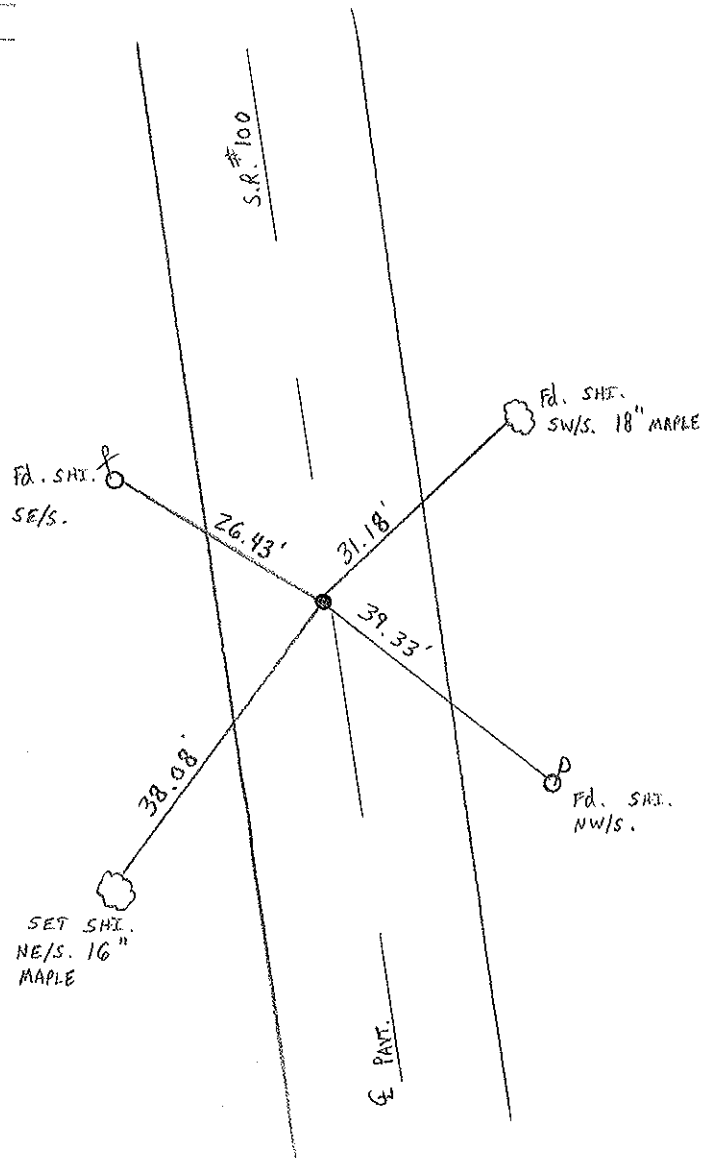
8.0' TO LT EDGE PAVEMENT

S.L.M. 438 + 78

RESET P.K. + WASHER
 10-19-00
 M.R.C.



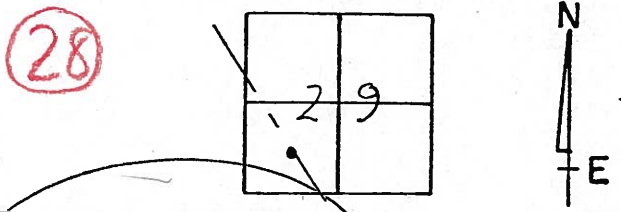
RECORD: P.K. + WASHER ATOP
R.R. SPK., CORP LINE
438 + 81



O.D.O.T. DISTRICT 2 SURVEY OFFICE

PERSONNEL	REFERENCE NO. _____	SHEET _____ OF _____
NOTES <u>Cronin</u>	DRAWN <u>11/13/86</u>	ROUTE <u>#100</u>
H.C. <u>Ripple</u>	DATE <u>11/12/86</u>	COUNTY <u>Seneca</u>
R.C. <u>Geyman</u>	WEATHER <u>sunny</u>	TOWNSHIP <u>Clinton</u>
<u>Barbour</u>	TEMP. <u>32°</u>	SECTION <u>29</u>
		T <u>2</u> N R <u>15</u> E

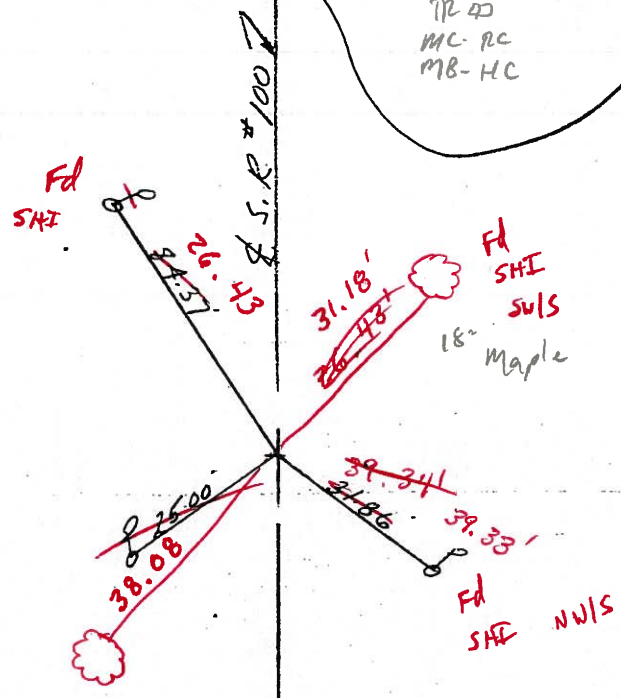
TYPE MONUMENT P.K. & Washer
 ON SURFACE - BELOW on surface
 LEFT - & PAV'T. - RIGHT 1' Lt. & Pavt.
 TO _____ EDGE PAVEMENT
 S.L.M. _____



Fd. P.K. + WASHER @ SURFACE
1.0' LT & PAVT
8.0' TO LT EOT
STA 438 + 78.03

Reset P.K. & Washer
 10-19-03
 Clear, 70°
 TP 40
 MC-RC
 MB-HC

438+81
~~434+81~~ S.L.M.
 P.K. & Washer atop RR spikes
 Corporation Line



O.D.O.T. DISTRICT 2 SURVEY OFFICE

PERSONNEL _____

REFERENCE NO. _____

SHEET _____ OF _____

NOTES Cronin

DRAWN 11/13/86

H.C. Ripple

DATE 11/12/86

R.C. Geyman

WEATHER sunny

Barbour

TEMP. 32°

ROUTE #100

COUNTY Seneca

TOWNSHIP Clinton

SECTION 29

T 2 N R 15 E

TYPE MONUMENT P.K. & washer

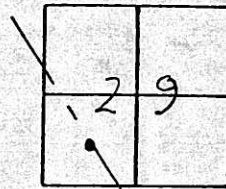
ON SURFACE - BELOW on surface

LEFT - ℄ PAV'T. - RIGHT int. & Pavt.

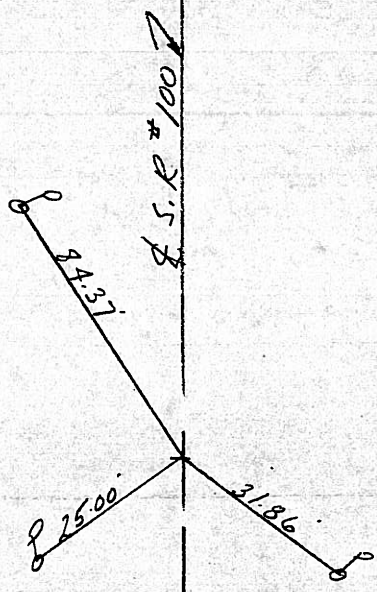
TO _____ EDGE PAVEMENT

S.L.M. _____

28



438+81
~~434+81~~ S.L.M.
P.K. & washer atop R.R. spikes
Corporation line



O.D.O.T. DISTRICT 2 SURVEY OFFICE

PERSONNEL

REFERENCE NO. _____

SHEET _____ OF _____

NOTES Cronin

DRAWN 11/13/86

H.C. Ripple

DATE 11/12/86

ROUTE #100

R.C. Geyman

WEATHER sunny

COUNTY Seneca

Barbour

TEMP. 32°

TOWNSHIP Clinton

SECTION 29

T 2 N R 15 E

TYPE MONUMENT P.K. & washer

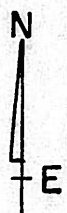
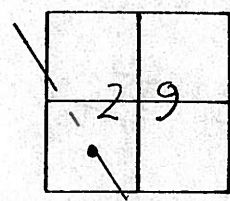
ON SURFACE - BELOW on surface

LEFT - & PAV'T. - RIGHT l. & Pav't.

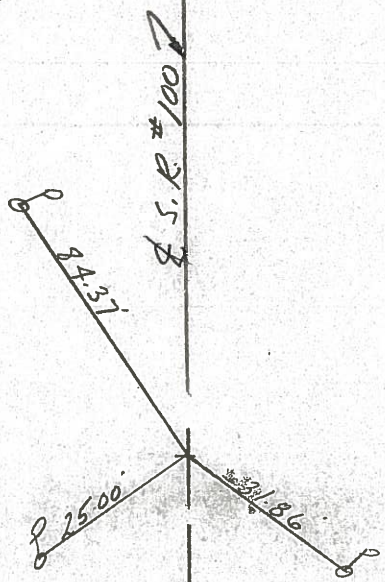
TO _____ EDGE PAVEMENT

S.L.M. _____

(28)



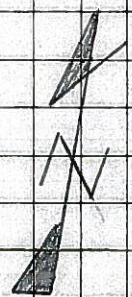
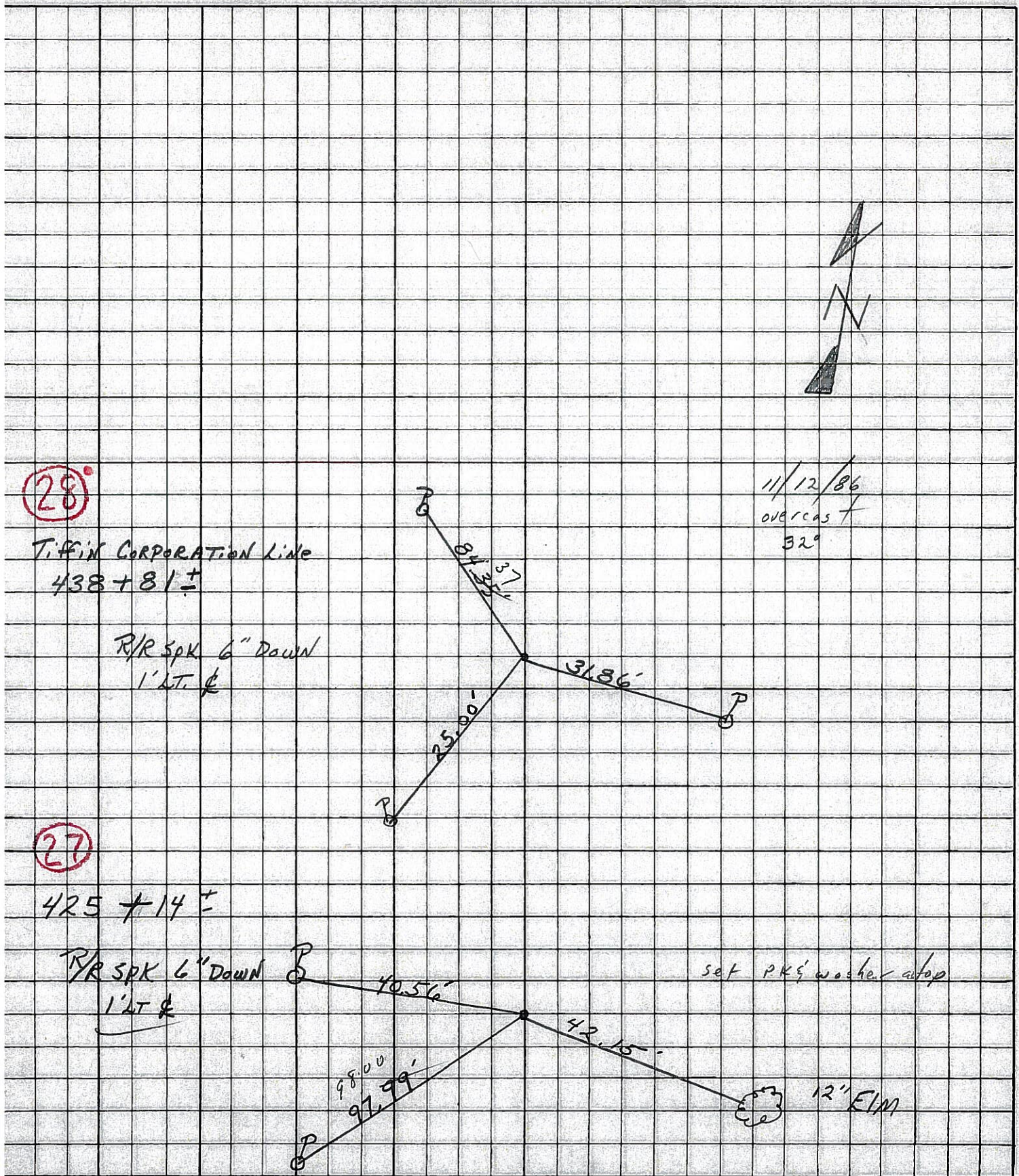
434+81 ± S.L.M.
P.K. & washer atop RR spike
Corporation line



PERSONNEL	TITLE	PERSONNEL	TITLE	COUNTY	DATE
<u>RIPPLE</u>				<u>Seale CA</u>	<u>6/3/86</u>
<u>BARBOUR</u>				S. R. <u>100</u>	WEATHER <u>SUNNY</u>
<u>SEYMAN</u>				SEC. <u>By-Pass to Corp. Line</u>	TEMP. <u>70°</u>

DESCRIPTION Ties for Control Points JOB NO. _____

LEFT CENTER LINE RIGHT



11/12/86
OVERCAST
32°

(28)

TIFFIN CORPORATION Line
438 + 81 ±

R/R SPK 6" DOWN
1' LT. &

(27)

425 + 14 ±

R/R SPK 6" DOWN
1' LT. &

set PK's washer atop

12" ELM