

O.D.O.T. DISTRICT 2 SURVEY OFFICE (USE ONLY)

PERSONNEL

REFERENCE NO. 30

SHEET 39 OF 46

NOTES RHOADES

DATE 7/9/21

ROUTE SR 100

H.C. AUBLE

WEATHER CLOUDY

COUNTY SENECA

R.C. NIESE

TEMP. 69°

TOWNSHIP CLINTON

SECTION 29

DWG BY WHITAKER

PID 95778

T 2 N R 15 E

TYPE MONUMENT MAG/WASHER

ON SURFACE - ~~BELOW~~ ON

OFFSET 0 PAVEMENT LT : RT

- TO - EDGE PAVEMENT

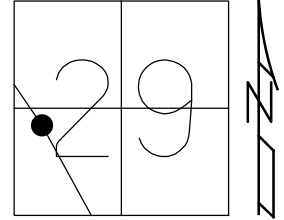
STATION: 453+80.81

HORZ.DATUM: NAD83(2011)

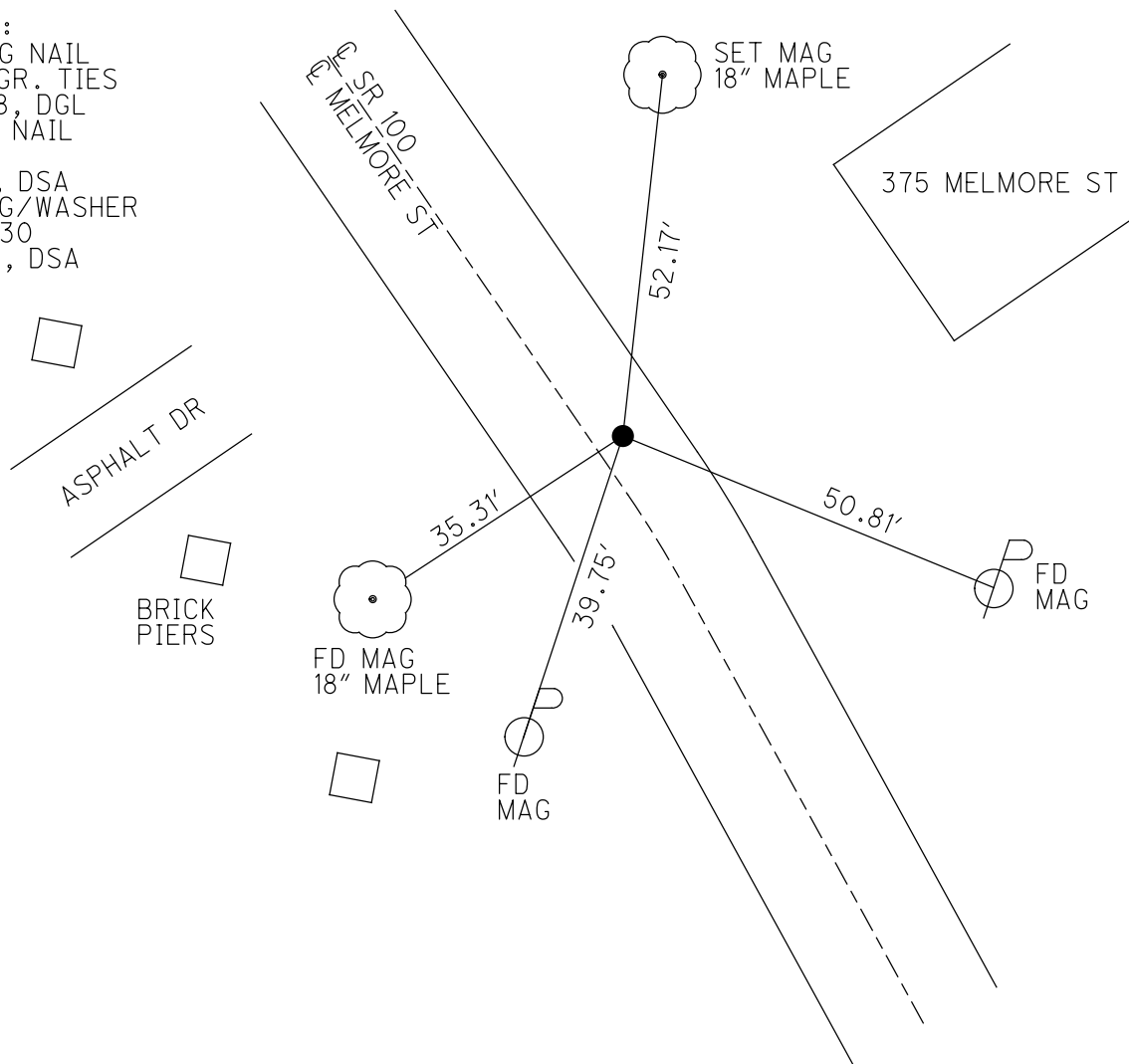
GEOID: 2012A

GRID: NORTHING: 523392.765

EASTING: 1784572.121



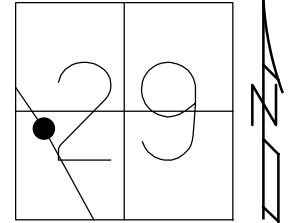
RECORD:
 SET MAG NAIL
 DGL ENGR. TIES
 12/14/18, DGL
 FD MAG NAIL
 REF30
 7/9/21, DSA
 SET MAG/WASHER
 NEWREF30
 11/18/21, DSA



O.D.O.T. DISTRICT 2 SURVEY OFFICE (USE ONLY)

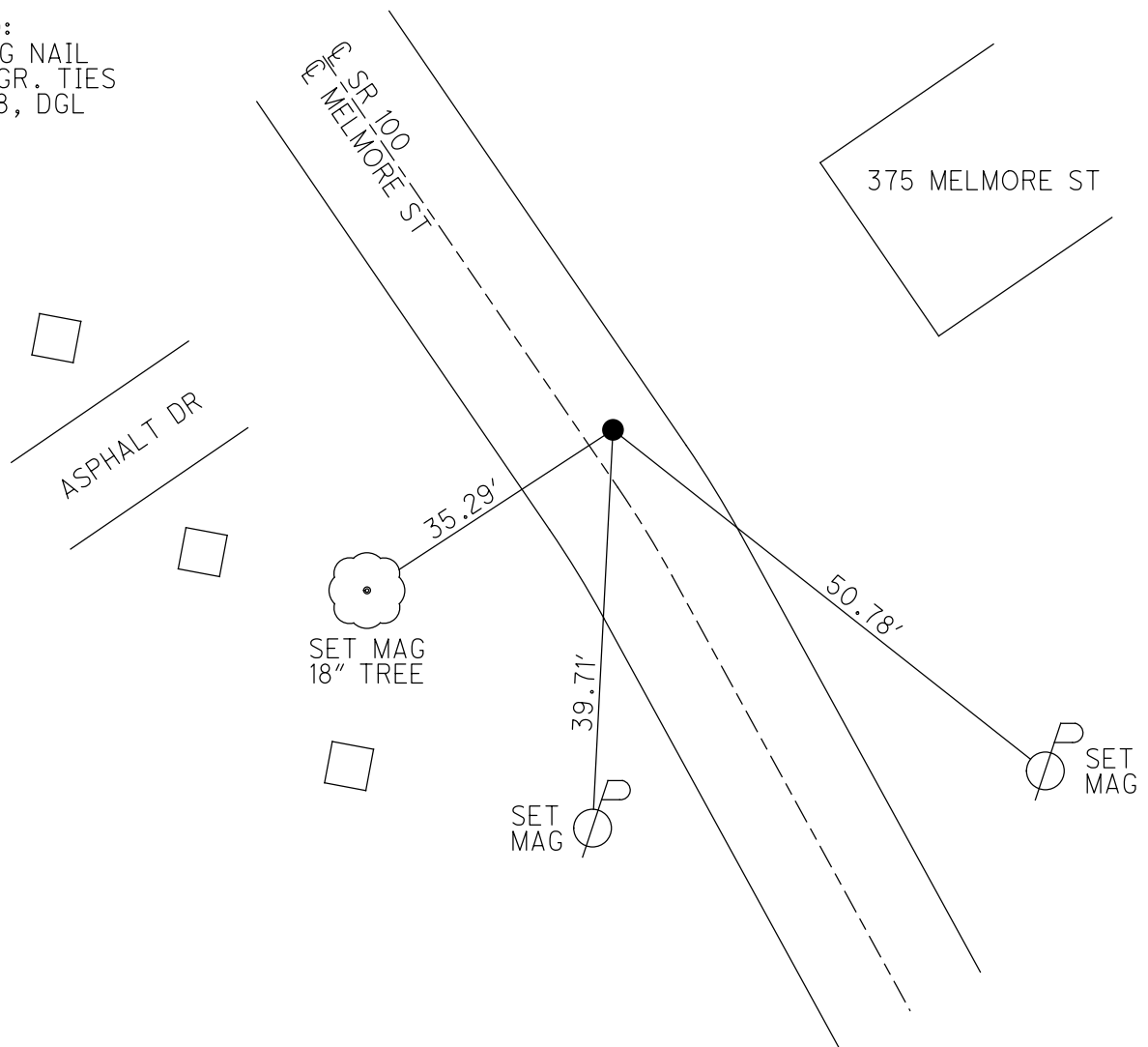
PERSONNEL _____ REFERENCE NO. 30 SHEET 38 OF 45
 NOTES SEA DATE 12/14/18 ROUTE SR 100
 H.C. SEA WEATHER CLOUDY COUNTY SENECA
 R.C. LL TEMP. 45° TOWNSHIP CLINTON
 DWG BY NIESE PID 95778 SECTION 29
 T 2 N R 15 E

TYPE MONUMENT MAG NAIL
 ON SURFACE - ~~BELOW~~ ON
 OFFSET Q PAVEMENT _____ LT : RT
 - TO - EDGE PAVEMENT
 STATION: 453+80.81



HORZ. DATUM: _____ GEOID: _____
 GRID: NORTHING: 523392.605 EASTING: 1784572.117

RECORD:
 SET MAG NAIL
 DGL ENGR. TIES
 12/14/18, DGL





DGL CONSULTING ENGINEERS, LLC
 3455 BRIARFIELD BLVD, SUITE E
 MAUMEE, OHIO 43537
 419.535.1015

3 POINT REFERENCE TIES

DGL PROJECT NO 18067 ODOT PID 95778

SHEET NO 3 OF 11

CREW TITLE

COUNTY SENECA DATE 12/14/2018

SEA

S.R. STATE ROUTE 100 WEATHER CLOUDY

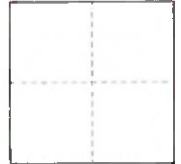
LL

TOWNSHIP CITY OF TIFFIN TEMP 45°

MONUMENT TYPE MAG NAIL SET

S.L.M. 453+80.81

SECTION TOWN RANGE



DGL SURVEY POINT NO NORTHING 523392.605 EASTING 1784572.117

30

