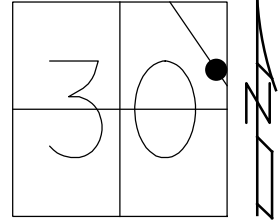


O.D.O.T. DISTRICT 2 SURVEY OFFICE (USE ONLY)

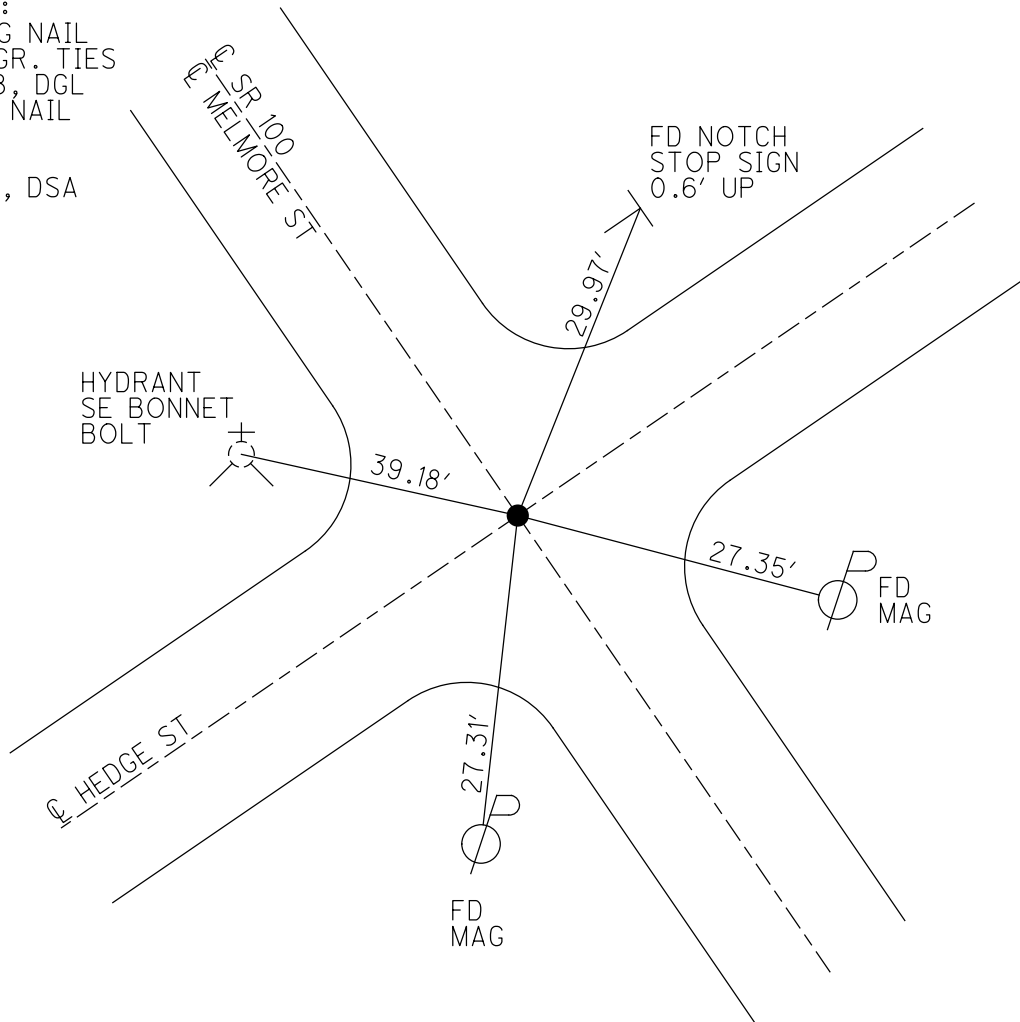
PERSONNEL \_\_\_\_\_ REFERENCE NO. 31 SHEET 40 OF 46  
 NOTES RHOADES DATE 7/9/21 ROUTE SR 100  
 H.C. AUBLE WEATHER CLOUDY COUNTY SENECA  
 R.C. NIESE TEMP. 69° TOWNSHIP CLINTON  
 DWG BY WHITAKER PID 95778 SECTION 29  
 T 2 N R 15 E

TYPE MONUMENT MAG NAIL  
 ON SURFACE - ~~BELOW~~ ON  
 OFFSET  $\varnothing$  PAVEMENT ON LT : RT  
- TO - EDGE PAVEMENT  
 STATION: 470+64.37

HORZ.DATUM: NAD83(2011) GEOID: 2012A  
 GRID: NORTHING: 524738.251 EASTING: 1783560.384



RECORD:  
 SET MAG NAIL  
 DGL ENGR. TIES  
 12/14/18, DGL  
 FD MAG NAIL  
 REF31  
 7/9/21  
 11/18/21, DSA



O.D.O.T. DISTRICT 2 SURVEY OFFICE (USE ONLY)

PERSONNEL \_\_\_\_\_

REFERENCE NO. 31

SHEET 39 OF 45

NOTES SEA

DATE 12/14/18

ROUTE SR 100

H.C. SEA

WEATHER CLOUDY

COUNTY SENECA

R.C. LL

TEMP. 45°

TOWNSHIP CLINTON

DWG BY NIESE PID 95778

SECTION 29

T 2 N R 15 E

TYPE MONUMENT MAG NAIL

ON SURFACE - ~~BELOW~~ ON

OFFSET Q PAVEMENT ON LT : RT

- TO - EDGE PAVEMENT

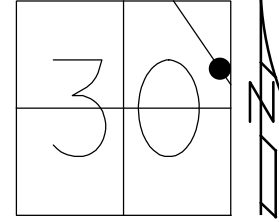
STATION: 470+64.37

HORZ.DATUM: \_\_\_\_\_

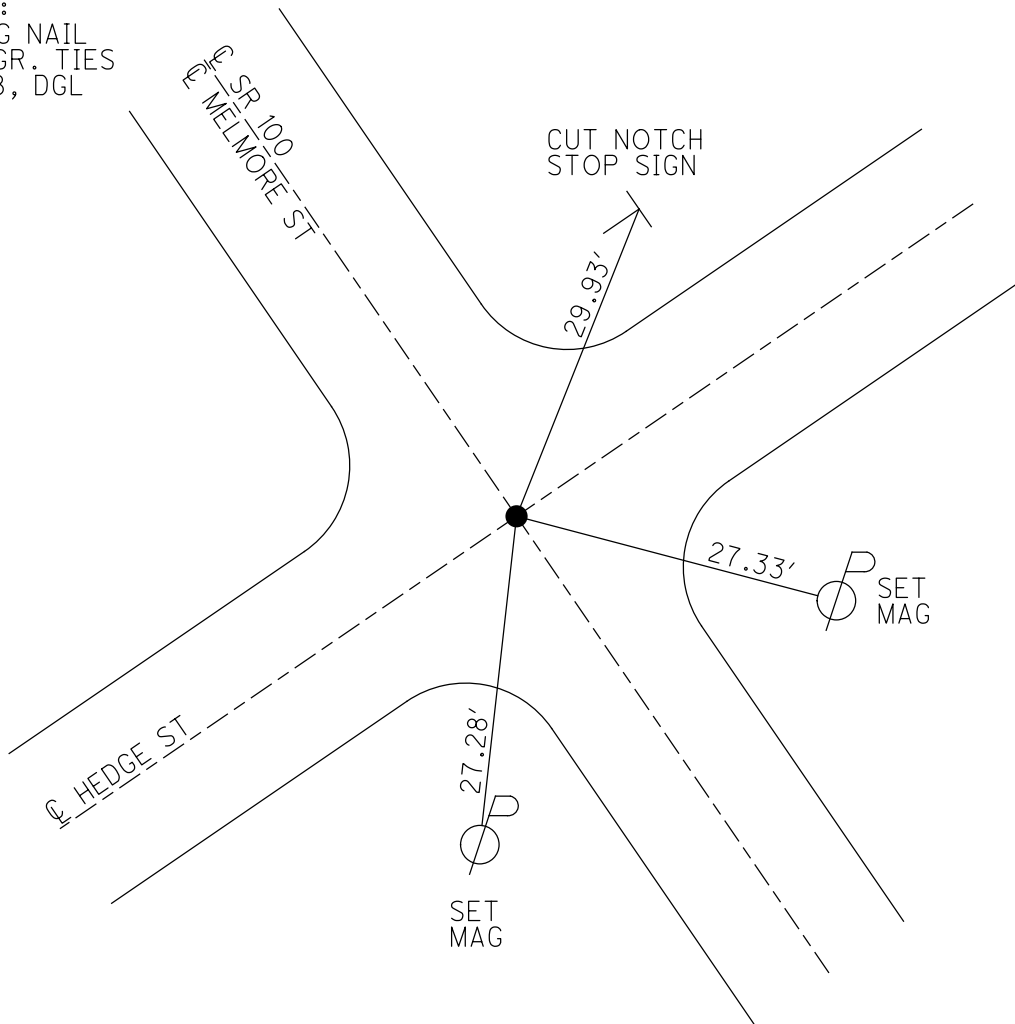
GEOID: \_\_\_\_\_

GRID: NORTHING: 524738.251

EASTING: 1783560.384



RECORD:  
SET MAG NAIL  
DGL ENGR. TIES  
12/14/18, DGL





DGL CONSULTING ENGINEERS, LLC  
 3455 BRIARFIELD BLVD, SUITE E  
 MAUMEE, OHIO 43537  
 419.535.1015

3 POINT REFERENCE TIES

DGL PROJECT NO 18067 ODOT PID 95778

SHEET NO 4 OF 11

CREW \_\_\_\_\_ TITLE \_\_\_\_\_

COUNTY SENECA DATE 12/14/2018

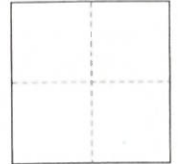
SEA \_\_\_\_\_

S.R. STATE ROUTE 100 WEATHER CLOUDY

LL \_\_\_\_\_

TOWNSHIP CITY OF TIFFIN TEMP 45°

SECTION \_\_\_\_\_ TOWN \_\_\_\_\_ RANGE \_\_\_\_\_



MONUMENT TYPE MAG NAIL SET

S.L.M. 470+64.37

DGL SURVEY POINT NO \_\_\_\_\_ NORTHING 524738.251 EASTING 1783560.384

31

