

O.D.O.T. DISTRICT 2 SURVEY OFFICE (USE ONLY)

PERSONNEL _____

REFERENCE NO. 32

SHEET 40 OF 45

NOTES SEA

DATE 12/14/18

ROUTE SR 100

H.C. SEA

WEATHER CLOUDY

COUNTY SENECA

R.C. LL

TEMP. 45°

TOWNSHIP CLINTON

DWG BY NIESE PID 95778

SECTION 19

T 2 N R 15 E

TYPE MONUMENT MONBOX W/ STONE

ON SURFACE - ~~BELOW~~ ON

OFFSET \odot PAVEMENT _____ LT : RT

- TO - EDGE PAVEMENT

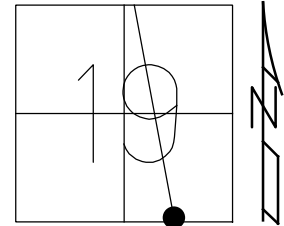
STATION: 491+56.80

HORIZ.DATUM: _____

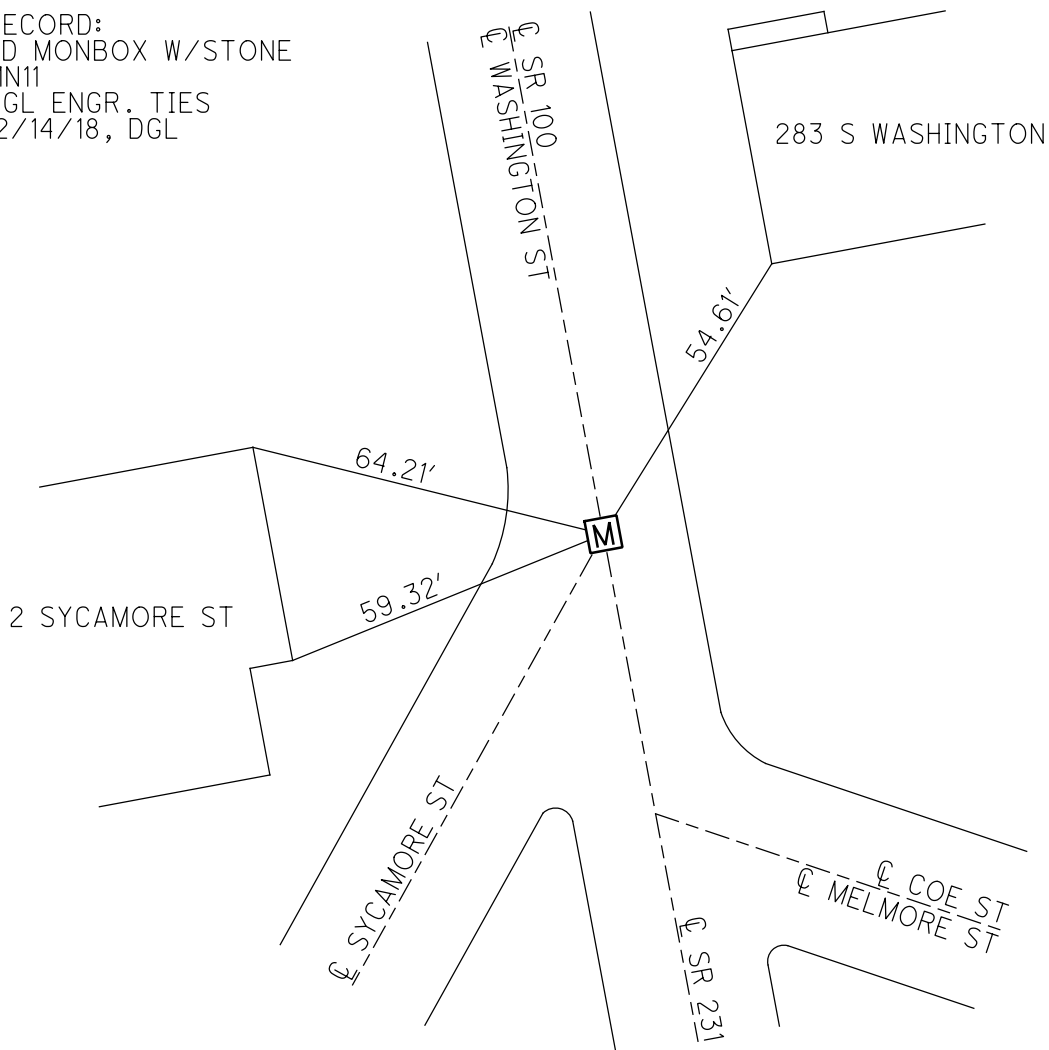
GEOID: _____

GRID: NORTHING: 526408.749

EASTING: 1782286.472



RECORD:
FD MONBOX W/STONE
MN11
DGL ENGR. TIES
12/14/18, DGL





DGL CONSULTING ENGINEERS, LLC
 3455 BRIARFIELD BLVD, SUITE E
 MAUMEE, OHIO 43537
 419.535.1015

3 POINT REFERENCE TIES

DGL PROJECT NO. 18067 ODOT PID 95778

SHEET NO 6 OF 11

CREW TITLE

COUNTY SENECA DATE 12/14/2018

SEA

S.R. STATE ROUTE 100 WEATHER CLOUDY

LL

TOWNSHIP CITY OF TIFFIN TEMP 45°

SECTION TOWN RANGE



MONUMENT TYPE MONBOX W/ STONE FND

S.L.M. 491+56.80

DGL SURVEY POINT NO MN11 NORTHING 526408.749 EASTING 1782286.472

33

