

O.D.O.T. DISTRICT 2 SURVEY OFFICE (USE ONLY)

PERSONNEL

REFERENCE NO. 34

SHEET 42 OF 45

NOTES SEA

DATE 12/14/18

ROUTE SR 100

H.C. SEA

WEATHER CLOUDY

COUNTY SENECA

R.C. LL

TEMP. 48°

TOWNSHIP CLINTON

SECTION 19

DWG BY NIESE PID 95778

T 2 N R 15 E

TYPE MONUMENT MONBOX W/STONE

ON SURFACE - ~~BELOW~~ ON

OFFSET \varnothing PAVEMENT _____ LT : RT

- TO - EDGE PAVEMENT

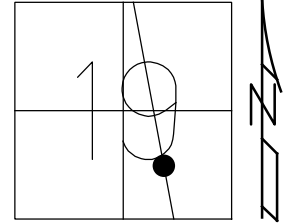
STATION: 503+24

HORIZ.DATUM: _____

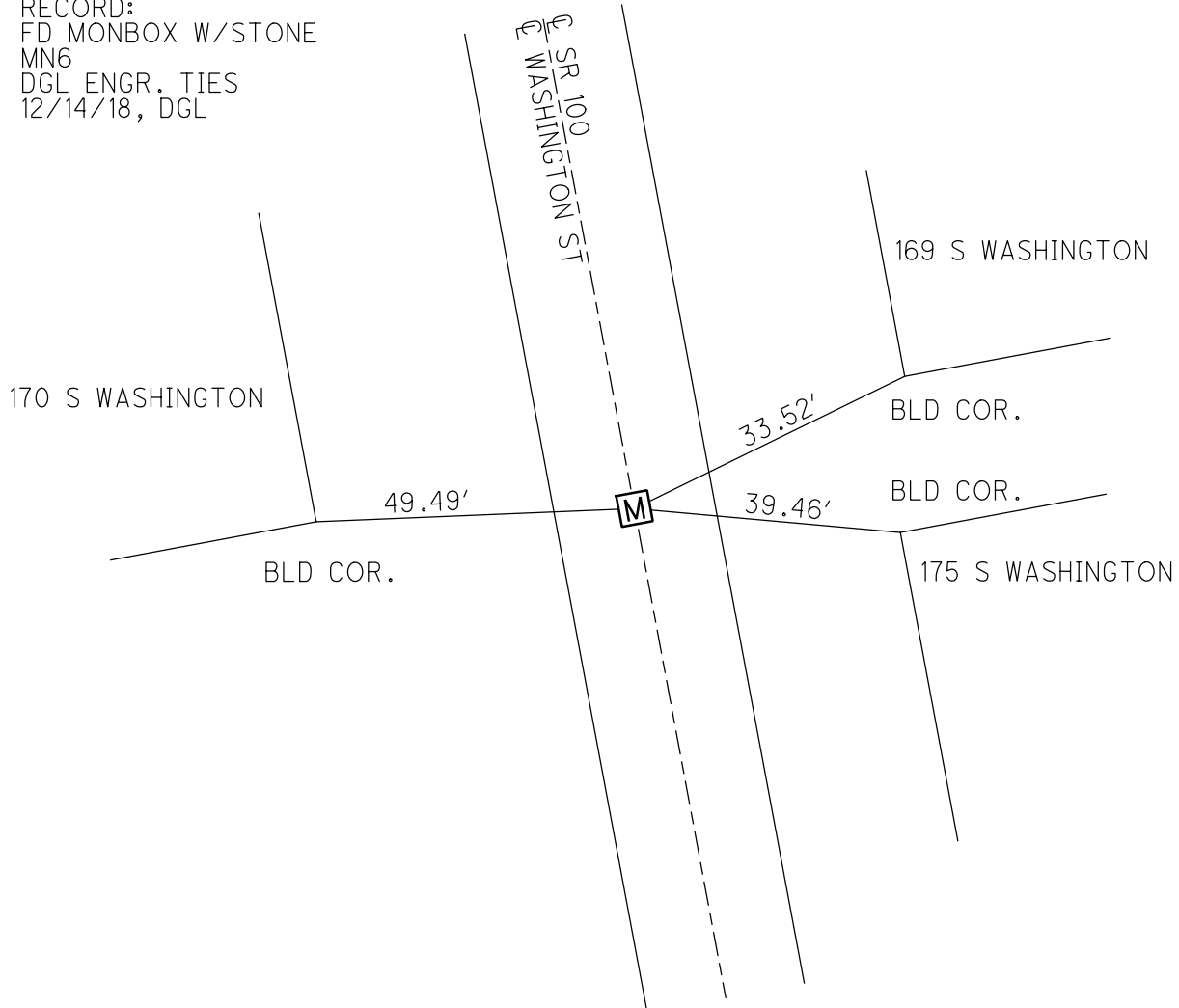
GEOID: _____

GRID: NORTHING: 527568.794

EASTING: 1782157.462



RECORD:
FD MONBOX W/STONE
MN6
DGL ENGR. TIES
12/14/18, DGL





DGL CONSULTING ENGINEERS, LLC
 3455 BRIARFIELD BLVD, SUITE E
 MAUMEE, OHIO 43537
 419.535.1015

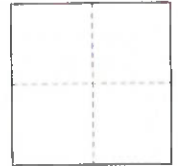
3 POINT REFERENCE TIES

DGL PROJECT NO 18067 ODOT PID 95778

SHEET NO 8 OF 11

CREW _____ TITLE _____
 SEA _____
 LL _____

COUNTY SENECA DATE 12/14/2018
 S.R. STATE ROUTE 100 WEATHER CLOUDY
 TOWNSHIP CITY OF TIFFIN TEMP 45°
 SECTION _____ TOWN _____ RANGE _____



MONUMENT TYPE MONBOX W/ STONE FND
 S.L.M. 503+24.00

DGL SURVEY POINT NO MN6 NORTHING 527568.794 EASTING 1782157.462

35

