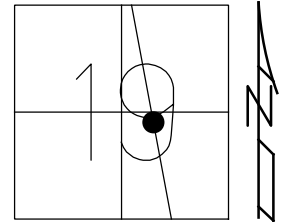


O.D.O.T. DISTRICT 2 SURVEY OFFICE (USE ONLY)

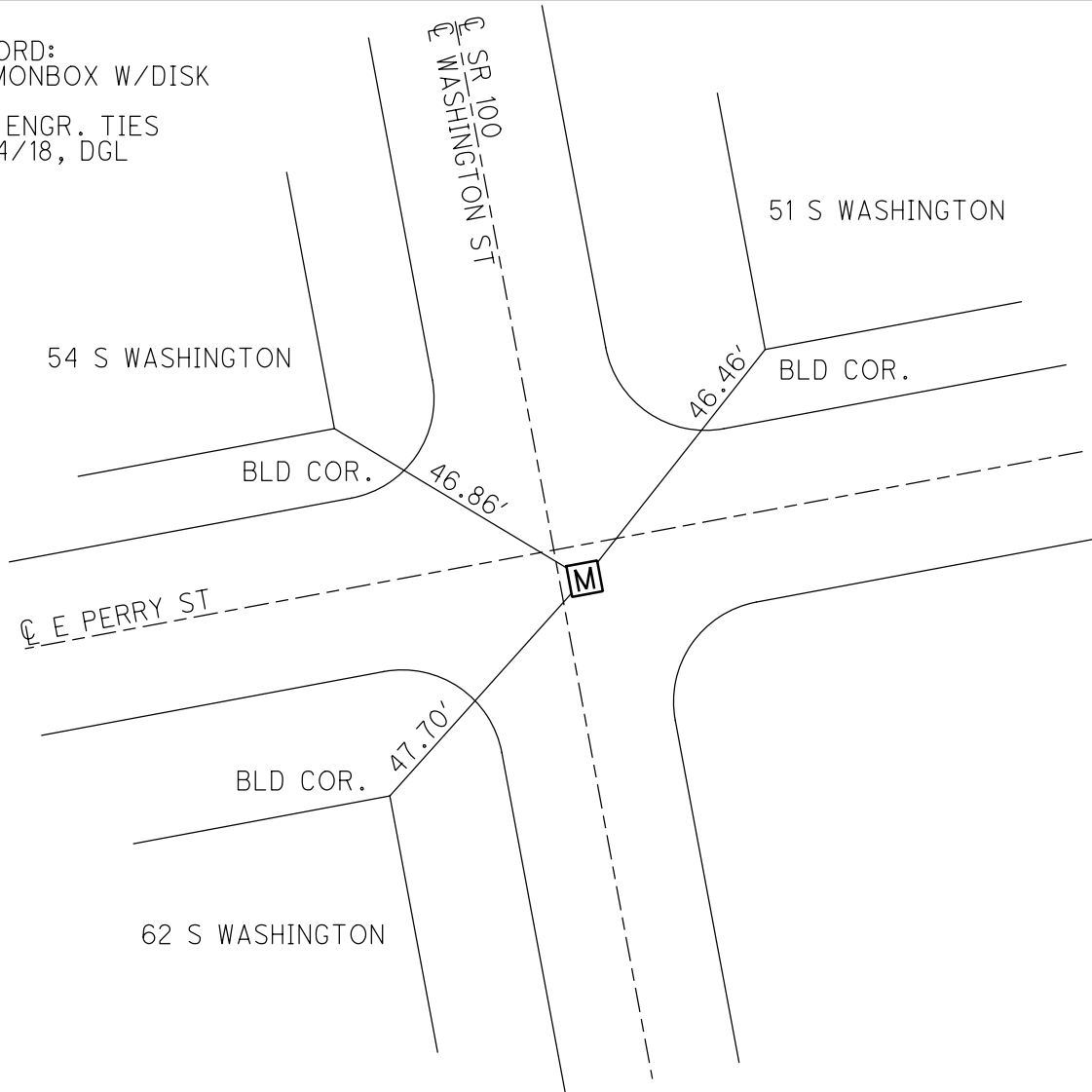
PERSONNEL _____ REFERENCE NO. 35 SHEET 43 OF 45
 NOTES SEA DATE 12/14/18 ROUTE SR 100
 H.C. SEA WEATHER CLOUDY COUNTY SENECA
 R.C. LL TEMP. 45° TOWNSHIP CLINTON
 DWG BY NIESE PID 95778 SECTION 19
 T 2 N R 15 E

TYPE MONUMENT MONBOX W/DISK
 ON SURFACE - ~~BELOW~~ ON
 OFFSET Q PAVEMENT _____ LT : RT
 - TO EDGE PAVEMENT
 STATION: 514+47.29



HORZ.DATUM: _____ GEOID: _____
 GRID: NORTHING: 528685.186 EASTING: 1782033.167

RECORD:
 FD MONBOX W/DISK
 MN3
 DGL ENGR. TIES
 12/14/18, DGL





DGL CONSULTING ENGINEERS, LLC
 3455 BRIARFIELD BLVD, SUITE E
 MAUMEE, OHIO 43537
 419.535.1015

3 POINT REFERENCE TIES

DGL PROJECT NO 18067 ODOT PID 95778

SHEET NO 9 OF 11

CREW TITLE

COUNTY SENECA DATE 12/14/2018

SEA _____

S.R. STATE ROUTE 100 WEATHER CLOUDY

LL _____

TOWNSHIP CITY OF TIFFIN TEMP 45°

MONUMENT TYPE MONBOX W/ DISK END

S.L.M. 514+47.29

SECTION _____ TOWN _____ RANGE _____



DGL SURVEY POINT NO MN3 NORTHING 528685.186 EASTING 1782033.167

36

