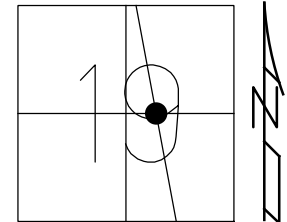


O.D.O.T. DISTRICT 2 SURVEY OFFICE (USE ONLY)

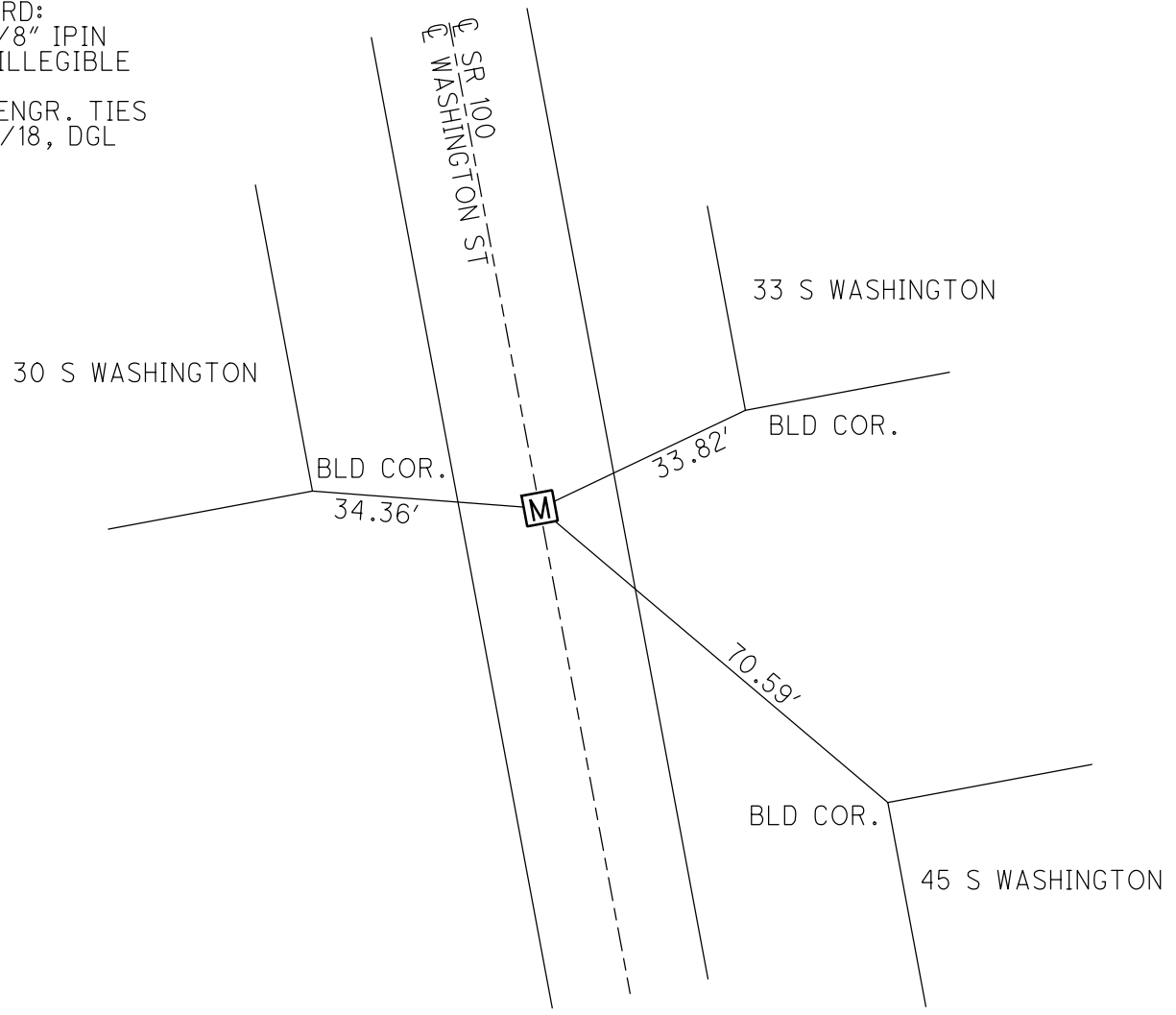
PERSONNEL _____	REFERENCE NO. <u>36</u>	SHEET <u>44</u> OF <u>45</u>
NOTES <u>SEA</u>	DATE <u>12/14/18</u>	ROUTE <u>SR 100</u>
H.C. <u>SEA</u>	WEATHER <u>CLOUDY</u>	COUNTY <u>SENECA</u>
R.C. <u>LL</u>	TEMP. <u>45°</u>	TOWNSHIP <u>CLINTON</u>
DWG BY <u>NIESE</u>	PID <u>95778</u>	SECTION <u>19</u>
		T <u>2</u> N R <u>15</u> E

TYPE MONUMENT 5/8" IPID (ILLEGIBLE)  
 ON SURFACE - ~~BELOW~~ ON  
 OFFSET  $\odot$  PAVEMENT \_\_\_\_\_ LT : RT  
 - TO - EDGE PAVEMENT  
 STATION: 516+69.62



HORZ.DATUM: \_\_\_\_\_ GEOID: \_\_\_\_\_  
 GRID: NORTHING: 528906.135 EASTING: 1782008.406

RECORD:  
 FD 5/8" IPIN  
 CAP ILLEGIBLE  
 MN2  
 DGL ENGR. TIES  
 12/14/18, DGL





DGL CONSULTING ENGINEERS, LLC  
 3455 BRIARFIELD BLVD, SUITE E  
 MAUMEE, OHIO 43537  
 419.535.1015

3 POINT REFERENCE TIES

DGL PROJECT NO 18067 ODOT PID 95778

SHEET NO 10 OF 11

CREW \_\_\_\_\_ TITLE \_\_\_\_\_

COUNTY SENECA DATE 12/14/2018

SEA \_\_\_\_\_

S.R. STATE ROUTE 100 WEATHER CLOUDY

LL \_\_\_\_\_

TOWNSHIP CITY OF TIFFIN TEMP 45°

MONUMENT TYPE 5/8" I PIN FND (CAP ILLEGABLE)

S.I.M. 516+69.62

SECTION \_\_\_\_\_ TOWN \_\_\_\_\_ RANGE \_\_\_\_\_



DGL SURVEY POINT NO MN2 NORTHING 528906.135 EASTING 1782008.406

37

