

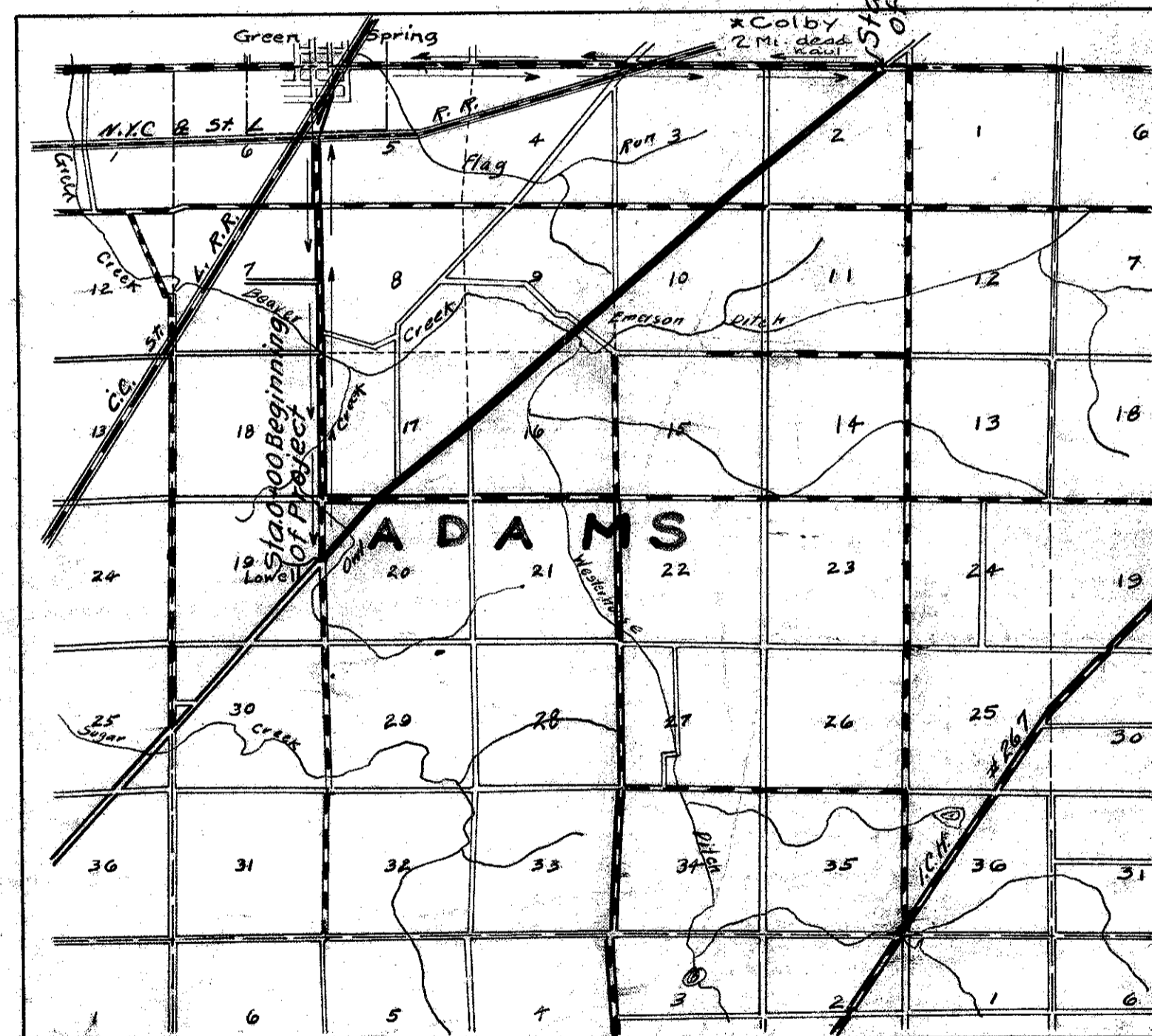
STATE OF OHIO  
DEPARTMENT OF HIGHWAYS AND PUBLIC WORKS  
DIVISION OF HIGHWAYS  
**TIFFIN-BELLEVUE ROAD**  
I.C.H. 271 SEC. J PET. NO. 4997  
**SENECA COUNTY**  
ADAMS TOWNSHIP DECEMBER 1926

INDEX

Title page.	Page 1
Typical Cross-Section.	2
Plan and Profile.	3-11
Cross Sections.	12-29
Structural Plans.	30-35
Summary Sheet.	36-38
SUPPLEMENTAL PRINTS OF STRUCTURAL STANDARDS,	
DRAWING NUMBER #88 of 100	
" " #305 & #300	
" " 8-36-2430	
" " 301-5	

**CONVENTIONAL SIGNS**

State line	-----
County line	-----
Township line	-----
Section line	-----
Property line - not fenced	-----
Center line	-----
City or Village line	-----
Fence	-----
Telephone or Telegraph	TTTTTTTTTT
Steam rail road	=====
Electric line	-----
Coard rail	-----
Drain pipe - New	-----
Drain pipe - Old	-----
Hedge fence.	-----



LOCATION PLAN

SCALE OF MILES

PORTION TO BE IMPROVED  
DETOURS SHOWN THUS  
IMPROVED ROADS

SCALES

Plan	1" = 100'
Profile (Vertical)	1" = 10'
Profile (Horizontal)	1" = 100'
Cross Sections	1" = 5'

We the Commissioners of Seneca County hereby approve these plans and certify that the right-of-way 60 feet is available for the construction, maintenance, and repair of the above highway.

*L. W. Johnson*  
*M. B. Hunter*  
*S. A. Richter*

Date: Aug 17 1927 County Commissioners.

The Standard Specifications of the State of Ohio, Division of Highways, in force on date of contract will govern this improvement.

I hereby approve these plans and declare that the making of this improvement will require the closing to traffic of the highway and that detours will be provided as shown on the plans and estimate.

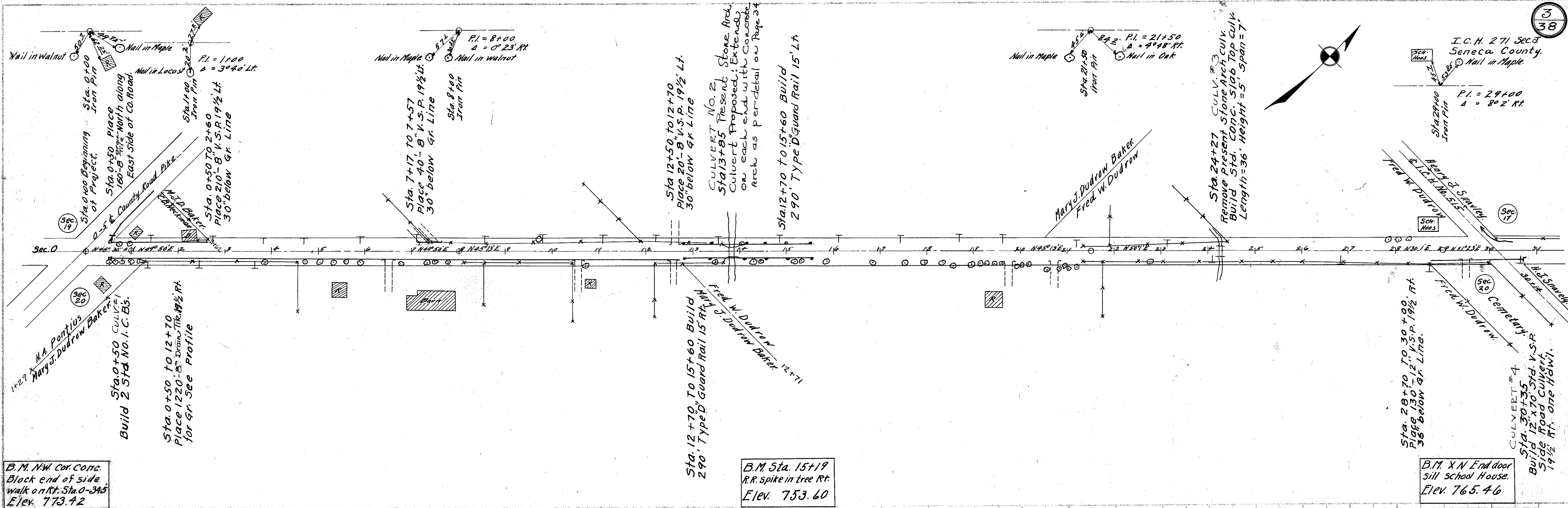
- Approved: *Harold Z. Johnson*  
Date: Aug 17 1927 Resident Engineer.
- Approved: *M. J. Henahan*  
Date: 9-19-27 Res. Dep. State Highway Comm.
- Approved: \_\_\_\_\_  
Date: \_\_\_\_\_ Chief Engr. Bureau Maintenance & Repair
- Approved: \_\_\_\_\_  
Date: \_\_\_\_\_ Chief Engineer, Bureau of Construction.
- Approved: *J. Burkley*  
Date: 10-7-27 Chief Engineer Bureau of Bridges.
- Approved: *Harley J. Kirk*  
Date: 10-18-27 State Highway Engineer
- Approved: *E. F. Schellinger*  
Date: 10-18-27 Director of Highways & Public Works.
- Approved: \_\_\_\_\_  
Date: \_\_\_\_\_ Distric Engr. Bureau of Public Roads.
- Approved: \_\_\_\_\_  
Date: \_\_\_\_\_ Chief Engr. Bureau of Public Roads.
- Approved: \_\_\_\_\_  
Date: \_\_\_\_\_ Chief of Bureau.



*10/7-27*

FOR ANY QUESTIONS PLEASE CONTACT ODOT DISTRICT 2 REAL ESTATE AT 419-353-8131

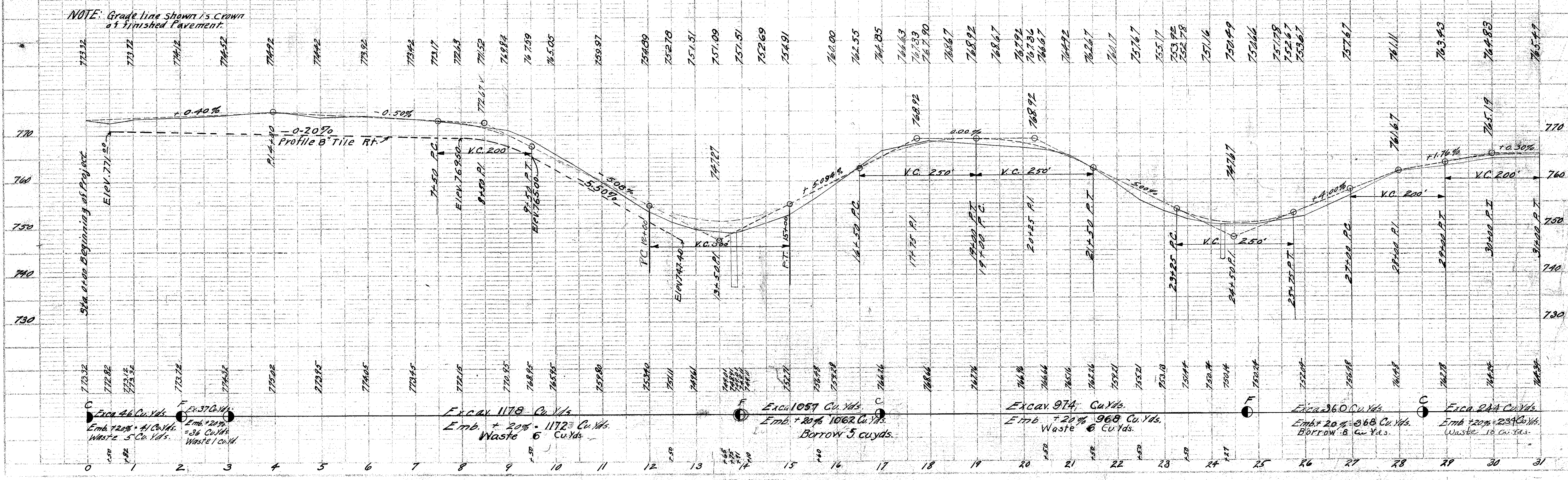
PLAN  
 DATE: 10/1/10  
 DRAWN BY: [illegible]  
 CHECKED BY: [illegible]  
 IN CHARGE: [illegible]

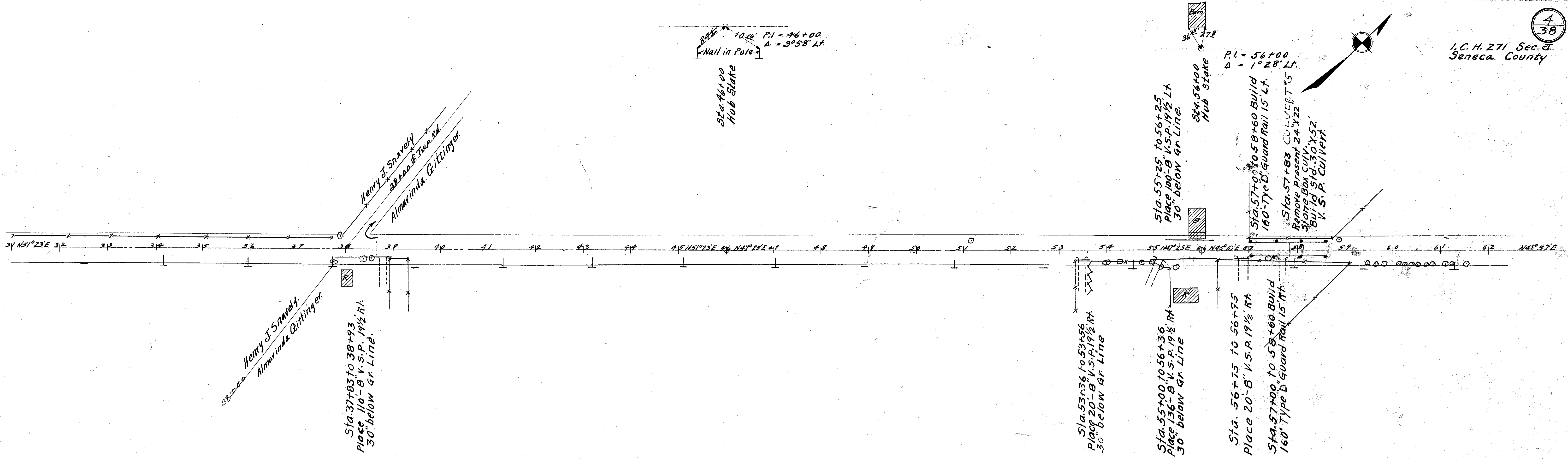


B.M. NW Cor. Corc.  
 Black end of side  
 walk on Rt. Sta. 0+345  
 Elev. 773.42

B.M. Sta. 15+19  
 R.R. spike in tree Rt.  
 Elev. 753.60

B.M. X N End door  
 sill School House.  
 Elev. 765.46

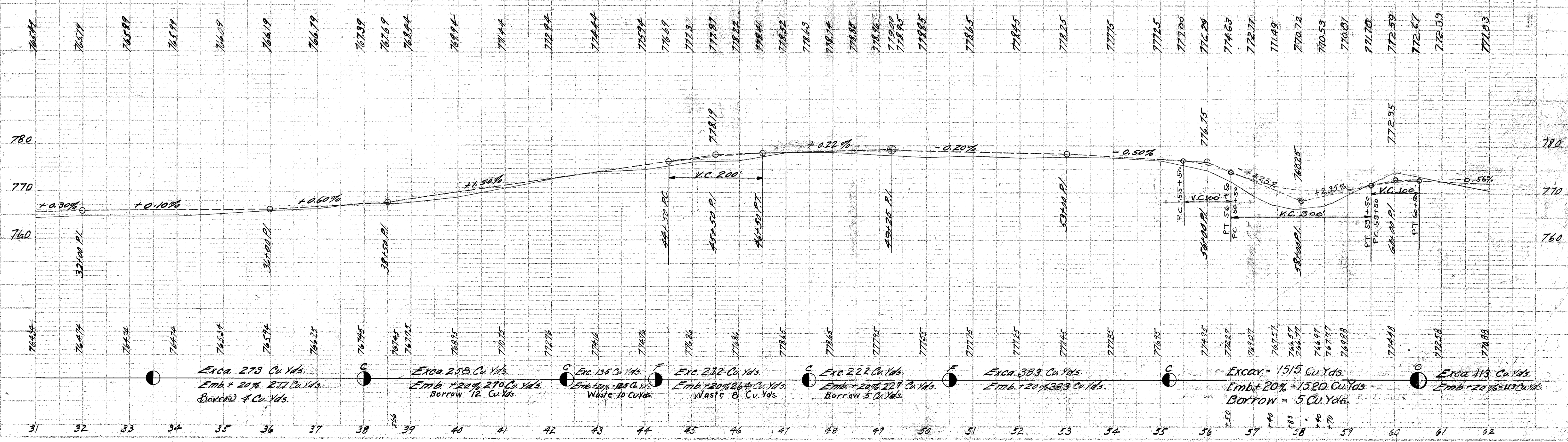




B.M. Sta. 51+15  
RR Spike in Maple Lt.  
Elev. 779.39

B.M. Sta. 61+16  
RR Spike Walnut Rt.  
Elev. 773.16

NOTE: Grade line shown is  
crown at finished pavement.

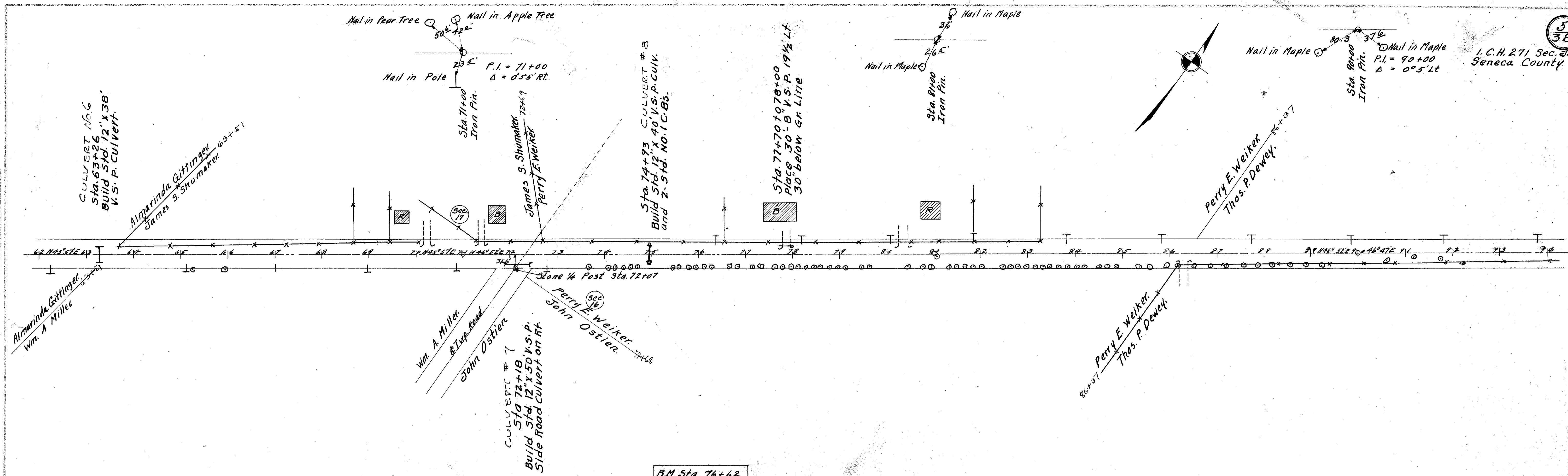


FOR ANY QUESTIONS PLEASE CONTACT ODOT DISTRICT 2 REAL ESTATE AT 419-353-8131

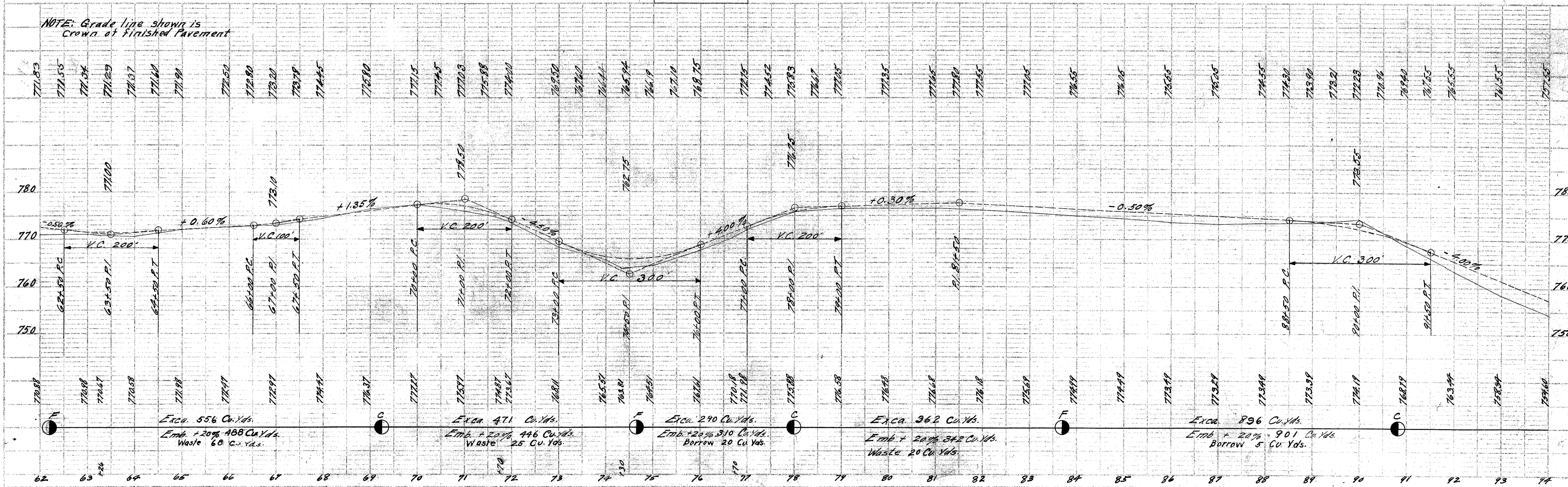
DATE	10/1/00
BY	...
CHECKED	...
SCALE	AS SHOWN
PROJECT	...
NO.	...

DATE	10/1/00
BY	...
CHECKED	...
SCALE	AS SHOWN
PROJECT	...
NO.	...

I.C.H. 271, Sec. 5,  
Seneca County.



NOTE: Grade line shown is  
Crown of finished pavement



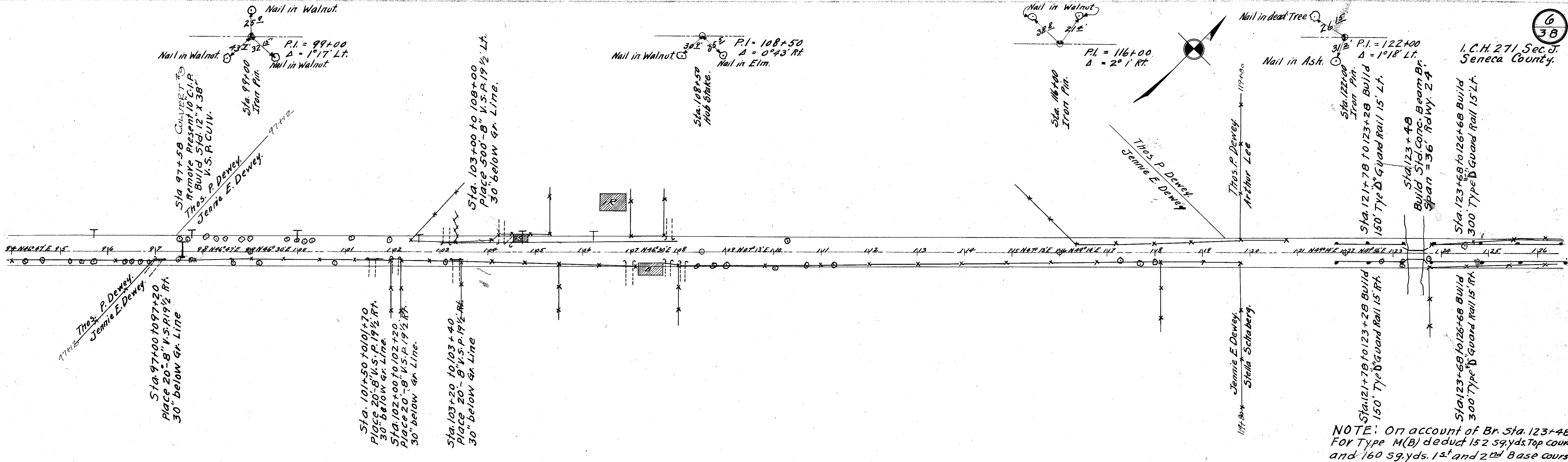
PLAN
CHECKED
DESIGNED
DATE
BY
SCALE
PROJECT
NO. SHEET
TOTAL SHEETS

DATE
BY
SCALE
PROJECT
NO. SHEET
TOTAL SHEETS

FOR ANY QUESTIONS PLEASE CONTACT ODOT DISTRICT 2 REAL ESTATE AT 419-353-8131

PLAN	DATE
DATE	BY
DATE	BY
DATE	BY

PROJECT	NO.
DATE	BY
DATE	BY
DATE	BY



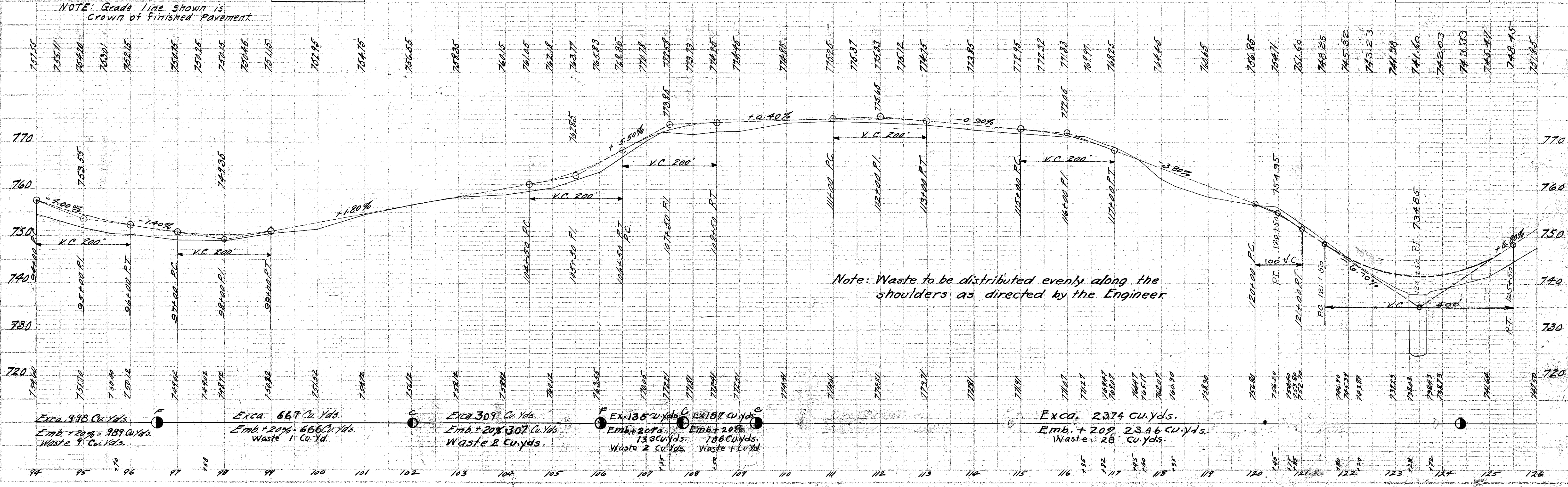
6  
38

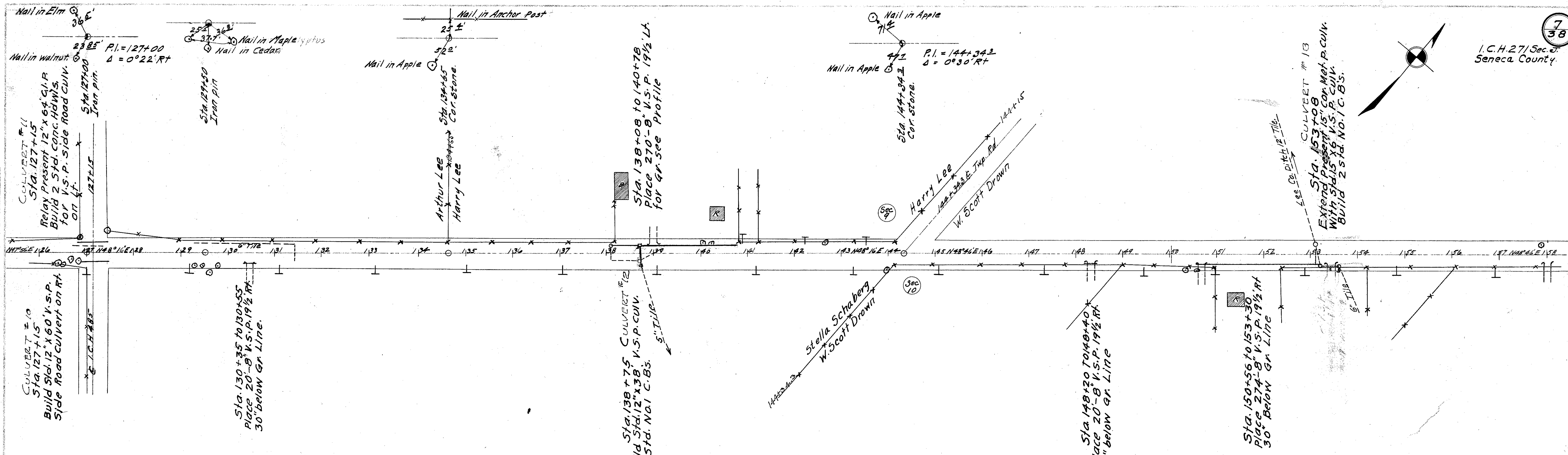
I.C.H. 271 Sec. 5, Seneca County.

B.M. Sta. 100+35  
R.R. Spike Walnut Pt  
Elev. 753.27

B.M. Sta. 124+50  
R.R. Spike in Ash Lt.  
Elev. 734.80

NOTE: On account of Br. Sta. 123+48 For Type M(B) deduct 152 sq.yds. Top course and 160 sq.yds. 1st and 2nd Base course





PLAN	DATE	BY
NOTE BOOK		

CULVERT #10  
Sta. 127+15  
Build Side Road Culvert on Rt.  
12" x 12" V.S.P.

Sta. 130+35 to 130+55  
Place 20-8 V.S.P. 19 1/2 RT.  
30' below Gr. Line.

Sta. 138+75 CULVERT #12  
Build Side Road Culvert on Rt.  
24" x 24" V.S.P. 19 1/2 RT.  
30' below Gr. Line.

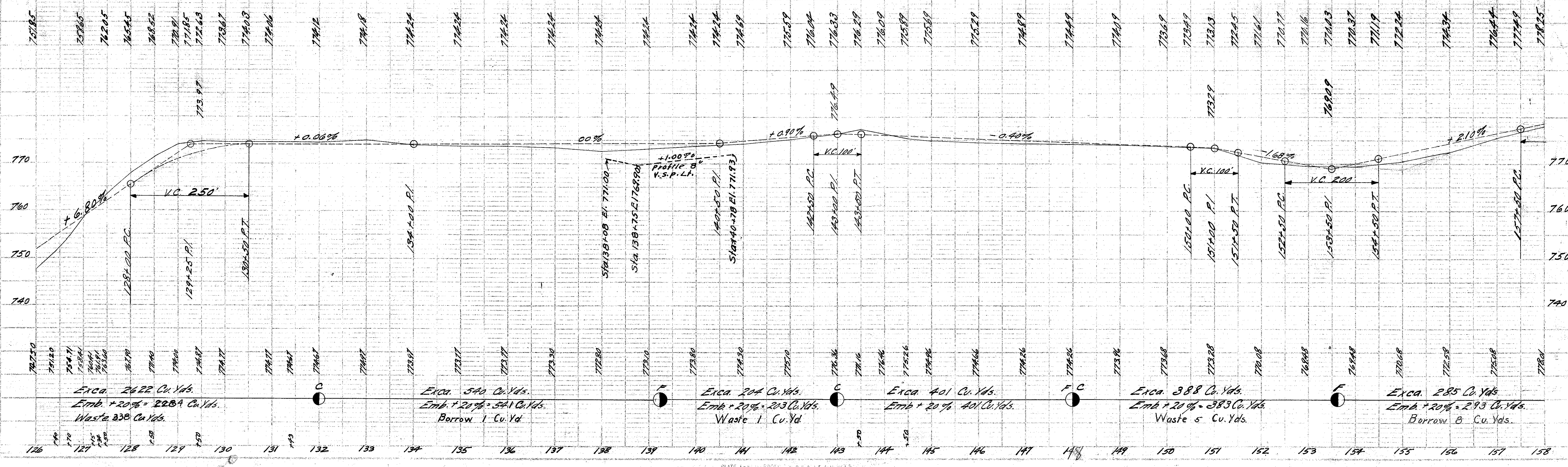
Sta. 148+20 to 148+40  
Place 20-8 V.S.P. 19 1/2 RT.  
30' below Gr. Line

Sta. 150+56 to 153+30  
Place 274-8 V.S.P. 19 1/2 RT.  
30' below Gr. Line

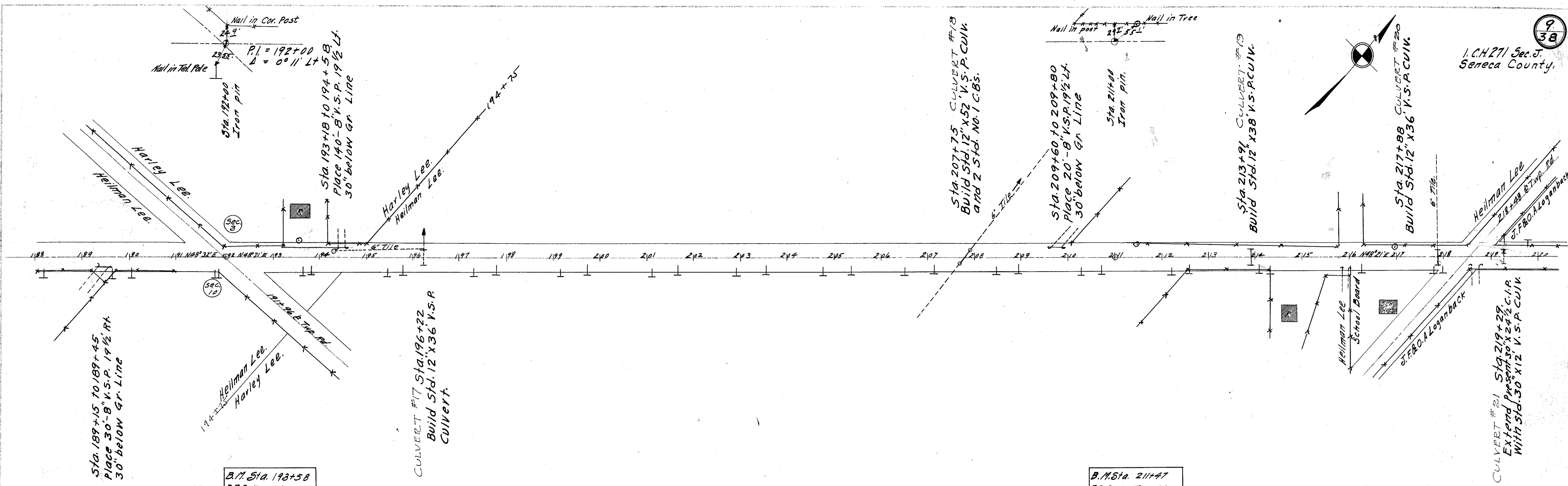
B.M. Sta. 129+76  
R.R. Spike in Maple Rt  
Elev. 774.94

B.M. Sta. 151+60  
R.R. Spike in Maple Rt  
Elev. 775.13

NOTE: Grade line shown is  
Crown of finished pavement.



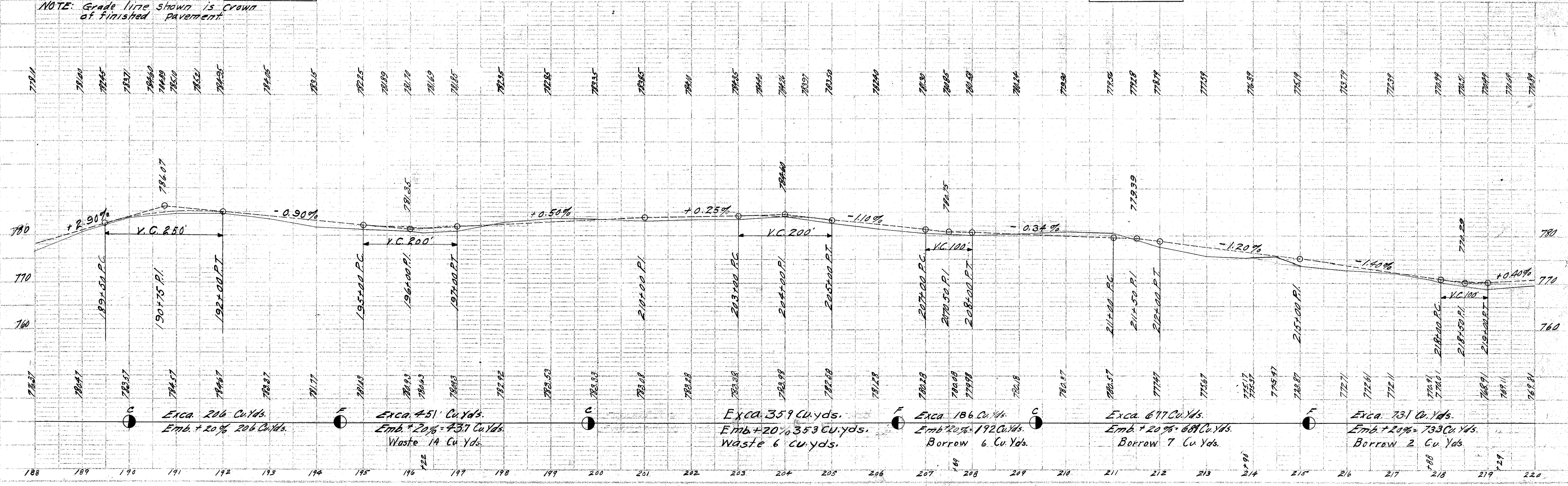




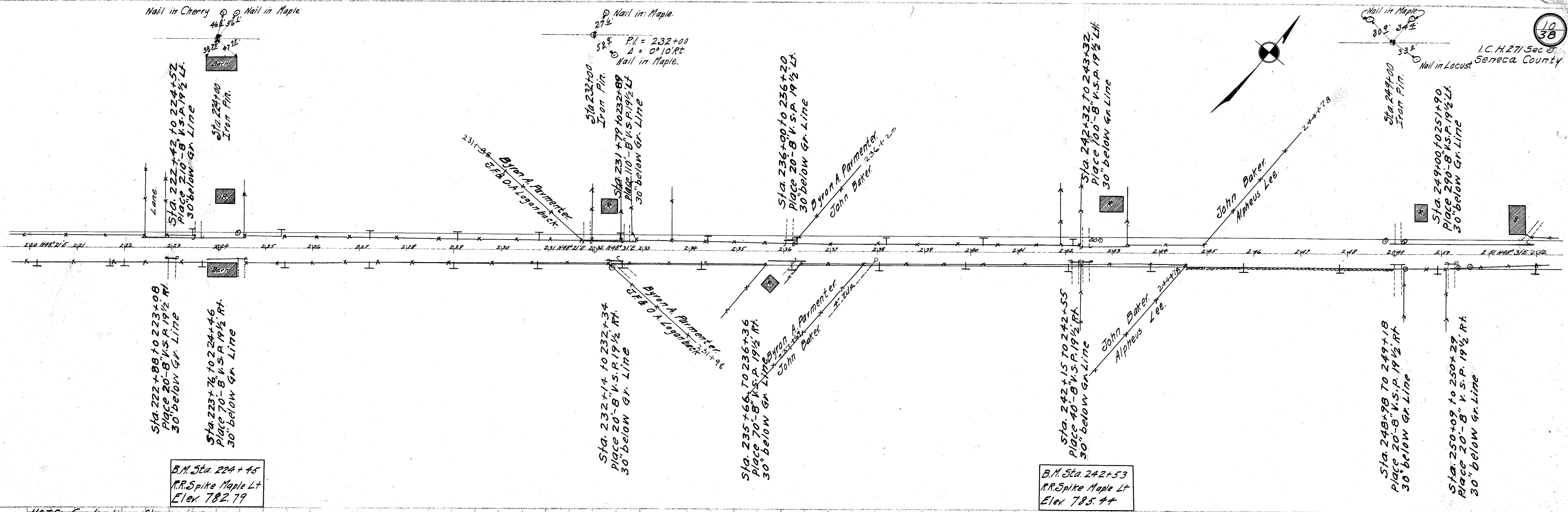
B.M. Sta. 193+58  
R.R. Spike Walnut Lt  
Elev. 784.81

B.M. Sta. 211+47  
R.R. Spike Tree Lt  
Elev. 780.38

NOTE: Grade line shown is crown of finished pavement



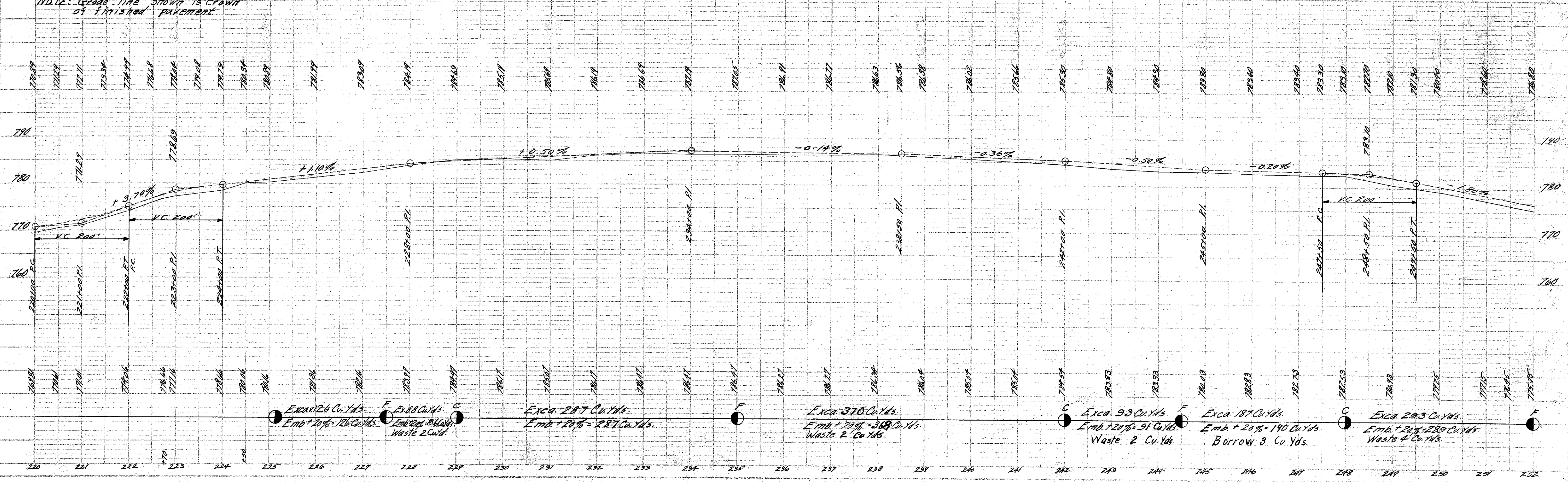




B.M. Sta. 224+45  
R.R. Spike Maple Lt  
Elev. 782.79

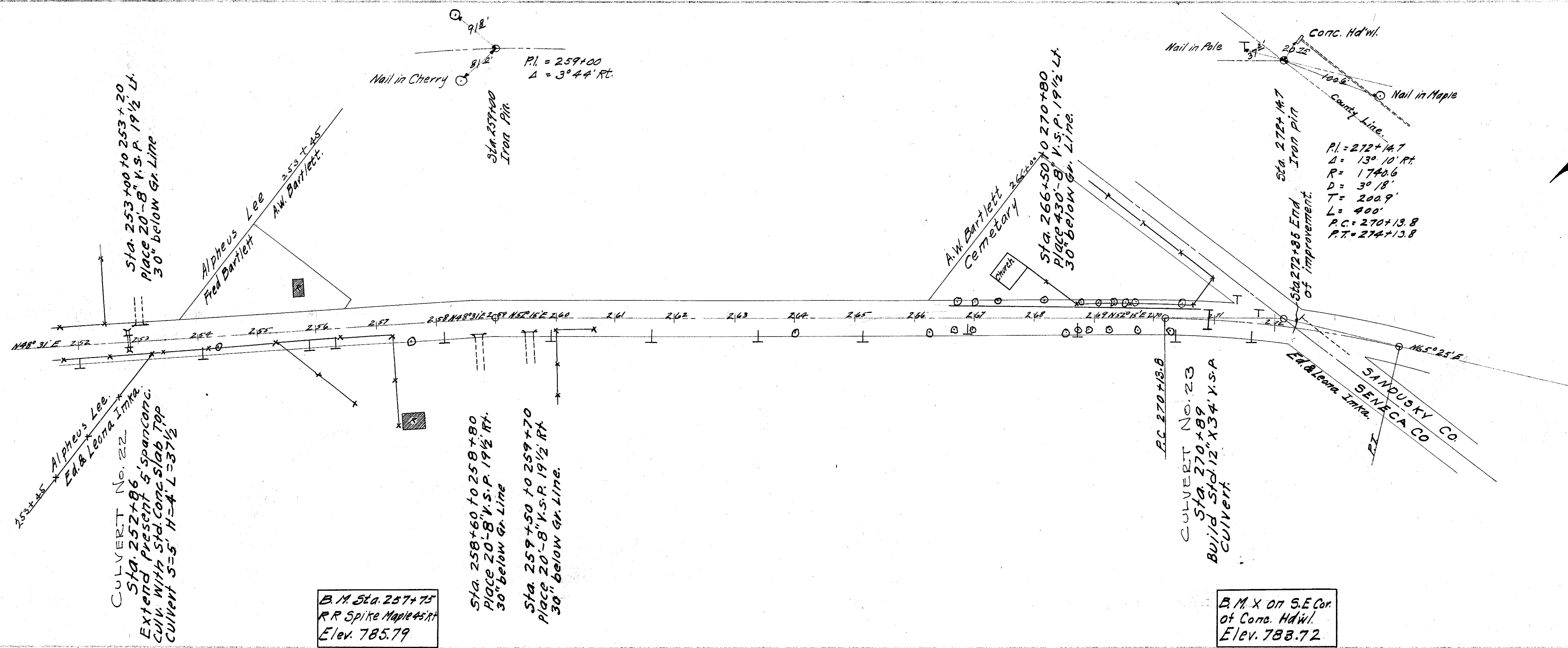
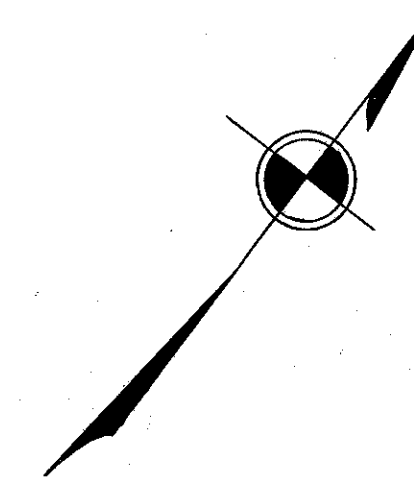
B.M. Sta. 242+53  
R.R. Spike Maple Lt  
Elev. 785.44

NOTE: Grade line shown is crown of finished pavement.



PLAN	DATE	BY
REVISED		
NOTE BOOK		
NO. OF SHEETS		
NO. OF SHEETS USED		

PROFILE	DATE	BY
REVISED		
NOTE BOOK		
NO. OF SHEETS		
NO. OF SHEETS USED		



LEFT		RIGHT	
Edge of Pavement	Width	Grade Elevation	Edge of Pavement
783.09	9	269+13.8	783.24
783.21	9	269+38.8	783.20
783.33	9	269+63.8	783.16
783.45	9	269+88.8	783.12
783.57	9	270+13.8	783.08
783.53	9	270+38.8	783.04
783.49	9	270+63.8	783.00
783.45	9	270+88.8	782.96
783.41	9	271+13.8	782.92
783.37	9	271+38.8	782.88
783.33	9	271+63.8	782.84
783.29	9	271+88.8	782.80
783.25	9	272+13.8	782.76
783.22	9	272+35	782.73

B.M. Sta. 257+75  
RR Spike Maps 45 ft  
Elev. 785.79

B.M. X ON S.E. Cor  
of Conc. Hd'wl.  
Elev. 783.72

NOTE: Grade line shown is crown of finished pavement.

