

O.D.O.T. DISTRICT 2 SURVEY OFFICE (USE ONLY)

PERSONNEL

REFERENCE NO. 2

SHEET 2 OF 27

NOTES HOMAN

DATE 6/23/08

ROUTE SR 101

H.C. ROUSOS

WEATHER SUNNY

COUNTY SENECA

R.C. HOMAN

TEMP. 65°

TOWNSHIP CLINTON

DWG BY MILLER

PID 102817

SECTION 20

T 2 N R 15 E

TYPE MONUMENT MAG/WASHER

~~ON SURFACE~~ - BELOW 2"

OFFSET Q PAVEMENT 2.3' LT : ~~RT~~

7.3' TO LT EDGE PAVEMENT

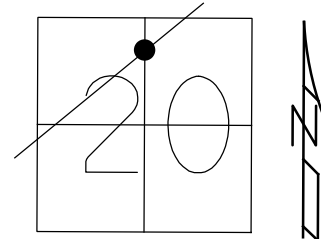
STATION: 85+53

HORZ. DATUM: NAD83 2011

GEOID: 2012A NAVD88

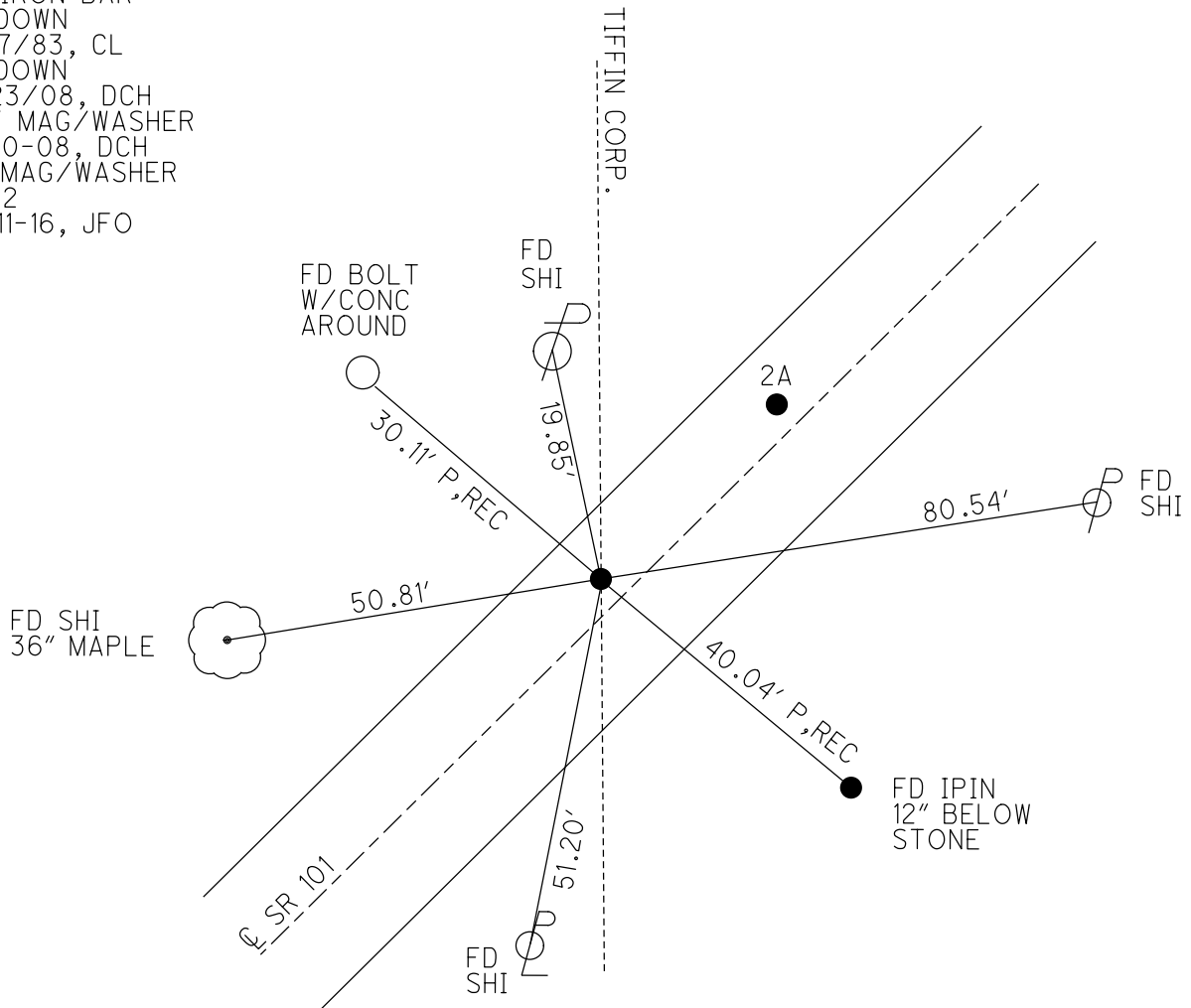
GRID: NORTHING: 531178.113

EASTING: 1786738.205



RECORD:  
 1925 PLAN STA. 0+00  
 FD IRON BAR  
 4" DOWN  
 2/17/83, CL  
 2" DOWN  
 6/23/08, DCH  
 SET MAG/WASHER  
 9-30-08, DCH  
 FD MAG/WASHER  
 REF2  
 10-11-16, JFO

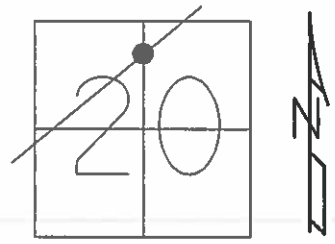
DIST. 2-2A= 16.52'



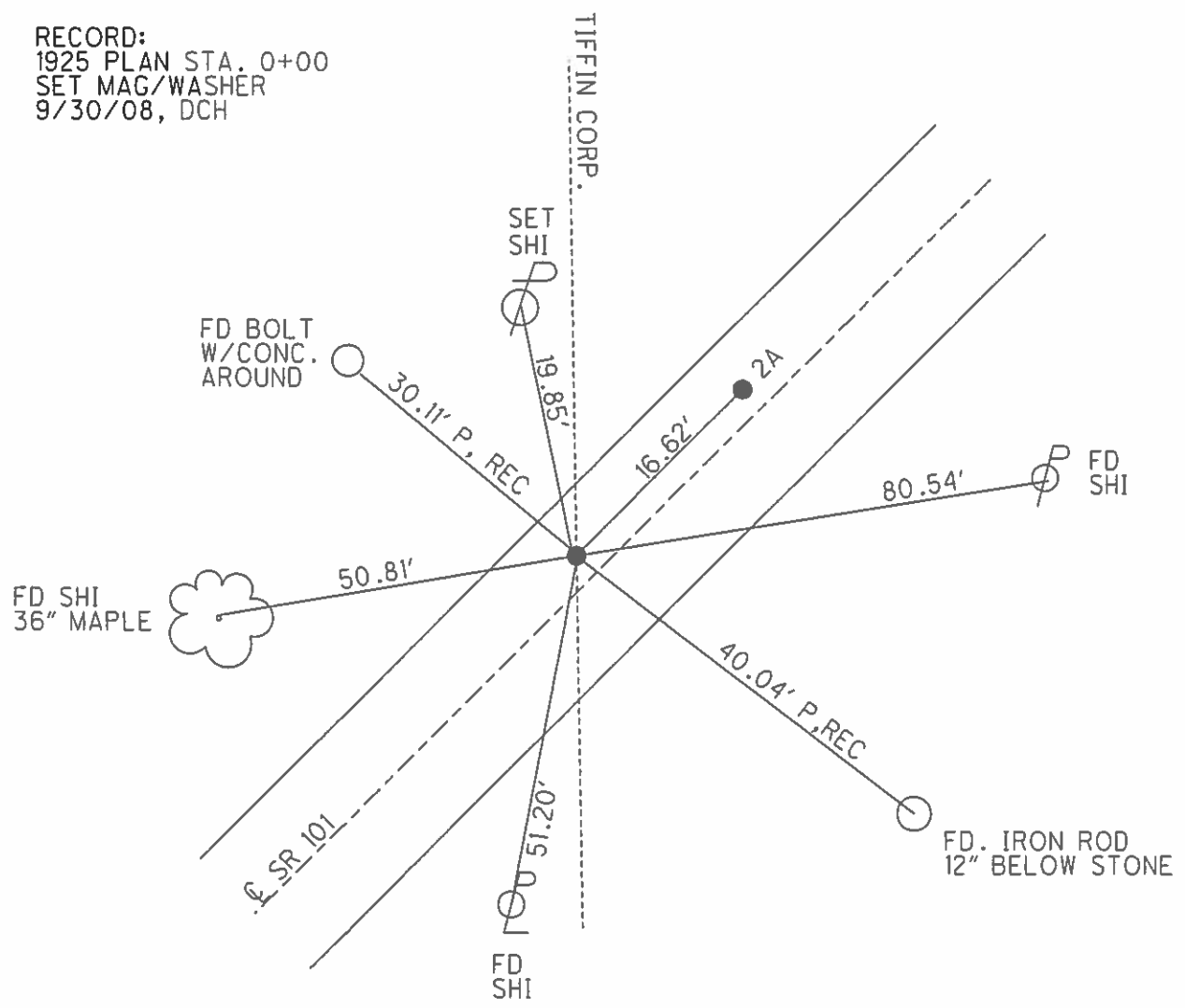
**O.D.O.T. DISTRICT 2 SURVEY OFFICE (USE ONLY)**

PERSONNEL \_\_\_\_\_ REFERENCE NO. 2 SHEET 2 OF 27  
 NOTES HOMAN \_\_\_\_\_ DATE 6/23/08 ROUTE SR 101  
 H.C. ROUSOS \_\_\_\_\_ WEATHER SUNNY COUNTY SENECA  
 R.C. HOMAN \_\_\_\_\_ TEMP. 65° TOWNSHIP CLINTON  
 \_\_\_\_\_ SECTION 20  
 \_\_\_\_\_ T 2 N R 15 E

TYPE MONUMENT IRON BAR  
~~ON SURFACE~~ - BELOW 2"  
 LEFT - ℄ PAV'T - RIGHT 2.3'  
7.3' TO W EDGE PAVEMENT  
 S.L.M. 85+54  
 GRID: NORTHING: 531178.218 EASTING: 1786738.058



RECORD:  
 1925 PLAN STA. 0+00  
 SET MAG/WASHER  
 9/30/08, DCH



# O.D.O.T. DISTRICT 2 SURVEY OFFICE

PERSONNEL

REFERENCE NO. 2

SHEET 2 OF 26

NOTES Cheney

H.C. RIPPLE

R.C. BARBOUR

GEYMAN

DATE 7-9-92

WEATHER SUNNY

TEMP. 60°

ROUTE SR.# 101

COUNTY Seneca

TOWNSHIP CLINTON

SECTION 20

T 2 N R 15 E

TYPE MONUMENT Fd. IRON BAR 4" down (Not covered)

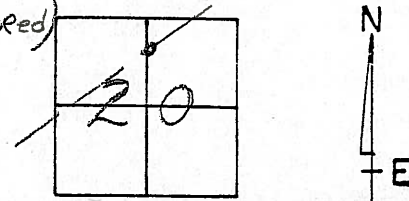
ON SURFACE - ~~BELOW~~ 3' LT. E

~~LEFT - & PAV'T. - RIGHT~~

7.4' TO W. EDGE PAVEMENT

S.L.M. 85+54 ✓ 85+54

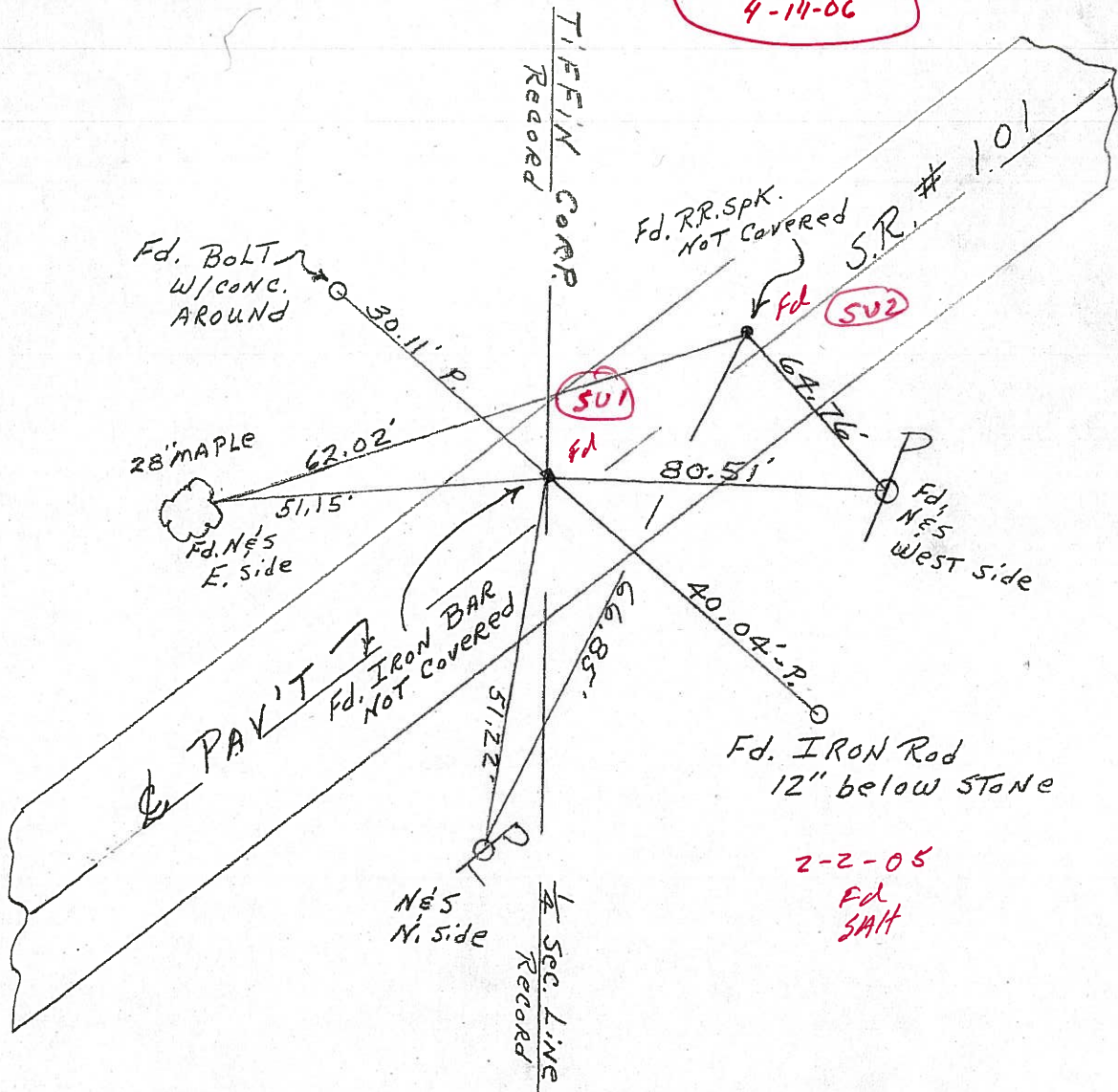
2



Record:

1925 PLAN STA. 0+00

SUI, SU2  
4-14-06



# O.D.O.T. DISTRICT 2 SURVEY OFFICE

PERSONNEL

REFERENCE NO. 2/2A

SHEET 2 OF 26

NOTES Cheney

H.C. RIPPLE

R.C. BARBOUR

Geyman

DATE 7-9-92

WEATHER SUNNY

TEMP. 60°

ROUTE SR.# 101

COUNTY SENECA

TOWNSHIP CLINTON

SECTION 20

T. 2 N R. 15 E

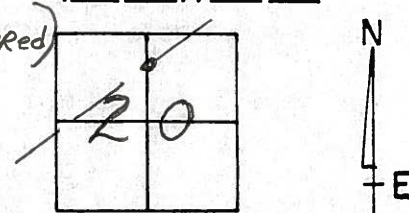
TYPE MONUMENT Fd. IRON BAR 4" down (NOT COVERED)

ON SURFACE - BELOW 3' LT. E.

~~LEFT - PAV'T. - RIGHT~~

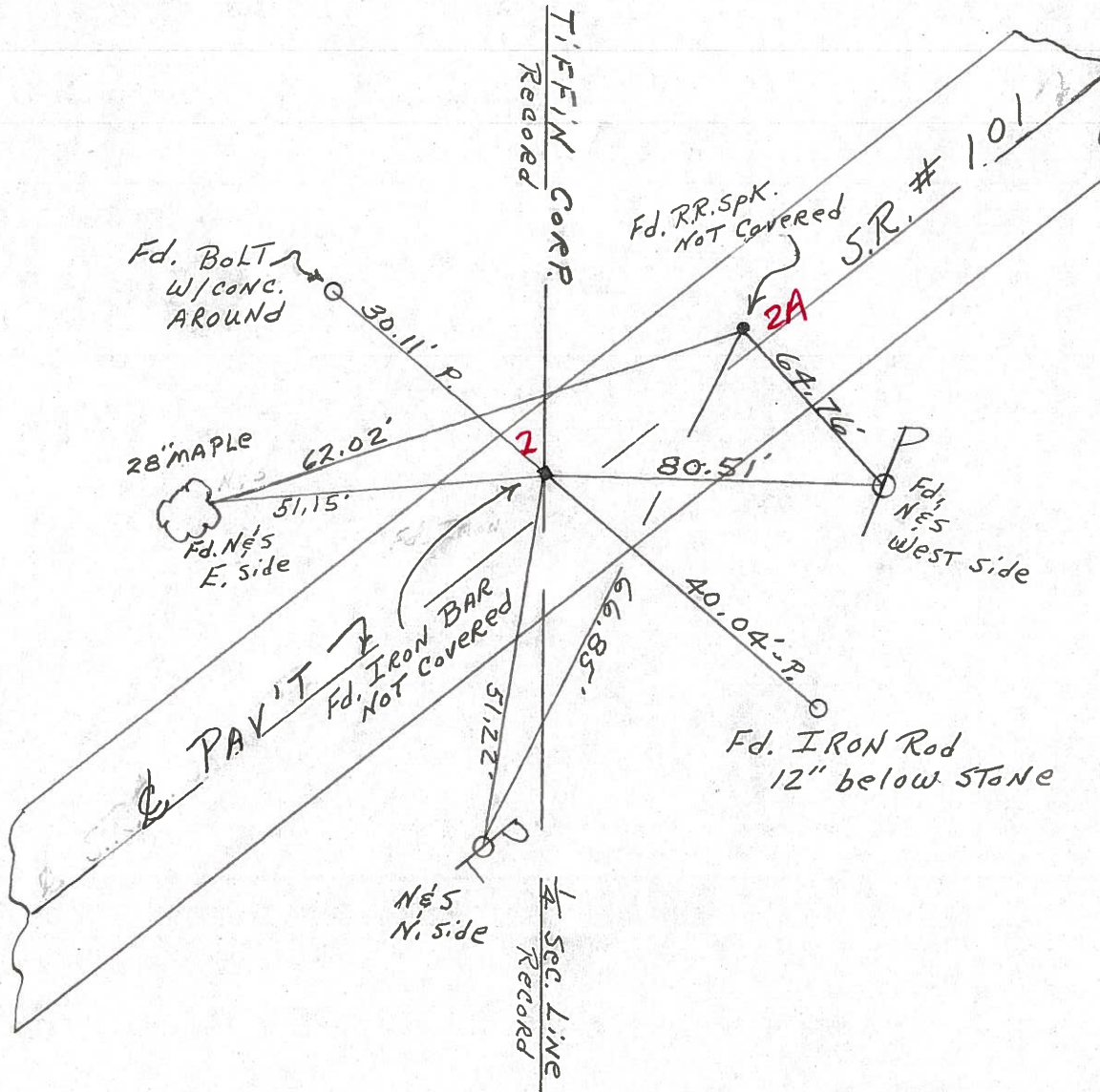
7.4' TO W. EDGE PAVEMENT

S.L.M. 85+54



2

Record:  
1925 PLAN STA. 0+00



County SENECA S.R. 101

Date FEB 17, 83

Township CLINTON

Weather OVERCAST

Section 20

Temp. +35°

T N, R E

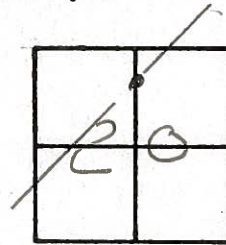
Personnel HOFFMAN

HOUSEHOLDER

LOEHRLE

BARNHISEL

~~4~~ 2



Fd IRON BAR 4" Below Surface

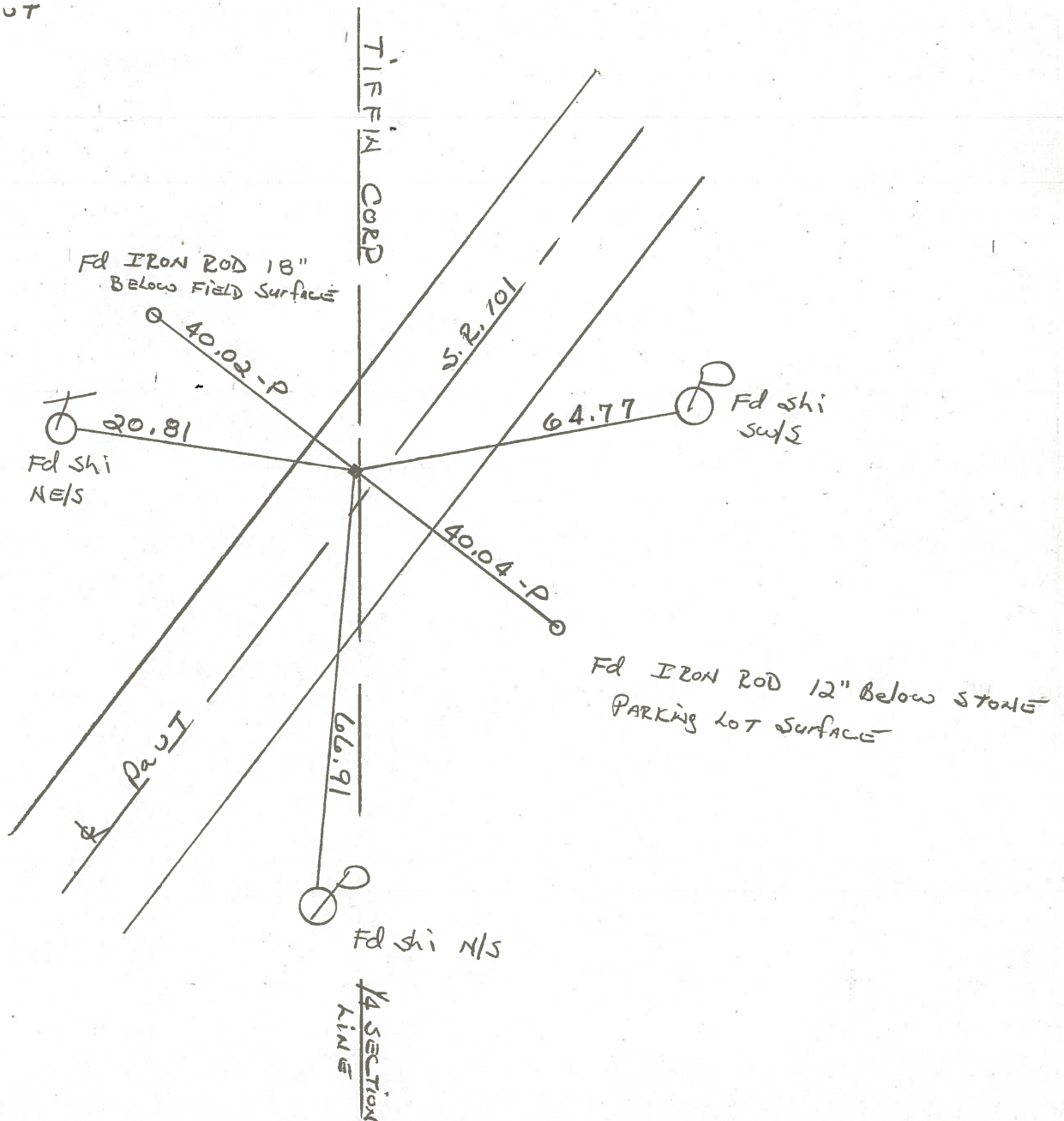
S.L.M. 87+08.51

1925 PLAN STA. 0+00

2.8' LT. of & PAUT

7.4' TO W.E.P.

14.6' TO E.E.P.

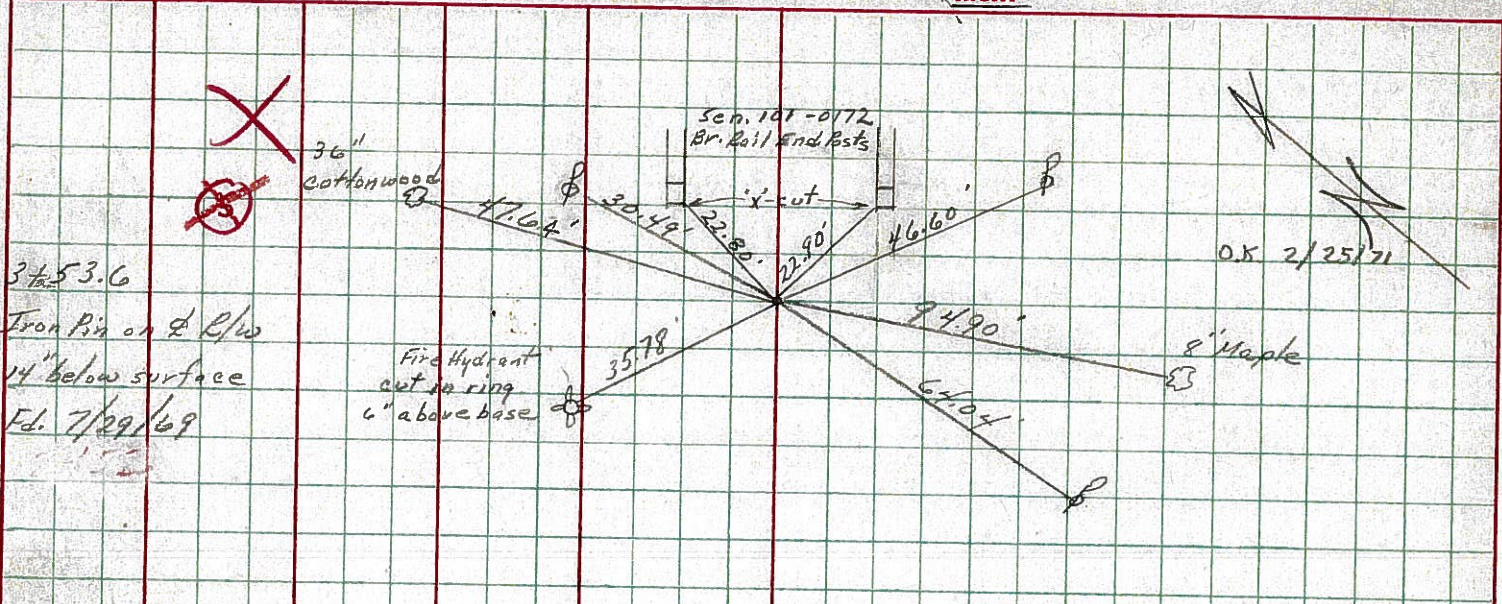


PERSONNEL TITLE PERSONNEL TITLE  
 Cronin \_\_\_\_\_  
 Ripple \_\_\_\_\_  
 Geyman \_\_\_\_\_  
 Anderson \_\_\_\_\_

COUNTY Seneca DATE 3/4/70  
 S. R. #107 (Sta # 271) WEATHER \_\_\_\_\_  
 SEC I-K-0-31 TEMP \_\_\_\_\_

DESCRIPTION Ties for Control Points - Tiffin Corp. to Sandusky Co. Line JOB NO. \_\_\_\_\_  
 LEFT CENTER LINE RIGHT

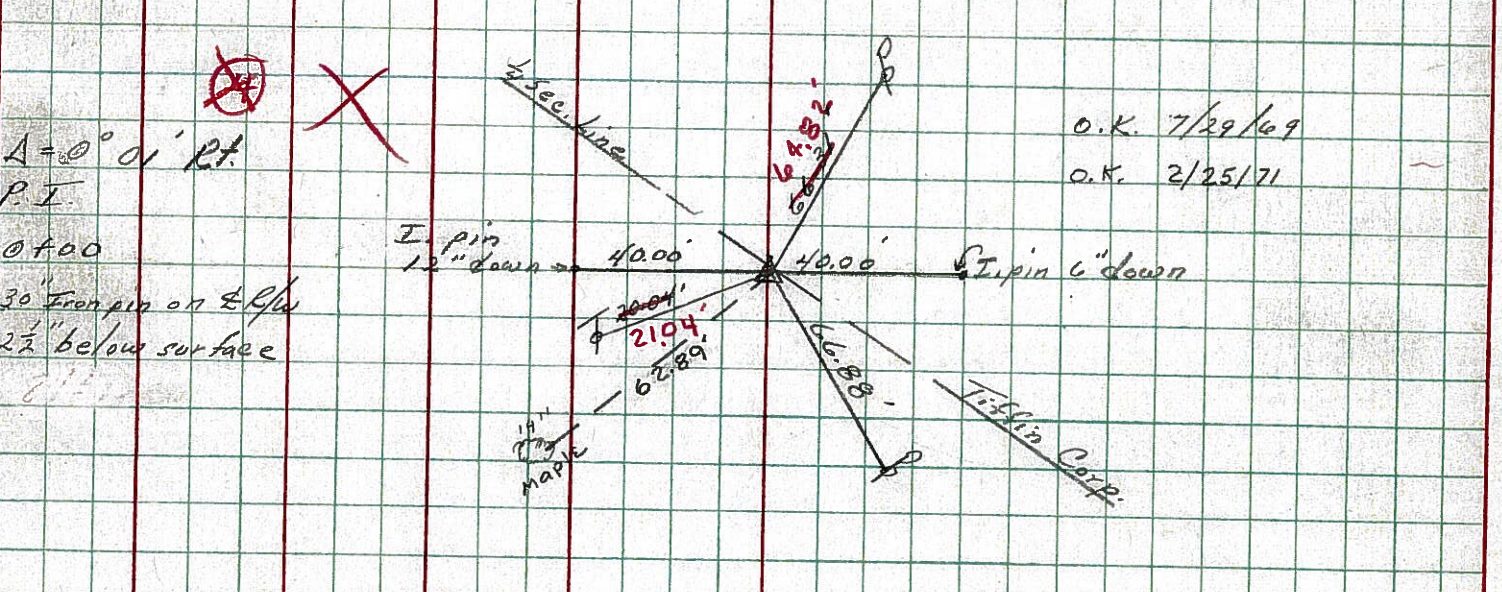
3



3 1/2 53.6  
 Iron Pin on E R/W  
 14" below surface  
 Ed. 7/29/69

O.K. 2/25/71

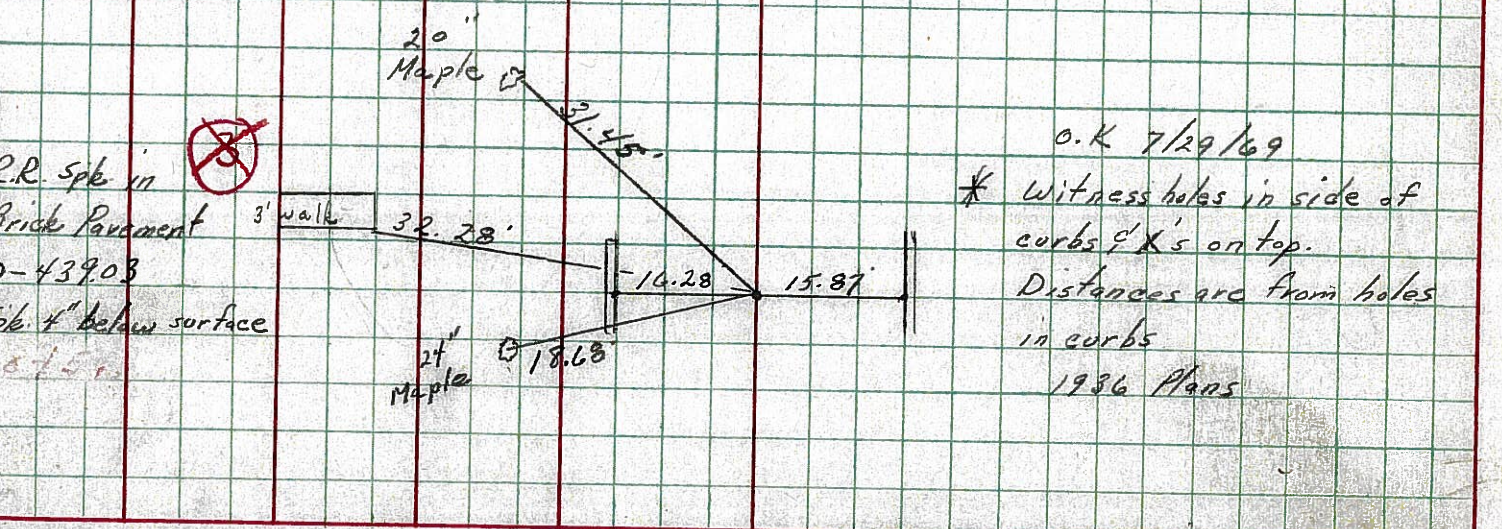
2



A = 0° 01' Rt.  
 P.I.  
 @ 400  
 30" Iron pin on E R/W  
 2 1/2" below surface

O.K. 7/29/69  
 O.K. 2/25/71

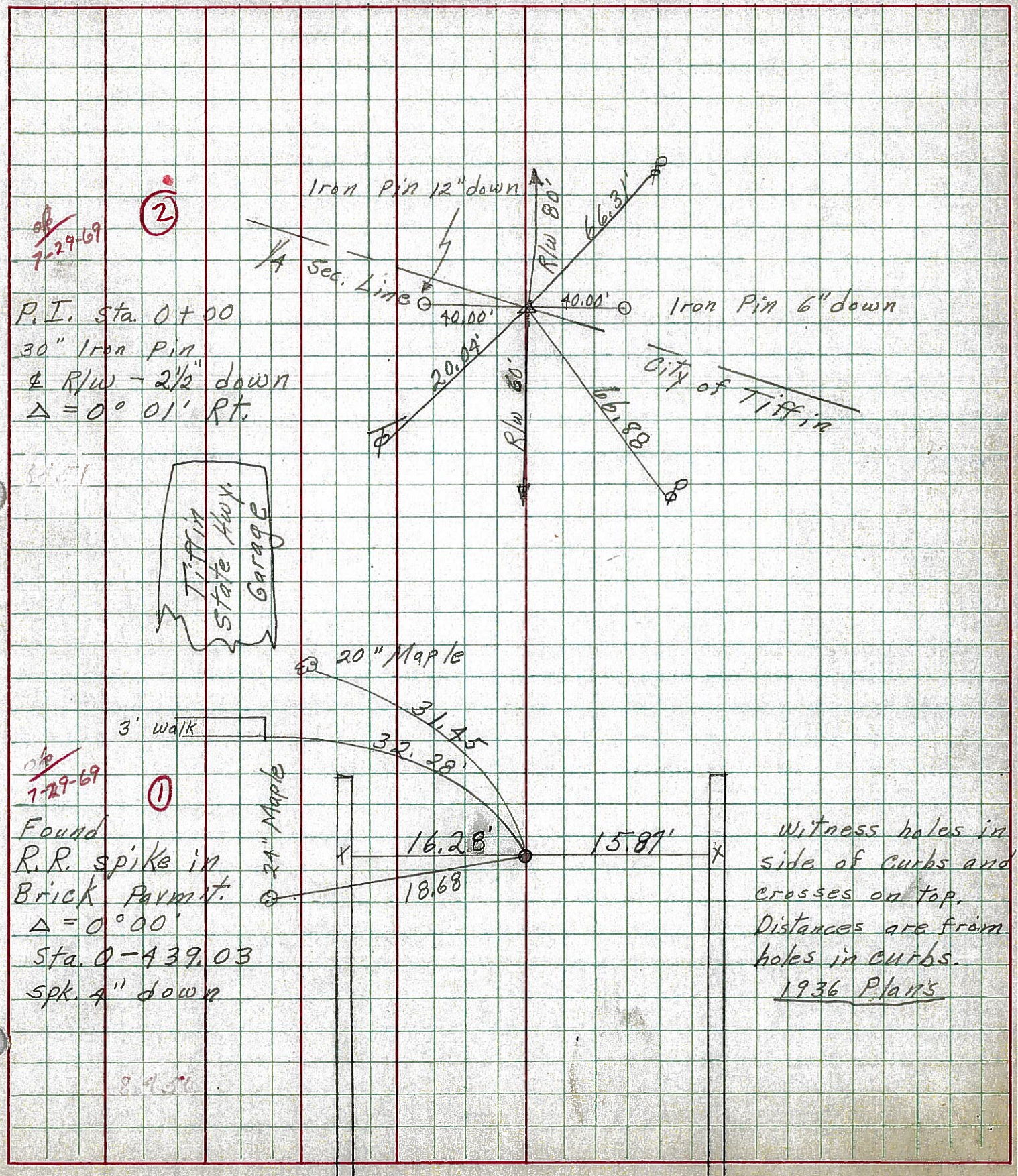
1



R.R. Spk in  
 Brick Pavement 3' walk  
 0-439.03  
 Spk 4" below surface

O.K. 7/29/69  
 \* Witness holes in side of curbs & X's on top.  
 Distances are from holes in curbs  
 1936 Plans

PERSONNEL	TITLE	PERSONNEL	TITLE	COUNTY	DATE
Schneider				Seneca	6-26-68
Barbour				S. R.	101
Redding				Tiffin	WEATHER Cloudy - Rain
				SEC. State Garage	TEMP. 70°
DESCRIPTION	Ties for Control Points			JOB NO.	
	LEFT	CENTER LINE	RIGHT		



Witness holes in side of curbs and crosses on top. Distances are from holes in curbs. 1936 Plans

PERSONNEL TITLE PERSONNEL TITLE

COUNTY Seneca

DATE

Krabill

Kowalecki

Geyman

S. R. # 101

WEATHER

SEC. I-K-O-J

TEMP.

DESCRIPTION S.H. # 271 Tiffin Corp. to Sand. Co. Line

JOB NO.

LEFT

CENTER LINE

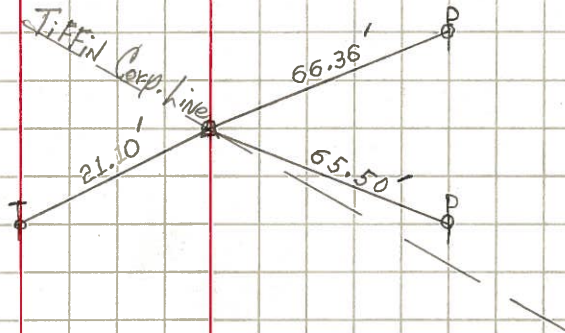
RIGHT

2

STA. 0+00

Iron Pin # 357

2-3-64



3

STA. 3+53.60

Iron Pin # 358

2-3-64

Did Not Find

No Ties

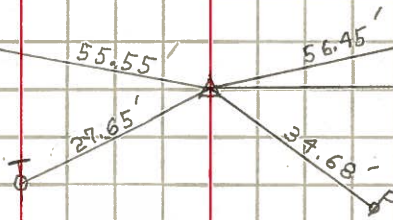
4

STA. 10+00

Iron Pin # 359

2-3-64

Catch Basin



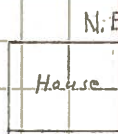
5

STA. 16+00

Iron Pin # 360

2-3-64

Cottonwood



N.E. Cor.

NE. Cor.

