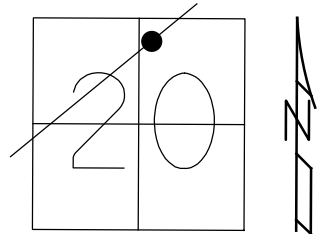


O.D.O.T. DISTRICT 2 SURVEY OFFICE (USE ONLY)

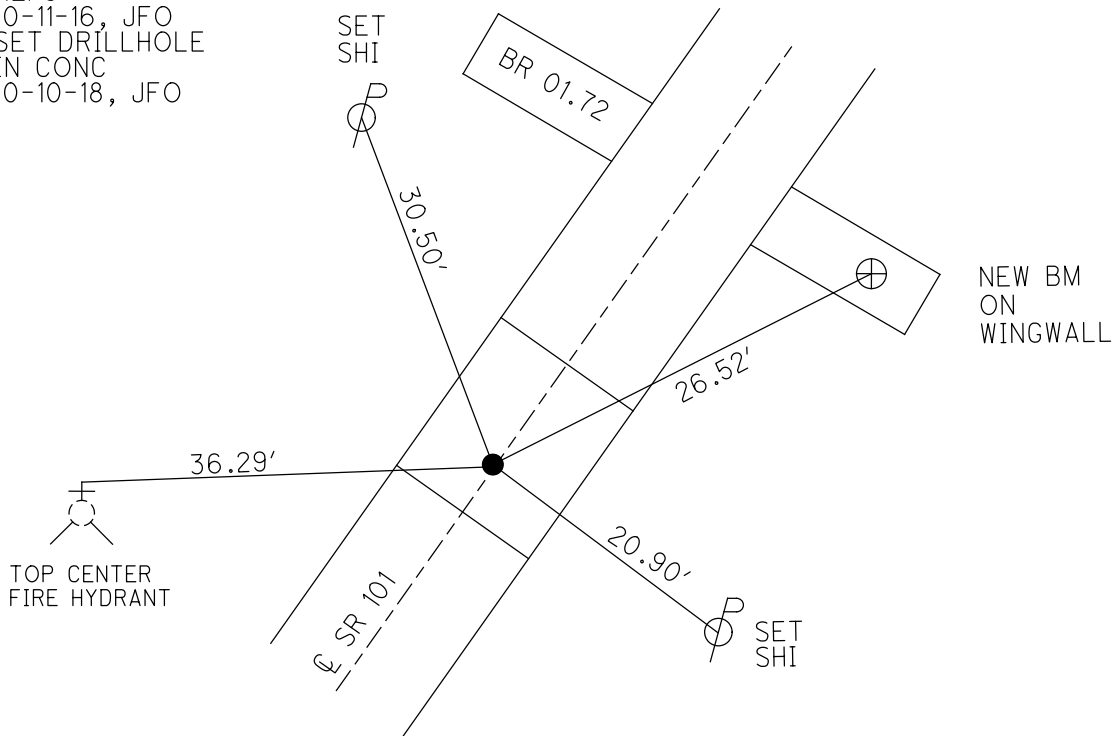
PERSONNEL _____ REFERENCE NO. 3 SHEET 4 OF 27
 NOTES RHOADES DATE 3/15/18 ROUTE SR 101
 H.C. O'DONNELL WEATHER SUNNY COUNTY SENECA
 R.C. SEAMAN TEMP. 32° TOWNSHIP CLINTON
 DWG BY MILLER PID 102817 SECTION 20
 T 2 N R 15 E

TYPE MONUMENT HOLE IN CONC APPROACH SLAB
 ON SURFACE - ~~BELOW~~ _____ ON _____
 OFFSET ☐ PAVEMENT _____ ON _____ ~~LT~~ : ~~RT~~
10.2' TO RT EDGE PAVEMENT
 STATION: 89+22.4



HORZ. DATUM: NAD83 2011 GEOID: 2012A NAVD88
 GRID: NORTHING: 531424.567 EASTING: 1787013.443

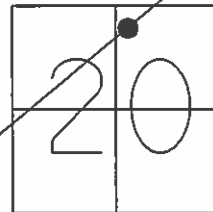
RECORD :
 1925 PLAN
 STA. 3+53.6
 FD IPIN ON ☐ R/W
 14" BELOW
 7-29-69
 SET MAG/WASHER
 9-30-08, DCH
 FD HOLE IN CONC
 REF3
 10-11-16, JFO
 SET DRILLHOLE
 IN CONC
 10-10-18, JFO



O.D.O.T. DISTRICT 2 SURVEY OFFICE (USE ONLY)

PERSONNEL _____ REFERENCE NO. 3 SHEET 4 OF 27
 NOTES HOMAN _____ DATE 6/23/08 ROUTE SR 101
 H.C. ROUSOS _____ WEATHER SUNNY COUNTY SENECA
 R.C. HOMAN _____ TEMP. 65° TOWNSHIP CLINTON
 _____ SECTION 20
 _____ T 2 N R 15 E

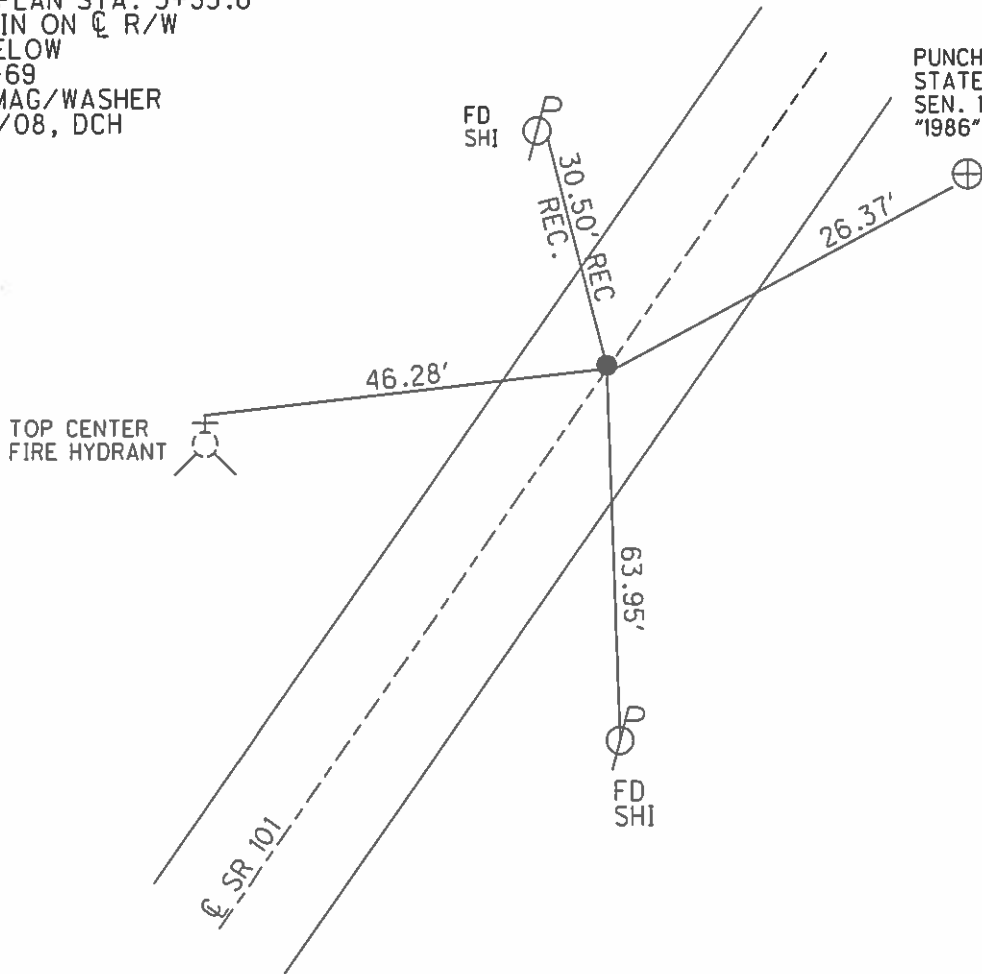
TYPE MONUMENT HOLE IN CONC. APPROACH SLAB
 ON SURFACE - ~~BELOW~~ ON _____
 LEFT - ℄ PAV'T - RIGHT ON _____
10.2' TO E EDGE PAVEMENT
 S.L.M. 89+23



GRID: NORTHING: 531424.634 EASTING: 1787013.404

RECORD :
 1925 PLAN STA. 3+53.6
 FD IPIN ON ℄ R/W
 14" BELOW
 7-29-69
 SET MAG/WASHER
 9/30/08, DCH

PUNCH HOLE ON
 STATE B.M. DISK
 SEN. 101-0172
 "1986" ELEV. 749.20



O.D.O.T. DISTRICT 2 SURVEY OFFICE

PERSONNEL

REFERENCE NO. 3

SHEET 4 OF 26

NOTES Cheney

H.C. RIPPLE

R.C. BARBOUR

Geyman

DATE 7-9-92

WEATHER Sunny

TEMP. 60°

ROUTE SR# 101

COUNTY Seneca

TOWNSHIP CLINTON

SECTION 20

T 2 N R 15 E

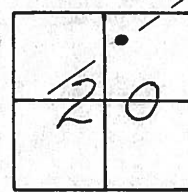
TYPE MONUMENT Could Not Set Because Conc. App. Slab

ON SURFACE - BELOW _____

LEFT- & PAV'T. - RIGHT _____

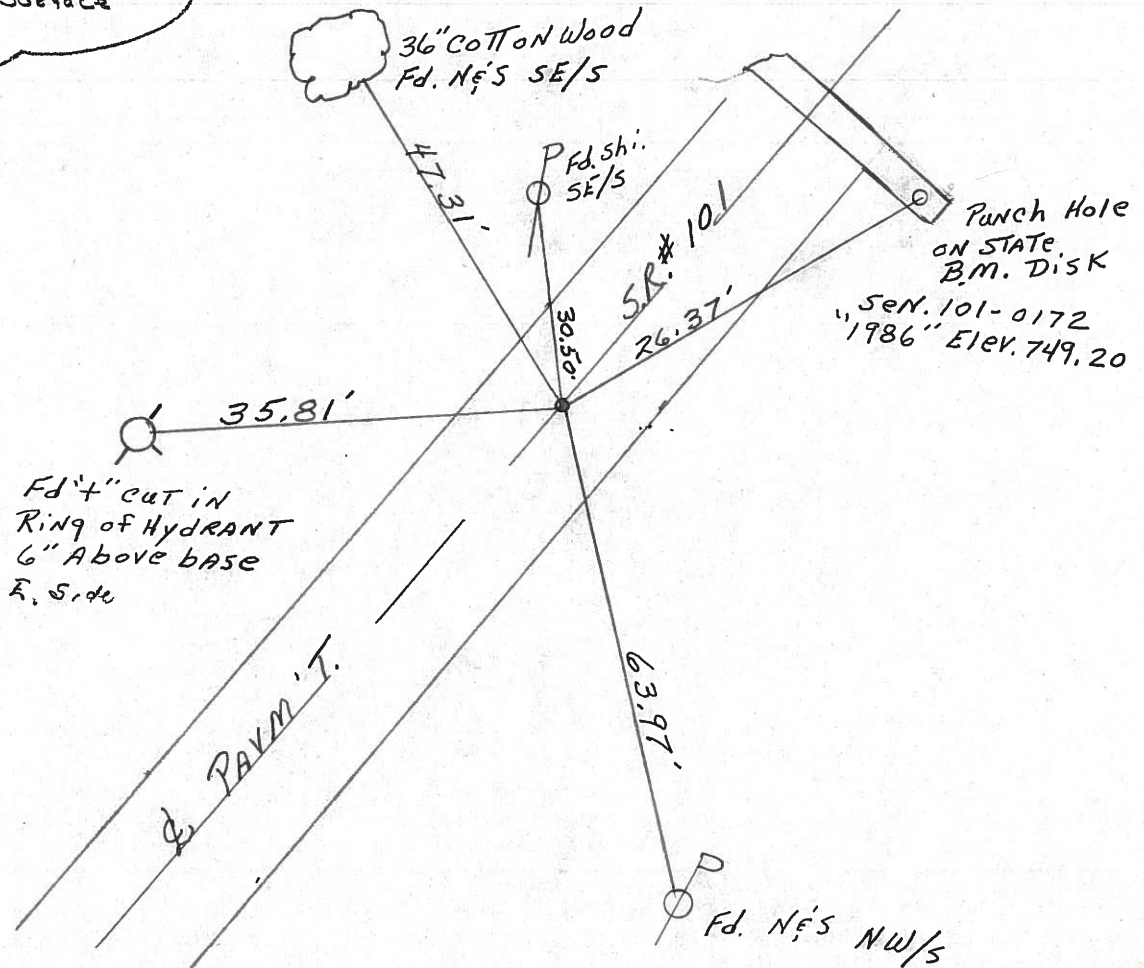
10.2' TO E. EDGE PAVEMENT

? S.L.M.? 894 + 23 ?



Note: Record
1925 PLAN STA. 3+53.6
Fd I. PIN ON & R/W
14" Below Surface
7-29-69

PREVIOUS SLM = 90+61.44



County SENECA S.R. 101

Date FEB 17, 83

Township CLINTON

Weather OVERCAST

Section 20

Temp. +35°

T N, R E

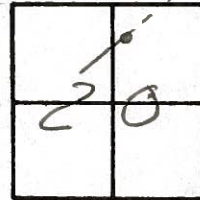
Personnel HOFFMAN

HOUSEHOLDER

LOERKE

BARNHISEL

~~4~~ (3)



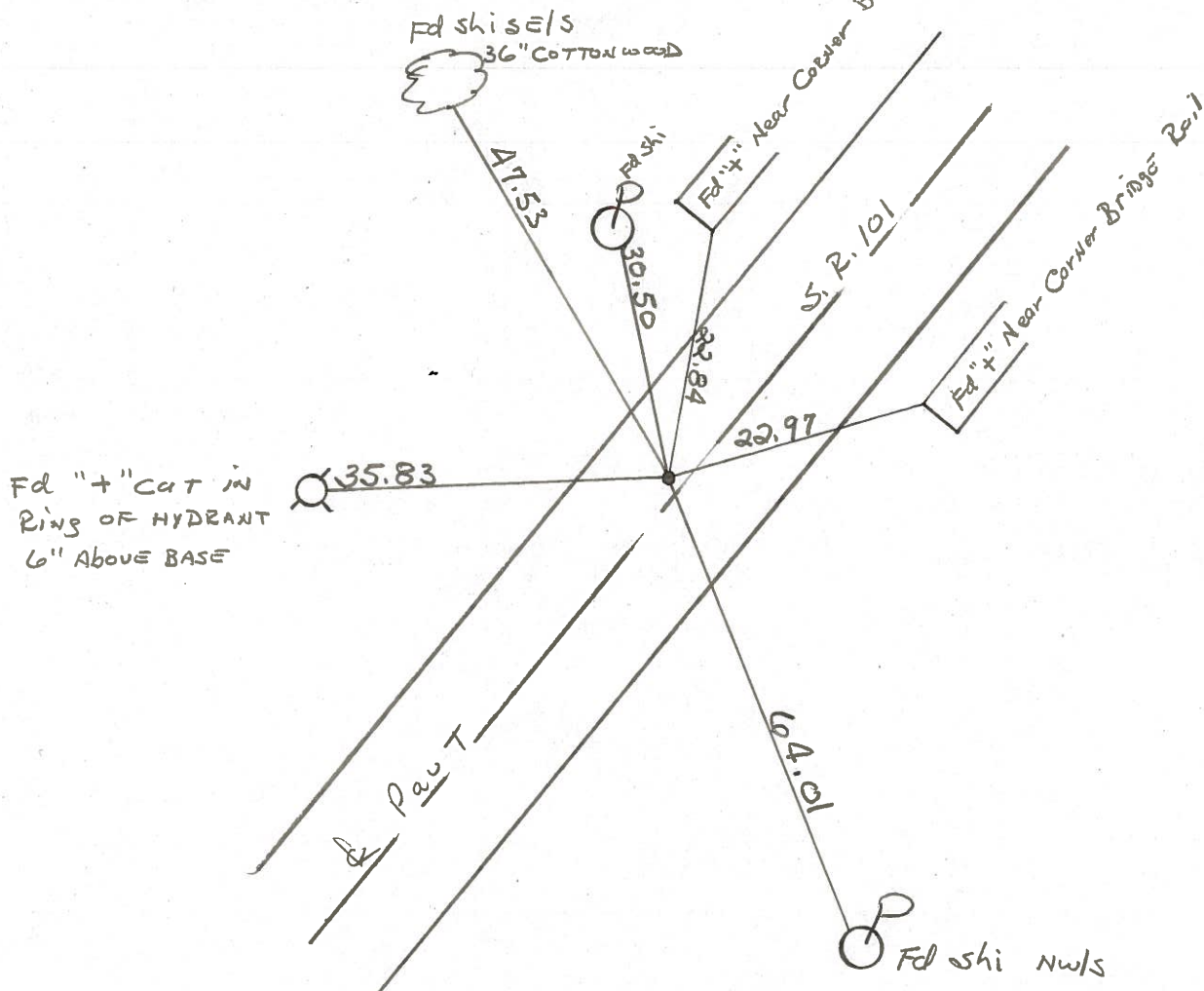
Fd P. K/WASHER @ SURFACE

S.L.M. 90+61.44

1925 PLAN STA 3+53.6

1.0' LT. of & PAUT

10.2' TO. E.E.P.



PERSONNEL TITLE PERSONNEL TITLE

SHEET NO. 1

Cronin

COUNTY Seneca

DATE 3/4/70

Ripple

S. R. #101 (S.H. #271)

WEATHER

Geyman

SEC. I-K-O-J

TEMP.

Anderson

DESCRIPTION Ties for Control Points - Tiffin Corp. to Sandusky Co. Line

JOB NO.

LEFT

CENTER LINE

RIGHT

3

3753.6

Iron Pin on E R/W
14" below surface
Fd. 7/29/69

36" Cottonwood

Sen. 101-0112 Br. Rail End Posts

Fire Hydrant cut in ring 6" above base

O.K. 2/25/71

2

$\Delta = 0^\circ 01' \text{ Rt.}$
P.I.

0+00

30" Iron pin on E R/W
2 1/2" below surface

1/2 sec. line

O.K. 7/29/69

O.K. 2/25/71

Iron pin 12" down

14" Maple

Iron pin 6" down

Tiffin Corp.

1

R.R. Spk in

Brick Pavement

0-439.03

Spk 4" below surface

20" Maple

3' walk

24" Maple

O.K. 7/29/69

* Witness holes in side of curbs & X's on top.

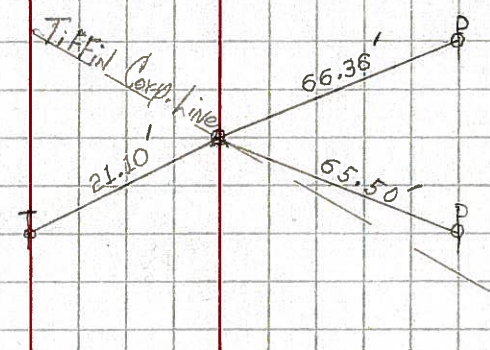
Distances are from holes in curbs

1936 Plans

PERSONNEL TITLE PERSONNEL TITLE COUNTY Seneca DATE
 Krabill _____
 Kowaleski _____ S. R. # 101 WEATHER
 Geyman _____
 SEC. I-K-O-J TEMP
 DESCRIPTION S.H. # 271 Tiffin Corp. to Sand. Co. Line JOB NO.
 LEFT CENTER LINE RIGHT

2

STA. 0+00
 Iron Pin # 357
 2-3-64



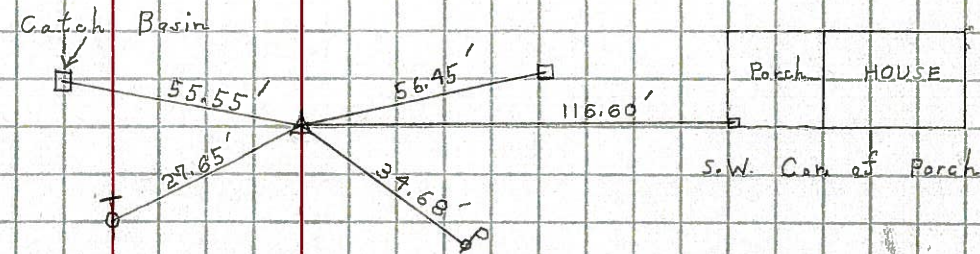
3

STA. 3+53.60
 Iron Pin # 358
 2-3-64

Did Not Find
 No Ties

4

STA. 10+00
 Iron Pin # 359
 2-3-64



5

STA. 16+00
 Iron Pin # 360
 2-3-64

