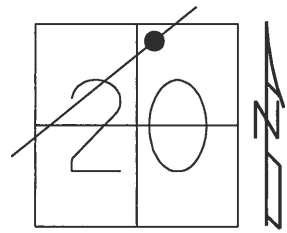


O.D.O.T. DISTRICT 2 SURVEY OFFICE (USE ONLY)

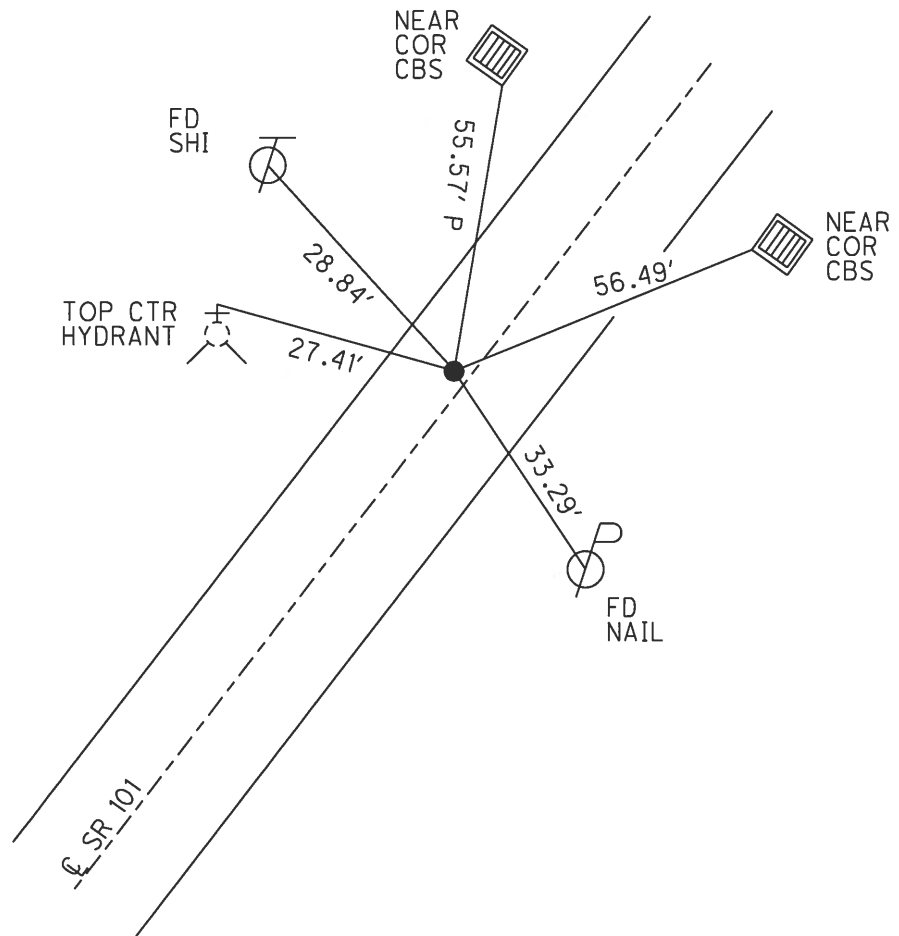
PERSONNEL _____ REFERENCE NO. 4 SHEET 5 OF 27
 NOTES RHOADES DATE 3/15/18 ROUTE SR 101
 H.C. O'DONNELL WEATHER SUNNY COUNTY SENECA
 R.C. SEAMAN TEMP. 32° TOWNSHIP CLINTON
 DWG BY JAMES PID 102817 SECTION 20
 T 2 N R 20 E

TYPE MONUMENT _____ MAG/WASHER
 ON SURFACE - ~~BELOW~~ ON _____
 OFFSET \odot PAVEMENT 1.5' LT : ~~RT~~
10.2' TO RT EDGE PAVEMENT
 STATION: 95+18.3



HORZ. DATUM: NAD83 2011 GEOID: 2012A NAVD88
 GRID: NORTHING: 531855.530 EASTING: 1787494.627

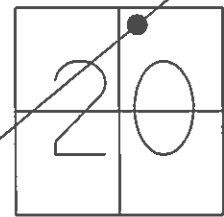
RECORD:
 1925 PLAN
 STA. 10+00
 FD IPIN
 2" DOWN
 3-4-70
 FD P.K./WASHER
 6/23/08, DCH
 FD MAG/WASHER
 REF 4
 10-11-16, JFO
 SET MAG/WASHER
 10-10-18, JFO



O.D.O.T. DISTRICT 2 SURVEY OFFICE (USE ONLY)

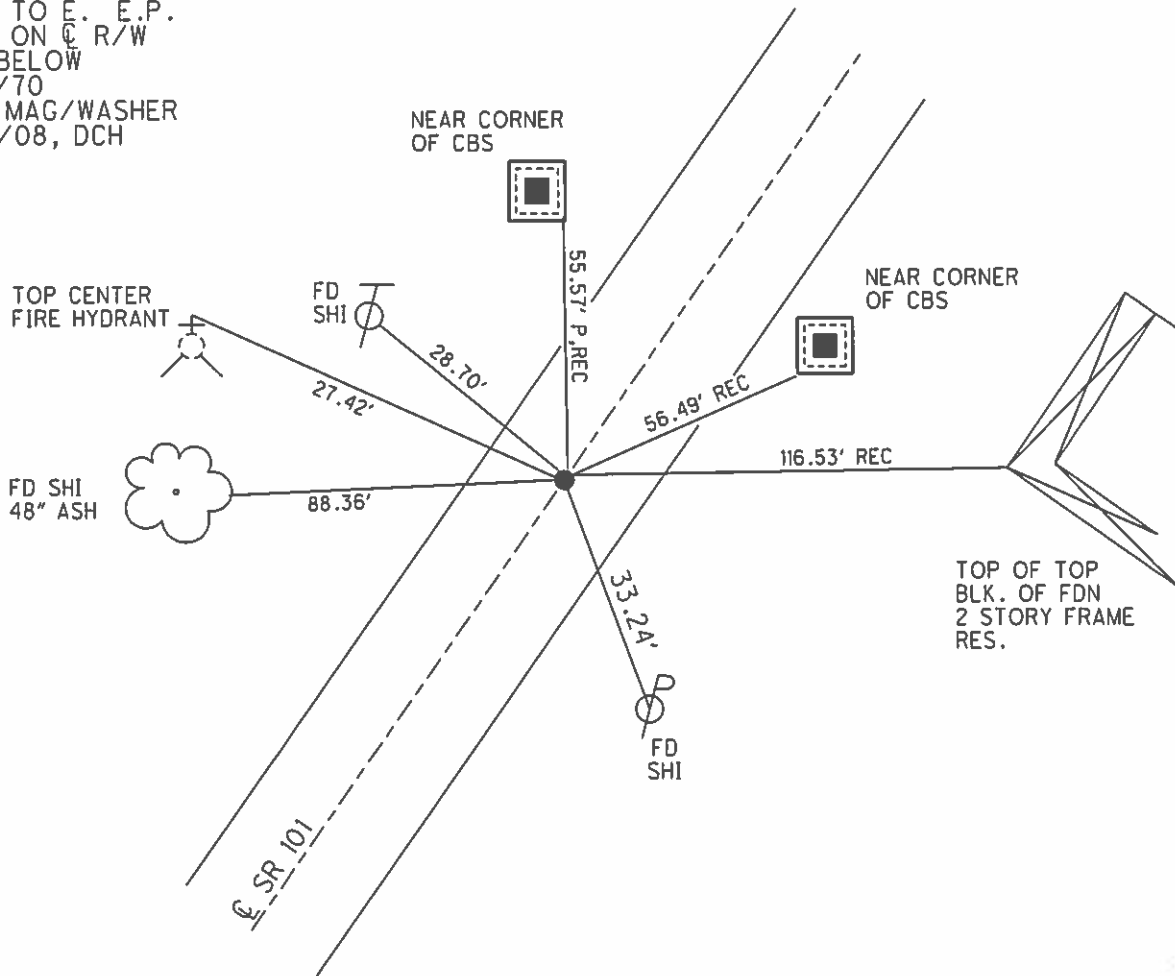
PERSONNEL _____ REFERENCE NO. 4 SHEET 5 OF 27
 NOTES HOMAN _____ DATE 6/23/08 ROUTE SR 101
 H.C. ROUSOS _____ WEATHER SUNNY COUNTY SENECA
 R.C. HOMAN _____ TEMP. 70° TOWNSHIP CLINTON
 _____ SECTION 20
 _____ T 2 N R 15 E

TYPE MONUMENT P.K./WASHER
 ON SURFACE - ~~BELOW~~ ON _____
 LEFT - ☉ PAV'T - ~~RIGHT~~ 1.5'
10.2' TO E EDGE PAVEMENT
 S.L.M. 95+70



GRID: NORTHING: 531855.558 EASTING: 1787494.578

RECORD:
 1925 PLAN
 STA. 10+00
 11.4' TO E. E.P.
 IPIN ON ☉ R/W
 2" BELOW
 3/4/70
 SET MAG/WASHER
 10/1/08, DCH



O.D.O.T. DISTRICT 2 SURVEY OFFICE

PERSONNEL

REFERENCE NO. 4

SHEET 4 OF 26

NOTES CHENEY

H.C. RIPPLE

R.C. BARBOUR

GEYMAN

DATE 7-9-92

WEATHER SUNNY

TEMP. 60°

ROUTE SR#101

COUNTY SENECA

TOWNSHIP CLINTON

SECTION 20

T.2 N. R.15 E

TYPE MONUMENT P.K./WASHER

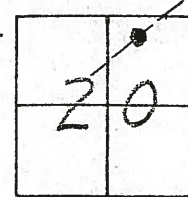
ON SURFACE - ~~BELOW~~ yes

LEFT- & PAVM'T. - ~~RIGHT~~ 1.5'

8.7 TO W. EDGE PAVEMENT

S.L.M. 95+70

Set PK/washer
9-30-92



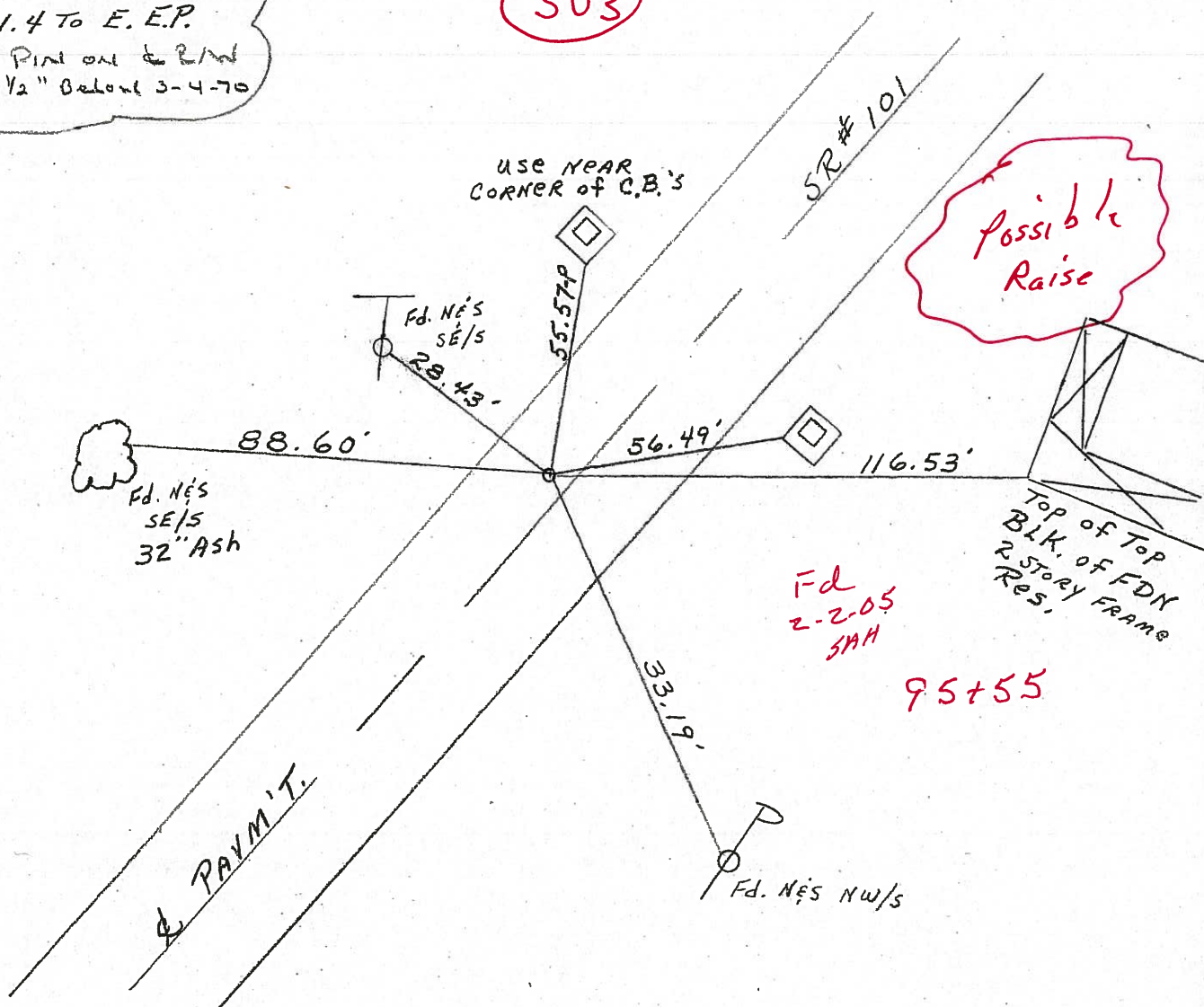
Record:

1925 PLAN 10+00
11.4 TO E.E.P.

I. PINT ON & R/W
2 1/2" Below 3-4-70

4-14-06

SU3



O.D.O.T. DISTRICT 2 SURVEY OFFICE

PERSONNEL

REFERENCE NO. 4

SHEET 5 OF 26

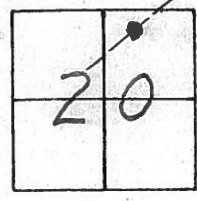
NOTES CHENEY
 H.C. RIPPLE
 R.C. BARBOUR
GEYMAN

DATE 7-9-92
 WEATHER SUNNY
 TEMP. 60°

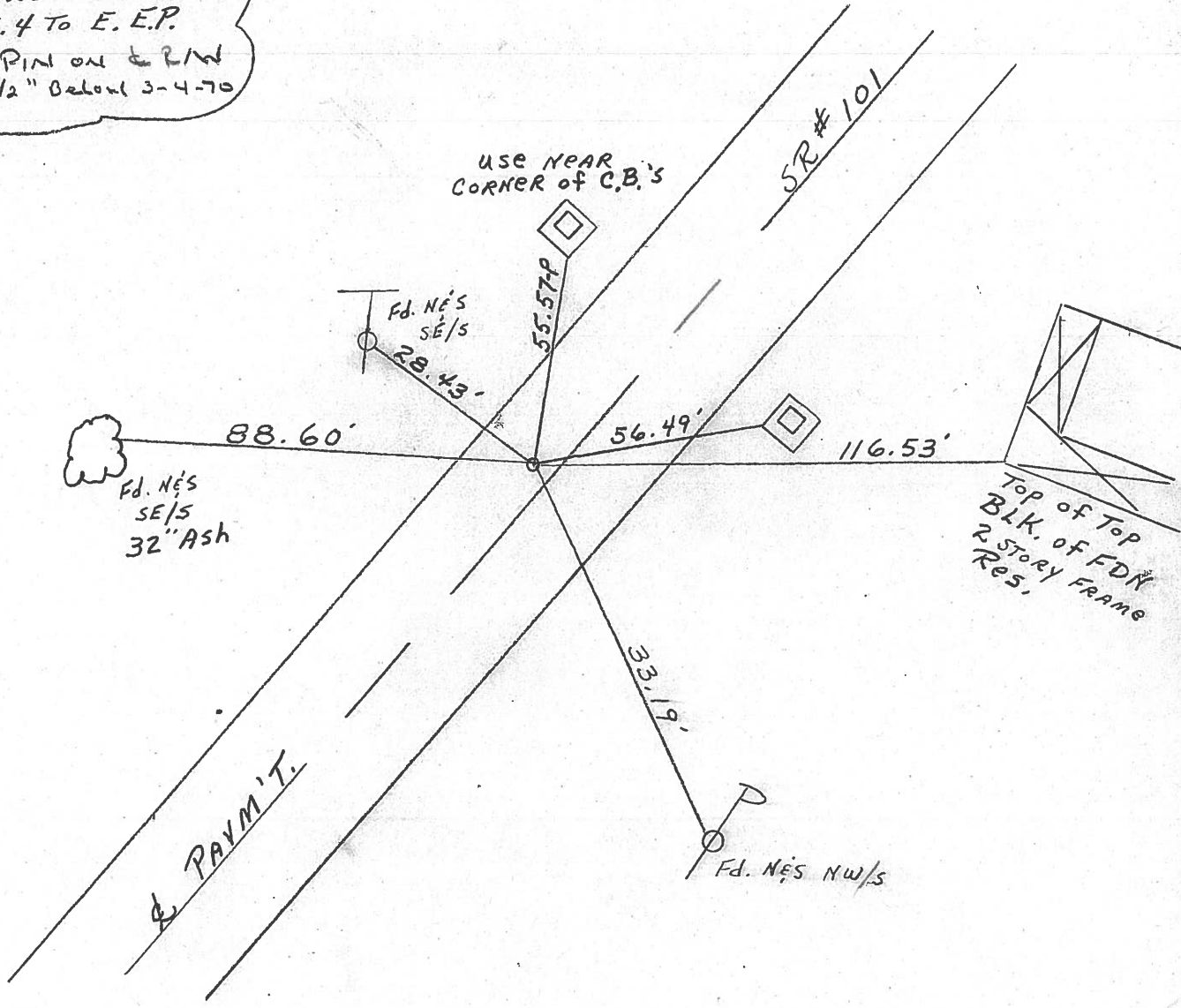
ROUTE SR#101
 COUNTY SENECA
 TOWNSHIP CLINTON
 SECTION 20
T 2 N R 15 E

TYPE MONUMENT P.K./WASHER
 ON SURFACE - ~~BELOW~~ yes
 LEFT- & PAVM'T. - ~~RIGHT~~ 1.5'
8.7 TO W. EDGE PAVEMENT
 S.L.M. 95+70

Set PK/washer
9-30-92



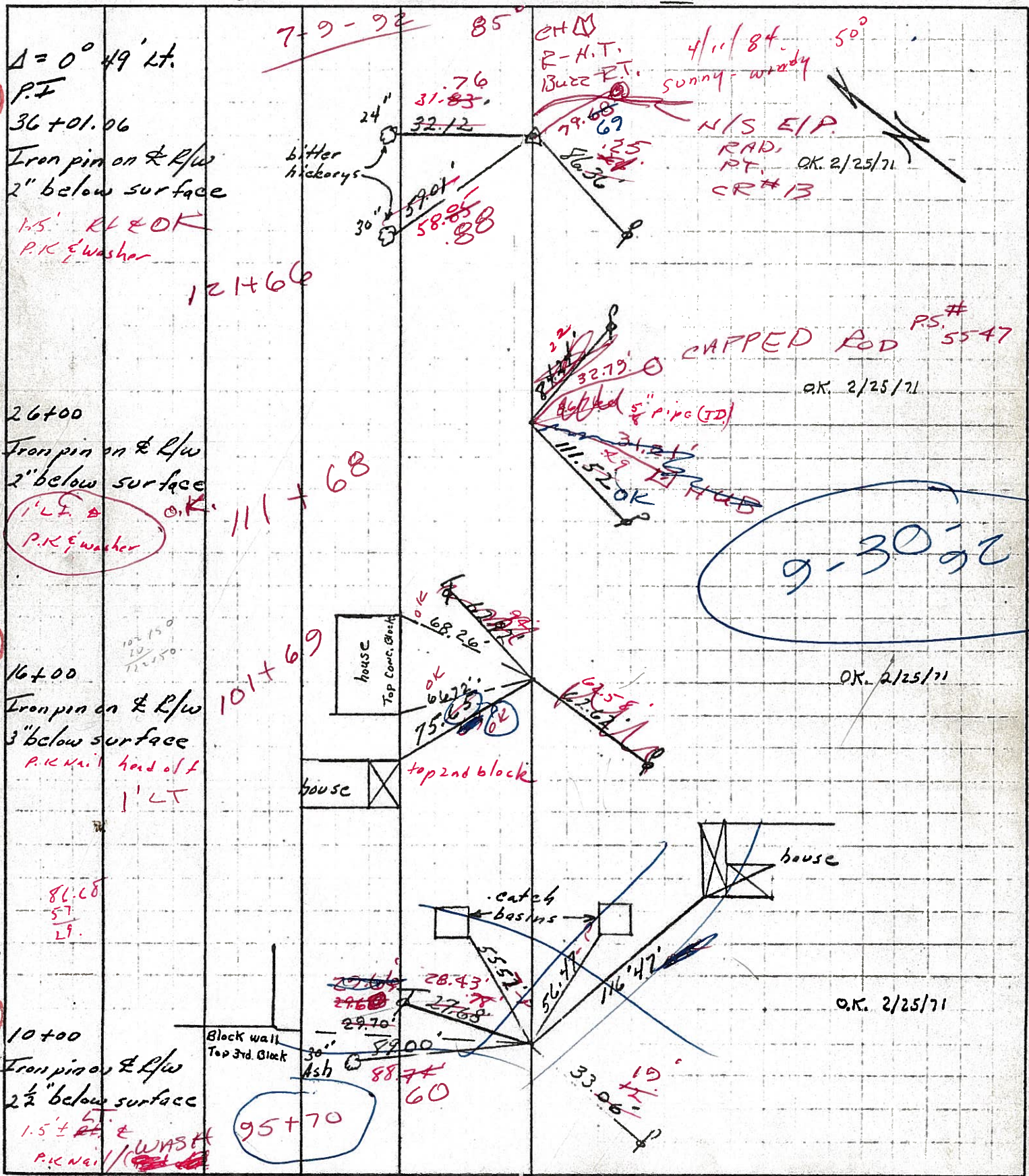
Record:
 1925 PLAN 10+00
 11.4 TO E.E.P.
 I. PIN ON & R/W
 2 1/2" Below 3-4-70



PERSONNEL TITLE PERSONNEL TITLE
 Cronin _____
 Ripple _____
 Geyman _____
 Anderson _____

COUNTY Seneca DATE 3/4/70
 S. R. #101 (I.C.H. #271) WEATHER _____
 SEC. I-K-O-J TEMP. _____

DESCRIPTION Ties for Control Points - Tiffin Corp. + Sand Co. Line JOB NO. _____



Q.D.O.T. DISTRICT 2 SURVEY OFFICE

SHEET _____ OF _____

County SENECA S.R. 101

Date FEB 17, 83

Township CLINTON

Weather OVERCAST

Section 20

Temp. +35°

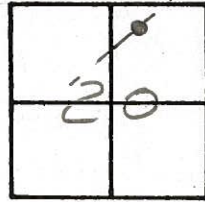
T N, R E

Personnel HOFFMAN

HOUSEHOLDER

LOHRKE

BARNHISEL



~~5A~~ (4)

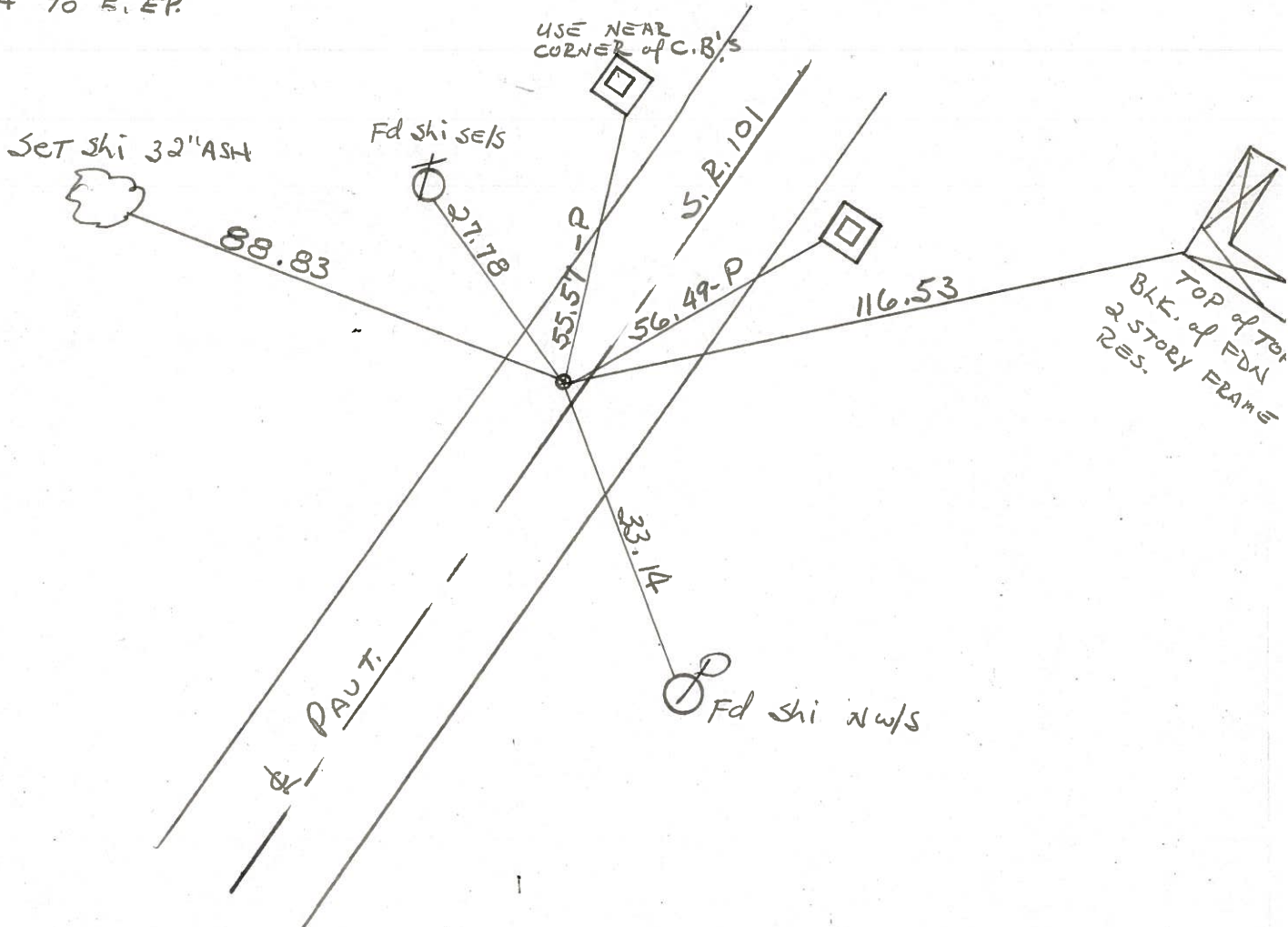
Fd P.K./WASHER @ SURFACE

1925 PLAN 10+00

1.5 LT. of & PAUT

8.7 TO W.E.P.

11.4 TO E.E.P.

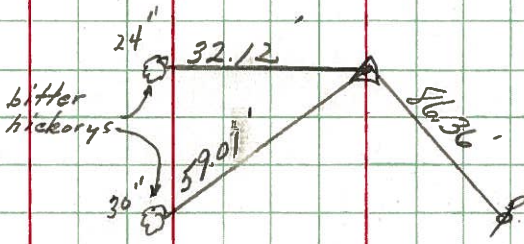


PERSONNEL TITLE PERSONNEL TITLE COUNTY Seneca DATE 3/4/70
Cronin _____
Ripple _____ S. R. #101 (I.C.H. #271) WEATHER _____
Geyman _____
Anderson _____ SEC. I-K-O-J TEMP. _____

DESCRIPTION Ties for Control Points - Tiffin Corp. to Sand Co. Line JOB NO. _____
 LEFT CENTER LINE RIGHT

7

$\Delta = 0^\circ 49' \text{ Lt.}$
 P.I. ~~15~~
 36+01.06
 Iron pin on \pm R/w
 2" below surface



OK 2/25/71

6

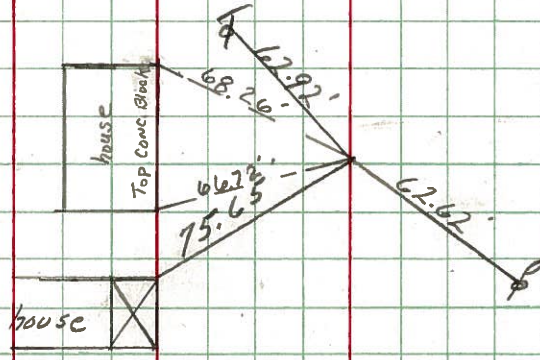
~~14~~
 26+00
 Iron pin on \pm R/w
 2" below surface



OK 2/25/71

5

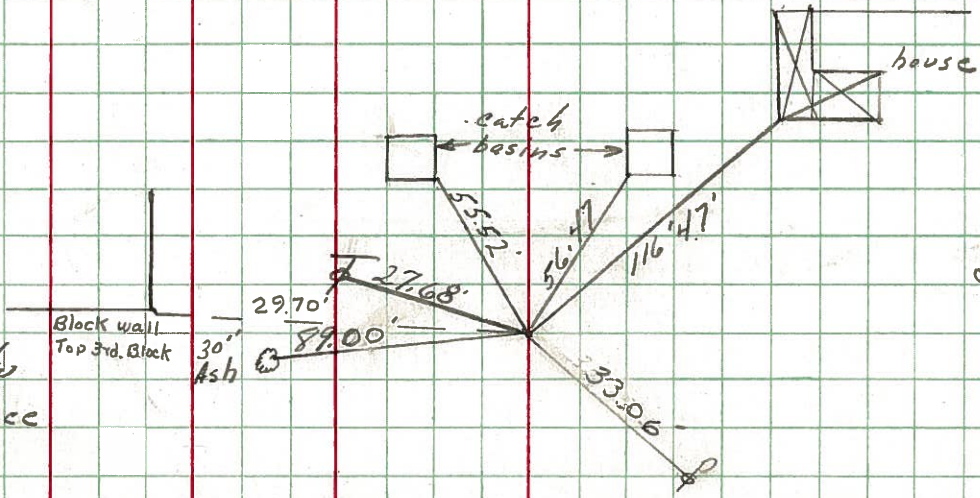
~~13~~
 16+00
 Iron pin on \pm R/w
 3" below surface



OK 2/25/71

4

~~12~~
 10+00
 Iron pin on \pm R/w
 2 1/2" below surface



OK 2/25/71

PERSONNEL	TITLE	PERSONNEL	TITLE
<u>Cronin</u>			
<u>Ripple</u>			
<u>Geyman</u>			
<u>Anderson</u>			

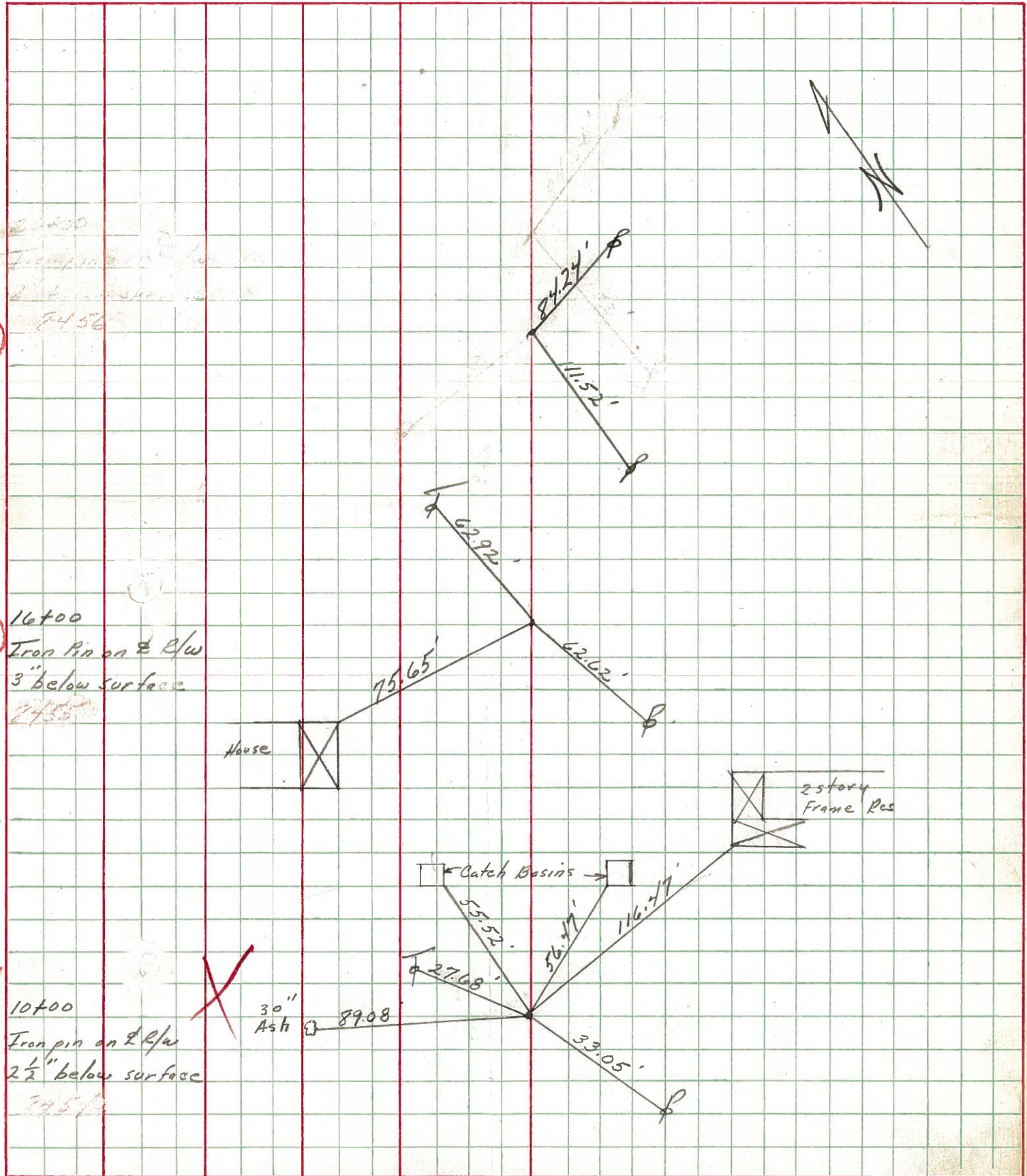
COUNTY Seneca DATE 3/4/70

S. R. #101 (S.H. #271) WEATHER _____

SEC. I-K-O-J. TEMP. _____

DESCRIPTION Ties for Control Points - Tiffin Corp. to Sandusky Co. Line JOB NO. _____

LEFT CENTER LINE RIGHT



PERSONNEL TITLE PERSONNEL TITLE

Krabill
Kowalecki
Geyman

COUNTY Seneca

DATE

S. R. # 101

WEATHER

SEC. I - K - O - J

TEMP.

DESCRIPTION S.H. # 271 Tiffin Corp. to Sand. Co. Line

JOB NO.

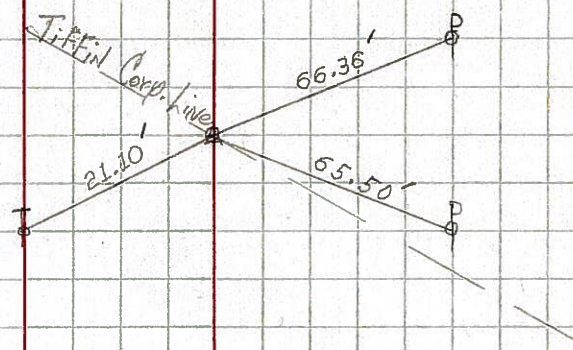
LEFT

CENTER LINE

RIGHT

2

STA. 0+00
Iron Pin # 357
2-3-64



3

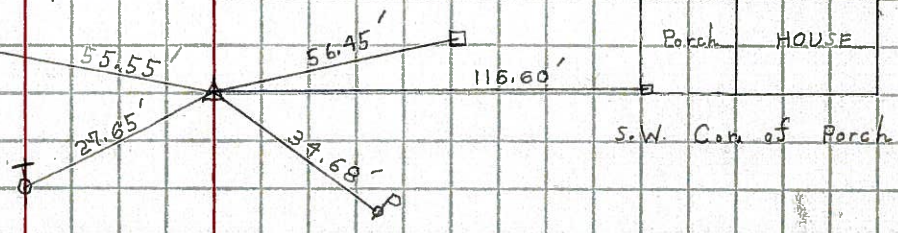
STA. 3+53.60
Iron Pin # 358
2-3-64

Did Not Find
No Ties

4

STA. 10+00
Iron Pin # 359
2-3-64

Catch Basin



5

STA. 16+00
Iron Pin # 360
2-3-64

