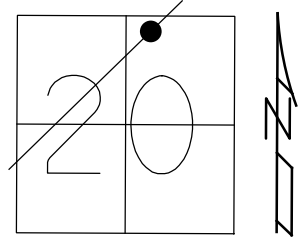


O.D.O.T. DISTRICT 2 SURVEY OFFICE (USE ONLY)

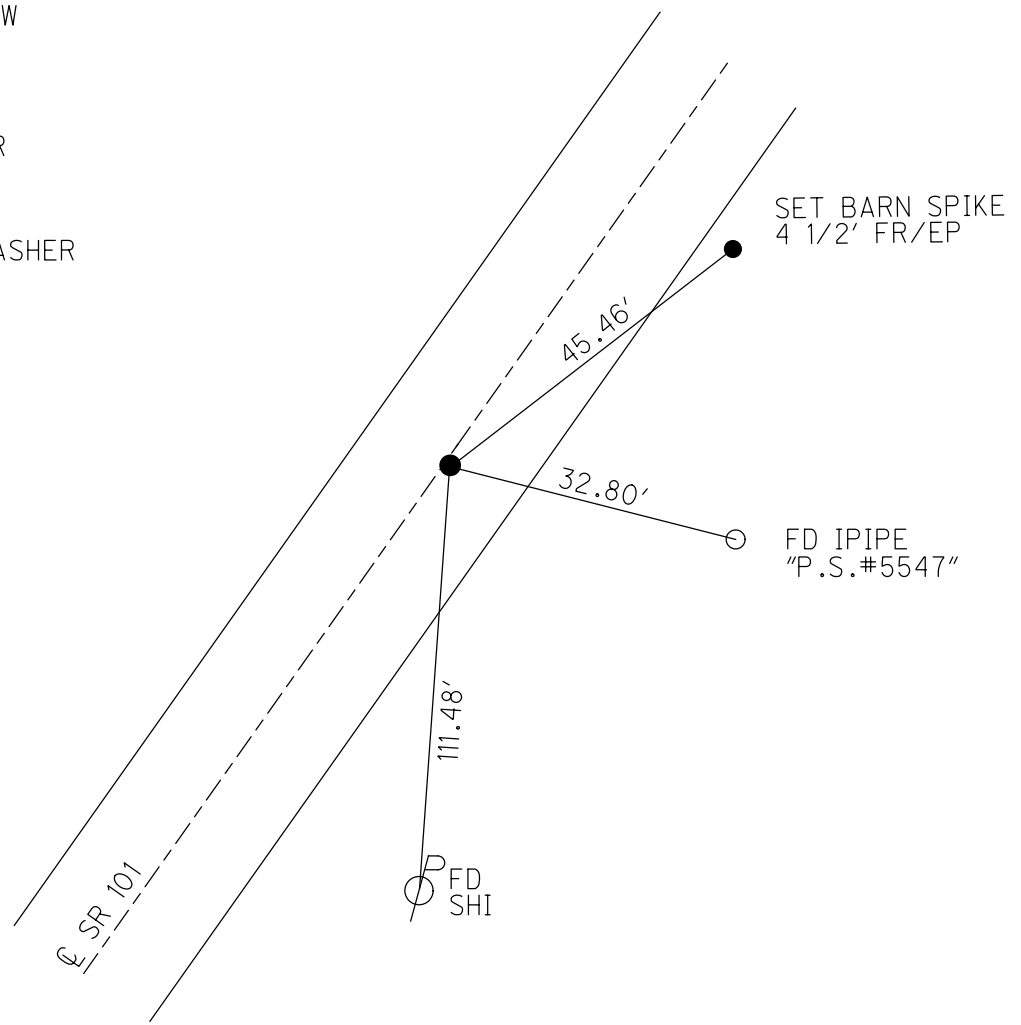
| | | |
|-----------------------|------------------------|-----------------------------|
| PERSONNEL | REFERENCE NO. <u>6</u> | SHEET <u>7</u> OF <u>27</u> |
| NOTES RHOADES | DATE <u>3/15/18</u> | ROUTE <u>SR 101</u> |
| H.C. <u>O'DONNELL</u> | WEATHER <u>SUNNY</u> | COUNTY <u>SENECA</u> |
| R.C. <u>SEAMAN</u> | TEMP. <u>32°</u> | TOWNSHIP <u>CLINTON</u> |
| | | SECTION <u>20</u> |
| DWG BY <u>MILLER</u> | PID <u>102817</u> | T <u>2</u> N R <u>15</u> E |

TYPE MONUMENT MAG/WASHER
 ON SURFACE - ~~BELOW~~ ON
 OFFSET 0.5' LT : ~~RT~~
10.8 TO RT EDGE PAVEMENT
 STATION: 111+68



HORIZ. DATUM: NAD83 2011 GEOID: 2012A NAVD88
 GRID: NORTHING: 532928.851 EASTING: 1788680.794

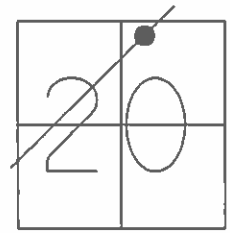
RECORD:
 SLM. 26+00
 FD IPIN ON CL R/W
 2" BELOW
 3-4-70
 FD P.K./WASHER
 6/23/08, DCH
 SET P.K./WASHER
 9-30-92
 SET MAG/WASHER
 9-30-08, DCH
 FD P.K.SHANK/WASHER
 REF6
 10-11-16, JFO
 MONBOX INSTALL
 FD MONBOX
 W/1" IPIN
 NEWREF6
 11-2-18, JFO



O.D.O.T. DISTRICT 2 SURVEY OFFICE (USE ONLY)

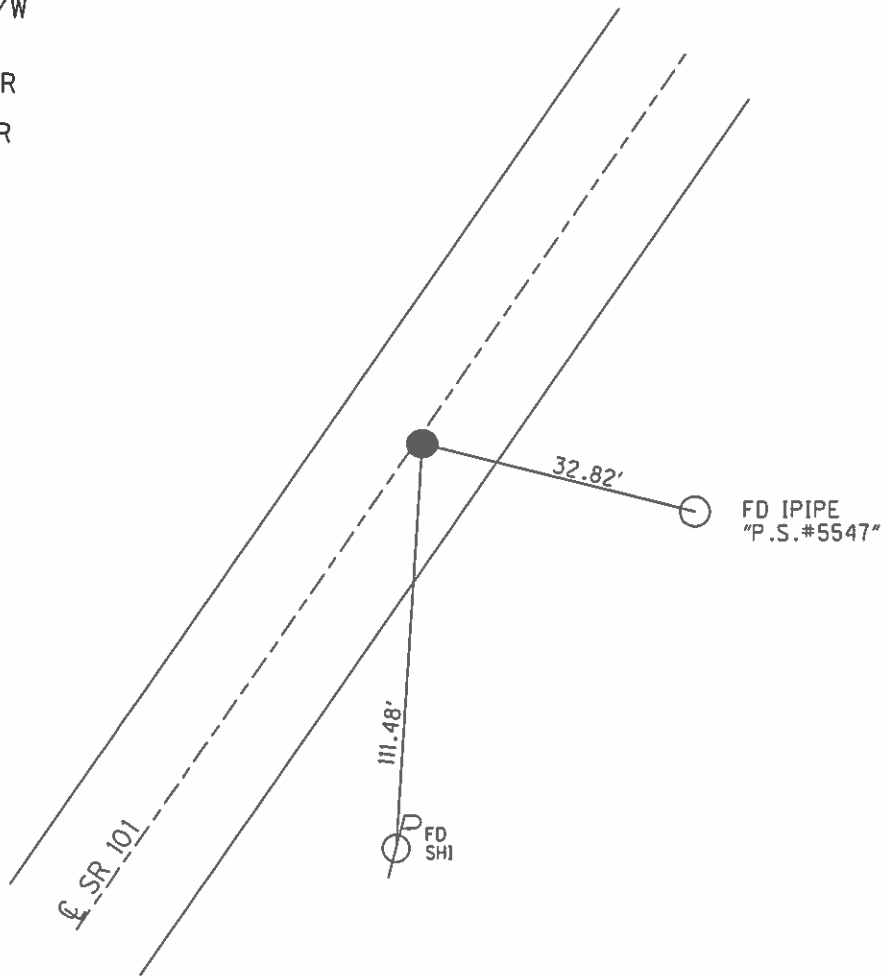
PERSONNEL _____ REFERENCE NO. 6 SHEET 7 OF 27
 NOTES HOMAN DATE 6-23-08 ROUTE SR 101
 H.C. ROUSOS WEATHER SUNNY COUNTY SENECA
 R.C. HOMAN TEMP. 70° TOWNSHIP CLINTON
 _____ SECTION 20
 _____ T 2 N R 15 E

TYPE MONUMENT P.K./WASHER
 ON SURFACE - ~~BELOW~~ ON
 LEFT - ☉ PAV'T - ~~RIGHT~~ 0.5'
10.8 TO RT EDGE PAVEMENT
 S.L.M. 111+56



GRID: NORTHING: 532928.896 EASTING: 1788680.691

RECORD:
 SLM. 26+00
 FD IPIN ON ☉ R/W
 2" BELOW
 3-4-70
 SET P.K./WASHER
 9/30/92
 SET MAG/WASHER
 9/30/08, DCH



O.D.O.T. DISTRICT 2 SURVEY OFFICE

PERSONNEL

REFERENCE NO. 6

SHEET 7 OF 27

NOTES CHENEY

DATE 7/9/92

ROUTE SR 101

H.C. RIPPLE

WEATHER SUNNY

COUNTY SENECA

R.C. BARBOUR

TEMP. 60°

TOWNSHIP CLINTON

SECTION 20

T 2 N R 15 E

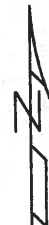
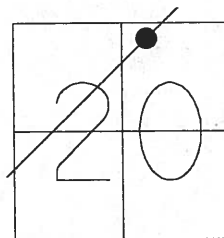
TYPE MONUMENT P.K./WASHER

ON SURFACE - ~~BELOW~~ ON

LEFT - ~~C PAV'T~~ = RIGHT 1'

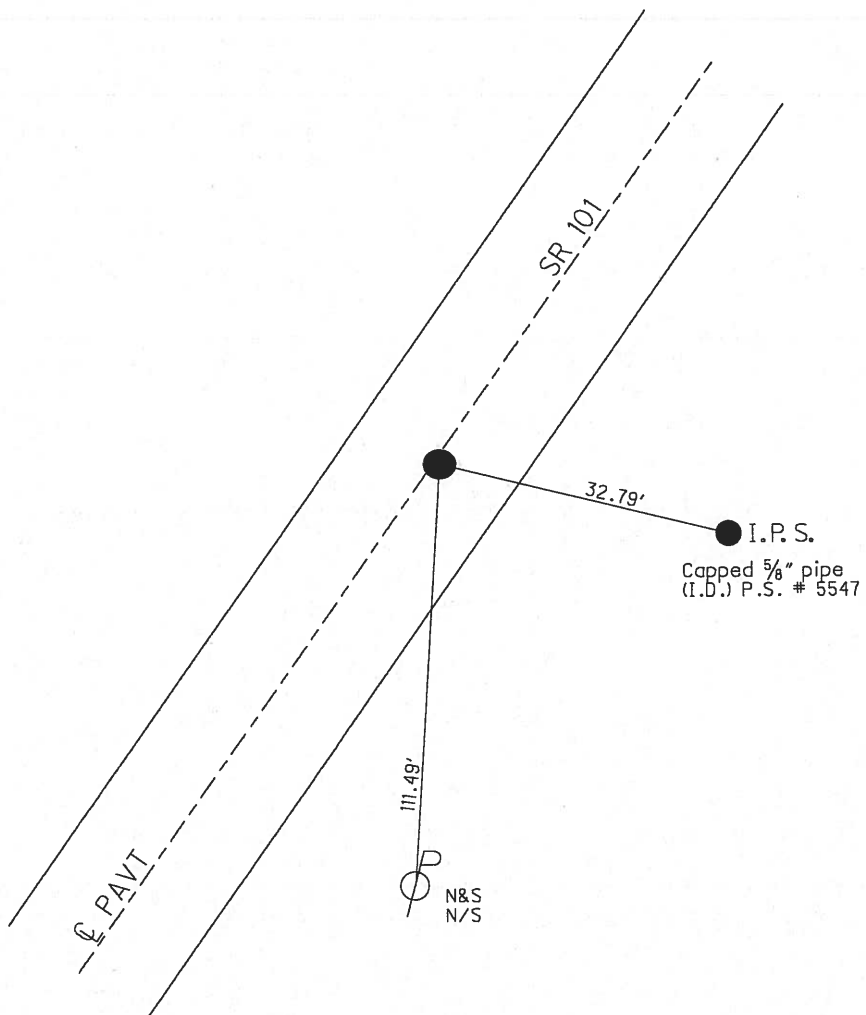
10.8 TO RT EDGE PAVEMENT

S.L.M. 111+68



Record:
26+00
Fd. Iron pin on C.L. R/W
2" Below Surface
3-4-70

SET P.K./WASHER
9/30/92



O.D.O.T. DISTRICT 2 SURVEY OFFICE

PERSONNEL

REFERENCE NO. 6

SHEET 6 OF 26

NOTES CHENEY

H.C. RIPPLE

R.C. BARBOUR

GeyMAN

DATE 7-9-92

WEATHER SUNNY

TEMP. 60°

ROUTE S.R.#101

COUNTY SENECA

TOWNSHIP CLINTON

SECTION 20

T2 N R 15 E

TYPE MONUMENT P.K./washer

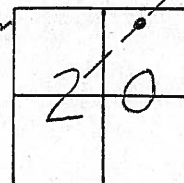
ON SURFACE - BELOW yes

LEFT- & PAV'T. - RIGHT 1'

10.8 TO RT. EDGE PAVEMENT

S.L.M. 111+68

Set P.K./washer
9-30-92



Records:

26 +00

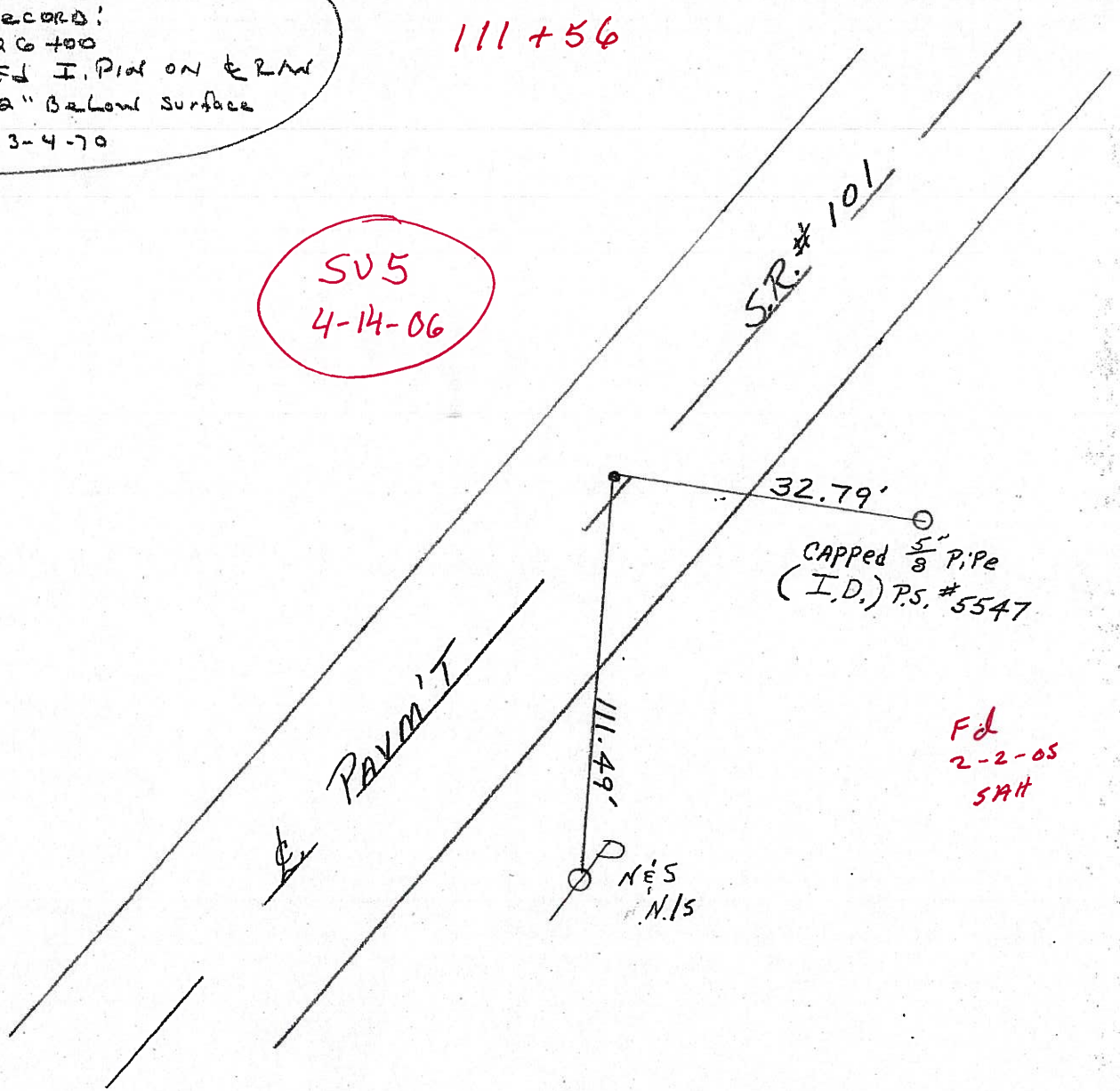
Fd I. Plat on & PAV

2" Below surface

3-4-70

111+56

**SU5
4-14-06**



**Fd
2-2-05
SAH**

N.E.S
N.15

O.D.O.T. DISTRICT 2 SURVEY OFFICE

PERSONNEL

REFERENCE NO. 6

SHEET 7 OF 26

NOTES CHENEY

H.C. RIPPLE

R.C. BARBOUR

GEYMAN

DATE 7-9-92

WEATHER SUNNY

TEMP. 60°

ROUTE S.R.#101

COUNTY SENECA

TOWNSHIP CLINTON

SECTION 20

T2 N R 15 E

TYPE MONUMENT P.K./washer

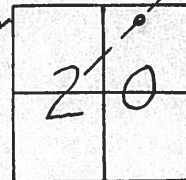
ON SURFACE - BELOW yes

LEFT- & PAV'T. - RIGHT 1'

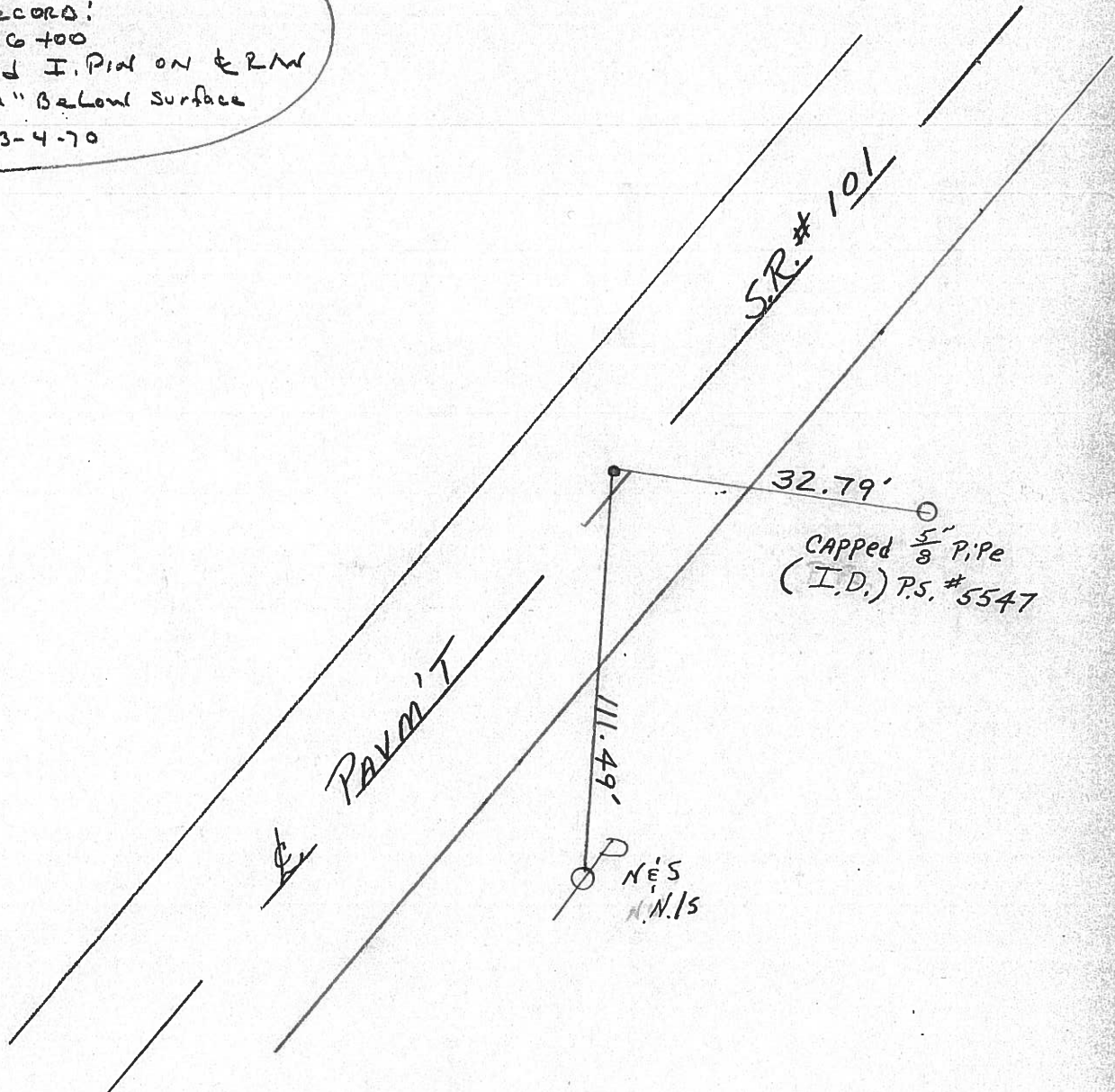
10.8 TO RT. EDGE PAVEMENT

S.L.M. 111+68

SET P.K./washer
9-30-92



Records:
26+00
Fd I. Pipe on & R/W
2" Below surface
3-4-70

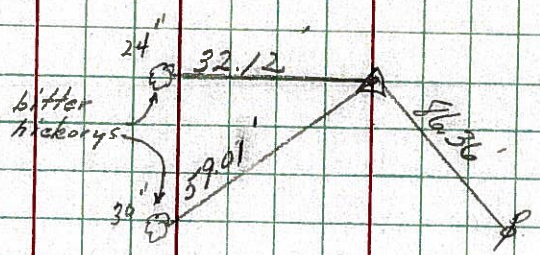


PERSONNEL TITLE PERSONNEL TITLE
 Cronin _____
 Ripple _____
 Geyman _____
 Anderson _____

COUNTY Seneca DATE 3/4/70
 S. R. #101 (I.C.H. #271) WEATHER _____
 SEC. I-K-O-J TEMP. _____

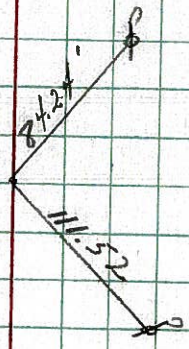
DESCRIPTION Ties for Control Points - Tiffin Corp. to Sand Co. Line JOB NO. _____
 LEFT CENTER LINE RIGHT

⑦ $\Delta = 0^\circ 49' LA$
 P.F. ~~3~~
 36+01.06
 Iron pin on & R/w
 2" below surface



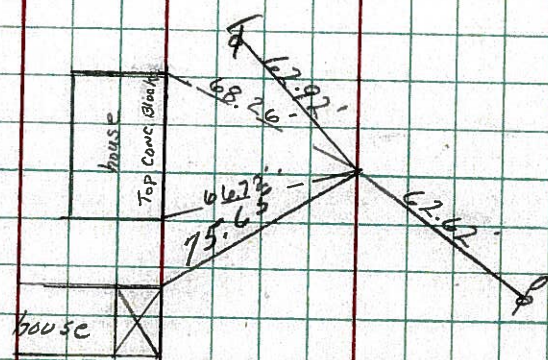
OK 2/25/71

⑥ 26+00 ~~4~~
 Iron pin on & R/w
 2" below surface



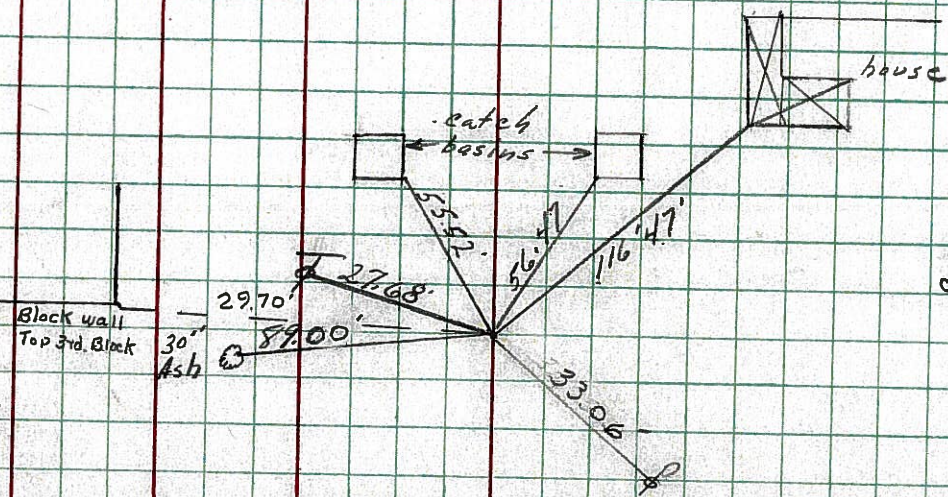
OK 2/25/71

⑤ 16+00 ~~3~~
 Iron pin on & R/w
 3" below surface



OK 2/25/71

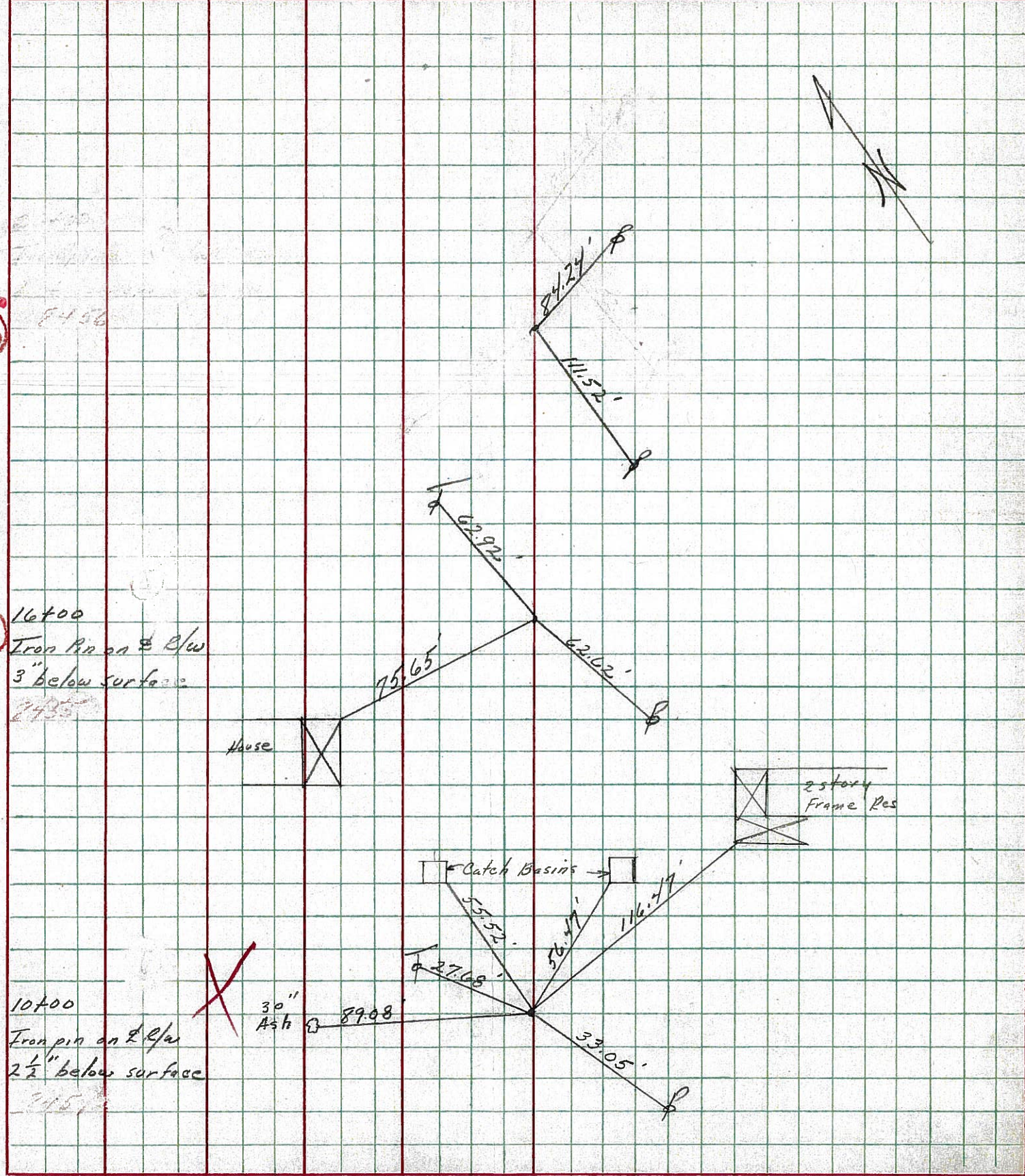
④ 10+00 ~~2~~
 Iron pins on & R/w
 2 1/2" below surface



OK 2/25/71

| PERSONNEL | TITLE | PERSONNEL | TITLE | COUNTY | DATE | WEATHER | TEMP. |
|-----------|-------|-----------|-------|------------------|--------|---------|-------|
| Cronin | | | | Seneca | 3/4/70 | | |
| Ripple | | | | #101 (S.H. #271) | | | |
| Geyman | | | | | | | |
| Anderson | | | | SEC. I-K-O-J. | | | |

DESCRIPTION Ties for Control Points - Tiffin Corp. to Sandusky Co. Line JOB NO. _____



LD-5 (25M-4-53)

| PERSONNEL | TITLE | PERSONNEL | TITLE | COUNTY | DATE |
|-----------|-------|-----------|-------|----------------|---------|
| Krabill | | | | Seneca | |
| Kowaleski | | | | S. R. # 101 | WEATHER |
| Geyman | | | | SEC. 151+53.60 | TEMP. |

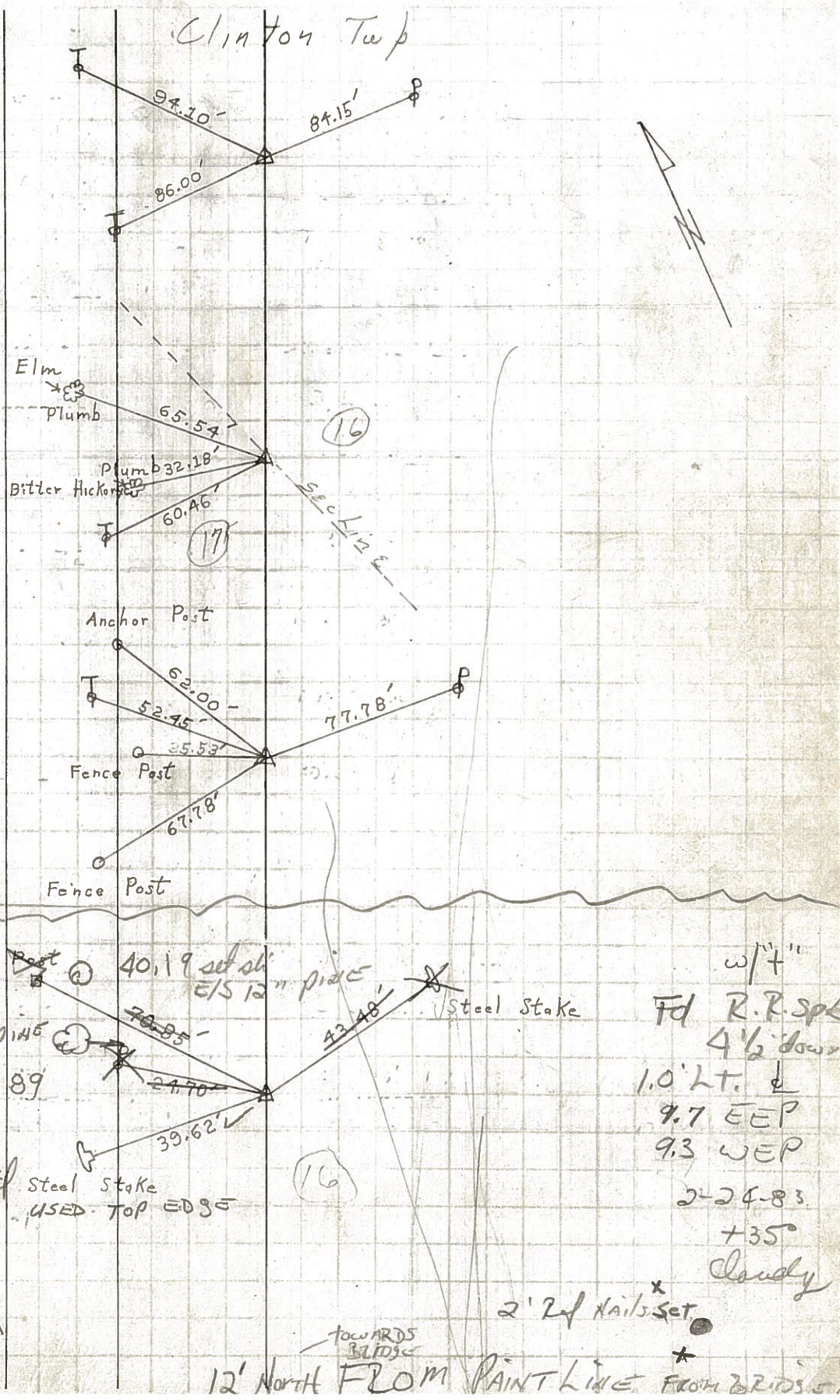
DESCRIPTION LEFT CENTER LINE RIGHT JOB NO.

⑥ STA. 26+00
Iron PPin (PK)
361
2-3-64

⑦ STA. 36+00
P. K.
362
2-3-64

⑨ STA. 54+00
Iron Pin
363
2-3-64

⑩ STA. 57+50
Iron Pin
364
2-3-64
set small
22 spl
3-1-83

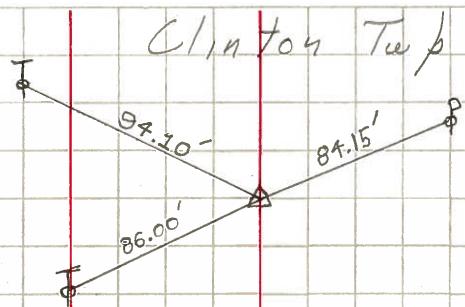


| PERSONNEL | TITLE | PERSONNEL | TITLE | COUNTY | DATE |
|-----------|-------|-----------|-------|-------------|---------|
| Krabill | | | | Seneca | |
| Kowaleski | | | | S. R. # 101 | WEATHER |
| Geyman | | | | SEC. | TEMP. |

| DESCRIPTION | LEFT | CENTER LINE | RIGHT | JOB NO. |
|-------------|------|-------------|-------|---------|
|-------------|------|-------------|-------|---------|

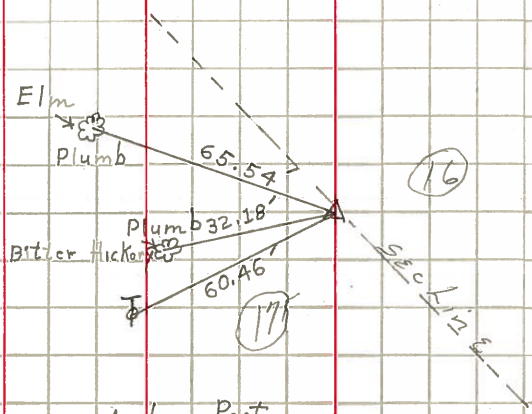
6

STA. 26+00
Iron Pin (PK)
361
2-3-64



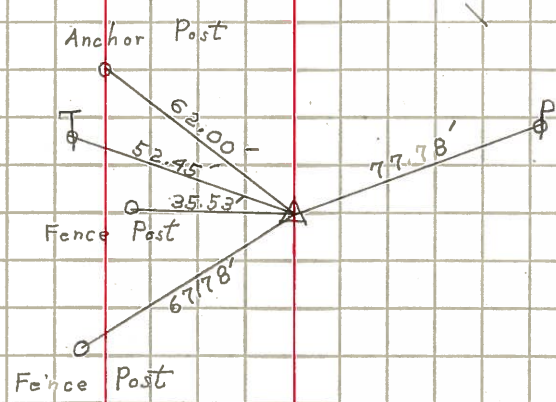
7

STA. 36+00
P. K.
362
2-3-64



9

STA. 54+00
Iron Pin
363
2-3-64



10

STA. 57+50
Iron Pin
364
2-3-64

