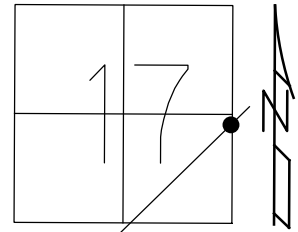


O.D.O.T. DISTRICT 2 SURVEY OFFICE (USE ONLY)

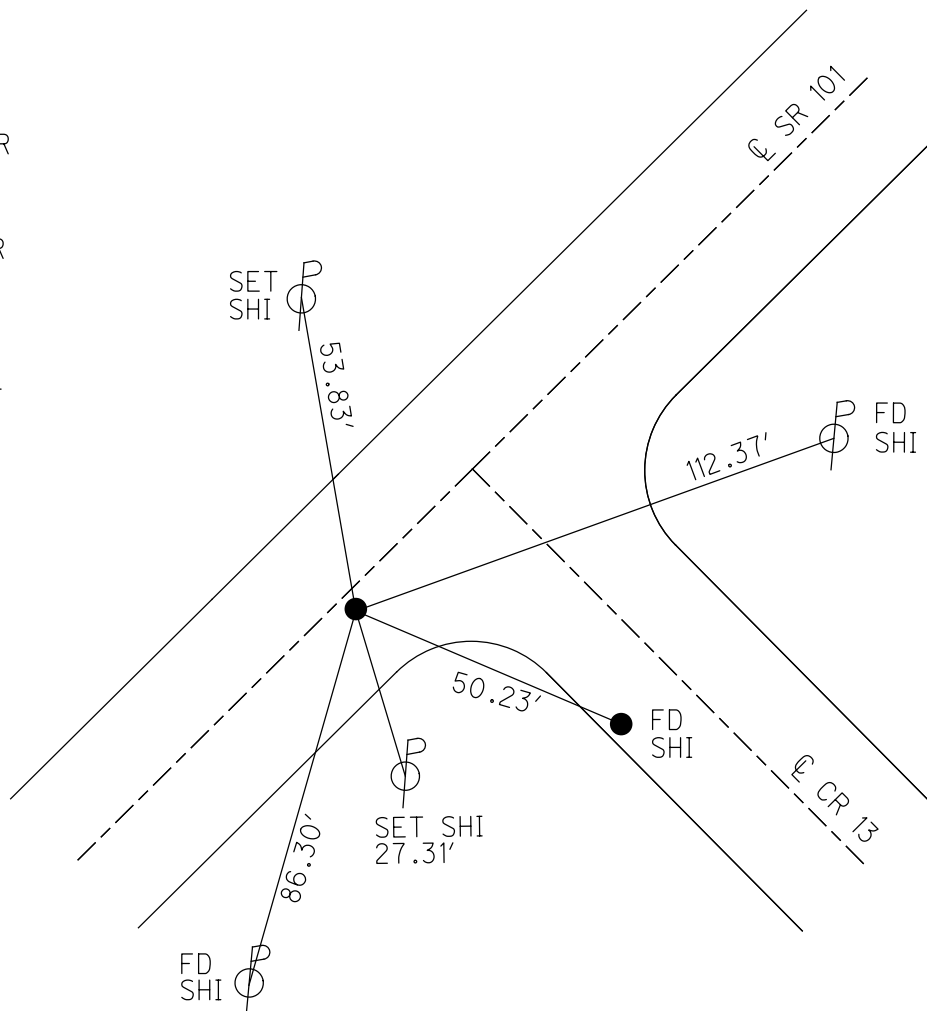
PERSONNEL _____ REFERENCE NO. 7 SHEET 8 OF 27
 NOTES RHOADES DATE 3/15/18 ROUTE SR 101
 H.C. O'DONNELL WEATHER SUNNY COUNTY SENECA
 R.C. SEAMAN TEMP. 32° TOWNSHIP CLINTON
 DWG BY MILLER PID 102817 SECTION 17
 T 2 N R 15 E

TYPE MONUMENT MAG/WASHER
 ON SURFACE - ~~BELOW~~ ON
 OFFSET Q PAVEMENT 1.5' ~~LT~~ : RT
8.1' TO RT EDGE PAVEMENT
 STATION: 121+68.05



HORZ.DATUM: NAD83 2011 GEOID: 2012A NAVD88
 GRID: NORTHING: 533599.839 EASTING: 1789422.350

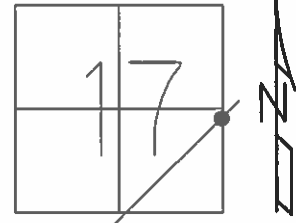
RECORD: P.I.
 SR 101 (S.H.#271)
 SEC. I-K-O-J
 $\Delta = 0^\circ 49' \text{ LT}$
 STA 36+01.06
 IPIN ON Q R/W
 2" BELOW
 3-04-70
 SET P.K./WASHER
 9-30-92
 FD P.K./WASHER
 6/23/08, DCH
 SET MAG/WASHER
 9-30-08, DCH
 FD MAG/WASHER
 REF7
 10-11-16, JFO
 MONBOX INSTALL
 FD MONBOX
 W/1" IPIN
 NEWREF7
 11-2-18, JFO



O.D.O.T. DISTRICT 2 SURVEY OFFICE (USE ONLY)

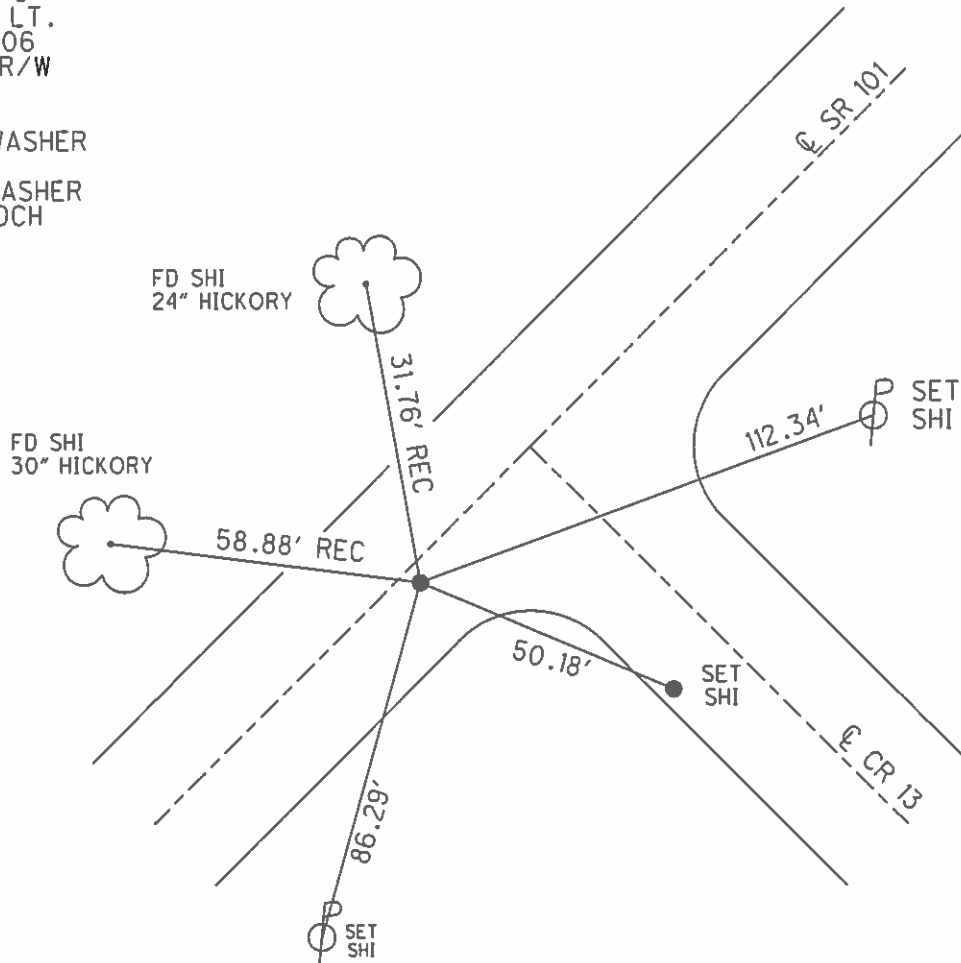
PERSONNEL _____ REFERENCE NO. 7 SHEET 8 OF 27
 NOTES HOMAN DATE 6-23-08 ROUTE SR 101
 H.C. ROUSOS WEATHER SUNNY COUNTY SENECA
 R.C. HOMAN TEMP. 70° TOWNSHIP CLINTON
 _____ SECTION 17
 _____ T 2 N R 15 E

TYPE MONUMENT P.K./WASHER
 ON SURFACE - ~~BELOW~~ ON
~~LEFT~~ - Q PAV'T - RIGHT 1.5'
8.1' TO RT EDGE PAVEMENT
 S.L.M. 121+66



GRID: NORTHING: 533599.821 EASTING: 1789422.323

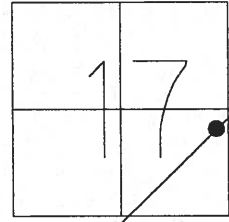
RECORD: P.I.
 SR 101 (S.H. # 271)
 SEC. I-K-O-J
 $\Delta = 0^\circ 49' \text{ LT.}$
 STA 36+01.06
 IPIN ON Q R/W
2" BELOW
 3/04/70
 SET P.K./WASHER
 9/30/92
 SET MAG/WASHER
 9/30/08, DCH



O.D.O.T. DISTRICT 2 SURVEY OFFICE

| | | |
|---------------------|------------------------|-----------------------------|
| PERSONNEL | REFERENCE NO. <u>7</u> | SHEET <u>8</u> OF <u>27</u> |
| NOTES <u>CHENEY</u> | DATE <u>7/9/92</u> | ROUTE <u>SR 101</u> |
| H.C. <u>RIPPLE</u> | WEATHER <u>SUNNY</u> | COUNTY <u>SENECA</u> |
| R.C. <u>BARBOUR</u> | TEMP. <u>60°</u> | TOWNSHIP <u>CLINTON</u> |
| <u>GEYMAN</u> | | SECTION <u>17</u> |
| | | T <u>2</u> N R <u>15</u> E |

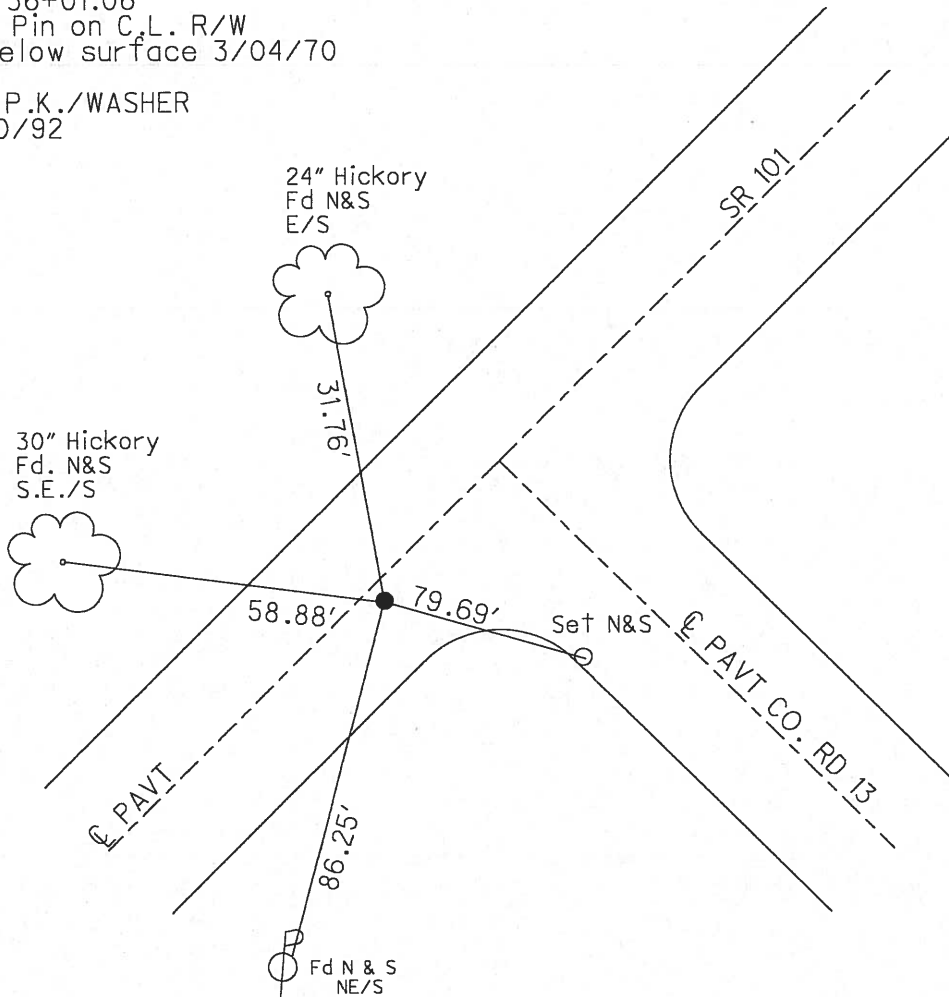
TYPE MONUMENT P.K./ WASHER
 ON SURFACE - ~~BELOW~~ ON
~~LEFT = C PAVT~~ - RIGHT 1.5'
8.1 TO RT EDGE PAVEMENT
 S.L.M. 121+66



Grid: Northing: _____ Easting: _____

Record: SR # 101 (S.H. # 271)
 Sec. I-K-O-J
 P.I. Delta = 0° 49' Lt.
 STA 36+01.06
 Iron Pin on C.L. R/W
 2" below surface 3/04/70

SET P.K./WASHER
 9/30/92



O.D.O.T. DISTRICT 2 SURVEY OFFICE

PERSONNEL

REFERENCE NO. 7

SHEET 7 OF 26

NOTES Cheney

H.C. Ripplé

DATE 7-9-92

ROUTE SR#101

R.C. BARBOUR

WEATHER SUNNY

COUNTY SENECA

GEYMAN

TEMP. 60°

TOWNSHIP CLINTON

SECTION 17

T2N R15E

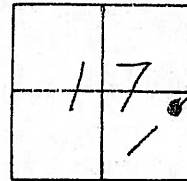
TYPE MONUMENT P.K./Washer SET P.K. & WASHER 9-30-92

ON SURFACE - ~~BELOW~~ yes

~~LEFT~~ - & PAV'T. - RIGHT 1.5'

B.1 TO RT. EDGE PAVEMENT

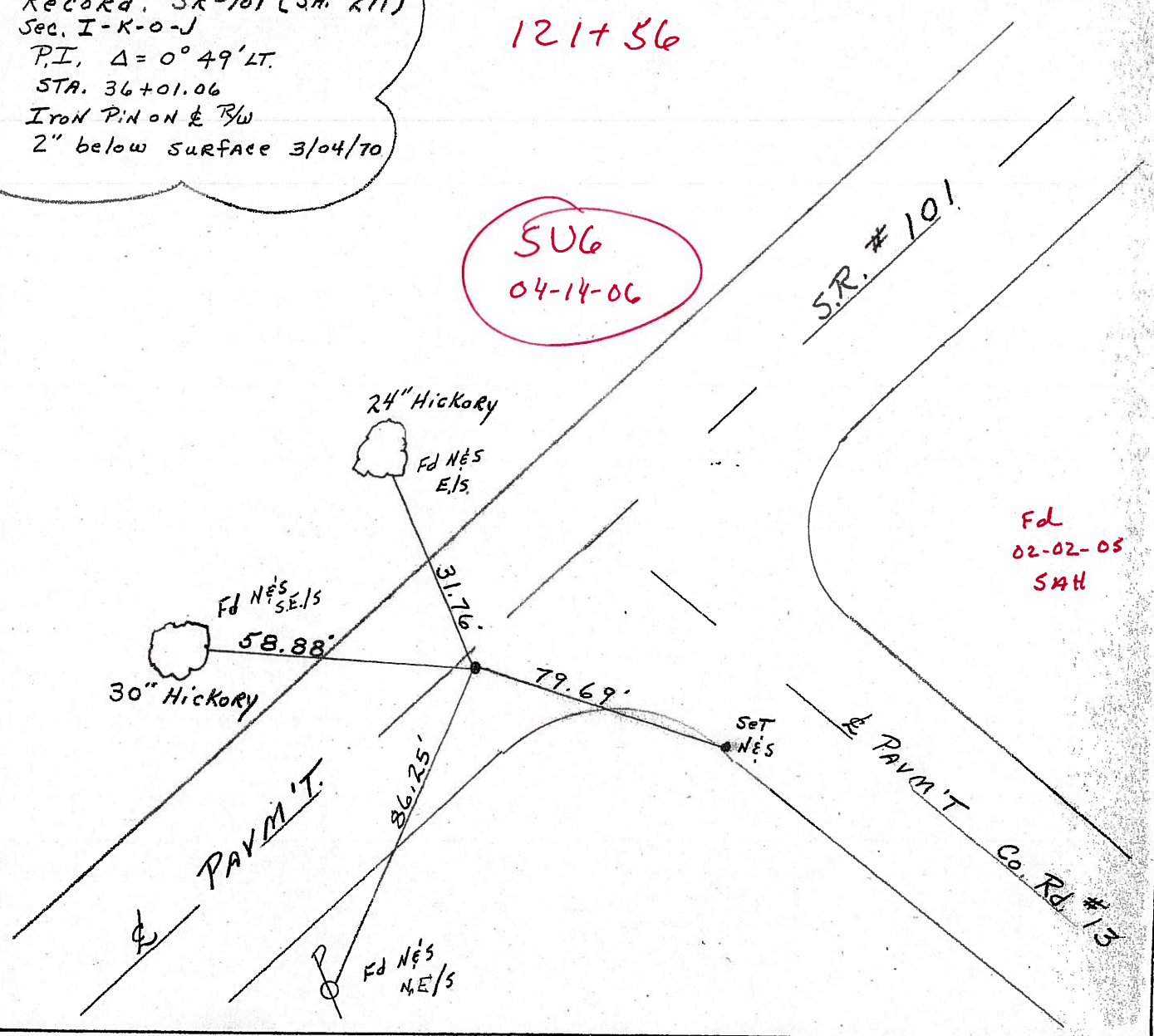
S.L.M. 121+66



Record: SR#101 (SH.#271)
 Sec. I-K-O-J
 P.I. Δ = 0° 49' LT.
 STA. 36+01.06
 Iron Pin on & B/W
 2" below surface 3/04/70

121+56

SUG
 04-14-06



O.D.O.T. DISTRICT 2 SURVEY OFFICE

PERSONNEL

REFERENCE NO. 7

SHEET 8 OF 26

NOTES Cheney

H.C. Ripple

DATE 7-9-92

ROUTE SR#101

R.C. BARBOUR

WEATHER SUNNY

COUNTY SENECA

GEYMAN

TEMP. 60°

TOWNSHIP CLINTON

SECTION 17

T2N R15E

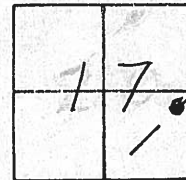
TYPE MONUMENT P.K./washer SET P.K./washer 9-30-92

ON SURFACE - ~~BELOW~~ yes

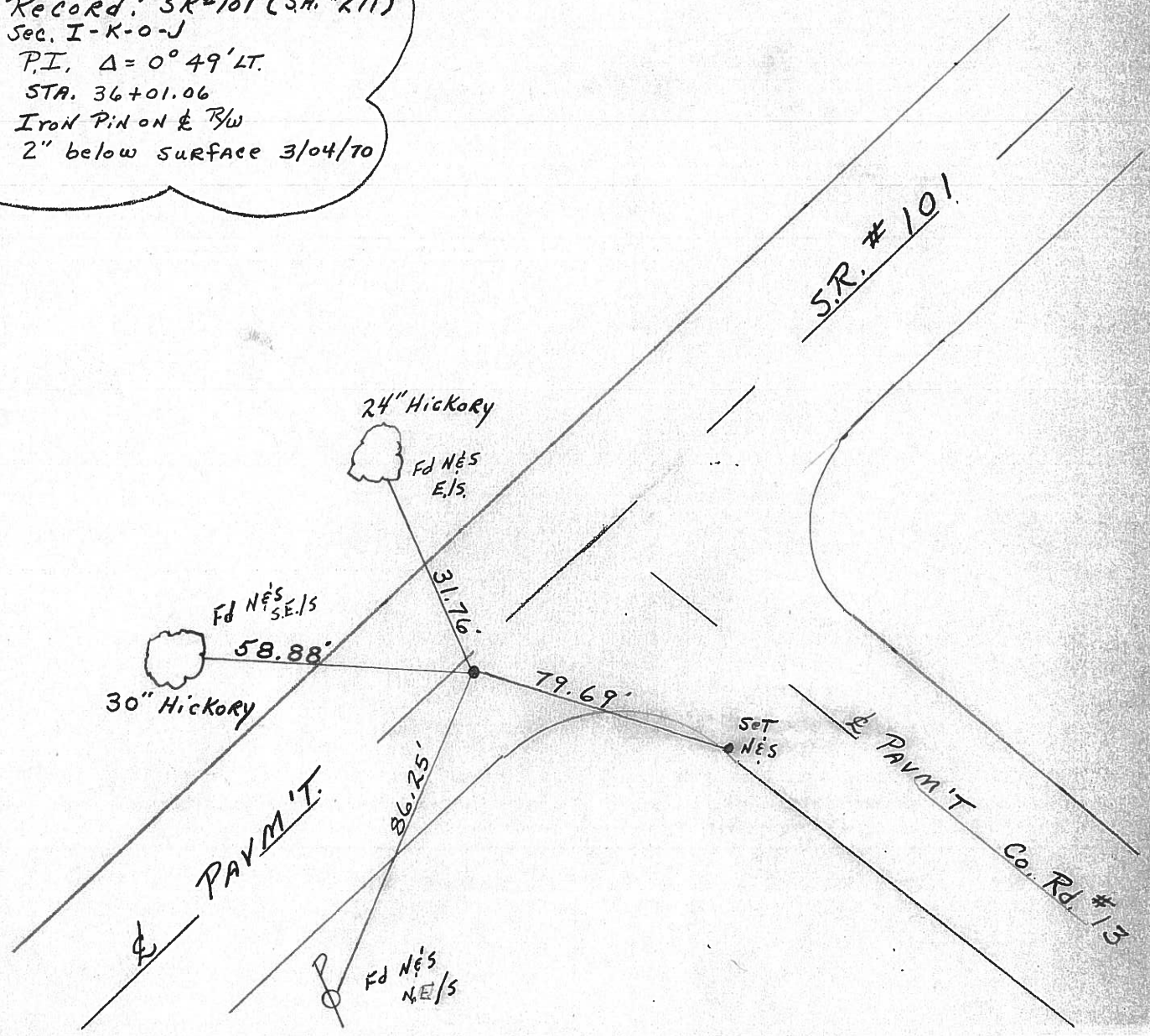
~~LEFT~~ - & PAV'T. - RIGHT 1.5'

8.1 TO RT. EDGE PAVEMENT

S.L.M. 121+66



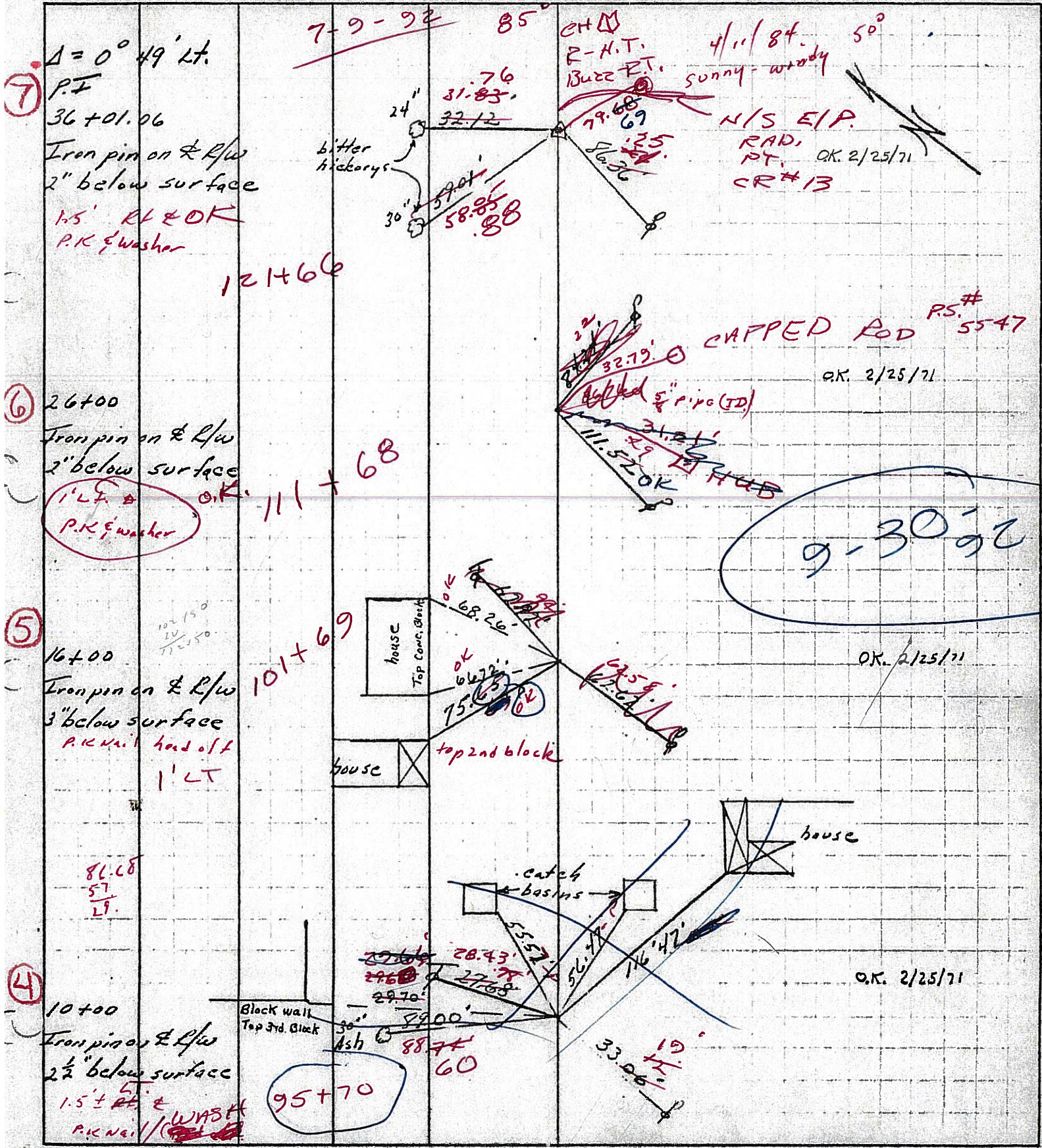
Record: SR#101 (SH.#271)
 Sec. I-K-O-J
 P.I. Δ = 0° 49' LT.
 STA. 36+01.06
 Iron Pin on E & R/W
 2" below surface 3/04/70



| PERSONNEL | TITLE | PERSONNEL | TITLE |
|-----------------|-------|-----------|-------|
| <u>Cronin</u> | | | |
| <u>Ripple</u> | | | |
| <u>Geyman</u> | | | |
| <u>Anderson</u> | | | |

COUNTY Seneca DATE 3/4/70
 S. R. *101 (T.C.H. #271) WEATHER _____
 SEC. I-K-O-L TEMP _____

DESCRIPTION Ties for Control Points - Tiffin Corp. to Sand Co. Line JOB NO. _____



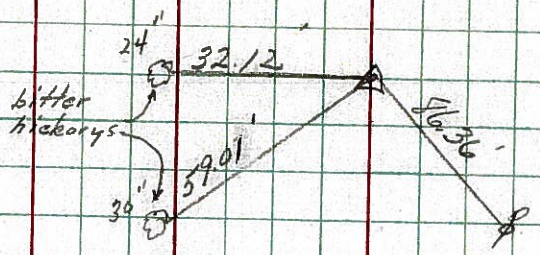
PERSONNEL TITLE PERSONNEL TITLE
 Cronin _____
 Ripple _____
 Geyman _____
 Anderson _____

COUNTY Seneca DATE 3/4/70
 S. R. #101 (I.C.H. #271) WEATHER _____
 SEC I-K-O-J TEMP _____

DESCRIPTION Ties for Control Points - Tiffin Corp. to Sand Co. Line
 LEFT CENTER LINE RIGHT JOB NO. _____

7

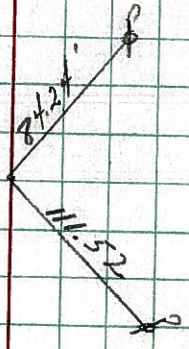
$\Delta = 0^\circ 49' \text{ Lt}$
 P.F. ~~3~~
 36+01.96
 Iron pin on E & W
 2" below surface



OK. 2/25/71

6

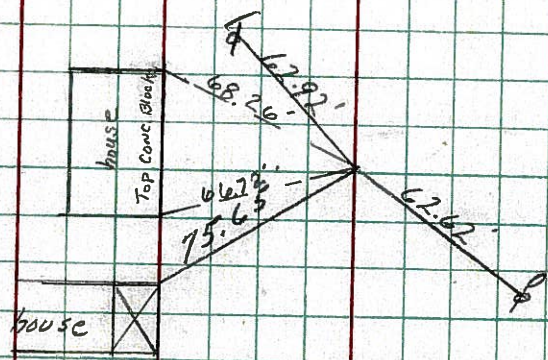
26+00 ~~3~~
 Iron pin on E & W
 2" below surface



OK. 2/25/71

5

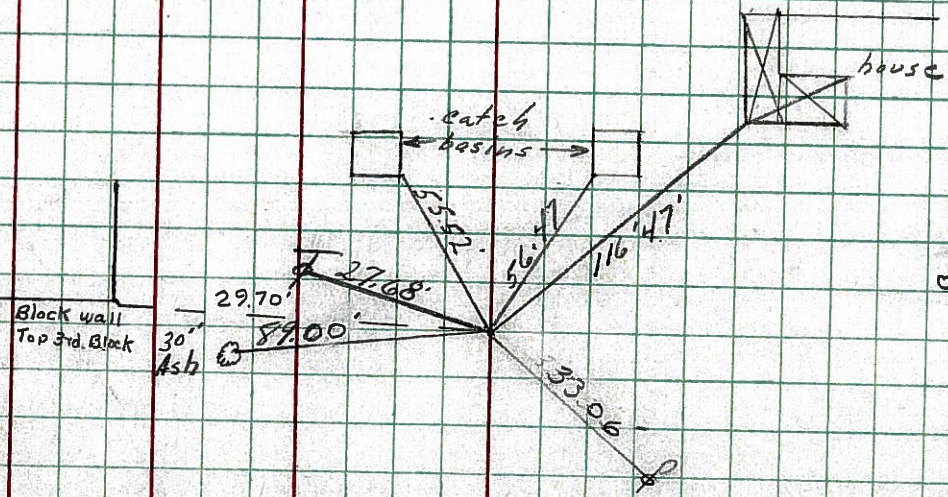
16+00 ~~3~~
 Iron pin on E & W
 3" below surface



OK. 2/25/71

4

10+00 ~~3~~
 Iron pin on E & W
 2 1/2" below surface



OK. 2/25/71

PERSONNEL TITLE PERSONNEL TITLE

COUNTY Seneca DATE 3/4/70

Cronin

Ripple

Geyman

Anderson

S. R. #101 (S.H. #271)

WEATHER

SEC.

TEMP.

DESCRIPTION Ties for Control Points - Tiffin Corp. to Sandusky Co. Line JOB NO.

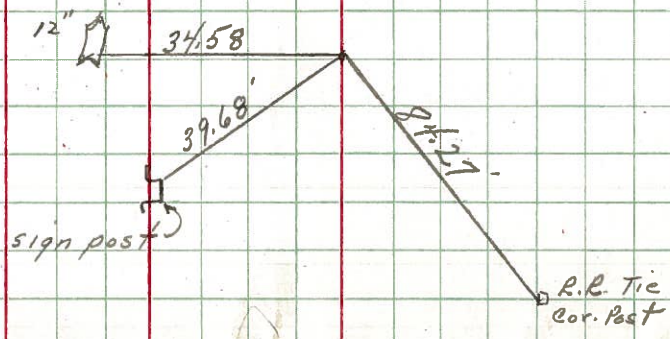
LEFT

CENTER LINE

RIGHT

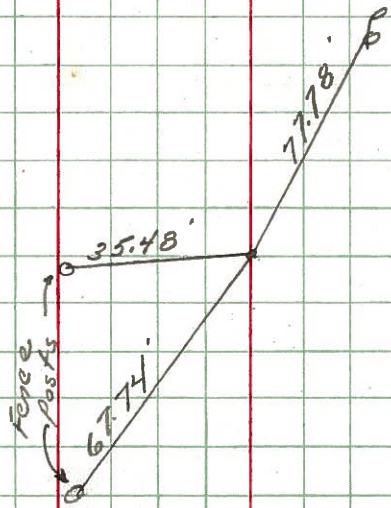
10

57750
Iron pin on E R/W
2 1/2" below surface



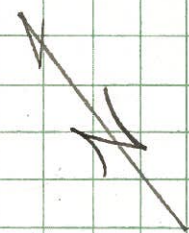
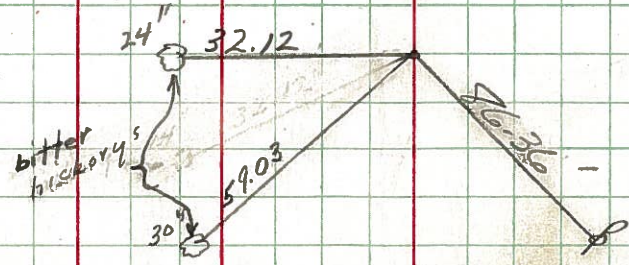
9

54400
Iron pin on E R/W
3" below surface



7

36400
R.R. Spk. on E R/W
2" below surface



PERSONNEL TITLE PERSONNEL TITLE

COUNTY Seneca DATE

Krabill

Kowalecki

Geyman

S. R. # 101

WEATHER

SEC 151 + 53.60

TEMP

DESCRIPTION

LEFT

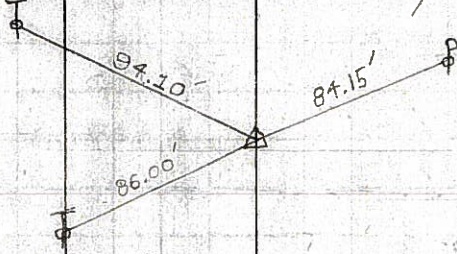
CENTER LINE

RIGHT

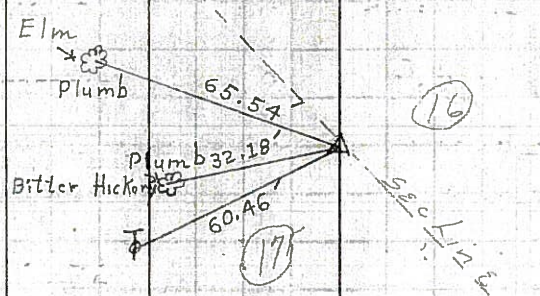
JOB NO.

Clinton Twp

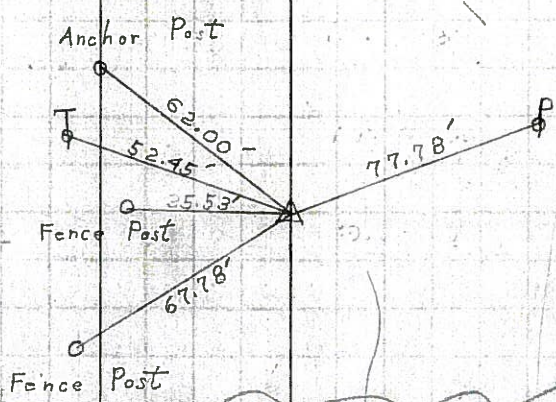
6 STA. 26+00
Iron Pin (PK)
361
2-3-64



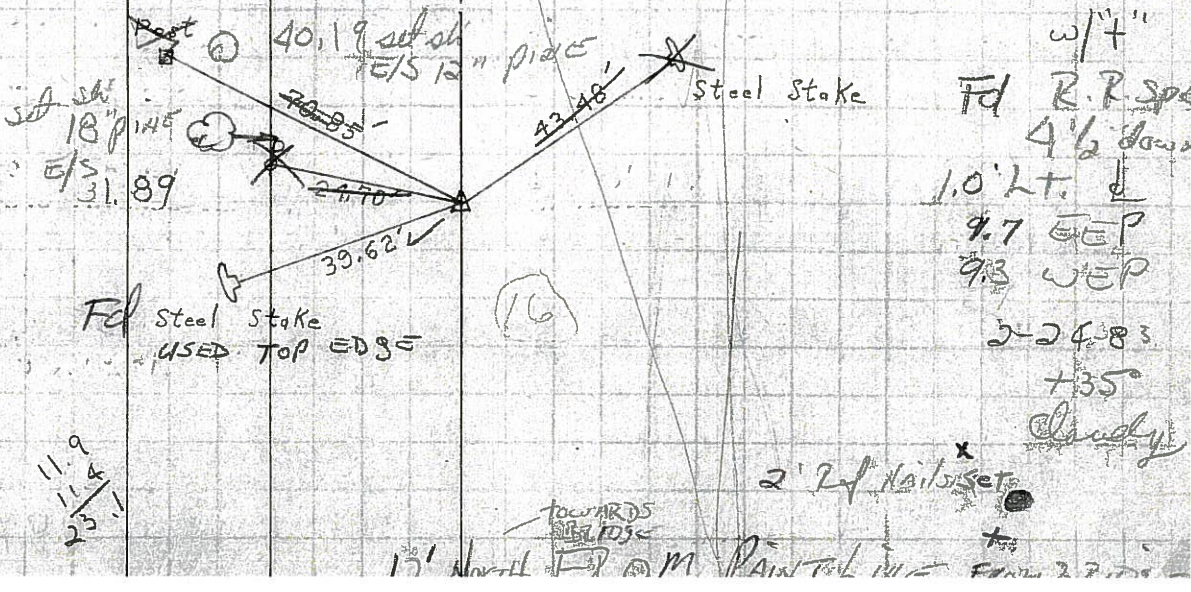
7 STA. 36+00
P.K.
362
2-3-64



9 STA. 54+00
Iron Pin
363
2-3-64



10 STA. 57+50
Iron Pin
364
2-3-64



PERSONNEL TITLE PERSONNEL TITLE

COUNTY Seneca

DATE

Krabbill

Kowalski

Geyman

S. R. # 101

WEATHER

SEC.

TEMP.

DESCRIPTION

LEFT

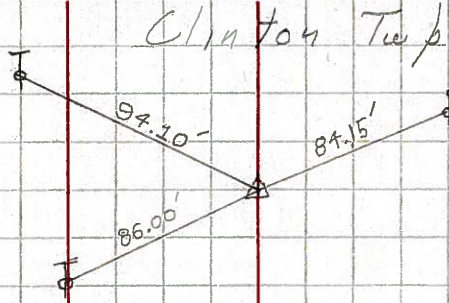
CENTER LINE

RIGHT

JOB NO.

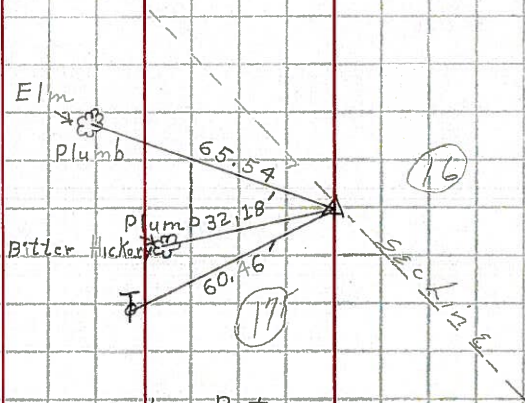
6

STA. 26+00
Iron Pⁿ (PK)
361
2-3-64



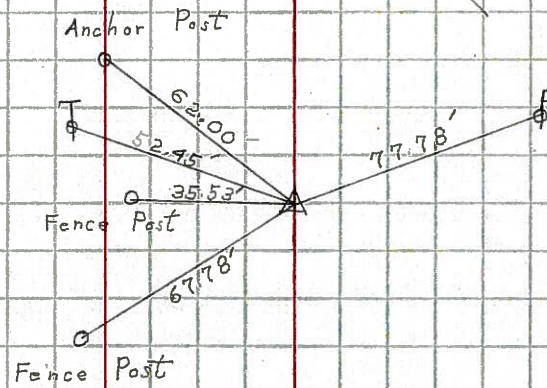
7

STA. 36+00
P. K.
362
2-3-64



9

STA. 54+00
Iron Pin
363
2-3-64



10

STA. 57+50
Iron Pin
364
2-3-64

