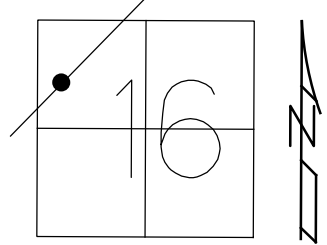


O.D.O.T. DISTRICT 2 SURVEY OFFICE (USE ONLY)

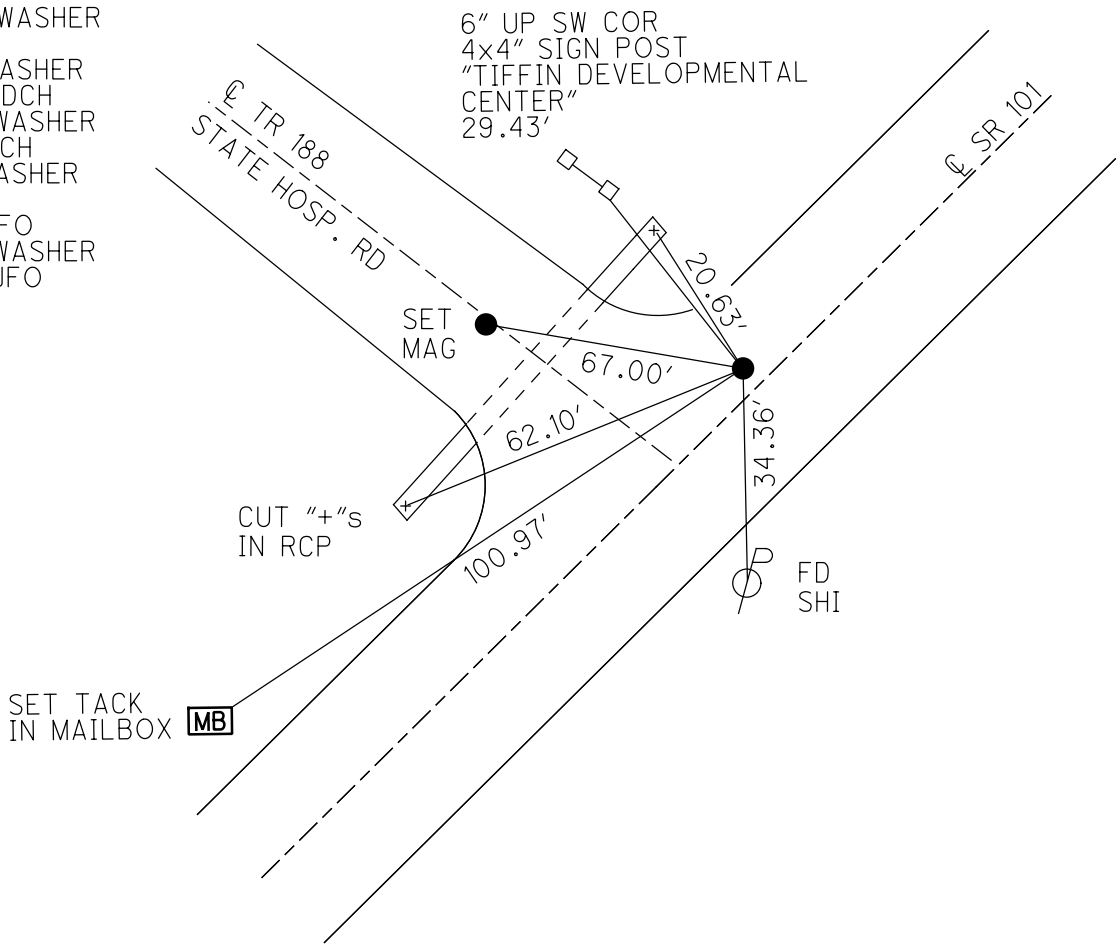
PERSONNEL _____ REFERENCE NO. 8 SHEET 9 OF 27
 NOTES RHOADES DATE 3/15/18 ROUTE SR 101
 H.C. O'DONNELL WEATHER SUNNY COUNTY SENECA
 R.C. SEAMAN TEMP. 32° TOWNSHIP CLINTON
 DWG BY MILLER PID 102817 SECTION 16
 T 2 N R 15 E

TYPE MONUMENT _____ MAG/WASHER _____
 ON SURFACE - ~~BELOW~~ _____ ON _____
 OFFSET ☉ PAVEMENT 0.5' LT : ~~RT~~
10.9 TO RT EDGE PAVEMENT
 STATION: 132+54.26



HORZ. DATUM: NAD83 2011 GEOID: 20/2A NAVD88
 GRID: NORTHING: 534341.426 EASTING: 1790215.964

RECORD: P.I.
 $\Delta = 0^\circ 32' \text{ LT}$
 STA. 46+88.42
 FD HARROW TOOTH
 3" BELOW
 3-11-70
 SET P.K./WASHER
 9-30-92
 FD P.K./WASHER
 6/23/08, DCH
 SET MAG/WASHER
 10-1-08, DCH
 FD MAG/WASHER
 REF8
 10-11-16, JFO
 SET MAG/WASHER
 10-10-18, JFO



O.D.O.T. DISTRICT 2 SURVEY OFFICE (USE ONLY)

PERSONNEL _____ REFERENCE NO. 8 SHEET 9 OF 27

NOTES HOMAN DATE 6-23-08 ROUTE SR 101
 H.C. ROUSOS WEATHER SUNNY COUNTY SENECA
 R.C. HOMAN TEMP. 75° TOWNSHIP CLINTON
 SECTION 16
 T 2 N R 15 E

TYPE MONUMENT P.K.NAIL

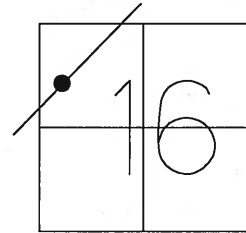
ON SURFACE - ~~BELOW~~ ON

~~LEFT~~ - C PAV'T - RIGHT 0.5'

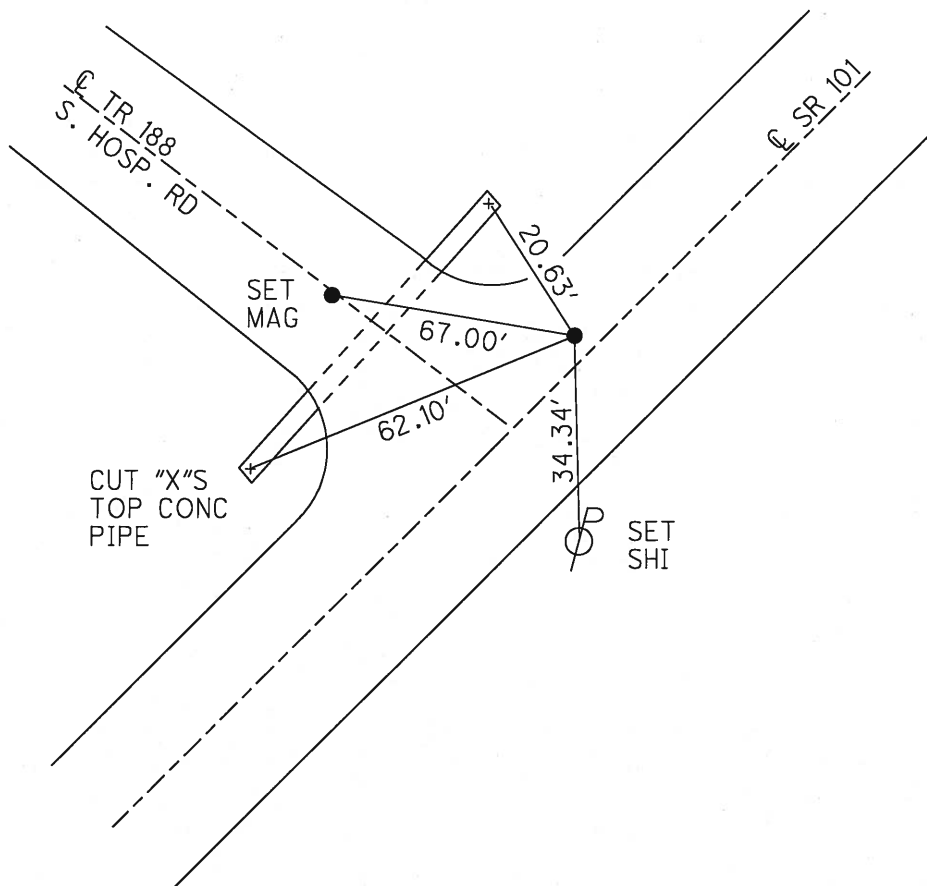
10.9 TO RT EDGE PAVEMENT

S.L.M. 132+55

GRID: NORTHING: 534341.449 EASTING: 1790215.91



RECORD: P.I.
 $\Delta = 0^\circ 32' \text{ LT}$
 STA. 46+88.42
 FD HARROW TOOTH
 3" BELOW
 3/11/70
 SET P.K./WASHER
 9/30/92
 SET MAG/WASHER
 10/1/08, DCH



O.D.O.T. DISTRICT 2 SURVEY OFFICE

PERSONNEL

REFERENCE NO. 8

SHEET 9 OF 27

NOTES CHENEY

DATE 7/20/92

ROUTE SR 101

H.C. RIPPLE

WEATHER SUNNY

COUNTY SENECA

R.C. BARBOUR

TEMP. 60°

TOWNSHIP CLINTON

GEYMAN

SECTION 16

T 2 N R 15 E

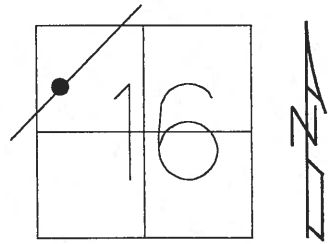
TYPE MONUMENT _____ P.K. _____

ON SURFACE - ~~BELOW~~ ON _____

~~LEFT - C PAV'T - RIGHT~~ _____ 1' _____

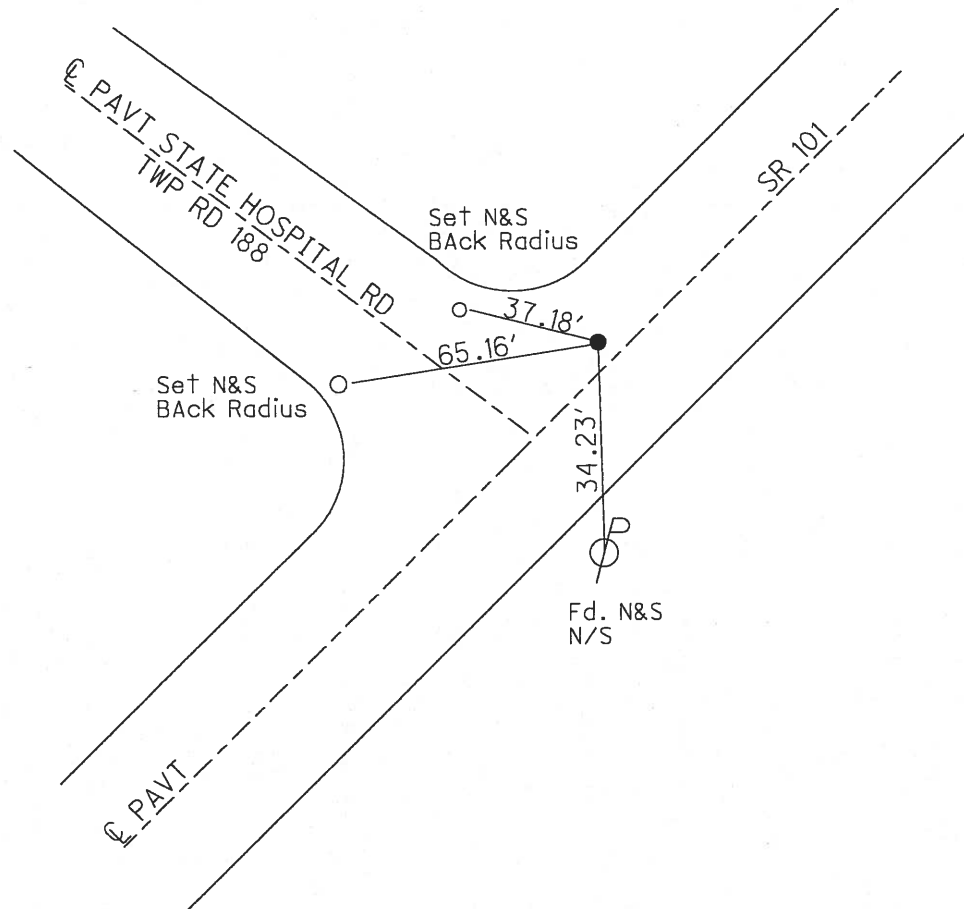
10.9 TO RT. EDGE PAVEMENT

S.L.M. 132+55



Record: PI Delta = $0^{\circ}-32'$ LT
 STA. 46+88.42
 Fd. Harrow Tooth 3" below surface
 3/11/70

RESET P.K./WASHER
 9/30/92



O.D.O.T. DISTRICT 2 SURVEY OFFICE

PERSONNEL

REFERENCE NO. 8

SHEET 8 OF 26

NOTES Cheney

H.C. RIPPLE

R.C. BARBOUR

GEYMAN

DATE 7-20-92

WEATHER SUNNY

TEMP. 60

ROUTE SR. #101

COUNTY SENECA

TOWNSHIP CLINTON

SECTION 16

T2 N R15 E

TYPE MONUMENT P.K. /w

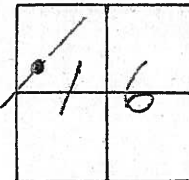
Reset PK washer
9-30-92

ON SURFACE - BELOW yes

LEFT - CL PAV'T. - RIGHT 1'

10.9 TO RT. EDGE PAVEMENT

S.L.M. 132+55



Record: P.I. $A = 0^{\circ} 32' LT.$
STA. 46+88.42
Fd. HARROWTOOTH 3" below SURFACE
3/11/70

132+43

CL PAVM'T. STATE HOSPITAL Rd. TWP. Rd. #188

SR. #101

Set N's
BACK Radius

37.18'

65.16'

Set N's
BACK Radius

34.23'

SU7
4-14-06

Point
is
Actually
here

Fd. N's
N/S

Fd
02-02-05
SAH

CL PAVM'T.

O.D.O.T. DISTRICT 2 SURVEY OFFICE

PERSONNEL

REFERENCE NO. 8

SHEET 8 OF 26

NOTES Cheney

H.C. RiPPlE

R.C. BARBOUR

GeyMAN

DATE 7-20-92

WEATHER SUNNY

TEMP. 60

ROUTE SR. #101

COUNTY SENECA

TOWNSHIP CLINTON

SECTION 16

T2N R15E

TYPE MONUMENT P.K.

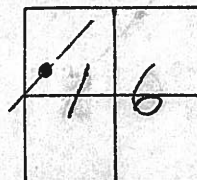
ON SURFACE - BELOW yes

LEFT- & PAV'T. - RIGHT 1'

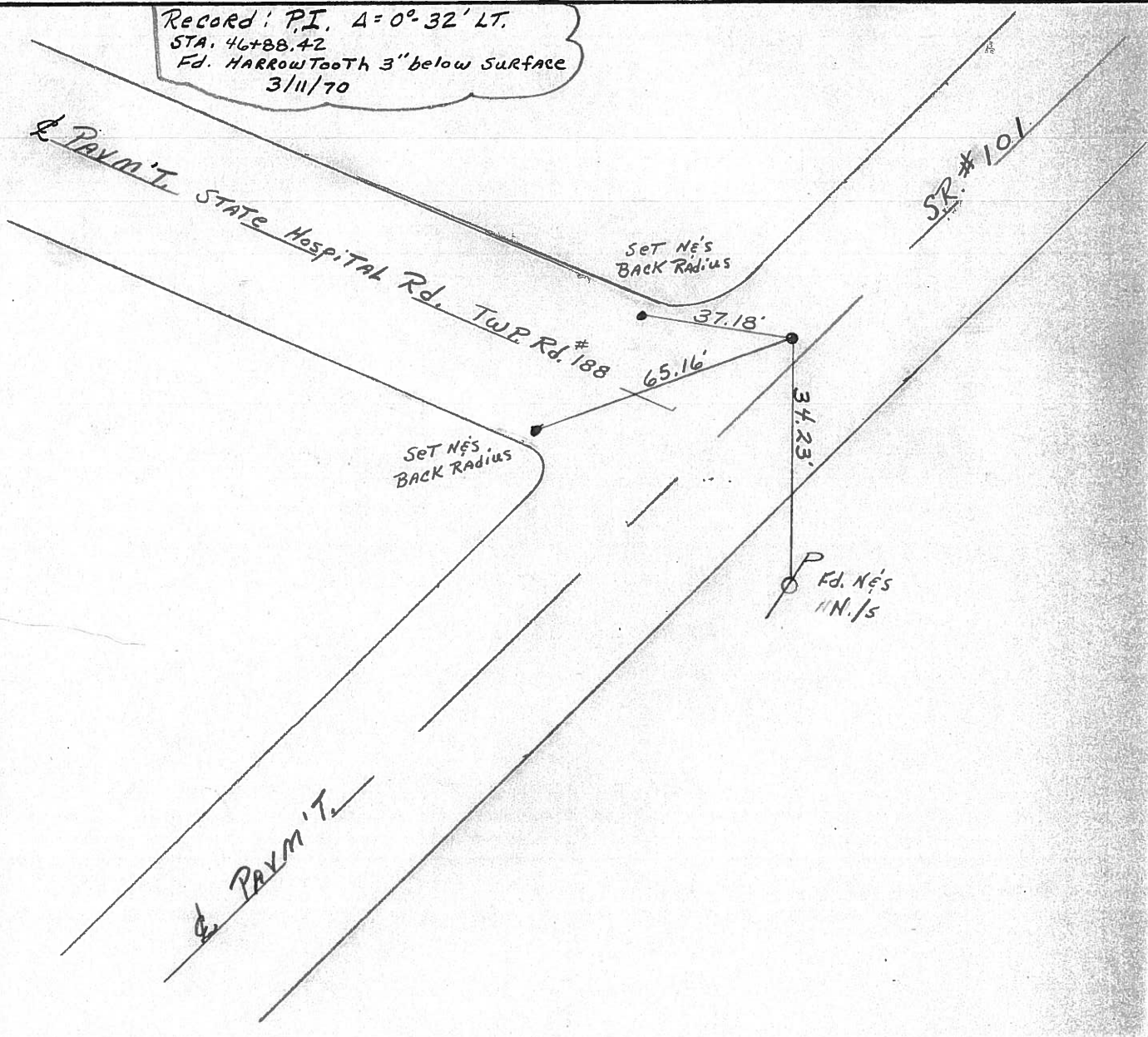
10.9 TO RT. EDGE PAVEMENT

S.L.M. 132+55

Reset PK Washer
9-30-92



Record: P.I. $\Delta = 0^{\circ} 32' LT.$
 STA. 46+88.42
 Fd. HARROW TOOTH 3" below SURFACE
 3/11/70



16

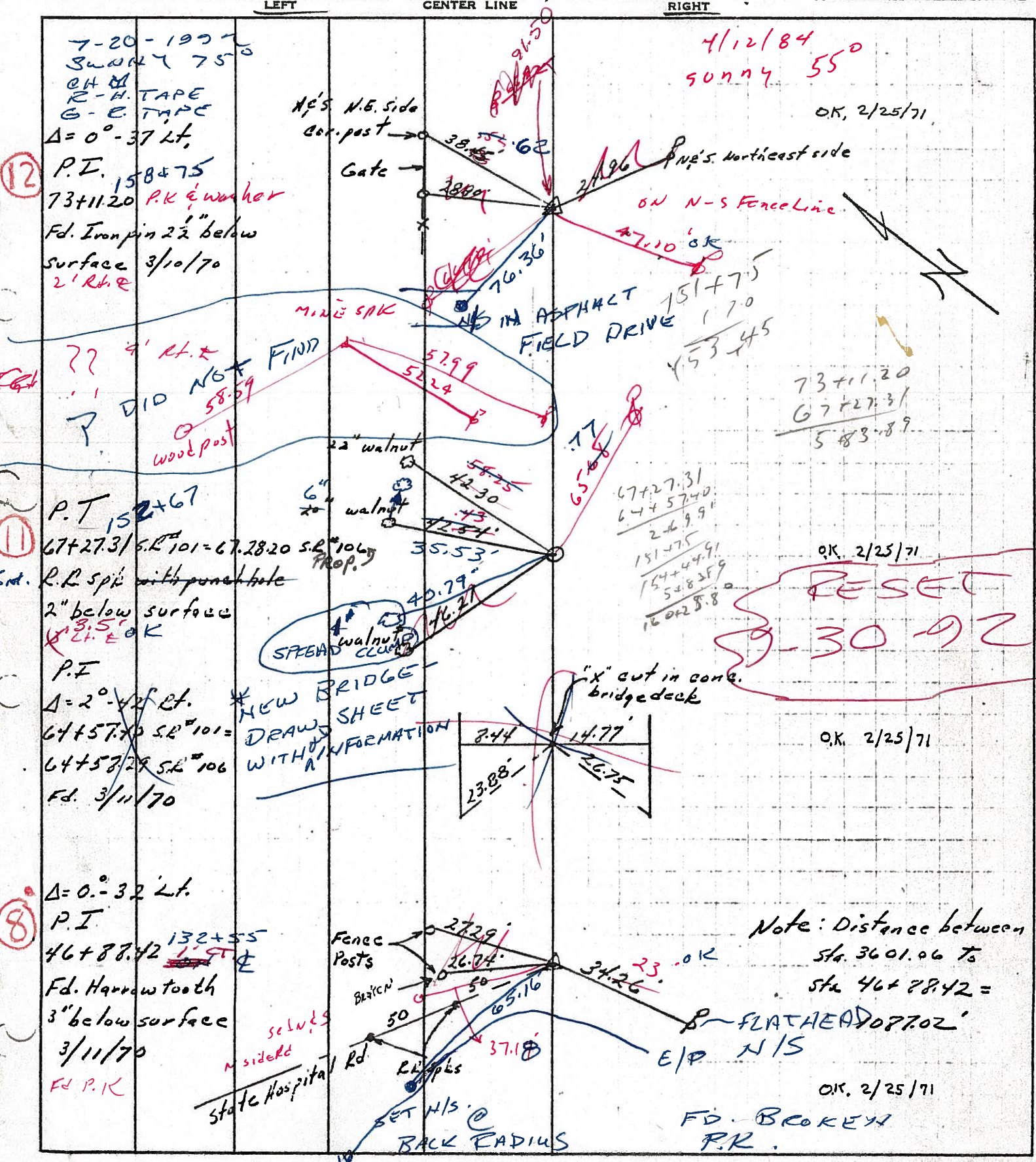
PERSONNEL TITLE PERSONNEL TITLE

COUNTY Seneca DATE 3/11/70

S. R. 101 (I CH #271) WEATHER sunny

SEC. I-K-O-J TEMP. 30°

DESCRIPTION Ties for Control Points - Tit-in Corp to Sand. Co. Line JOB NO. _____



(12)

(11)

(8)

4/12/84
sunny 55°

OK, 2/25/71

ON N-S Fence Line
7.10 OK

151+75
170
153+45

73+11.20
67+27.31
583.89

67+27.31
64+57.40
249.91
151+75
154+44.91
548.35
16025.8

OK, 2/25/71

RESET
30 92

OK, 2/25/71

Note: Distance between
Sta. 3601.06 to
Sta 46+88.42 =

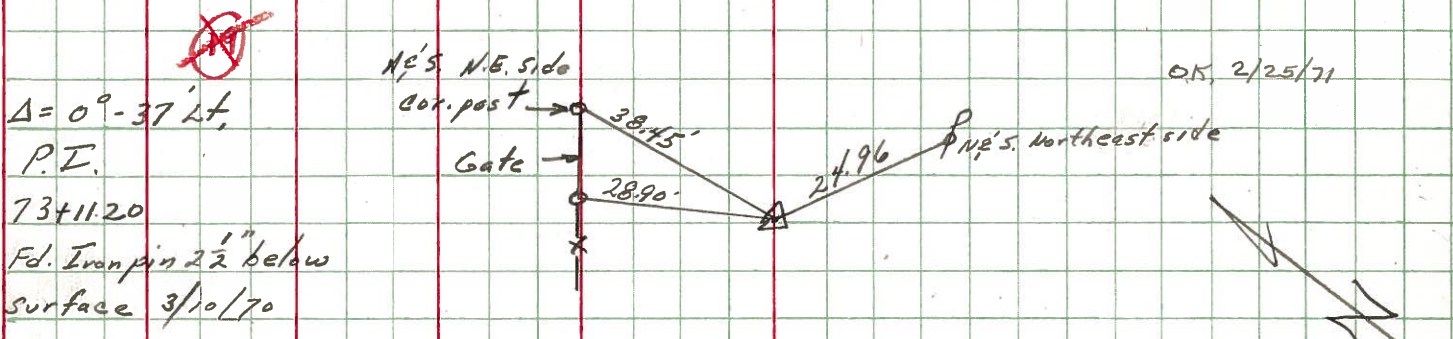
OK, 2/25/71

FD. BROKEN
P.R.

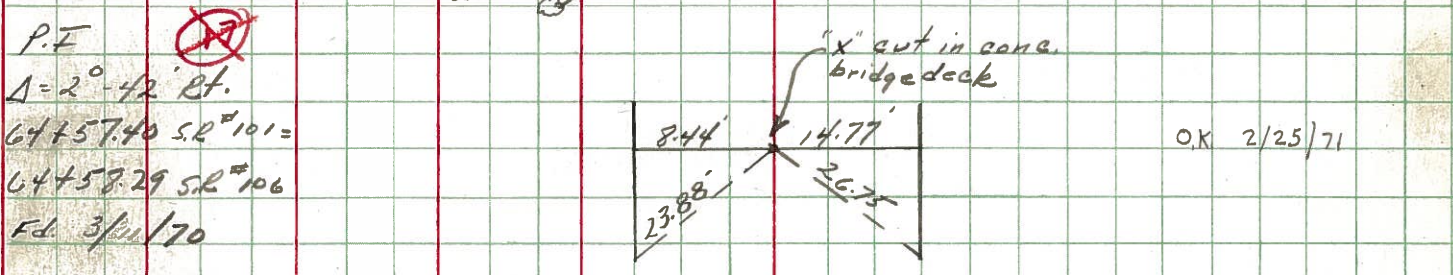
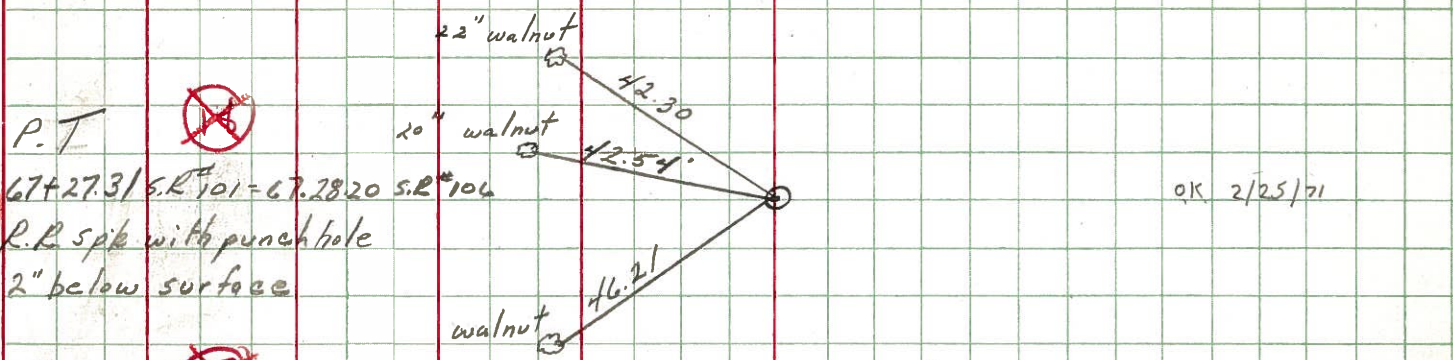
PERSONNEL TITLE PERSONNEL TITLE COUNTY Seneca DATE 3/11/70
 Ash _____
 Cronin _____ S. R. #101 (I.C.H. #271) WEATHER sunny
 Ripple _____ SEC. I-K-O-J TEMP. 30°
 Geyman _____

DESCRIPTION Ties for Control Points - Tiffin Corp to Sand. Co. Line JOB NO. _____
 LEFT CENTER LINE RIGHT

12



11



8

