

O.D.O.T. DISTRICT 2 SURVEY OFFICE (USE ONLY)

PERSONNEL

REFERENCE NO. 9

SHEET 10 OF 27

NOTES CHENEY
 H.C. RIPPLE
 R.C. BARBOUR
GEYMAN

DATE 7/20/92
 WEATHER SUNNY
 TEMP. 60°

ROUTE SR 101
 COUNTY SENECA
 TOWNSHIP CLINTON
 SECTION 16

DWG BY MILLER PID 102817

T 2 N R 15 E

TYPE MONUMENT _____ IPIN _____

~~ON SURFACE~~ - BELOW 4"

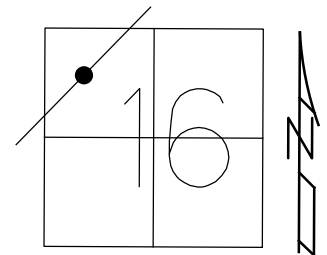
OFFSET CL PAVEMENT 2.5' ~~LT~~ : RT

7.5' TO RT EDGE PAVEMENT

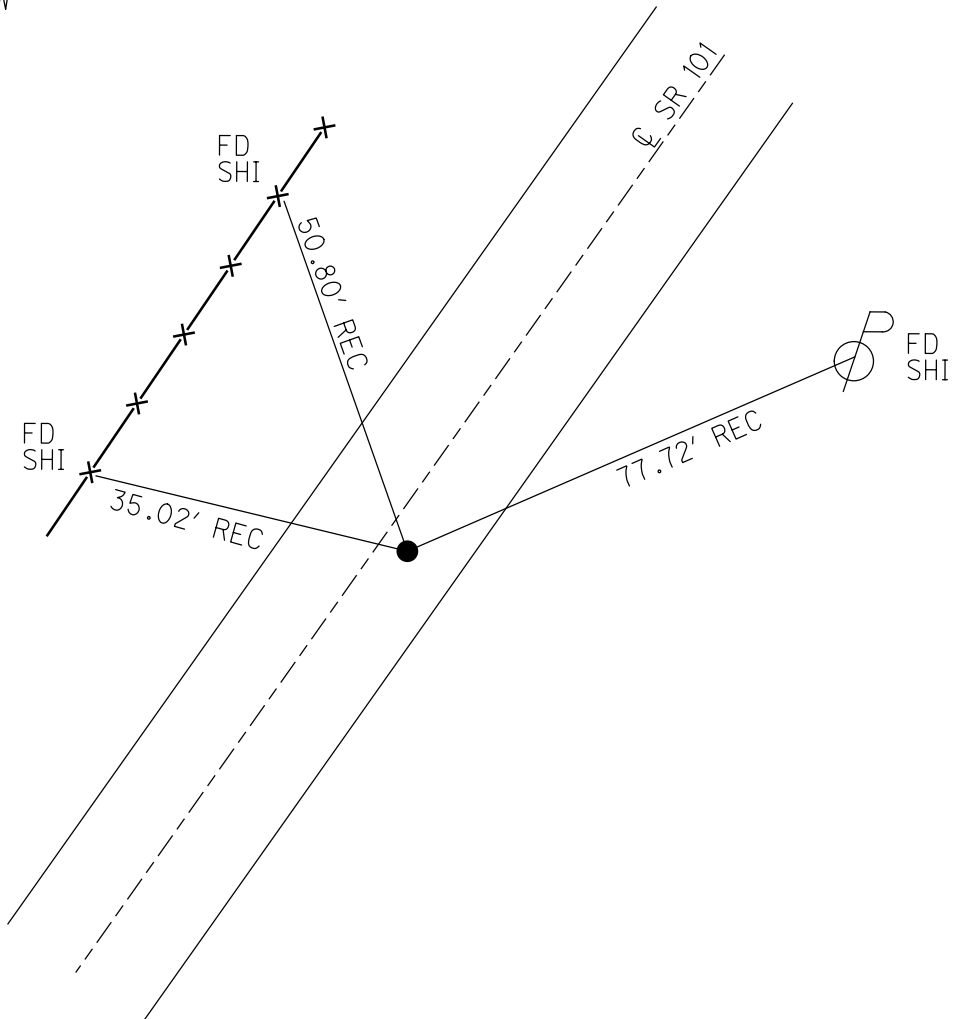
STATION: 139+78.42

HORIZ.DATUM: _____ GEOID: _____

GRID: NORTHING: _____ EASTING: _____



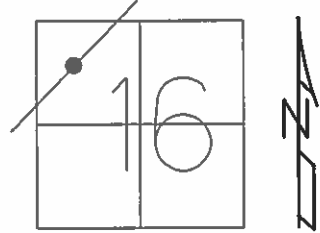
RECORD:
 STA. 54+00
 FD IPIN ON CL R/W
 3" BELOW
 3-4-70
 FD IPIN
 4" DOWN
 7/20/92, RIPPLE
 SET P.K./WASHER
 9-30-92, RIPPLE
 DNF
 6-23-08, DCH
 DNF
 10-11-16, JFO



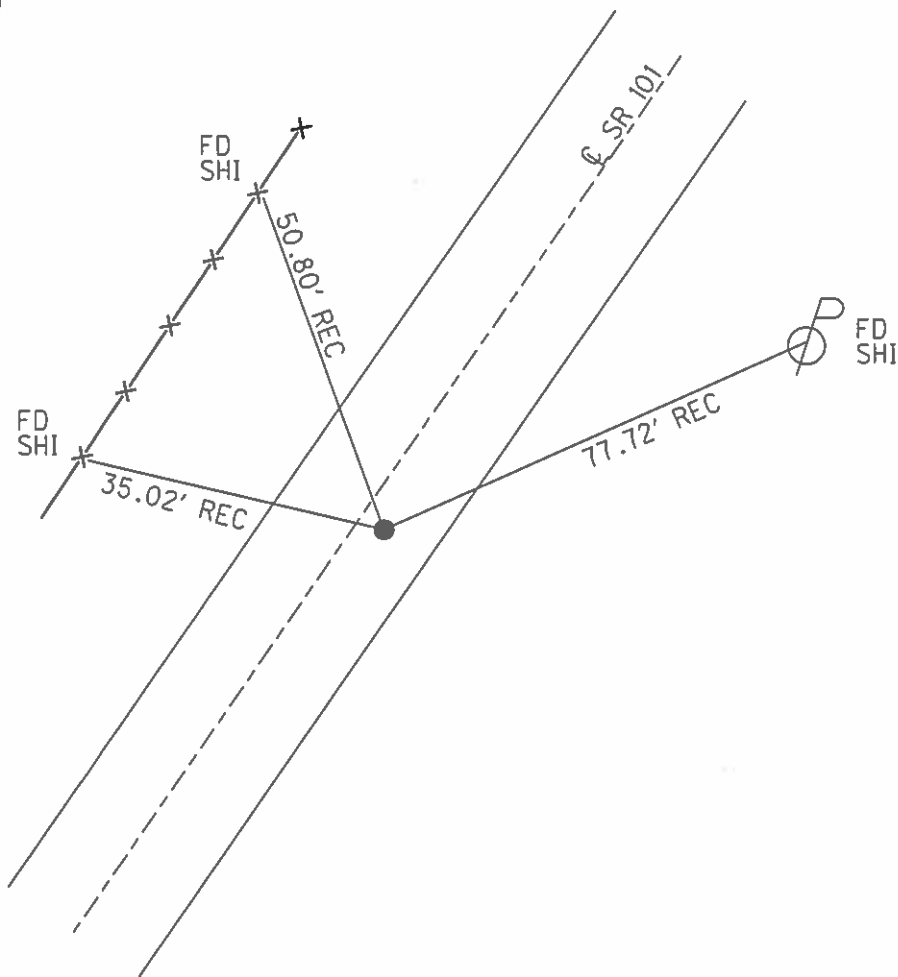
O.D.O.T. DISTRICT 2 SURVEY OFFICE (USE ONLY)

PERSONNEL _____ REFERENCE NO. 9 SHEET 10 OF 27
 NOTES CHENEY DATE 7/20/92 ROUTE SR 101
 H.C. RIPPLE WEATHER SUNNY COUNTY SENECA
 R.C. BARBOUR TEMP. 60° TOWNSHIP CLINTON
GEYMAN SECTION 16
T 2 N R 15 E

TYPE MONUMENT IPIN
~~ON SURFACE~~ - BELOW 4"
~~LEFT~~ - Q PAV'T - RIGHT 2.5'
7.5' TO RT EDGE PAVEMENT
 S.L.M. 139+84
 GRID: NORTHING: - EASTING: -



RECORD:
 STA. 54+00
 FD IPIN ON Q R/W
 3" BELOW
 3/4/70
 SET P.K./WASHER
 9/30/92
 D.N.F.
 6/23/08



O.D.O.T. DISTRICT 2 SURVEY OFFICE

PERSONNEL

REFERENCE NO. 9

SHEET 9 OF 26

NOTES Cheney

H.C. RIPPLE

DATE 7-20-92

ROUTE SR.#101

R.C. BARBOUR

WEATHER SUNNY

COUNTY SENECA

Geyman

TEMP. 60°

TOWNSHIP CLINTON

SECTION 16

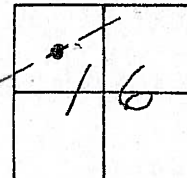
T 2 N R 15 E

TYPE MONUMENT IRON PIN SET P.K. & WASHER 9-30-92

~~ON SURFACE~~ - BELOW 4"

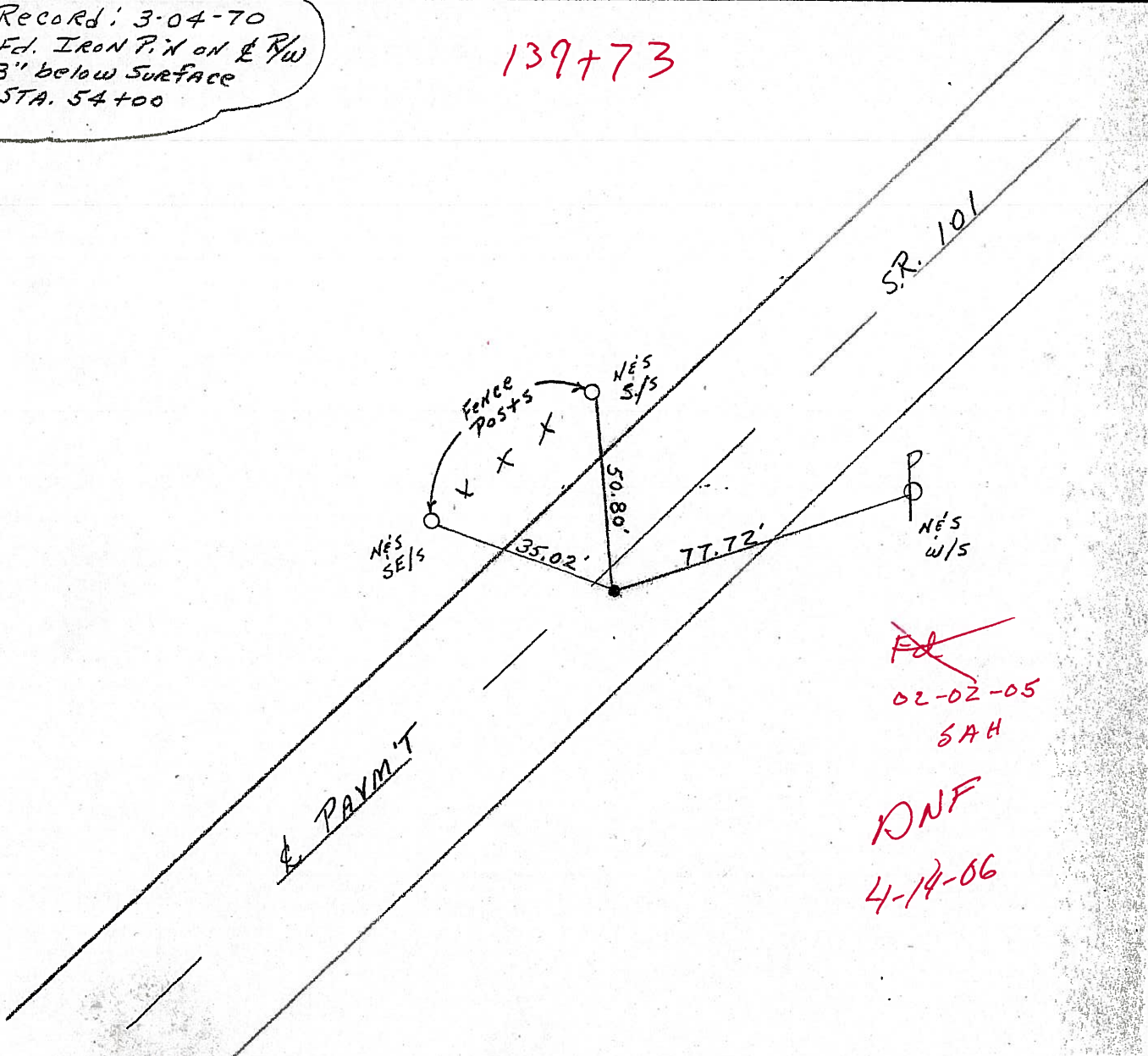
~~LEFT- & PAV'T.~~ - RIGHT 2.5'
7.5' TO RT. EDGE PAVEMENT

S.L.M. 139+84



Record: 3-04-70
Fd. IRON PIN ON E RW
3' below surface
STA. 54+00

139+73



~~FD~~
02-02-05
SAH

DNF
4-14-06

O.D.O.T. DISTRICT 2 SURVEY OFFICE

PERSONNEL

REFERENCE NO. 9

SHEET 10 OF 26

NOTES Cheney

H.C. RIPPLE

R.C. BARBOUR

Geyman

DATE 7-20-92

WEATHER SUNNY

TEMP. 60°

ROUTE SR. #101

COUNTY SENECA

TOWNSHIP CLINTON

SECTION 16

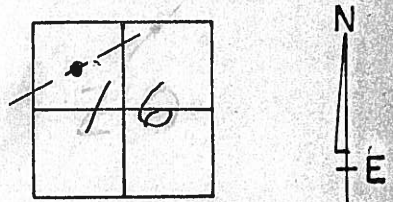
T2N R15E

TYPE MONUMENT IRON PIN SET P.K. & WASHER 9-30-92

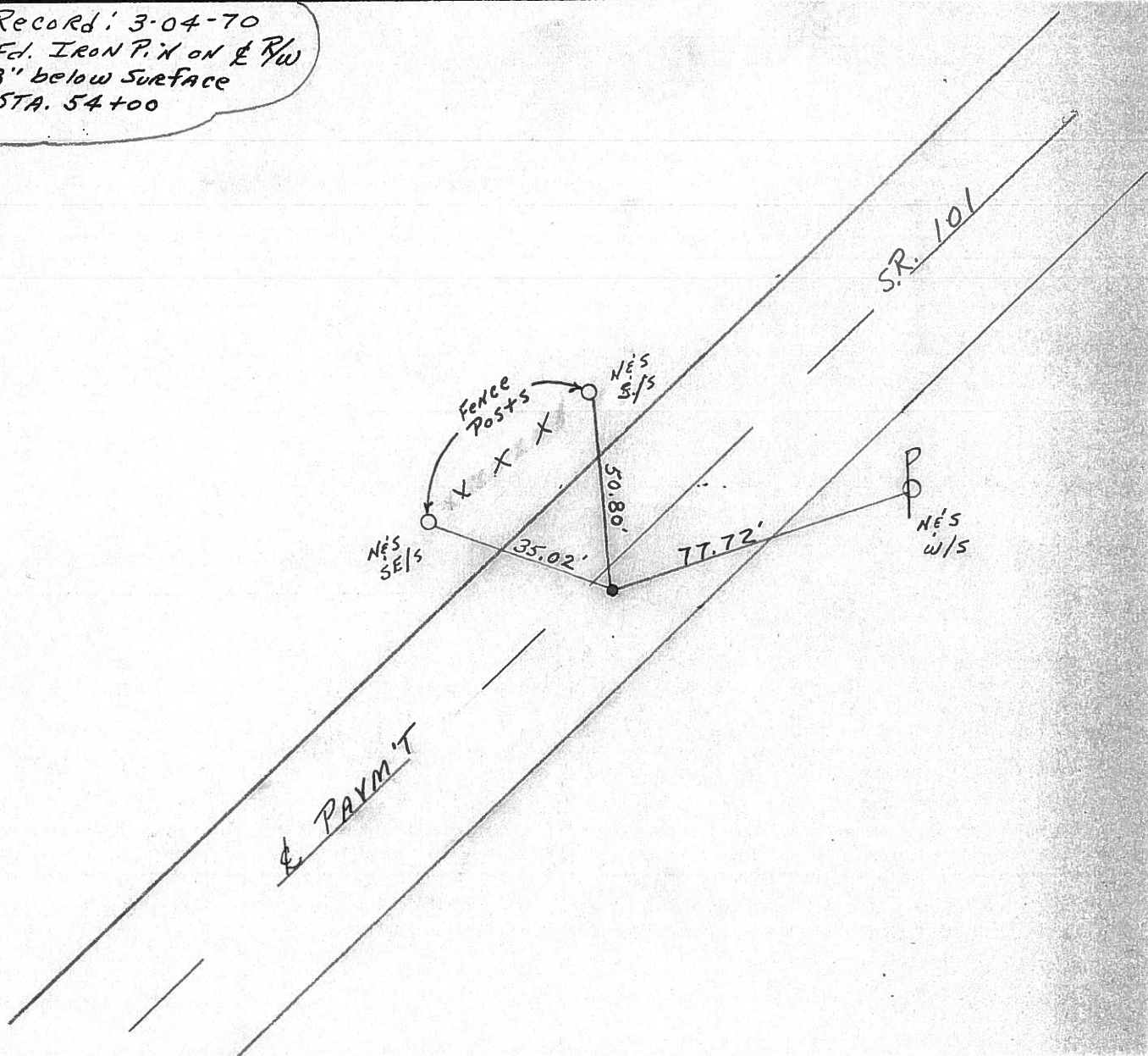
~~ON SURFACE~~ - BELOW 4"

~~LEFT~~ & PAV'T. - RIGHT 2.5'
7.5' TO RT. EDGE PAVEMENT

S.L.M. 139+84



Record: 3-04-70
 Fd. IRON PIN ON E RW
 3" below surface
 STA. 54+00



PERSONNEL TITLE PERSONNEL TITLE

SHEET NO. 2-4

COUNTY Seneca DATE 3/4/70

S. R. #101 (S.H. #271) WEATHER

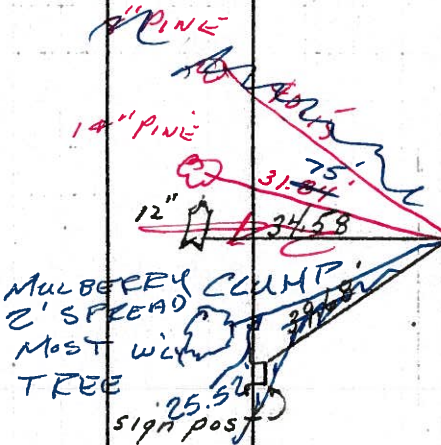
SEC. TEMP.

DESCRIPTION Ties for Control Points - Tiffin Corp. to Sandusky Co. Line JOB NO.

LEFT CENTER LINE RIGHT

7-20-1992

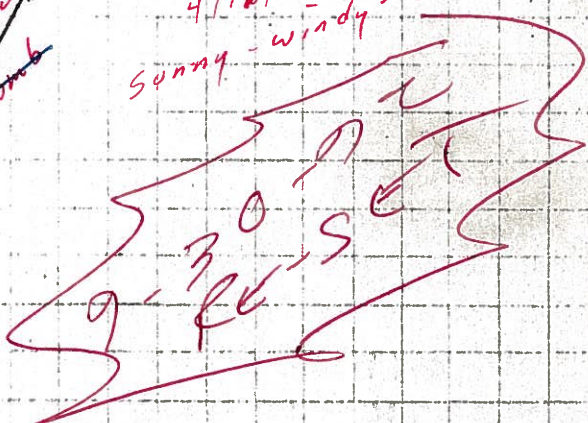
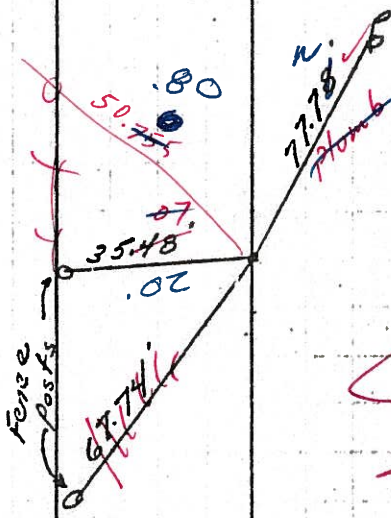
10 143+28
57+50
Iron pin on E R/W
2 1/2" below surface
8459
1' ct. E



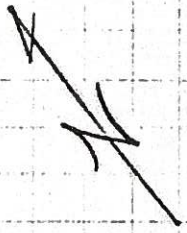
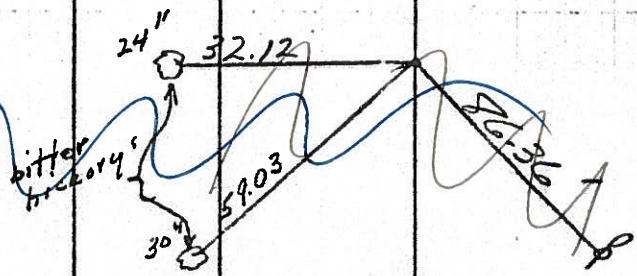
4/12/84
sunny - 50°

4/18/84
sunny - windy - 50°

9 139+84
54+00
Iron pin on E R/W
4" 3" below surface
6" 8458
2.5' RT E



36+00
R.R. Sp. on E R/W
2" below surface
8459

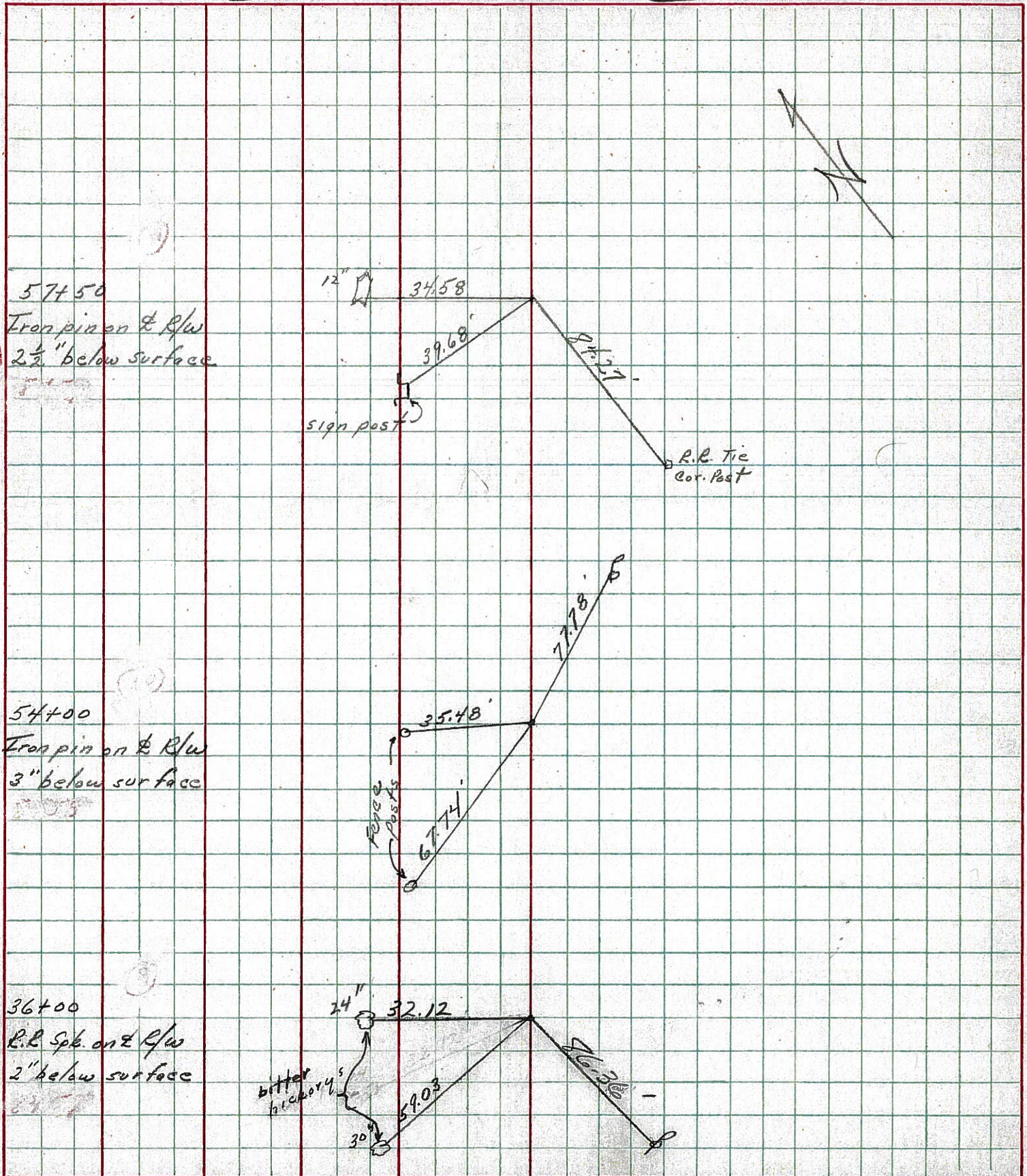


PERSONNEL	TITLE	PERSONNEL	TITLE
Cronin			
Ripple			
Geyman			
Anderson			

COUNTY Seneca DATE 3/4/70
 S. R. # 101 (S.H. #271) WEATHER _____
 SEC. _____ TEMP. _____

DESCRIPTION Ties for Control Points - Tiffin Corp. to Sandusky Co. Line JOB NO. _____

LEFT CENTER LINE RIGHT



10

9

7

57+50
 Iron pin on E R/W
 2 1/2" below surface

54+00
 Iron pin on E R/W
 3" below surface

36+00
 R.R. Spk. on E R/W
 2" below surface

12" 34.58'
 39.68'
 sign post
 R.R. Tie Cor. Post

35.48'
 67.74'
 Fence Posts

24" 32.12'
 bitter
 30" 59.03'
 26.33'

LD-9 (258-4-83)

PERSONNEL	TITLE	PERSONNEL	TITLE	COUNTY	DATE
Krabill				Seneca	
Kowalski				S. R. # 101	WEATHER
Geyman				SEC. 151+53.60	TEMP.

DESCRIPTION LEFT CENTER LINE RIGHT JOB NO.

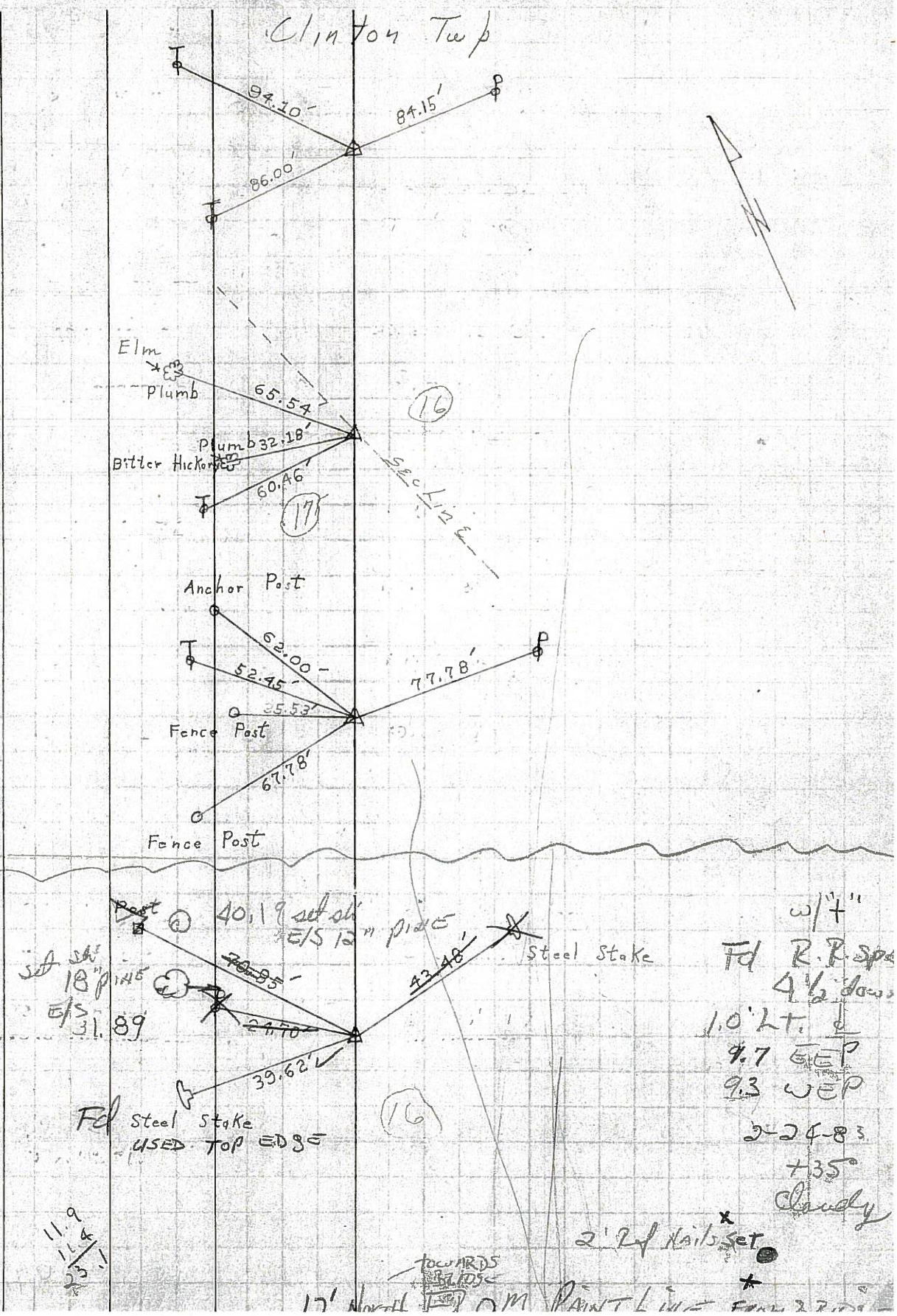
6 STA. 26+00
Iron Pin (PK)
361
2-3-64

7 STA. 36+00
P. K.
362
2-3-64

9 STA. 54+00
Iron Pin
363
2-3-64

10 STA. 57+50
Iron Pin
364
2-3-64

set small
22 spk
3-1-83

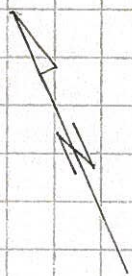
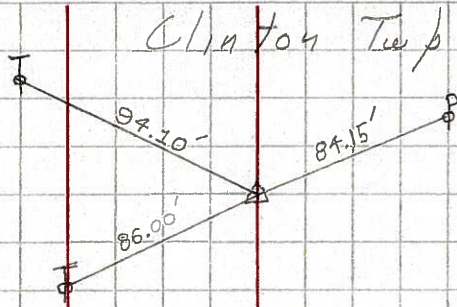


PERSONNEL	TITLE	PERSONNEL	TITLE	COUNTY	DATE
Krabill				Seneca	
Kowaleski				S. R. # 101	WEATHER
Geyman				SEC.	TEMP.

DESCRIPTION LEFT CENTER LINE RIGHT JOB NO.

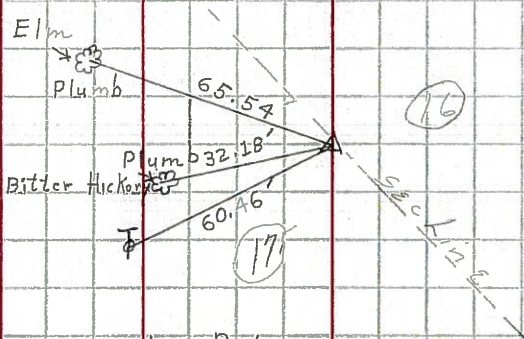
6

STA. 26+00
Iron Pin (PK)
861
2-3-64



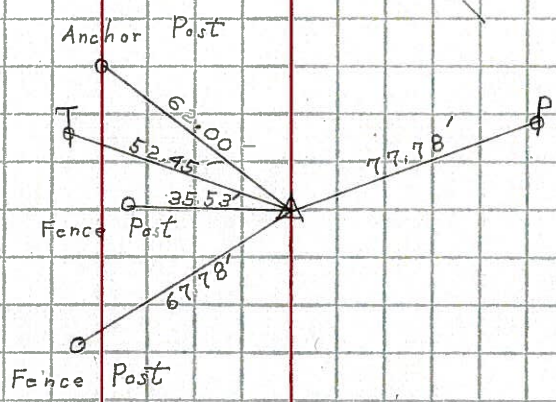
7

STA. 36+00
P.K.
362
2-3-64



9

STA. 54+00
Iron Pin
363
2-3-64



10

STA. 57+50
Iron Pin
364
2-3-64

