

O.D.O.T. DISTRICT 2 SURVEY OFFICE (USE ONLY)

PERSONNEL

REFERENCE NO. 10

SHEET 11 OF 27

NOTES SEAMAN

DATE 3/22/18

ROUTE SR 101

H.C. O'DONNELL

WEATHER SUNNY

COUNTY SENECA

R.C. SEAMAN

TEMP. 32°

TOWNSHIP CLINTON

DWG BY MILLER

PID 102817

SECTION 16

T 2 N R 15 E

TYPE MONUMENT MAG/WASHER

ON SURFACE - ~~BELOW~~ ON

OFFSET 1' LT : ~~RT~~

11.1' TO RT EDGE PAVEMENT

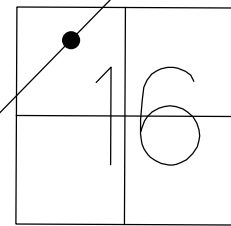
STATION: 143+28.42

HORZ. DATUM: NAD83 2011

GEOID: 2012A NAVD88

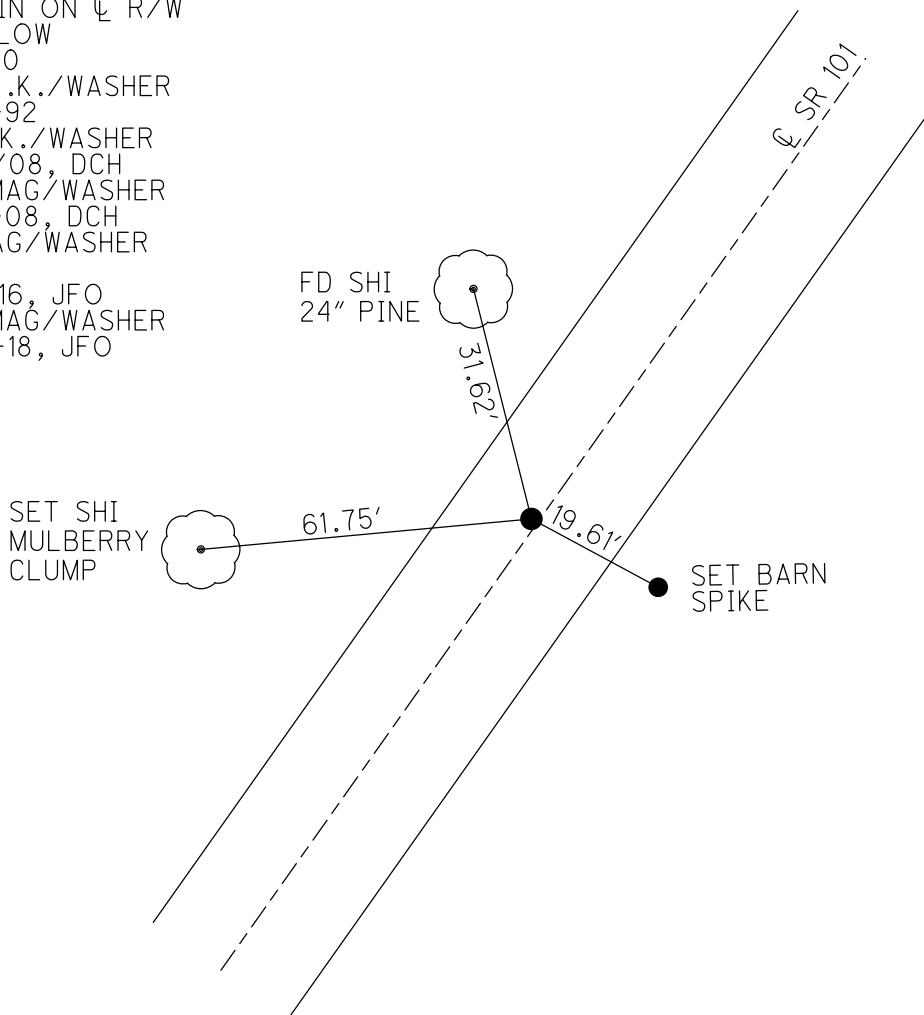
GRID: NORTHING: 535086.656

EASTING: 1790989.371



RECORD:

STA. 57+50  
 FD IPIN ON  $\varnothing$  R/W  
 2" BELOW  
 3-4-70  
 SET P.K./WASHER  
 9-30-92  
 FD P.K./WASHER  
 6/24/08, DCH  
 SET MAG/WASHER  
 9-30-08, DCH  
 FD MAG/WASHER  
 REF10  
 10-11-16, JFO  
 SET MAG/WASHER  
 10-10-18, JFO



O.D.O.T. DISTRICT 2 SURVEY OFFICE (USE ONLY)

PERSONNEL \_\_\_\_\_ REFERENCE NO. 10 SHEET 11 OF 27

NOTES HOMAN \_\_\_\_\_ DATE 6-24-08 ROUTE SR 101  
 H.C. ROUSOS \_\_\_\_\_ WEATHER SUNNY COUNTY SENECA  
 R.C. HOMAN \_\_\_\_\_ TEMP. 70° TOWNSHIP CLINTON  
 \_\_\_\_\_ SECTION 16  
 \_\_\_\_\_ T 2 N R 15 E

TYPE MONUMENT P.K./WASHER

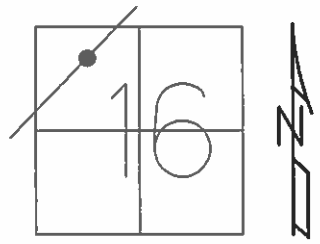
ON SURFACE - ~~BELOW~~ ON \_\_\_\_\_

LEFT - ☉ PAV'T - ~~RIGHT~~ \_\_\_\_\_ 1'

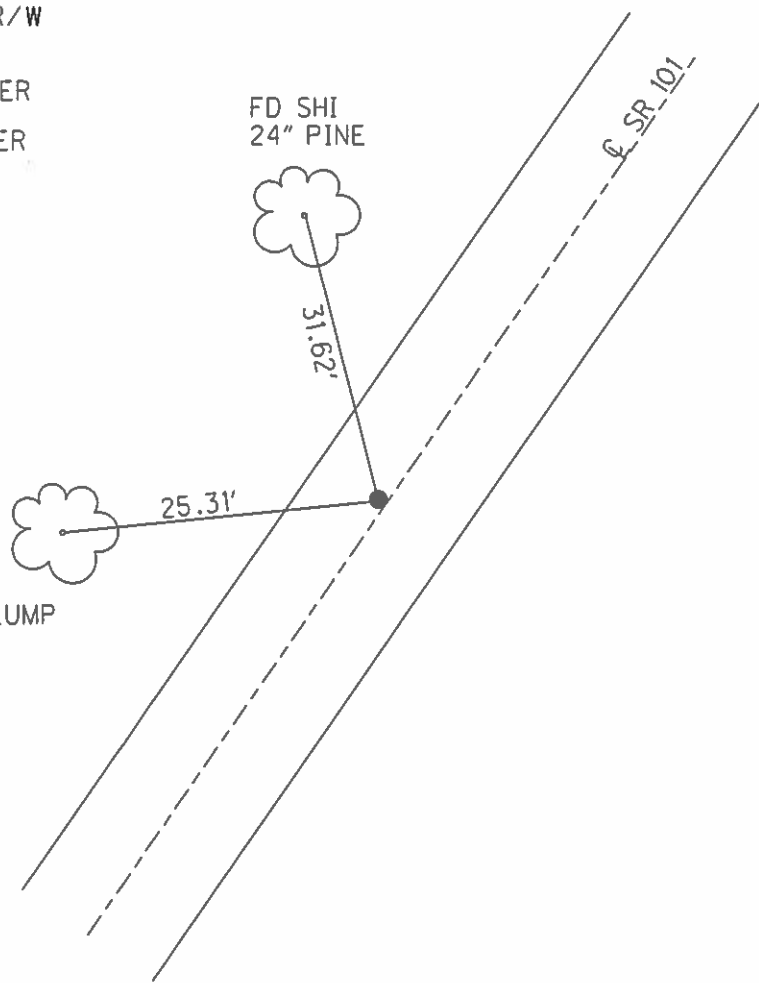
11.1' TO RT EDGE PAVEMENT

S.L.M. 143+28

GRID: NORTHING: 535086.637 EASTING: 1790989.285



RECORD:  
 STA. 57+50  
 FD IPIN ON ☉ R/W  
 2" BELOW  
 3/4/70  
 SET P.K./WASHER  
 9/30/92  
 SET MAG/WASHER  
 9/30/08, DCH



FD SHI  
 MULBERRY CLUMP

O.D.O.T. DISTRICT 2 SURVEY OFFICE

PERSONNEL

REFERENCE NO. 10

SHEET 11 OF 27

NOTES CHENEY

DATE 7/20/92

ROUTE SR 101

H.C. RIPPLE

WEATHER SUNNY

COUNTY SENECA

R.C. BARBOUR

TEMP. 60°

TOWNSHIP CLINTON

GEYMAN

SECTION 16

T 2 N R 15 E

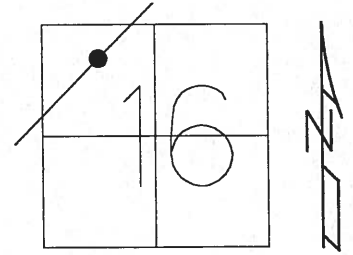
TYPE MONUMENT P.K./WASHER

ON SURFACE - ~~BELOW~~ ON

LEFT - C PAV'T - ~~RIGHT~~ 1'

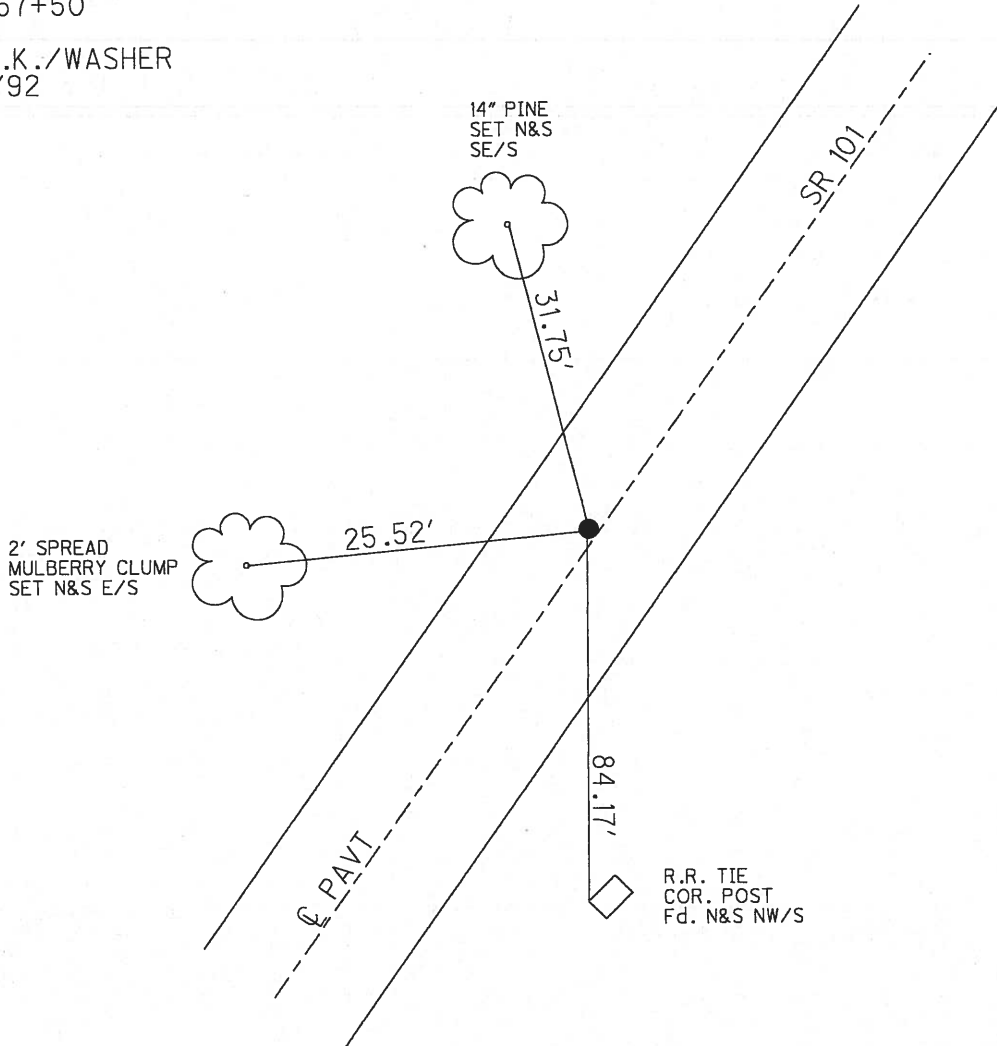
11.1' TO RT EDGE PAVEMENT

S.L.M. 143+28



Record: 3-4-70  
Fd. Iron Pin on C.L. R/W  
2 1/2" below surface  
STA. 57+50

SET P.K./WASHER  
9/30/92



O.D.O.T. DISTRICT 2 SURVEY OFFICE

PERSONNEL

REFERENCE NO. 10

SHEET 10 OF 26

NOTES Cheney

H.C. Ripplé

DATE 7-20-92

ROUTE SR# 101

R.C. BARBOUR

WEATHER SUNNY

COUNTY Seneca

Geyman

TEMP. 60°

TOWNSHIP CLINTON

SECTION 16

T2 N R 15 E

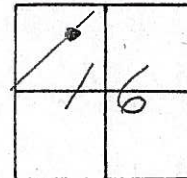
TYPE MONUMENT P.K. / WASHER SET P.K. WASHER 9-30-92

ON SURFACE - BELOW yes

LEFT- & PAV'T. - RIGHT 1'

11.1 TO RT. EDGE PAVEMENT

S.L.M. 143+28



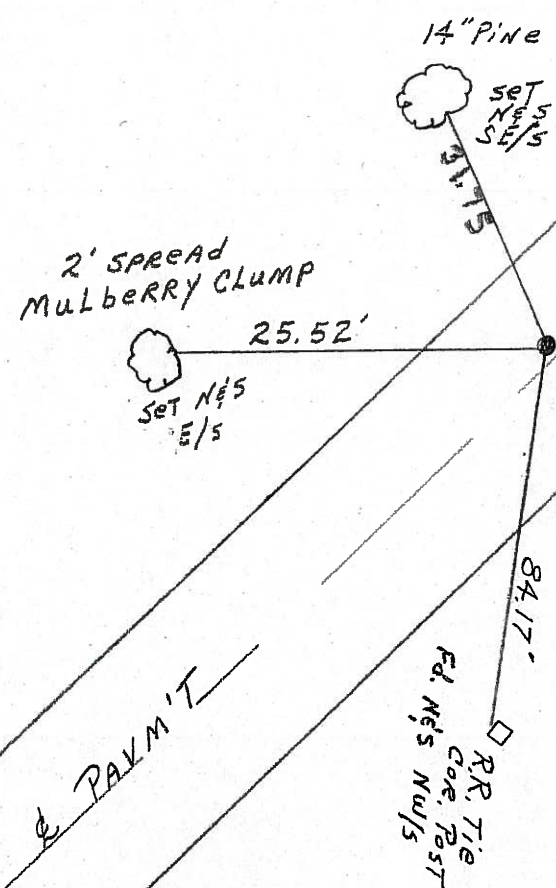
Record: 3-4-70 Fd.  
Iron Pin on & R/W  
2 1/2" below surface  
STA. 57+50

143+18

SU 9  
4-14-06

SR: 101

Fd  
02-02-05  
SAH



# O.D.O.T. DISTRICT 2 SURVEY OFFICE

PERSONNEL

REFERENCE NO. 10

SHEET 10 OF 26

NOTES Cheney

H.C. RIPPLE

DATE 7-20-92

ROUTE SR# 101

R.C. BARBOUR

WEATHER SUNNY

COUNTY Seneca

Geyman

TEMP. 60°

TOWNSHIP CLINTON

SECTION 16

T2 N R 15 E

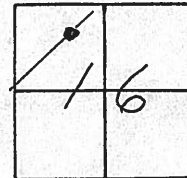
TYPE MONUMENT P.K. / WASHER set P.K. washer 9-30-92

ON SURFACE - BELOW yes

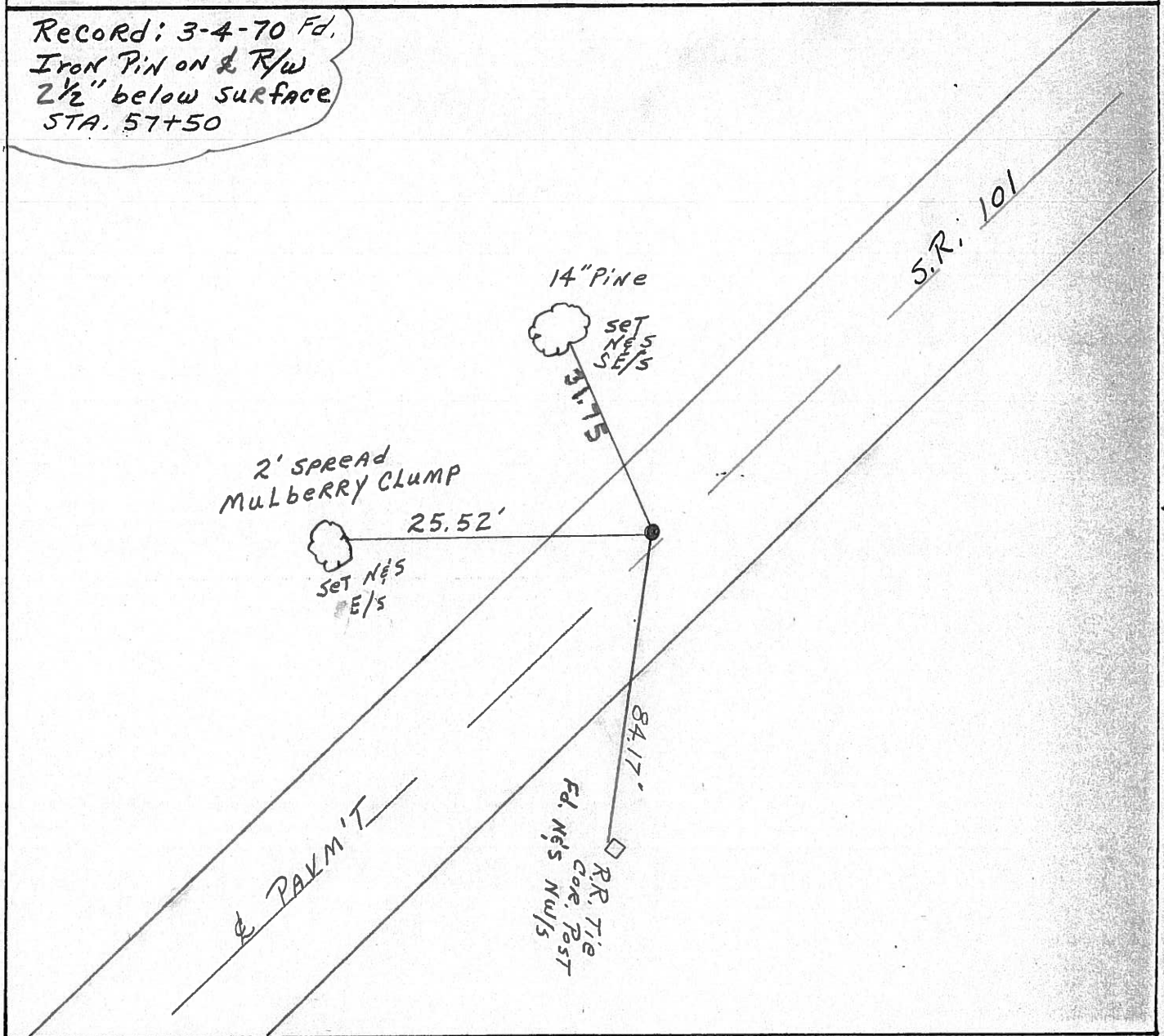
LEFT- & PAV'T. - RIGHT 1'

1/2 TO RT. EDGE PAVEMENT

S.L.M. 143+28



Record: 3-4-70 Fd.  
Iron Pin on & R/W  
2 1/2" below surface  
STA. 57+50



PERSONNEL TITLE PERSONNEL TITLE

COUNTY Seneca DATE 3/4/70

S. R. # 101 (S.H. #271) WEATHER

SEC. \_\_\_\_\_ TEMP. \_\_\_\_\_

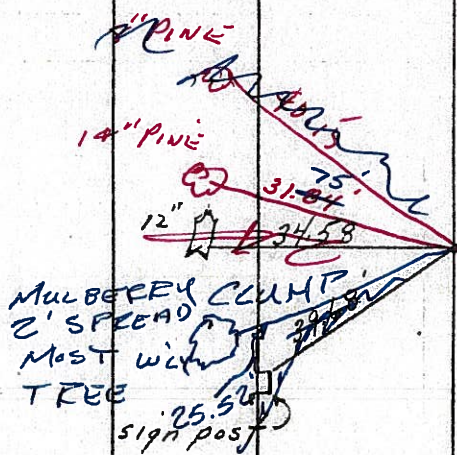
DESCRIPTION Ties for Control Points - Tiffin Corp. to Sandusky R. Line JOB NO. \_\_\_\_\_

LEFT CENTER LINE RIGHT

7-20-1992

10

143+28  
57+50  
Iron pin on E R/W  
2 1/2" below surface  
8459  
1' Lt. &

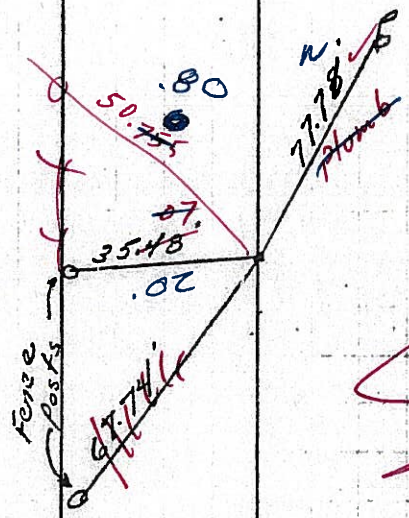


4/12/84  
Sunny - 50°

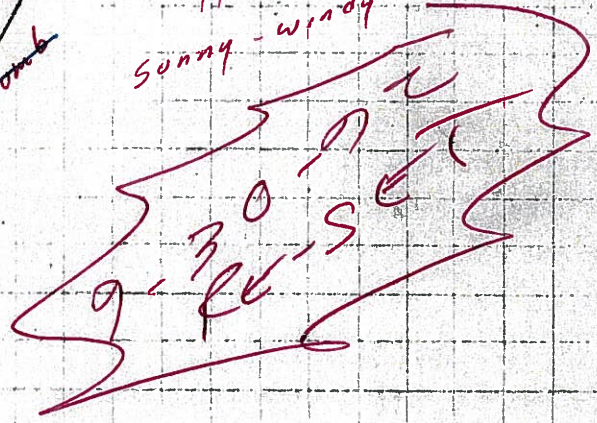
R.R. Tie  
Cor. Post

9

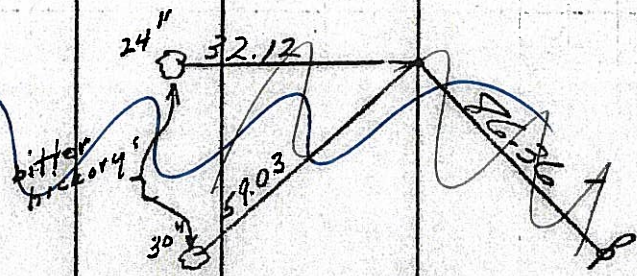
139+84  
54+00  
Iron pin on E R/W  
4" below surface  
8458  
2.5' RT &



4/18/84  
Sunny - windy - 50°



36+00  
R.R. Sp. on E R/W  
2" below surface  
8457



County SENECA S.R. 101

Date FEB 24, 83

Township CLINTON

Weather Cloudy

Section 16

Temp. +35°

T N, R E

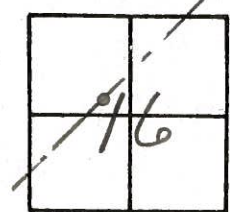
Personnel HOFFMAN

LOEHRKE

HOUSEHOLDER



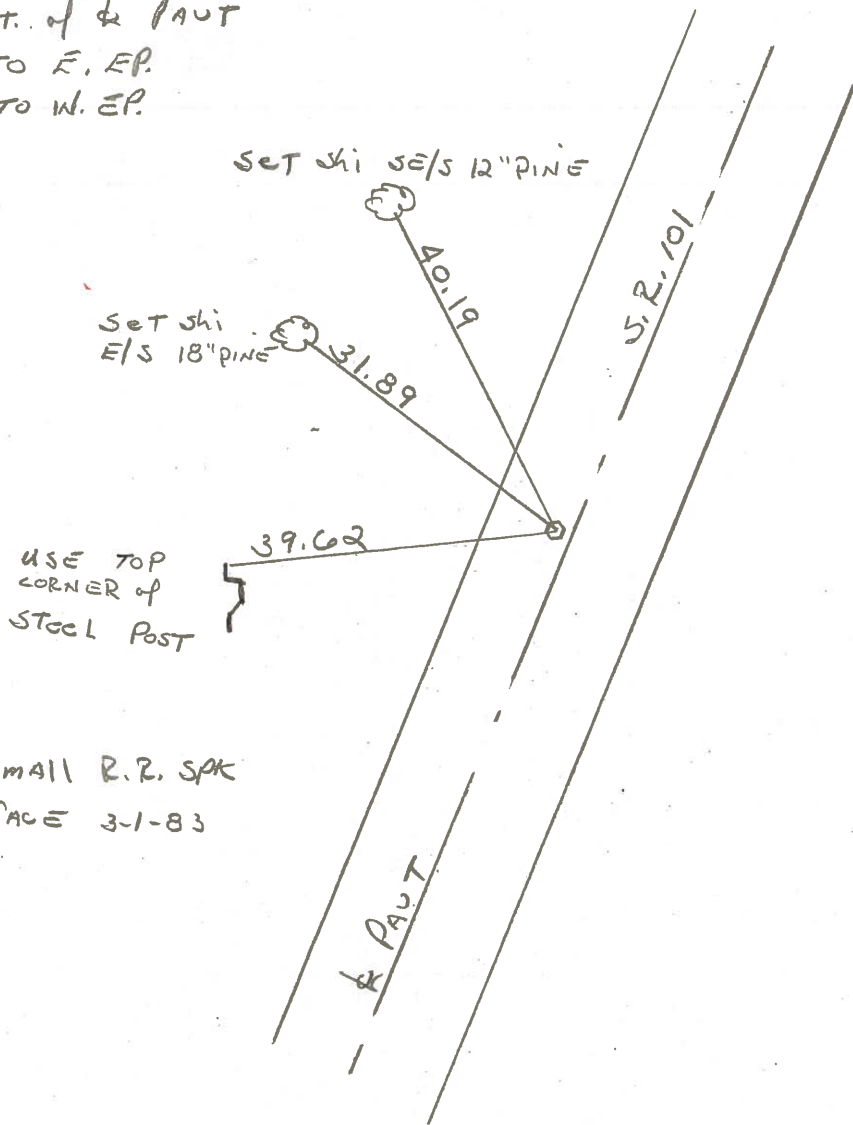
~~#17~~  
**(10)**

Fd R.R. SPK 4 1/2" Below Surface w/ "+"

1925 PLAN STA 57+50  
SLM STA. 144+79.42

FROM 1964 REF TIES

- 1.0' LT. of & PAUT
- 9.7' TO E. EP.
- 9.3' TO W. EP.



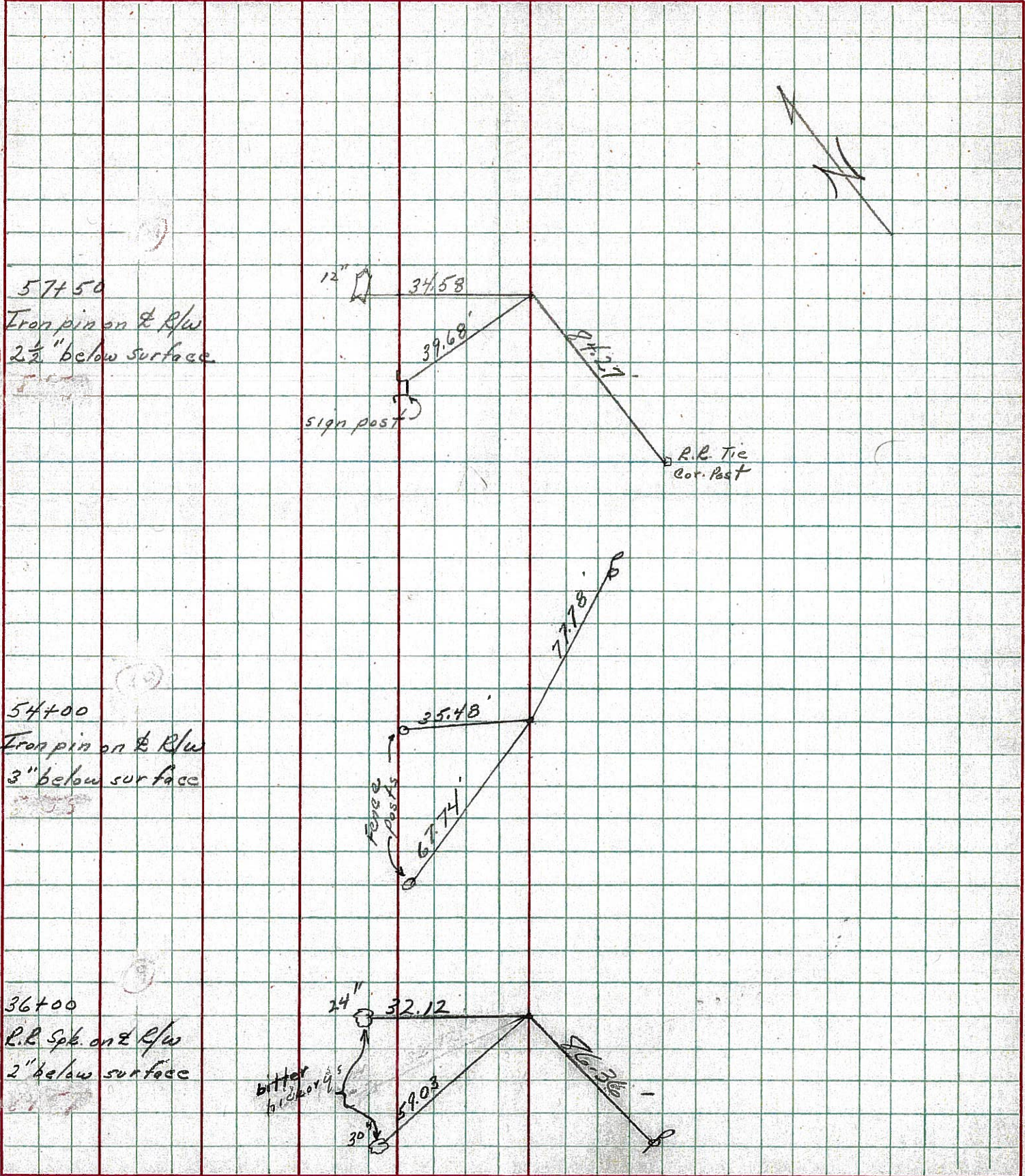
USE TOP CORNER of STEEL POST

Set small R.R. SPK ON SURFACE 3-1-83

PERSONNEL	TITLE	PERSONNEL	TITLE
Cronin			
Ripple			
Geyman			
Anderson			

COUNTY Seneca DATE 3/4/70  
 S. R. # 101 (S.H. #271) WEATHER \_\_\_\_\_  
 SEC. \_\_\_\_\_ TEMP. \_\_\_\_\_

DESCRIPTION Ties for Control Points - Tiffin Corp. to Sandusky Co. Line JOB NO. \_\_\_\_\_  
 LEFT CENTER LINE RIGHT



10

9

7



PERSONNEL TITLE PERSONNEL TITLE

COUNTY Schenectady DATE

Krabill

S. R. # 101 WEATHER

Kowaleski

SEC. 151+53.60 TEMP.

Geyman

DESCRIPTION LEFT CENTER LINE RIGHT JOB NO.

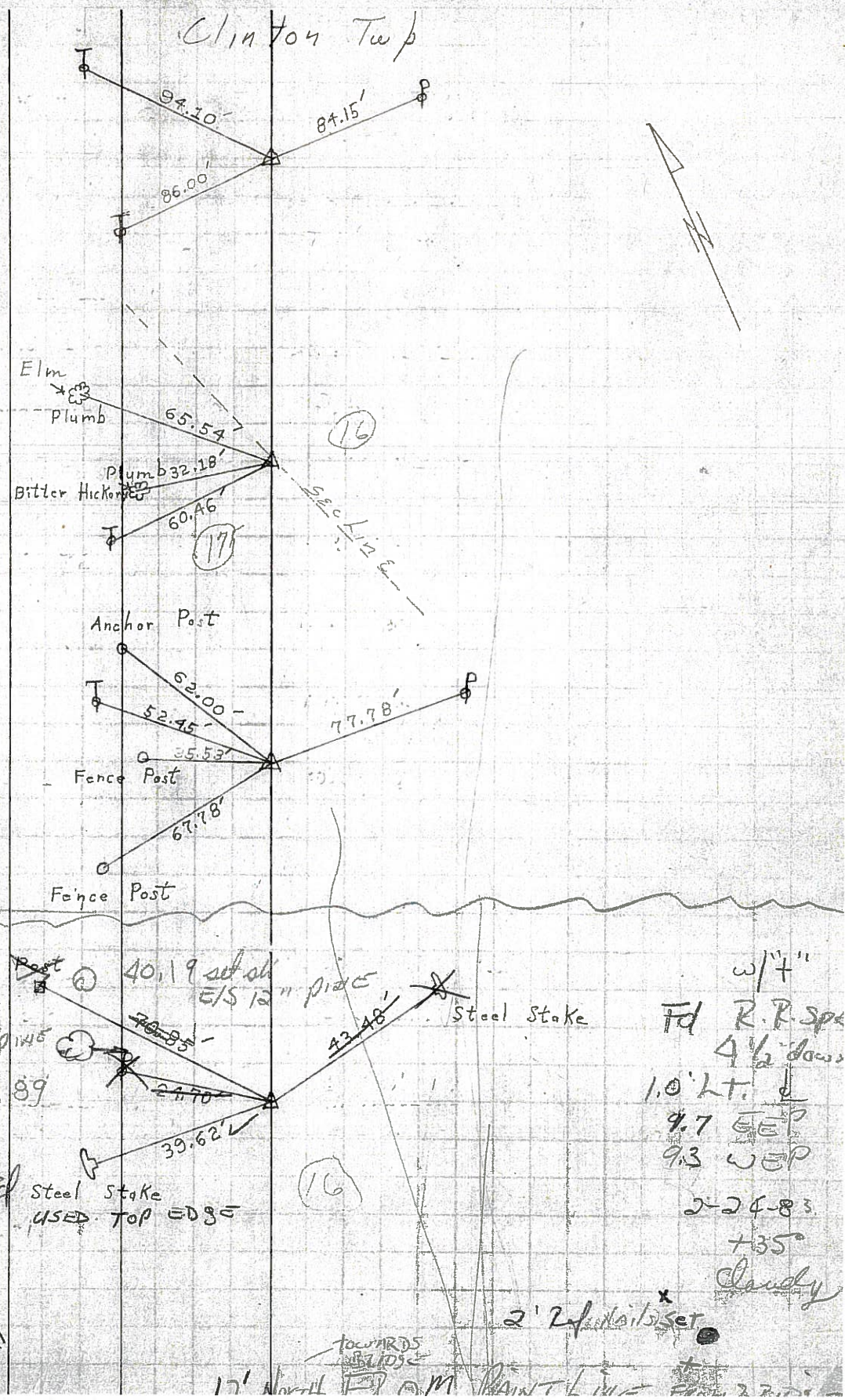
⑥ STA. 26+00  
Iron Pin (PK)  
# 361  
2-3-64

⑦ STA. 36+00  
P. K.  
# 362  
2-3-64

⑨ STA. 54+00  
Iron Pin  
# 363  
2-3-64

⑩ STA. 57+50  
Iron Pin  
# 364  
2-3-64

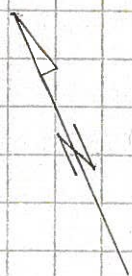
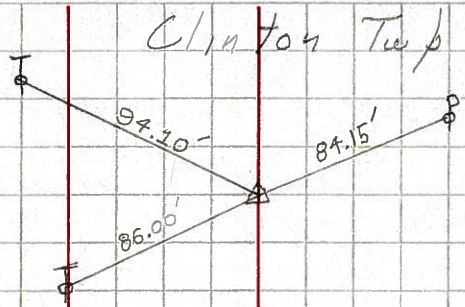
set small  
22 ppl  
3-1-83



PERSONNEL	TITLE	PERSONNEL	TITLE	COUNTY	DATE
Krabill				Seneca	
Kowalski				S. R. # 101	WEATHER
Geyman				SEC.	TEMP.
DESCRIPTION					JOB NO.
	LEFT	CENTER LINE	RIGHT		

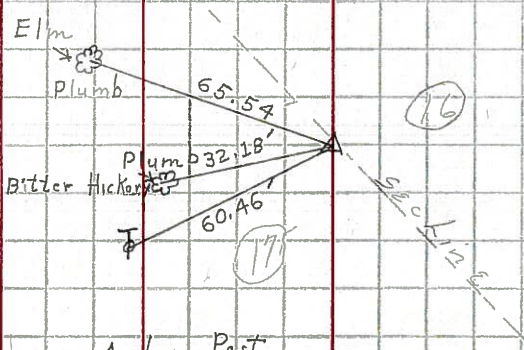
6

STA. 26+00  
 Iron Pin (PK)  
 # 361  
 2-3-64



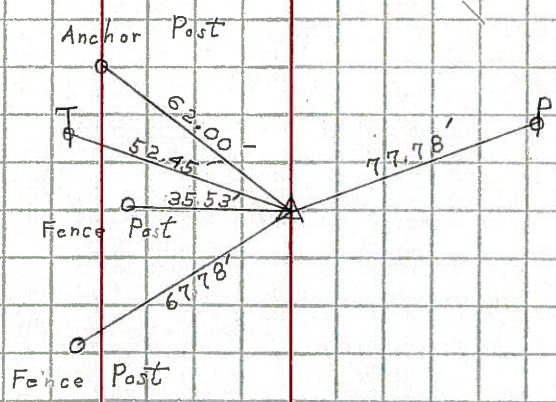
7

STA. 36+00  
 P.K.  
 # 362  
 2-3-64



9

STA. 54+00  
 Iron Pin  
 # 363  
 2-3-64



10

STA. 57+50  
 Iron Pin  
 # 364  
 2-3-64

