

O.D.O.T. DISTRICT 2 SURVEY OFFICE (USE ONLY)

PERSONNEL

REFERENCE NO. 11

SHEET 12 OF 27

NOTES SEAMAN

DATE 3/22/18

ROUTE SR 101

H.C. O'DONNELL

WEATHER SUNNY

COUNTY SENECA

R.C. SEAMAN

TEMP. 34°

TOWNSHIP CLINTON

SECTION 16

DWG BY MILLER

PID 102817

T 2 N R 15 E

TYPE MONUMENT MAG/WASHER

ON SURFACE - ~~BELOW~~ ON

OFFSET Q PAVEMENT 3.5' LT : ~~RT~~

6.6' TO LT EDGE PAVEMENT

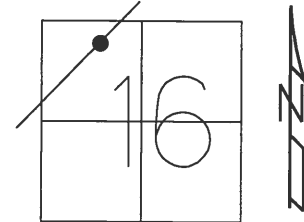
STATION: 152+67.03

HORZ. DATUM: NAD83 2011

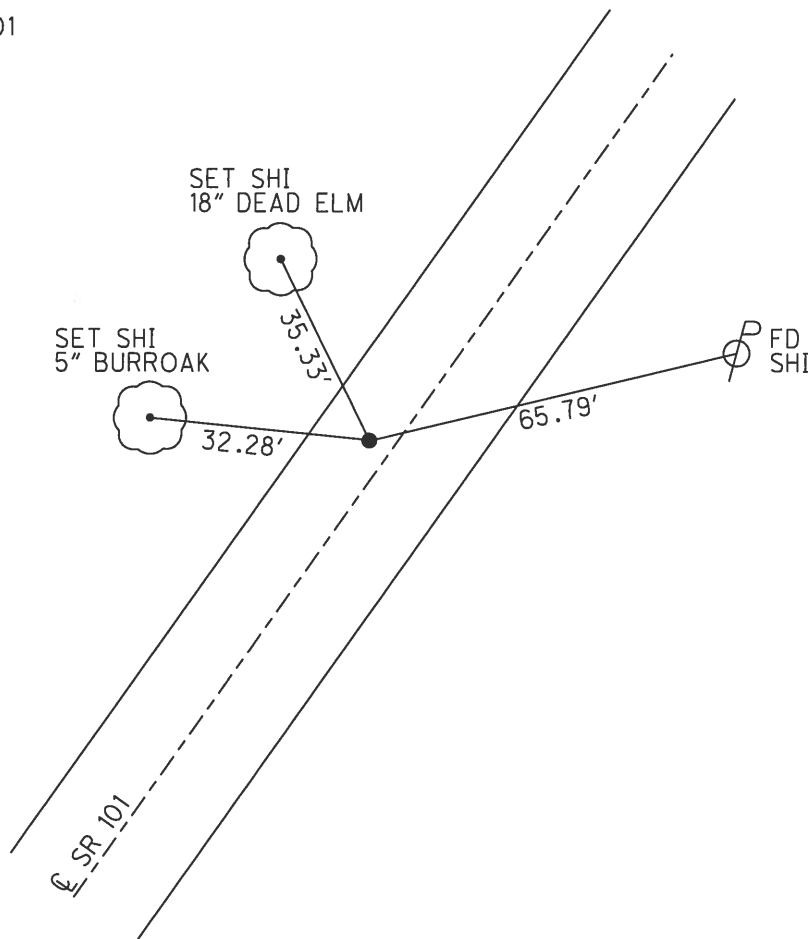
GEOID: 2012A NAVD88

GRID: NORTHING: 535724.470

EASTING: 1791677.976



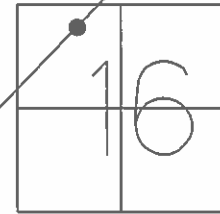
RECORD: P.T.  
 STA. 67+27.31 SR 101  
 FD R.R. SPIKE  
 2" BELOW  
 3-11-70  
 SET P.K./WASHER  
 9-30-92  
 FD SM.R.R.SPIKE  
 1.5" DOWN  
 6/24/08, DCH  
 SET MAG/WASHER  
 9-30-08, DCH  
 FD MAG SHANK  
 REF11  
 10-11-18, JFO  
 SET MAG/WASHER  
 10-10-18, JFO



O.D.O.T. DISTRICT 2 SURVEY OFFICE (USE ONLY)

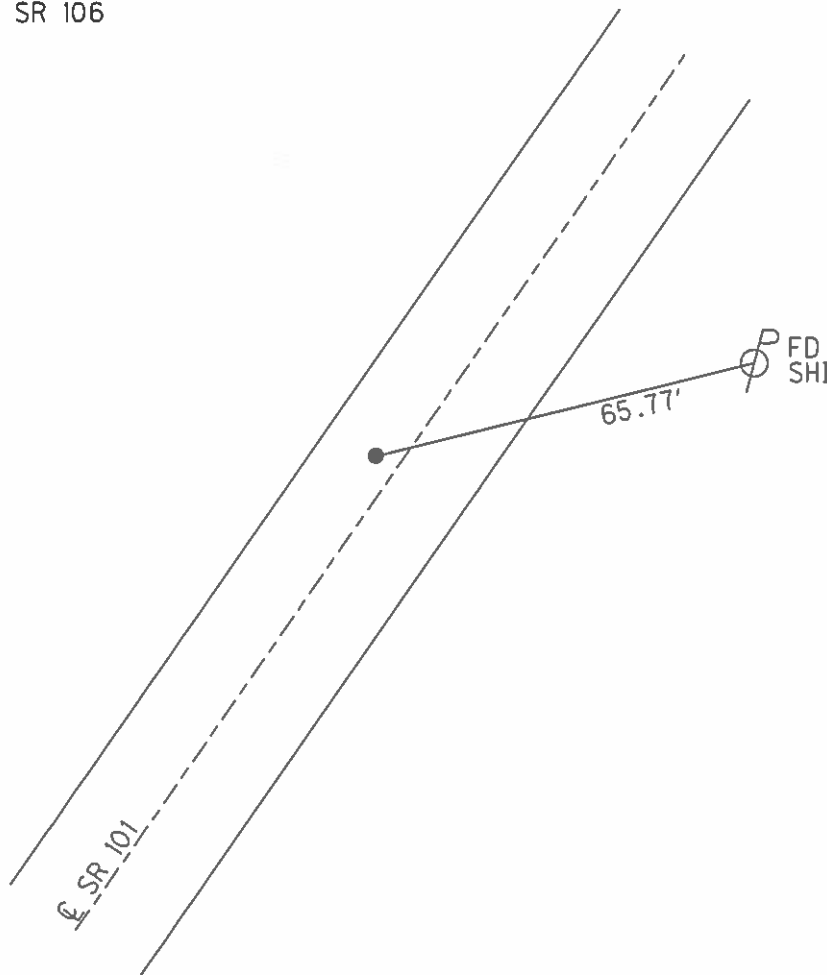
PERSONNEL \_\_\_\_\_ REFERENCE NO. 11 SHEET 12 OF 27  
NOTES HOMAN DATE 6-24-08 ROUTE \_\_\_\_\_  
H.C. ROUSOS WEATHER SUNNY COUNTY SENECA  
R.C. HOMAN TEMP. 75° TOWNSHIP CLINTON  
SECTION 16  
T 2 N R 15 E

TYPE MONUMENT SM.R.R.SPIKE  
~~ON SURFACE~~ - BELOW 1.5"  
LEFT - Q PAV'T - ~~RIGHT~~ 3.5'  
6.6' TO LT EDGE PAVEMENT  
S.L.M. 152+67



GRID: NORTHING: 535724.602 EASTING: 1791677.825

RECORD: P.T.  
STA. 67+27.31 SR 101  
STA. 67+28.20 PROP SR 106  
R.R. SPIKE  
2" BELOW  
3/11/70  
SET P.K./WASHER  
9/30/32  
SET MAG/WASHER  
9/30/08, DCH



# O.D.O.T. DISTRICT 2 SURVEY OFFICE

PERSONNEL

REFERENCE NO. 11

SHEET 12 OF 27

NOTES CHENEY

DATE 7/20/92

ROUTE SR 101

H.C. RIPPLE

WEATHER SUNNY

COUNTY SENECA

R.C. BARBOUR

TEMP. 60°

TOWNSHIP CLINTON

GEYMAN

SECTION 16

T 2 N R 15 E

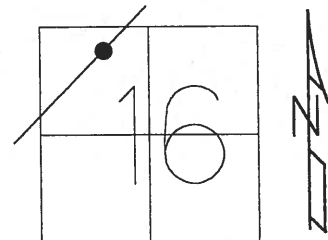
TYPE MONUMENT SM.R.R.SPIKE

ON SURFACE - ~~BELOW~~ ON

LEFT - Q PAV'T - ~~RIGHT~~ 3.5'

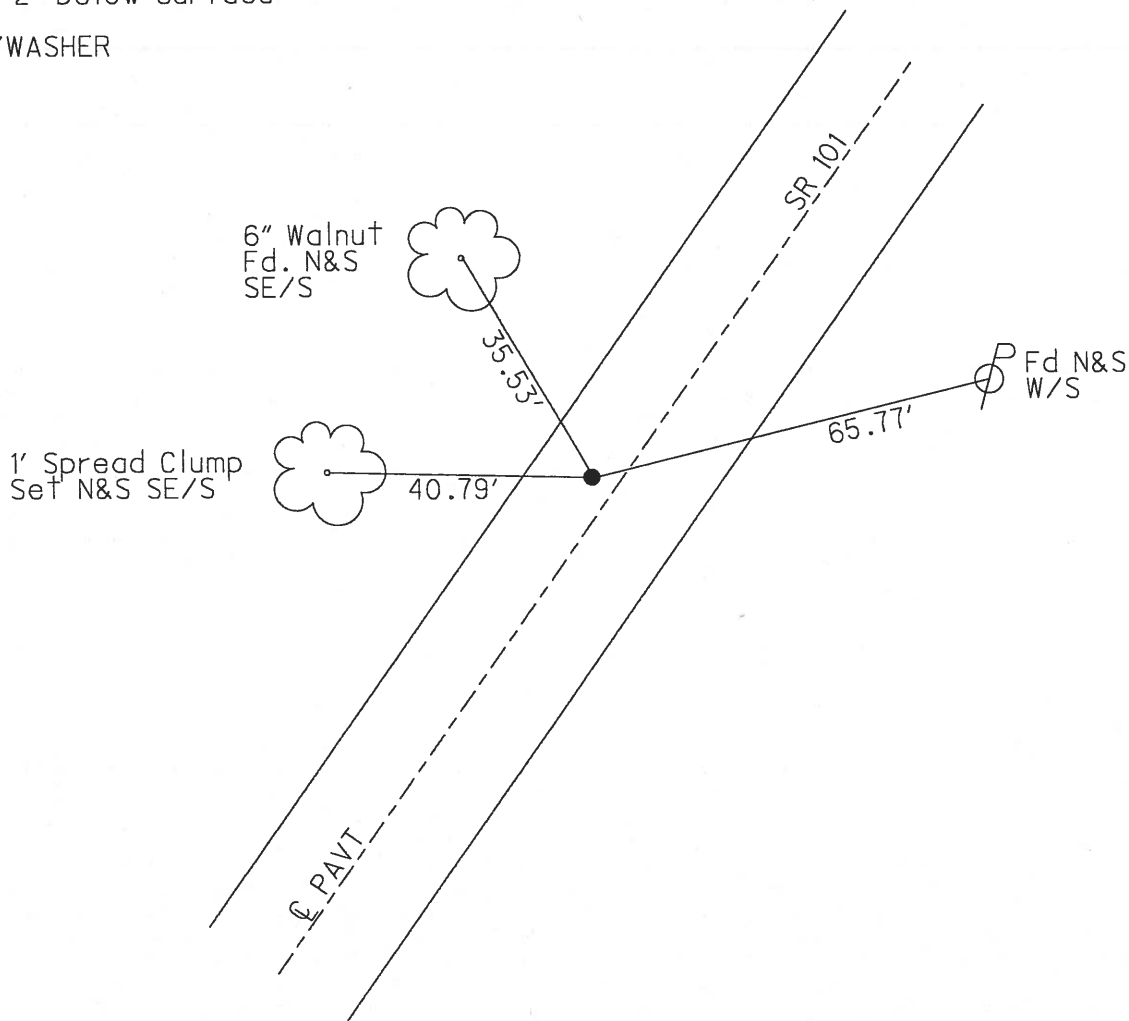
6.6' TO LT EDGE PAVEMENT

S.L.M. 152+67



Record: 3-11-70  
 P.T. STA. 67+27.31 SR # 101 =  
 67+28.20 Prop SR # 106  
 R.R. spk. 2" below surface

SET P.K./WASHER  
 9/30/32



O.D.O.T. DISTRICT 2 SURVEY OFFICE

PERSONNEL

REFERENCE NO. 11

SHEET 11 OF 26

NOTES Cheney

H.C. RIPPLE

R.C. BARBOUR

GEYMAN

DATE 7-20-92

WEATHER SUNNY

TEMP. 60°

ROUTE SR#101

COUNTY Seneca

TOWNSHIP CLINTON

SECTION 16

T 2 N R 15 E

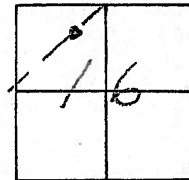
TYPE MONUMENT SMALL R.R. SPK SET 7K. WASHER 9-30-92

ON SURFACE - BELOW yes

LEFT - 0 PAV'T. - RIGHT 3.5'

6.6 TOHT. EDGE PAVEMENT

S.L.M. 152+67



Record: 3-11-70  
 P.T. STA. 67+27.31 SR#101 =  
 67+28.20 Prop. SR#106  
 R.R. SPK. 2" below surface

152+56

SVID  
 4-14-06

SR. 101

6" WALNUT  
 Fd. N&S  
 SE/S

1' SPREAD  
 CLUMP

40.79'  
 SET N&S  
 E/S

35.53'

65.77'  
 Fd N&S  
 W/S

Fd  
 02-02-05  
 SAH

PAV'T.

# O.D.O.T. DISTRICT 2 SURVEY OFFICE

PERSONNEL

REFERENCE NO. 11

SHEET 12 OF 26

NOTES Cheney

H.C. Ripple

R.C. BARBOUR

Geyman

DATE 7-20-92

WEATHER SUNNY

TEMP. 60°

ROUTE SR#101

COUNTY Seneca

TOWNSHIP CLINTON

SECTION 16

T2 N R 15 E

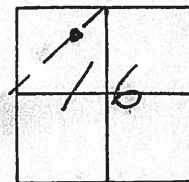
TYPE MONUMENT SMALL R.R. SPK SET PK. & washer 9-30-92

ON SURFACE - BELOW yes

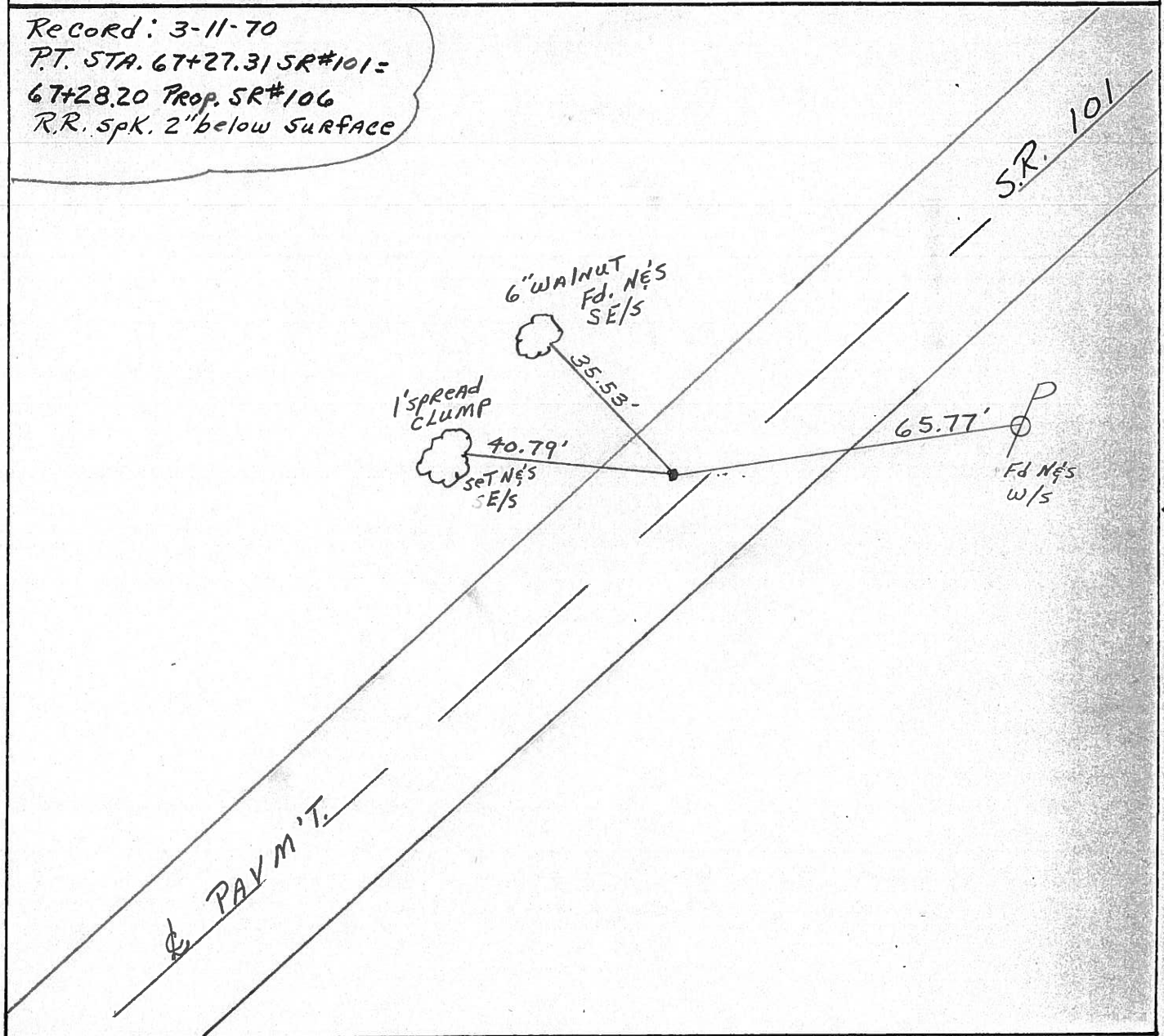
LEFT- & PAV'T. - RIGHT 3.5'

6.6 TO HT. EDGE PAVEMENT

S.L.M. 152+67



Record: 3-11-70  
 P.T. STA. 67+27.31 SR#101 =  
 67+28.20 Prop. SR#106  
 R.R. spk. 2" below surface



PERSONNEL TITLE PERSONNEL TITLE

COUNTY Seneca DATE 3/11/70

Ash  
Cronin  
Ripple  
Seyman

S. R. 401 (TCH #271) WEATHER sunny

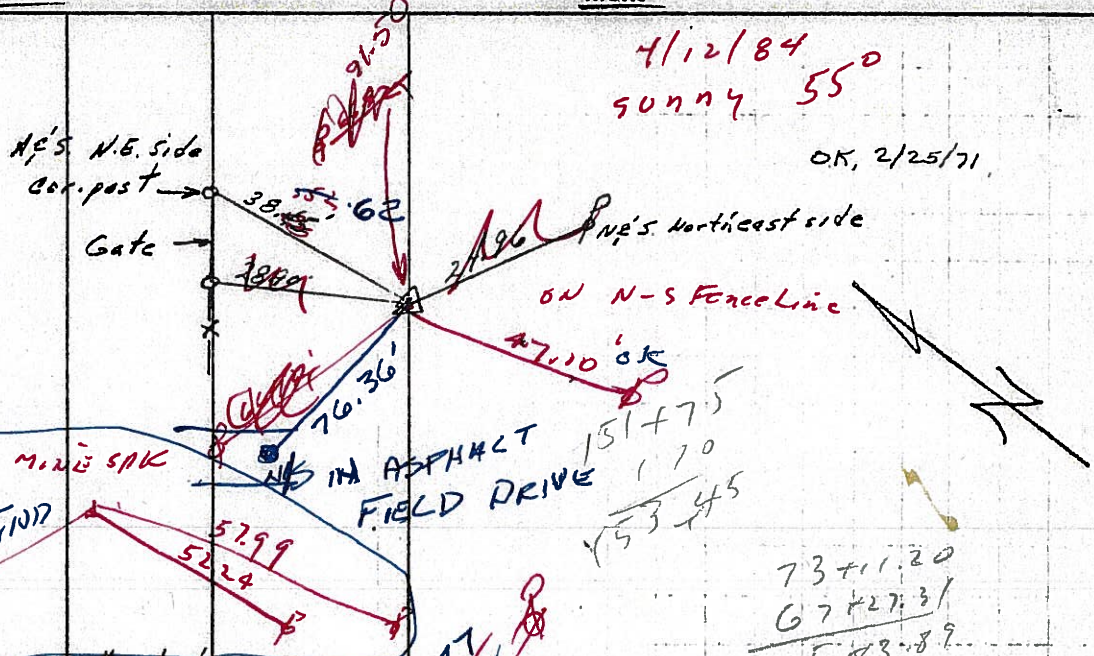
SEC I-K-O-J TEMP 30°

DESCRIPTION Ties for Control Points - Ties in Corp to Sand. Co. Line JOB NO.

LEFT CENTER LINE RIGHT

12

7-20-199  
SUNNY 75°  
CH &  
E-H. TAPE  
G-E. TAPE  
 $\Delta = 0^\circ - 37' Lt.$   
P.I. 158+75  
73+11.20 P.K. & washer  
Fd. Iron pin 2 1/2" below  
surface 3/10/70  
2' R.R.



4/12/84  
sunny 55°

OK, 2/25/71

7

?? 4' H. &  
DID NOT  
wood post  
58.09



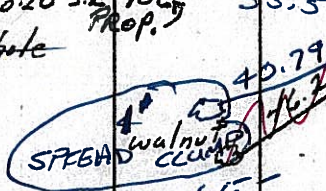
67+27.31  
64+57.40  
2+28.91  
151+75  
154+44.91  
5+83.59  
160+28.80

73+11.20  
67+27.31  
5+83.89

OK, 2/25/71

1

P.T. 152+67  
67+27.31 S.R. 101 = 67.28.20 S.R. 106 Prop.  
R.R. spike with punch hole  
2" below surface  
3.5' EOK

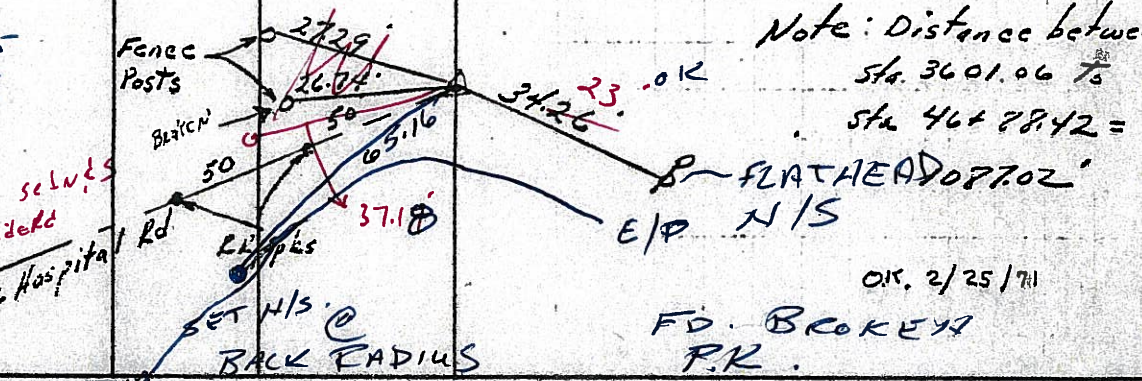


RESET  
30-92

OK, 2/25/71

8

$\Delta = 0^\circ - 32' Lt.$   
P.I.  
46+88.42 132+55  
Fd. Harrow tooth  
3" below surface  
3/11/70  
FD P.K.



OK, 2/25/71

County SENECA S.R. 101

Date MARCH 1, 83

Township CLINTON

Weather CLEAR

Section 16

Temp. +45°

T\_N, R\_E

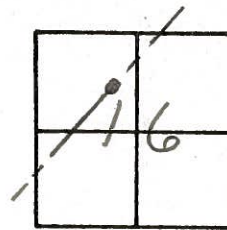
Personnel HOFFMAN

LOEMER

HOUSEHOLDER



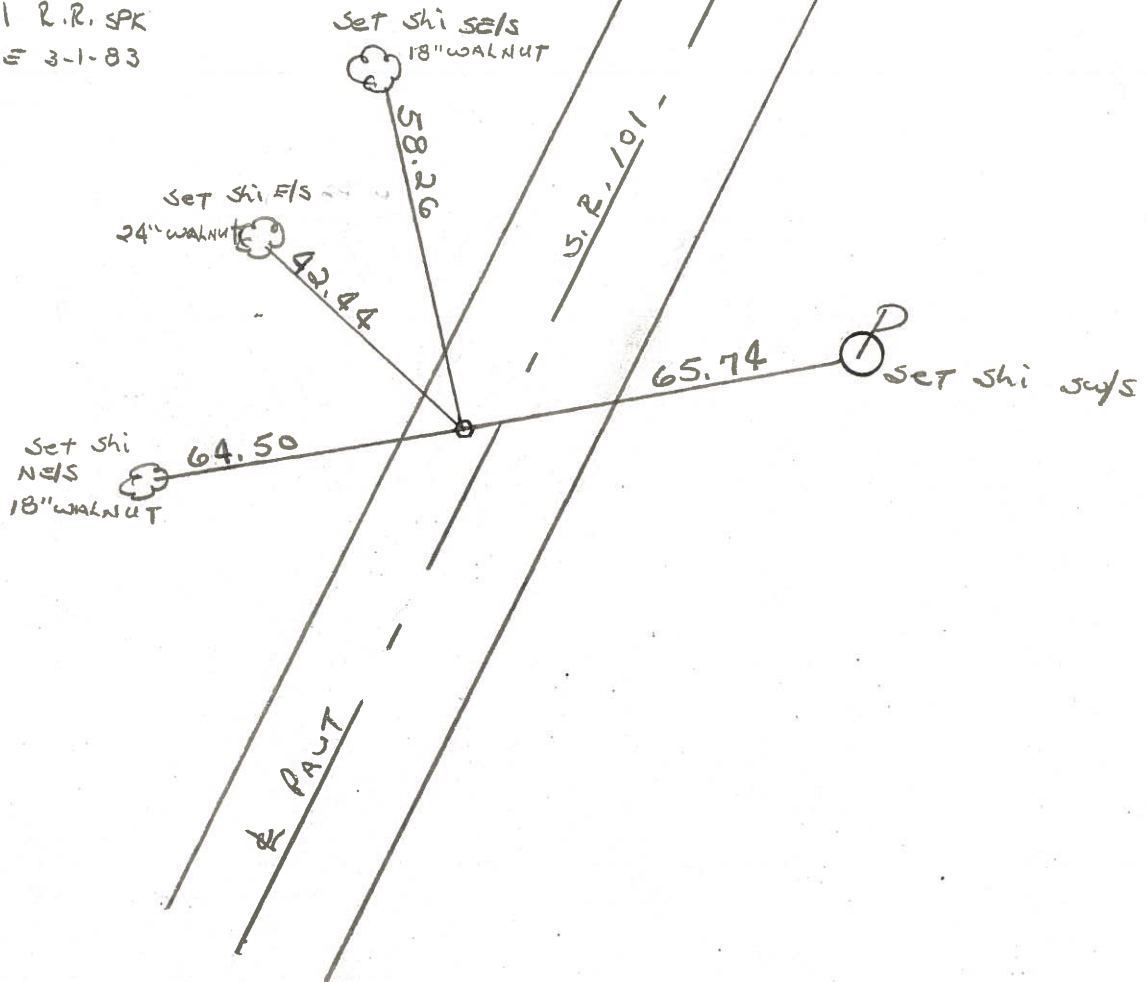
~~II~~

Fd R.R. SPK / PUNCH HOLES 3" Below Surface  
FROM 1970 REF TIES

1925 PLAN STA 67+00  
SLM STA. 154+18.50

2.6' Lt. of & PAUT  
6.8' TO W.E.P.  
12.8' TO E.E.P.

Set SMALL R.R. SPK  
ON SURFACE 3-1-83



PERSONNEL TITLE PERSONNEL TITLE

Ash

COUNTY Seneca

DATE 3/11/70

Cronin

S. R. #101 (I.C.H. #271)

WEATHER Sunny

Ripple

SEC. I-K-O-J

TEMP. 30°

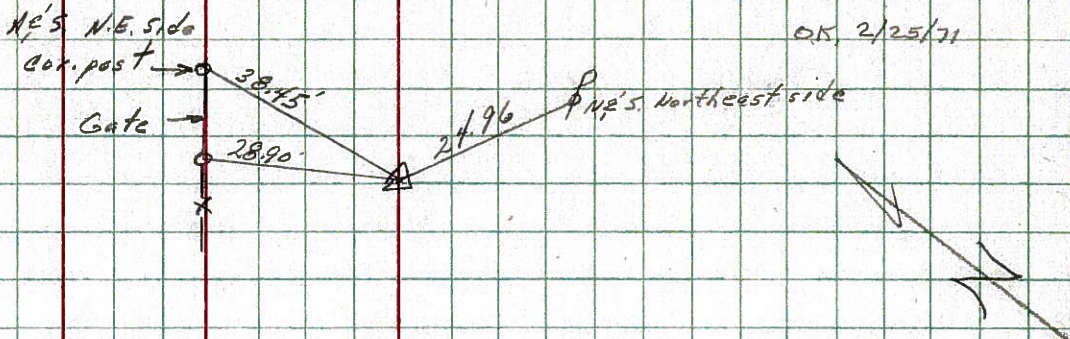
Geyman

DESCRIPTION Ties for Control Points Tiffin Corp to Sand. Co. Line JOB NO.

LEFT CENTER LINE RIGHT

12

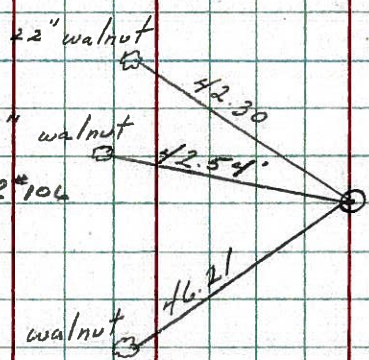
~~P.I.~~  
 $\Delta = 0^\circ - 37' Lt.$   
 P.I.  
 73+11.20  
 Fd. Iron pin  $2\frac{1}{2}$ " below surface 3/10/70



OK 2/25/71

11

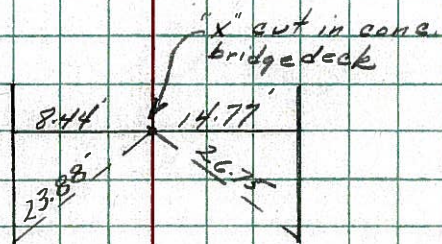
~~P.T.~~  
 67+27.3 / S.R. #101 = 67.2820 S.R. #104  
 R.R. spk with punch hole 2" below surface



OK 2/25/71

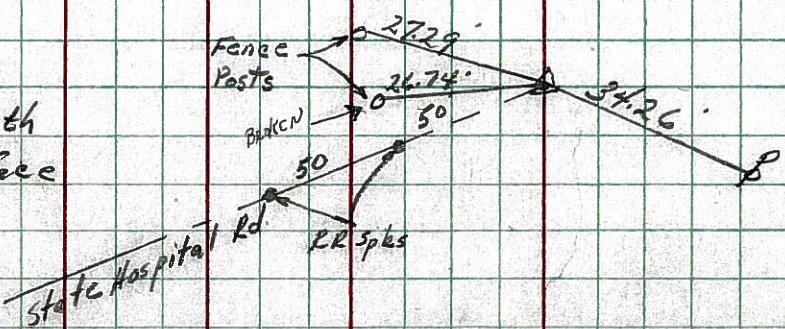
8

~~P.I.~~  
 $\Delta = 2^\circ - 42' Rt.$   
 64+57.40 S.R. #101 =  
 64+59.29 S.R. #106  
 Fd. 3/11/70



OK 2/25/71

~~P.I.~~  
 $\Delta = 0^\circ - 32' Lt.$   
 P.I.  
 46+88.42  
 Fd. Harrow tooth 3" below surface 3/11/70



Note: Distance between Sta 3401.06 to Sta 46+88.42 = 7087.02'

OK 2/25/71

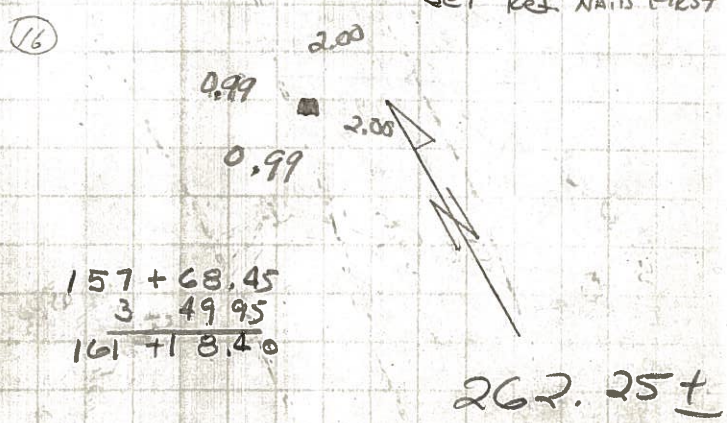
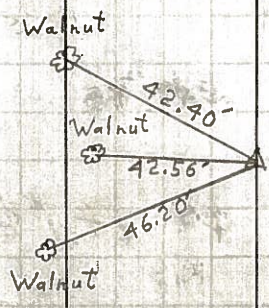


PERSONNEL	TITLE	PERSONNEL	TITLE
Krabill			
Kowalski			
Gayman			

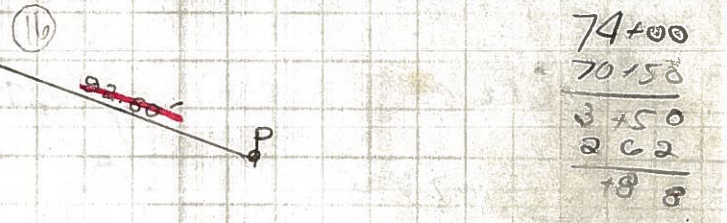
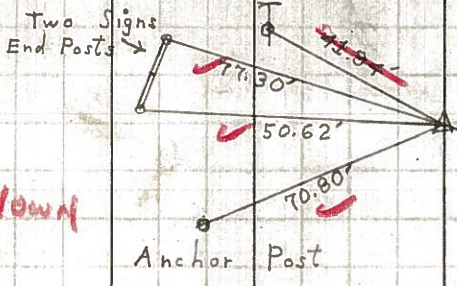
COUNTY Seneca DATE 2-3-64  
 S. R. # 101 WEATHER \_\_\_\_\_  
 SEC. \_\_\_\_\_ TEMP \_\_\_\_\_

DESCRIPTION \_\_\_\_\_ LEFT \_\_\_\_\_ CENTER LINE \_\_\_\_\_ RIGHT \_\_\_\_\_ JOB NO. \_\_\_\_\_

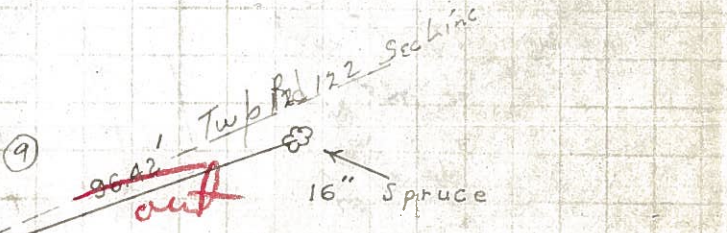
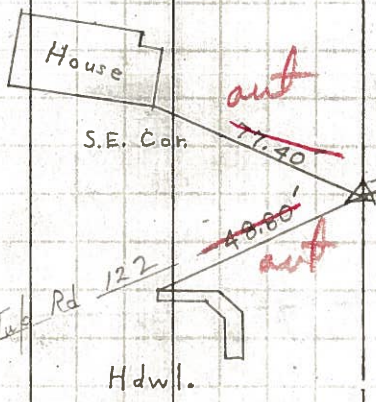
**11**  
 STA. 67+00  
 P. K.  
 # 365



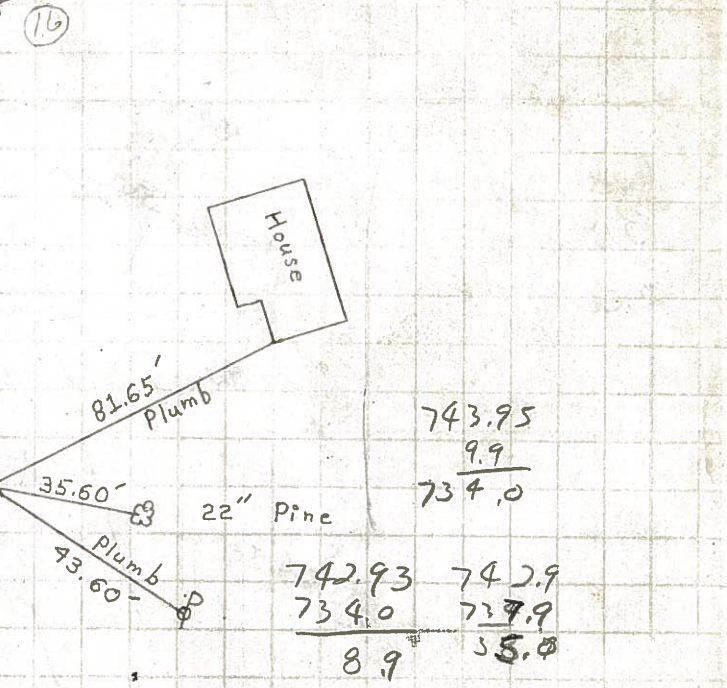
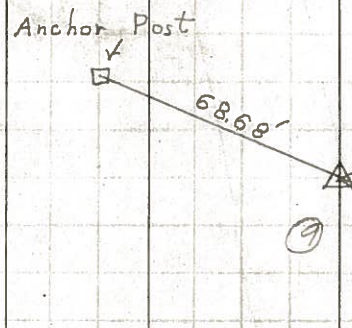
**12**  
 STA. 74+00  
 Iron Pin  
 # 366  
**FD IRON PIN 3' DOWN**



**14**  
 STA. 86+00  
 Iron Pin  
 # 367  
**FD 3/4" IRON PIN 2-28-63**  
**5 1/4" DOWN SW**



**15**  
 STA. 104+00  
 Iron Pin  
 # 368



PERSONNEL TITLE PERSONNEL TITLE

COUNTY Seneca

DATE 2-3-64

Krabill

Kowalski

Gayman

S. R. # 101

WEATHER

SEC.

TEMP.

DESCRIPTION

LEFT

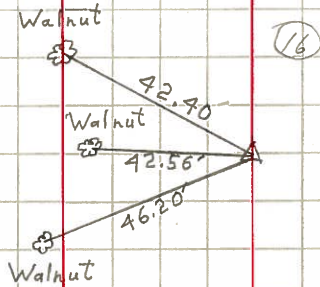
CENTER LINE

RIGHT

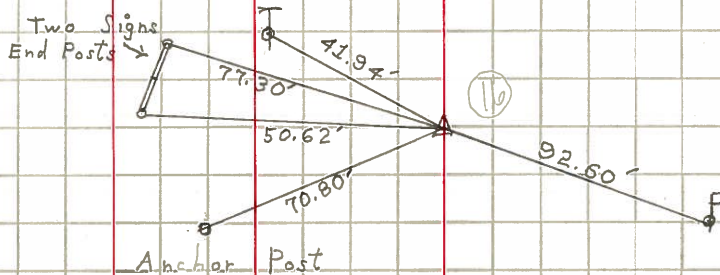
JOB NO.

11

STA. 67+00  
P. K.  
# 365

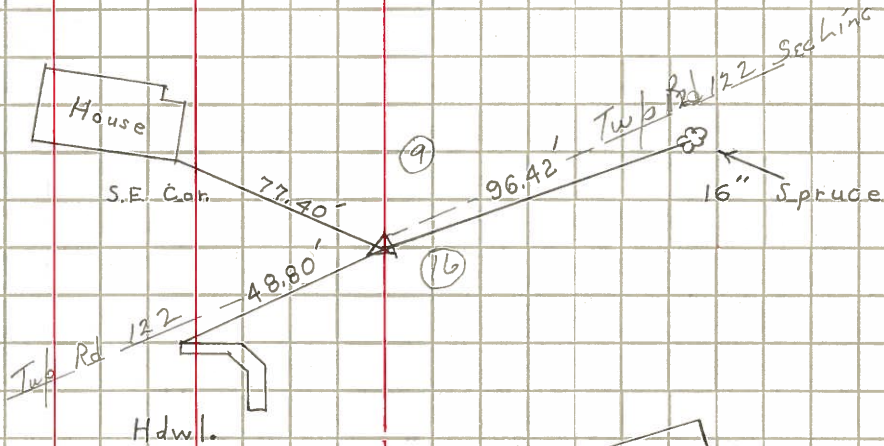


STA. 74+00  
Iron Pin  
# 366



14

STA. 86+00  
Iron Pin  
# 367



15

STA. 104+00  
Iron Pin  
# 368

