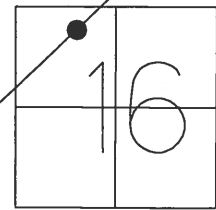


O.D.O.T. DISTRICT 2 SURVEY OFFICE (USE ONLY)

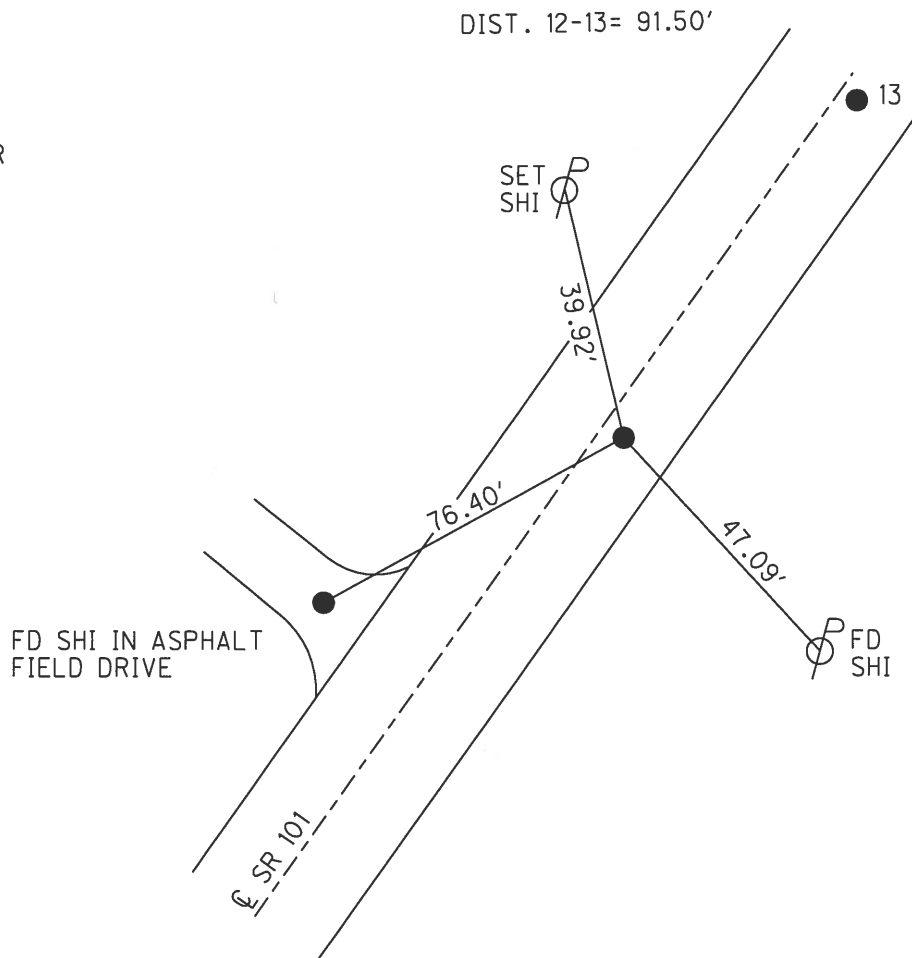
PERSONNEL	REFERENCE NO. <u>12</u>	SHEET <u>13</u> OF <u>27</u>
NOTES SEAMAN	DATE <u>3/22/18</u>	ROUTE <u>SR 101</u>
H.C. <u>O'DONNELL</u>	WEATHER <u>SUNNY</u>	COUNTY <u>SENECA</u>
R.C. <u>SEAMAN</u>	TEMP. <u>35°</u>	TOWNSHIP <u>CLINTON</u>
		SECTION <u>16</u>
DWG BY <u>MILLER</u>	PID <u>102817</u>	T <u>2</u> N R <u>15</u> E

TYPE MONUMENT MAG/WASHER
 ON SURFACE - ~~BELOW~~ ON
 OFFSET Q PAVEMENT 2' ~~RT~~ : RT
7.9' TO RT EDGE PAVEMENT
 STATION: 158+74.84



HORZ. DATUM: NAD83 2011 GEOID: 2012A NAVD88
 GRID: NORTHING: 536119.023 EASTING: 1792140.317

RECORD: P.I.
 STA. 73+11.20
 FD IPIN
 2" BELOW
 $\Delta = 0^\circ 37' \text{ LT}$
 3-11-70
 SET P.K./WASHER
 9-30-92
 SET MAG/WASHER
 6-24-08, DCH
 FD MAG/WASHER
 REF12
 10-11-16, JFO
 SET MAG/WASHER
 10-10-18, JFO

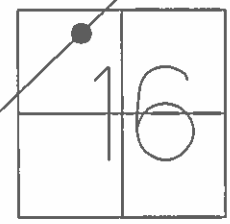


O.D.O.T. DISTRICT 2 SURVEY OFFICE (USE ONLY)

PERSONNEL _____ REFERENCE NO. 12 SHEET 13 OF 27

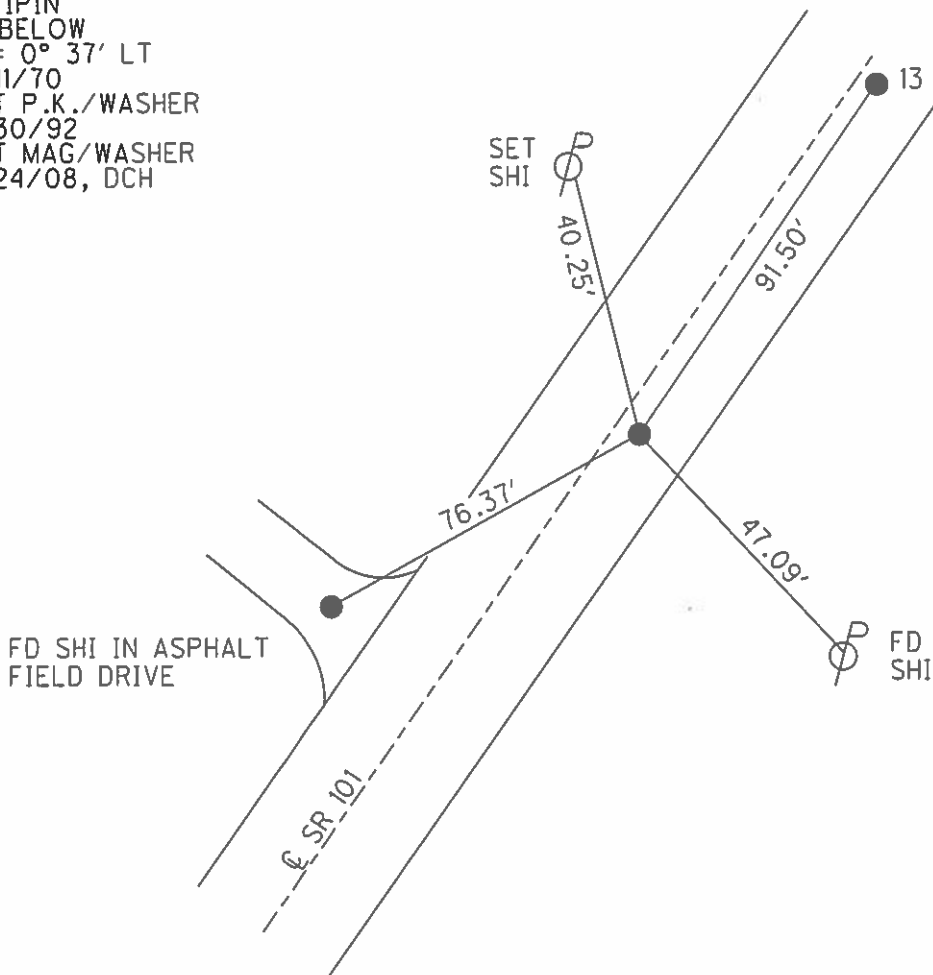
NOTES HOMAN DATE 6-24-08 ROUTE SR 101
 H.C. ROUSOS WEATHER SUNNY COUNTY SENECA
 R.C. HOMAN TEMP. 75° TOWNSHIP CLINTON
 _____ SECTION 16
 _____ T 2 N R 15 E

TYPE MONUMENT P.K./WASHER
 ON SURFACE - ~~BELOW~~ ON _____
~~LEFT~~ - CL PAV'T - RIGHT 1'
7.9' TO RT EDGE PAVEMENT
 S.L.M. 158+75



GRID: NORTHING: 536119.083 EASTING: 1792140.295

RECORD: P.I.
 STA. 73+11.20
 FD IPIN
 2" BELOW
 $\Delta = 0^\circ 37' \text{ LT}$
 3/11/70
 SET P.K./WASHER
 9/30/92
 SET MAG/WASHER
 6/24/08, DCH



O.D.O.T. DISTRICT 2 SURVEY OFFICE

PERSONNEL

REFERENCE NO. 12

SHEET 13 OF 27

NOTES CHENEY

DATE 7/20/92

ROUTE SR 101

H.C. RIPPLE

WEATHER SUNNY

COUNTY SENECA

R.C. BARBOUR

TEMP. 60°

TOWNSHIP CLINTON

GEYMAN

SECTION 16

T 2 N R 15 E

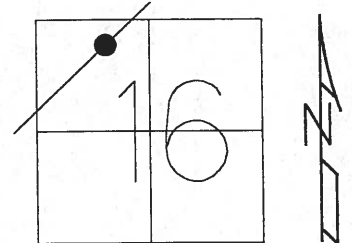
TYPE MONUMENT P.K./WASHER

ON SURFACE - ~~BELOW~~ ON

~~LEFT~~ - Q PAV'T - RIGHT 2'

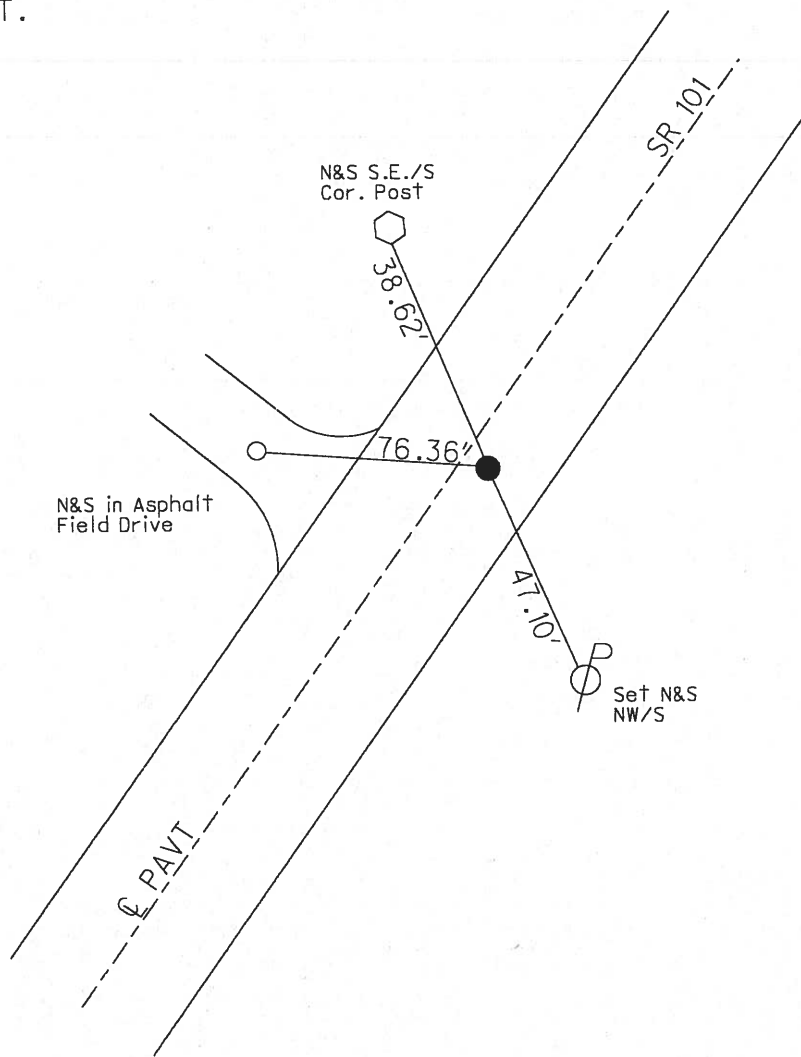
7.9' TO RT EDGE PAVEMENT

S.L.M. 158+75



Record: 3-11-70
 P.I. STA. 73+11.20 Fd. Iron
 Pin 2 1/2" below surface
 Delta = 0°- 37' LT.

SET P.K./WASHER
 9/30/92



O.D.O.T. DISTRICT 2 SURVEY OFFICE

PERSONNEL

REFERENCE NO. 12

SHEET 12 OF 26

NOTES Cheney

H.C. RIPPLE

R.C. BARBOUR

GEYMAN

DATE 7-20-92

WEATHER SUNNY

TEMP. 60°

ROUTE SR.#101

COUNTY SENECA

TOWNSHIP CLINTON

SECTION 16

T2 N R 15 E

TYPE MONUMENT P.K./WASHER

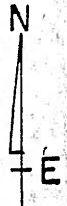
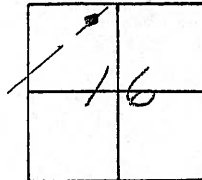
Set P.K. Washer
9-30-92

ON SURFACE - BELOW yes

LEFT- & PAV'T. - RIGHT 2'

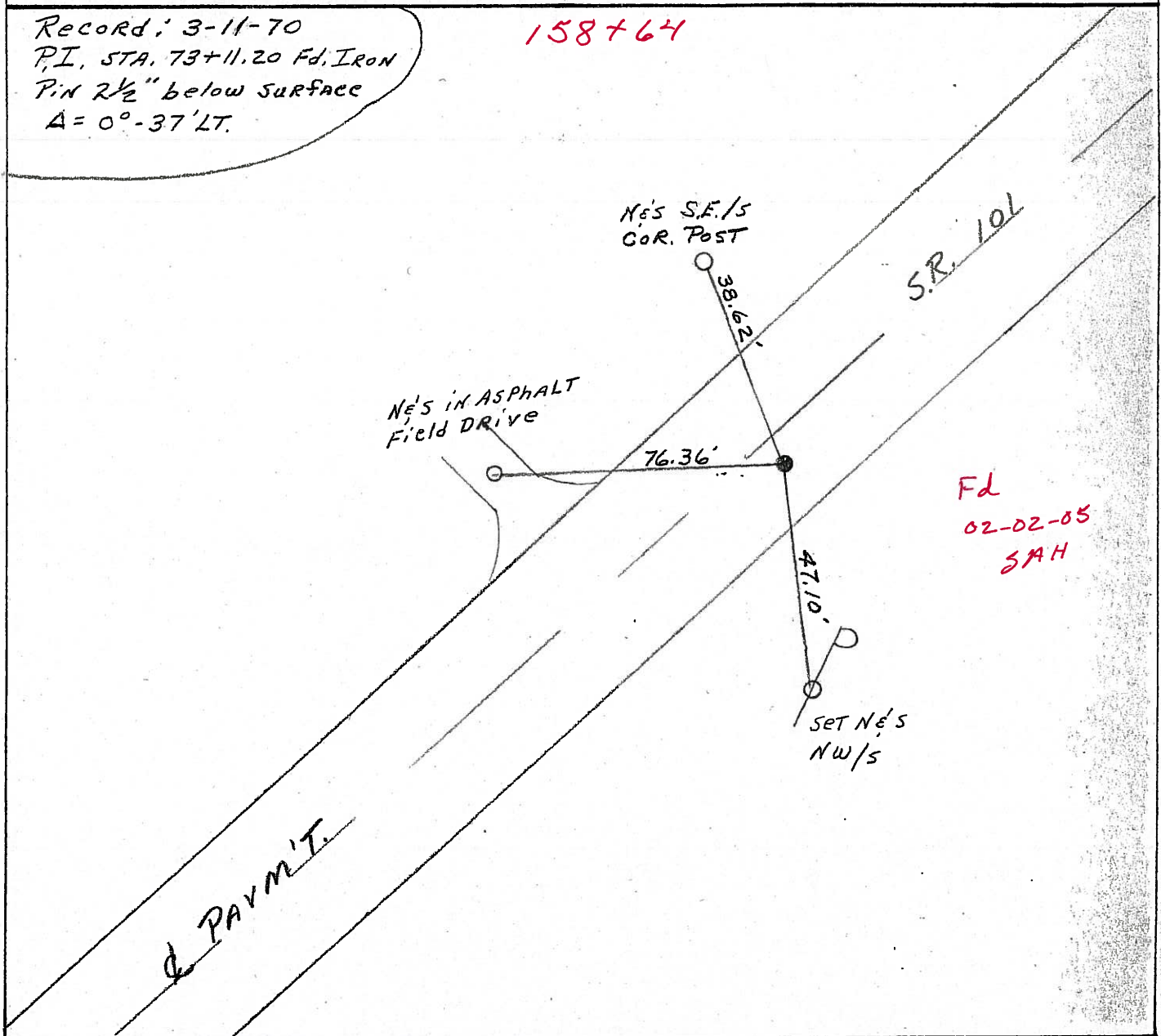
7.9' TO RT. EDGE PAVEMENT

S.L.M. 158+75



Record: 3-11-70
P.I. STA. 73+11.20 Fd. Iron
Pin 2 1/2" below surface
A = 0°-37' LT.

158+64



O.D.O.T. DISTRICT 2 SURVEY OFFICE

PERSONNEL

REFERENCE NO. 12

SHEET 13 OF 20

NOTES Cheney

H.C. RIPPLE

R.C. BARBOUR

Geyman

DATE 7-20-92

WEATHER SUNNY

TEMP. 60°

ROUTE SR.# 101

COUNTY SENECA

TOWNSHIP CLINTON

SECTION 16

T 2 N R 15 E

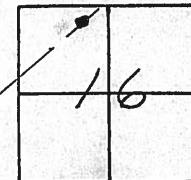
TYPE MONUMENT P.K./WASHER Set P.K. washer 9-30-92

ON SURFACE - BELOW yes

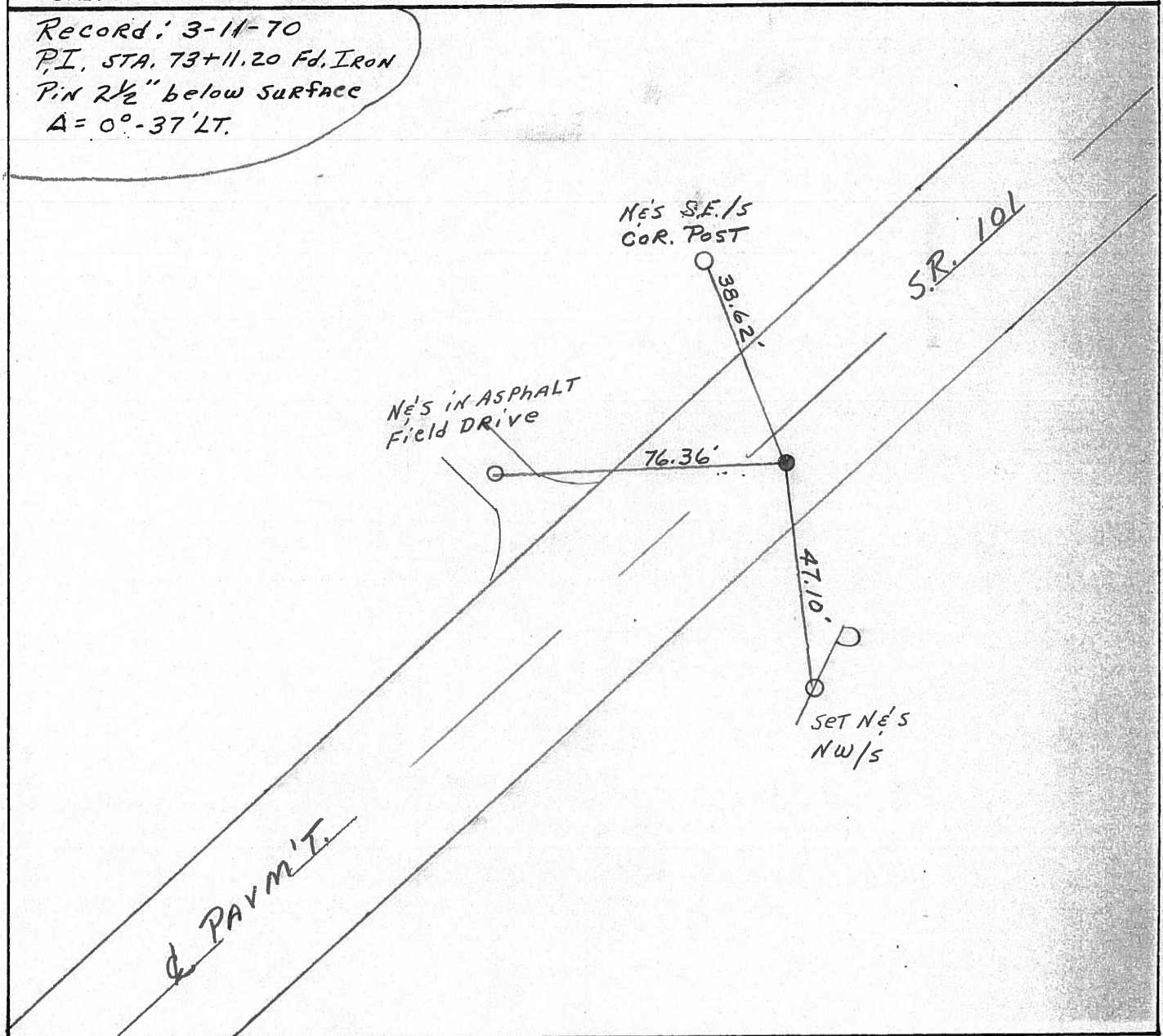
~~LEFT~~ & PAV'T. - RIGHT 2'

7.9' TO RT. EDGE PAVEMENT

S.L.M. 158+75



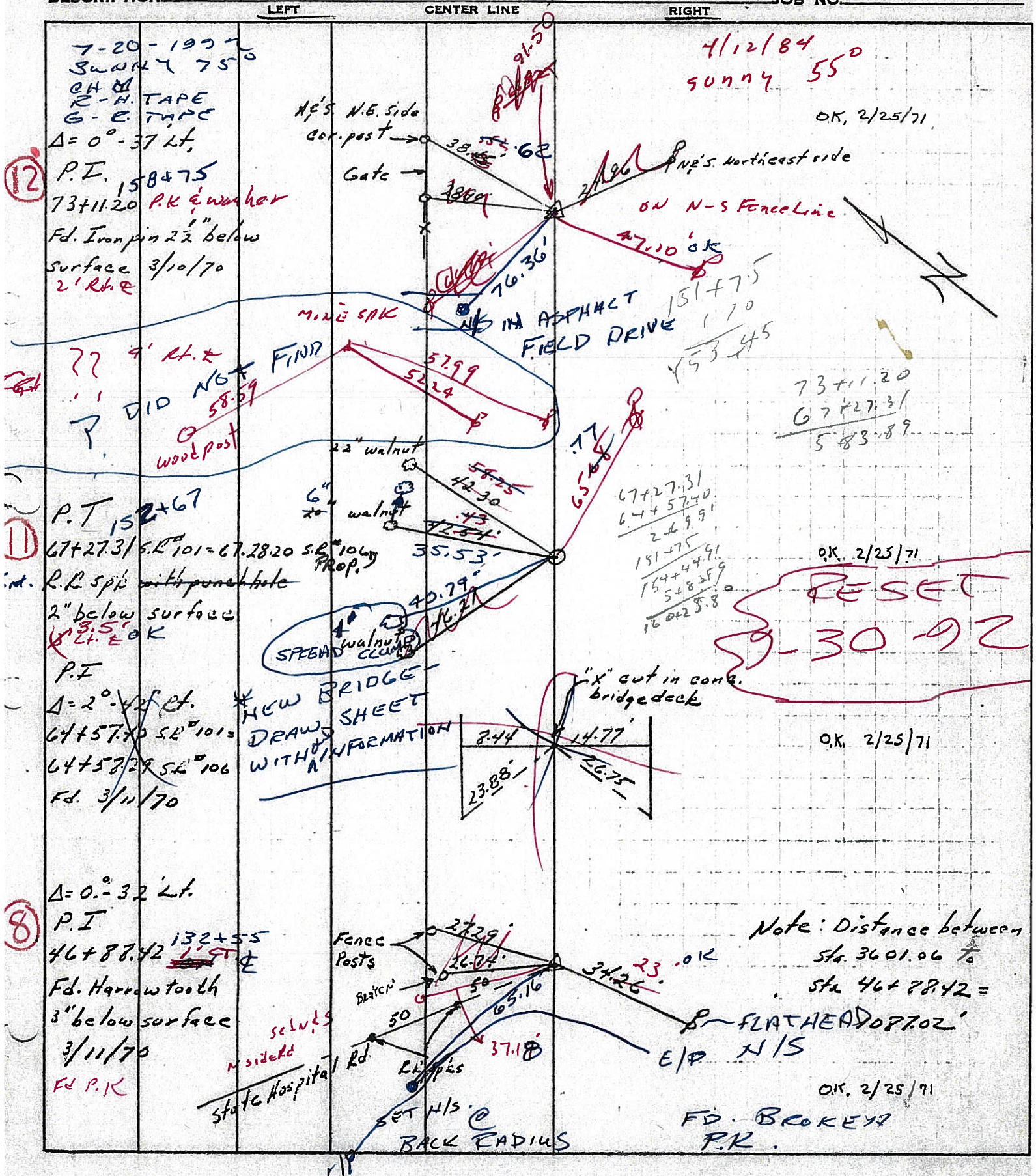
Record: 3-11-70
 P.I. STA. 73+11.20 Fd. Iron
 Pin 2 1/2" below surface
 A = 0°-37'LT.



PERSONNEL TITLE PERSONNEL TITLE
 Ash _____
 Cronin _____
 Ripple _____
 Seyman _____

COUNTY Seneca DATE 3/11/70
 S. R. 101 (T.C.H. #271) WEATHER sunny
 SEC. I-K-O-J TEMP. 30°

DESCRIPTION Ties for Control Points - Tiffin Corp to Sand. Co. Line JOB NO. _____



12

11

8

4/12/84
sunny 55°

OK, 2/25/71

73+11.20
 67+27.31
 583.89

OK, 2/25/71

RESET
 30.92

OK, 2/25/71

OK, 2/25/71

Note: Distance between
 Sta. 3601.06 to
 Sta 46+8842 =

FD. BROKEY
 P.R.

OD.O.T. DISTRICT 2 SURVEY OFFICE

SHEET 3 OF

County SENECA S.R. 101

Date MARCH 1, 83

Township CLINTON

Weather CLEAR

Section 16

Temp. +45°

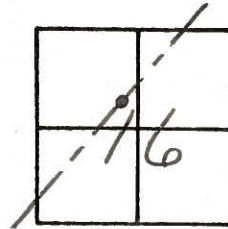
T N, R E

Personnel HOFFMAN

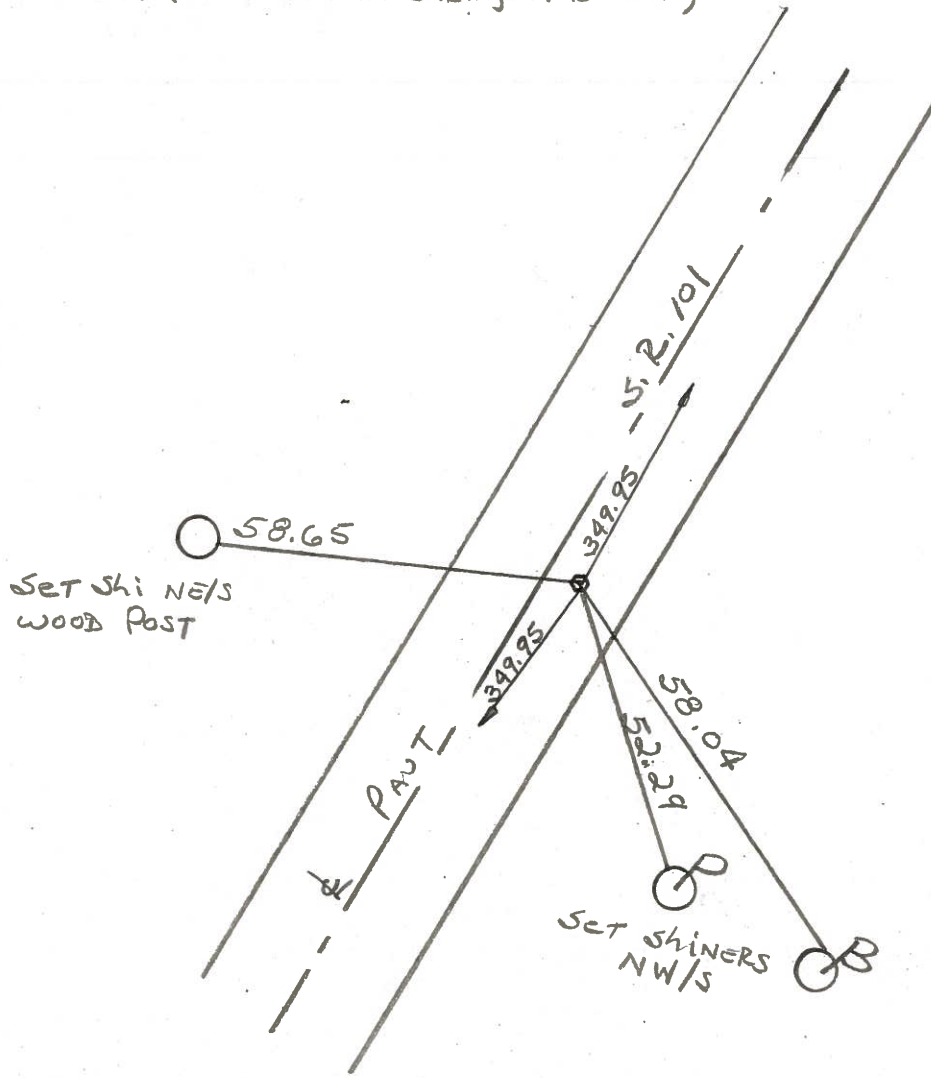
LOEHLKE

HOUSEHOLDER

~~19~~ (12)



Set small R.R. spike on surface (1925 P.I. STA 70+50) SLM STA. 157+68.4'
 EQUAL DISTANCE FROM P.I. SOUTH (1925 STA 67+00) &
 P.I. NORTH (1925 STA 74+00) & ON TANGENT
 LINE NORTH (1925 PLAN BEARING N43°-12'E)



PERSONNEL TITLE PERSONNEL TITLE

COUNTY Seneca DATE 3/11/70

Ash
Cronin
Ripple
Geyman

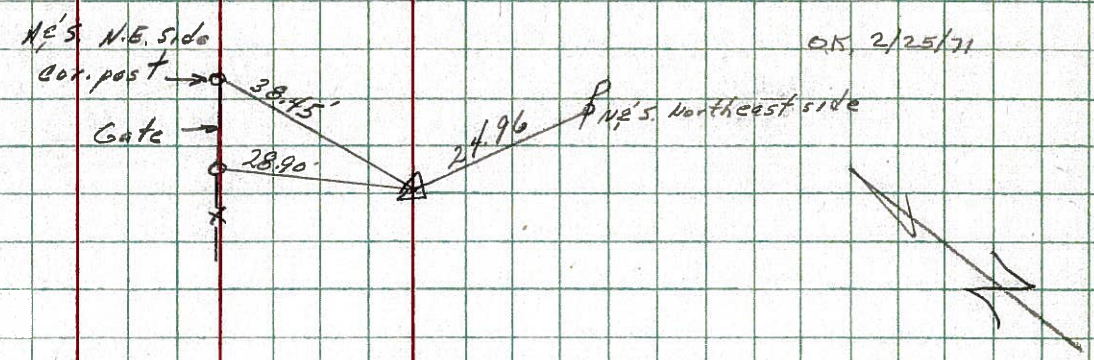
S. R. #101 (I.C.H #271) WEATHER sunny
SEC. I-K-O-J TEMP. 30°

DESCRIPTION Ties for Control Points - Tiffin Corp to Sand. Co. Line JOB NO.

LEFT CENTER LINE RIGHT

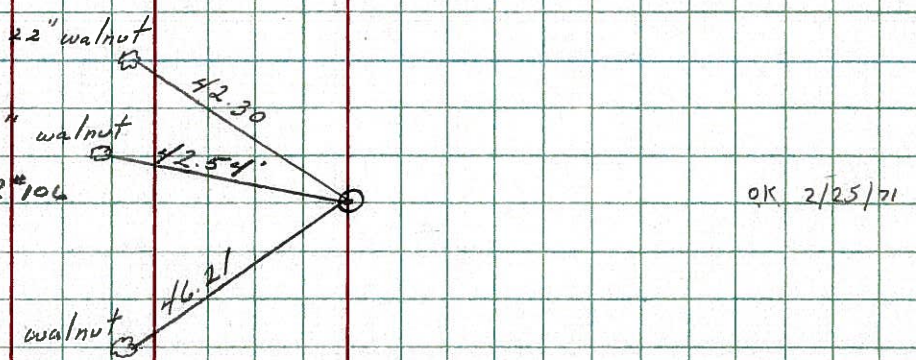
12

~~P.I.~~
 $\Delta = 0^\circ - 37' Lt.$
P.I.
73+11.20
Fd. Iron pin 2 1/2" below surface 3/10/70



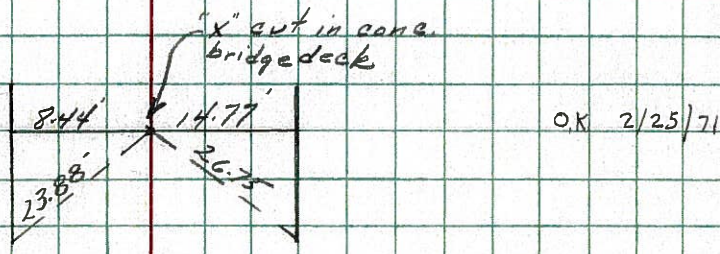
11

~~P.T~~
67+27.31 S.R #101 = 67.2820 S.R #106
R.R spike with punch hole 2" below surface

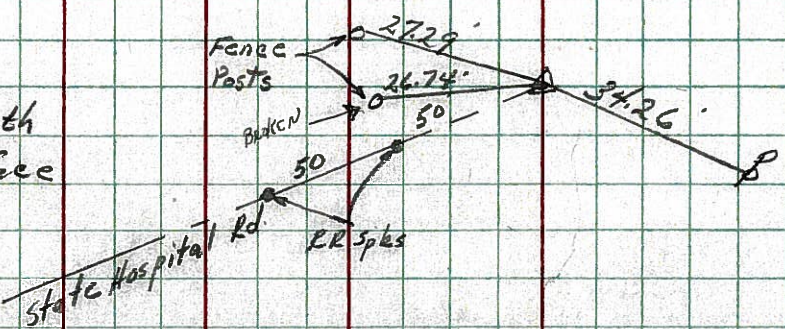


8

~~P.F~~
 $\Delta = 2^\circ - 42' Rt.$
64+57.40 S.R #101 =
64+58.29 S.R #106
Fd. 3/10/70



~~P.I~~
 $\Delta = 0^\circ - 32' Lt.$
P.I.
46+88.42
Fd. Harrow tooth 3" below surface 3/11/70



Note: Distance between Sta. 3601.06 to Sta. 46+88.42 = 1087.02'

OK 2/25/71