

O.D.O.T. DISTRICT 2 SURVEY OFFICE (USE ONLY)

PERSONNEL \_\_\_\_\_ REFERENCE NO. 13 SHEET 14 OF 27  
 NOTES SEAMAN \_\_\_\_\_ DATE 3/22/18 ROUTE SR 101  
 H.C. O'DONNELL \_\_\_\_\_ WEATHER SUNNY COUNTY SENECA  
 R.C. SEAMAN \_\_\_\_\_ TEMP. 35° TOWNSHIP CLINTON  
 DWG BY MILLER \_\_\_\_\_ PID 102817 SECTION 16  
 T 2 N R 15 E

TYPE MONUMENT \_\_\_\_\_ MAG/WASHER \_\_\_\_\_

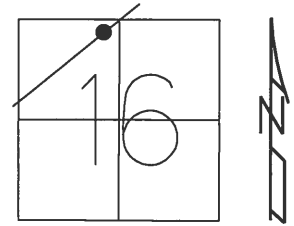
ON SURFACE - ~~BELOW~~ \_\_\_\_\_ ON \_\_\_\_\_

OFFSET  $\text{C}$  PAVEMENT 2' ~~LT~~ : RT  
9.2' TO RT EDGE PAVEMENT

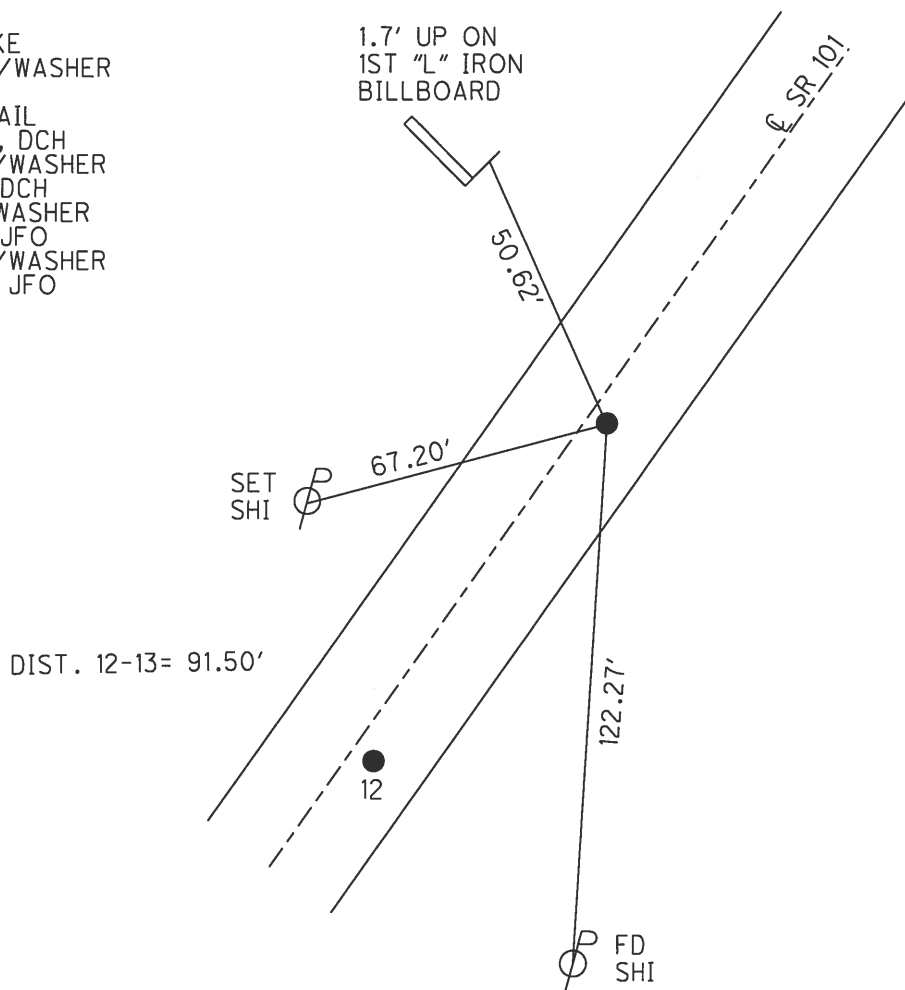
STATION: 159+66.3

HORZ. DATUM: NAD83 2011 GEOID: 2012A NAVD88

GRID: NORTHING: 536179.347 EASTING: 1792209.059



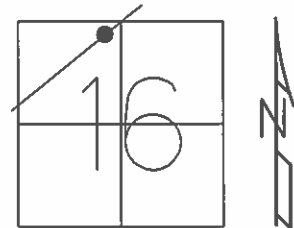
RECORD:  
 R.R. SPIKE  
 SET P.K./WASHER  
 9-30-92  
 FD P.K.NAIL  
 6/24/08, DCH  
 SET MAG/WASHER  
 10-1-08, DCH  
 FD MAG/WASHER  
 10-11-16, JFO  
 SET MAG/WASHER  
 10-10-18, JFO



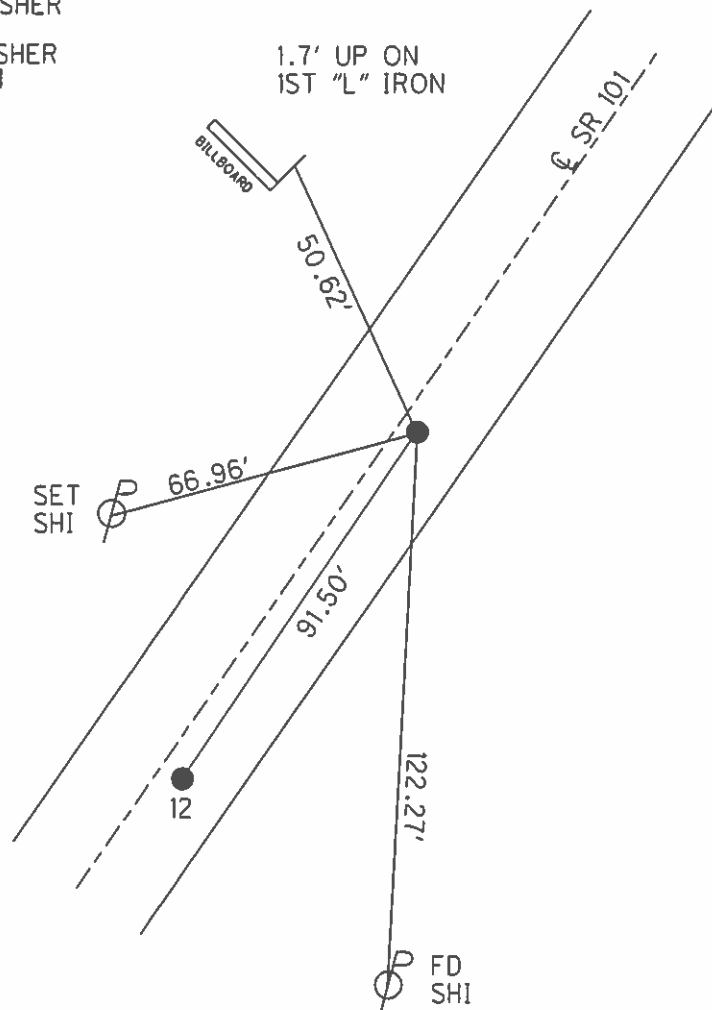
O.D.O.T. DISTRICT 2 SURVEY OFFICE (USE ONLY)

PERSONNEL \_\_\_\_\_ REFERENCE NO. 13 SHEET 14 OF 27  
 NOTES HOMAN DATE 6-24-08 ROUTE SR 101  
 H.C. ROUSOS WEATHER SUNNY COUNTY SENECA  
 R.C. HOMAN TEMP. 75° TOWNSHIP CLINTON  
 SECTION 16  
 T 2 N R 15 E

TYPE MONUMENT P.K.NAIL  
 ON SURFACE - ~~BELOW~~ ON \_\_\_\_\_  
~~LEFT~~ - CL PAV'T - RIGHT 1'  
9.2' TO RT EDGE PAVEMENT  
 S.L.M. 159+67  
 GRID: NORTHING: 536179.480 EASTING: 1792208.992



RECORD:  
 R.R. SPIKE  
 SET P.K./WASHER  
 9/30/92  
 SET MAG/WASHER  
 10/1/08, DCH



O.D.O.T. DISTRICT 2 SURVEY OFFICE

PERSONNEL

REFERENCE NO. 13

SHEET 14 OF 27

NOTES CHENEY

DATE 7/20/92

ROUTE SR 101

H.C. RIPPLE

WEATHER SUNNY

COUNTY SENECA

R.C. BARBOUR

TEMP. 60°

TOWNSHIP CLINTON

GEYMAN

SECTION 16

T 2 N R 15 E

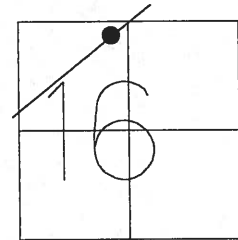
TYPE MONUMENT SM.R.R.SPIKE

ON SURFACE - ~~BELOW~~ ON

~~LEFT~~ - C PAV'T - RIGHT 1'

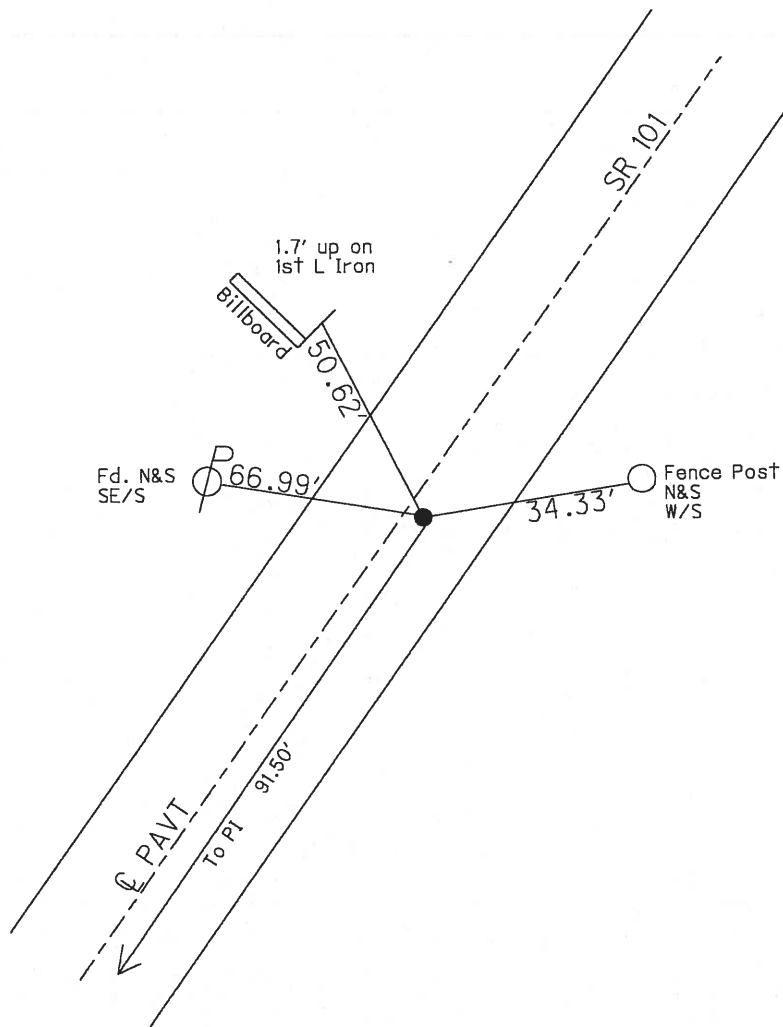
9.2' TO RT EDGE PAVEMENT

S.L.M. 159+67



Record: R.R. spk. on Top  
Inters SR# 101 & Proposed  
SR# 106 Bypass

SET P.K./WASHER  
9/30/92



O.D.O.T. DISTRICT 2 SURVEY OFFICE

PERSONNEL

REFERENCE NO. 13

SHEET 13 OF 26

NOTES Cheney

H.C. RIPPLE

DATE 7-20-92

ROUTE SR#101

R.C. BARBOUR

WEATHER SUNNY

COUNTY SENECA

GEYMAN

TEMP. 60°

TOWNSHIP CLINTON

SECTION 16

T 2 N R 15 E

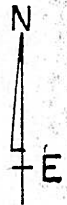
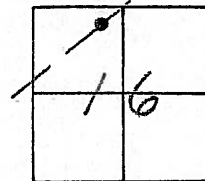
TYPE MONUMENT Small RR SPK set PK. & washer 9-30-92

ON SURFACE - ~~BELOW~~ yes

LEFT - ~~0~~ PAV'T. - RIGHT 1'

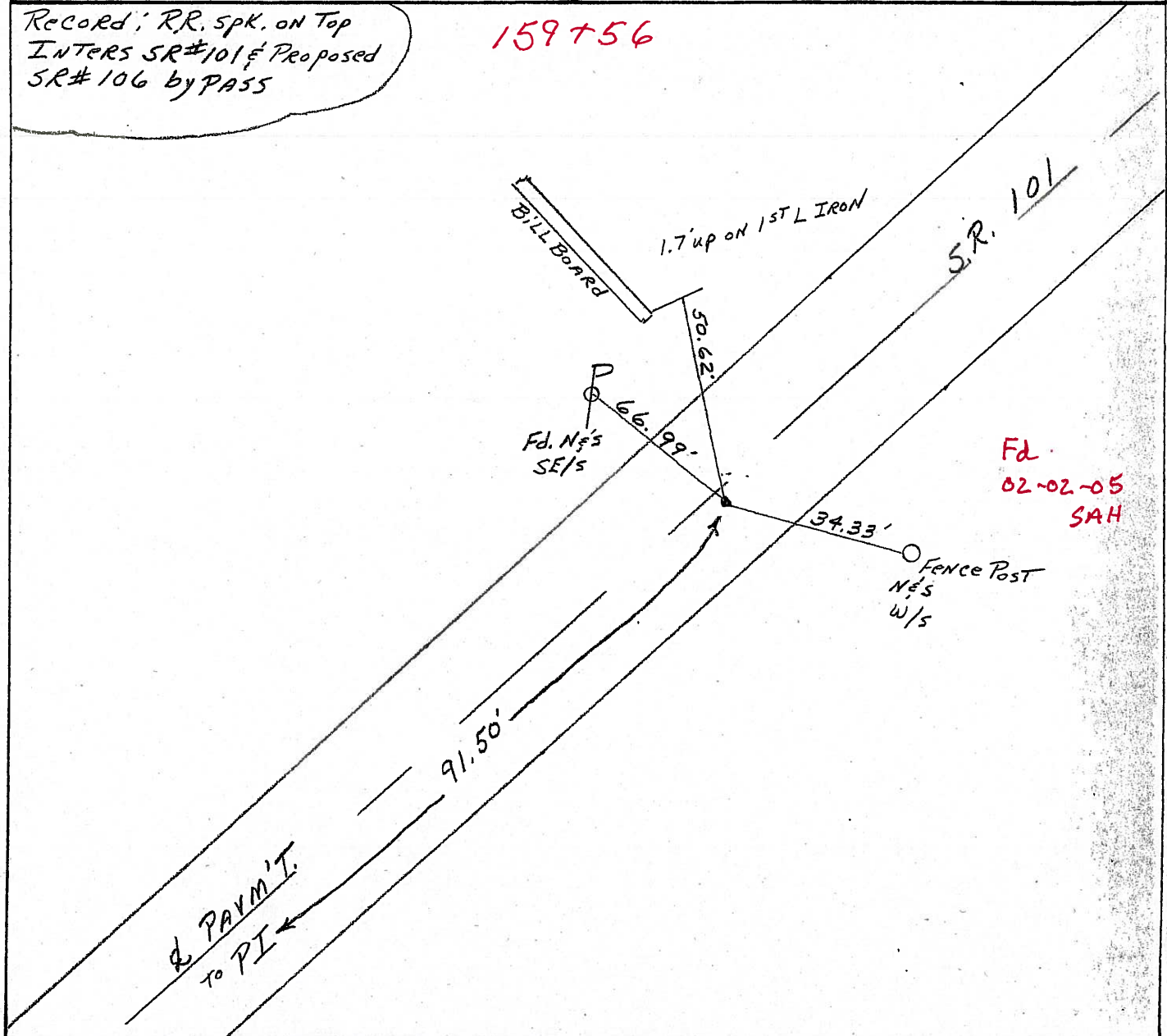
9.2 TO RT. EDGE PAVEMENT

S.L.M. 159+67



Record: RR. spk. on Top  
INTERS SR#101 & Proposed  
SR#106 byPASS

**159+56**



# O.D.O.T. DISTRICT 2 SURVEY OFFICE

PERSONNEL

REFERENCE NO. 13

SHEET 15 OF 26

NOTES Cheney

H.C. RIPPLE

R.C. BARBOUR

GEYMAN

DATE 7-20-92

WEATHER SUNNY

TEMP. 60°

ROUTE SR#101

COUNTY SENECA

TOWNSHIP CLINTON

SECTION 16

T2 N R 15 E

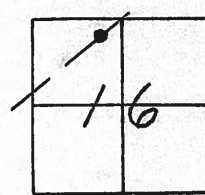
TYPE MONUMENT Small RR SPK *set P.K. & washer*  
*9-30-92*

ON SURFACE - BELOW yes

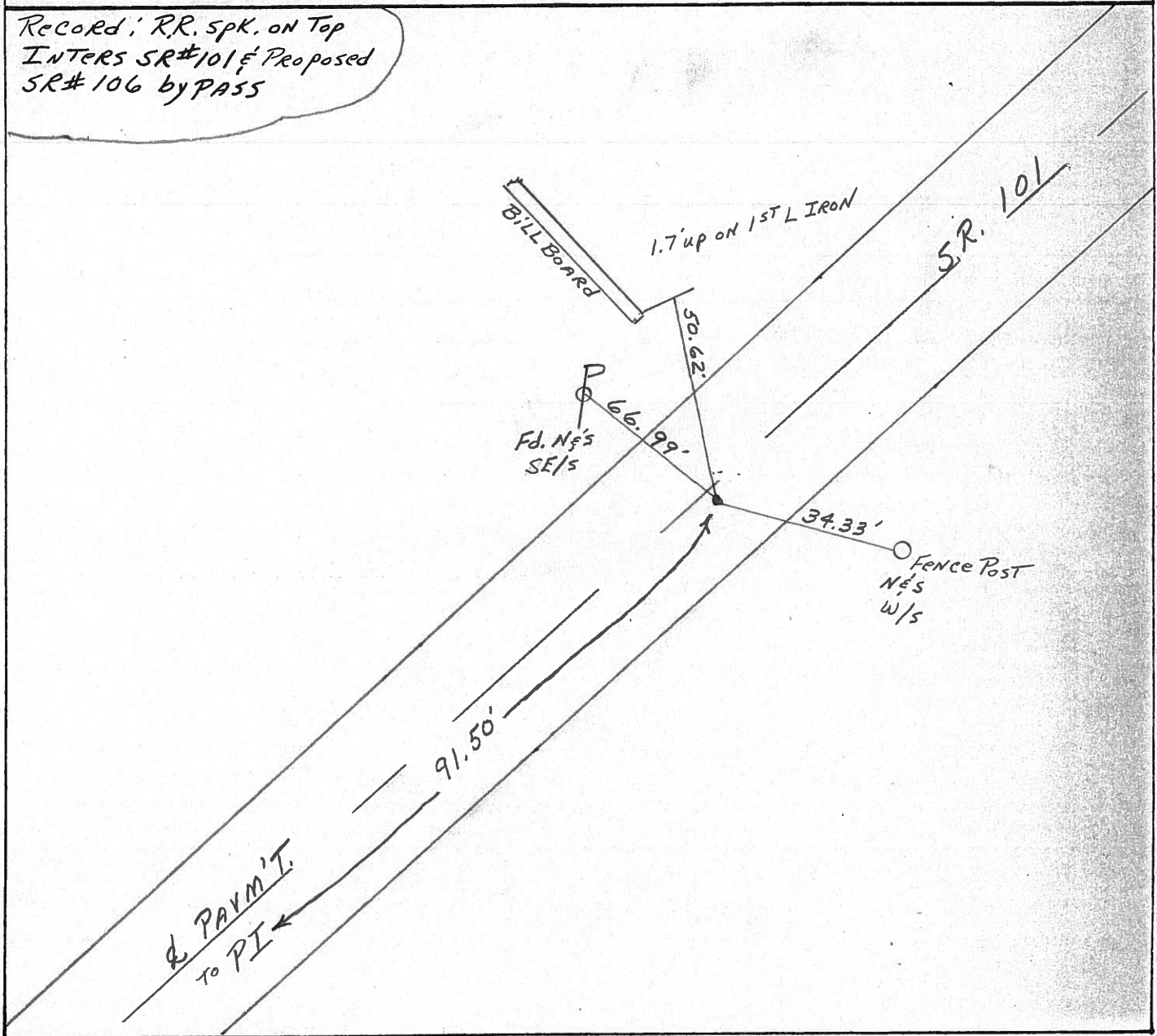
LEFT- & PAV'T. - RIGHT 1'

9.2 TO RT. EDGE PAVEMENT

S.L.M. 159+67



*Record: RR. spk. on Top  
 INTERS SR#101 & Proposed  
 SR#106 BYPASS*



PERSONNEL TITLE PERSONNEL TITLE COUNTY Seneca DATE 3/11/70  
 Ash \_\_\_\_\_  
 Cronin \_\_\_\_\_ S. R. #101 (ICH #271) WEATHER sunny  
 Ripple \_\_\_\_\_ SEC. I-K-O-I TEMP. 30°  
 Geyman \_\_\_\_\_  
 DESCRIPTION Ties for Control Points - Tiffin Corp to Sandusky Co. Line JOB NO. \_\_\_\_\_  
 LEFT CENTER LINE RIGHT

9  
 282  
 928  
 946  
 966  
 986

15

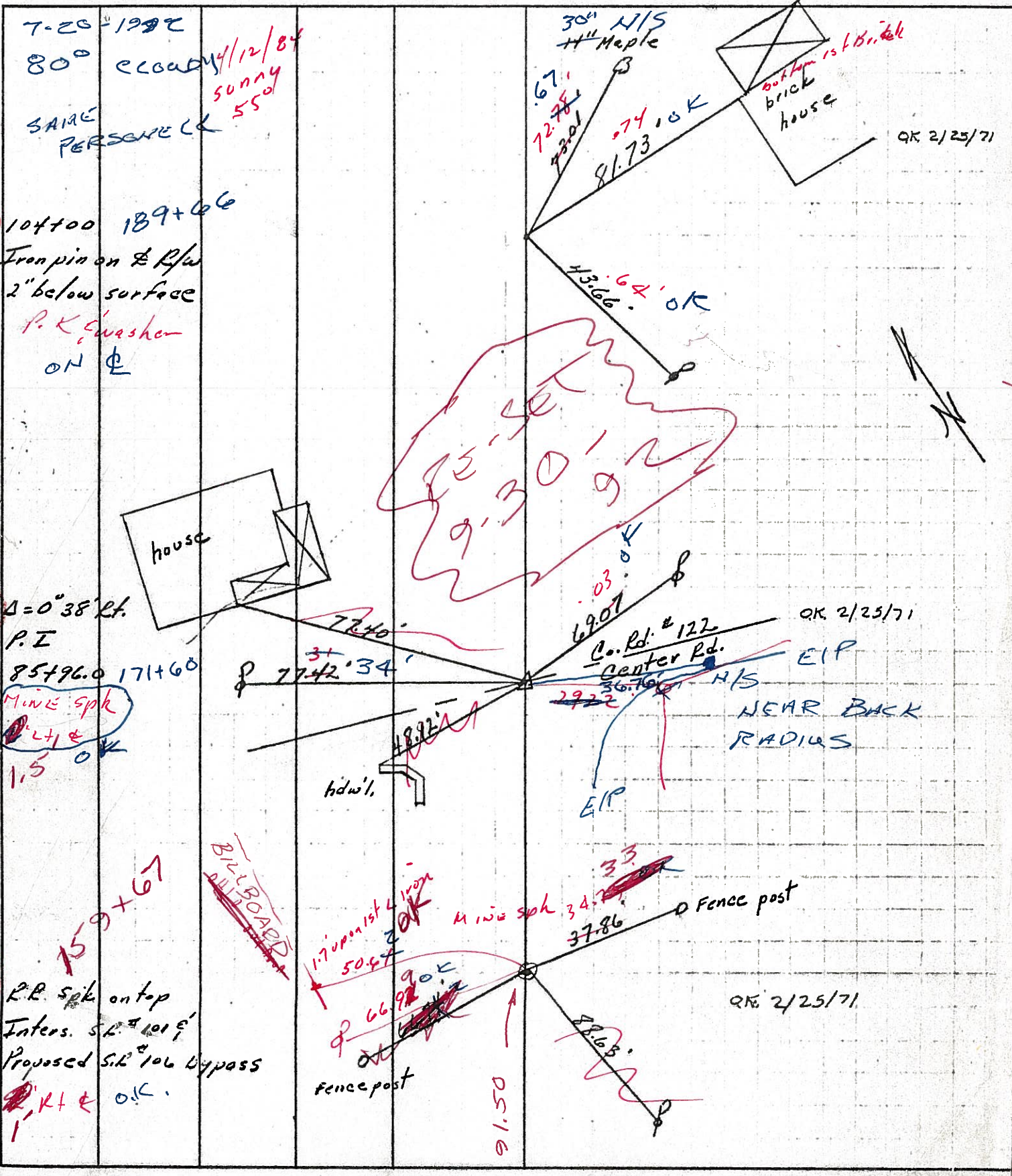
7-20-1992  
 80° cloudy 4/12/84 sunny 55°  
 SAME PERSONNEL  
 104+00 189+66  
 Iron pin on E R/w  
 2" below surface  
 P. K. Washer on E

14

Δ = 0° 38' Lt.  
 P. I  
 85+96.0 171+60  
 Mine spk  
 1.41 E  
 1.5 OK  
 house  
 hdw'l.  
 77.40  
 77.42  
 31  
 77.42  
 34  
 69.01  
 .03  
 Co. Rd. #122  
 Center Rd.  
 36.76  
 29.22  
 EIP  
 NEAR BACK RADIUS  
 OK 2/25/71

13

RR spk on top  
 Inters. S.R. #101  
 Proposed S.R. #106 Bypass  
 1' K+ E OK  
 159+67  
 BILLBOARD  
 1.7' monument 2 iron  
 50.47  
 66.92  
 90°  
 fence post  
 05.16  
 34.7  
 37.86  
 Fence post  
 78.63  
 33  
 OK 2/25/71



County SENECA S.R. 101

Date MARCH 1, 83

Township CLINTON

Weather CLEAR

Section 16

Temp. +45°

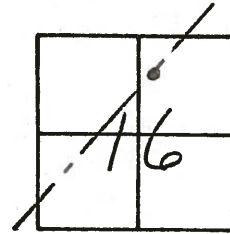
T N, R E

Personnel HOFFMAN

LOEHRKE

HOUSEHOLDER

# ~~20~~ (13)

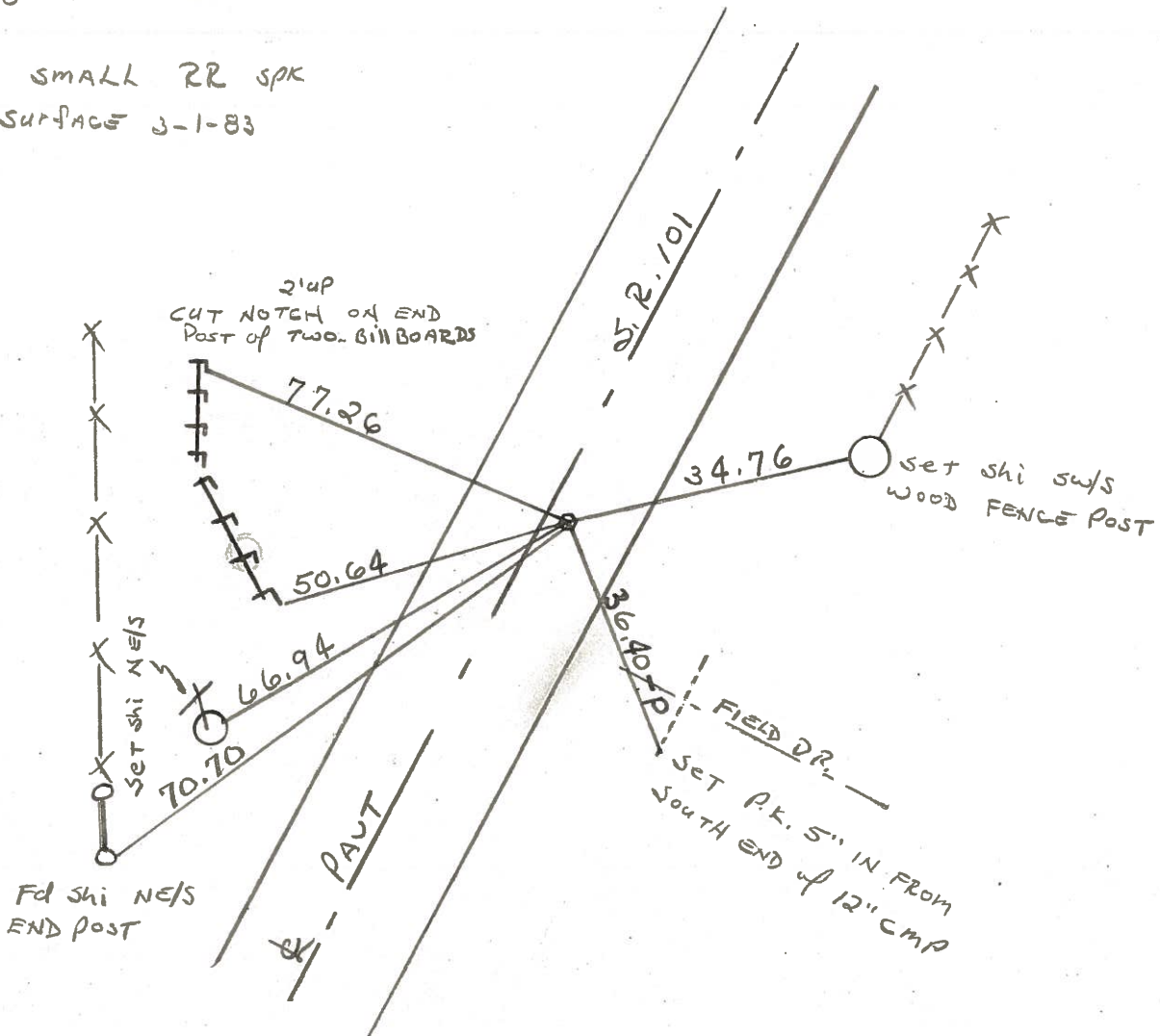


Fd 1" IRON ROD 3" BELOW SURFACE  
FROM 1964 REF. TIES

1925 PLAN STA 74+00  
S.L.M. STA. 161+18.40

1.1' RT. of R PAUT  
8.5' TO E.E.P.  
10.8' TO W.E.P.

SET SMALL RR SPK  
ON SURFACE 3-1-83



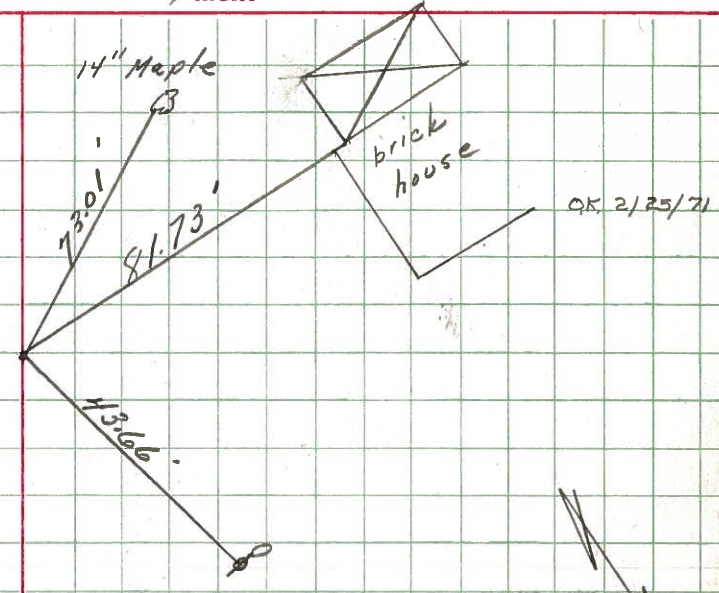
PERSONNEL TITLE PERSONNEL TITLE  
 Ash \_\_\_\_\_  
 Cronin \_\_\_\_\_  
 Ripple \_\_\_\_\_  
 Geyman \_\_\_\_\_

COUNTY Seneca DATE 3/11/70  
 S. R. #101 (I.C.H. #271) WEATHER sunny  
 SEC. I-K-O-I TEMP. 30°

DESCRIPTION Ties for Control Points - Tiffin Corp. to Sandusky Co. Line JOB NO. \_\_\_\_\_  
 LEFT CENTER LINE RIGHT

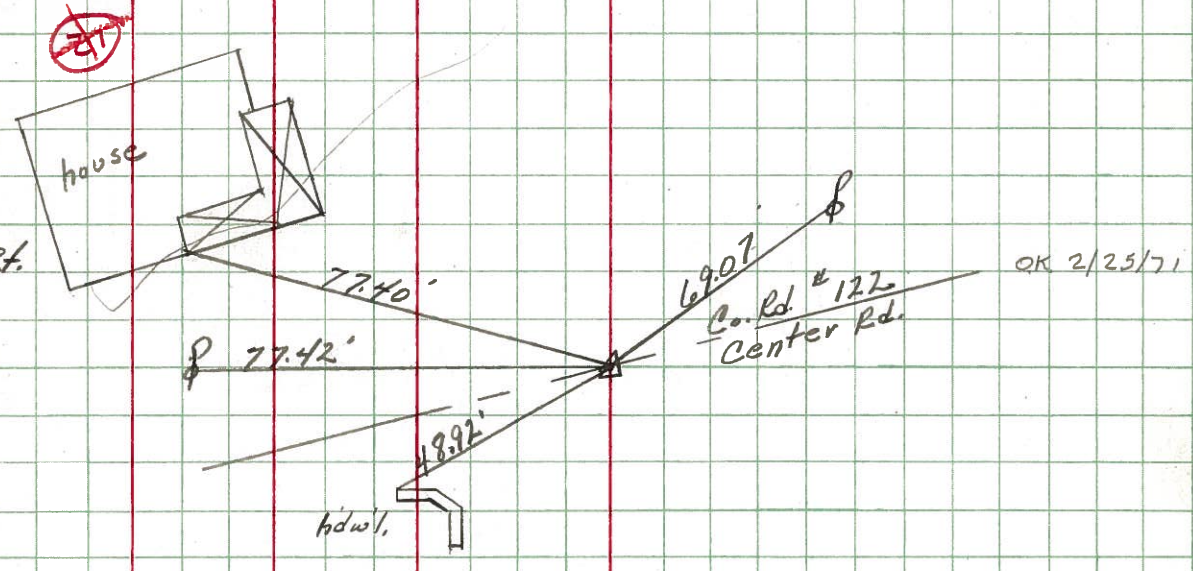
15

104+00  
 Iron pin on E. R/W  
 2" below surface



14

$\Delta = 0^\circ 38' \text{ Rt.}$   
 P.I.  
 85+96.0



13

R.R. spk on top  
 Intersects S.R. #101  
 Proposed S.R. #106 Bypass

