

O.D.O.T. DISTRICT 2 SURVEY OFFICE (USE ONLY)

PERSONNEL

REFERENCE NO. 14

SHEET 15 OF 27

NOTES SEAMAN

DATE 3/22/18

ROUTE SR 101

H.C. O'DONNELL

WEATHER SUNNY

COUNTY SENECA

R.C. SEAMAN

TEMP. 40°

TOWNSHIP CLINTON

SECTION 16

DWG BY MILLER

PID 102817

T 2 N R 15 E

TYPE MONUMENT MAG/WASHER

ON SURFACE - ~~BELOW~~ ON

OFFSET 0 PAVEMENT 1.5' LT : ~~RT~~

8.6' TO LT EDGE PAVEMENT

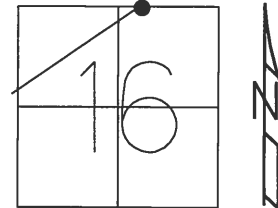
STATION: 171+58.75

HORIZ. DATUM: NAD83 2011

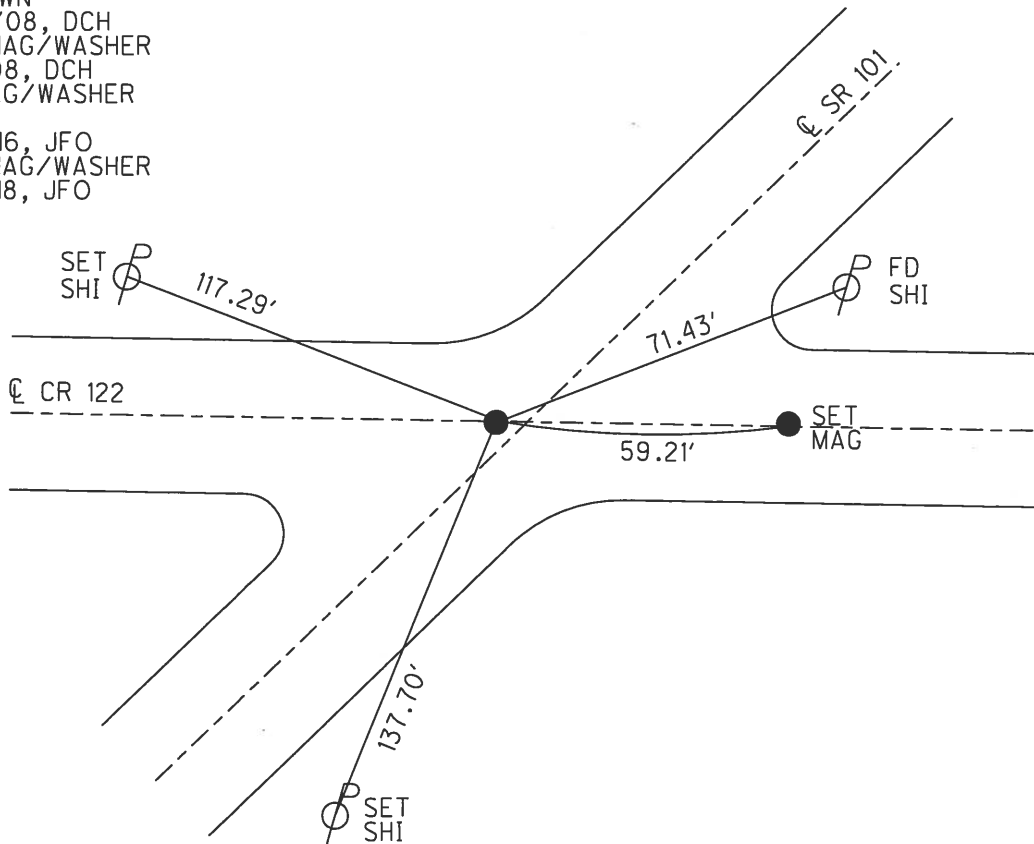
GEOID: 2012A NAVD88

GRID: NORTHING: 536970.433

EASTING: 1793101.321



RECORD: P.I.  
 $\Delta = 0^\circ 38' RT$   
 STA 85+96  
 3-11-70  
 SET P.K./WASHER  
 9-30-92  
 FD MINE SPIKE  
 2" DOWN  
 6/24/08, DCH  
 SET MAG/WASHER  
 10-1-08, DCH  
 FD MAG/WASHER  
 REF14  
 10-11-16, JFO  
 SET MAG/WASHER  
 10-9-18, JFO





O.D.O.T. DISTRICT 2 SURVEY OFFICE

PERSONNEL \_\_\_\_\_

REFERENCE NO. 14

SHEET 15 OF 27

NOTES CHENEY

DATE 7/20/92

ROUTE SR 101

H.C. RIPPLE

WEATHER SUNNY

COUNTY SENECA

R.C. BARBOUR

TEMP. 60°

TOWNSHIP CLINTON

GEYMAN

SECTION 16 & 9

T 2 N R 15 E

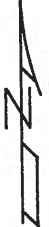
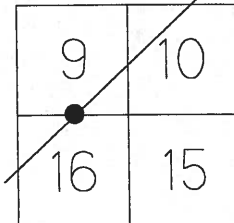
TYPE MONUMENT MINE SPIKE

ON SURFACE - ~~BELOW~~ ON

LEFT - Q PAV'T - ~~RIGHT~~ 1.5'

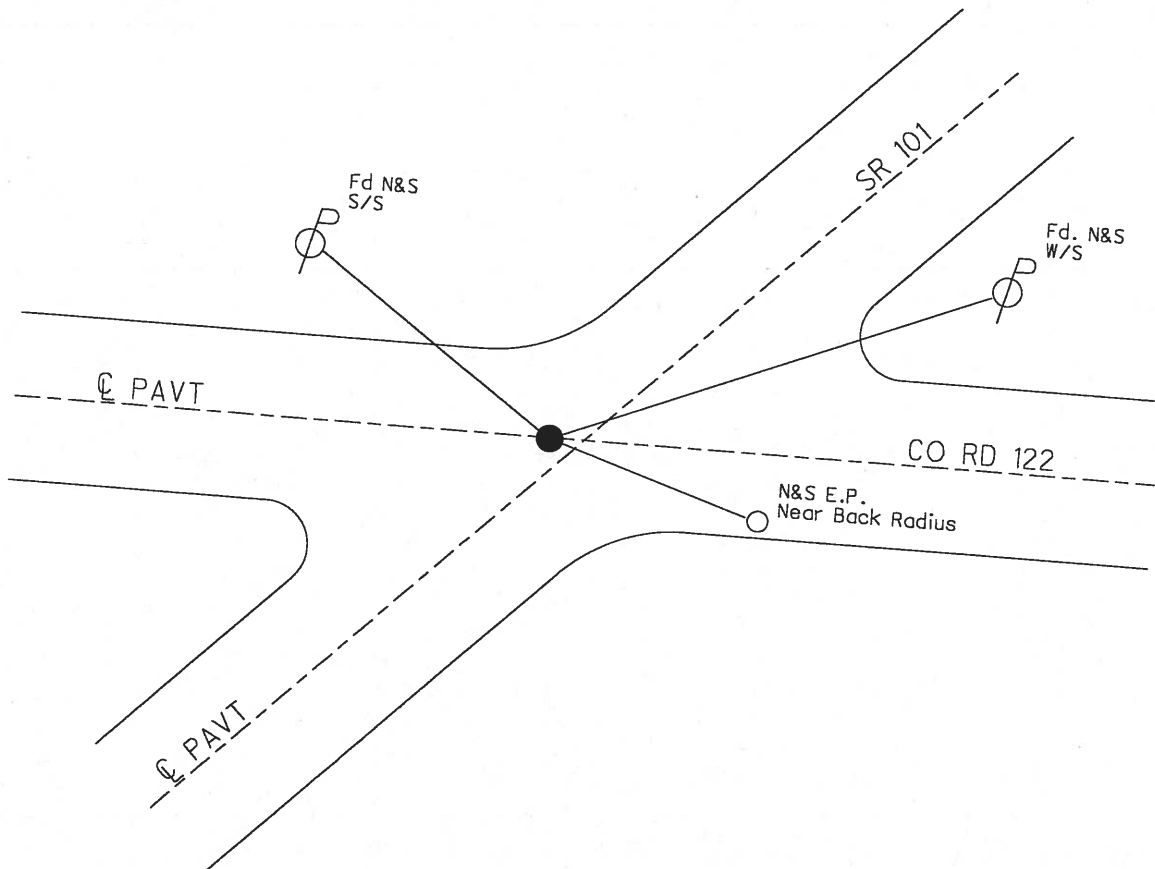
8.6' TO LT EDGE PAVEMENT

S.L.M. 171+60



Record: P.I. Delta = 0°38' RT  
 STA 85+96.0 3-11-70

SET P.K./WASHER  
 9/30/92



O.D.O.T. DISTRICT 2 SURVEY OFFICE

PERSONNEL

REFERENCE NO. 14

SHEET 14 OF 26

NOTES Cheney

H.C. RIPPLE

R.C. BARBOUR

Geyman

DATE 7-20-92

WEATHER SUNNY

TEMP. 60°

ROUTE SR#101

COUNTY SENECA

TOWNSHIP CLINTON

SECTION 16 E 9

T 2 N R 15 E

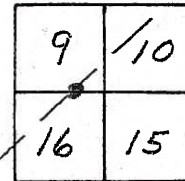
TYPE MONUMENT Mine Spk set Pk. & Washer

ON SURFACE - BELOW yes

LEFT-☉ PAV'T. - RIGHT 1.5'

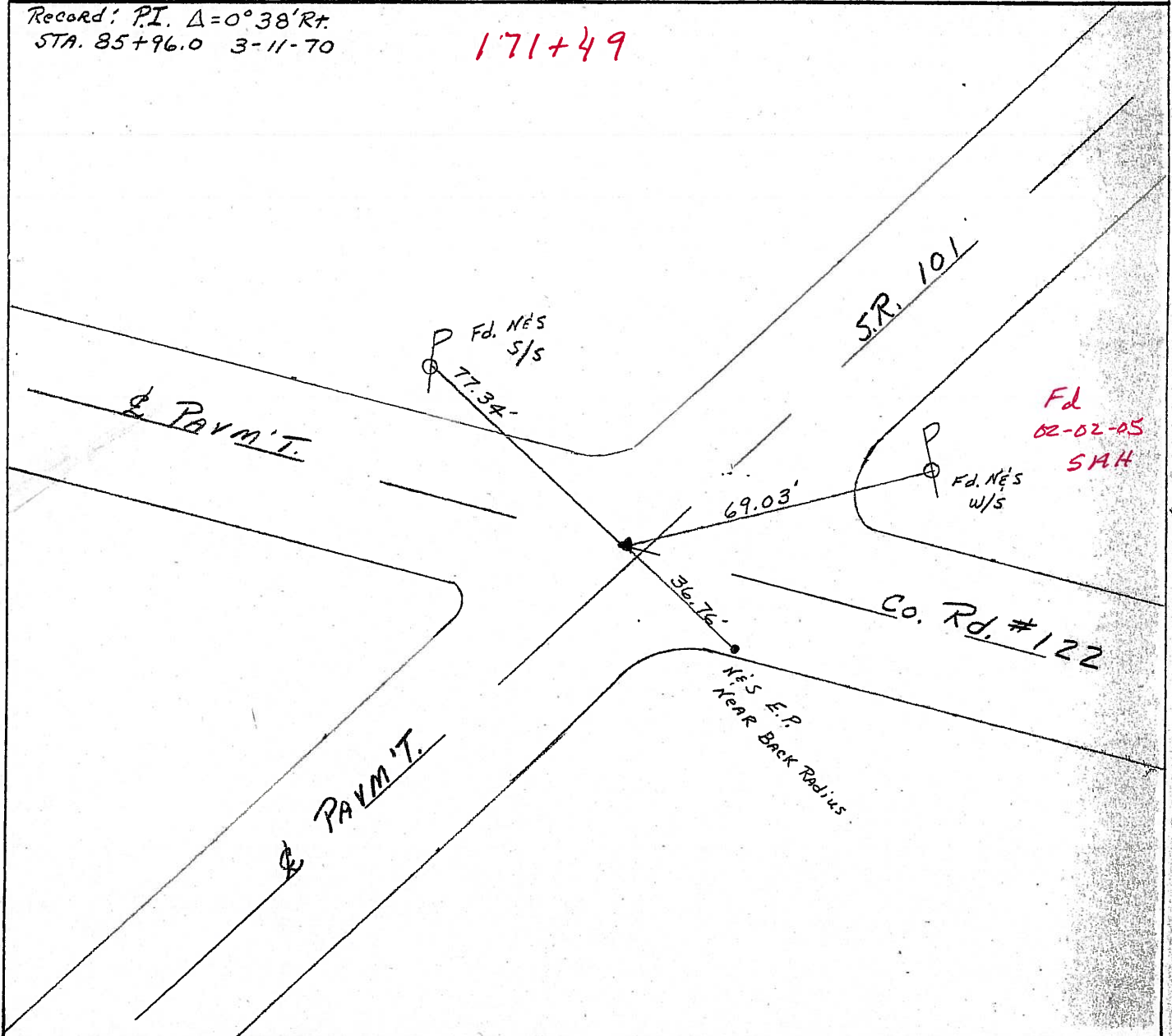
8.6 TO LT. EDGE PAVEMENT

S.L.M. 171+60



Record: P.I.  $\Delta = 0^\circ 38' Rt.$   
 STA. 85+96.0 3-11-70

171+49



O.D.O.T. DISTRICT 2 SURVEY OFFICE

PERSONNEL

REFERENCE NO. 14

SHEET 18 OF 26

NOTES Cheney

H.C. RIPPLE

R.C. BARBOUR

Geyman

DATE 7-20-92

WEATHER SUNNY

TEMP. 60°

ROUTE SR#101

COUNTY Seneca

TOWNSHIP CLINTON

SECTION 16 E 9

T 2 N R 15 E

TYPE MONUMENT Mine SpK 3-11-70 set P.K. & washer

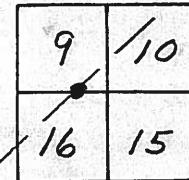
9-30-92

ON SURFACE - BELOW yes

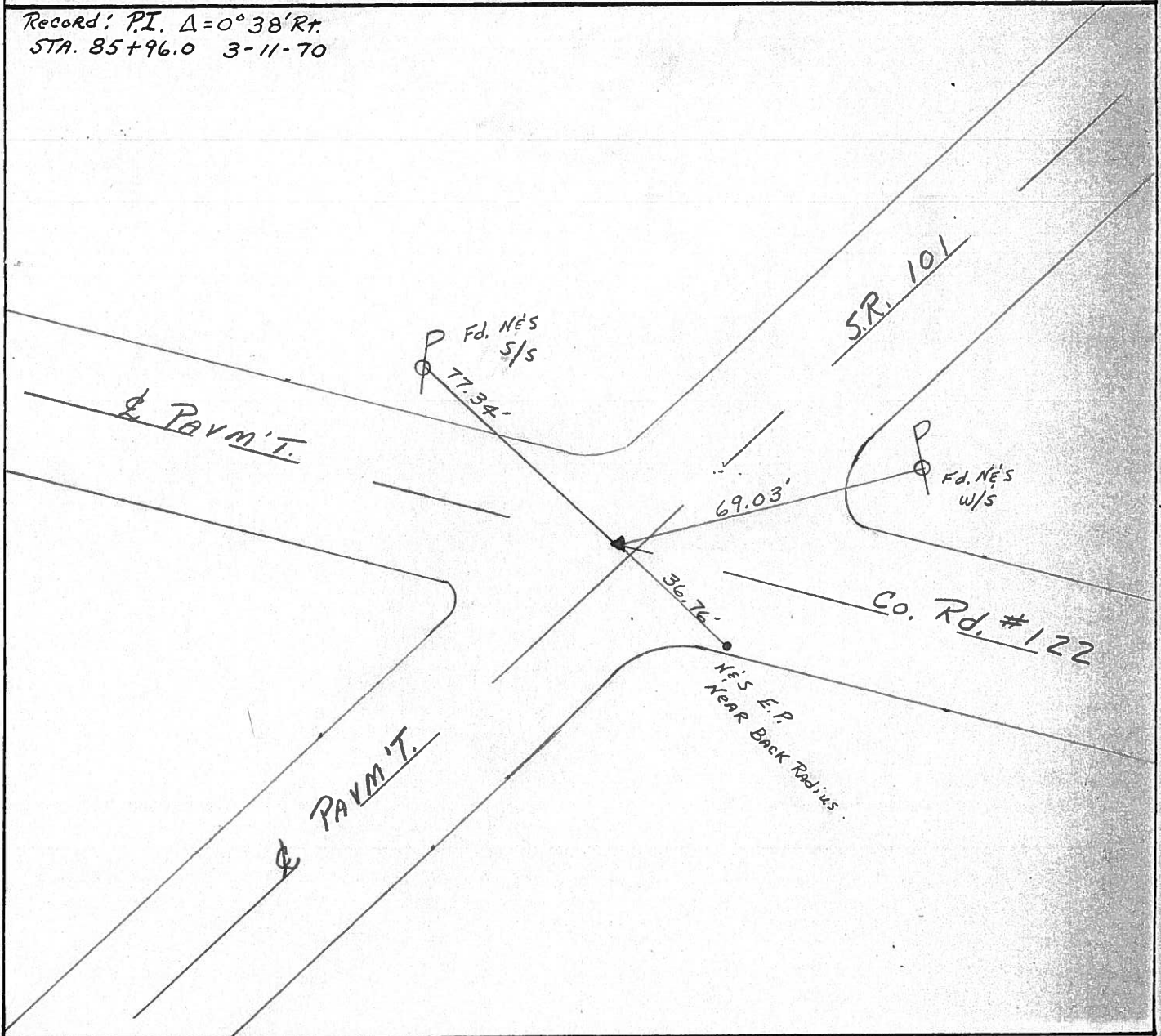
LEFT- & PAV'T. - RIGHT 1.5'

8.6 TO LT. EDGE PAVEMENT

S.L.M. 171+60



Record: P.I.  $\Delta = 0^\circ 38' R$   
 STA. 85+96.0 3-11-70



PERSONNEL TITLE PERSONNEL TITLE

COUNTY Seneca DATE 3/11/70

Ash \_\_\_\_\_

S. R. #101 (ICH #271) WEATHER sunny

Cronin \_\_\_\_\_

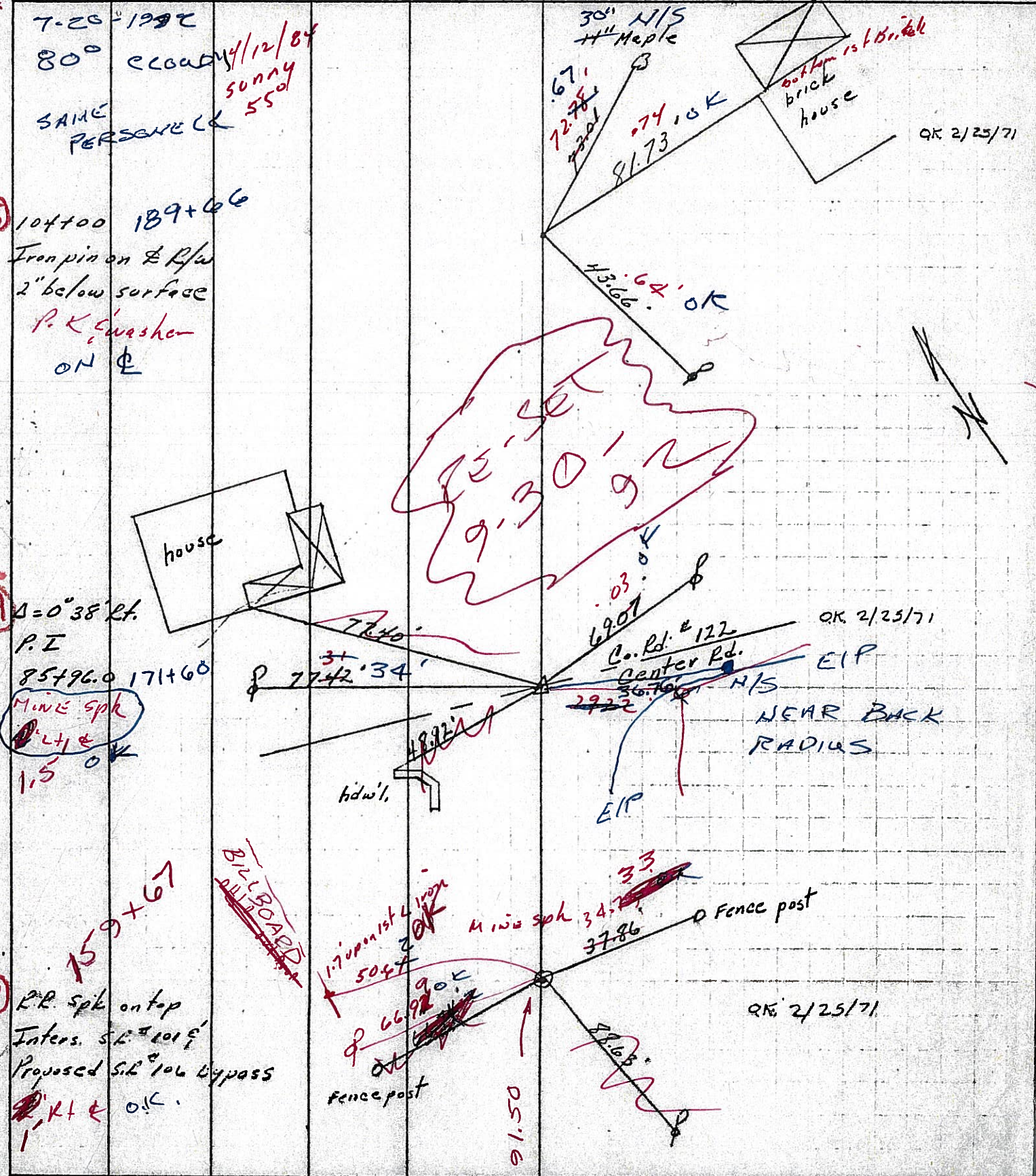
SEC. F-K-O-J TEMP. 30°

Ripple \_\_\_\_\_

Geyman \_\_\_\_\_

DESCRIPTION Ties for Control Points - Tiffin Corp. to Sandusky Co. Line JOB NO. \_\_\_\_\_

104700  
189+66  
946.65



7-20-1992  
80° cloudy  
SAME PERSONNEL  
4/12/84 sunny 55°

15) 104700 189+66  
Iron pin on E R/W  
2" below surface  
P. K. Washer on E

14) Δ = 0°38' Rt.  
P.I.  
85796.0 171+60  
Mine sph  
1.5 OK

13) RR Spk on top  
Inters. S.R. #101 E  
Proposed S.R. #106 Bypass  
1' K1 & OK

30" N/S  
11" Maple  
72.74  
72.01  
81.73  
74 OK  
brick house  
OK 2/25/71

13.64 OK

77.40  
31  
77.42 34'  
69.01  
Co. Rd. #122  
Center Rd.  
36.76  
29.22  
EIP  
NEAR BACK RADIUS  
OK 2/25/71

1.70  
50.47  
66.92  
34.7  
37.86  
Fence post  
05.16  
33  
OK 2/25/71

County SENECA S.R. 101

Date MARCH 1, 83

Township CLINTON

Weather CLEAR

Section 16

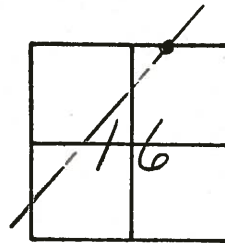
Temp. +45°

T N, R E

Personnel HOFFMAN

LOEHRKE

HOUSEHOLDER



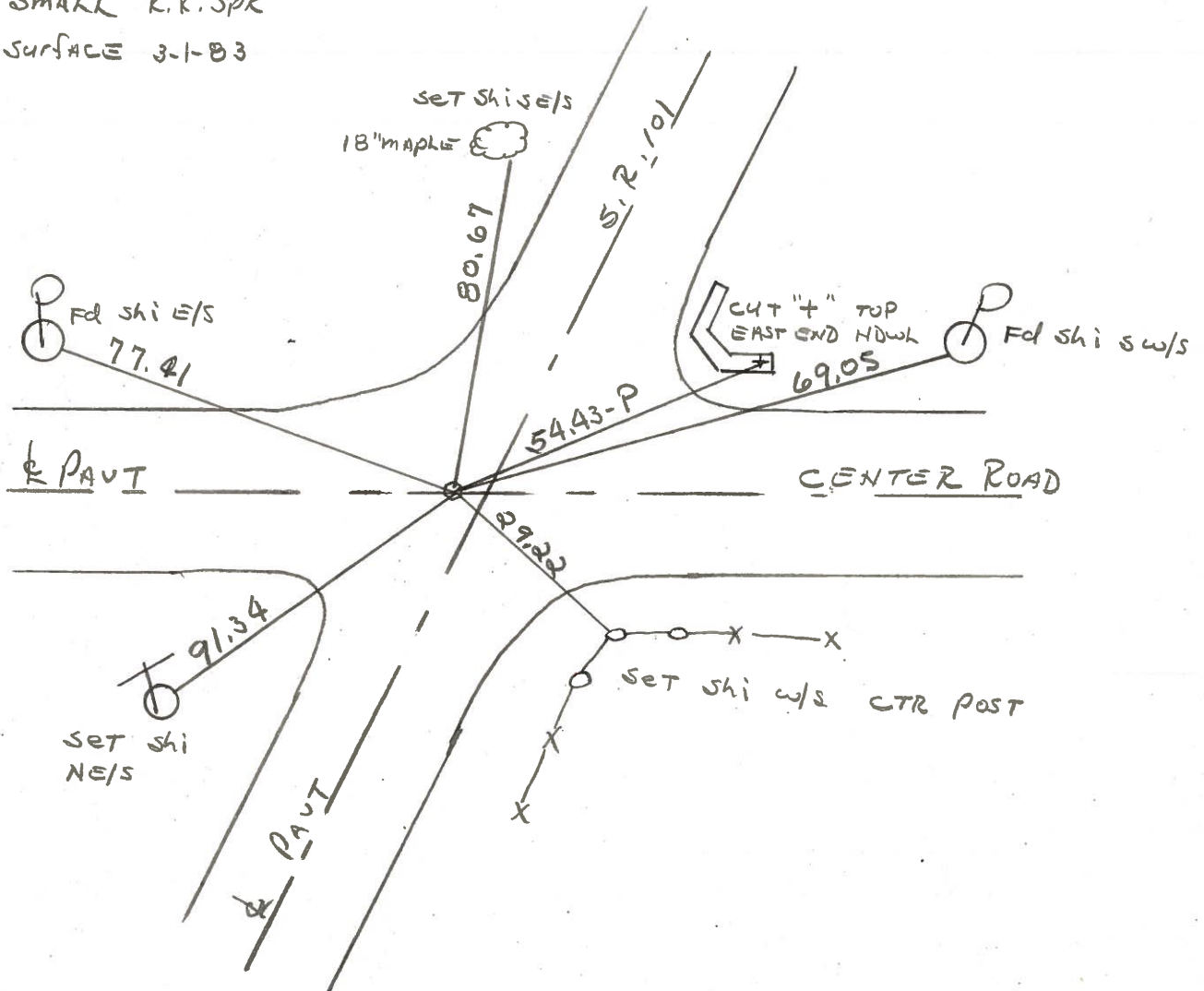
# ~~14~~  
14

Fd 3/4" IRON ROD 5 1/4" BELOW SURFACE  
FROM 1970 REF TIES

1925 PLAN STA 86+00

0.7' LT. of R PAUT SR101

Set SMALL R.R. SPK  
ON SURFACE 3-1-83



PERSONNEL TITLE PERSONNEL TITLE

Ash  
Cromin  
Ripple  
Geyman

COUNTY Seneca

DATE 3/11/70

S. R. #101 (I.C.H. #271)

WEATHER sunny

SEC. E-K-O-1

TEMP 30°

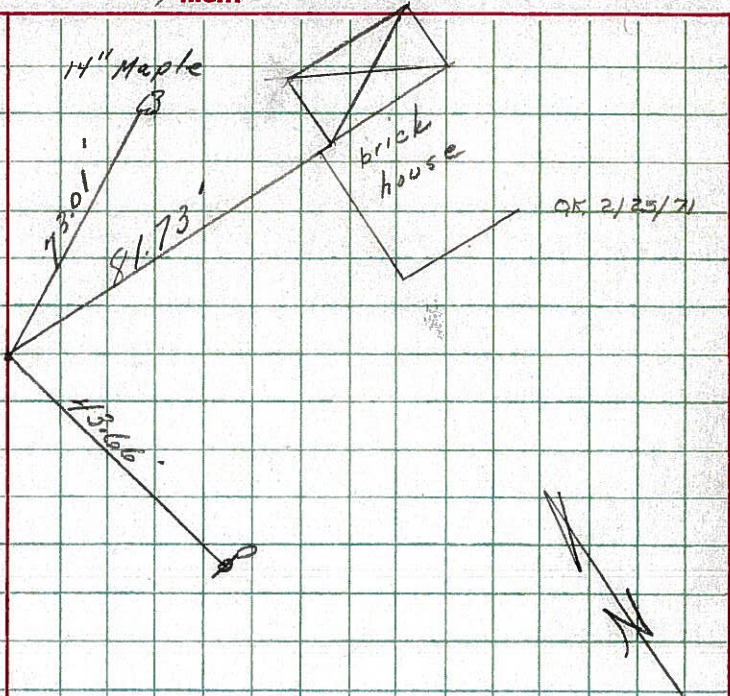
DESCRIPTION Ties for Control Points - Tiffin Corp to Sandosky Co. Line JOB NO.

LEFT CENTER LINE RIGHT

15

104+00

Iron pin on E. R/W  
2" below surface

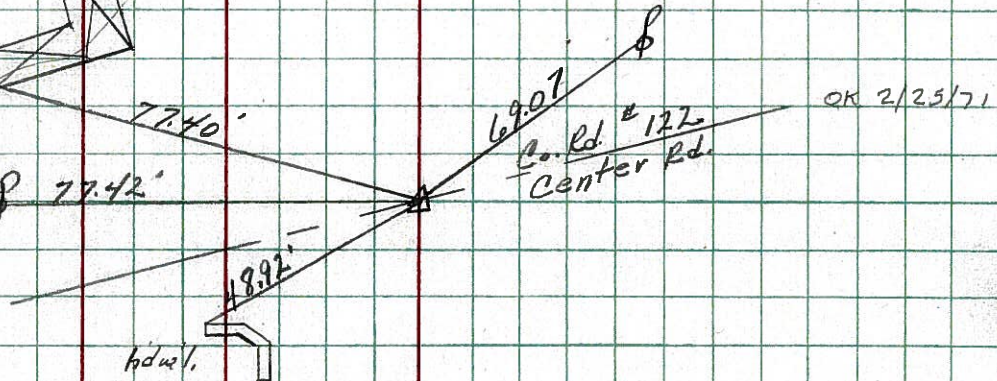
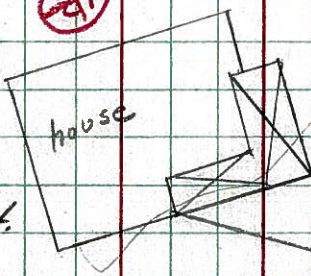


14

$\Delta = 0^\circ 38' \text{ Rt.}$

P.I

85+96.0

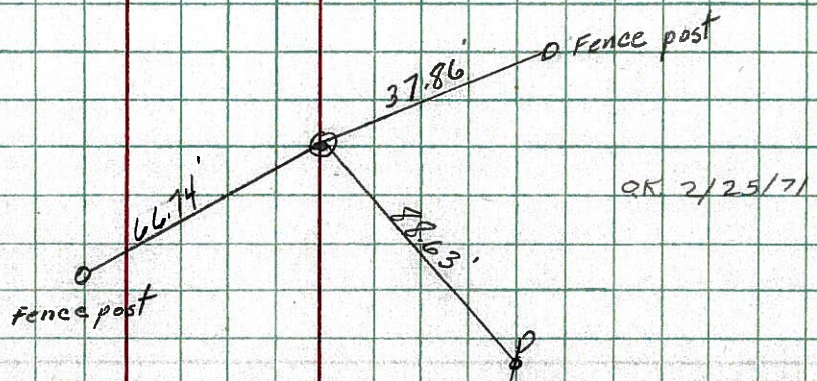


13

R.R. spike on top

Inters S.R. #101

Proposed S.R. #106 Bypass

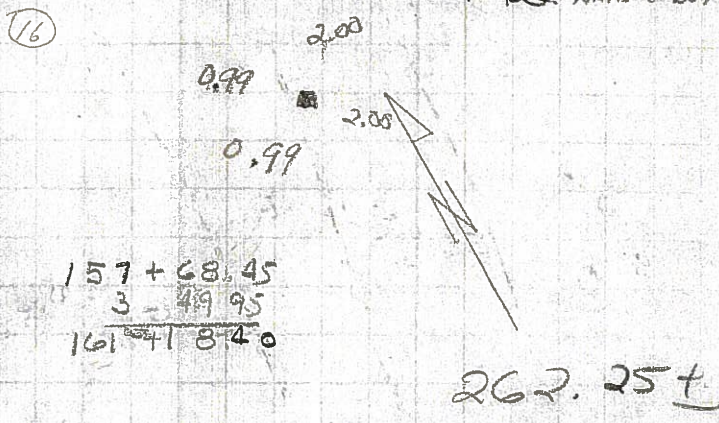
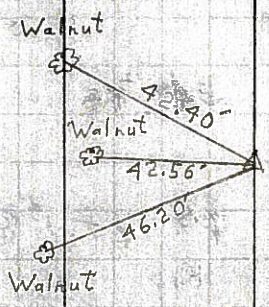




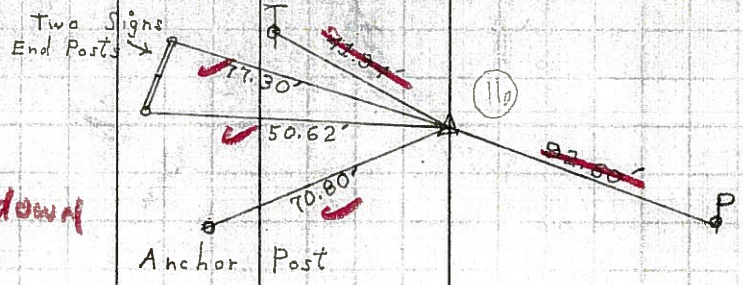
PERSONNEL	TITLE	PERSONNEL	TITLE	COUNTY	DATE	WEATHER	TEMP
Krabill				Seneca	2-3-64		
Kowalski				# 101			
Geyman							
				SEC			

DESCRIPTION LEFT CENTER LINE RIGHT JOB NO. 2-24-83

11  
 STA. 67+00  
 P. K.  
 # 365

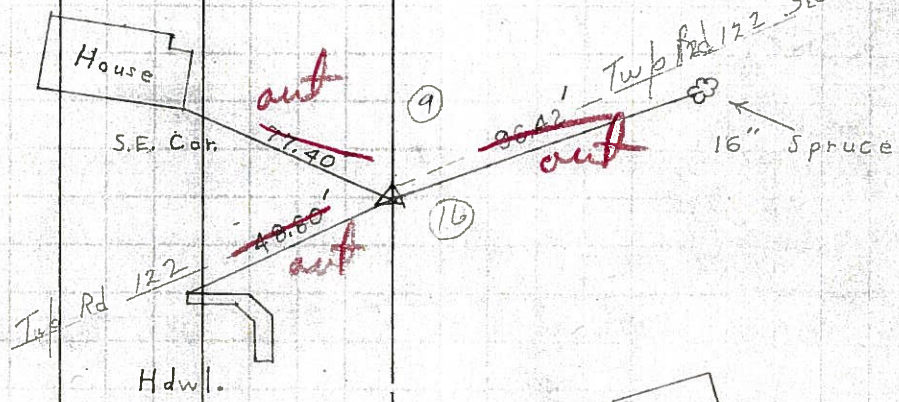


14  
 STA. 74+00  
 Iron Pin  
 # 366  
 FOL IRON PIN 3' DOWN

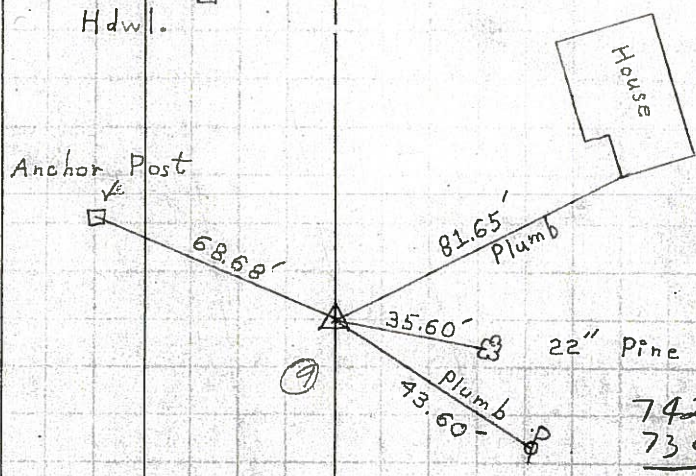


74+00  
 70+50  
 3+50  
 262  
 ---  
 18 8

14  
 STA. 86+00  
 Iron Pin  
 # 367  
 FOL 3/4"  
 IRON PIN 2-28-83  
 5 1/4" DOWN SURF



15  
 STA. 104+00  
 Iron Pin  
 # 368



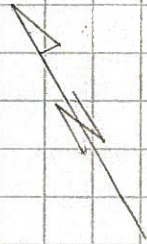
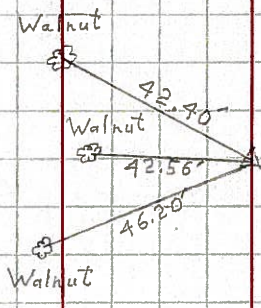
743.95  
 9.9  
 734.0  
 -----  
 742.93 742.9  
 734.0 737.9  
 -----  
 8.9 55.0

PERSONNEL TITLE PERSONNEL TITLE COUNTY Seneca DATE 2-3-64  
 # 101 WEATHER  
 SEC. TEMP.

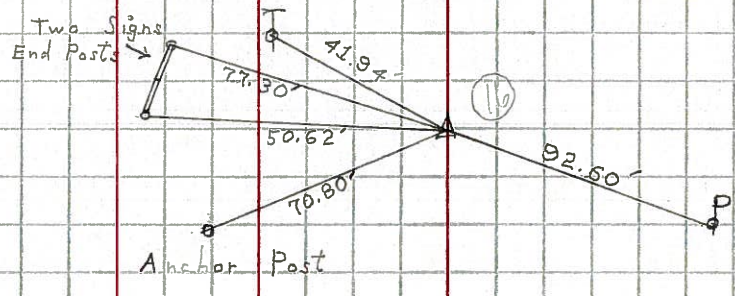
DESCRIPTION LEFT CENTER LINE RIGHT JOB NO.

11

STA. 67+00  
 P. K. # 365

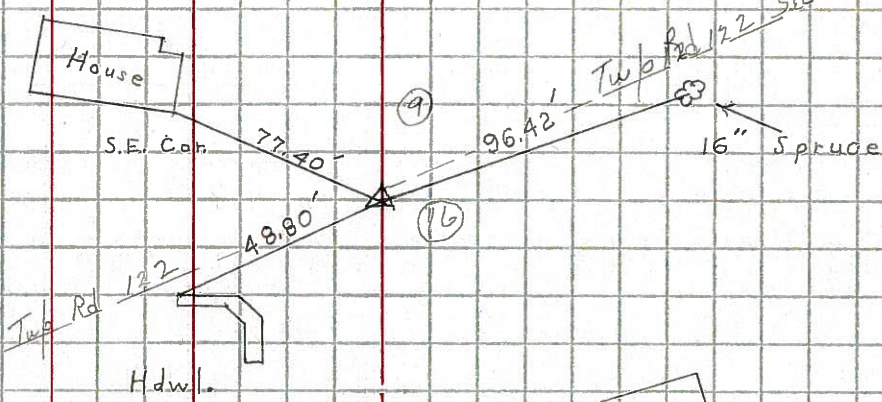


STA. 74+00  
 Iron Pin # 366



14

STA. 86+00  
 Iron Pin # 367



15

STA. 104+00  
 Iron Pin # 368

