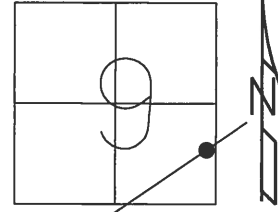


O.D.O.T. DISTRICT 2 SURVEY OFFICE (USE ONLY)

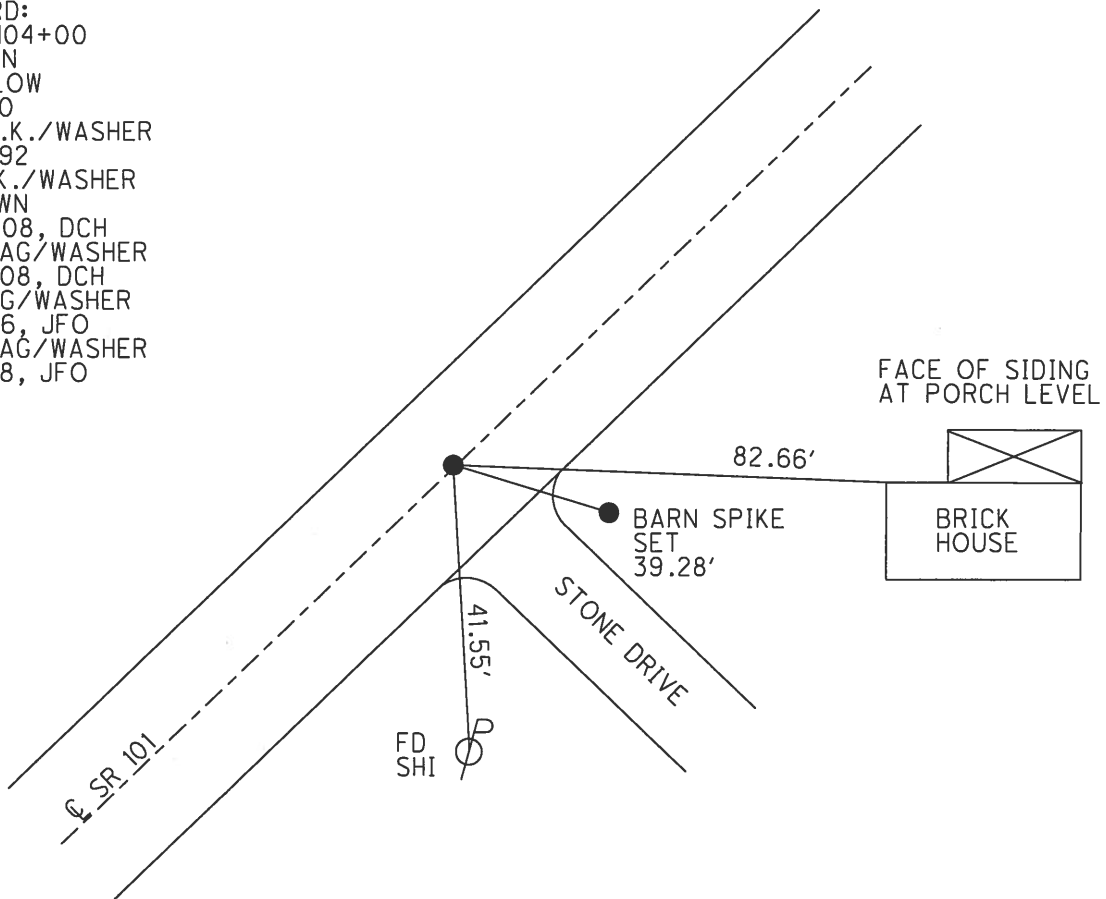
PERSONNEL _____ REFERENCE NO. 15 SHEET 16 OF 27
 NOTES SEAMAN DATE 3/22/18 ROUTE SR 101
 H.C. O'DONNELL WEATHER SUNNY COUNTY SENECA
 R.C. SEAMAN TEMP. 40° TOWNSHIP CLINTON
 SECTION 9
 DWG BY MILLER PID 102817 T 2 N R 15 E

TYPE MONUMENT _____ MAG/WASHER _____
~~ON SURFACE~~ - BELOW 3"
 OFFSET \odot PAVEMENT 0.7' \pm : RT
10.1' TO RT EDGE PAVEMENT



STATION: 189+61.91
 HORZ. DATUM: NAD83 2011 GEOID: 2012A NAVD88
 GRID: NORTHING: 538150.587 EASTING: 1794464.646

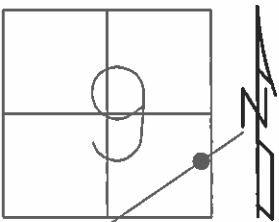
RECORD:
 STA. 104+00
 FD IPIN
 2" BELOW
 3-11-70
 SET P.K./WASHER
 9-30-92
 FD P.K./WASHER
 3" DOWN
 6/24/08, DCH
 SET MAG/WASHER
 10-14-08, DCH
 FD MAG/WASHER
 10-11-16, JFO
 SET MAG/WASHER
 10-9-18, JFO



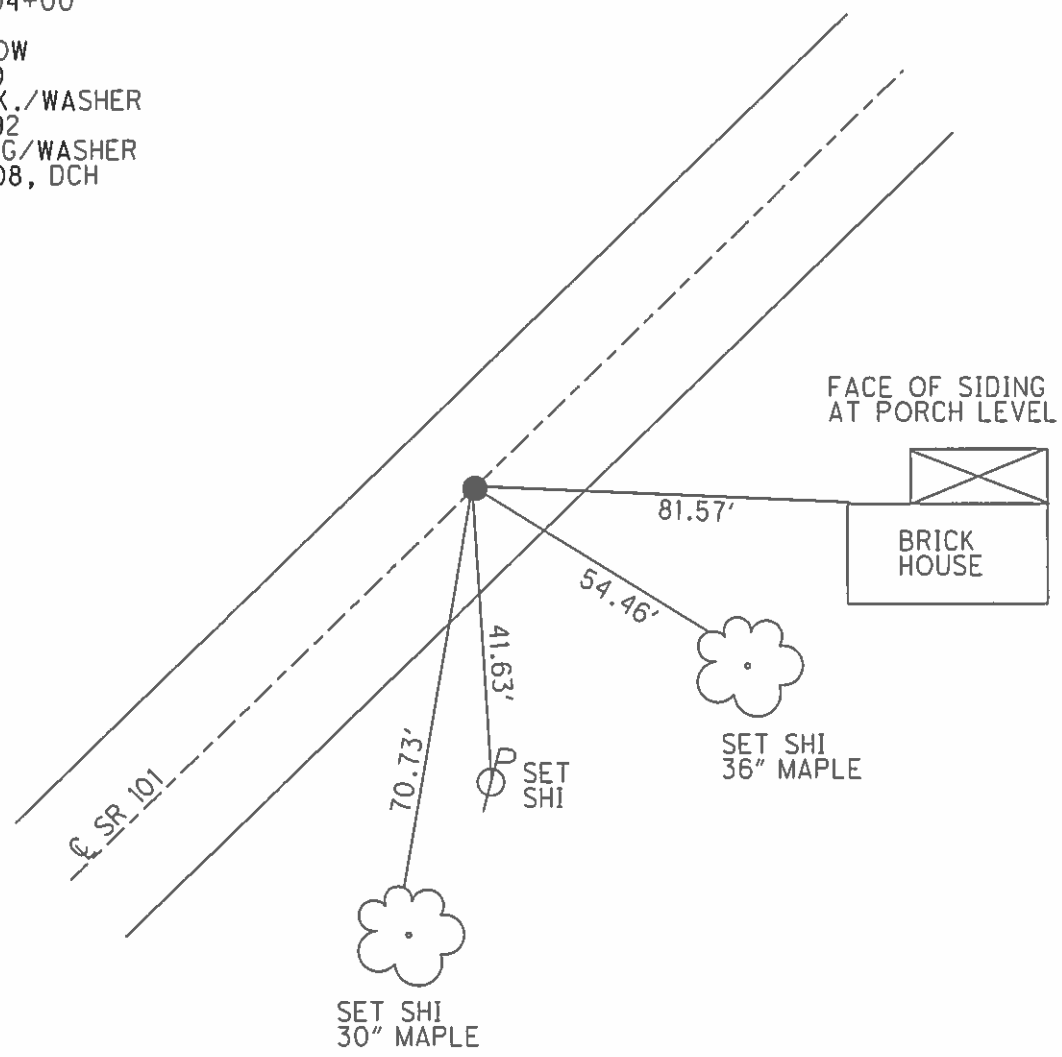
O.D.O.T. DISTRICT 2 SURVEY OFFICE (USE ONLY)

PERSONNEL _____ REFERENCE NO. 15 SHEET 16 OF 27
 NOTES HOMAN DATE 6-24-08 ROUTE SR 101
 H.C. ROUSOS WEATHER CLOUDY COUNTY SENECA
 R.C. HOMAN TEMP. 75° TOWNSHIP CLINTON
 _____ SECTION 9
 _____ T 2 N R 15 E

TYPE MONUMENT P.K./WASHER
~~ON SURFACE~~ - BELOW 3"
 LEFT - ☉ PAV'T - RIGHT ON
10.1' TO RT EDGE PAVEMENT
 S.L.M. 189+66
 GRID: NORTHING: 538150.591 EASTING: 1794464.605



RECORD:
 STA. 104+00
 IPIN
 2" BELOW
 3/11/70
 SET P.K./WASHER
 9/30/92
 SET MAG/WASHER
 10/14/08, DCH



O.D.O.T. DISTRICT 2 SURVEY OFFICE

PERSONNEL

REFERENCE NO. 15

SHEET 16 OF 27

NOTES CHENEY

DATE 7/20/92

ROUTE SR 101

H.C. RIPPLE

WEATHER SUNNY

COUNTY SENECA

R.C. BARBOUR

TEMP. 60°

TOWNSHIP CLINTON

GEYMAN

SECTION 9&10

T 2 N R 15 E

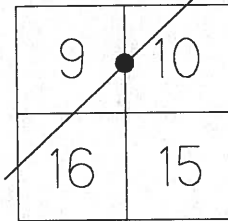
TYPE MONUMENT P.K./WASHER

ON SURFACE - ~~BELOW~~ ON

LEFT - C PAV'T - RIGHT ON

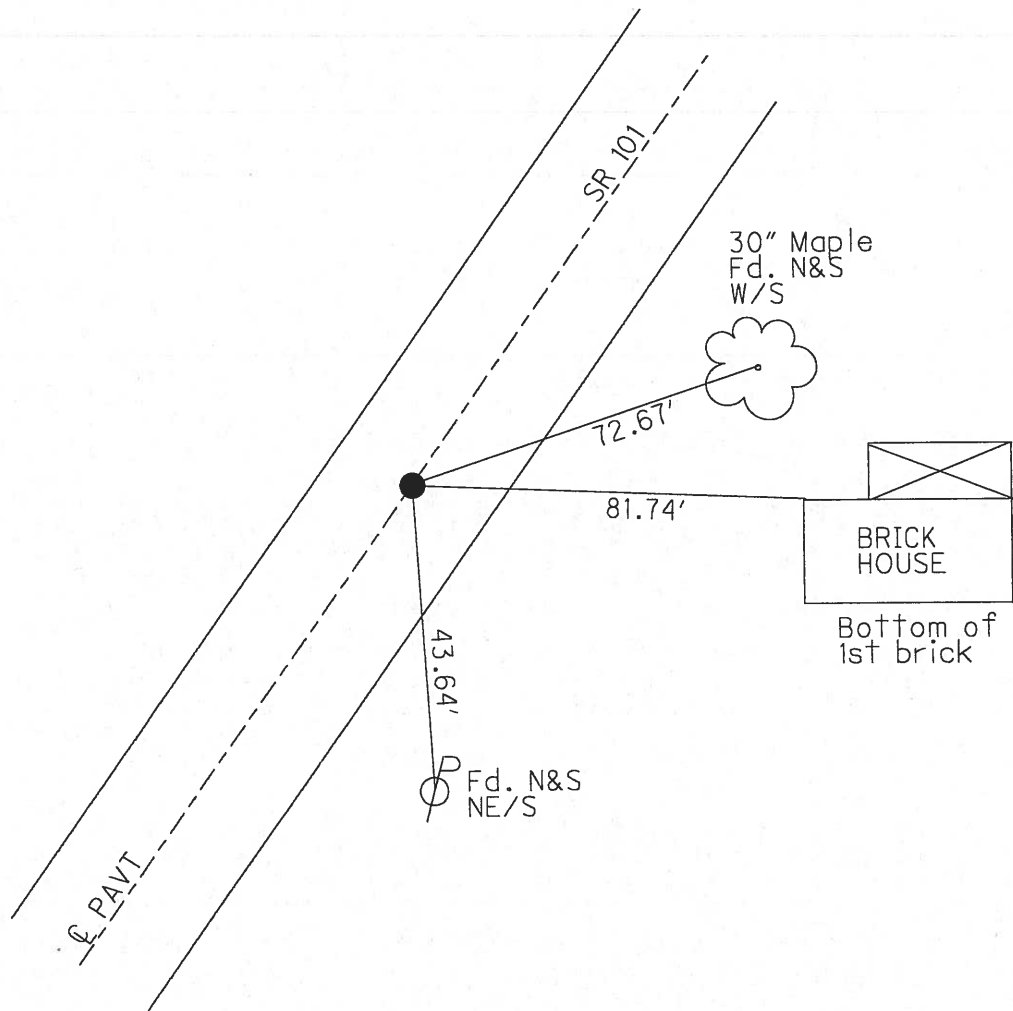
10.1' TO RT EDGE PAVEMENT

S.L.M. 189+66



Record: 3-11-70
 STA. 104+00 Iron Pin
 on C.L. 2" below surface
 of R/W

SET P.K./WASHER
 9/30/92



O.D.O.T. DISTRICT 2 SURVEY OFFICE

PERSONNEL

REFERENCE NO. 15

SHEET 15 OF 26

NOTES Choney

H.C. RIPPLE

R.C. BARBOUR

Geyman

DATE 7-20-92

WEATHER SUNNY

TEMP. 60°

ROUTE SR#101

COUNTY Seneca

TOWNSHIP CLINTON

SECTION 9E10

T2N R15E

TYPE MONUMENT P.K. / WASHER SET P.K. & WASHER 9-30-92

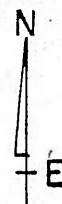
ON SURFACE - BELOW yes

~~LEFT~~ & ~~PAV'T.~~ - ~~RIGHT~~ yes

10.1 TO PT. EDGE PAVEMENT

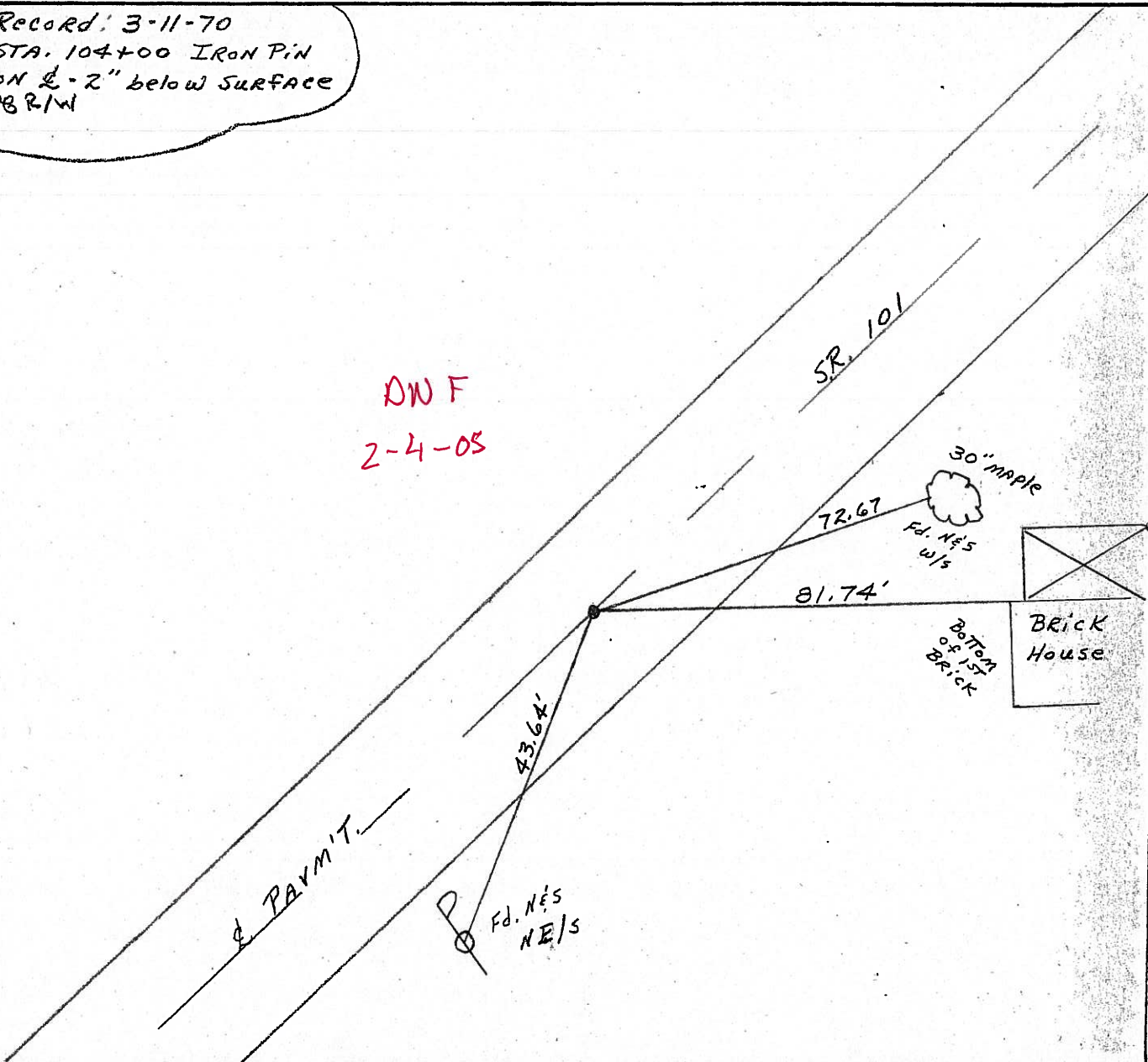
S.L.M. 189+66

| | |
|----|----|
| 9 | 10 |
| 16 | 15 |



Record: 3-11-70
 STA. 104+00 IRON PIN
 ON \pm 2" below SURFACE
 DB R/W

DN F
 2-4-05



O.D.O.T. DISTRICT 2 SURVEY OFFICE

PERSONNEL

REFERENCE NO. 15

SHEET 16 OF 26

NOTES Cheney

H.C. Ripple

DATE 7-20-92

ROUTE SR#101

R.C. Barbour

WEATHER SUNNY

COUNTY Seneca

Geyman

TEMP. 60°

TOWNSHIP CLINTON

SECTION 9E10

T2 N R 15 E

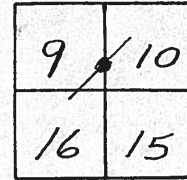
TYPE MONUMENT P.K. / WASHER SET P.K. Washer
9-30-92

ON SURFACE - BELOW yes

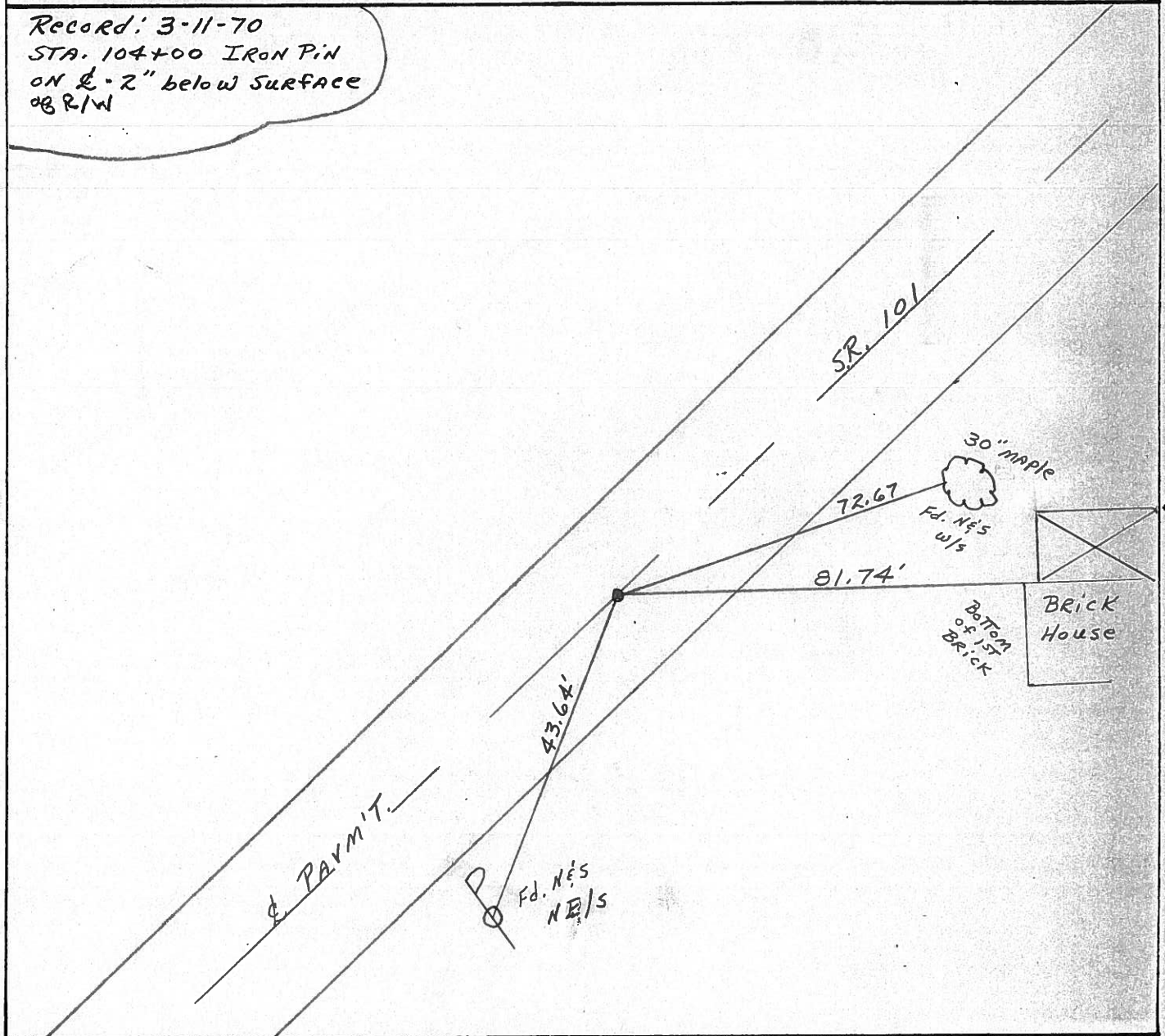
~~LEFT~~ & ~~PAV'T.~~ - ~~RIGHT~~ yes

100 TO RT. EDGE PAVEMENT

S.L.M. 189+66



Record: 3-11-70
 STA. 104+00 IRON PIN
 ON ϕ - 2" below SURFACE
 of R/W



PERSONNEL TITLE PERSONNEL TITLE

COUNTY Seneca

DATE 3/11/70

S. R. #101 (ICH #271)

WEATHER sunny

SEC I-K-O-J

TEMP 30°

DESCRIPTION Ties for Control Points - Tiffin Corp. to Sandusky Co. Line JOB NO.

LEFT

CENTER LINE

RIGHT

100
69.6
49.6
6.6

7-20-1992

80° cloudy

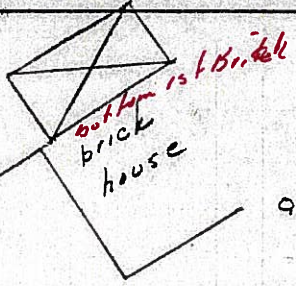
SAME PERSONNEL

4/12/84
sunny
55°

30" N/S
14" Maple

67.1
72.74
72.24

81.73
74.10 K



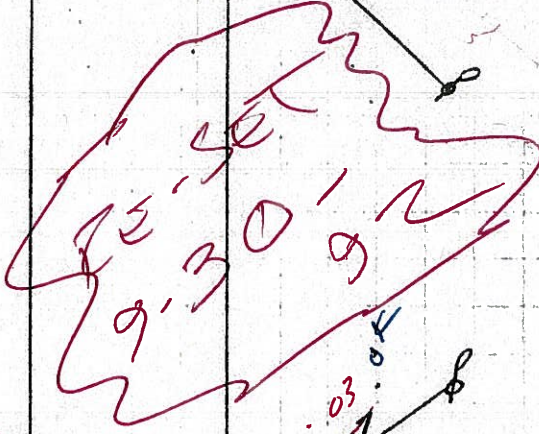
OK 2/25/71

15

104+00 189+66

Iron pin on E R/W
2" below surface
P. K. Washer
on E

43.66
64.0 K



14

Δ = 0° 38' Rt.

P.I

85+96.0 171+60

Mini spk
1.41 &
1.5 OK

77.40
31
77.42.34'

69.01
C. Rd. #122
Center Rd.
36.76
29.22

OK 2/25/71

EIP

NEAR BACK
RADIUS

hdw'l.

EIP

13

R.R. Spk on top
Inters. S.R. #101 &
Proposed S.R. #106 bypass
1.41 & OK

BILLBOARD

17' monument 4 iron
50.47
66.92 OK

Mini spk 34.77

37.86

Fence post

OK 2/25/71

fence post

05.16

72.63

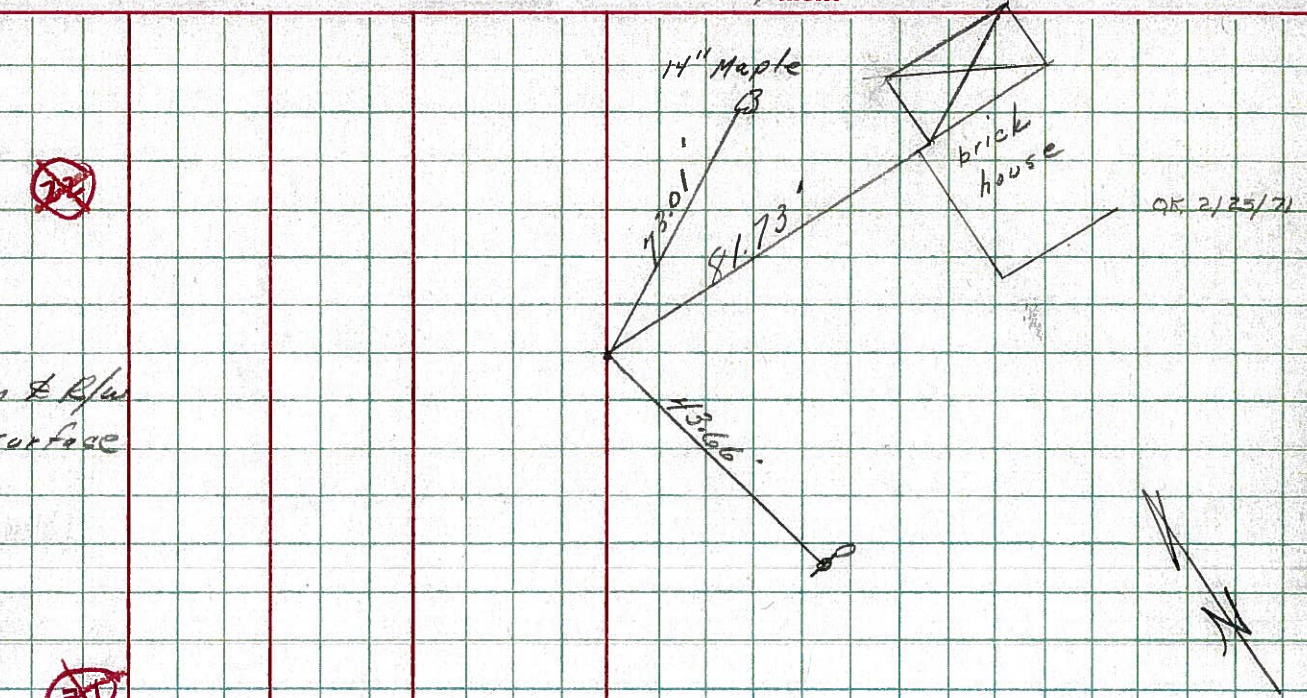
| PERSONNEL | TITLE | PERSONNEL | TITLE |
|-----------|-------|-----------|-------|
| Ash | | | |
| Cronin | | | |
| Ripple | | | |
| Geyman | | | |

COUNTY Seneca DATE 3/11/70
 S. R. # 101 (I.C.H. #271) WEATHER sunny
 SEC. I-K-O-I TEMP 30°

DESCRIPTION Ties for Control Points - Tiffin Corp. to Sandusky Co. Line JOB NO. _____
 LEFT CENTER LINE RIGHT

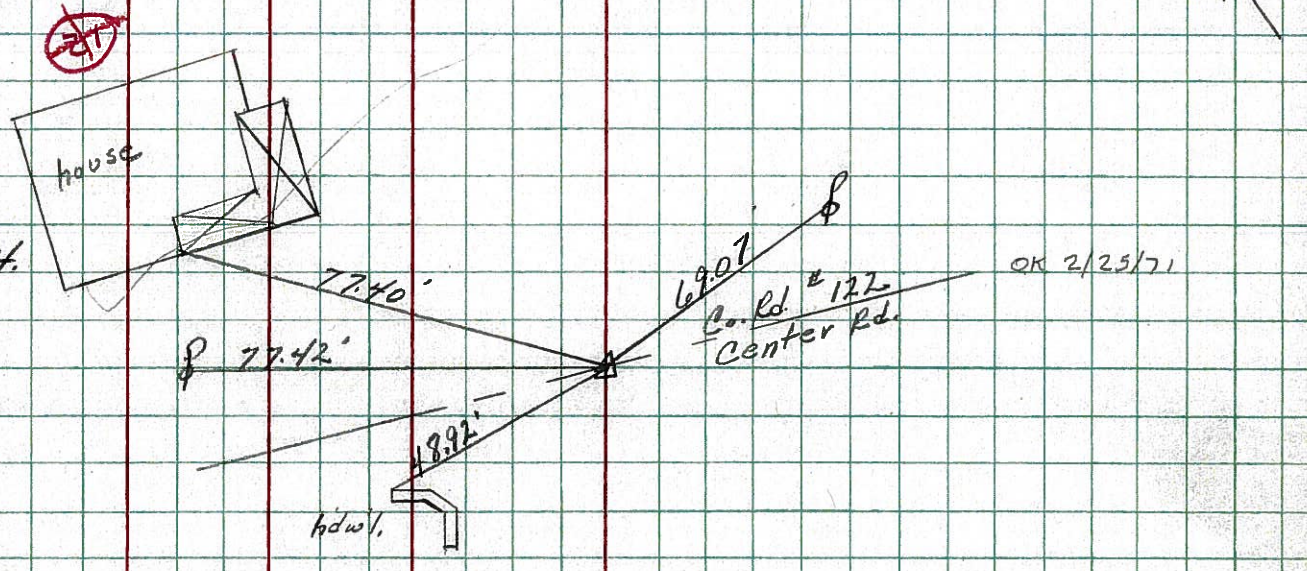
15

104400
 Iron pin on E R/W
 2" below surface



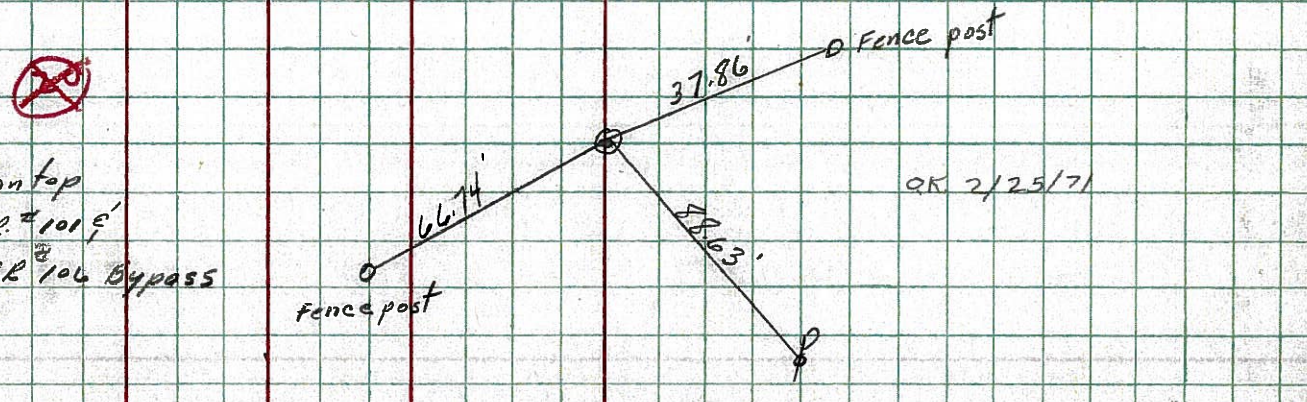
14

$\Delta = 0^\circ 38' \text{ Rt.}$
 P.I
 85+96.0



13

R.R. spike on top
 Intersects S.R. #101
 Proposed S.R. #106 Bypass



PERSONNEL TITLE PERSONNEL TITLE

COUNTY Seneca

DATE 2-3-64

Krabill

S. R. # 101

WEATHER

Kowalaski

SEC.

TEMP.

DESCRIPTION

LEFT

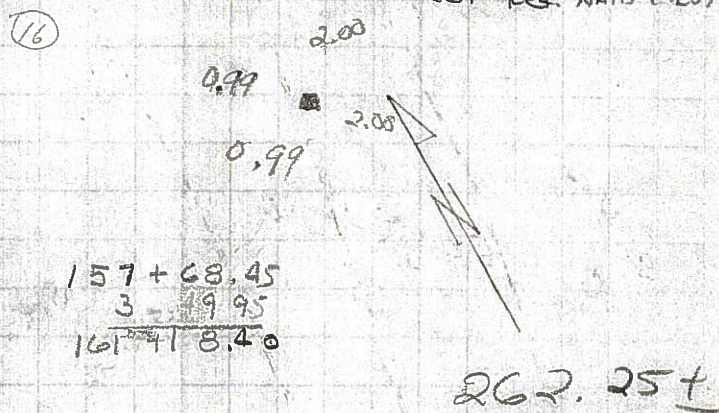
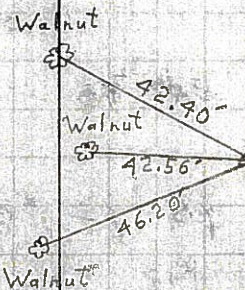
CENTER LINE

RIGHT

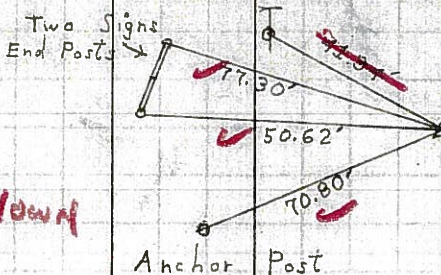
JOB NO.

2-24-83
PULLED P.K.
SET REF. NAILS FIRST

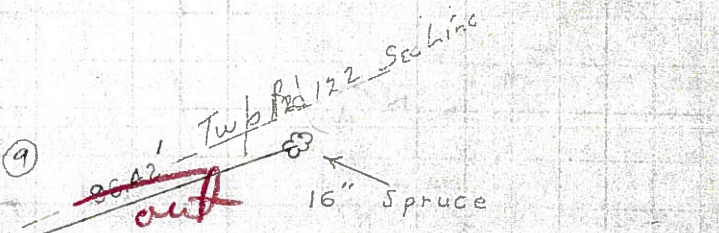
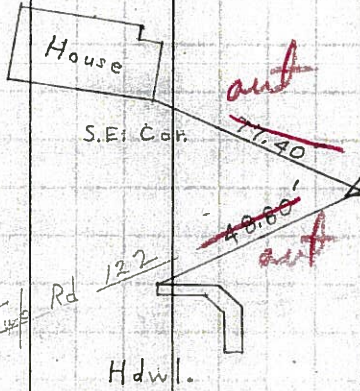
11
STA. 67+00
P. K.
365



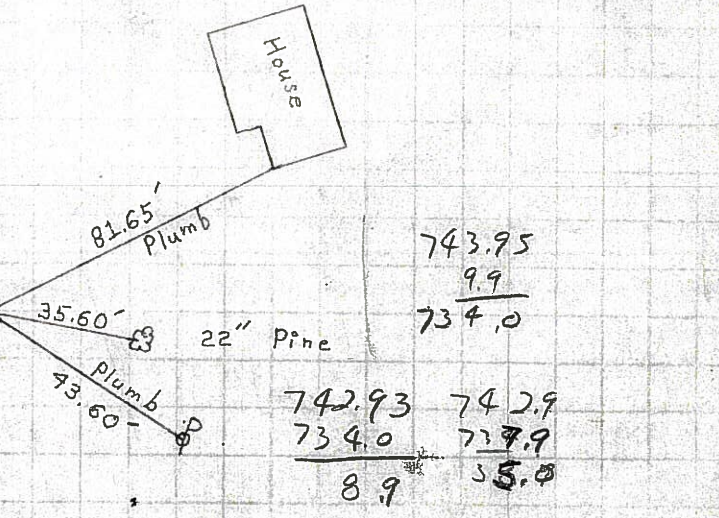
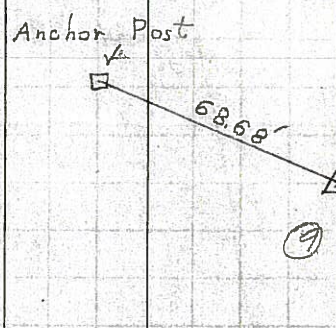
12
STA. 74+00
Iron Pin
366
FD IRON PIN 3' DOWN



14
STA. 86+00
Iron Pin
367
FD 3/4" IRON PIN 2-28-83
5 1/4" DOWN SW



15
STA. 104+00
Iron Pin
368

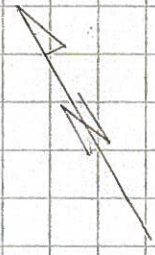
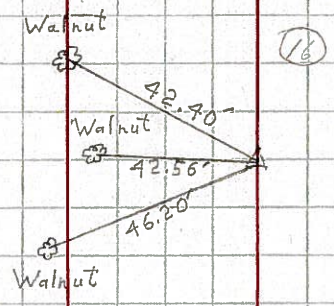


| | | | | | | | |
|-----------|-------|-----------|-------|--------|--------|---------|--------|
| PERSONNEL | TITLE | PERSONNEL | TITLE | COUNTY | Seneca | DATE | 2-3-64 |
| Krabill | | | | S. R. | # 101 | WEATHER | |
| Kowalski | | | | SEC. | | TEMP. | |
| Geyman | | | | | | | |

| | | | | |
|-------------|------|-------------|-------|---------|
| DESCRIPTION | LEFT | CENTER LINE | RIGHT | JOB NO. |
|-------------|------|-------------|-------|---------|

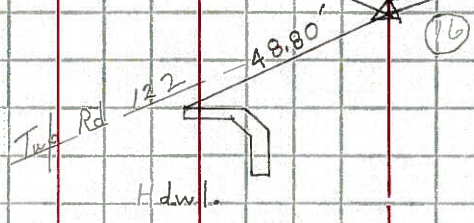
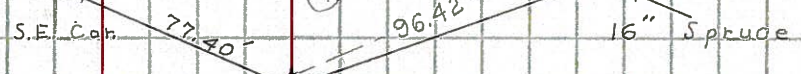
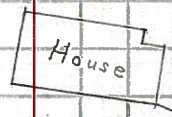
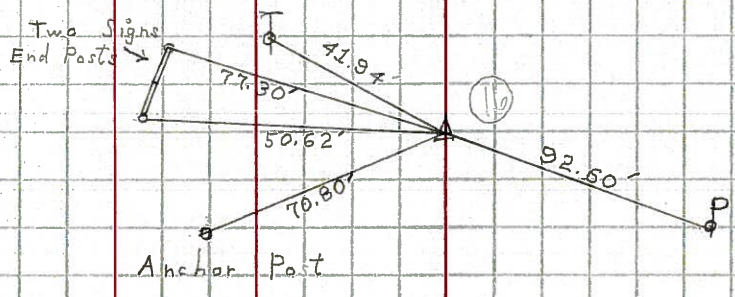
11

STA. 67+00
P. Ke
365



14

STA. 86+00
Iron Pin
367



15

STA. 104+00
Iron Pin
368

