

O.D.O.T. DISTRICT 2 SURVEY OFFICE (USE ONLY)

PERSONNEL

REFERENCE NO. 16

SHEET 17 OF 27

NOTES RHOADES

DATE 3/23/18

ROUTE SR 101

H.C. O'DONNELL

WEATHER SUNNY

COUNTY SENECA

R.C. SEAMAN

TEMP. 30°

TOWNSHIP CLINTON

SECTION 10

DWG BY MILLER

PID 102817

T 2 N R 15 E

TYPE MONUMENT MAG/WASHER

ON SURFACE - ~~BELOW~~ ON

OFFSET 9' TO LT EDGE PAVEMENT LT : RT

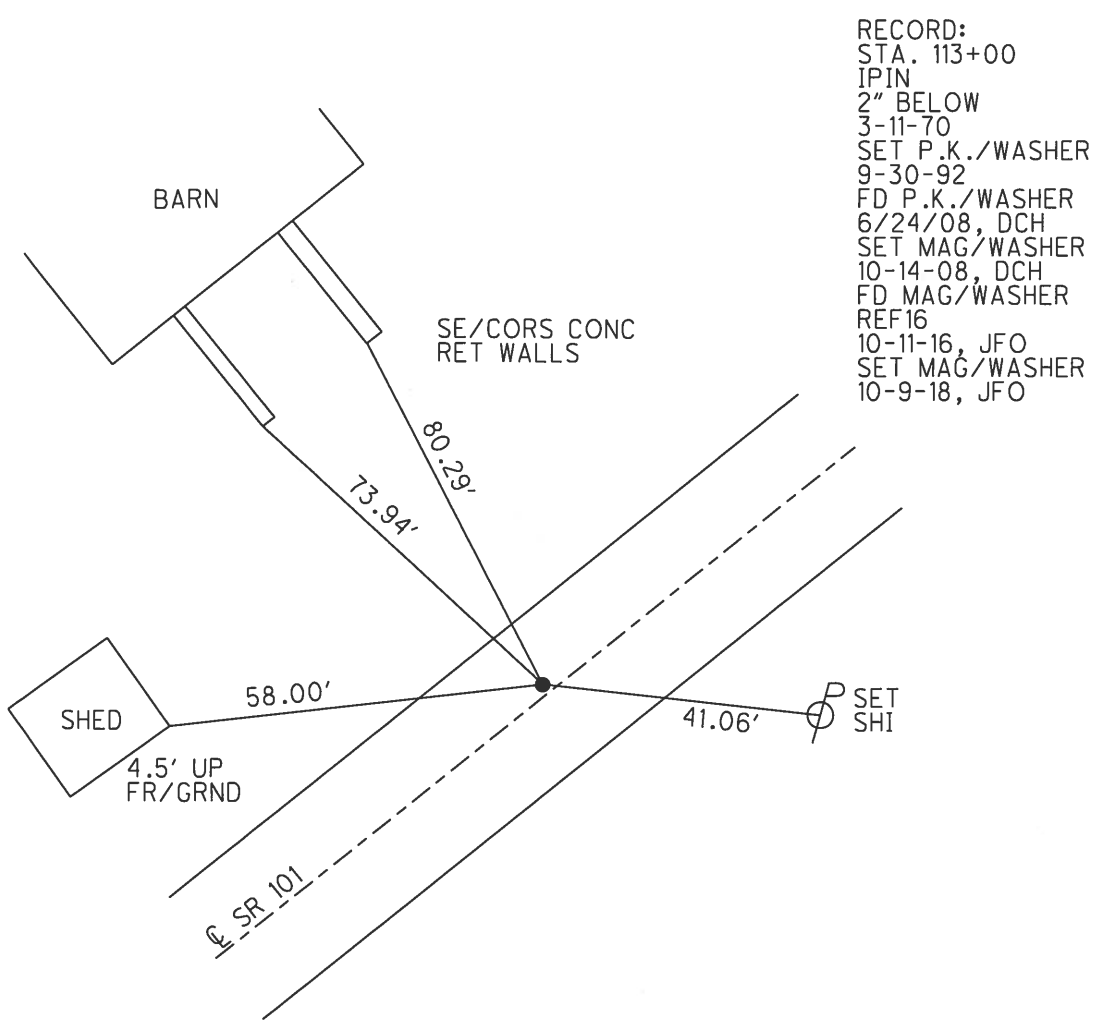
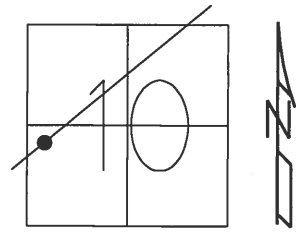
STATION: 198+65.02

HORZ. DATUM: NAD83 2011

GEOID: 2012A NAVD88

GRID: NORTHING: 538746.313

EASTING: 1795143.397

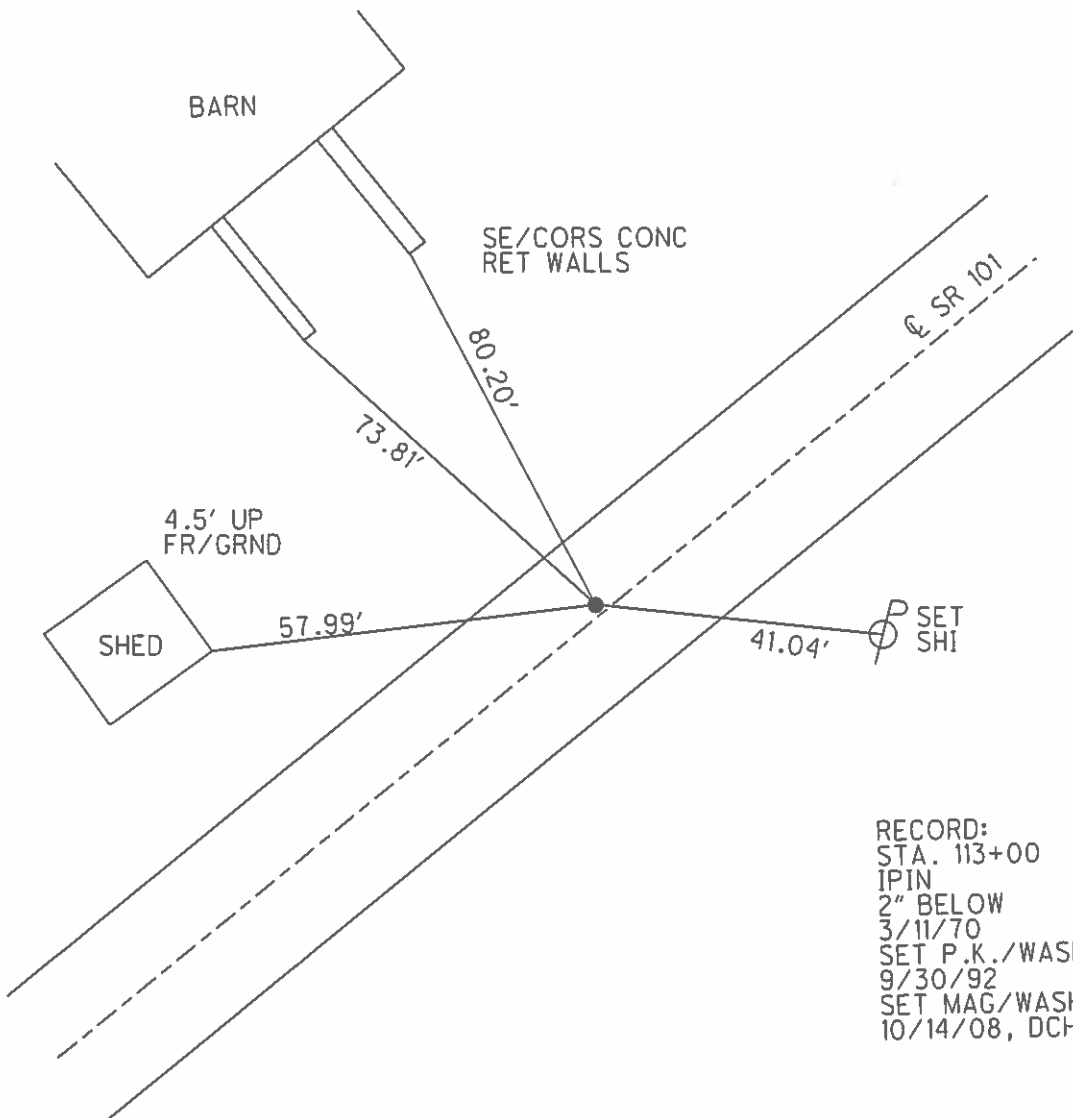
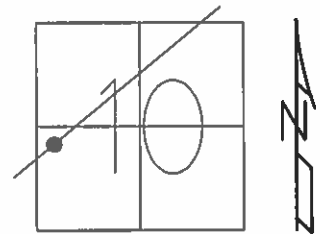


RECORD:  
 STA. 113+00  
 IPIN  
 2" BELOW  
 3-11-70  
 SET P.K./WASHER  
 9-30-92  
 FD P.K./WASHER  
 6/24/08, DCH  
 SET MAG/WASHER  
 10-14-08, DCH  
 FD MAG/WASHER  
 REF16  
 10-11-16, JFO  
 SET MAG/WASHER  
 10-9-18, JFO

O.D.O.T. DISTRICT 2 SURVEY OFFICE (USE ONLY)

PERSONNEL \_\_\_\_\_ REFERENCE NO. 16 SHEET 17 OF 27  
 NOTES HOMAN DATE 6-24-08 ROUTE SR 101  
 H.C. ROUSOS WEATHER CLOUDY COUNTY SENECA  
 R.C. HOMAN TEMP. 80° TOWNSHIP CLINTON  
 \_\_\_\_\_ SECTION 10  
 \_\_\_\_\_ T 2 N R 15 E

TYPE MONUMENT P.K./WASHER  
 ON SURFACE - ~~BELOW~~ ON  
 LEFT - ☉ PAV'T - ~~RIGHT~~ 1'  
9' TO LT EDGE PAVEMENT  
 S.L.M. 198+69  
 GRID: NORTHING: 538746.326 EASTING: 1795143.326



RECORD:  
 STA. 113+00  
 IPIN  
 2" BELOW  
 3/11/70  
 SET P.K./WASHER  
 9/30/92  
 SET MAG/WASHER  
 10/14/08, DCH

O.D.O.T. DISTRICT 2 SURVEY OFFICE

PERSONNEL \_\_\_\_\_

REFERENCE NO. 16

SHEET 17 OF 27

NOTES CHENEY

DATE 7/20/92

ROUTE SR 101

H.C. RIPPLE

WEATHER SUNNY

COUNTY SENECA

R.C. BARBOUR

TEMP. 60°

TOWNSHIP CLINTON

GEYMAN

SECTION 10

T 2 N R 15 E

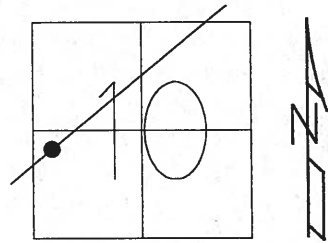
TYPE MONUMENT P.K./WASHER

ON SURFACE - ~~BELOW~~ ON

LEFT - C PAV'T - ~~RIGHT~~ 1'

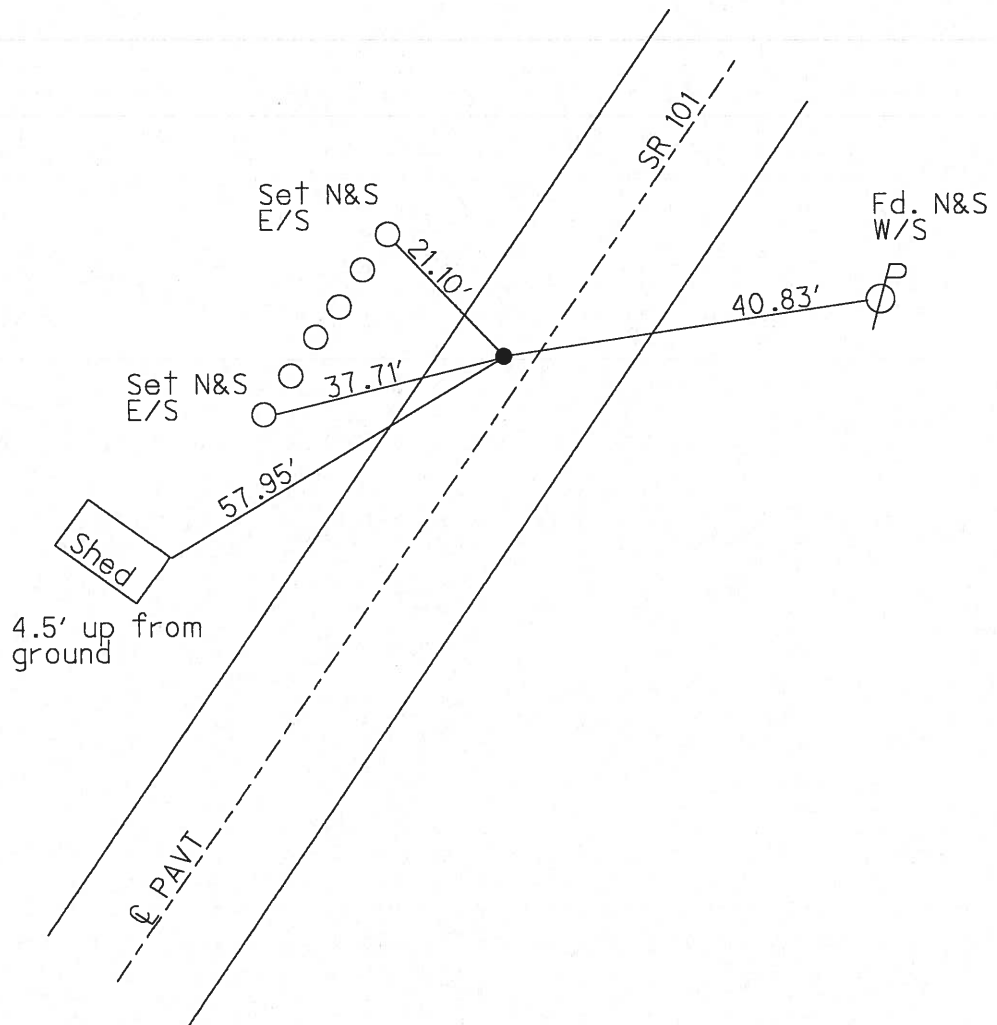
9' TO LT EDGE PAVEMENT

S.L.M. 198+69



Record: 3-11-70  
Iron Pin on C.L. 2" below surface  
STA. 113+00

SET P.K./WASHER  
9/30/92



O.D.O.T. DISTRICT 2 SURVEY OFFICE

PERSONNEL

REFERENCE NO. 16

SHEET 16 OF 26

NOTES Cheney

H.C. RIPPLE

DATE 7-20-92

ROUTE SR#101

R.C. BARBOUR

WEATHER SUNNY

COUNTY Seneca

Geyman

TEMP. 60°

TOWNSHIP CLINTON

SECTION 10

T2 N R 15 E

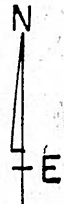
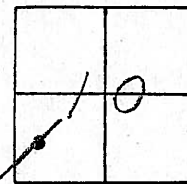
TYPE MONUMENT P.K./WASHER set P.K. & washer 9-30-92

ON SURFACE - BELOW yes

LEFT-℄ PAV'T. - RIGHT 1'

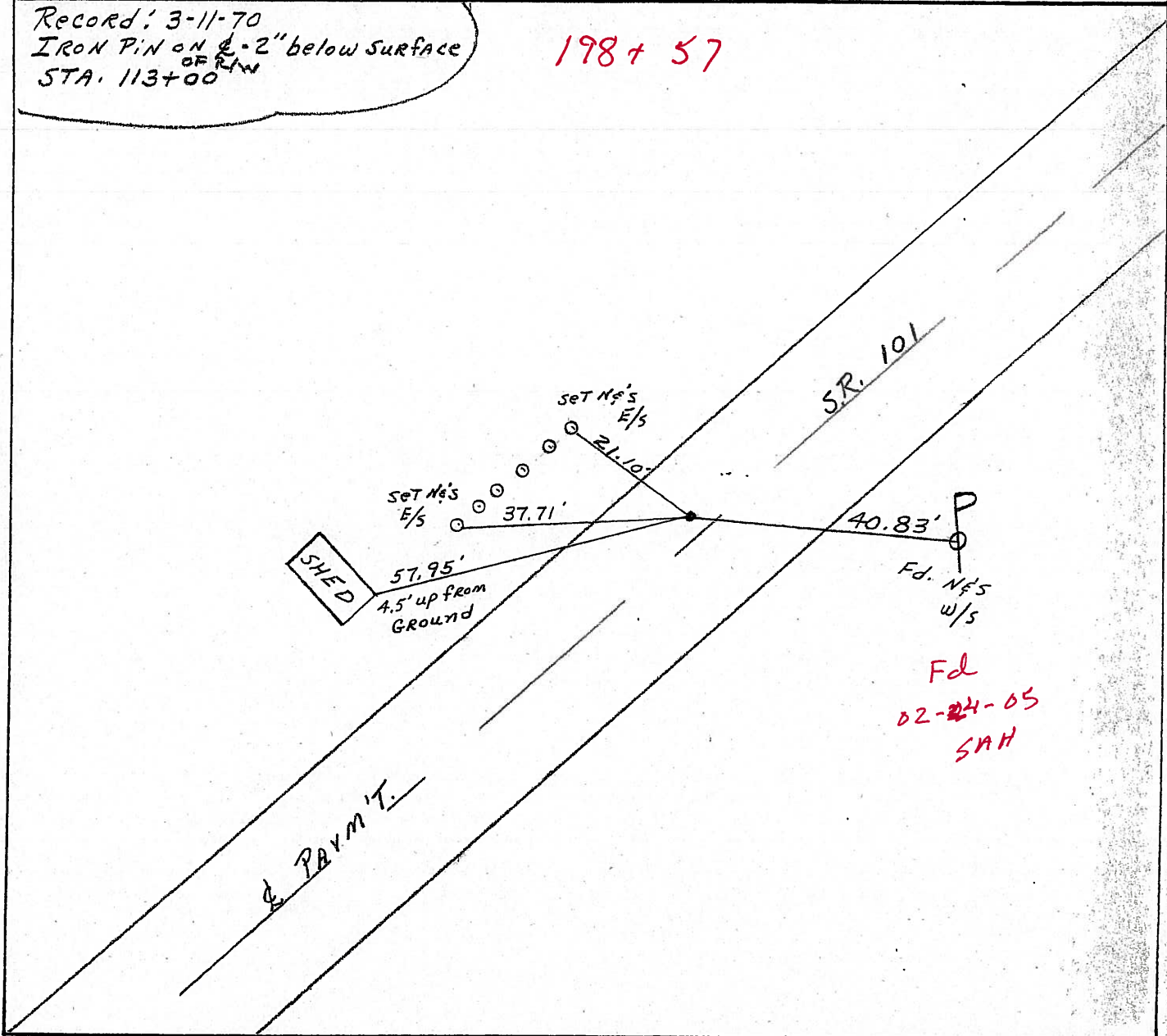
9' TO LT. EDGE PAVEMENT

S.L.M. 198+69



Record: 3-11-70  
 IRON PIN ON ℄ - 2" below surface  
 STA. 113+00 OF R/W

**198+57**



**Fd**  
**02-24-05**  
**SAH**

O.D.O.T. DISTRICT 2 SURVEY OFFICE

PERSONNEL

REFERENCE NO. 116

SHEET 17 OF 26

NOTES Cheney

H.C. RIPPLE

DATE 7-20-92

ROUTE SR#101

R.G. BARBOUR

WEATHER SUNNY

COUNTY Seneca

Geyman

TEMP. 60°

TOWNSHIP CLINTON

SECTION 10

T2 N R 15 E

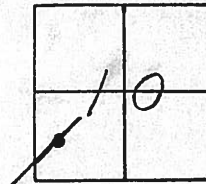
TYPE MONUMENT P.K./WASHER set P.K. & washer 9-30-92

ON SURFACE - ~~BELOW~~ yes

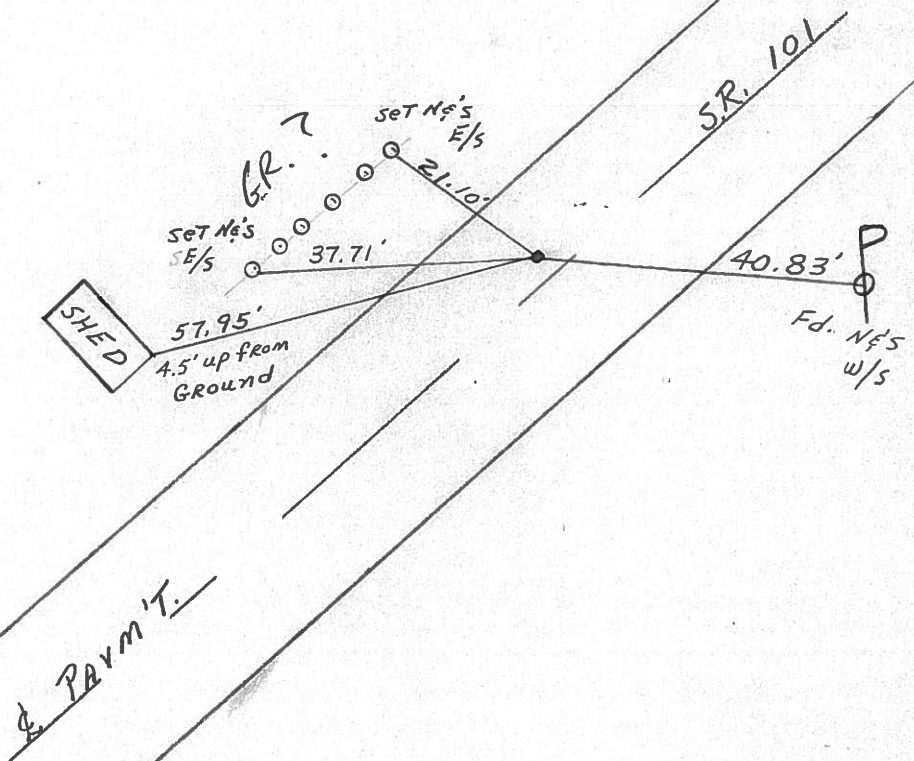
LEFT- & PAW'T. - ~~RIGHT~~ 1'

9' TO LT. EDGE PAVEMENT

S.L.M. 198+69



Record: 3-11-70  
 IRON PIN ON 2" below SURFACE  
 OF R/W  
 STA. 113+00



PERSONNEL TITLE PERSONNEL TITLE

COUNTY Seneca DATE 3/11/70

Ash  
Cronin  
Ripple  
Geyman

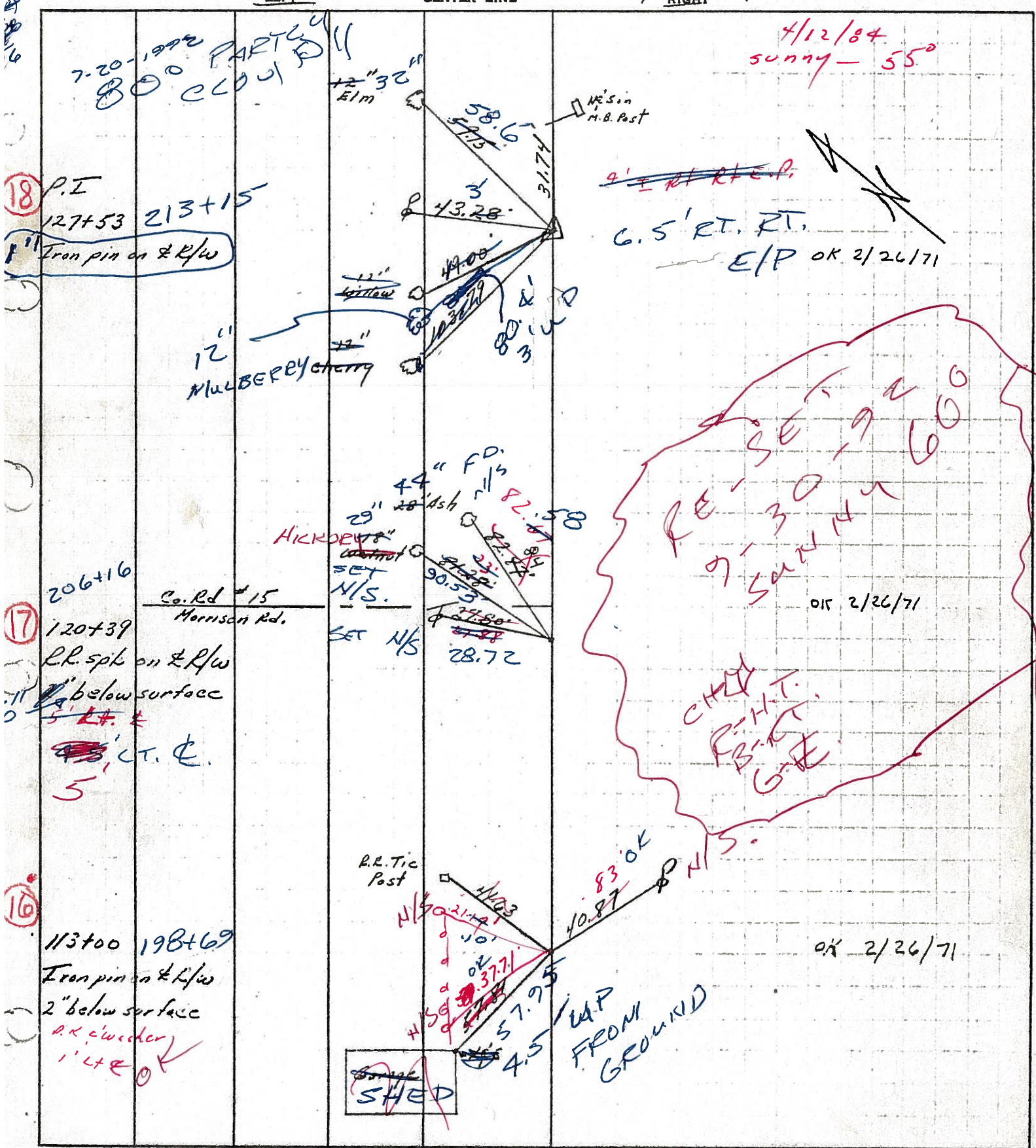
S. R. #101 (I.C.H. #271) WEATHER sunny

Anderson

SEC. I-K-O-S TEMP 50°

DESCRIPTION Tics for Control Points - Titlin Cor. To Sandusky Co Line JOB NO.

LEFT CENTER LINE RIGHT



18

17

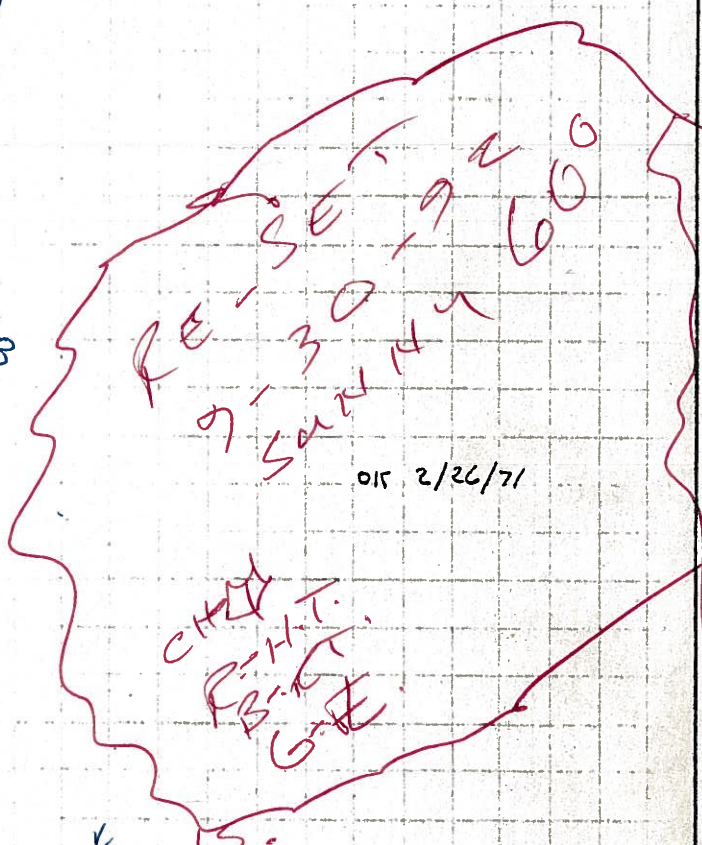
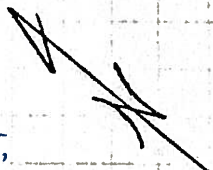
16

P.I. 127+53 213+15  
Iron pin on R/W

206+16  
120+39  
R.R. spike on R/W  
2" below surface  
5' RT. &  
4.5' CT. E.  
5'

113+00 198+69  
Iron pin on R/W  
2" below surface  
R.R. checker  
1' CT. E.

4/12/84 sunny - 55°



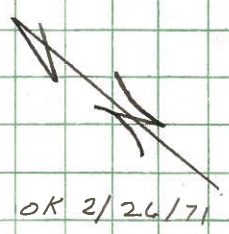
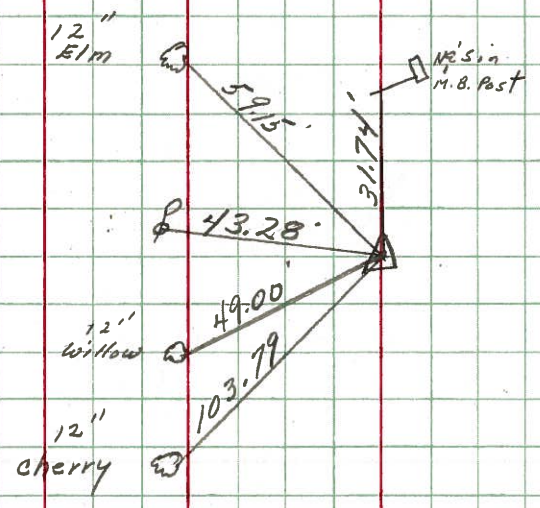
PERSONNEL TITLE PERSONNEL TITLE

Ash COUNTY Seneca DATE 3/11/70  
Cronin  
Ripple S. R. #101 (I.C.H. #271) WEATHER sunny  
Geyman Anderson SEC. I-K-O-S TEMP. 30°

DESCRIPTION Ties for Control Points - Tiffin Corp. to Sandusky Co. Line JOB NO.  
LEFT CENTER LINE RIGHT

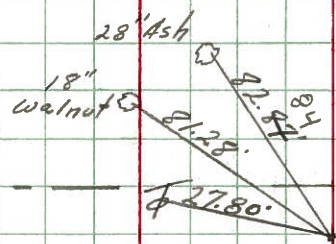
18

P.I.  
127+53  
Iron pin on & R/w



17

Co. Rd. #15  
Morrison Rd.  
120+39  
R.R. spike on & R/w  
2" below surface

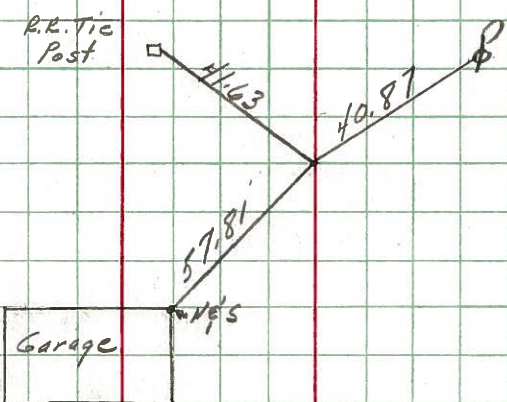


(see Page 5 1/2)

OK 2/26/71

16

113+00  
Iron pin on & R/w  
2" below surface



OK 2/26/71

PERSONNEL TITLE PERSONNEL TITLE

Krabill  
Kowalaski  
Geyman

COUNTY Seneca DATE 2-4-64

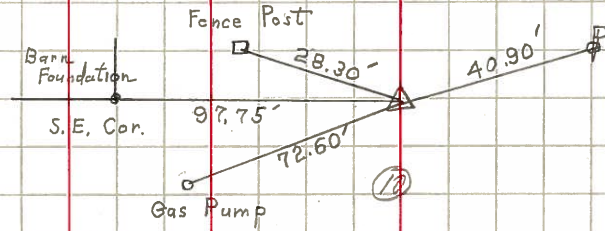
S. R. # 101 WEATHER

SEC. TEMP.

DESCRIPTION LEFT CENTER LINE RIGHT JOB NO.

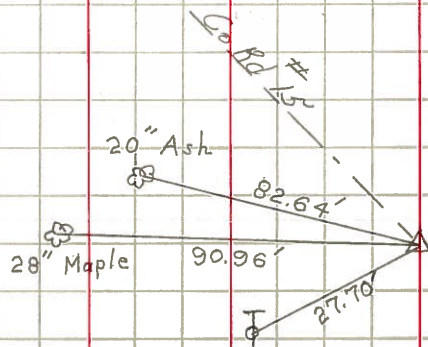
16

STA. 113+00  
Iron Pin # 369



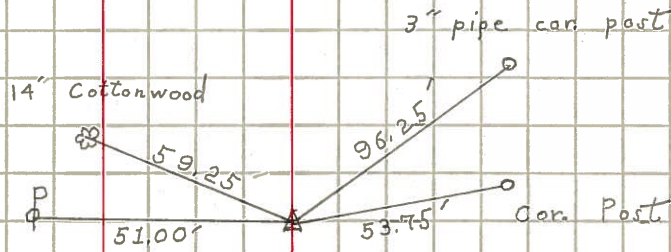
17

STA. 120+39  
Iron Pin # 370



18

STA. 127+53  
Iron Pin # 371



19

STA. 144+34  
Iron Pin # 372

