

O.D.O.T. DISTRICT 2 SURVEY OFFICE (USE ONLY)

PERSONNEL

REFERENCE NO. 17

SHEET 18 OF 27

NOTES RHOADES

DATE 3/23/18

ROUTE SR 101

H.C. O'DONNELL

WEATHER SUNNY

COUNTY SENECA

R.C. SEAMAN

TEMP. 30°

TOWNSHIP CLINTON

SECTION 10

DWG BY MILLER

PID 102817

T 2 N R 15 E

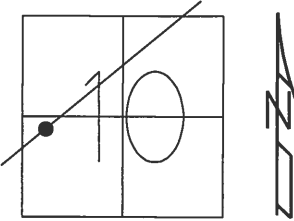
TYPE MONUMENT MAG/WASHER

ON SURFACE - ~~BELOW~~ ON

OFFSET 5' LT : ~~RT~~

5.1' TO LT EDGE PAVEMENT

STATION: 206+12.65



HORIZ.DATUM: NAD83 2011

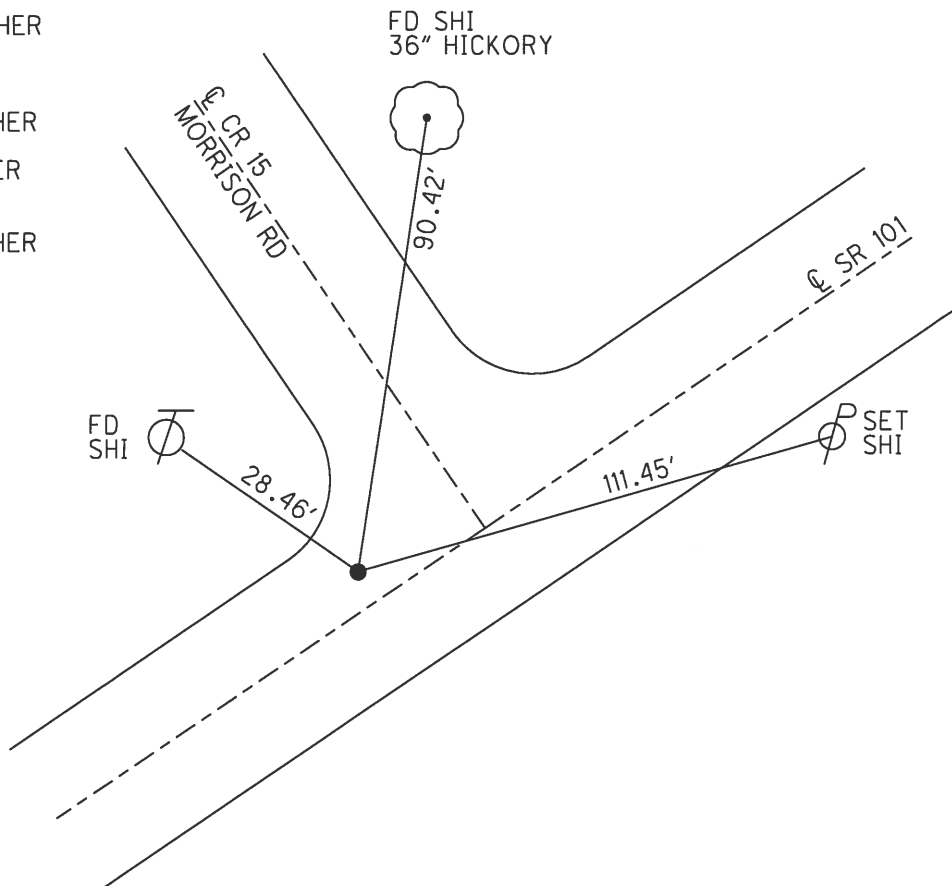
GEOID: 2012A NAVD88

GRID: NORTHING: 539235.396

EASTING: 1795708.864

RECORD:

- STA. 120+39
- R.R. SPIKE ON  $\phi$  R/W
- 2" BELOW
- 3-11-70
- SET P.K./WASHER
- 9-30-92
- FD P.K.NAIL
- 6/24/08, DCH
- SET MAG/WASHER
- 10-14-08, DCH
- FD MAG/WASHER
- REF17
- 10-11-16, JFO
- SET MAG/WASHER
- 10-9-18, JFO

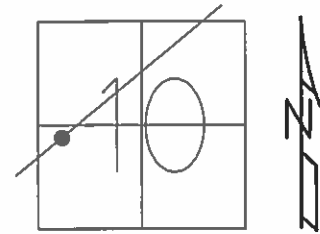


O.D.O.T. DISTRICT 2 SURVEY OFFICE (USE ONLY)

PERSONNEL \_\_\_\_\_ REFERENCE NO. 17 SHEET 18 OF 27

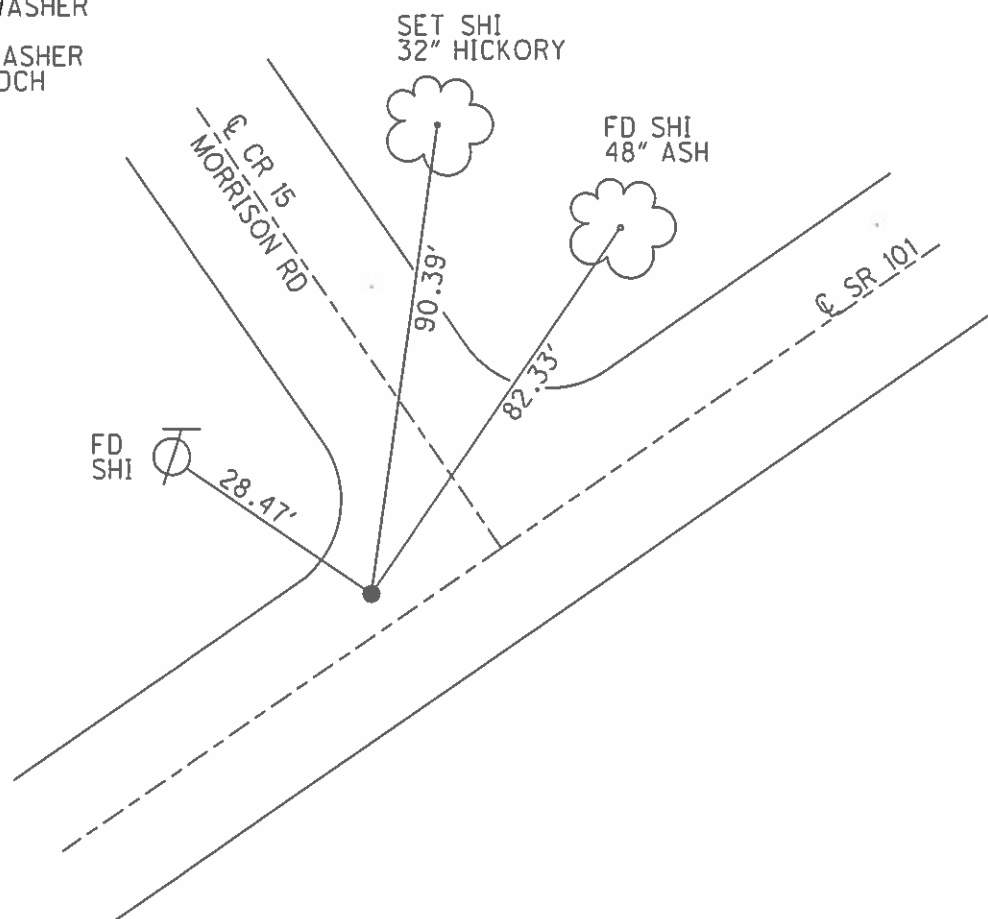
NOTES \_\_\_\_\_ DATE 6-24-08 ROUTE SR 101  
 H.C. ROUSOS WEATHER CLOUDY COUNTY SENECA  
 R.C. HOMAN TEMP. 80° TOWNSHIP CLINTON  
 \_\_\_\_\_ SECTION 10  
 \_\_\_\_\_ T 2 N R 15 E

TYPE MONUMENT P.K.NAIL  
 ON SURFACE - ~~BELOW~~ ON \_\_\_\_\_  
 LEFT - ☉ PAV'T - ~~RIGHT~~ 5'  
5.1' TO LT EDGE PAVEMENT  
 S.L.M. 206+16



GRID: NORTHING: 539235.465 EASTING: 1795708.757

RECORD:  
 STA. 120+39  
 R.R. SPIKE ON ☉ R/W  
 2" BELOW  
 3/11/70  
 SET P.K./WASHER  
 9/30/92  
 SET MAG/WASHER  
 10/14/08, DCH



O.D.O.T. DISTRICT 2 SURVEY OFFICE

PERSONNEL

REFERENCE NO. 17

SHEET 17 OF 26

NOTES Cheney

H.C. RIPPLE

R.C. BARBOUR

Geyman

DATE 7-20-92

WEATHER SUNNY

TEMP. 60°

ROUTE SR#101

COUNTY SENECA

TOWNSHIP CLINTON

SECTION 10

T 2 N R 15 E

TYPE MONUMENT R.R. SPK.

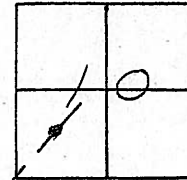
SET P.K.F. WASHER  
9-30-92

~~ON SURFACE~~ - BELOW 6"

LEFT - & PAV'T. - RIGHT 5'

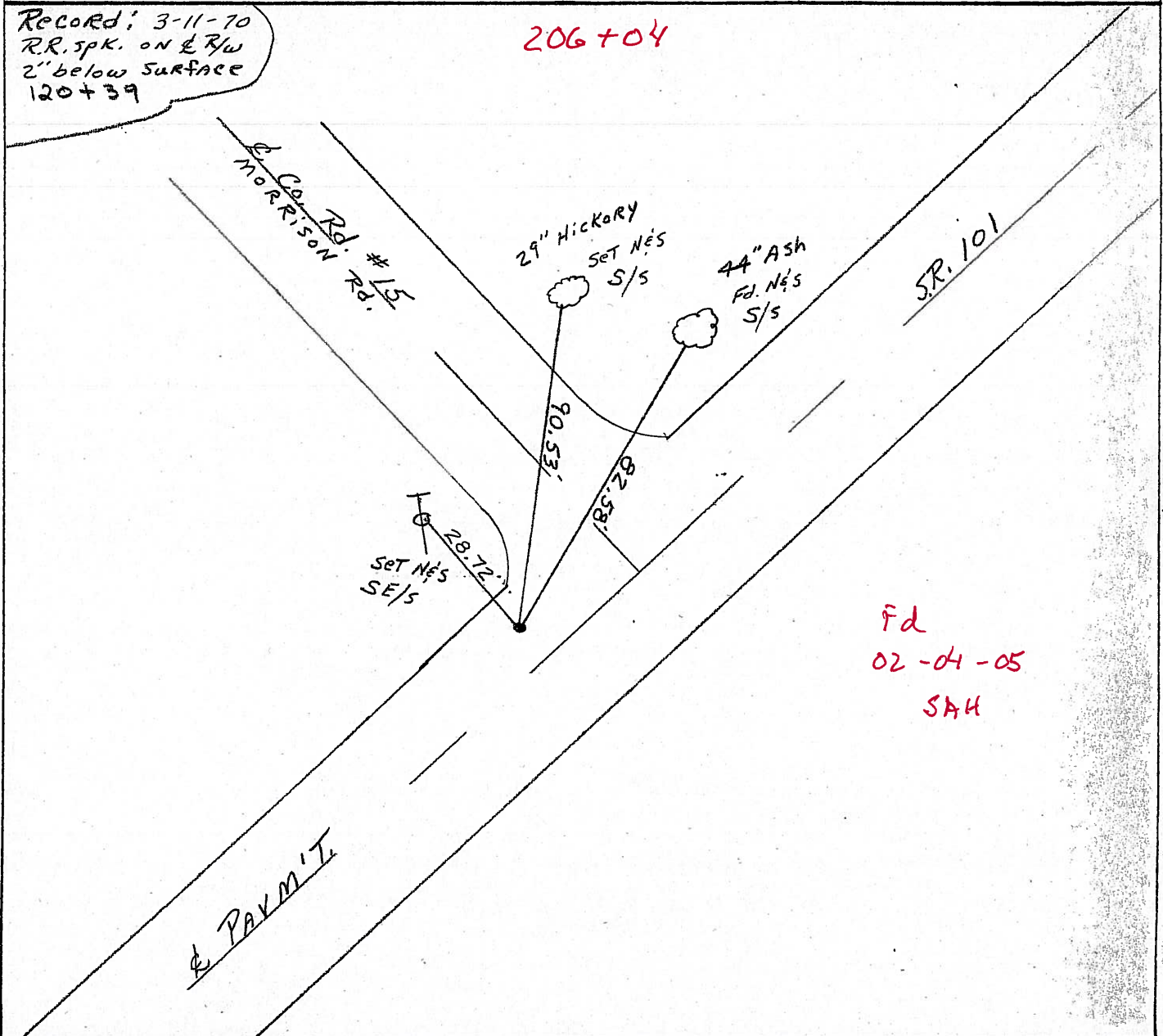
5.1 TO LT. EDGE PAVEMENT

S.L.M. 206+16



Record: 3-11-70  
RR. SPK. ON & RW  
2" below surface  
120+39

206+04



Fd  
02-04-05  
SAH

O.D.O.T. DISTRICT 2 SURVEY OFFICE

PERSONNEL

REFERENCE NO. 17

SHEET 18 OF 26

NOTES Cheney

H.C. RIPPLE

R.C. BARBOUR

Geyman

DATE 7-20-92

WEATHER SUNNY

TEMP. 60°

ROUTE SR#101

COUNTY SENECA

TOWNSHIP CLINTON

SECTION 10

T2 N R 15 E

TYPE MONUMENT R.R. SPK.

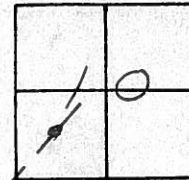
SET P.K. F. WASHER  
9-30-92

~~ON SURFACE~~ BELOW 6"

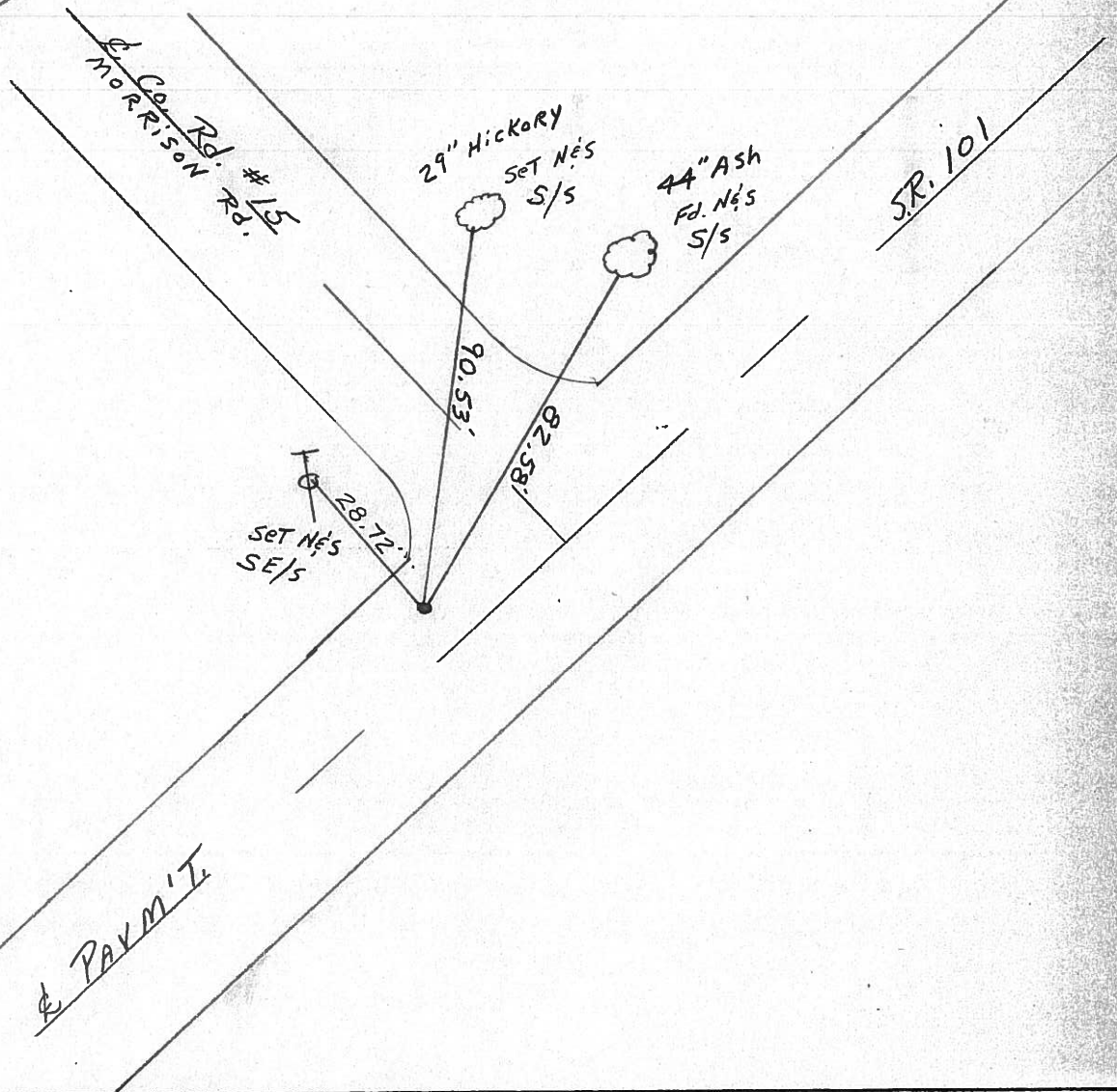
LEFT- & PAV'T. - RIGHT 5'

5.1 TO LT. EDGE PAVEMENT

S.L.M. 206+16



Record: 3-11-70  
R.R. spk. on & R/W  
2' below surface  
120+39



PERSONNEL TITLE PERSONNEL TITLE

COUNTY Seneca

DATE 3/11/70

Ash

Cronin

Ripple

Geyman

S. R. #101 (I.C.H. #271)

WEATHER sunny

Anderson

SEC. I-K-O-S

TEMP 50°

DESCRIPTION Tics for Control Points - Tiffin Corp. to Sandusky Co. Line

JOB NO.

LEFT

CENTER LINE

RIGHT

7.20-1992 PARTIAL  
CLOUD

4/12/84  
sunny - 55°

18 P.I.  
127+53 213+15  
Iron pin on E/W

12" MULBERRY CHERRY

4' RT RT E.P.  
6.5' RT. RT.  
E/P OK 2/26/71

17 206+16  
120+39  
Co. Rd #15  
Harrison Rd.  
R.R. spike on E/W  
below surface  
5' RT. E.  
5' RT. E.

44" F.D.  
29" Ash  
HICKORY  
control  
SET N/S.  
90.53  
27.88  
28.72

RE-SET 9' 60"  
9' 30"  
CHERRY  
P.I.T.  
P.B.P.  
G.P.E.

16 113+00 198+69  
Iron pin on E/W  
2" below surface  
R.K. (wooden)  
1' RT. E.

R.R. Tic Post  
4.03  
4.59  
4.5  
4.5  
40.87 OK  
WAP FROM GROUND

SHED

OK 2/26/71

OK 2/26/71

PERSONNEL TITLE PERSONNEL TITLE

Ash

COUNTY Seneca

DATE 3/11/70

Crenin

S. R. #101 (I.C.H. #271)

WEATHER sunny

Ripple

SEC. I-K-O-J

TEMP. 30°

Geyman

Anderson

DESCRIPTION Ties for Control Points - Tiffin Corp. to Sandusky Co. Line

JOB NO.

LEFT

CENTER LINE

RIGHT

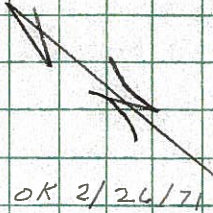
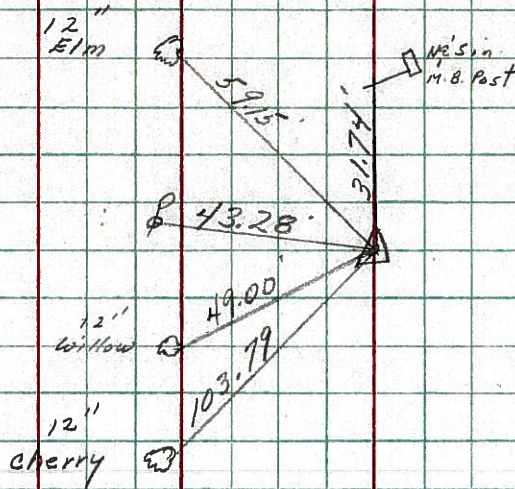
~~20~~

18

P.I.

127+53

Iron pin on R/W



OK 2/26/71

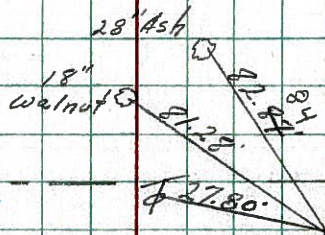
~~21~~

17

120+39

R.R. spike on R/W  
2" below surface

Co. Rd #15  
Morrison Rd.



(see Page 5 1/2)

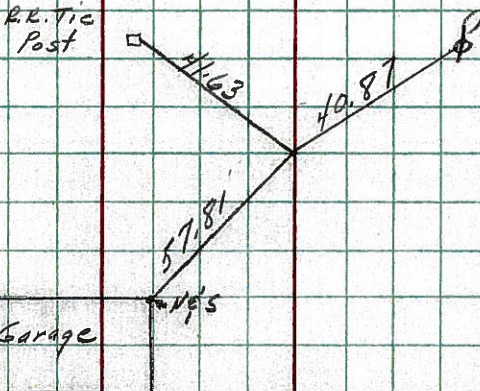
OK 2/26/71

~~22~~

16

113+00

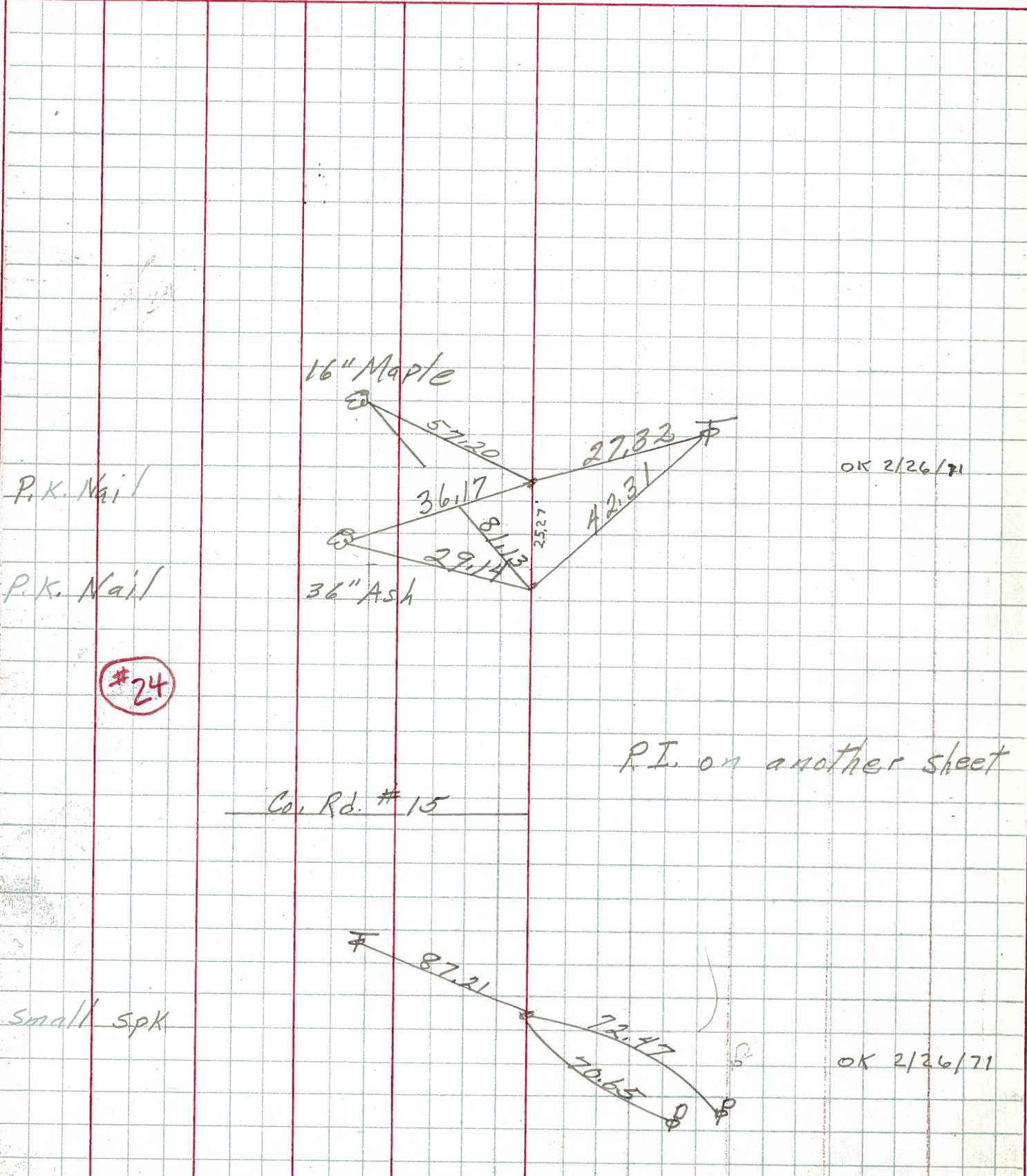
Iron pin on R/W  
2" below surface



OK 2/26/71

PERSONNEL	TITLE	PERSONNEL	TITLE	COUNTY	DATE	WEATHER	TEMP.
Schnöder				Seneca	4-30-70	cloudy	70°
Mosser				S. R. 101			
Barbour				SEC.			
Potts							

DESCRIPTION Ties for control Points JOB NO. \_\_\_\_\_



OK 2/26/71

#24

P.I. on another sheet

Col. Rd. # 15

OK 2/26/71

PERSONNEL TITLE PERSONNEL TITLE

COUNTY Scheneca

DATE 2-4-64

Krabill

Kowalski

Geyman

S. R. # 101

WEATHER

SEC.

TEMP.

DESCRIPTION

LEFT

CENTER LINE

RIGHT

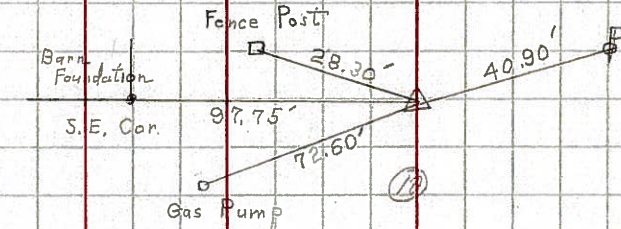
JOB NO.

16

STA. 113+00

Iron Pin

# 369

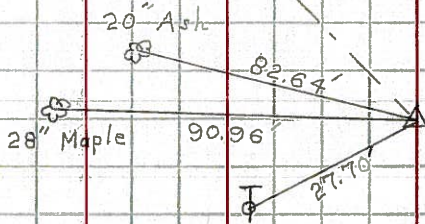


17

STA. 120+39

Iron Pin

# 370

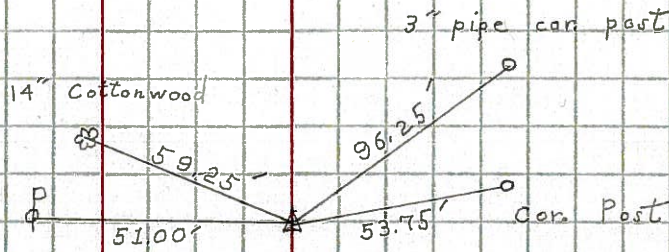


18

STA. 127+53

Iron Pin

# 371



19

STA. 144+34

Iron Pin

# 372

