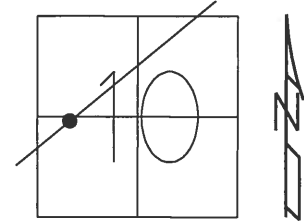


O.D.O.T. DISTRICT 2 SURVEY OFFICE (USE ONLY)

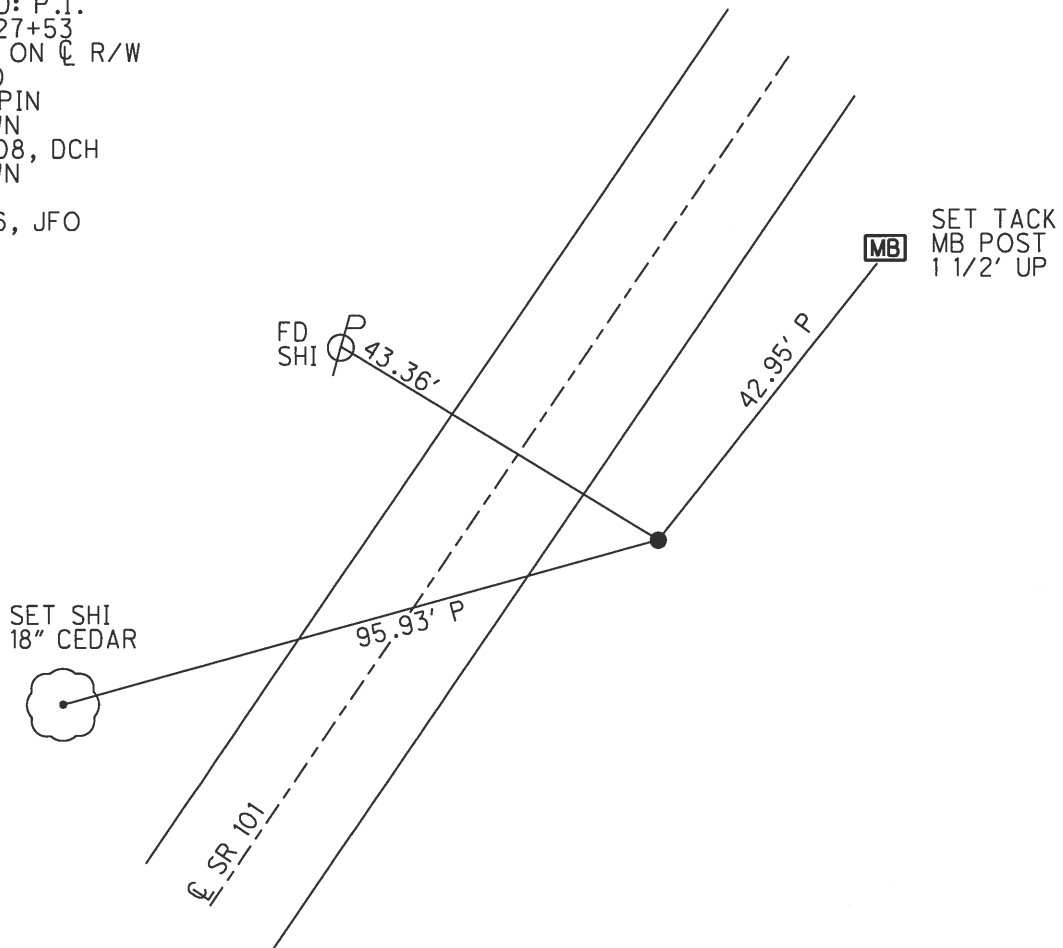
PERSONNEL _____ REFERENCE NO. 18 SHEET 19 OF 27
 NOTES RHOADES DATE 3/23/18 ROUTE SR 101
 H.C. O'DONNELL WEATHER SUNNY COUNTY SENECA
 R.C. RHOADES TEMP. 30° TOWNSHIP CLINTON
 DWG BY MILLER PID 102817 SECTION 10
 T 2 N R 15 E

TYPE MONUMENT 1" IPIN
~~ON SURFACE~~ - BELOW 6"
 OFFSET 6.5' TO RT EDGE PAVEMENT
 STATION: 213+14.40



HORZ. DATUM: NAD83 2011 GEOID: 2012A NAVD88
 GRID: NORTHING: 539584.263 EASTING: 1796318.298

RECORD: P.I.
 STA. 127+53
 1" IPIN ON CL R/W
 3-11-70
 FD 1" IPIN
 6" DOWN
 6/24/08, DCH
 4" DOWN
 REF18
 10-11-16, JFO



O.D.O.T. DISTRICT 2 SURVEY OFFICE (USE ONLY)

PERSONNEL _____ REFERENCE NO. 18 SHEET 19 OF 27

NOTES HOMAN DATE 6-24-08 ROUTE SR 101
 H.C. ROUSOS WEATHER CLOUDY COUNTY SENECA
 R.C. HOMAN TEMP. 80° TOWNSHIP CLINTON
 _____ SECTION 10
 _____ T 2 N R 15 E

TYPE MONUMENT 1" IPIN

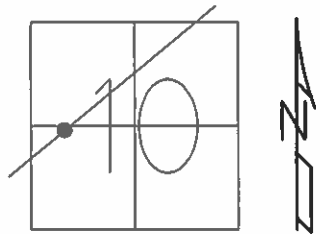
ON SURFACE - ~~BELOW~~ ON

~~LEFT~~ - Q PAV'T - RIGHT 16.5'

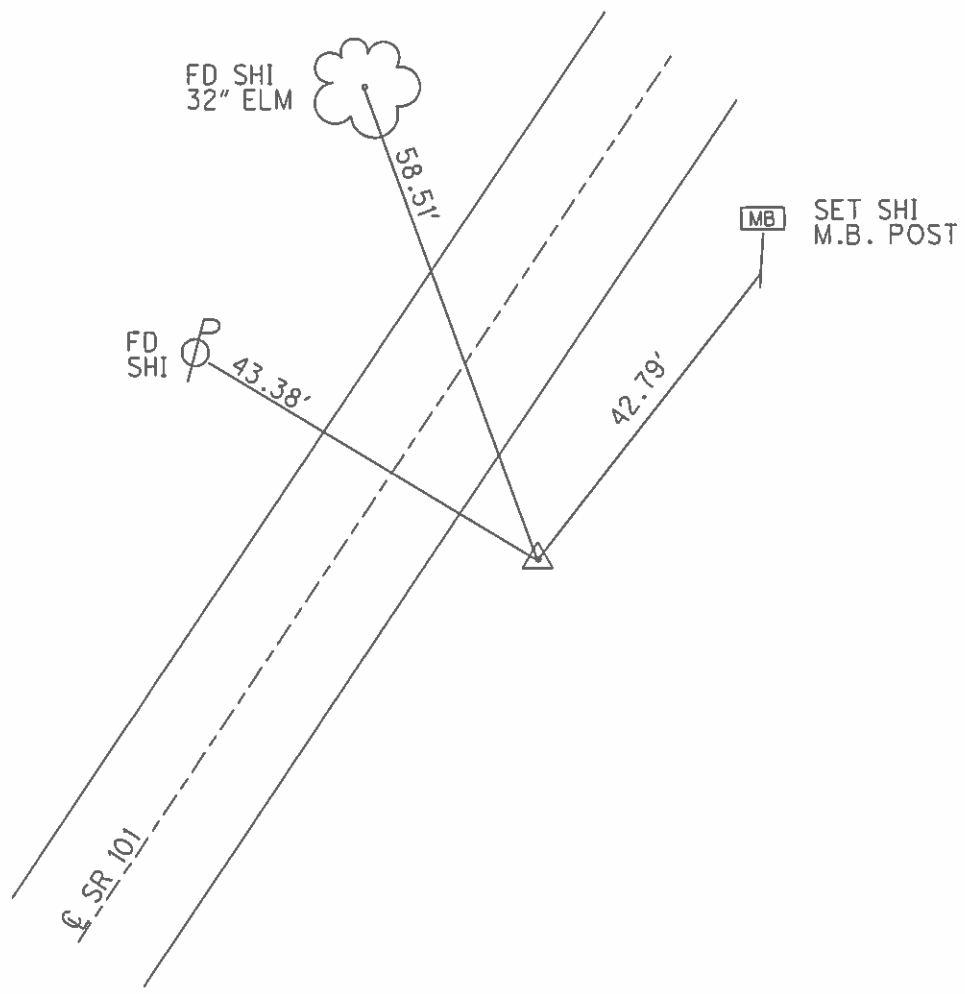
6.5' TO RT EDGE PAVEMENT

S.L.M. 213+15

GRID: NORTHING: 539584.296 EASTING: 1796318.246



RECORD: P.I.
 STA. 127+53
 1" IPIN ON Q R/W
 3/11/70



O.D.O.T. DISTRICT 2 SURVEY OFFICE

PERSONNEL

REFERENCE NO. 18

SHEET 19 OF 27

NOTES CHENEY

DATE 7/20/92

ROUTE SR 101

H.C. RIPPLE

WEATHER SUNNY

COUNTY SENECA

R.C. BARBOUR

TEMP. 60°

TOWNSHIP CLINTON

GEYMAN

SECTION 10

T 2 N R 15 E

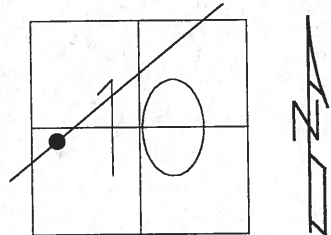
TYPE MONUMENT 1" IRON PIN (P.I.)

ON SURFACE - ~~BELOW~~ ON

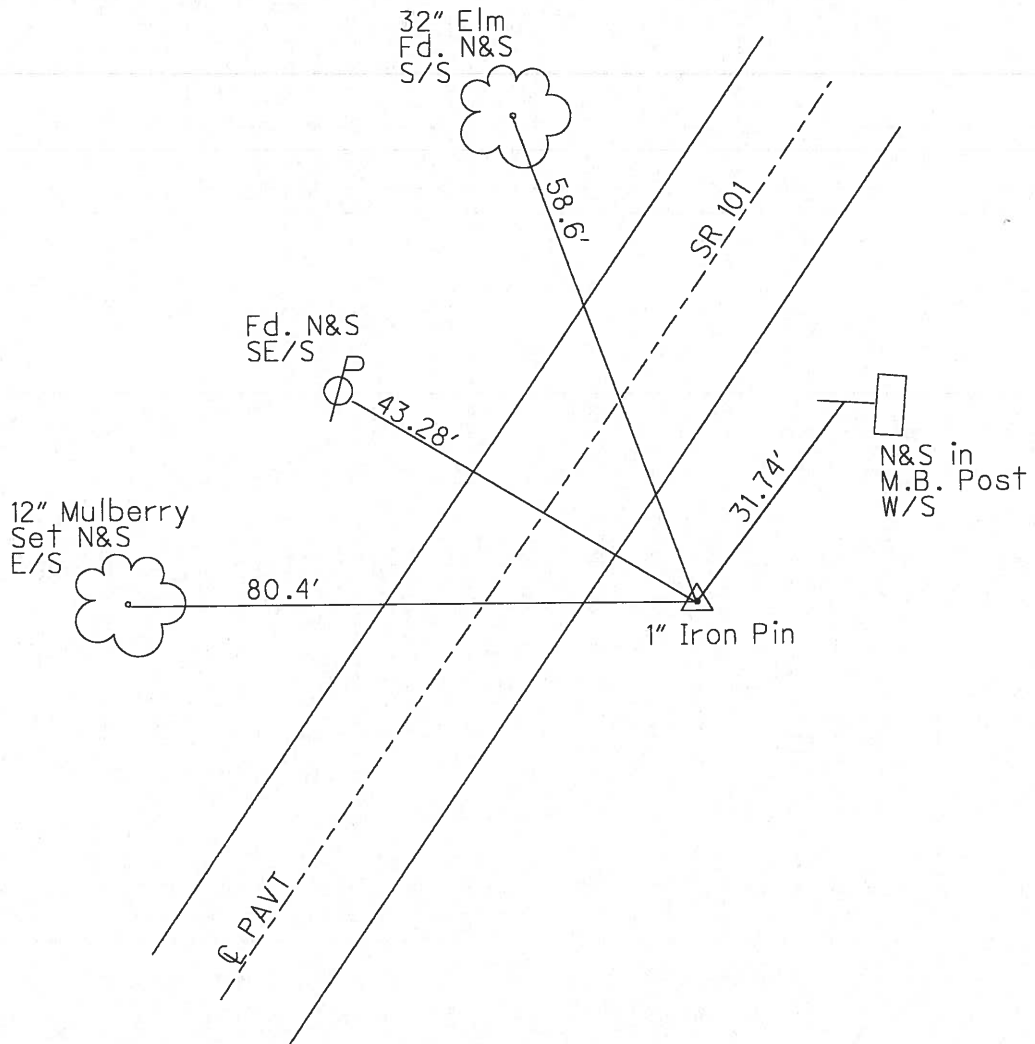
~~LEFT~~ - C PAV'T - RIGHT 16.5'

6.5' TO RT EDGE PAVEMENT

S.L.M. 213+15



Record: P.I. 3-11-70
1" Iron Pin on C.L. R/W
STA 127+53



O.D.O.T. DISTRICT 2 SURVEY OFFICE

PERSONNEL

REFERENCE NO. 18

SHEET 18 OF 26

NOTES Cheney

H.C. Ripple

R.C. BARBOUR

GEYMAN

DATE 7-20-92

WEATHER SUNNY

TEMP. 60°

ROUTE SR#101

COUNTY Seneca

TOWNSHIP CLINTON

SECTION 10

T2 NR 15 E

TYPE MONUMENT P.I., 1" IRON PIN

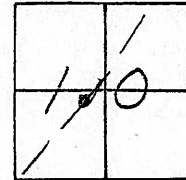
ON SURFACE - ~~BELOW~~ yes

~~LEFT - & PAV'T.~~ - RIGHT 16.5'

6.5' TO RT. EDGE PAVEMENT

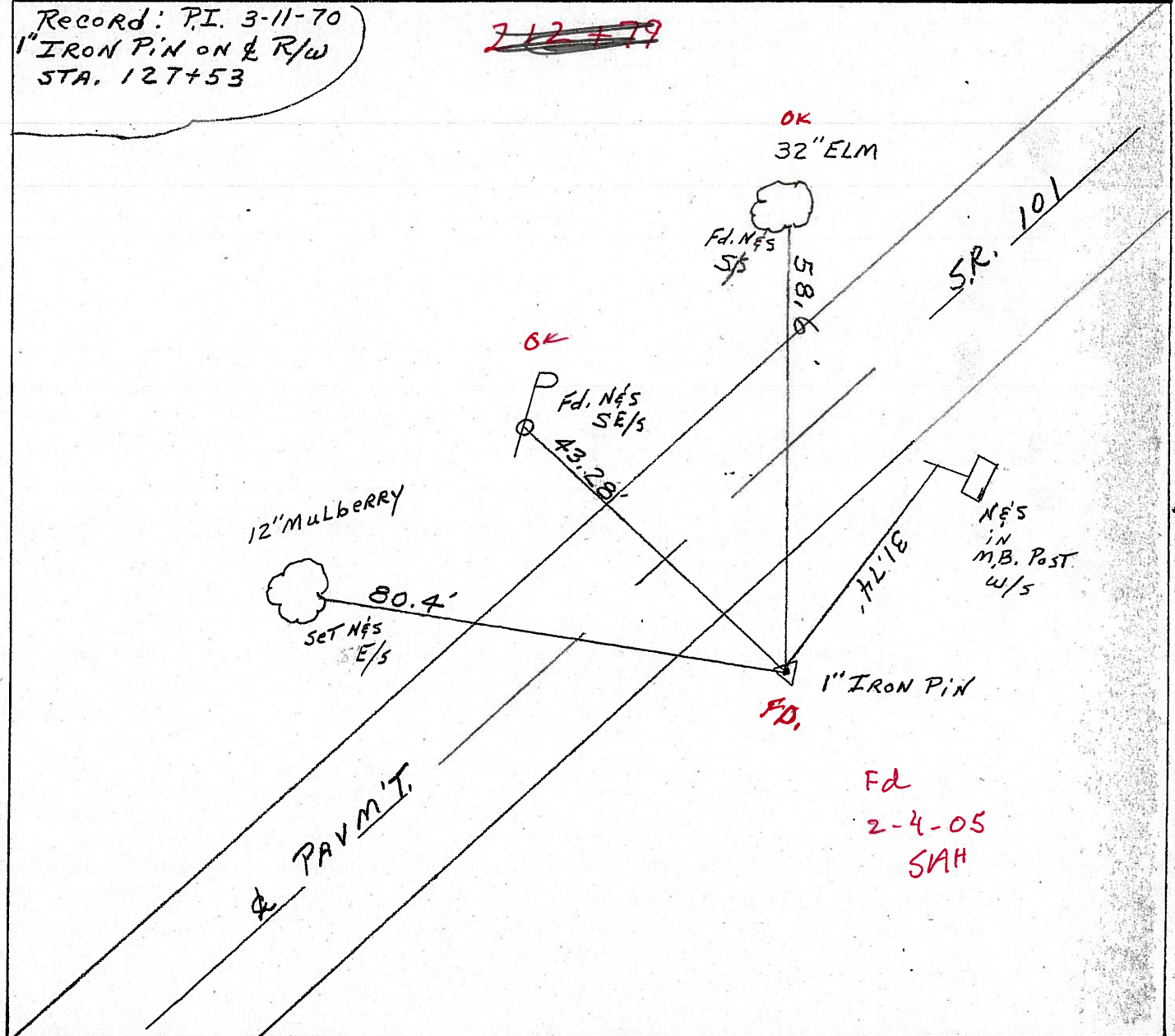
S.L.M. 213+15

213+05



Record: P.I. 3-11-70
1" IRON PIN ON & R/W
STA. 127+53

~~212+79~~



Fd
2-4-05
SAH

O.D.O.T. DISTRICT 2 SURVEY OFFICE

PERSONNEL

REFERENCE NO. 18

SHEET 18 OF 26

NOTES Cheney

H.C. RIPPLE

DATE 7-20-92

ROUTE SR#101

R.C. BARBOUR

WEATHER SUNNY

COUNTY SENECA

GEYMAN

TEMP. 60°

TOWNSHIP CLINTON

SECTION 10

T2 NR 15 E

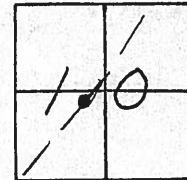
TYPE MONUMENT P.I. 1" IRON PIN

ON SURFACE - BELOW yes

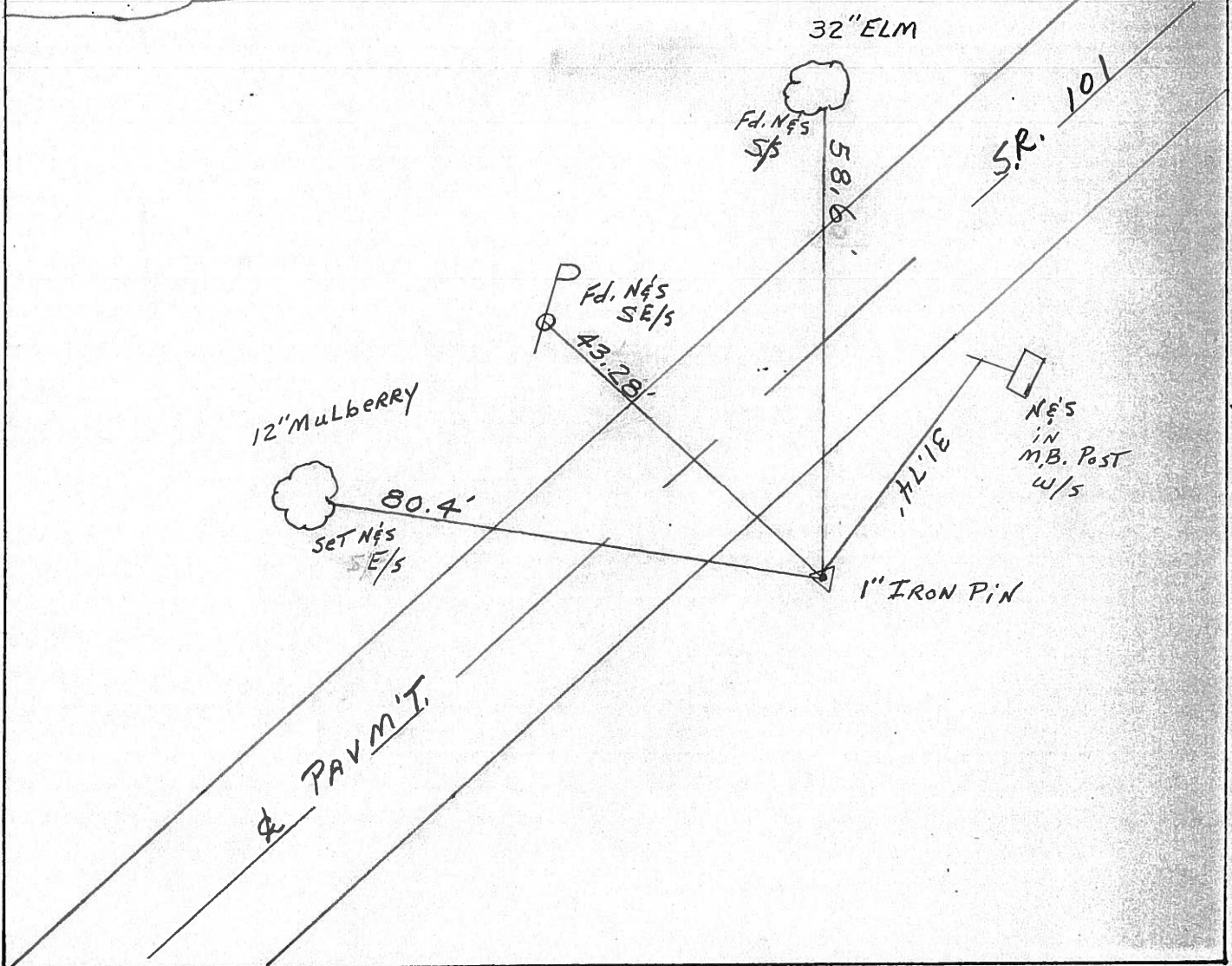
~~LEFT~~ - PAV'T. - RIGHT 16.5'

6.5' TO RT. EDGE PAVEMENT

S.L.M. 213+15



Record: P.I. 3-11-70
1" IRON PIN ON ℄ R/W
STA. 127+53



PERSONNEL TITLE PERSONNEL TITLE

COUNTY Seneca

DATE 3/11/70

S. R. #101 (I.C.H. #271)

WEATHER sunny

SEC. I-K-O-S

TEMP 50°

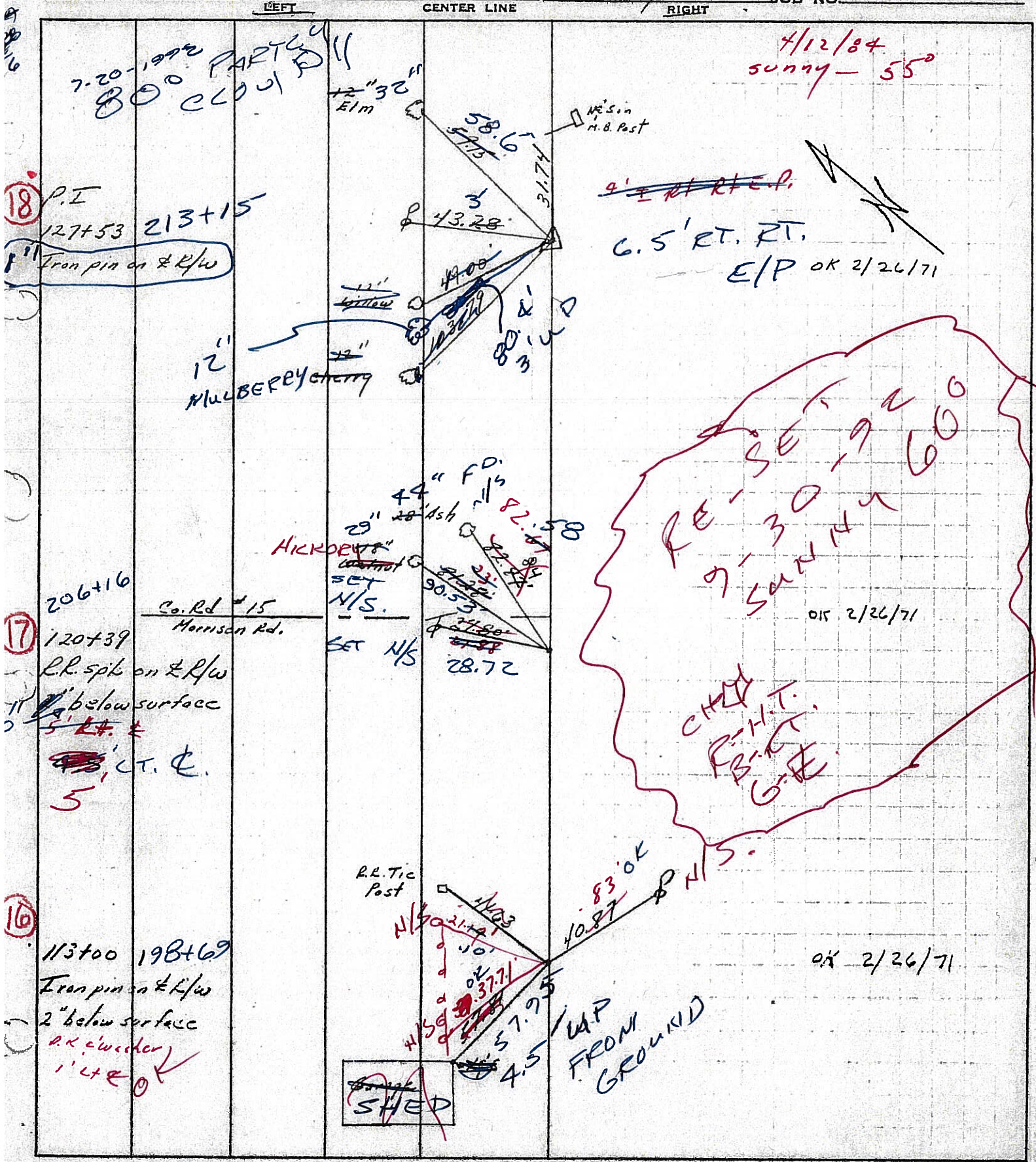
DESCRIPTION Ties for Control Points - Tiffin Cor. to Sandusky Co. Line

JOB NO.

LEFT

CENTER LINE

RIGHT



7.20-1970 PARTIAL
 80° CLOSURE

18 P.I.
 127+53 213+15
 1" Iron pin on & R/W

12" MULBERRY CHERRY

17 206+16
 120+39
 R.R. spike on & R/W
 11" below surface
 5' RT. &
 4.5' CT. &
 5

Co. Rd #15
 Harrison Rd.

16 113+00 198+69
 Iron pins on & R/W
 2" below surface
 a.k.a. wooden
 1" CT. & OK

SHED

4/12/84
 sunny - 55°

4' RT. RT. P.
 6.5' RT. RT.
 E/P OK 2/26/71

RE-SET
 7-30-71
 9-26-71
 OK 2/26/71

CHD
 P.H.T.
 F.B.T.
 G.E.

83' OK
 40.87
 4.5
 WAP FROM GROUND
 OK 2/26/71

PERSONNEL TITLE PERSONNEL TITLE

COUNTY Seneca

DATE 3/11/70

Ash
Crenin
Ripple
Geyman

Anderson

S. R. #101 (I.C.H. #271)

WEATHER sunny

SEC. I-K-O-J

TEMP. 30°

DESCRIPTION Ties for Control Points - Tiffin Corp. to Sandosky Co. Line

JOB NO.

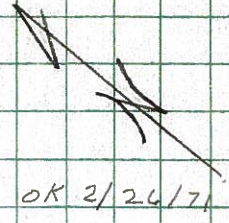
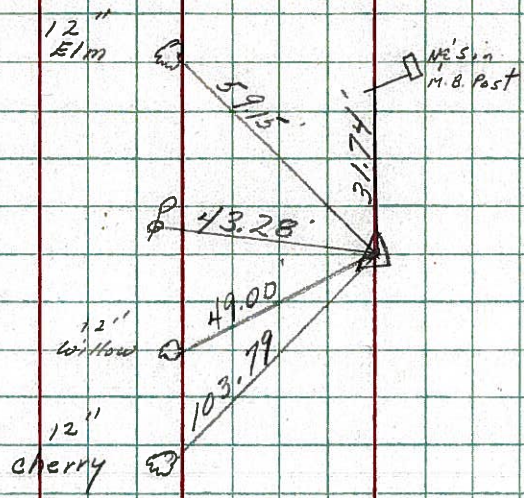
LEFT

CENTER LINE

RIGHT

18

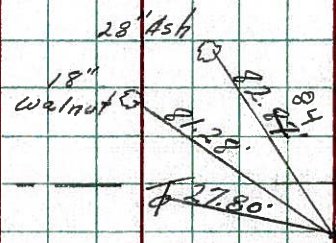
P.I.
127+53
Iron pin on E/R/w



OK 2/26/71

17

Co. Rd #15
Morrison Rd.
120+39
R.R. spike on E/R/w
2" below surface

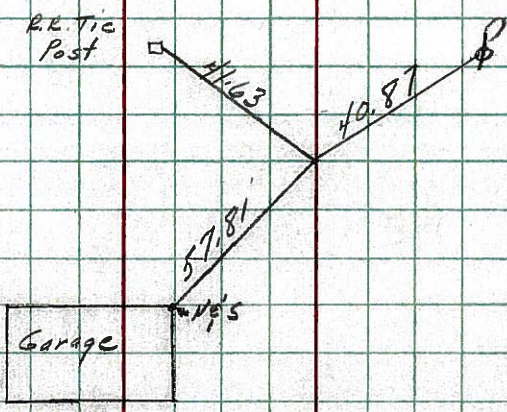


(see Page 5 1/2)

OK 2/26/71

16

113+00
Iron pin on E/R/w
2" below surface



OK 2/26/71

PERSONNEL TITLE PERSONNEL TITLE
 Krabill _____
 Kowalski _____
 Geyman _____

COUNTY Seneca DATE 2-4-64

S. R. # 101

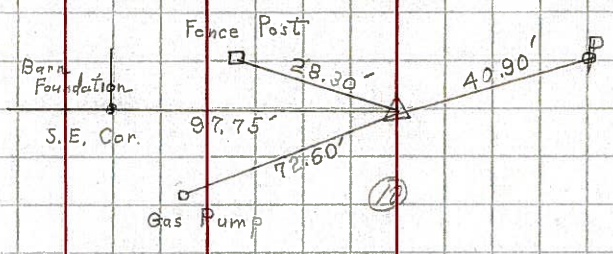
WEATHER _____

SEC. _____ TEMP. _____

DESCRIPTION LEFT CENTER LINE RIGHT JOB NO.

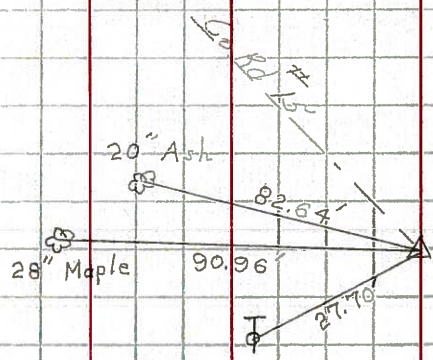
16

STA. 113+00
 Iron Pin # 369



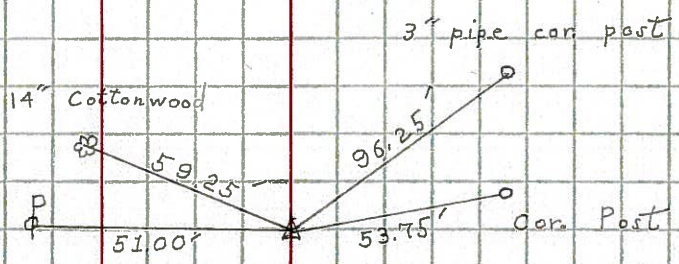
17

STA. 120+39
 Iron Pin # 370



18

STA. 127+53
 Iron Pin # 371



19

STA. 144+34
 Iron Pin # 372

