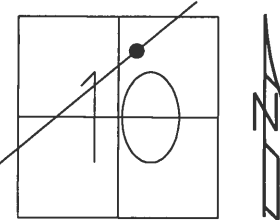


O.D.O.T. DISTRICT 2 SURVEY OFFICE (USE ONLY)

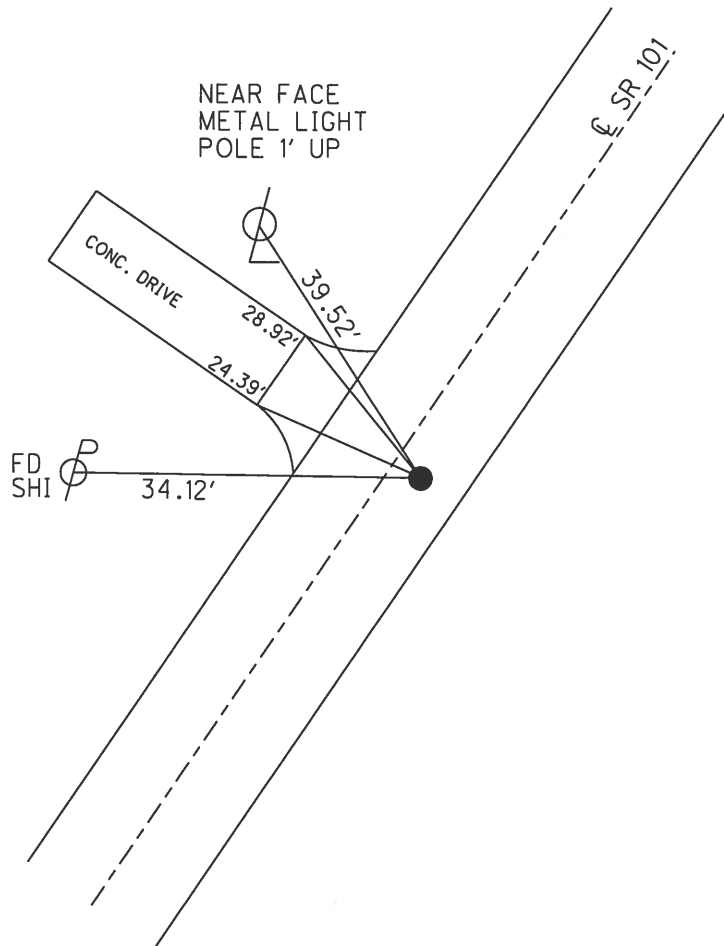
PERSONNEL	REFERENCE NO. <u>19</u>	SHEET <u>20</u> OF <u>27</u>
NOTES <u>RHOADES</u>	DATE <u>3/23/18</u>	ROUTE <u>SR 101</u>
H.C. <u>O'DONNELL</u>	WEATHER <u>SUNNY</u>	COUNTY <u>SENECA</u>
R.C. <u>SEAMAN</u>	TEMP. <u>30°</u>	TOWNSHIP <u>CLINTON</u>
DWG BY <u>MILLER</u>	PID <u>102817</u>	SECTION <u>10</u>
		T <u>2</u> N R <u>15</u> E

TYPE MONUMENT MAG/WASHER  
 ON SURFACE - ~~BELOW~~ ON  
 OFFSET  $\odot$  PAVEMENT 3.5' ~~±~~ : RT  
7' TO RT EDGE PAVEMENT  
 STATION: 229+99.49



HORZ. DATUM: NAD83 2011 GEOID: 2012A NAVD88  
 GRID: NORTHING: 540820.684 EASTING: 1797467.177

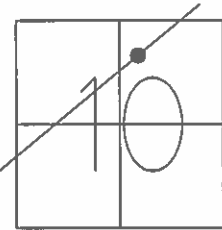
RECORD: 3-12-69  
 STA. 144+34  
 R.R. SPIKE ON  $\odot$  R/W  
 3-12-69  
 FD R.R. SPIKE  
 3" BELOW  
 7-20-92  
 SET P.K./WASHER  
 10-1-92  
 FD P.K. NAIL  
 6/24/08, DCH  
 SET MAG/WASHER  
 10-14-08, DCH  
 FD MAG/WASHER  
 REF 19  
 10-11-16, JFO  
 SET MAG/WASHER  
 10-9-18, JFO



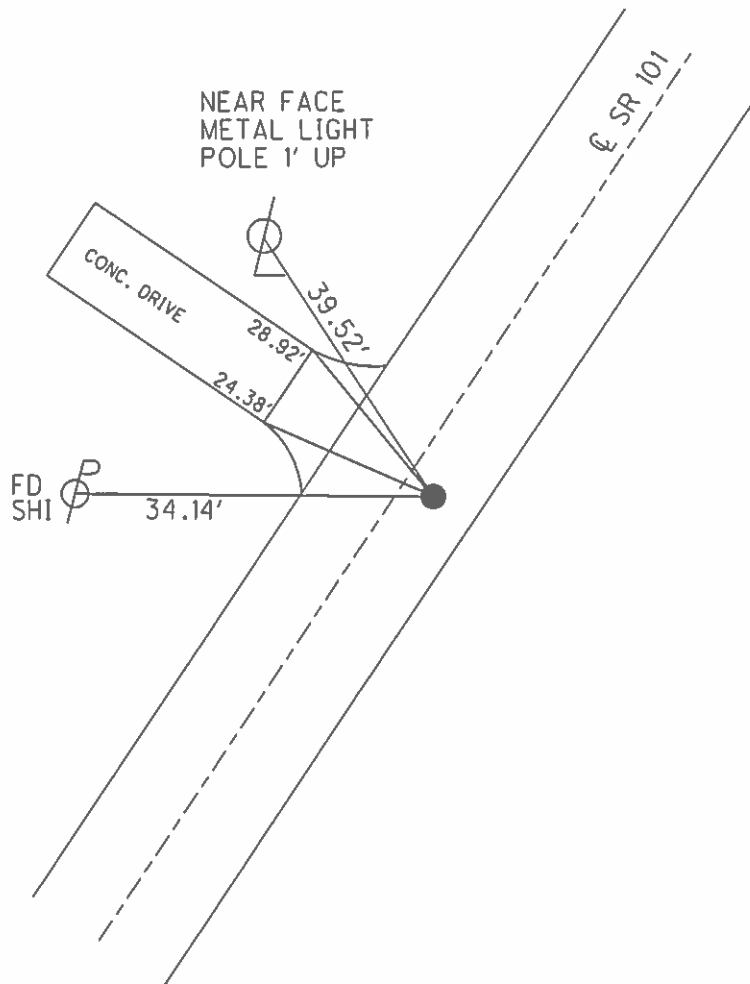
O.D.O.T. DISTRICT 2 SURVEY OFFICE (USE ONLY)

PERSONNEL \_\_\_\_\_ REFERENCE NO. 19 SHEET 20 OF 27  
 NOTES HOMAN DATE 6-24-08 ROUTE SR 101  
 H.C. ROUSOS WEATHER CLOUDY COUNTY SENECA  
 R.C. HOMAN TEMP. 80° TOWNSHIP CLINTON  
 \_\_\_\_\_ SECTION 10  
 \_\_\_\_\_ T 2 N R 15 E

TYPE MONUMENT P.K.NAIL  
 ON SURFACE - ~~BELOW~~ ON  
~~LEFT~~ - Q PAV'T - RIGHT 3'  
7' TO RT EDGE PAVEMENT  
 S.L.M. 230+01  
 GRID: NORTHING: 540820.803 EASTING: 1797467.152



RECORD: 3-12-69  
 STA. 144+34  
 R.R. SPIKE ON Q R/W  
 3/12/69  
 FD R.R. SPIKE  
 3" BELOW  
 7-20-92  
 SET P.K./WASHER  
 10/1/92  
 SET MAG/WASHER  
 10/14/08, DCH



O.D.O.T. DISTRICT 2 SURVEY OFFICE

PERSONNEL

REFERENCE NO. 19

SHEET 20 OF 27

NOTES CHENEY

DATE 7/20/92

ROUTE SR 101

H.C. RIPPLE

WEATHER SUNNY

COUNTY SENECA

R.C. BARBOUR

TEMP. 55°

TOWNSHIP CLINTON

GEYMAN

SECTION 10

T 2 N R 15 E

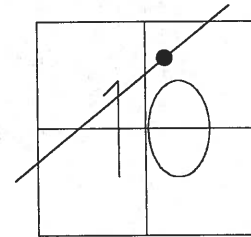
TYPE MONUMENT R.R. SPIKE

~~ON SURFACE~~ - BELOW 8.5"

~~LEFT~~ - Q PAV'T - RIGHT 3.0'

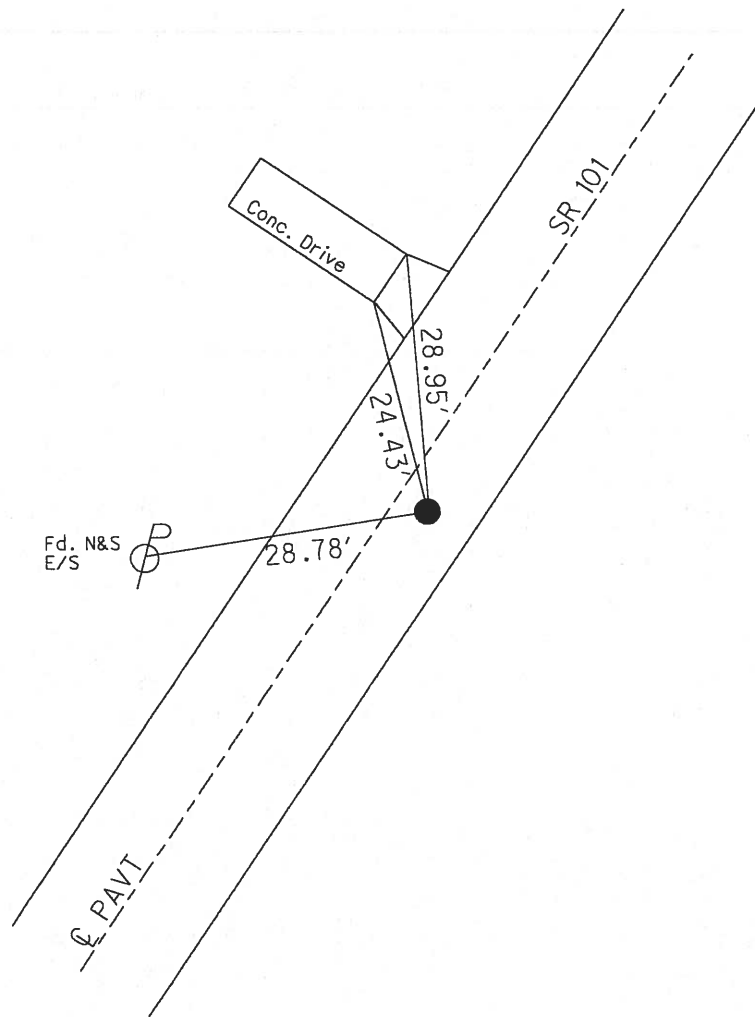
7' TO RT EDGE PAVEMENT

S.L.M. 230+01



Record: 3-12-69  
 R.R. Spk. on CL. R/W  
 Fd. 7-20-92  
 3" below surface  
 144+34

SET P.K./WASHER  
 10/1/92



O.D.O.T. DISTRICT 2 SURVEY OFFICE

PERSONNEL

REFERENCE NO. 19

SHEET 19 OF 26

NOTES Cheney

H.C. Ripple

R.C. Barbour

DATE 7-20-92

WEATHER SUNNY

TEMP. 55°

ROUTE SR#101

COUNTY SENECA

TOWNSHIP CLINTON

SECTION 10

T 2 N R 15 E

TYPE MONUMENT RR SPK

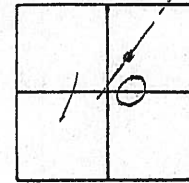
SET PK & WASHER  
10-1-92

~~ON SURFACE~~ - BELOW 8 1/2"

~~LEFT~~ PAV'T. - RIGHT 3.0'

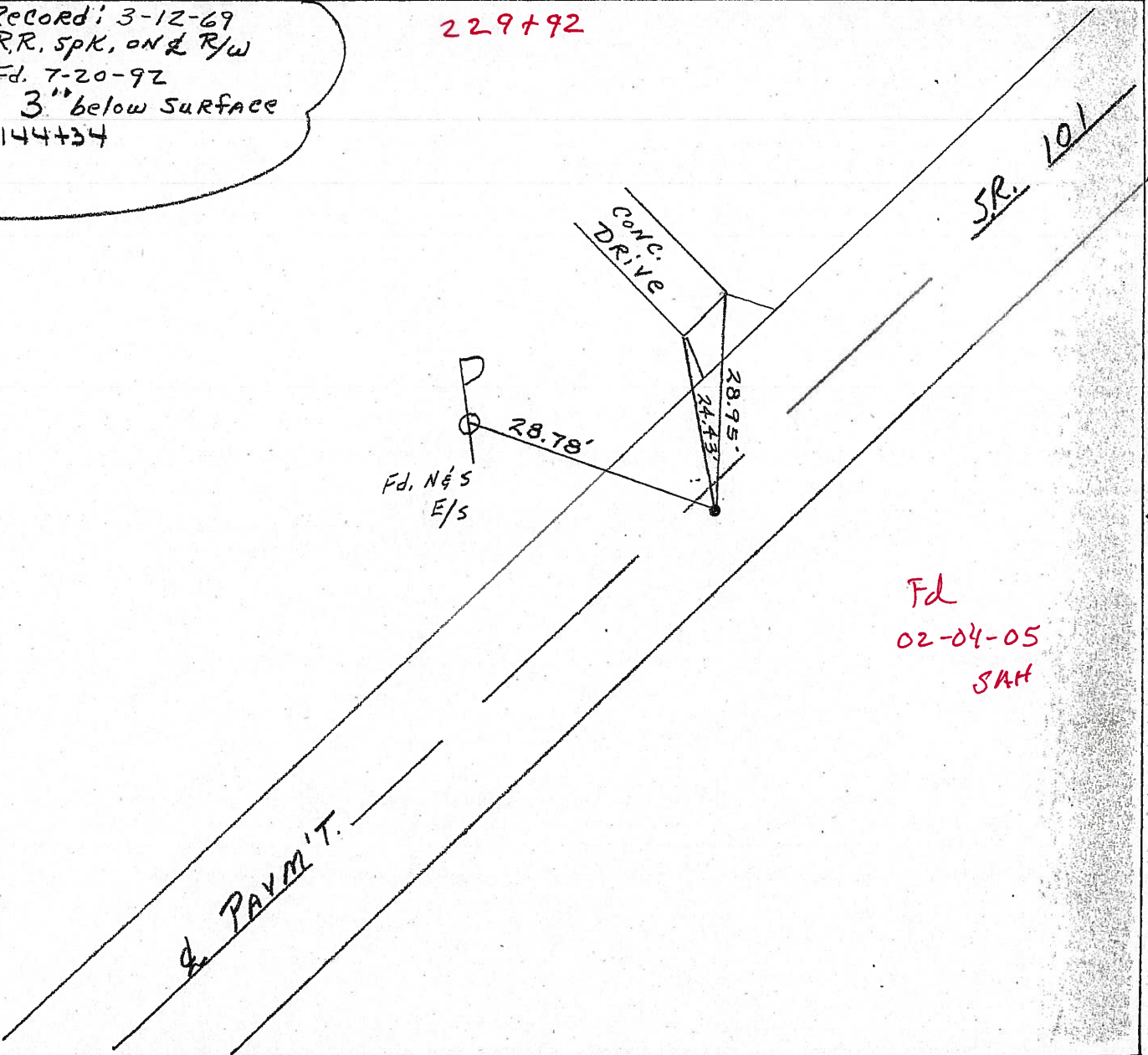
7' TO RT. EDGE PAVEMENT

S.L.M. 230+01



Record: 3-12-69  
RR. spk, on & R/w  
Fd. 7-20-92  
3" below surface  
144+34

229+92



O.D.O.T. DISTRICT 2 SURVEY OFFICE

PERSONNEL

REFERENCE NO. 19

SHEET <sup>20</sup>19 OF 26

NOTES Cheney

H.C. Ripple

R.C. BARBOUR

GENERAL

DATE 7-20-92

WEATHER SUNNY

TEMP. 55°

ROUTE SR#101

COUNTY SENECA

TOWNSHIP CLINTON

SECTION 10

T2 N R 15 E

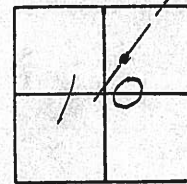
TYPE MONUMENT RR SPK 7-20-92 R=SET PK&WASHER 10-1-92

~~ON SURFACE~~ - BELOW 8 1/2"

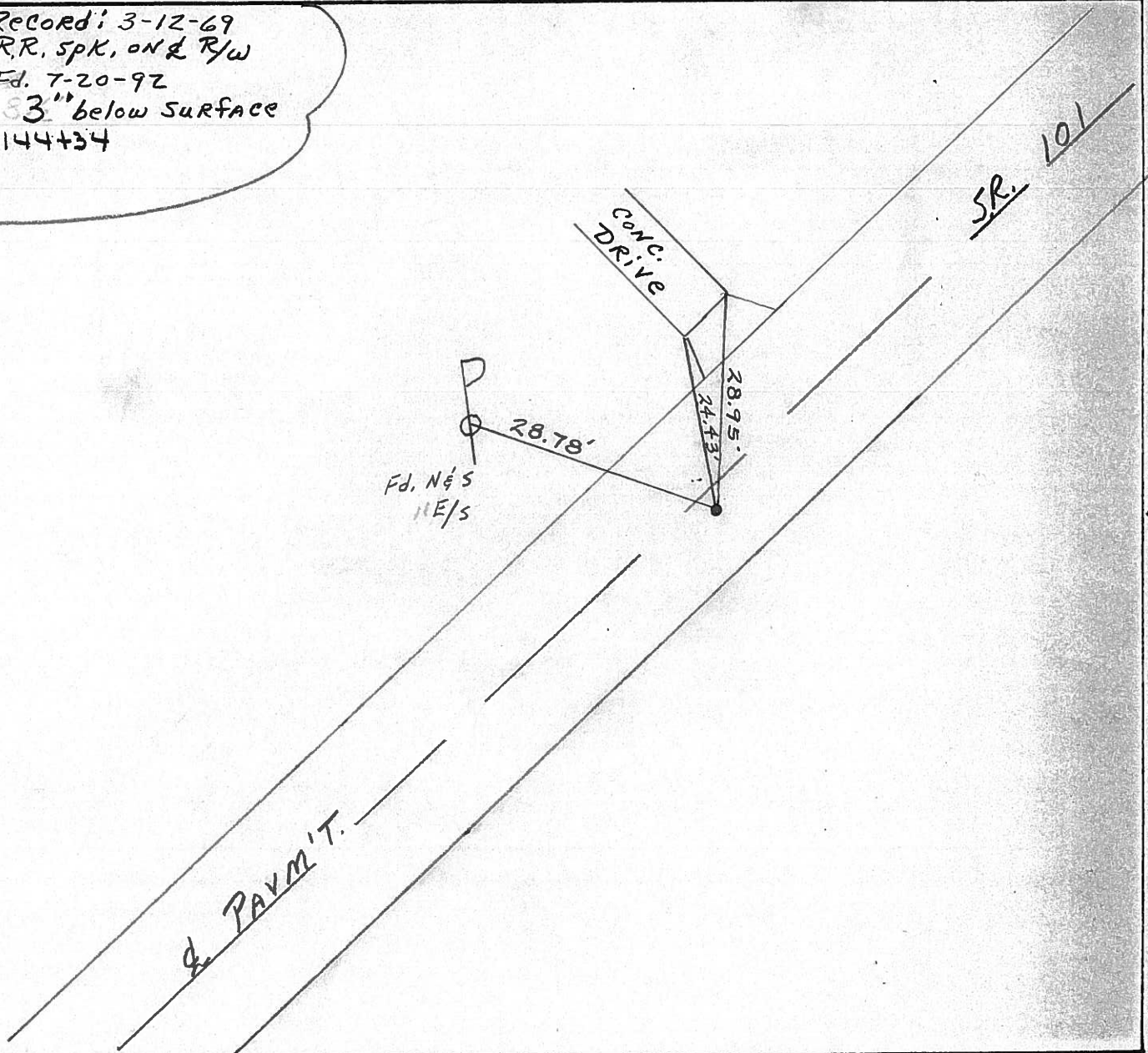
~~LEFT~~ & PAV'T. - RIGHT 3.0'

7' TO RT. EDGE PAVEMENT

S.L.M. 230+01



Record: 3-12-69  
 RR, SPK, ON & R/W  
 Fd. 7-20-92  
 3" below SURFACE  
 144+34



PERSONNEL TITLE PERSONNEL TITLE

COUNTY Seneca DATE 3/12/69

Ash

S. R. #101 (I.C.H.-271) WEATHER overcast

Crosin

Pipple

SEC. I-K-O-J TEMP. 30°

Geyman

Anderson

DESCRIPTION Ties for Control Points - Tiffin Corp. to Sand Co. Line JOB NO. \_\_\_\_\_

LEFT

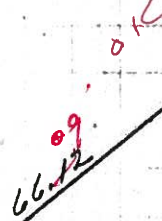
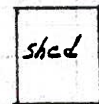
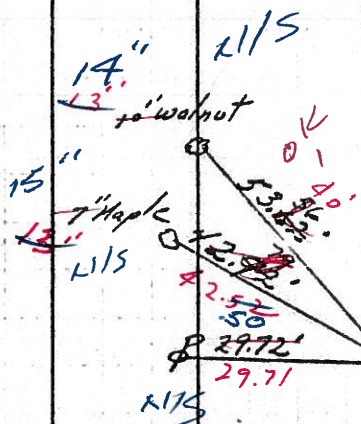
CENTER LINE

RIGHT

7-20-92  
85°

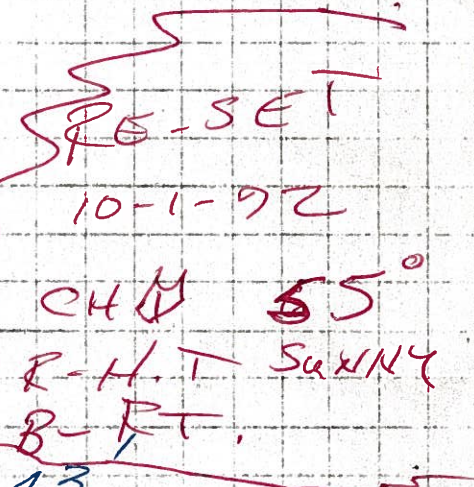
End Sec. I  
Begin Sec. K

4/12/84  
Sunny breezy  
57°



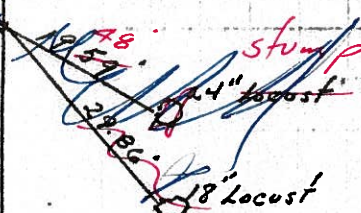
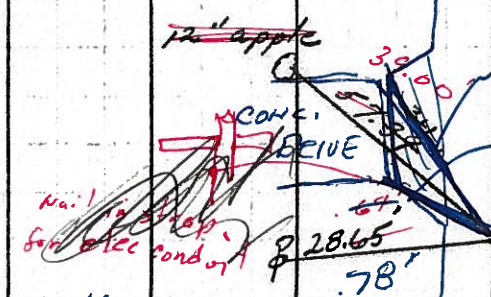
OK 2/26/71

0+00 241+64  
 155+98=0+00  
 Iron pin on E flow  
 8" below surface  
 1.5' RT &



CHM 55°  
 R-H.T. Sunny  
 B-RT.

19 230+01  
 144+34  
 F.D.R. Sp. on E flow  
 3" below surface  
 2.5' RT &  
 3.0' RT &

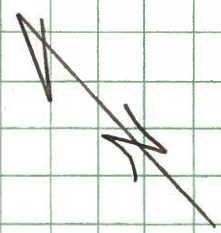


OK 2/26/71

PERSONNEL	TITLE	PERSONNEL	TITLE	COUNTY	DATE
Ash				Seneca	3/12/69
Cronin				S. R. #101 (I.C.H-271)	WEATHER overcast
Ripple				SEC. I-K-0-J	TEMP. 30°
Geyman		Anderson			

DESCRIPTION Ties for Control Points - Tiffin Corp. to Sand. Co. Line JOB NO. \_\_\_\_\_

End Sec. I  
Begin Sec. K



20

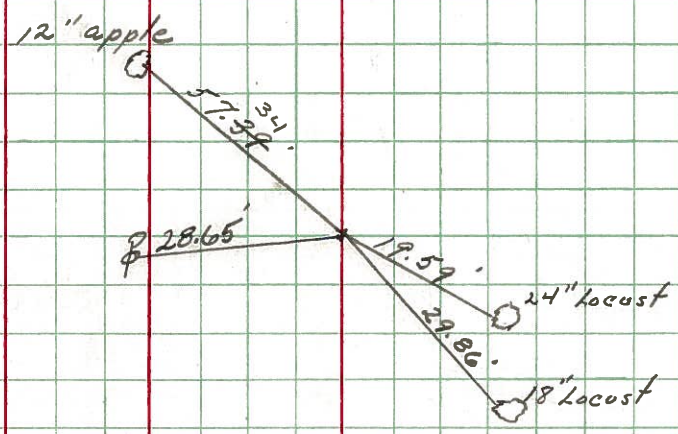
155498 = 0+00  
Iron pin on E R/W  
8" below surface



OK 2/26/71

19

144434  
R.C. Sp. on E R/W  
3" below surface



OK 2/26/71

PERSONNEL TITLE PERSONNEL TITLE

COUNTY Scheneca

DATE 2-4-64

Krabill

Kowalski

Geyman

S. R. # 101

WEATHER

SEC.

TEMP.

DESCRIPTION

LEFT

CENTER LINE

RIGHT

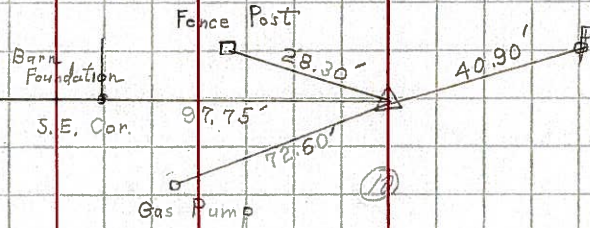
JOB NO.

16

STA. 113+00

Iron Pin

# 369

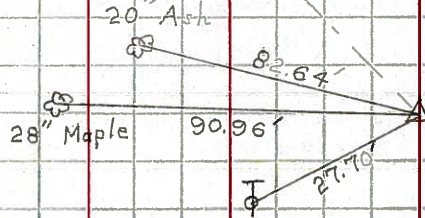


17

STA. 120+39

Iron Pin

# 370

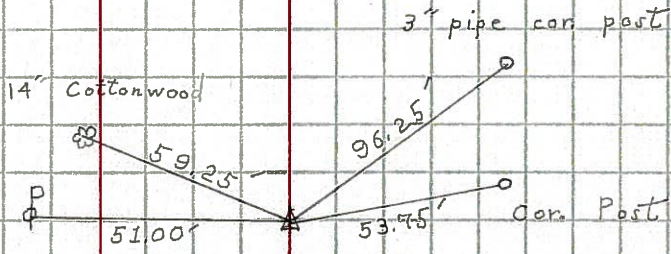


18

STA. 127+53

Iron Pin

# 371



19

STA. 144+34

Iron Pin

# 372

