

O.D.O.T. DISTRICT 2 SURVEY OFFICE (USE ONLY)

PERSONNEL

REFERENCE NO. 20

SHEET 21 OF 27

NOTES SRHOADES

DATE 3/23/18

ROUTE SR 101

H.C. O'DONNELL

WEATHER SUNNY

COUNTY SENECA

R.C. SEAMAN

TEMP. 30°

TOWNSHIP CLINTON

SECTION 10

DWG BY MILLER

PID 102817

T 2 N R 15 E

TYPE MONUMENT MAG/WASHER

ON SURFACE - ~~BELOW~~ ON

OFFSET Q PAVEMENT 2' ~~RT~~ : RT

8' TO RT EDGE PAVEMENT

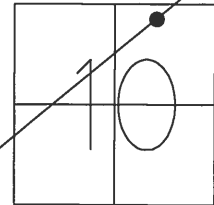
STATION: 241+64.28

HORIZ.DATUM: NAD83 2011

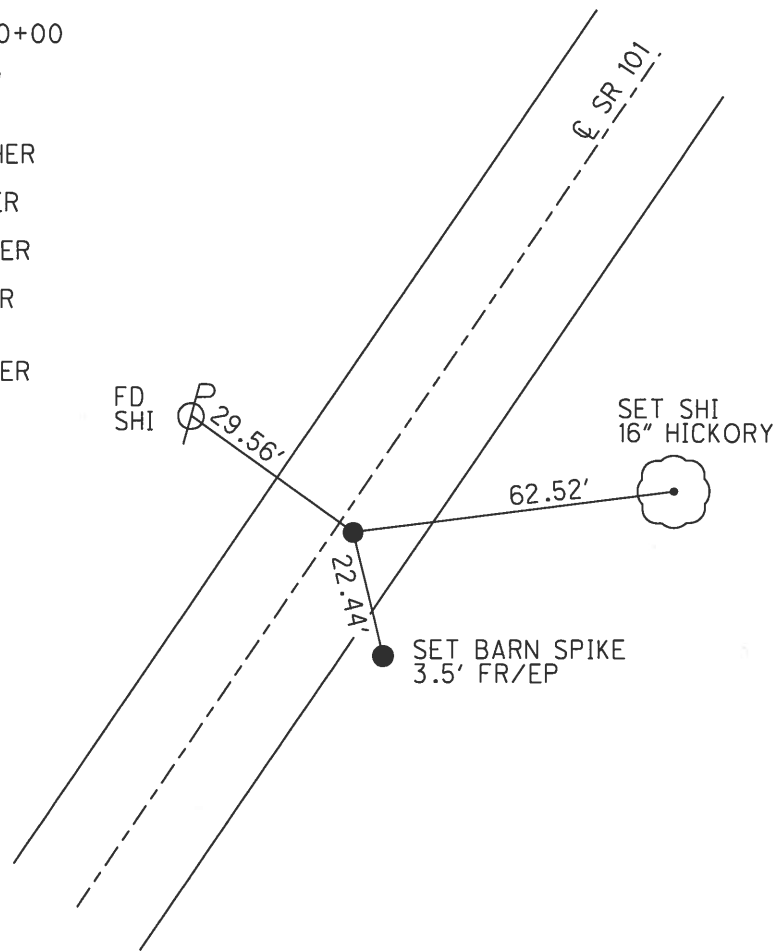
GEOID: 2012A NAVD88

GRID: NORTHING: 541720.900

EASTING: 1798206.340



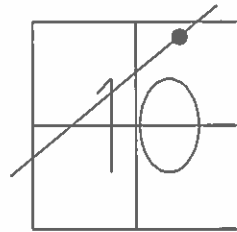
RECORD :
 STA.155+98 = 0+00
 SEC.I SEC.K
 IPIN ON Q R/W
 8" BELOW
 3-12-69
 SET P.K./WASHER
 10-1-92
 FD P.K./WASHER
 6/24/08, DCH
 SET MAG/WASHER
 10-14-08, DCH
 FD MAG/WASHER
 REF20
 10-11-16, JFO
 SET MAG/WASHER
 10-9-18, JFO



O.D.O.T. DISTRICT 2 SURVEY OFFICE (USE ONLY)

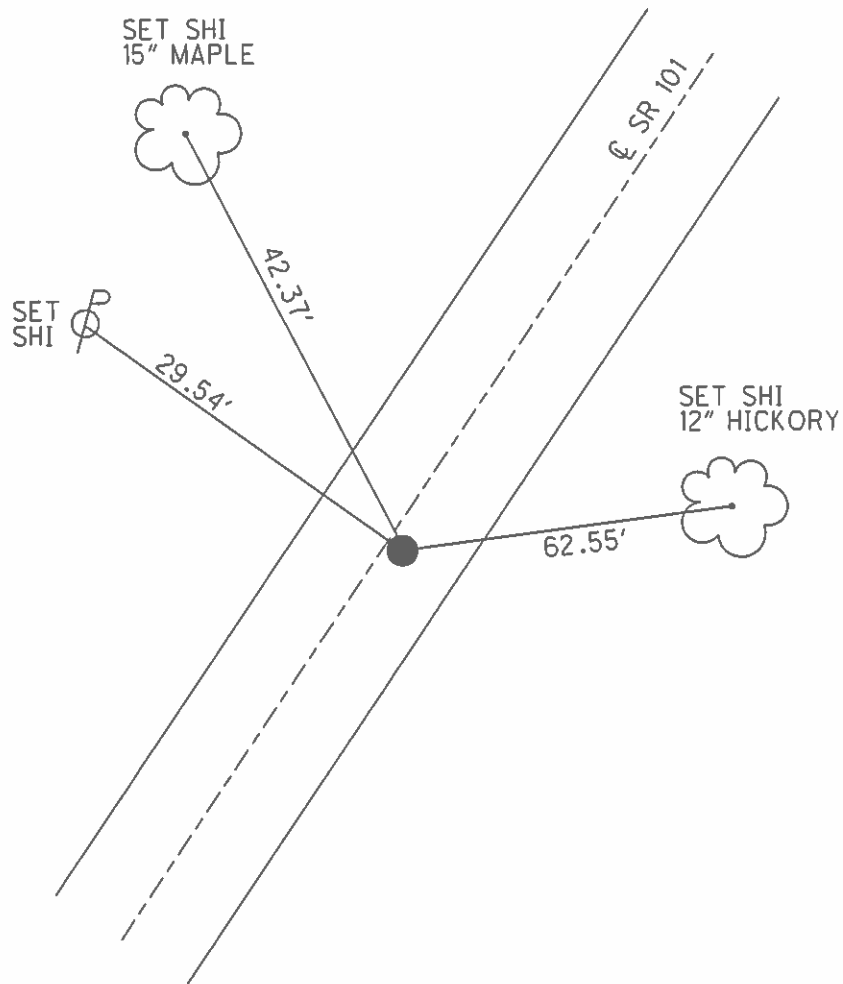
PERSONNEL _____ REFERENCE NO. 20 SHEET 21 OF 27
 NOTES _____ DATE 6-24-08 ROUTE SR 101
 H.C. ROUSOS WEATHER CLOUDY COUNTY SENECA
 R.C. HOMAN TEMP. 80° TOWNSHIP CLINTON
 _____ SECTION 10
 _____ T 2 N R 15 E

TYPE MONUMENT P.K./WASHER
 ON SURFACE - ~~BELOW~~ ON
~~LEFT~~ - Q PAV'T - RIGHT 2'
8' TO RT EDGE PAVEMENT
 S.L.M. 241+64
 GRID: NORTHING: 541720.957 EASTING: 1798206.238



1022

RECORD :
 STA.155+98 = 0+00
 SEC.I SEC.K
 IPIN ON Q R/W
 8" BELOW
 3/12/69
 SET P.K./WASHER
 10/1/92
 SET MAG/WASHER
 10/14/08, DCH



O.D.O.T. DISTRICT 2 SURVEY OFFICE

PERSONNEL _____

REFERENCE NO. 20

SHEET 21 OF 27

NOTES CHENEY

DATE 7/20/92

ROUTE SR 101

H.C. RIPPLE

WEATHER SUNNY

COUNTY SENECA

R.C. BARBOUR

TEMP. 55°

TOWNSHIP CLINTON

GEYMAN

SECTION 10

T 2 N R 15 E

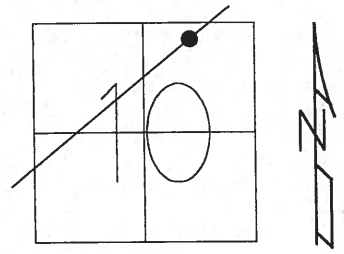
TYPE MONUMENT P.K./WASHER

ON SURFACE - ~~BELOW~~ ON

~~LEFT~~ - CL PAV'T - RIGHT 2'

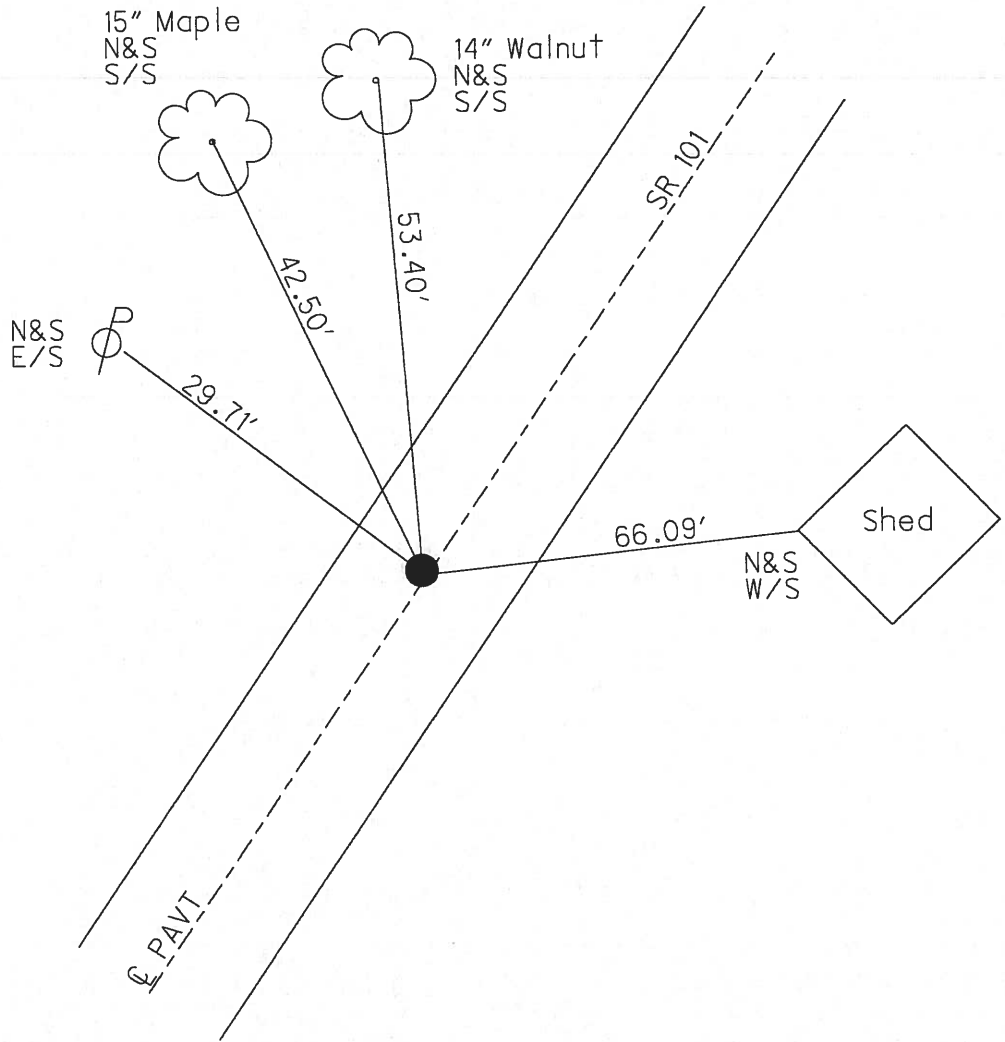
8' TO RT EDGE PAVEMENT

S.L.M. 241+64



Record : 3-12-69
 Iron Pin on C.L. R/W
 8" below surface
 155+98 = 0+00
 Sec. I Sec. K

SET P.K./WASHER
 10/1/92



O.D.O.T. DISTRICT 2 SURVEY OFFICE

PERSONNEL

REFERENCE NO. 20

SHEET 20 OF 26

NOTES Cheney

H.C. Ripple

DATE 7-20-92

ROUTE SR #101

R.C. BARBOUR

WEATHER SUNNY

COUNTY SENECA

TEMP. 55°

TOWNSHIP CLINTON

SECTION 10

T. 2 N. R. 15 E

TYPE MONUMENT PK washer?

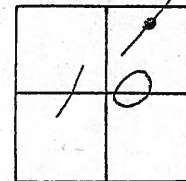
ON SURFACE - BELOW yes

~~LEFT~~ - ~~Q~~ PAV'T. - RIGHT 2'

8' TO RT. EDGE PAVEMENT

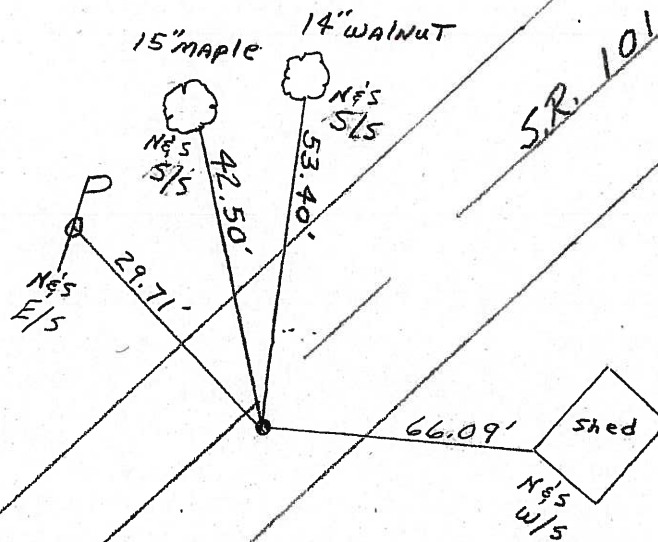
S.L.M. 241+64

Set
PK washer
10-1-92



Record: 3-12-69
IRON PIN ON & R/W
8" below surface
155+98 = 0+00
Sec. I - SECK

241+57



Fd
02-04-05
SAH

O.D.O.T. DISTRICT 2 SURVEY OFFICE

PERSONNEL

REFERENCE NO. 20

SHEET 20 OF 26

NOTES Cheney

H.C. Ripple

DATE 7-20-92

ROUTE SR #101

R.C. Barbour

WEATHER SUNNY

COUNTY Seneca

Barbour

TEMP. 55°

TOWNSHIP CLINTON

SECTION 10

T. 2 N. R. 15 E

TYPE MONUMENT PK & washer? PK set for

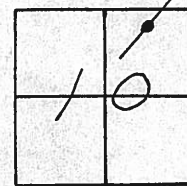
PK & washer
10-1-92

ON SURFACE - BELOW yes

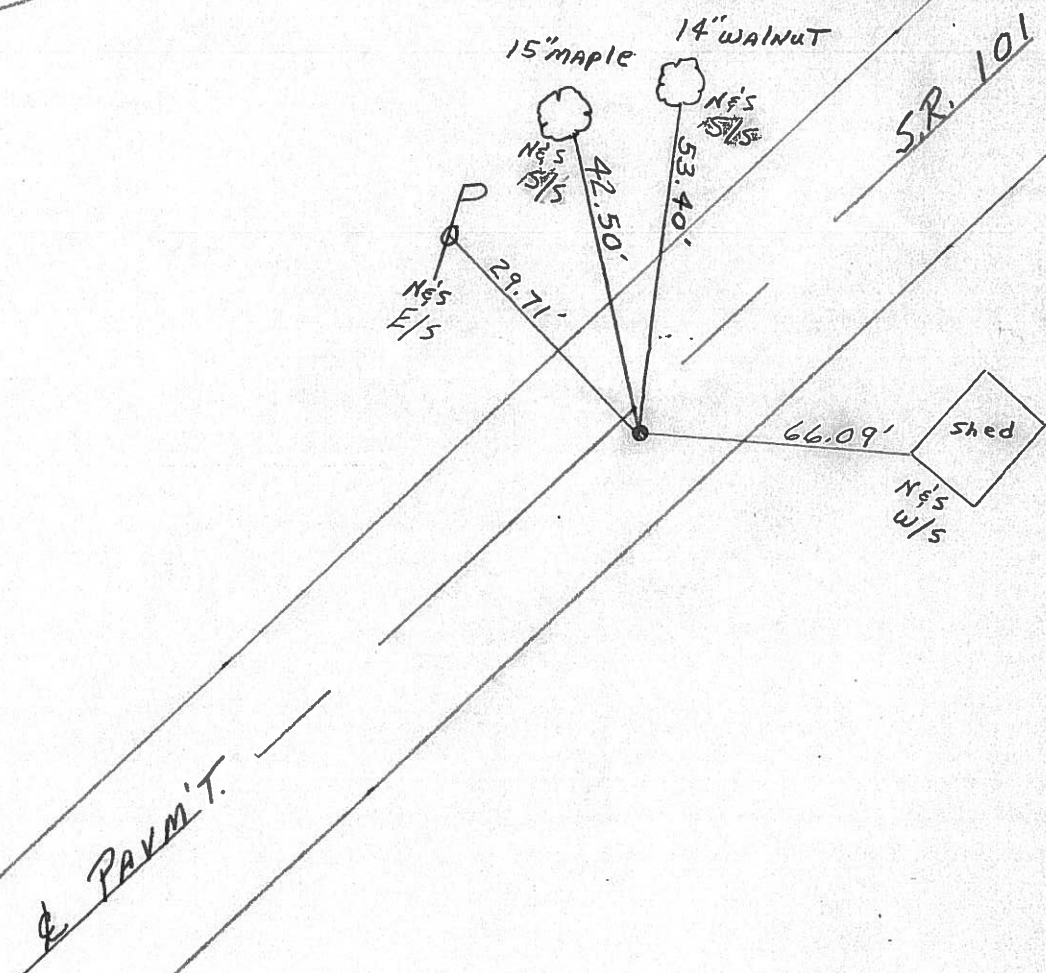
LEFT- & PAV'T. - RIGHT 2'

8' TO RT. EDGE PAVEMENT

S.L.M. 241+64



Record: 3-12-69
IRON PIN ON & R/W
8" below SURFACE
155+98 = 0+00
Sec. I • Sec. K



PERSONNEL TITLE PERSONNEL TITLE

COUNTY Seneca DATE 3/12/69

Ash
Cronin
Ripple
Geyman

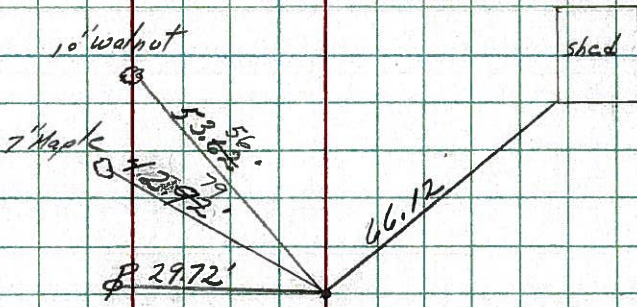
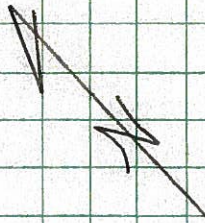
S. R. #101 (I.C.H.-271) WEATHER overcast

Anderson SEC. I-K-O-J TEMP. 30°

DESCRIPTION Ties for Control Points - Tiffin Corp. to Sand. Co. Line JOB NO.

LEFT CENTER LINE RIGHT

End Sec. J
Begin Sec. K

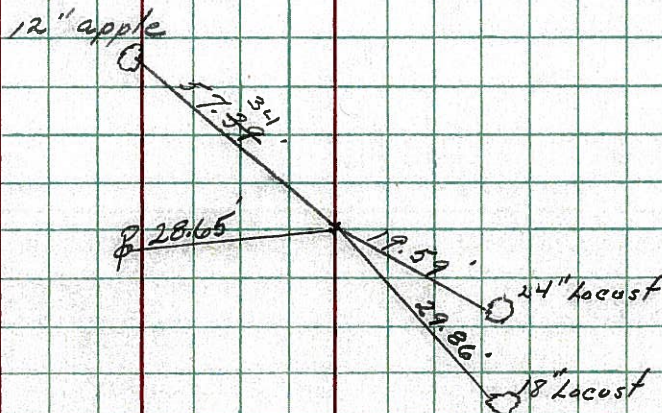


OK 2/26/71

20



155 + 98 = 0400
Iron pin on E.R./W
8" below surface



OK 2/26/71

19



144 + 34
R.B. Spk. on E.R./W
3" below surface

PERSONNEL TITLE PERSONNEL TITLE

COUNTY Seneca DATE 2-4-64

Krell
Kowalski
Geyman

S. R. # 101

WEATHER

SEC.

TEMP.

DESCRIPTION

LEFT

CENTER LINE

RIGHT

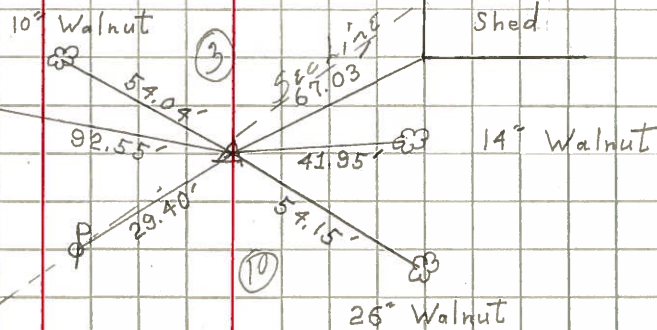
JOB NO.

20

STA. 155+98
P.K. nail (Iron Pin)
373

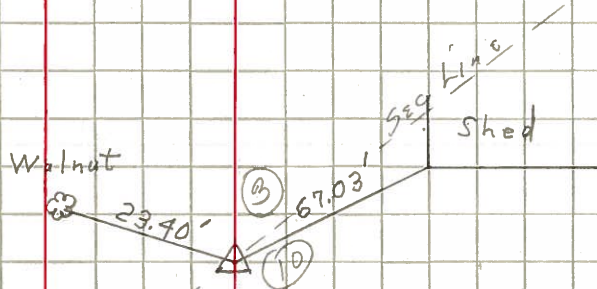
End of Sect. I

Start of Sect. K



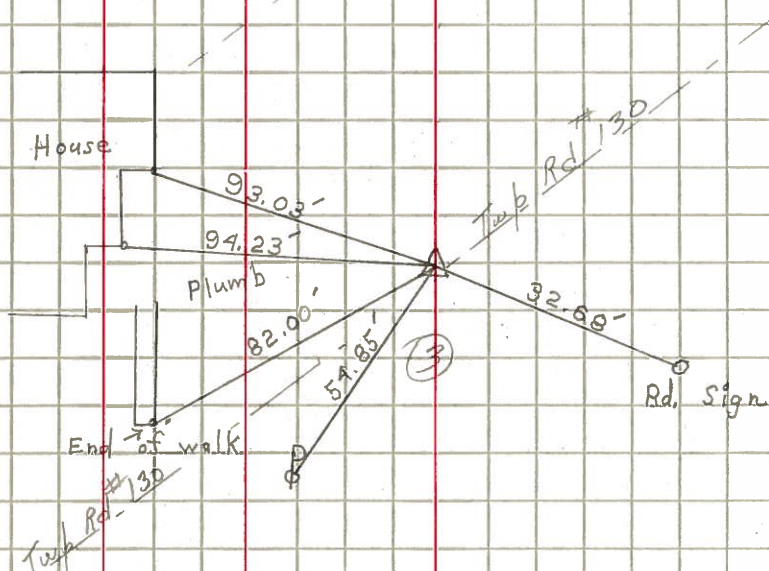
20

STA. 0+00
or
155+98
Iron Pipe
373



21

STA. 7+77
Iron Pin
374



PERSONNEL TITLE PERSONNEL TITLE
 Krebill _____
 Kowalski _____
 Geyman _____

COUNTY Seneca

DATE 2-4-64

S. R. # 101

WEATHER

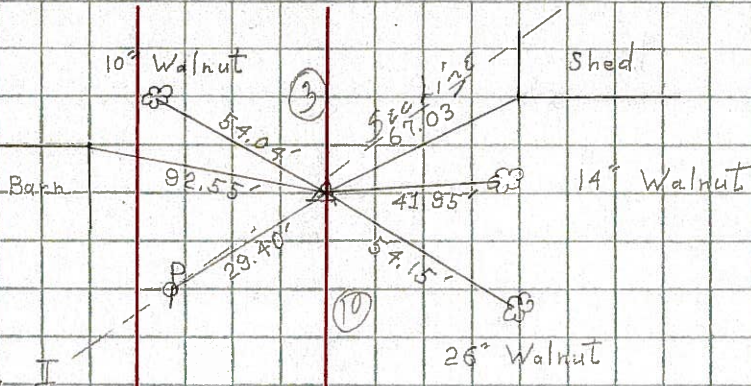
SEC.

TEMP.

DESCRIPTION LEFT CENTER LINE RIGHT JOB NO.

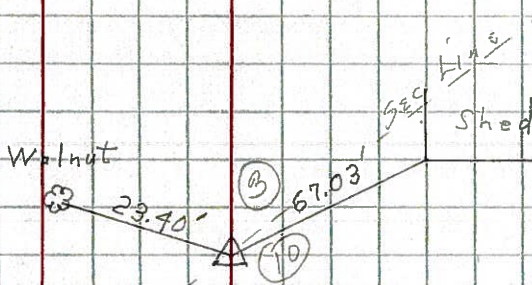
20

STA. 155+98
 P. K. nail (Iron Pin)
 # 373



20

STA. 0+00
 or
 155+98
 Iron Pipe
 # 373



21

STA. 7+77
 Iron Pin
 # 374

