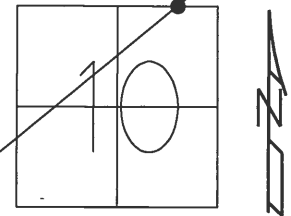


O.D.O.T. DISTRICT 2 SURVEY OFFICE (USE ONLY)

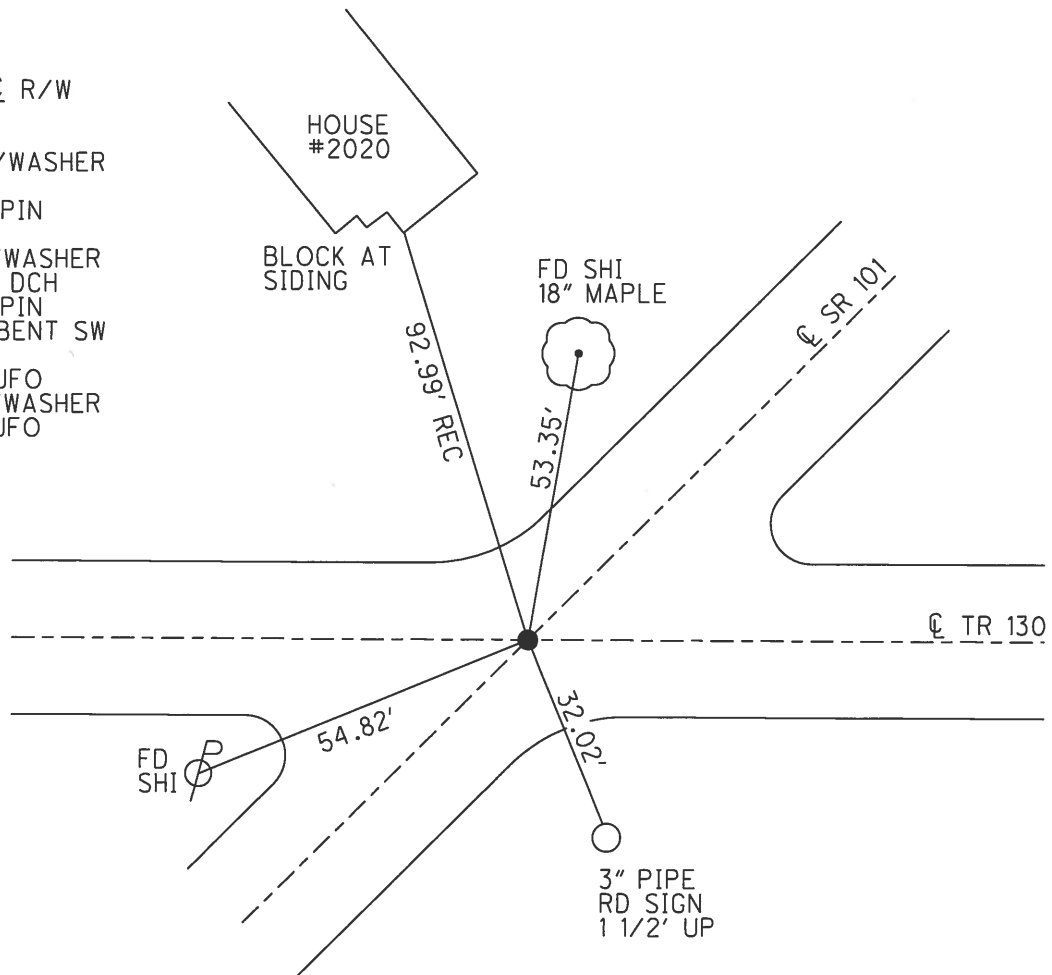
PERSONNEL \_\_\_\_\_ REFERENCE NO. 21 SHEET 22 OF 27  
 NOTES RHOADES DATE 3/23/18 ROUTE SR 101  
 H.C. O'DONNELL WEATHER SUNNY COUNTY SENECA  
 R.C. SEAMAN TEMP. 33° TOWNSHIP CLINTON  
 SECTION 10  
 DWG BY MILLER PID 102817 T 2 N R 15 E

TYPE MONUMENT 5/8" IPIN  
 ON SURFACE - ~~BELOW~~ 5"  
 OFFSET Q PAVEMENT ON ~~LT~~ : ~~RT~~  
10' TO RT EDGE PAVEMENT  
 STATION: 249+03.22



HORIZ.DATUM: NAD83 2011 GEOID: 2012A NAVD88  
 GRID: NORTHING: 542304.144 EASTING: 1798660.054

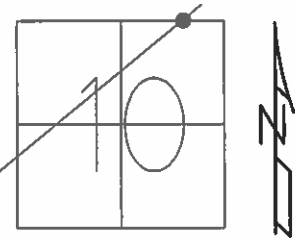
RECORD:  
 STA. 7+77  
 IPIN ON Q R/W  
 2" BELOW  
 11-22-65  
 SET P.K./WASHER  
 10-1-92  
 FD 5/8" IPIN  
 4" DOWN  
 SET MAG/WASHER  
 10-14-08, DCH  
 FD 5/8" IPIN  
 5" DOWN BENT SW  
 REF21  
 10-11-16, JFO  
 SET MAG/WASHER  
 10-9-18, JFO



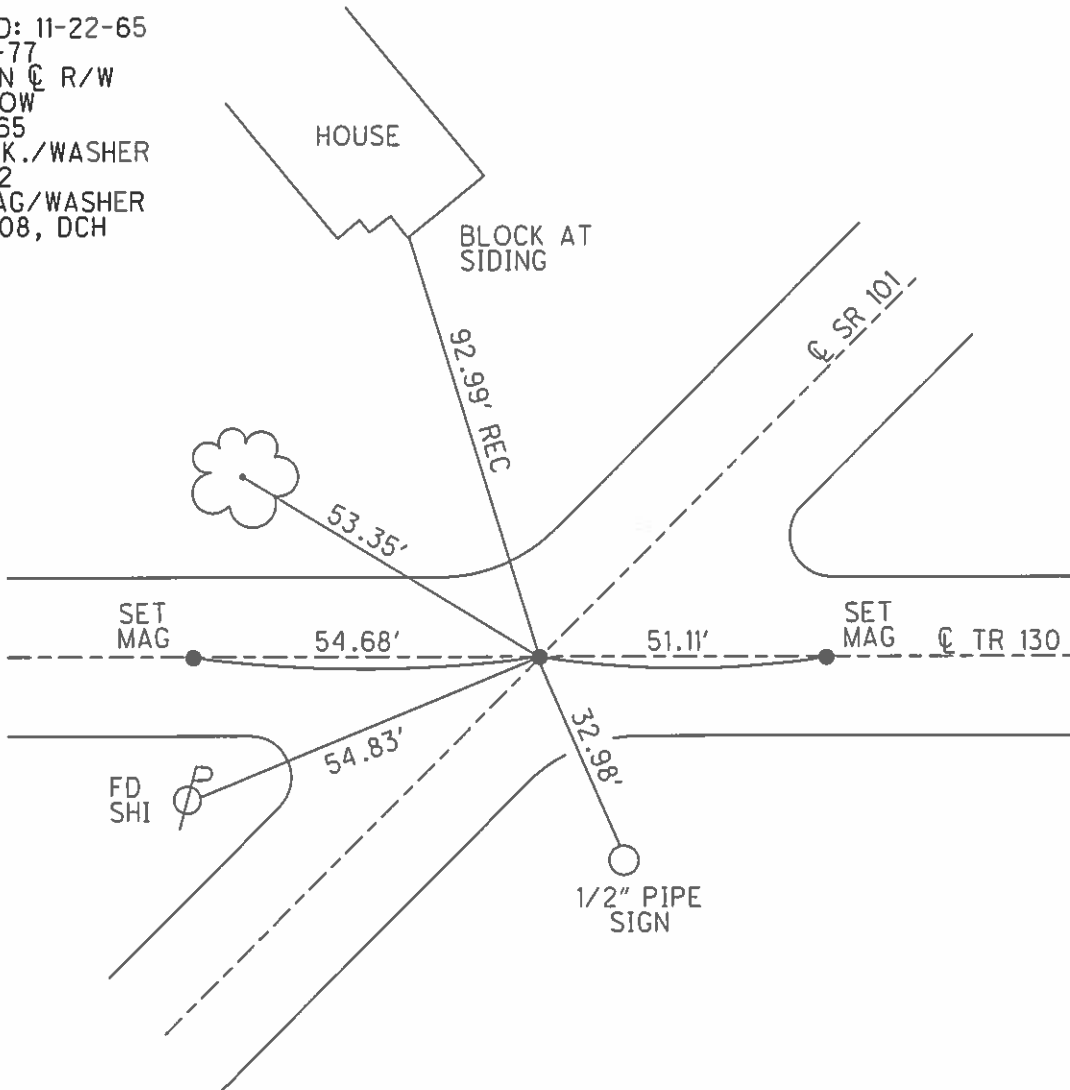
**O.D.O.T. DISTRICT 2 SURVEY OFFICE (USE ONLY)**

PERSONNEL	REFERENCE NO.	<u>21</u>	SHEET	<u>22</u>	OF	<u>27</u>
NOTES	<u>HOMAN</u>	DATE	<u>6-24-08</u>	ROUTE	<u>SR 101</u>	
H.C.	<u>ROUSOS</u>	WEATHER	<u>CLOUDY</u>	COUNTY	<u>SENECA</u>	
R.C.	<u>HOMAN</u>	TEMP.	<u>80°</u>	TOWNSHIP	<u>CLINTON</u>	
				SECTION	<u>10</u>	
				T	<u>2</u>	R
					<u>15</u>	<u>E</u>

TYPE MONUMENT IPIN  
~~ON SURFACE~~ - BELOW 4"  
 LEFT - ☉ PAV'T - RIGHT ON  
10' TO RT EDGE PAVEMENT  
 S.L.M. 249+06  
 GRID: NORTHING: 542304.276 EASTING: 1798660.101



RECORD: 11-22-65  
 STA. 7+77  
 IPIN ON ☉ R/W  
 2" BELOW  
 11/22/65  
 SET P.K./WASHER  
 10/1/92  
 SET MAG/WASHER  
 10/14/08, DCH



O.D.O.T. DISTRICT 2 SURVEY OFFICE

PERSONNEL

REFERENCE NO. 21

SHEET 22 OF 27

NOTES CHENEY

DATE 7/21/92

ROUTE SR 101

H.C. RIPPLE

WEATHER SUNNY

COUNTY SENECA

R.C. BARBOUR

TEMP. 55°

TOWNSHIP CLINTON

GEYMAN

SECTION 10

T 2 N R 15 E

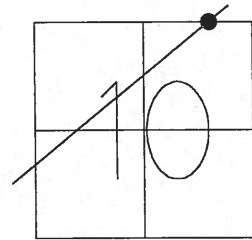
TYPE MONUMENT P.K./WASHER

ON SURFACE - ~~BELOW~~ ON

LEFT - C PAV'T - RIGHT ON

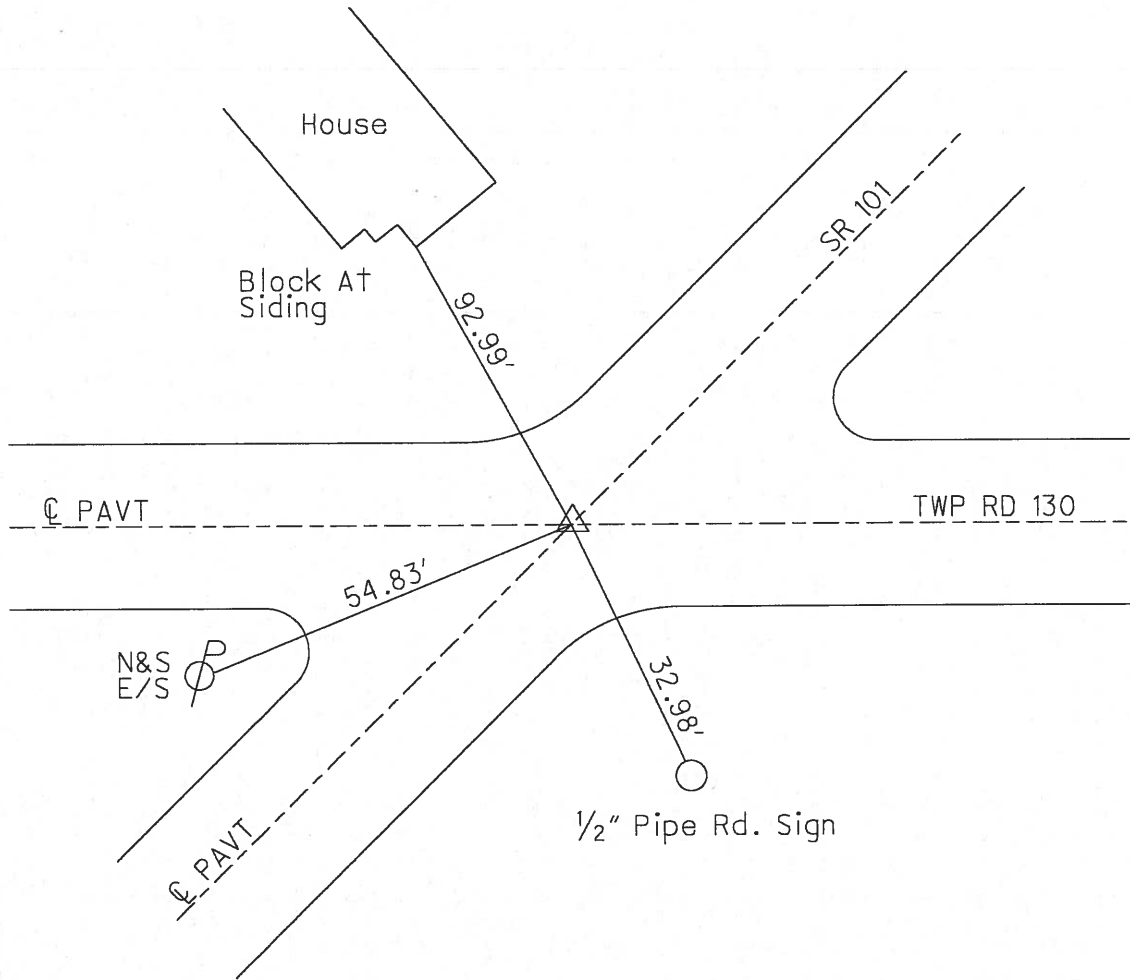
10' TO RT EDGE PAVEMENT

S.L.M. 249+06



Record: 11-22-65  
Iron Pin on C.L. R/W  
2" Below Surface  
STA 7+77

SET P.K./WASHER  
10/1/92



O.D.O.T. DISTRICT 2 SURVEY OFFICE

PERSONNEL

REFERENCE NO. 21

SHEET 21 OF 26

NOTES Cheney

H.C. RIPPLE

R.C. BARBOUR

DATE 7-21-92

WEATHER SUNNY

TEMP. 55°

ROUTE S.R.#101

COUNTY SENECA

TOWNSHIP CLINTON

SECTION 3 & 10

T2 N R 15 E

TYPE MONUMENT P.K./WASHER ?

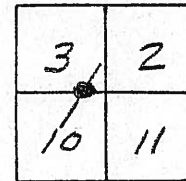
SET P.K. WASHER  
10-01-92

ON SURFACE - BELOW YES

~~LEFT - & PAV'T. - RIGHT~~ yes

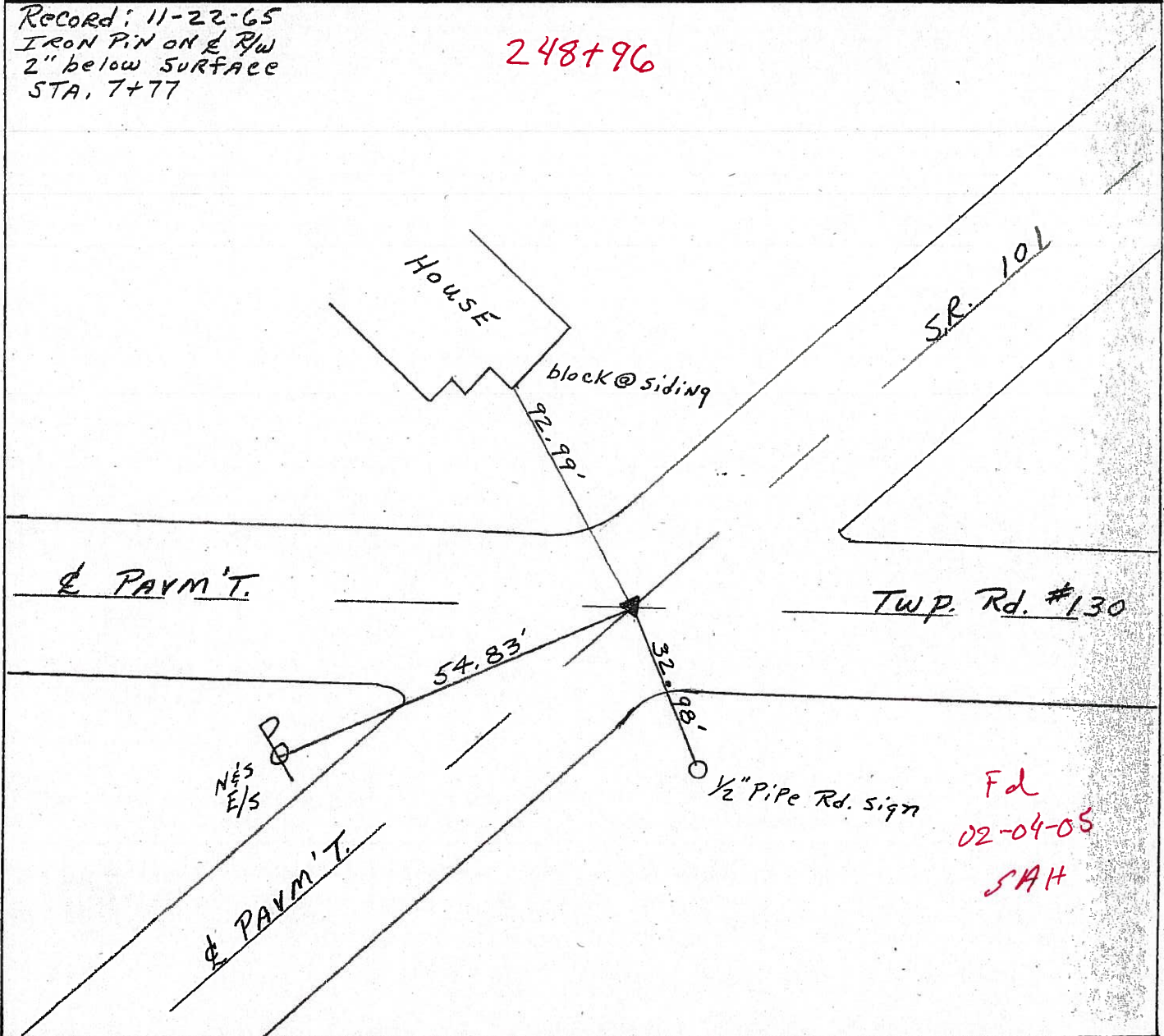
10' TO RT. EDGE PAVEMENT

S.L.M. 249+06



Record: 11-22-65  
IRON PIN ON & RW  
2" below SURFACE  
STA. 7+77

**248+96**



**FD**  
**02-04-05**  
**SAH**

# O.D.O.T. DISTRICT 2 SURVEY OFFICE

PERSONNEL

REFERENCE NO. 21

SHEET 22 OF 26

NOTES Cheney

H.C. RIPPLE

R.C. BARBOUR

DATE 7-21-92

WEATHER SUNNY

TEMP. 55°

ROUTE S.R.#101

COUNTY Seneca

TOWNSHIP CLINTON

SECTION 3 & 10

T 2 N R 15 E

TYPE MONUMENT P.K. / WASHER ?

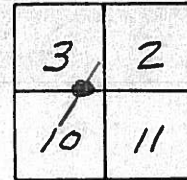
set PK & washer  
10-01-92

ON SURFACE - BELOW YES

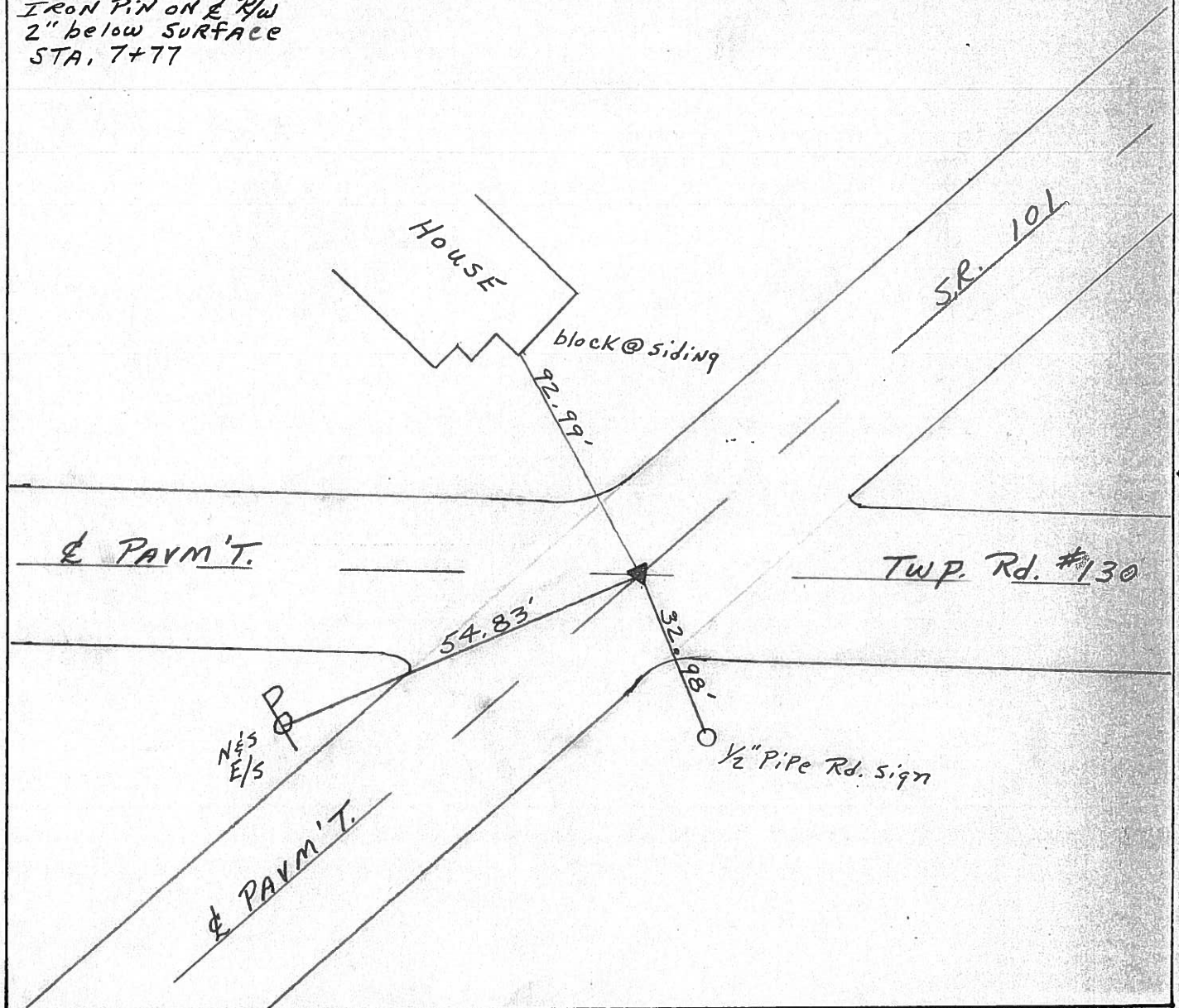
~~LEFT - & PAV'T. - RIGHT~~ yes

10' TO RT. EDGE PAVEMENT

S.L.M. 249+06



Record: 11-22-65  
IRON PIN ON & RW  
2" below SURFACE  
STA. 7+77



PERSONNEL TITLE PERSONNEL TITLE COUNTY Seneca DATE 11-22-60  
 # \_\_\_\_\_ S. R. # 101 WEATHER \_\_\_\_\_  
 SEC. \_\_\_\_\_ TEMP. \_\_\_\_\_

DESCRIPTION LEFT CENTER LINE RIGHT JOB NO.

(24)

~~Found~~  
 Ties Good  
 2/24/69  $\Delta = 2^{\circ} 24' \text{ Rt.}$   
 Sta. 37+92.7  
 R.R. spk. on  $\&$  R/W  
 on surface  
 6.8' Lt & PVT  
 377  
 8472

Guard Rail Post  
 38.83'  
 6.5' Lt.  $\&$   
 36.28'  
 31.51'  
 29.31'  
 29.54'  
 33.48'  
 32.49'  
 top of  
 N/S TOP  
 ON Guard Rail Pas.  
 Top  
 MEAS. DIST FROM LAST POINT. COULDN'T LOCATE  
 5.5' Rt.  $\&$   
 279+63  
 4/12/84  
 sunny breezy  
 570

(23)

Found 2/24/69  
 $\Delta = 1^{\circ} 07' \text{ Rt.}$   
 Sta. 33+72.3  
 R.R. spk. on  $\&$  R/W  
 on surface  
 5.5' Lt  $\&$   
 376 8471

24" Pine  
 30"  
 24" Pine  
 30"  
 6" Ash  
 14"  
 12"  
 13 1/2"  
 274+73  
 37+92.7  
 21+47  
 13 1/2"

(22)

Found 2/24/69  
 16" GINKGO FAN TREE N/S  
 Sta. 24+47  
 R.R. spk. on  $\&$  R/W  
 on surface  
 2' Lt & PVT  
 375 8470

24" Maple  
 2' Lt.  $\&$   
 50.98'  
 58.06'  
 24.40  
 24.38  
 24.38  
 4  
 14" DEAD  
 12" Maple  
 N/S ON TOP  
 266+07  
 240+59  
 13+46  
 260+05  
 N/S ON TOP  
 Guard Rail Posts  
 #130

(21)

Ties Good  
 2/24/69  
 Sta. 7+77  
 Iron Pin on  $\&$  R/W  
 2" below surface  
 377  
 8469

House  
 block siding  
 92.99  
 93.02  
 54.85  
 54.83  
 7-21-1992  
 Mostly cloudy  
 1.5" cloud  
 1 1/2" Pipe Rd. sign  
 249+06  
 248+89 = SLM  
 46+70  
 26+59  
 ON  $\&$  OK  
 98  
 32.75  
 54.85  
 54.83  
 CH-10  
 E.H. TAPE

RE-SET  
 10-1-92  
 10-1-92

PERSONNEL TITLE PERSONNEL TITLE

COUNTY Seneca

DATE 2-4-64

Krabill

Kowalski

Geyman

S. R. # 101

WEATHER

SEC.

TEMP.

DESCRIPTION

LEFT

CENTER LINE

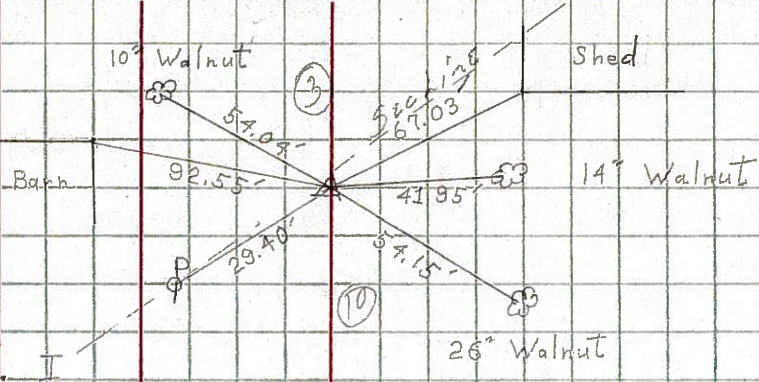
RIGHT

JOB NO.

20

STA. 155+98

P.K. nail (Iron Pin)  
# 373

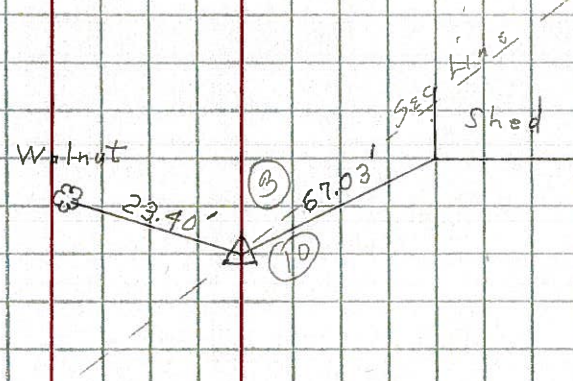


End of Sect. J  
Start of Sect. K

20

STA. 0+00  
or  
155+98

Iron Pipe  
# 373



21

STA. 7+77

Iron Pin  
# 374

