

O.D.O.T. DISTRICT 2 SURVEY OFFICE (USE ONLY)

PERSONNEL

REFERENCE NO. 22

SHEET 23 OF 27

NOTES RHOADES DATE 3/23/18

H.C. O'DONNELL WEATHER SUNNY

R.C. SEAMAN TEMP. 33°

ROUTE SR 101

COUNTY SENECA

TOWNSHIP CLINTON

SECTION 3

DWG BY MILLER PID 102817

T 2 N R 15 E

TYPE MONUMENT MAG/WASHER

ON SURFACE - ~~BELOW~~ ON

OFFSET Q PAVEMENT 2' LT : ~~RT~~

8' TO LT EDGE PAVEMENT

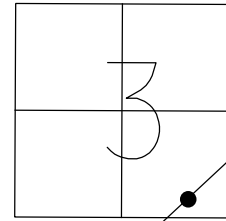
STATION: 266+04.38

HORZ. DATUM: NAD83 2011

GEOID: 2012A NAVD88

GRID: NORTHING: 543626.968

EASTING: 1799729.674



RECORD:  
 STA. 24+47  
 R.R. SPIKE ON Q R/W  
 ON SURFACE  
 11-22-65  
 FD P.K. NAIL  
 7/21/92, CHENEY  
 SET P.K./WASHER  
 10-1-92  
 FD MAG/WASHER  
 REF 22  
 10-12-16, JFO  
 SET MAG/WASHER  
 10-9-18, JFO

FD SHI  
 20" GINKGO FAN



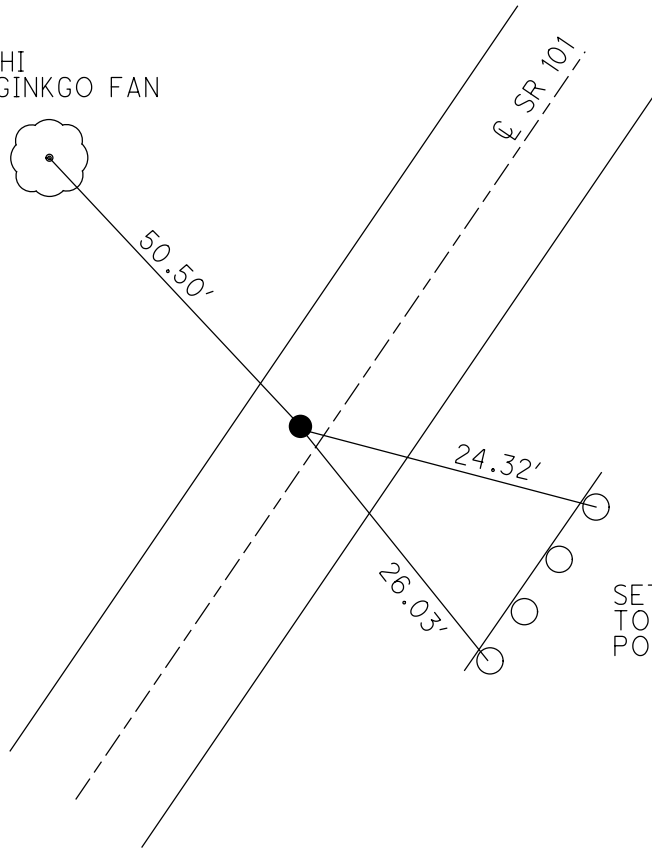
50.50'

Q SR 101

24.32'

26.03'

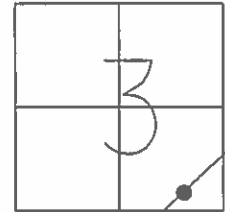
SET SHI'S  
 TOP GR  
 POSTS



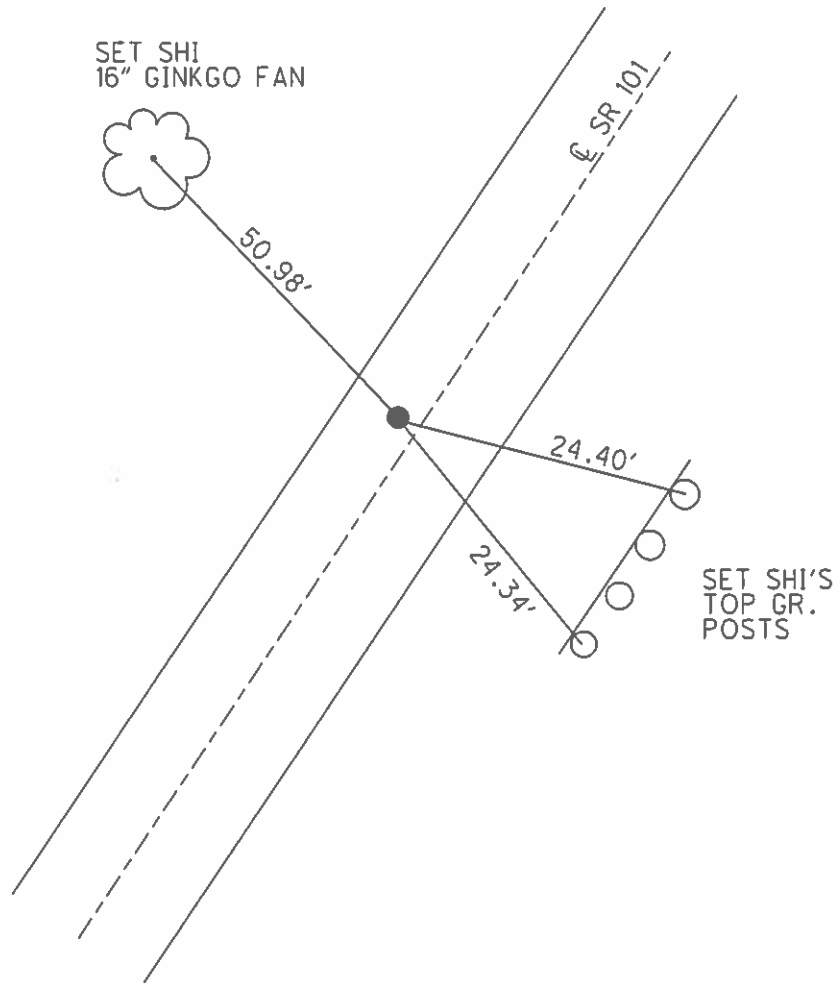
O.D.O.T. DISTRICT 2 SURVEY OFFICE (USE ONLY)

PERSONNEL \_\_\_\_\_ REFERENCE NO. 22 SHEET 23 OF 27  
 NOTES CHENEY DATE 7/21/92 ROUTE SR 101  
 H.C. RIPPLE WEATHER SUNNY COUNTY SENECA  
 R.C. BARBOUR TEMP. 55° TOWNSHIP CLINTON  
 \_\_\_\_\_ SECTION 3  
 \_\_\_\_\_ T 2 N R 15 E

TYPE MONUMENT P.K.NAIL  
 ON SURFACE - ~~BELOW~~ ON \_\_\_\_\_  
 LEFT - ☉ PAV'T - ~~RIGHT~~ 2'  
8' TO LT. EDGE PAVEMENT  
 S.L.M. 266+07  
 GRID: NORTHING: - EASTING: -



RECORD:  
 STA. 24+47  
 R.R. SPIKE ON ☉ R/W  
 ON SURFACE  
 11/22/65  
 SET P.K./WASHER  
 10/1/92



O.D.O.T. DISTRICT 2 SURVEY OFFICE

PERSONNEL

REFERENCE NO. 22

SHEET 22 OF 26

NOTES Cheney

H.C. RIPPLE

R.C. BARBOUR

DATE 7-21-92

WEATHER SUNNY

TEMP. 55°

ROUTE SR#101

COUNTY SENECA

TOWNSHIP CLINTON

SECTION 3

T2 NR 15 E

TYPE MONUMENT PK. ?

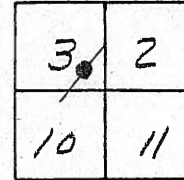
Set  
PK. & WASHER  
10-01-92

ON SURFACE - BELOW yes

LEFT- & PAV'T. - ~~RIGHT~~ 2'

8' TO LT. EDGE PAVEMENT

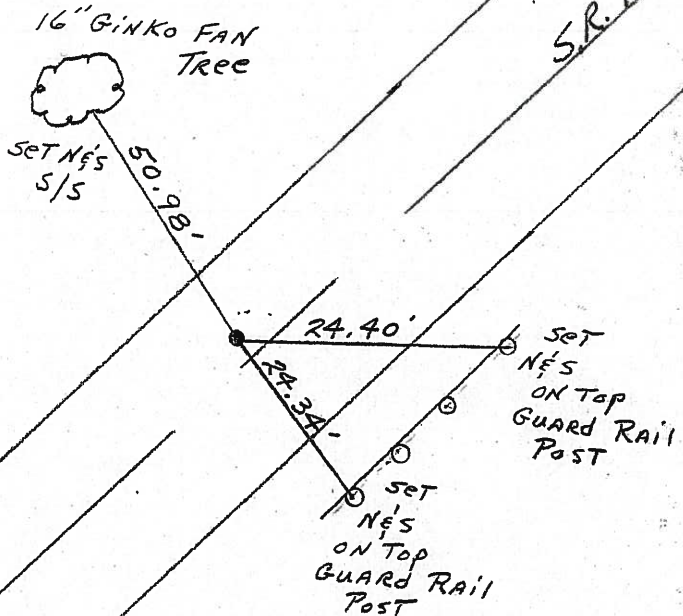
S.L.M. 266+07



Record: 11-22-65  
RR Spk. on & R/W on surface  
STA. 24+47

265+97

Fd LG. RR Spk  
6-7-06  
SV 14



Need to  
Fd/Dig  
02-04-05  
SAH

# O.D.O.T. DISTRICT 2 SURVEY OFFICE

PERSONNEL

REFERENCE NO. 822

SHEET 23 OF 26

NOTES Cheney

H.C. Ripplie

R.C. BARBOUR

DATE 7-21-92

WEATHER SUNNY

TEMP. 55°

ROUTE SR#101

COUNTY SENECA

TOWNSHIP CLINTON

SECTION 3

T2 NR 15 E

TYPE MONUMENT Pk. ? <sup>11-22-65</sup> PK. & WASHER <sup>SET 10-01-92</sup>

ON SURFACE - BELOW yes

LEFT- & PAV'T. - ~~RIGHT~~ 2'

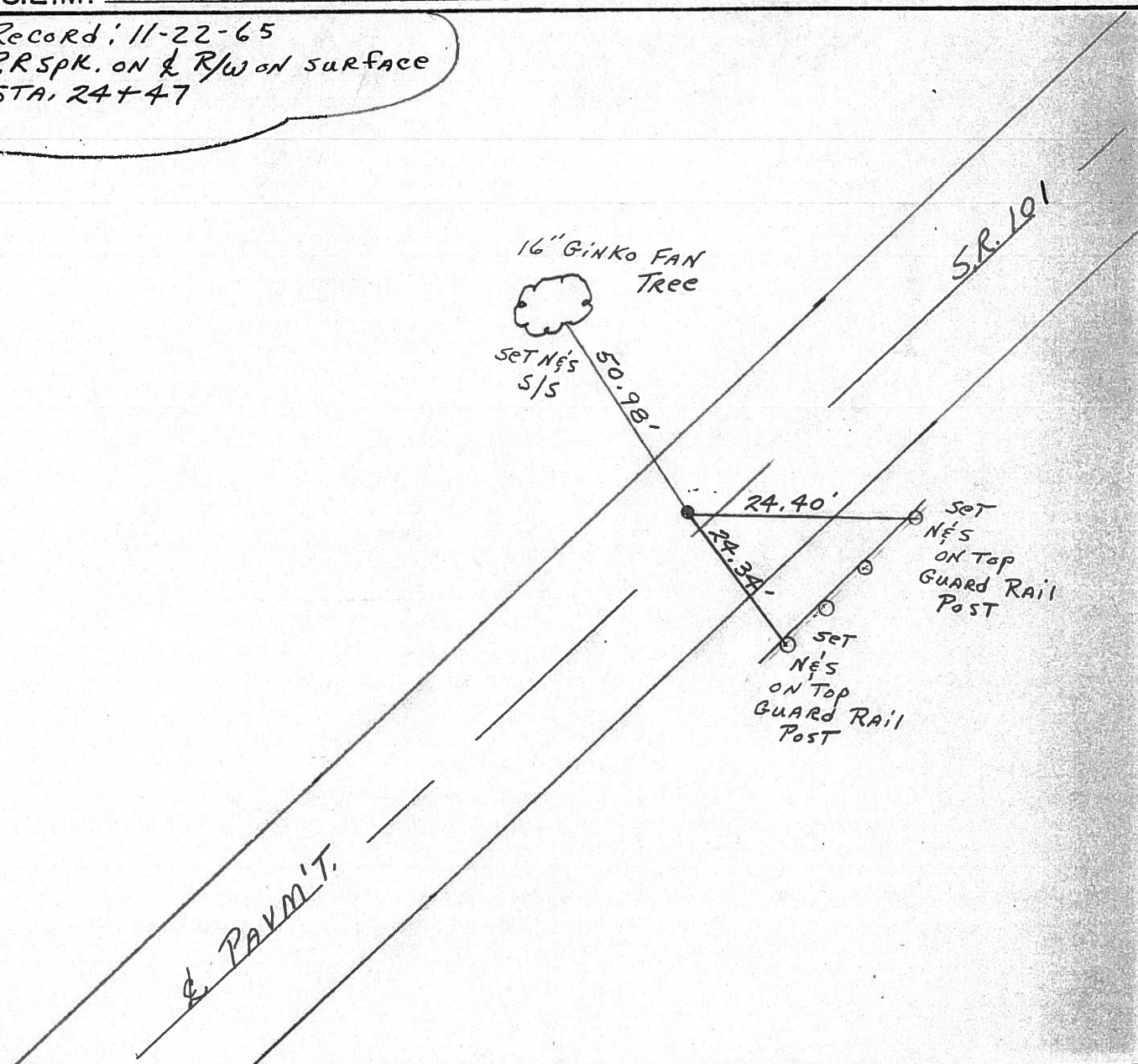
8' TO LT. EDGE PAVEMENT

S.L.M. 266+07

3	2
10	11



Record: 11-22-65  
RR spk. on & R/W on surface  
STA. 24+47





PERSONNEL TITLE PERSONNEL TITLE

Krabill  
Kowalski  
Geyman

COUNTY Seneca DATE

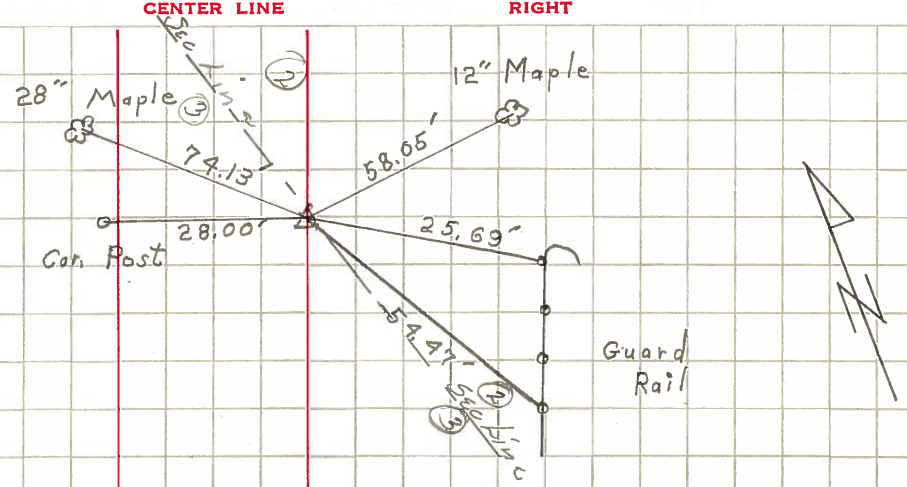
S. R. # 101 WEATHER

SEC. TEMP.

DESCRIPTION LEFT CENTER LINE RIGHT JOB NO.

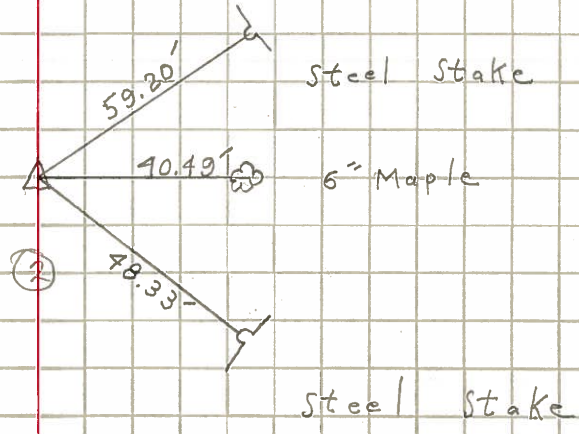
22

STA. 24+47  
R.R. Spike  
# 375



23

STA. 33+72.30  
R.R. Spike  
# 376



24

STA. 37+92.70'  
R.R. Spike  
# 377

