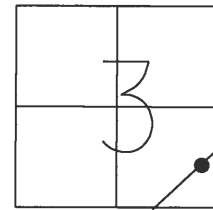


O.D.O.T. DISTRICT 2 SURVEY OFFICE (USE ONLY)

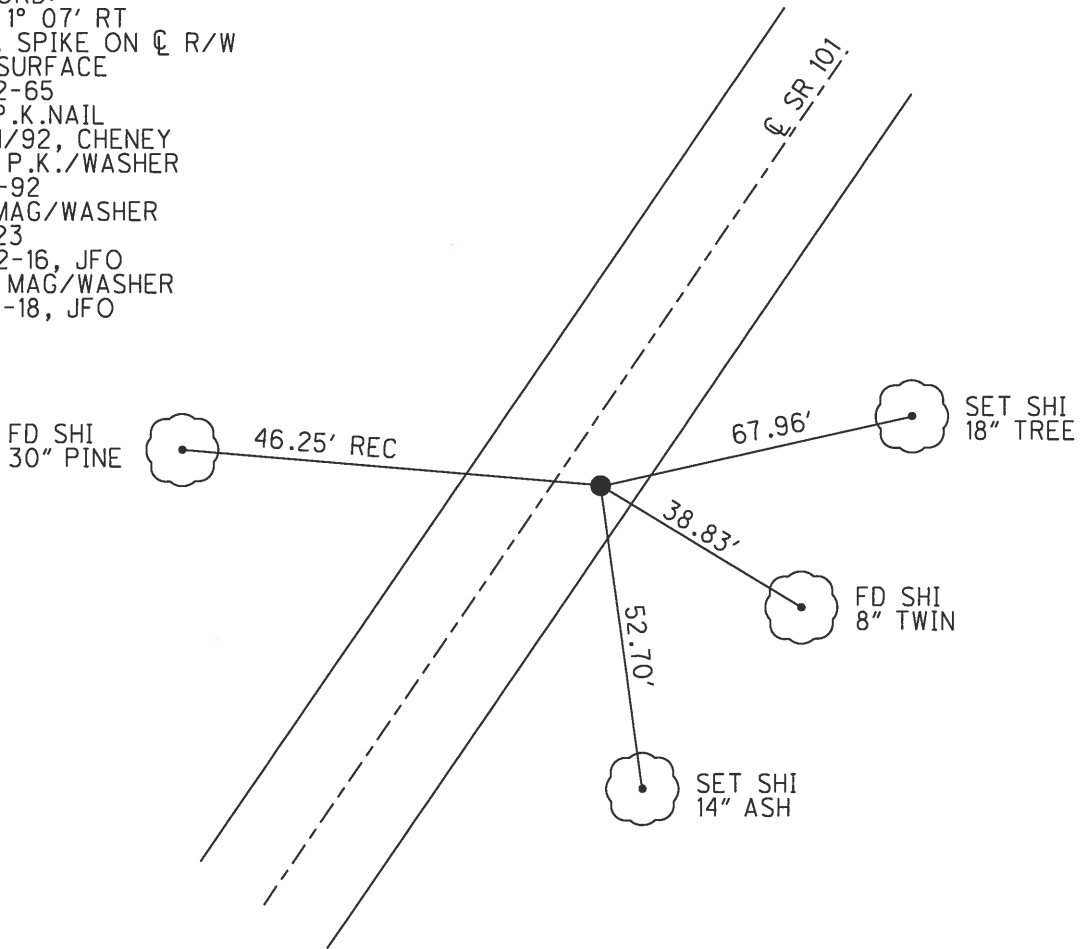
PERSONNEL \_\_\_\_\_ REFERENCE NO. 23 SHEET 24 OF 27  
 NOTES RHOADES DATE 3/23/18 ROUTE SR 101  
 H.C. O'DONNELL WEATHER SUNNY COUNTY SENECA  
 R.C. SEAMAN TEMP. 33° TOWNSHIP CLINTON  
 DWG BY MILLER PID 102817 SECTION 3  
 T 2 N R 15 E

TYPE MONUMENT MAG/WASHER  
 ON SURFACE - ~~BELOW~~ ON  
 OFFSET Q PAVEMENT 5.5' ~~LT~~ : RT  
5.5' TO RT EDGE PAVEMENT  
 STATION: 274+67.2



HORZ. DATUM: NAD83 2011 GEOID: 2012A NAVD88  
 GRID: NORTHING: 544277.514 EASTING: 1800296.451

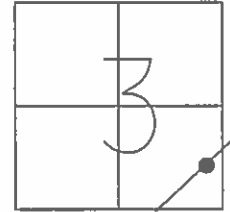
RECORD:  
 $\Delta = 1^\circ 07' RT$   
 R.R. SPIKE ON Q R/W  
 ON SURFACE  
 11-22-65  
 FD P.K. NAIL  
 7/21/92, CHENEY  
 SET P.K./WASHER  
 10-1-92  
 FD MAG/WASHER  
 REF 23  
 10-12-16, JFO  
 SET MAG/WASHER  
 10-9-18, JFO



O.D.O.T. DISTRICT 2 SURVEY OFFICE (USE ONLY)

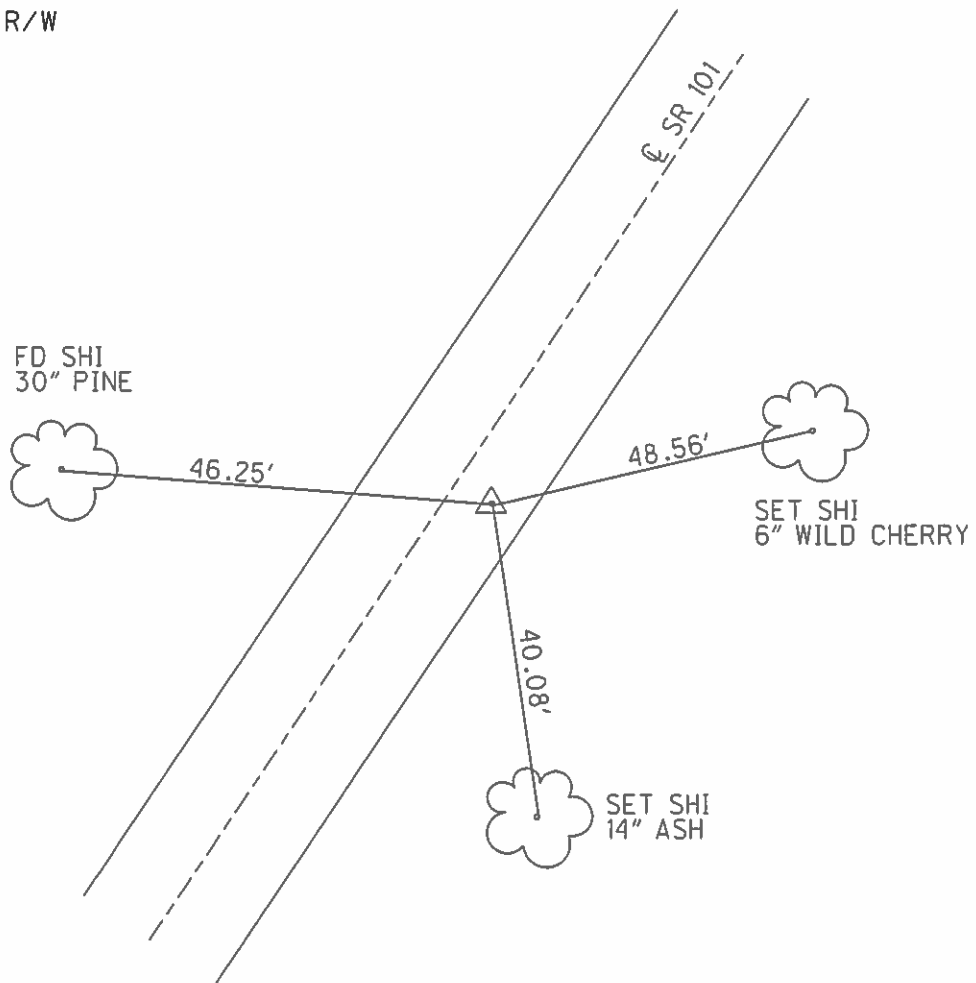
PERSONNEL \_\_\_\_\_ REFERENCE NO. 23 SHEET 24 OF 27  
 NOTES CHENEY DATE 7/21/92 ROUTE SR 101  
 H.C. RIPPLE WEATHER SUNNY COUNTY SENECA  
 R.C. BARBOUR TEMP. 55° TOWNSHIP CLINTON  
 \_\_\_\_\_ SECTION 3  
 \_\_\_\_\_ T 2 N R 15 E

TYPE MONUMENT P.K.NAIL  
 ON SURFACE - ~~BELOW~~ ON \_\_\_\_\_  
~~LEFT~~ - CL PAV'T - RIGHT 5.5'  
5.5' TO RT EDGE PAVEMENT  
 S.L.M. 274+73



GRID: NORTHING: \_\_\_\_\_ EASTING: \_\_\_\_\_

RECORD:  
 $\Delta = 1^{\circ} 07' RT$   
 R.R. SPIKE ON CL R/W  
 ON SURFACE  
 11/22/65  
 SET P.K./WASHER  
 10/1/92



O.D.O.T. DISTRICT 2 SURVEY OFFICE

PERSONNEL

REFERENCE NO. 23

SHEET 23 OF 26

NOTES Cheney

H.C. RIPPLE

R.C. BARBOUR

DATE 7-21-92

WEATHER SUNNY

TEMP. 55°

ROUTE SR# 101

COUNTY SENECA

TOWNSHIP CLINTON

SECTION 3

T2 N R 15 E

TYPE MONUMENT P.K.?

set P.K. & washer  
10-01-92

ON SURFACE - BELOW yes

LEFT- & PAV'T. - RIGHT 5.5'

5.5 TO RT. EDGE PAVEMENT

S.L.M. 274+73

3	2
10	11



Record: 11-22-65  
R.R. SPK ON & R/W ON SURFACE  
STA. 33+72.3  
Δ = 1°-07' RT.

~~274+73~~

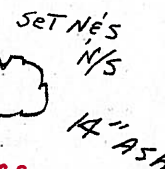
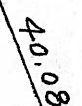
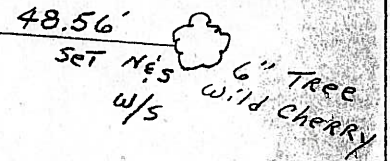
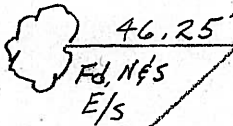
274+61  
Sta #13

SV13

Fd L2 RR  
Spike 3" Down  
6-7-06

SR 101

30" Pine



Fd-Mag  
2-4-05  
SAH

E. PAVM'T.

# O.D.O.T. DISTRICT 2 SURVEY OFFICE

PERSONNEL

REFERENCE NO. 23

SHEET 24 OF 26

NOTES Cheney

H.C. RIPPLE

R.C. BARBOUR

DATE 7-21-92

WEATHER SUNNY

TEMP. 55°

ROUTE SR# 101

COUNTY SENECA

TOWNSHIP CLINTON

SECTION 3

T. 2 N. 15 E.

TYPE MONUMENT P.K. ?

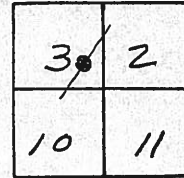
ON SURFACE - BELOW yes

LEFT- & PAV'T. - RIGHT 5.5'

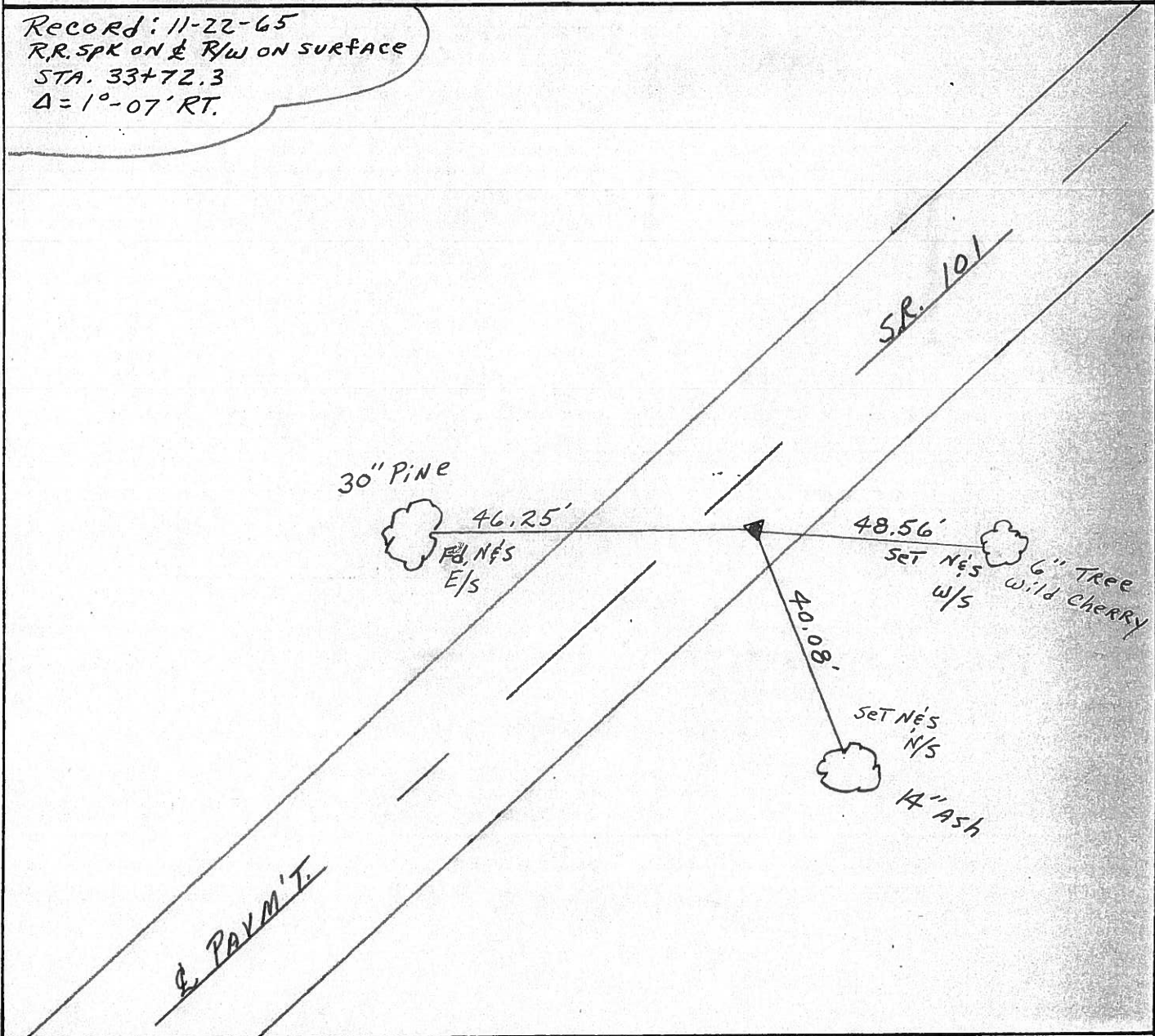
5.5 TO RT. EDGE PAVEMENT

S.L.M. 274+73

set P.K. & washer  
10-01-92



Record: 11-22-65  
R.R. SPK ON & RW ON SURFACE  
STA. 33+72.3  
Δ = 1°-07' RT.





PERSONNEL TITLE PERSONNEL TITLE

COUNTY Seneca

DATE

Krabill

Kowalaski

Geyman

S. R. # 101

WEATHER

SEC.

TEMP.

DESCRIPTION

LEFT

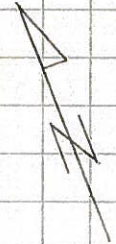
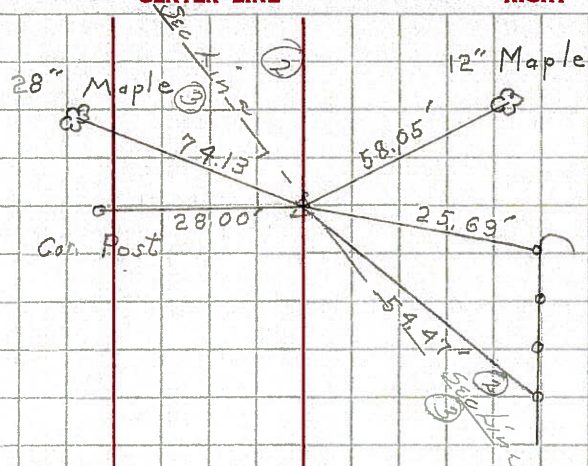
CENTER LINE

RIGHT

JOB NO.

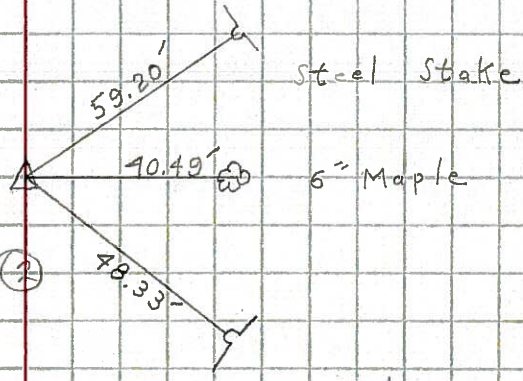
22

STA. 24+47  
R.R. Spike  
# 375



23

STA. 33+72.30  
R.R. Spike  
# 376



24

STA. 37+92.70'  
R.R. Spike  
# 377

