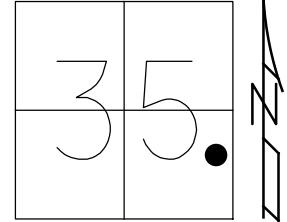


O.D.O.T. DISTRICT 2 SURVEY OFFICE (USE ONLY)

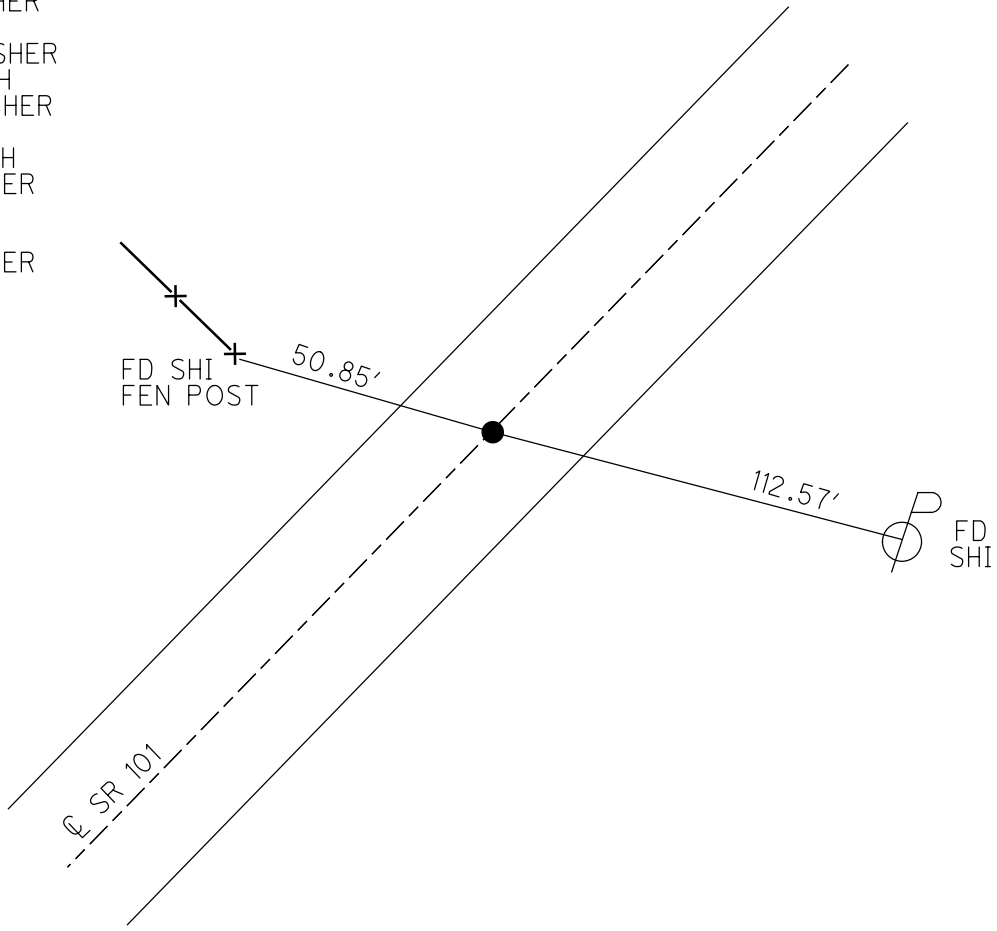
PERSONNEL \_\_\_\_\_ REFERENCE NO. 28 SHEET 2 OF 46  
 NOTES HOMAN DATE 6-30-09 ROUTE SR 101  
 H.C. HOMAN WEATHER CLOUDY COUNTY SENECA  
 R.C. ROUSOS TEMP. 65°F TOWNSHIP PLEASENT  
 DWG BY MAHLER PID 100787 SECTION 35  
 T 3 N R 15 E

TYPE MONUMENT MAG/WASHER  
 ON SURFACE - ~~BELOW~~ ON  
 OFFSET  $\varnothing$  PAVEMENT 1' LT : ~~RT~~  
- TO - EDGE PAVEMENT  
 STATION: 342+58.44



HORIZ.DATUM: NAD83 2011 GEOID: NAVD88-2012A  
 GRID: NORTHING: 549263.893 EASTING: 1804905.756

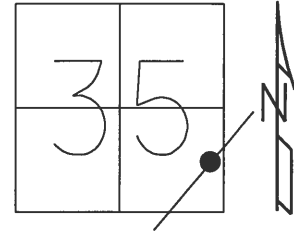
- RECORD:  
 STA.101+00  
 FD. R.R. SPIKE  
 SET P.K./WASHER  
 8-27-90  
 FD P.K./WASHER  
 2-4-05, SAH  
 SET P.K./WASHER  
 6/30/09, DCH  
 SET MAG/WASHER  
 NEWREF28  
 10-05-09, DCH  
 FD MAG/WASHER  
 REF28  
 6-14-16, JFO  
 FD MAG/WASHER  
 REF28  
 10-12-16, JFO  
 9-18-17, JFO



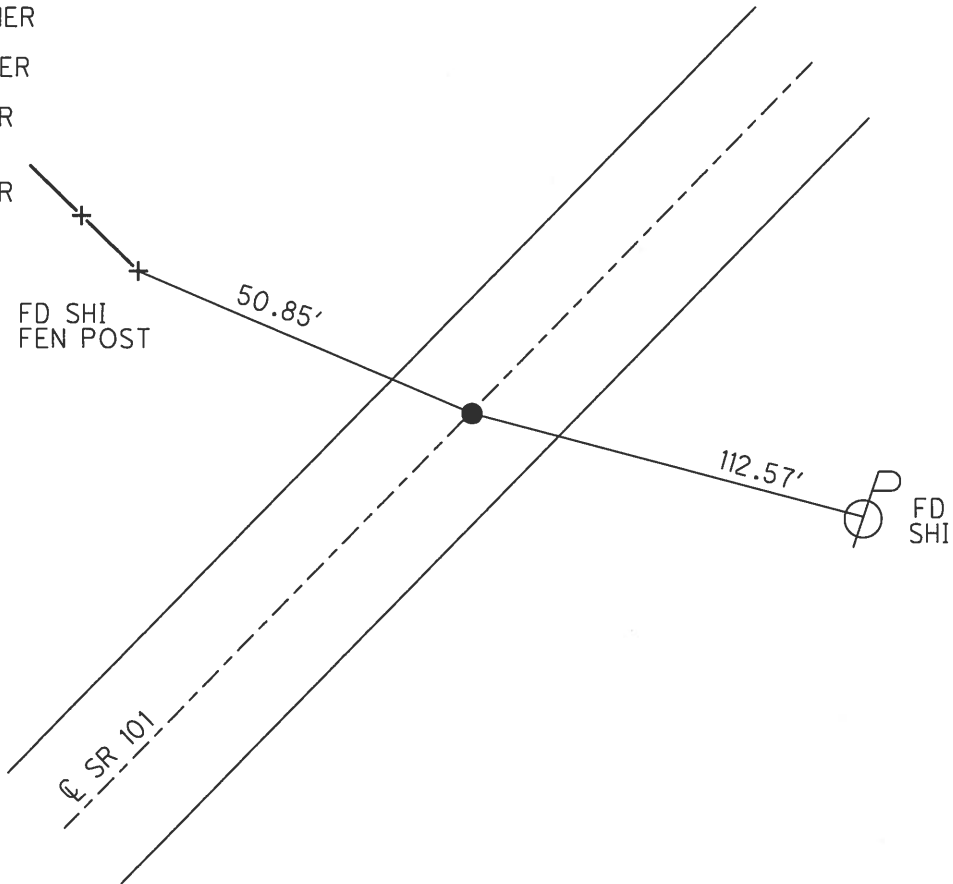
O.D.O.T. DISTRICT 2 SURVEY OFFICE (USE ONLY)

PERSONNEL \_\_\_\_\_ REFERENCE NO. 28 SHEET 2 OF 46  
 NOTES HOMAN DATE 6/30/09 ROUTE SR 101  
 H.C. HOMAN WEATHER CLOUDY COUNTY SENECA  
 R.C. ROUSOS TEMP. 65° TOWNSHIP PLEASANT  
 SECTION 35  
 T 3 N R 15 E

TYPE MONUMENT MAG/WASHER  
 ON SURFACE - ~~BELOW~~ ON  
 LEFT - ☉ PAV'T - ~~RIGHT~~ 1'  
TO EDGE PAVEMENT  
 S.L.M. 342+58.44  
 GRID: NORTHING: 549263.910 EASTING: 1804905.743



RECORD:  
 STA.101+00  
 FD. R.R. SPIKE  
 SET P.K./WASHER  
 8-27-90  
 FD P.K./WASHER  
 2-4-05, SAH  
 SET P.K./WASHER  
 6/30/09, DCH  
 SET MAG/WASHER  
 10-05-09, DCH  
 FD MAG/WASHER  
 REF28  
 6-14-16, JFO  
 FD MAG/WASHER  
 REF28  
 10-12-16, JFO  
 9-18-17, JFO

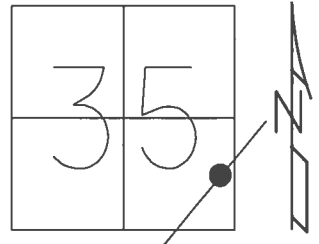


O.D.O.T. DISTRICT 2 SURVEY OFFICE (USE ONLY)

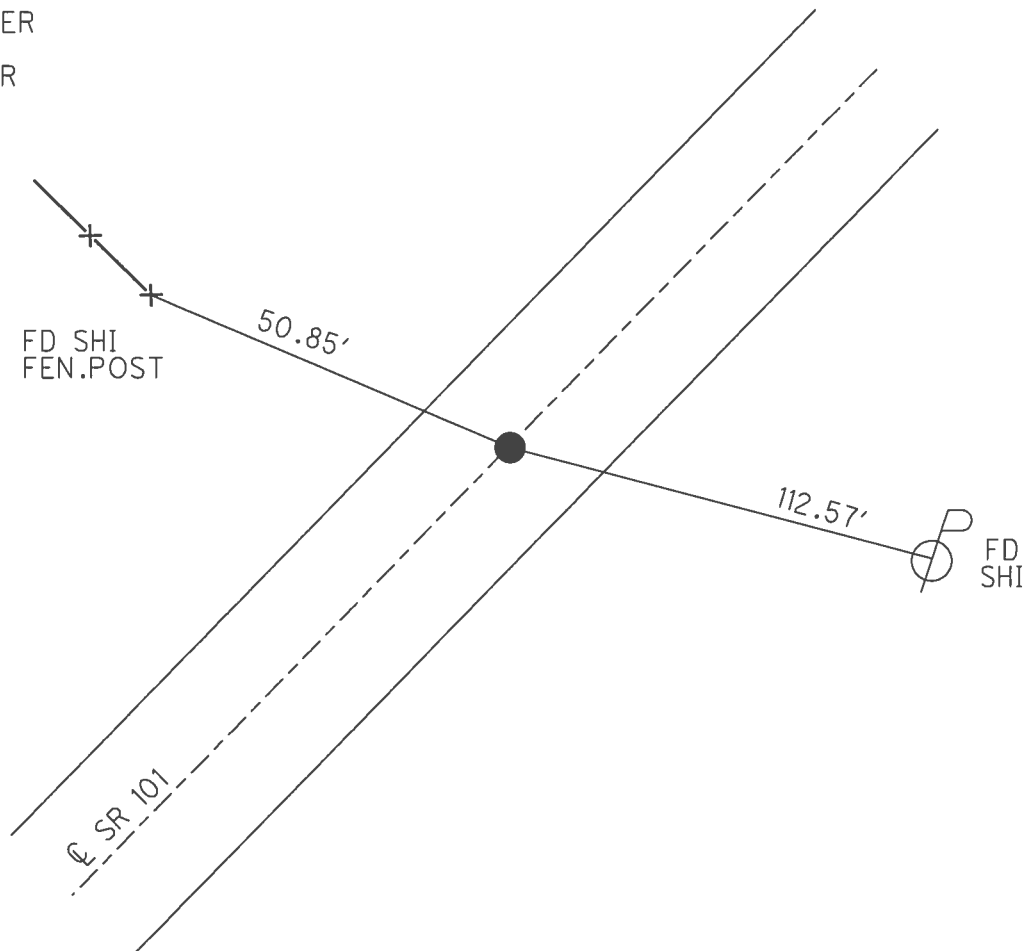
PERSONNEL \_\_\_\_\_ REFERENCE NO. 28 SHEET 2 OF 46  
 NOTES HOMAN DATE 6/30/09 ROUTE SR 101  
 H.C. HOMAN WEATHER CLOUDY COUNTY SENECA  
 R.C. ROUSOS TEMP. 65° TOWNSHIP PLEASANT  
 \_\_\_\_\_ SECTION 35  
 \_\_\_\_\_ T 3 N R 15 E

TYPE MONUMENT P.K./WASHER  
 ON SURFACE - ~~BELOW~~ ON \_\_\_\_\_  
 LEFT - ☉ PAV'T - ~~RIGHT~~ 1'  
 \_\_\_\_\_ TO \_\_\_\_\_ EDGE PAVEMENT  
 S.L.M. 342+57

GRID: NORTHING: 549263.893 EASTING: 1804905.756



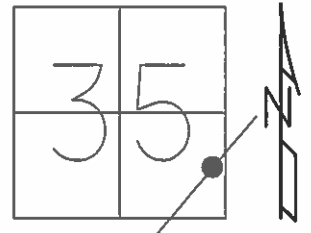
RECORD:  
 STA.101+00  
 FD. R.R. SPIKE  
 SET P.K./WASHER  
 8/27/90  
 FD P.K./WASHER  
 2/4/05, SAH  
 SET MAG/WASHER  
 10-05-09, DH  
 FD MAG/WASHER  
 REF28  
 6/14/16, JFO  
 UNCOVERED  
 9/18/17, JFO



**O.D.O.T. DISTRICT 2 SURVEY OFFICE (USE ONLY)**

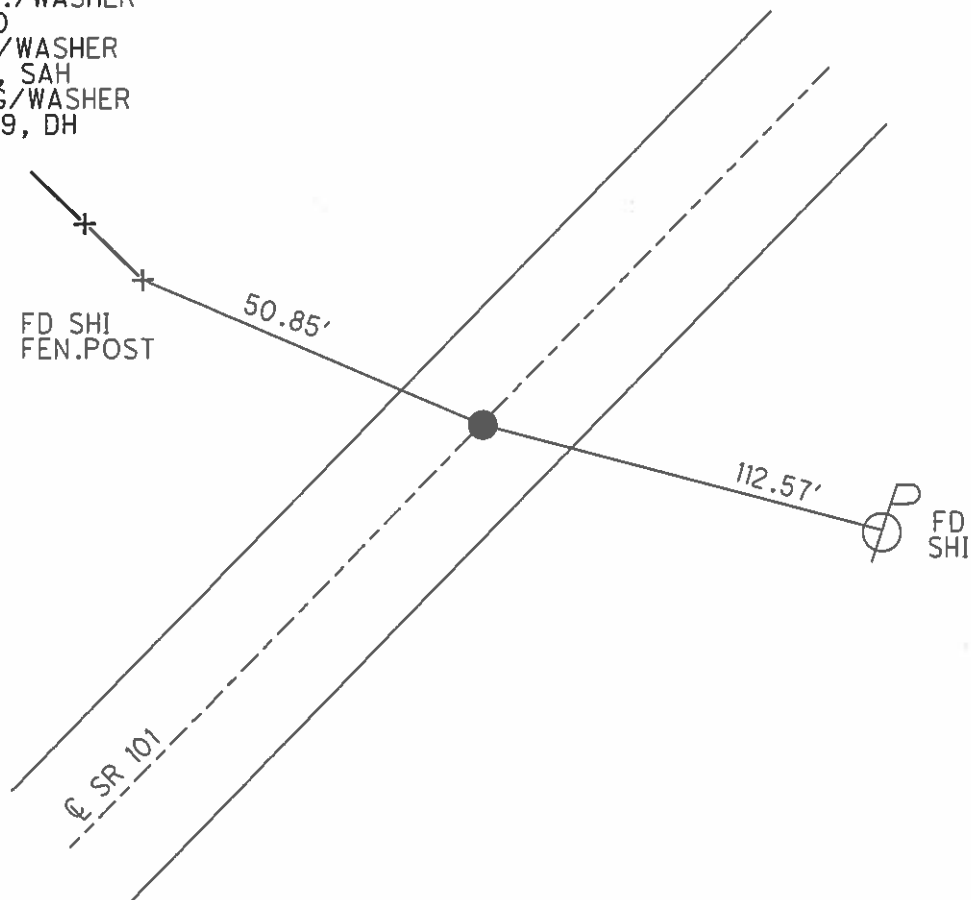
PERSONNEL \_\_\_\_\_ REFERENCE NO. 28 SHEET 2 OF 46  
 NOTES HOMAN DATE 6-30-09 ROUTE SR 101  
 H.C. HOMAN WEATHER CLOUDY COUNTY SENECA  
 R.C. ROUSOS TEMP. 65° TOWNSHIP PLEASANT  
 \_\_\_\_\_ SECTION 35  
 \_\_\_\_\_ T 3 N R 15 E

TYPE MONUMENT P.K./WASHER  
 ON SURFACE - ~~BELOW~~ ON  
 LEFT - ☉ PAV'T - ~~RIGHT~~ 1'  
 \_\_\_\_\_ TO \_\_\_\_\_ EDGE PAVEMENT  
 S.L.M. 342+57



GRID: NORTHING: 549263.935 EASTING: 1804905.698

RECORD:  
 STA. 101+00  
 FD. R.R. SPIKE  
 SET P.K./WASHER  
 8/27/90  
 FD P.K./WASHER  
 2/4/05, SAH  
 SET MAG/WASHER  
 10-05-09, DH



O.D.O.T. DISTRICT 2 SURVEY OFFICE

PERSONNEL

REFERENCE NO. 28

SHEET 2 OF 41

NOTES RIPPLE

H.C. BARBOUR

R.C. \_\_\_\_\_

DATE 8/27/90

WEATHER SUNNY

TEMP. 73°

ROUTE SR#101

COUNTY SENeca

TOWNSHIP PLEASANT

SECTION 35

T3 N R 15 E

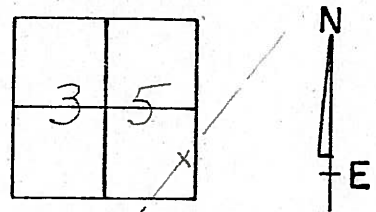
TYPE MONUMENT Set. P.K. & Washer

ON SURFACE - BELOW R.R. Spike

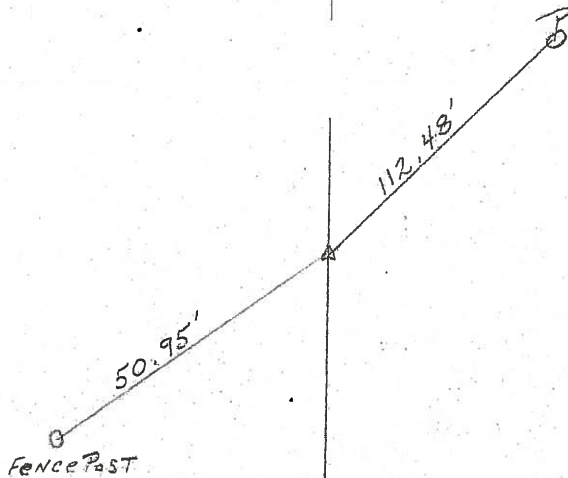
LEFT- & PAV'T. - RIGHT L.L.T. & PAV'T

TO \_\_\_\_\_ EDGE PAVEMENT

S.L.M. \_\_\_\_\_



342+57



Fd

02-04-05

SAH

± R/W SR#101

O.D.O.T. DISTRICT 2 SURVEY OFFICE

PERSONNEL

REFERENCE NO. 28

SHEET 2 OF 41

NOTES Ripple

H.C. Barbour

R.C. \_\_\_\_\_

DATE 8/27/90

WEATHER SUNNY

TEMP. 73°

ROUTE SR#101

COUNTY Seneca

TOWNSHIP Pleasant

SECTION 35

T3 N R 15 E

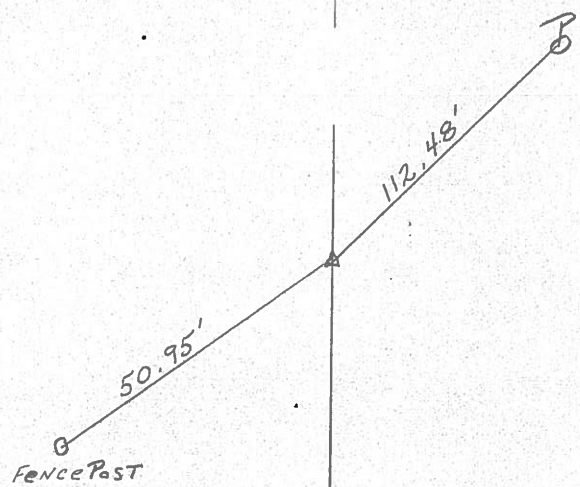
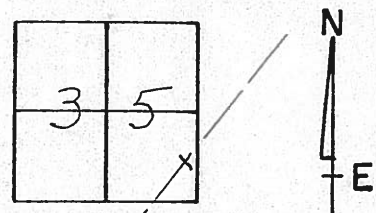
TYPE MONUMENT Set. P.K. & Washer

ON SURFACE - BELOW R.R. Spike

LEFT - € PAV'T. - RIGHT 1' LT. & PAV'T

TO \_\_\_\_\_ EDGE PAVEMENT

S.L.M. \_\_\_\_\_



101+00

€ R/W SR#101

County Seneca S.R. 101

Date 6-26-79

Township Pleasant

Weather Fair

Section 35

Temp. 65°

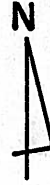
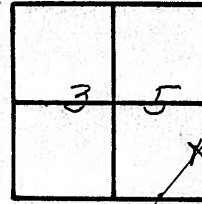
T<sub>3</sub>N, R<sub>15</sub>E

Personnel Schneider

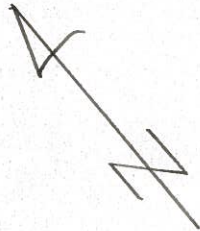
Mosser

Barbour

(28)



~~# 34~~

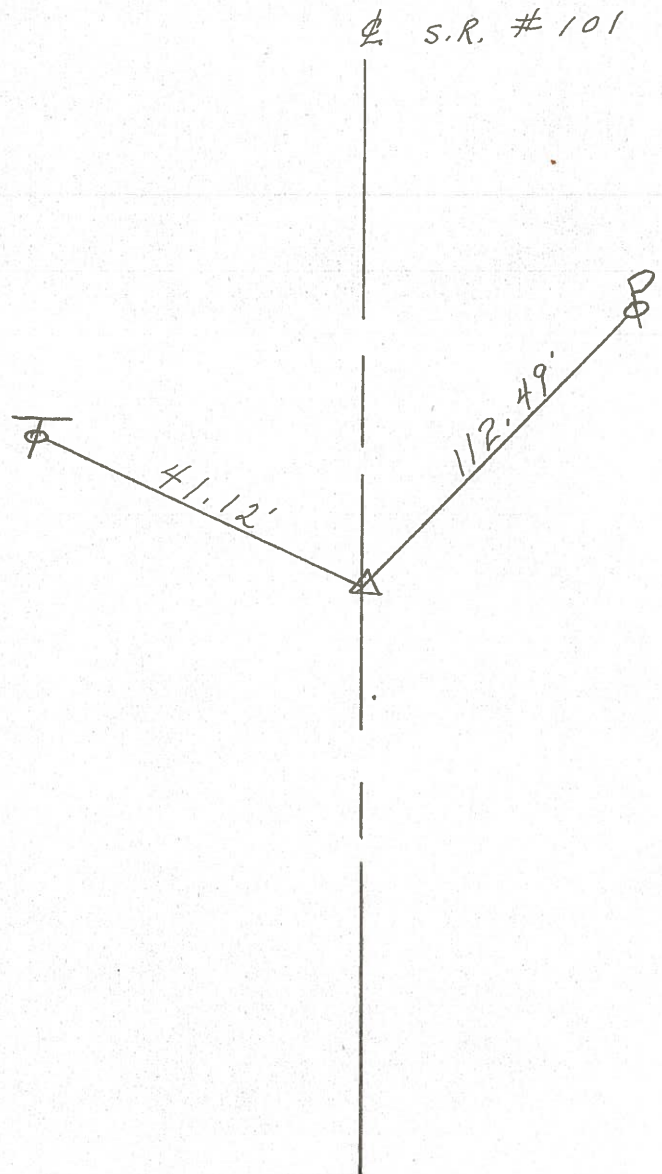


101+00

R.R. spk. on  $\Phi$  R/W

Reset P. K. Nail

$\Delta = 0^\circ - 2' \text{ LT.}$



PERSONNEL TITLE PERSONNEL TITLE

COUNTY Seneca DATE 11-23-69

S. R. # 101 WEATHER

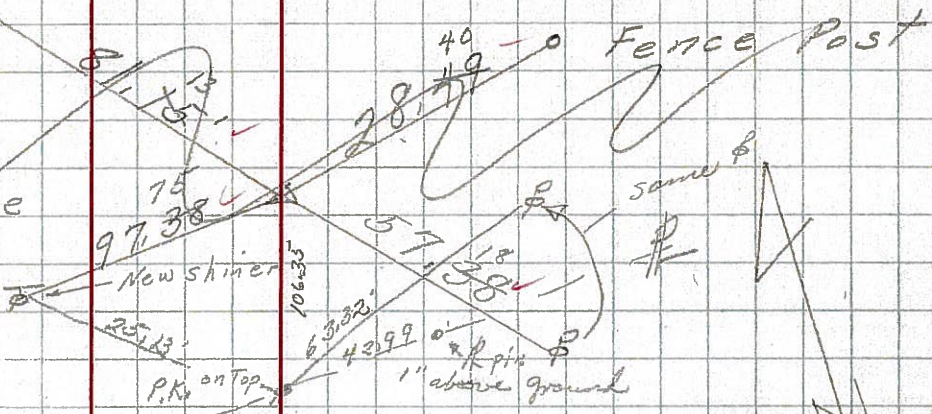
SEC TEMP 50°

DESCRIPTION LEFT CENTER LINE RIGHT JOB NO.

29

Ties Good 2/24/69  
Sta. 115+72  
R.R. spt. on & R/W  
1/2" below surface

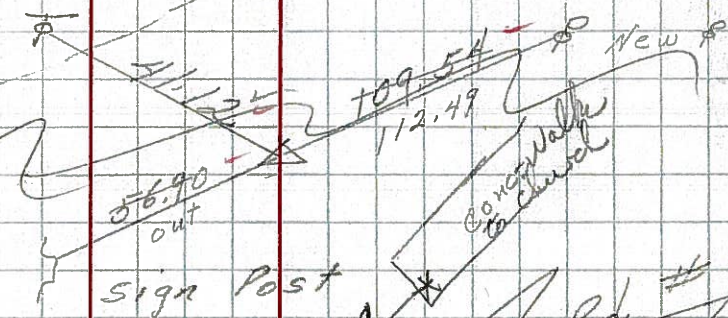
381  
8477



28

Ties Good 2/24/69  
Sta. 191+00  
R.R. spt. on & R/W  
1/2" below surface

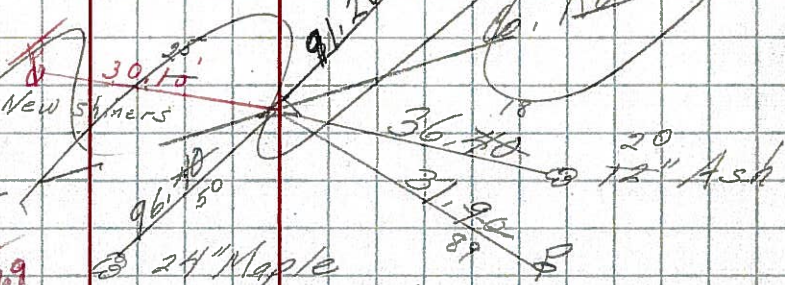
380 8476



27

Ties Good - 2/24/69  
Sta. 77+00  
P.K. R.R. spt. on & R/W  
1" & 8" below surface

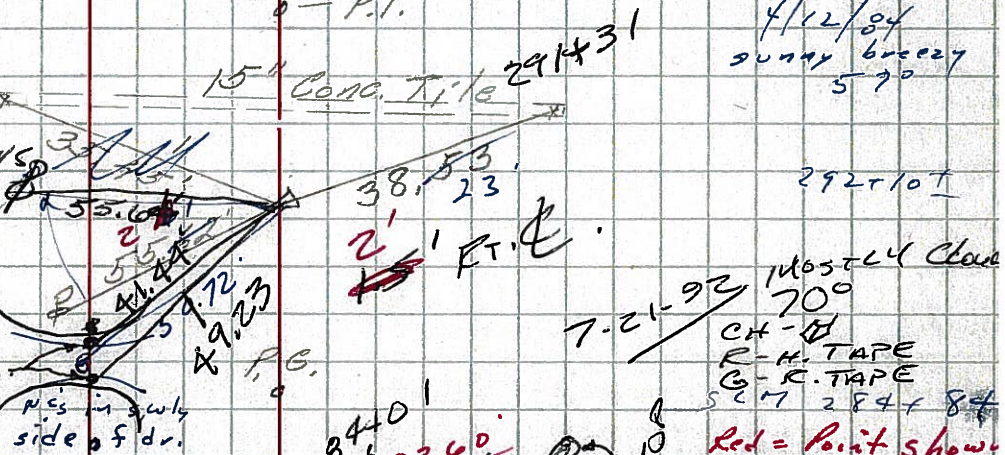
379  
8475



8935  
3792  
1283  
717

Ties Good 2/24/69  
Sta. 49+35.6  
R.R. spt. on & R/W  
on surface  
2' R/W & P.T.

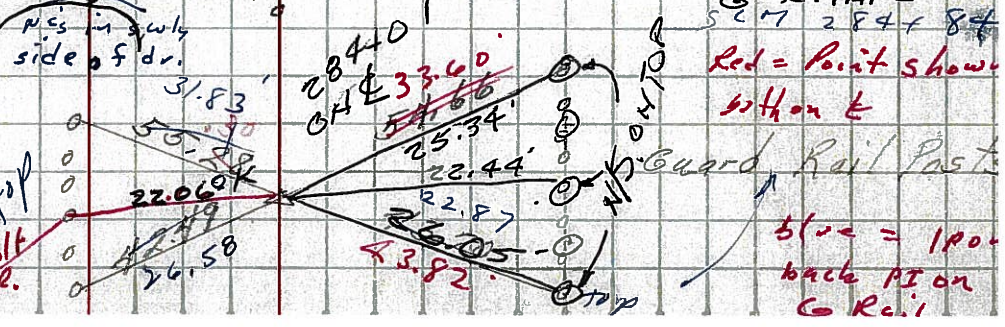
378  
8474



26

Found R.R. spt.  
on surface  
Found 2-24-69

8492



25

Found R.R. spt.  
on surface



4/12/84  
sunny breezy  
570

292+107  
mostly clear  
700  
CH - H  
R - H TAPE  
G - R TAPE  
SEM 2847 84

Red = Point shown  
both on &  
blue = 190+  
back PI on  
G Rail

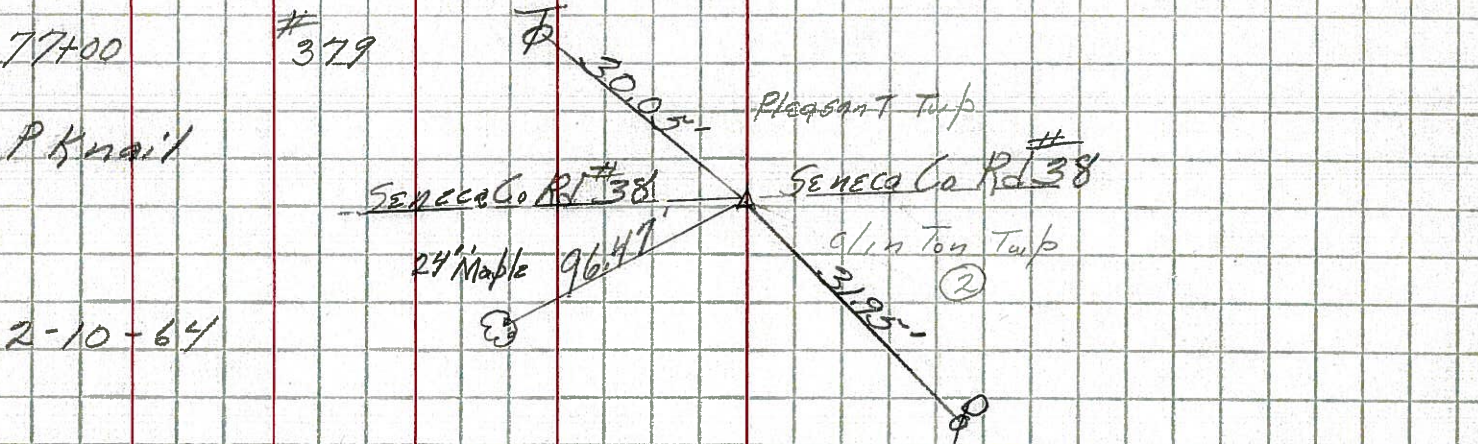
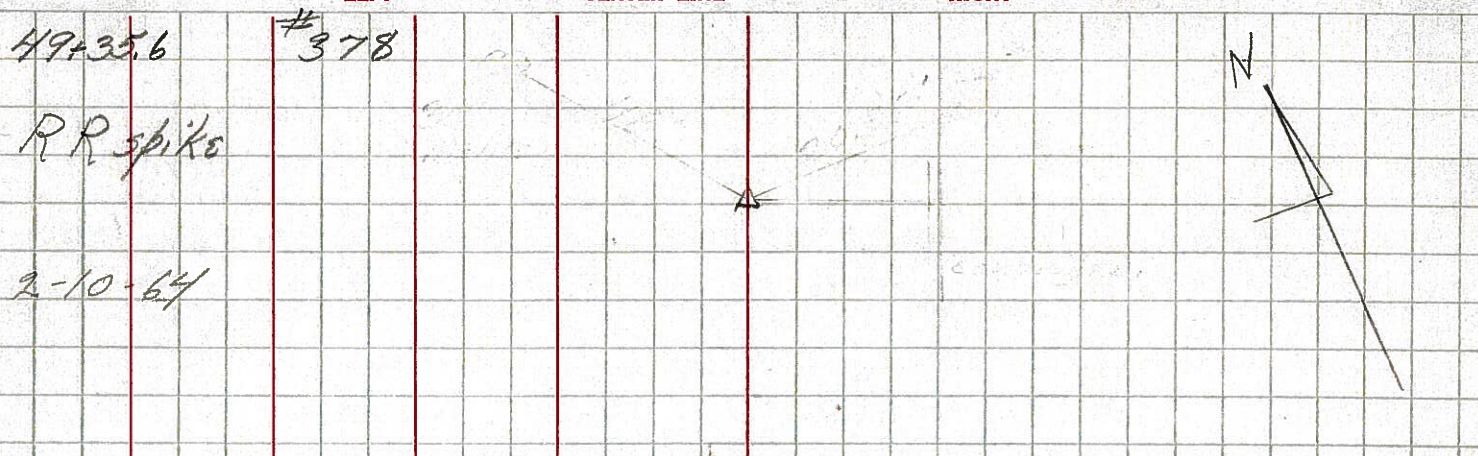


LD-1 (2X-C-49)

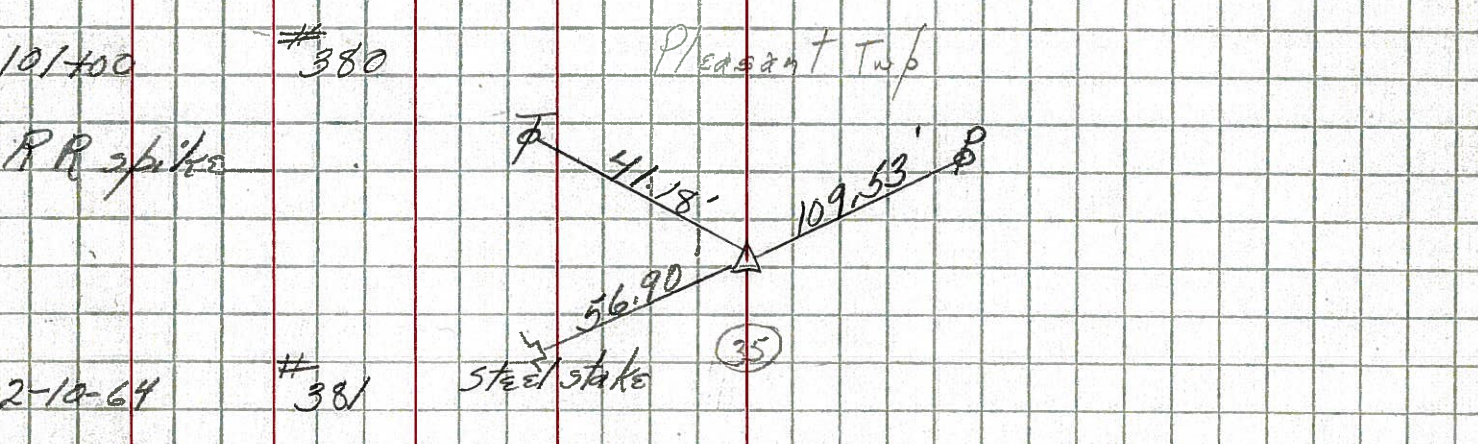
PERSONNEL	TITLE	PERSONNEL	TITLE	COUNTY	DATE	WEATHER	TEMP.
F Krabill				Seneca			
Kowaleski							
Geyman				S. R. 101			
Bruggman				SEC.			

DESCRIPTION	LEFT	CENTER LINE	RIGHT	JOB NO.
-------------	------	-------------	-------	---------

27



28



29

