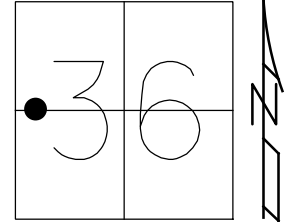


O.D.O.T. DISTRICT 2 SURVEY OFFICE (USE ONLY)

PERSONNEL _____ REFERENCE NO. 29 SHEET 3 OF 46
 NOTES HOMAN DATE 7-14-09 ROUTE SR 101
 H.C. HOMAN WEATHER SUNNY COUNTY SENECA
 R.C. ROUSOS TEMP. 75°F TOWNSHIP PLEASENT
 SECTION 36
 DWG BY MAHLER PID 100787 T 3 N R 15 E

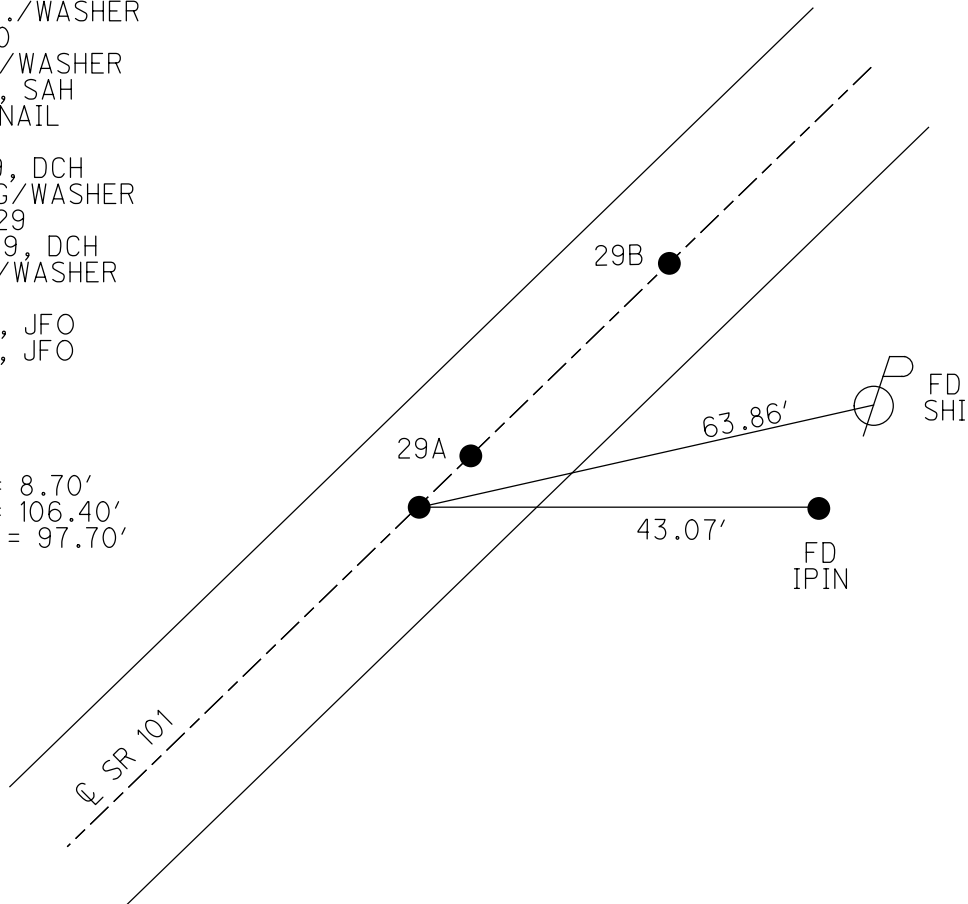
TYPE MONUMENT P.K.NAIL
 ON SURFACE - ~~BELOW~~ ON
 OFFSET \odot PAVEMENT ON LT : RT
- TO - EDGE PAVEMENT
 STATION: 356+20



HORZ.DATUM: NAD83 2011 GEOID: NAVD88-2012A
 GRID: NORTHING: 550274.188 EASTING: 180531.862

RECORD:
 STA.115+72
 FD. P.K./WASHER
 ATOP R.R. SPIKE
 SET P.K./WASHER
 8/27/90
 FD P.K./WASHER
 2/4/05, SAH
 FD P.K.NAIL
 REF29
 7/14/09, DCH
 SET MAG/WASHER
 NEWREF29
 10-08-09, DCH
 FD MAG/WASHER
 REF29
 6/14/16, JFO
 9/18/17, JFO

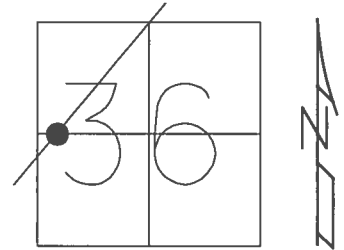
DIST.
 29-29A = 8.70'
 29-29B = 106.40'
 29A-29B = 97.70'



O.D.O.T. DISTRICT 2 SURVEY OFFICE (USE ONLY)

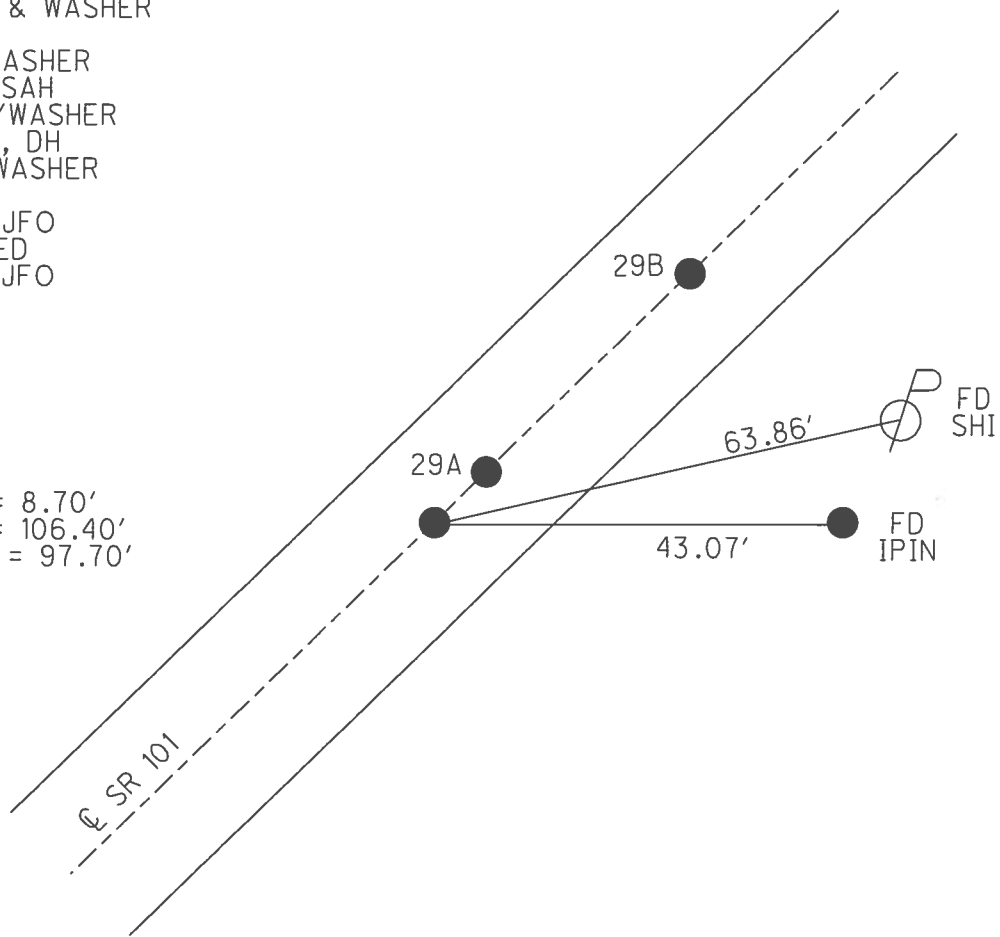
PERSONNEL _____ REFERENCE NO. 29 SHEET 3 OF 46
 NOTES HOMAN DATE 7/14/09 ROUTE SR 101
 H.C. HOMAN WEATHER SUNNY COUNTY SENECA
 R.C. ROUSOS TEMP. 75° TOWNSHIP PLEASANT
 _____ SECTION 36
 _____ T 3 N R 15 E

TYPE MONUMENT P.K.NAIL
 ON SURFACE - ~~BELOW~~ ON
 LEFT - ☉ PAV'T - RIGHT ON
 TO EDGE PAVEMENT
 S.L.M. 356+20
 GRID: NORTHING: 550274.188 EASTING: 1805831.862



RECORD:
 STA. 115+72
 FD. P.K./WASHER
 A TOP R.R. SPIKE
 SET P.K. & WASHER
 8/27/90
 FD P.K/WASHER
 2/4/05, SAH
 SET MAG/WASHER
 10-08-09, DH
 FD MAG/WASHER
 REF29
 6/14/16, JFO
 UNCOVERED
 9/18/17, JFO

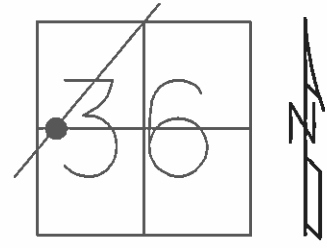
DIST.
 29-29A = 8.70'
 29-29B = 106.40'
 29A-29B = 97.70'



O.D.O.T. DISTRICT 2 SURVEY OFFICE (USE ONLY)

PERSONNEL	REFERENCE NO.	<u>29</u>	SHEET	<u>3</u>	OF	<u>46</u>
NOTES	DATE	<u>7/14/09</u>	ROUTE	<u>SR 101</u>		
H.C.	WEATHER	<u>SUNNY</u>	COUNTY	<u>SENECA</u>		
R.C.	TEMP.	<u>75°</u>	TOWNSHIP	<u>PLEASENT</u>		
			SECTION	<u>36</u>		
			T	<u>3</u>	N	R <u>15</u> E

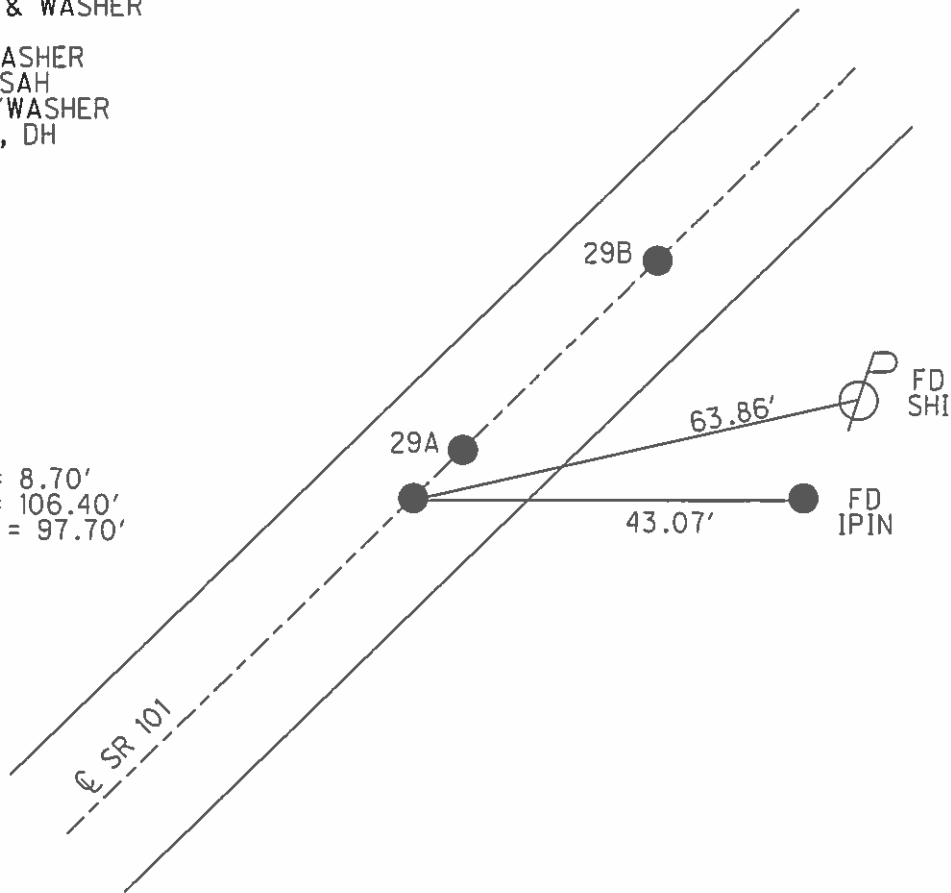
TYPE MONUMENT P.K.NAIL
 ON SURFACE - ~~BELOW~~ ON
 LEFT - ☉ PAV'T - RIGHT ON
- TO - EDGE PAVEMENT
 S.L.M. 356+20



GRID: NORTHING: 550267.595 EASTING: 1805826.203

RECORD:
 STA. 115+72
 FD. P.K./WASHER
 A TOP R.R. SPIKE
 SET P.K. & WASHER
 8/27/90
 FD P.K/WASHER
 2/4/05, SAH
 SET MAG/WASHER
 10-08-09, DH

DIST.
 29-29A = 8.70'
 29-29B = 106.40'
 29A-29B = 97.70'



O.D.O.T. DISTRICT 2 SURVEY OFFICE

PERSONNEL _____

REFERENCE NO. 29

SHEET 3 OF 41

NOTES Ripple

H.C. BARBOUR

DATE 8/27/90

ROUTE S.R.#101

R.C. _____

WEATHER SUNNY

COUNTY Seneca

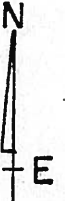
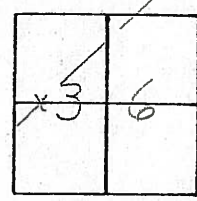
TEMP. 73°

TOWNSHIP Pleasant

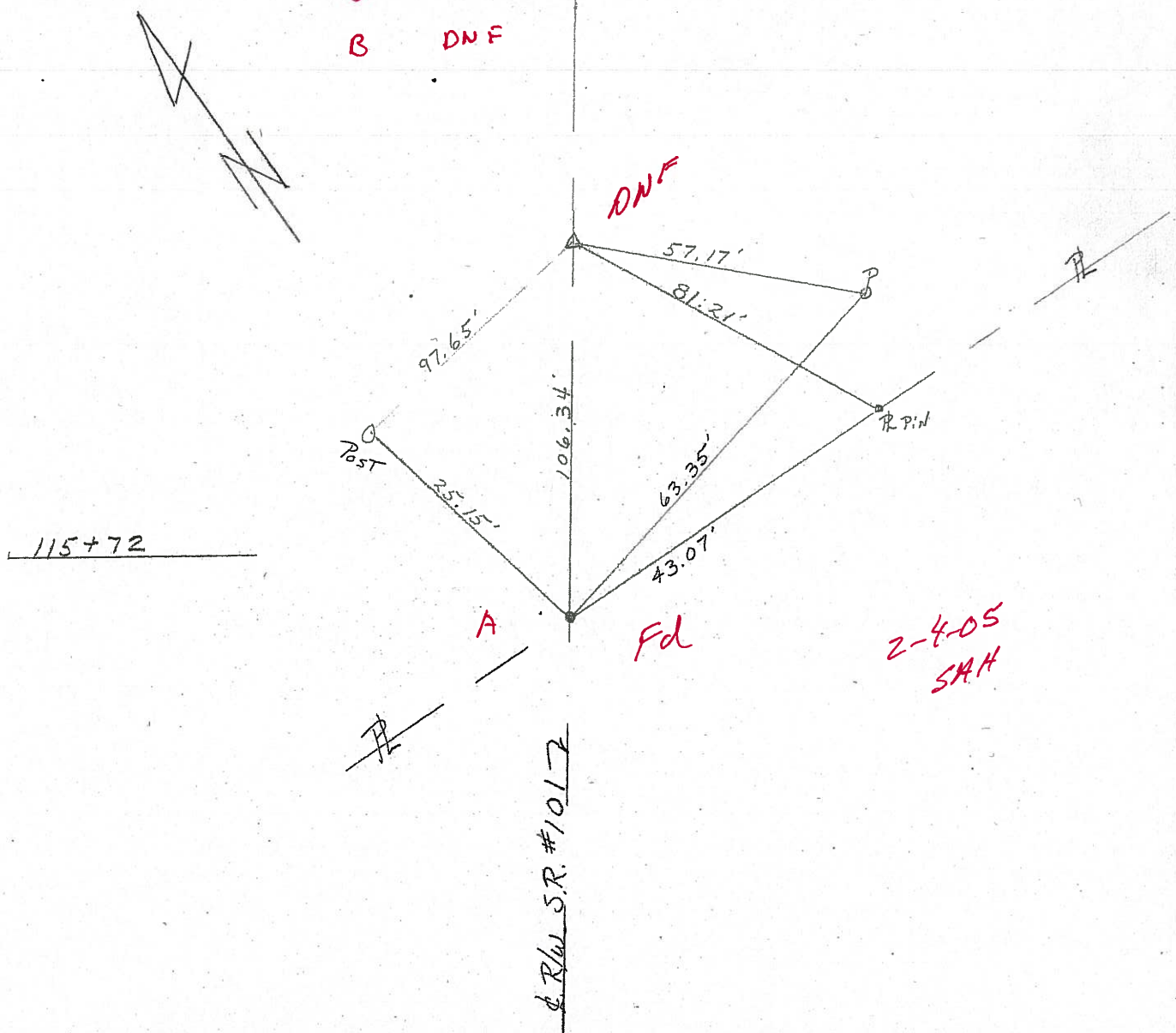
SECTION 36

T 3 N R 15 E

TYPE MONUMENT Set P.K. & Washer
 ON SURFACE - BELOW PK Nail at Top R/R spike
 LEFT - ☉ PAV'T. - RIGHT ☉
 _____ TO _____ EDGE PAVEMENT
 S.L.M. _____



A 356+20
B DNF



O.D.O.T. DISTRICT 2 SURVEY OFFICE

PERSONNEL _____

REFERENCE NO. 29

SHEET 3 OF 41

NOTES Ripple

H.C. BARBOUR

R.C. _____

DATE 8/27/90

WEATHER SUNNY

TEMP. 73°

ROUTE S.R.# 101

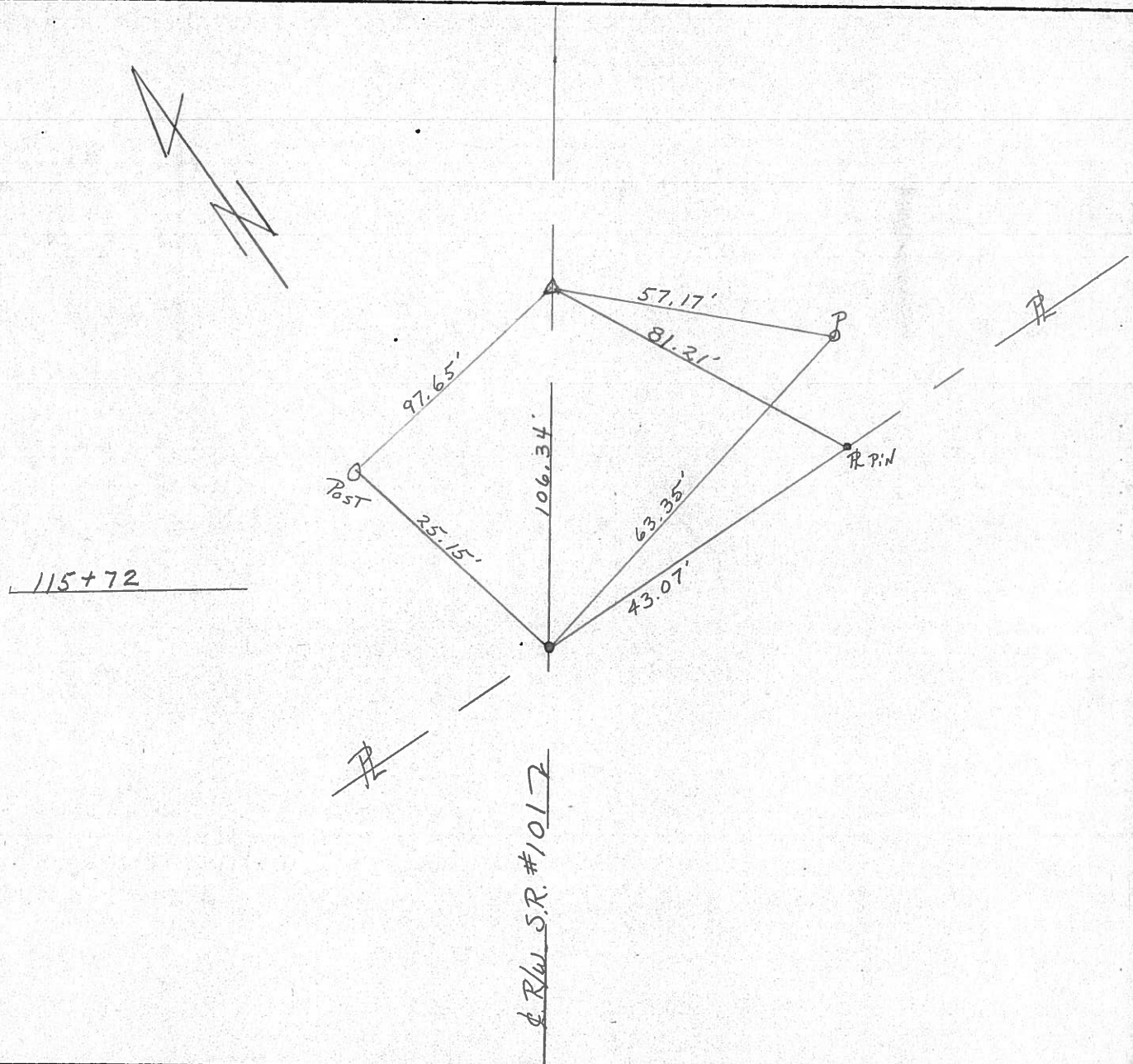
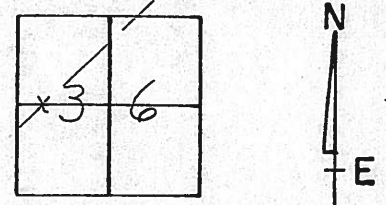
COUNTY Seneca

TOWNSHIP Pleasant

SECTION 36

T 3 N R 15 E

TYPE MONUMENT Set P.K. & Washer
 ON SURFACE - BELOW P.K. Nail A Top R/R spike
 LEFT - ☉ PAV'T. - RIGHT ☉
 _____ TO _____ EDGE PAVEMENT
 S.L.M. _____



County Seneca S.R. 101

Date 6-26-79

Township Pleasant

Weather Fair

Section 36

Temp. 65°

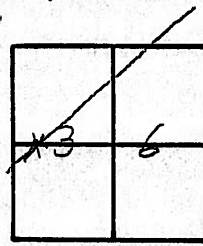
T 3 N, R 15 E

Personnel Schneider

Mosser

Barbour

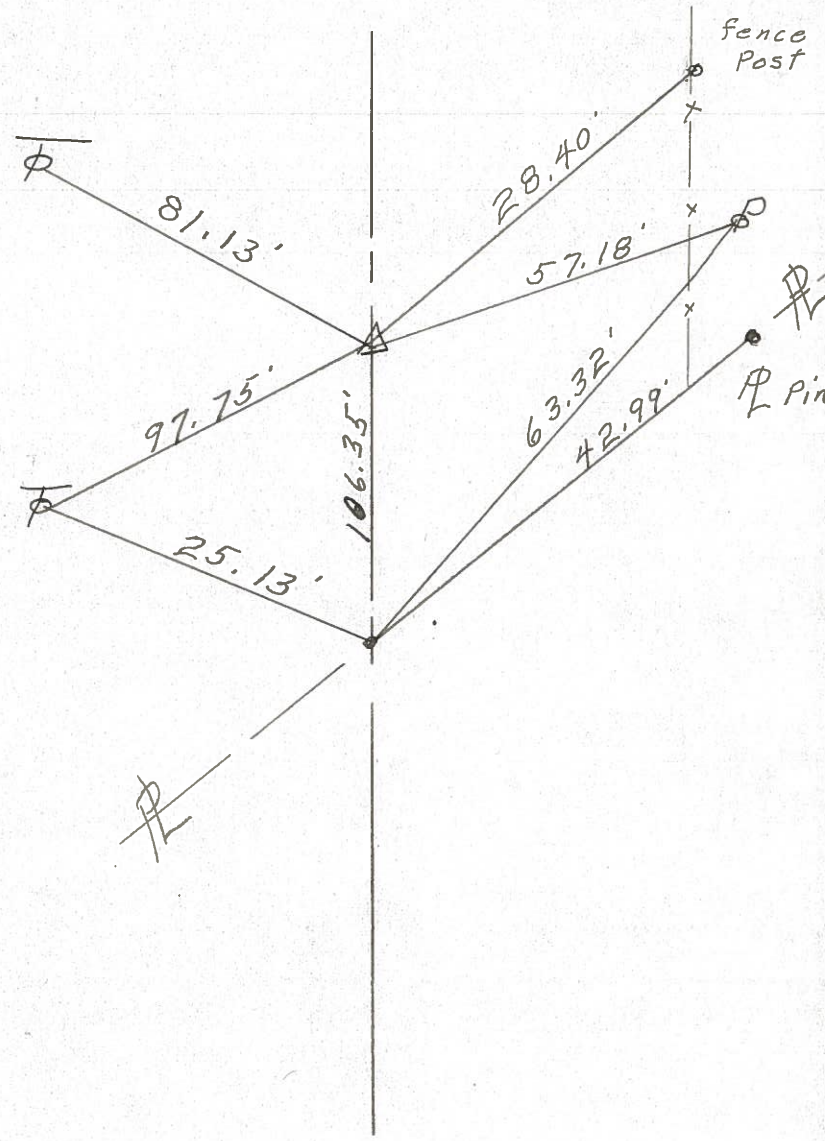
(29)



~~#35~~



P.I.
115 + 72
R.R. Spk. on E R/W
Reset P. K. Nail
 $\Delta = 0^{\circ} - 18' \text{ LT.}$



PERSONNEL TITLE PERSONNEL TITLE

COUNTY Seneca DATE

S. R. # 101 WEATHER

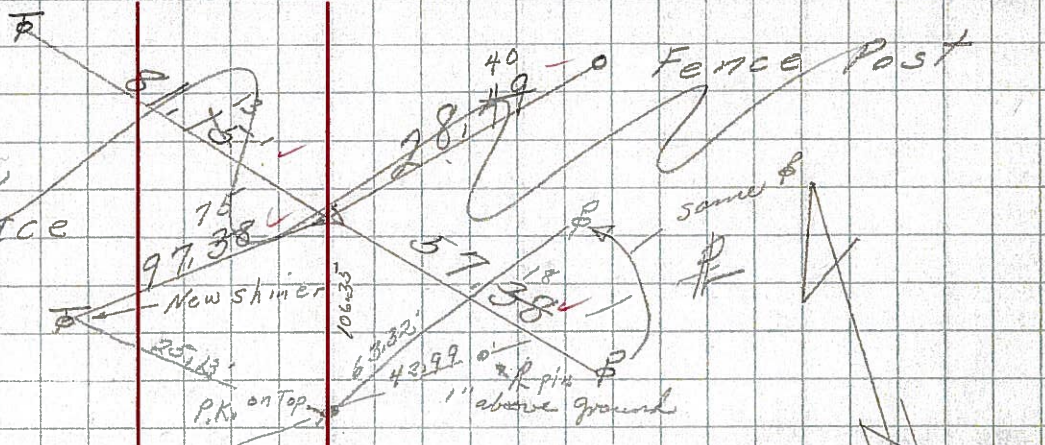
SEC TEMP 50°

DESCRIPTION LEFT CENTER LINE RIGHT JOB NO.

29

Ties Good 2/24/69
Sta. 115+72
R.R. spt. on & R/W
1/2" below surface

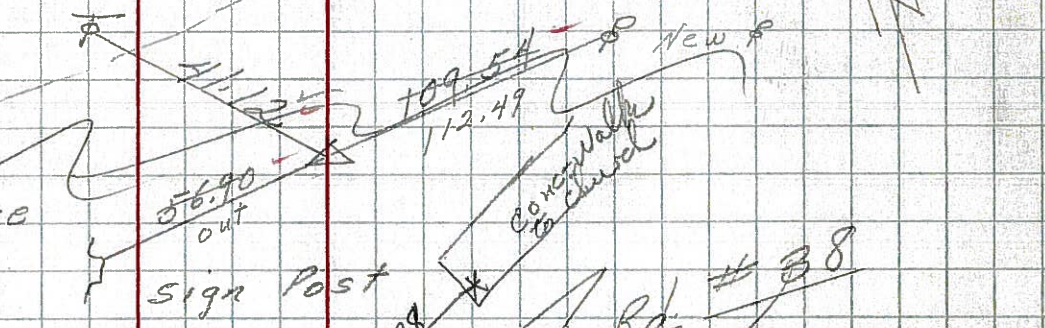
381
8477



28

Ties Good 2/24/69
Sta. 111+00
R.R. spt. on & R/W
1/2" below surface

380 8476

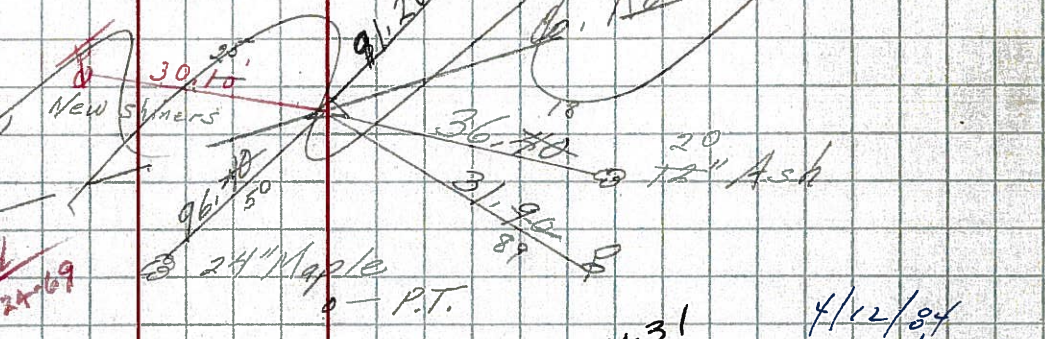


27

Ties Good - 2/24/69
Sta. 77+00
P.K. R.R. spt. on & R/W
1" & 2" below surface

8475 379

P.T. - R.R. spt Found 2-24-69



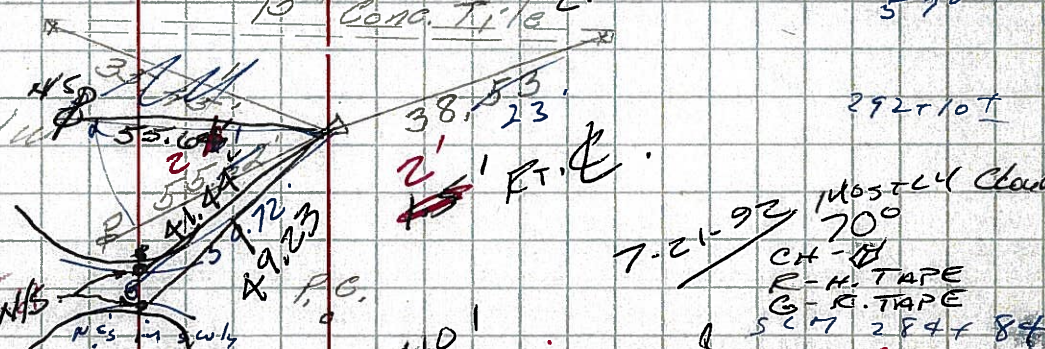
8935
3222
123

26

Ties Good 2/24/69
Sta. 49435.6
R.R. spt. on & R/W
on surface
2 R.R. & P.T.

8474 378

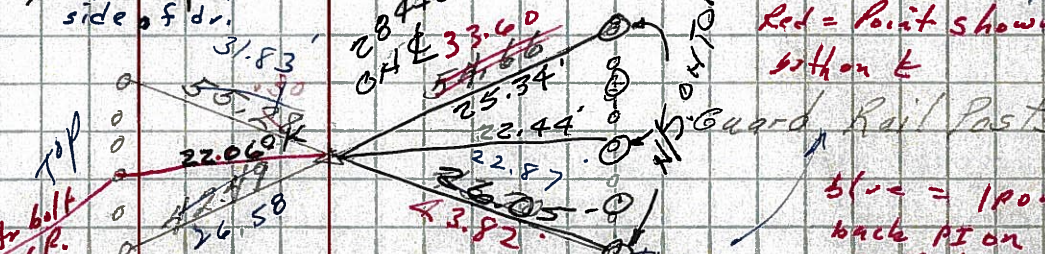
P.C. - R.R. spt Found 2-24-69



8933
126
117

25

Found R.R. spt.
on surface
0410



4/12/84
sunny breezy
57°

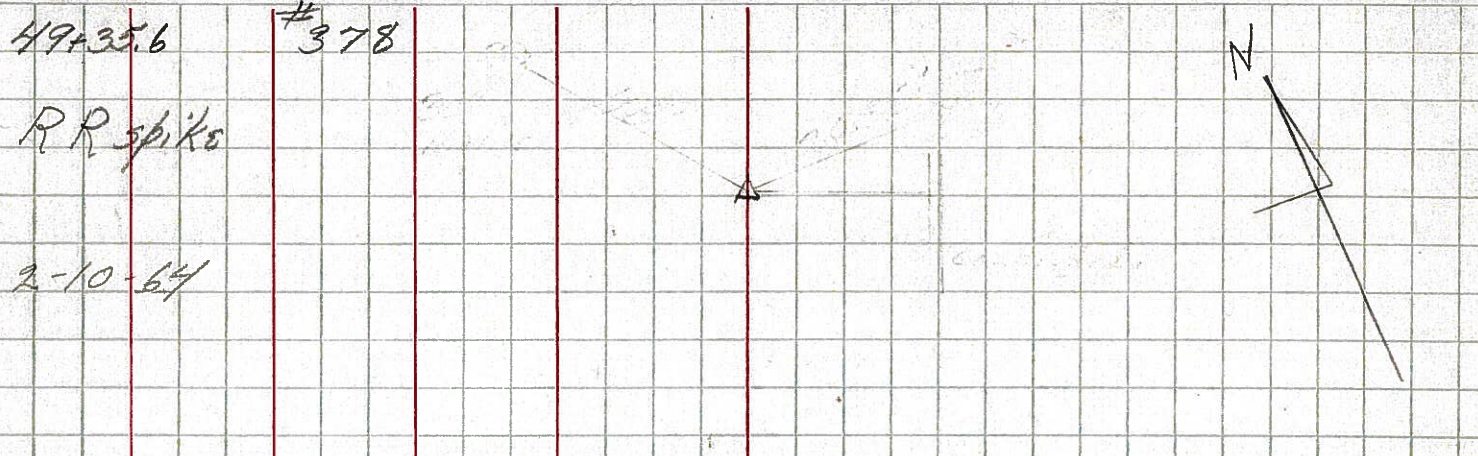
7-21-92
Mostly Cloud
70°
CH - T
R - H. TAPE
G - G. TAPE
S 17 284 x 84

Red = Point shown
within 6
blue = 100.
back P.I. on
C.P.

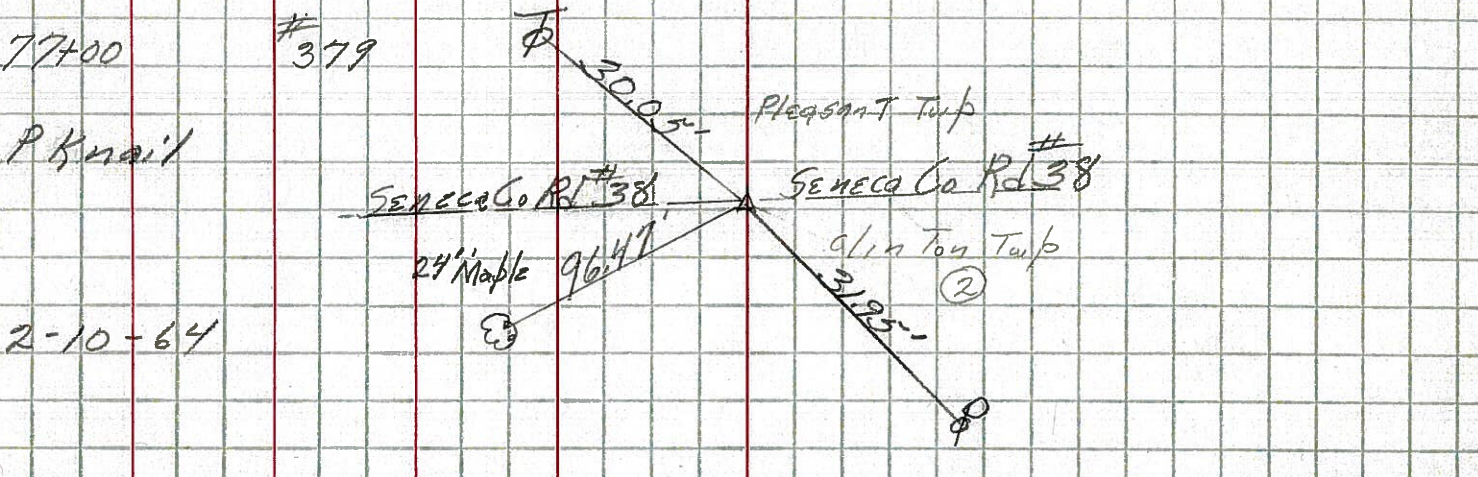
PERSONNEL	TITLE	PERSONNEL	TITLE	COUNTY	DATE
E Krabill				Seneca	
Kowaleski				S. R. 101	WEATHER
Geyman				SEC.	TEMP.
Bruggman					JOB NO.

DESCRIPTION	LEFT	CENTER LINE	RIGHT	JOB NO.
-------------	------	-------------	-------	---------

(27)



(28)



(29)

