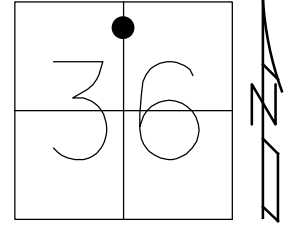


O.D.O.T. DISTRICT 2 SURVEY OFFICE (USE ONLY)

PERSONNEL _____ REFERENCE NO. 31 SHEET 7 OF 46
 NOTES O'DONNELL DATE 3-24-17 ROUTE SR 101
 H.C. O'DONNELL WEATHER WINDY COUNTY SENECA
 R.C. HELDMAN TEMP. 57°F TOWNSHIP PLEASENT
 SECTION 36
 DWG BY MAHLER PID 100787 T 3 N R 15 E

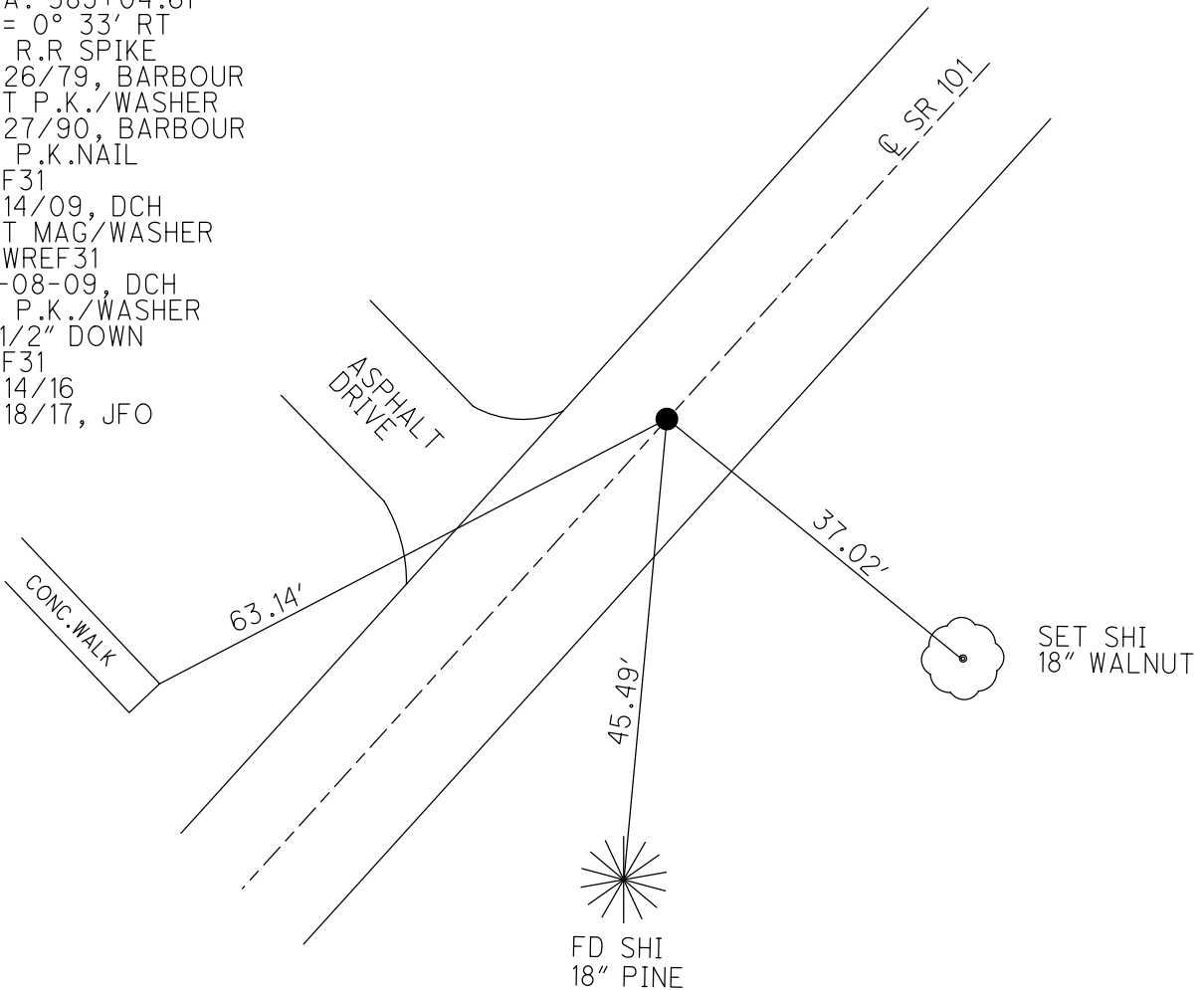
TYPE MONUMENT P.K./WASHER
~~ON SURFACE~~ - BELOW 4.5"
 OFFSET \varnothing PAVEMENT ON LT : RT
- TO - EDGE PAVEMENT
 STATION: 387+18



HORZ. DATUM: NAD83 2011 GEOID: NAVD88-2012A
 GRID: NORTHING: 552550.967 EASTING: 1807899.699

RECORD:
 1924 PLAN
 STA. 389+04.61
 $\Delta = 0^\circ 33' RT$
 FD R.R SPIKE
 6/26/79, BARBOUR
 SET P.K./WASHER
 8/27/90, BARBOUR
 FD P.K.NAIL
 REF31
 7/14/09, DCH
 SET MAG/WASHER
 NEWREF31
 10-08-09, DCH
 FD P.K./WASHER
 4 1/2" DOWN
 REF31
 6/14/16
 9/18/17, JFO

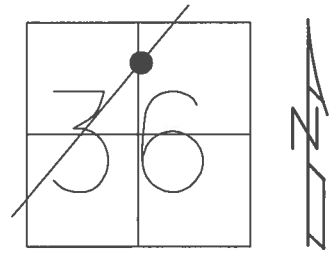
RES.
 #3924



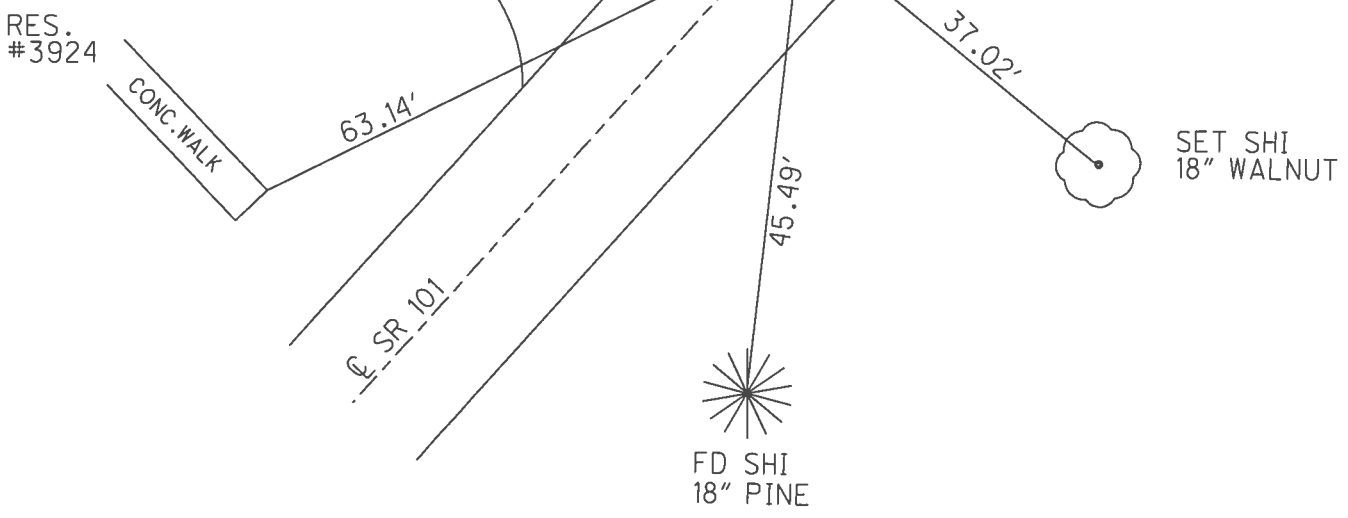
O.D.O.T. DISTRICT 2 SURVEY OFFICE (USE ONLY)

PERSONNEL _____ REFERENCE NO. 31 SHEET 7 OF 46
 NOTES O'DONNELL DATE 3/24/17 ROUTE SR 101
 H.C. O'DONNELL WEATHER WINDY COUNTY SENECA
 R.C. HELDMAN TEMP. 57° TOWNSHIP PLEASANT
 SECTION 36
 T 3 N R 15 E

TYPE MONUMENT P.K./WASHER
~~ON SURFACE~~ - BELOW 4 1/2"
 LEFT - ☉ PAV'T - RIGHT ON
_____ TO _____ EDGE PAVEMENT
 S.L.M. 387+18
 GRID: NORTHING: 552550.967 EASTING: 1807899.699



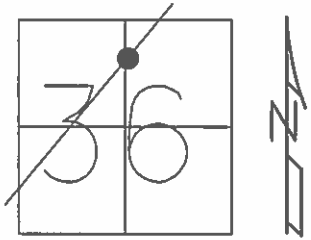
RECORD:
 STA. 389+04.61
 145+50 BK
 $\Delta = 0^\circ 33' RT$
 1924 PLAN
 FD R.R SPIKE ON
 ☉ R/W.
 SET P.K./WASHER
 8/27/90
 SET MAG/WASHER
 10-08-09, DH
 FD P.K./WASHER
 4 1/2" DOWN
 REF31
 6/14/16, JFO
 FD HOLE W/P.K./WASHER
 COVERED W/GRAVEL
 9/18/17, JFO



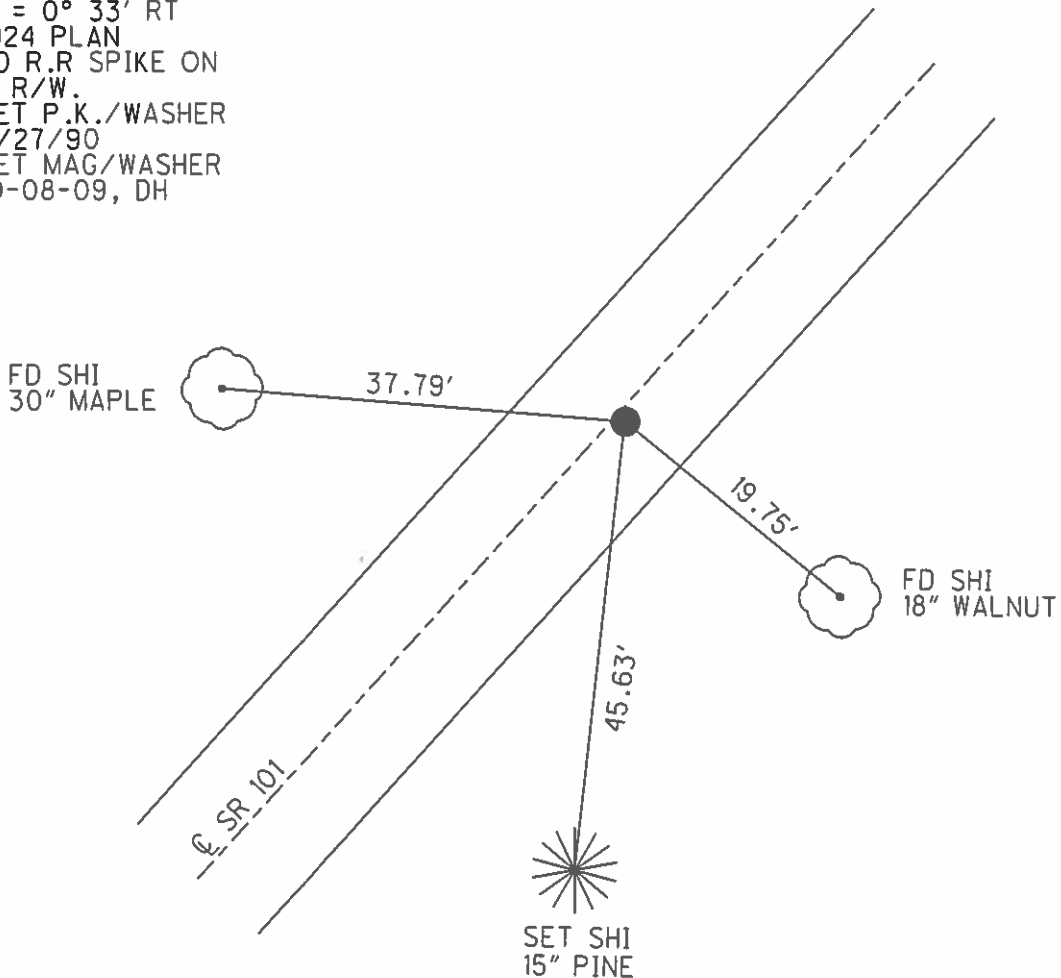
O.D.O.T. DISTRICT 2 SURVEY OFFICE (USE ONLY)

PERSONNEL _____ REFERENCE NO. 31 SHEET 7 OF 46
 NOTES HOMAN DATE 7/14/09 ROUTE SR 101
 H.C. HOMAN WEATHER SUNNY COUNTY SENECA
 R.C. ROUSOS TEMP. 75° TOWNSHIP PLEASANT
 SECTION 36
 T 3 N R 15 E

TYPE MONUMENT P.K.NAIL
 ON SURFACE - ~~BELOW~~ ON
~~LEFT~~ - Q PAV'T - RIGHT 1'
TO EDGE PAVEMENT
 S.L.M. 387+18



RECORD:
 STA. 389+04.61
 145+50 BK
 $\Delta = 0^\circ 33' \text{ RT}$
 1924 PLAN
 FD R.R SPIKE ON
 Q R/W.
 SET P.K./WASHER
 8/27/90
 SET MAG/WASHER
 10-08-09, DH



O.D.O.T. DISTRICT 2 SURVEY OFFICE

PERSONNEL _____

REFERENCE NO. 31

SHEET 5 OF 41

NOTES RIPPLE

H.C. Barbour

R.C. _____

DATE 8/27/90

WEATHER SUNNY

TEMP. 73°

ROUTE SR#101

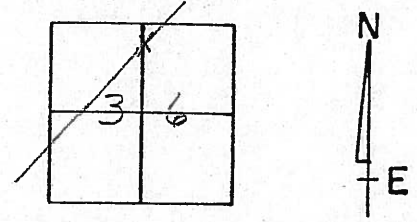
COUNTY SENECA

TOWNSHIP PLEASANT

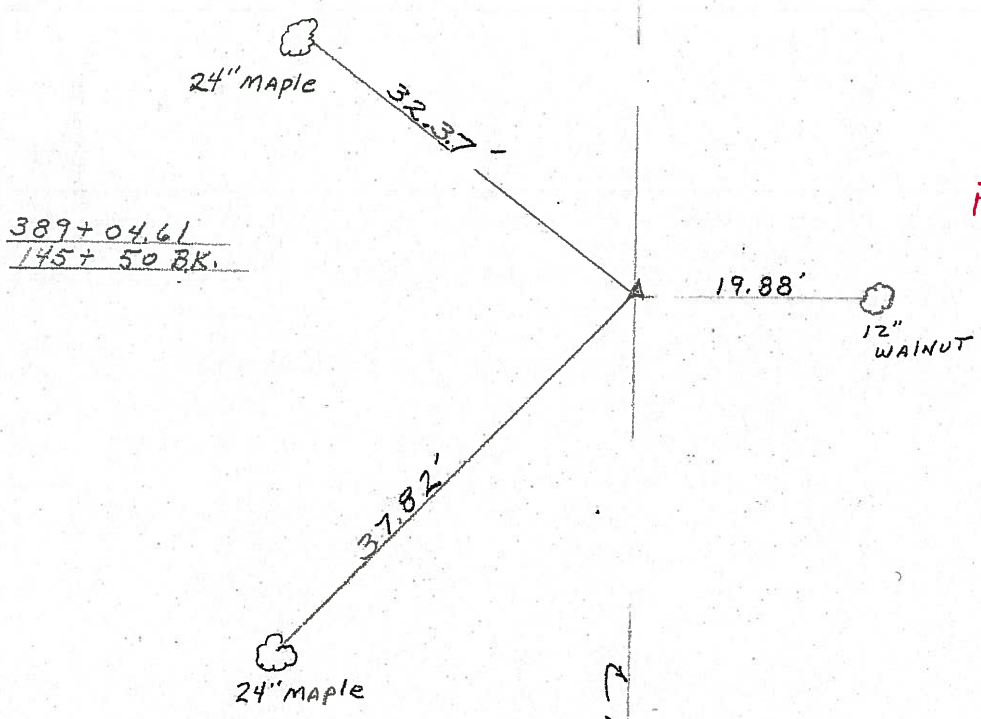
SECTION 36

T3 N R 15 E

TYPE MONUMENT set P.K. & Washer
 ON SURFACE - BELOW R.R. Spike on R/W
 LEFT - PAV'T. - RIGHT 1' ± RT. & Pavement.
 _____ TO _____ EDGE PAVEMENT
 S.L.M. _____



387 + ~~18~~ 18



$\Delta = 0^\circ 33' \text{ RT.}$
from 1924 PLAN

R/W SR#101

O.D.O.T. DISTRICT 2 SURVEY OFFICE

PERSONNEL _____

REFERENCE NO. 31

SHEET 5 OF 41

NOTES RIPPLE

H.C. Barbour

R.C. _____

DATE 8/27/90

WEATHER SUNNY

TEMP. 73°

ROUTE SR#101

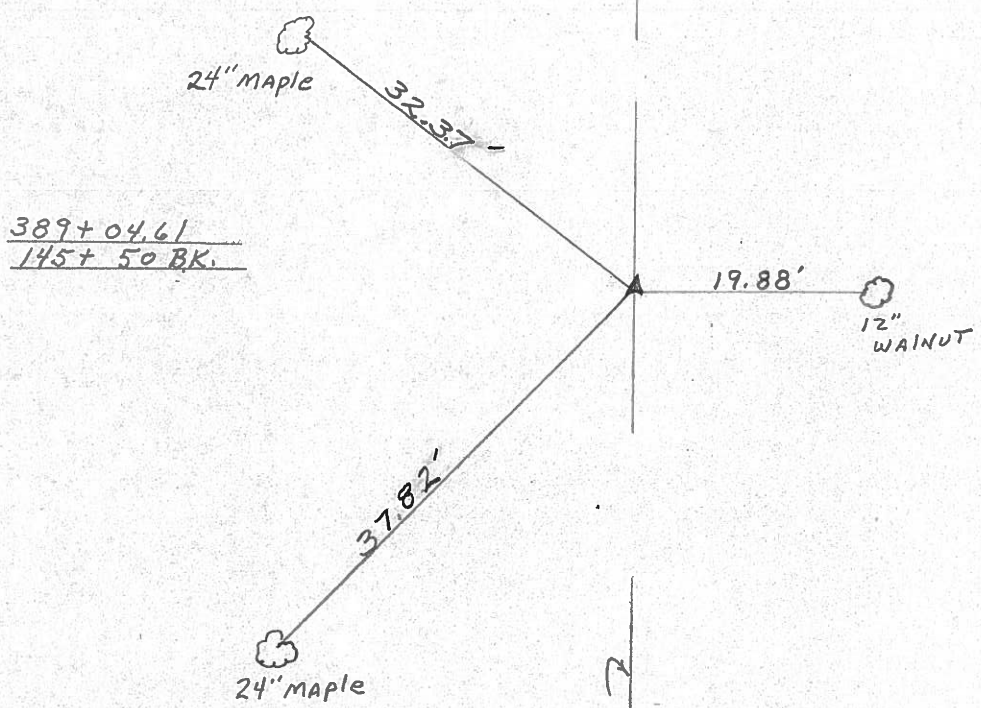
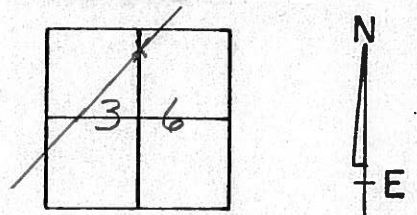
COUNTY Seneca

TOWNSHIP Pleasant

SECTION 36

T 3 N R 15 E

TYPE MONUMENT Set P.K. & Washer
 ON SURFACE - BELOW R.R. Spike on & R/W
 LEFT - & PAV'T. - RIGHT 1' ± RT. & Pavement.
 _____ TO _____ EDGE PAVEMENT
 S.L.M. _____



Δ = 0° 33' RT,
from 1924 PLAN

& R/W SR#101

County Seneca S.R. 101

Date 6-26-79

Township Pleasant

Weather Fair

Section 36

Temp. 70°

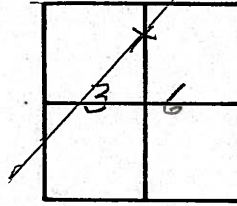
T3N, R15E

Personnel Schneider

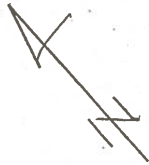
Mosser

Barbour

(31)



~~#36~~

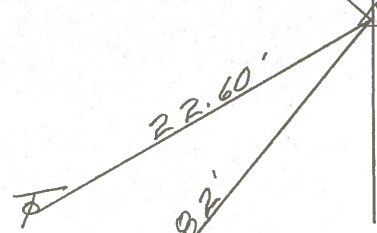


⊥ S.R. # 101

24" Maple



32.37'



22.60'

37.82'

24" Maple

389+04.61

145+50 BK

R.R. spk. on ⊥ R/W

Reset P.K. Nail

($\Delta = 0^\circ 33'$ Rt.)
from 1924 Plan)

PERSONNEL	TITLE	PERSONNEL	TITLE
Schneider		Vinison	
Mosser			
Barbour			
Geyman			

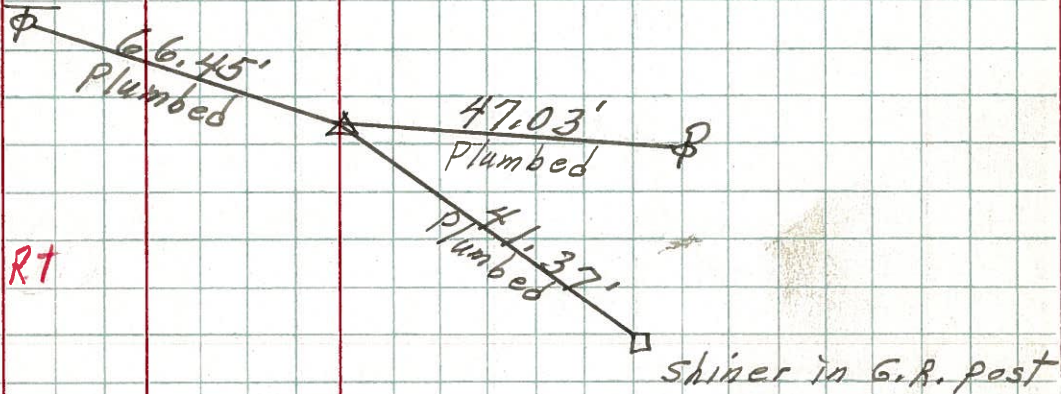
COUNTY Seneca DATE 10-4-71
 S. R. 101 WEATHER Fair
 SEC. Br. # 8.10 TEMP. 72°

DESCRIPTION _____ LEFT _____ CENTER LINE _____ RIGHT _____ JOB NO. 02827(0)

32

~~37~~ X

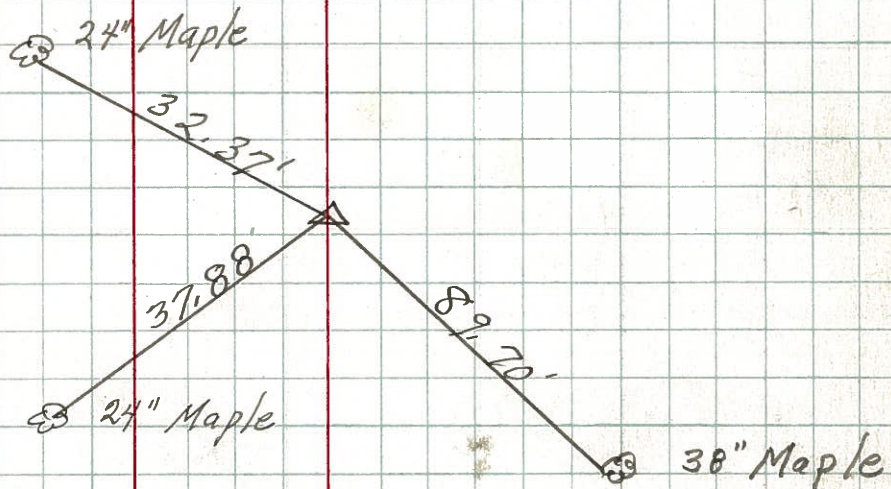
P.I.
 404 + 41.26
 Fd. R.R. spk.
 2 1/2" down
 $\Delta = 7004' 30''$



31

~~36~~

P.I.
 389 + 0 + 1.61
 Fd. R.R. spk.
 1 1/2" down
 ($\Delta = 0033' RT$)
 (from 1924 Plan)



PERSONNEL TITLE PERSONNEL TITLE

COUNTY Schenectady DATE _____

Krabill _____

S. R. 101 WEATHER _____

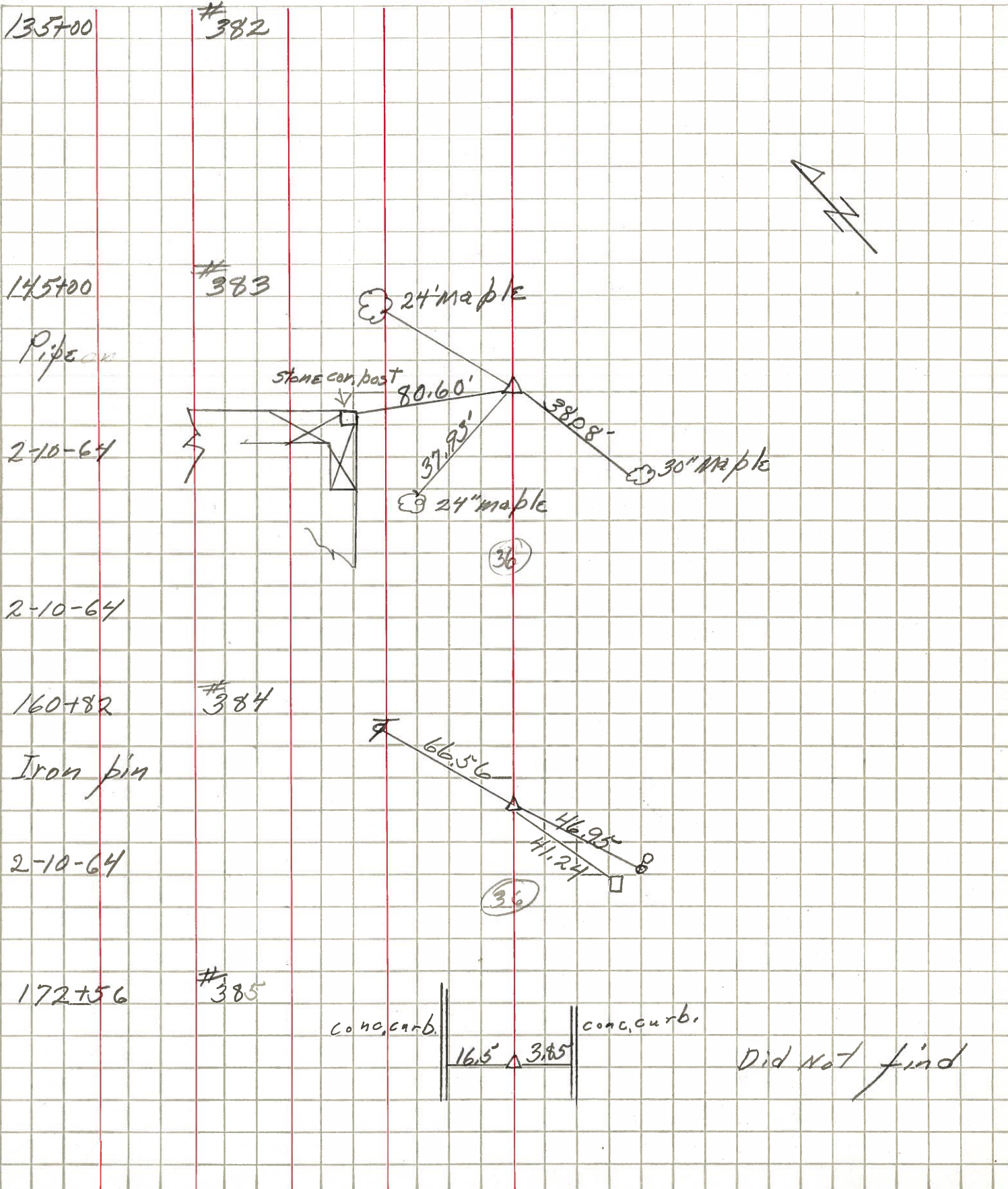
Nowaleski _____

SEC. _____ TEMP. _____

Geyman _____

Bruggman _____

DESCRIPTION LEFT CENTER LINE RIGHT JOB NO.



Did not find