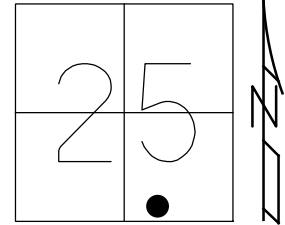


O.D.O.T. DISTRICT 2 SURVEY OFFICE (USE ONLY)

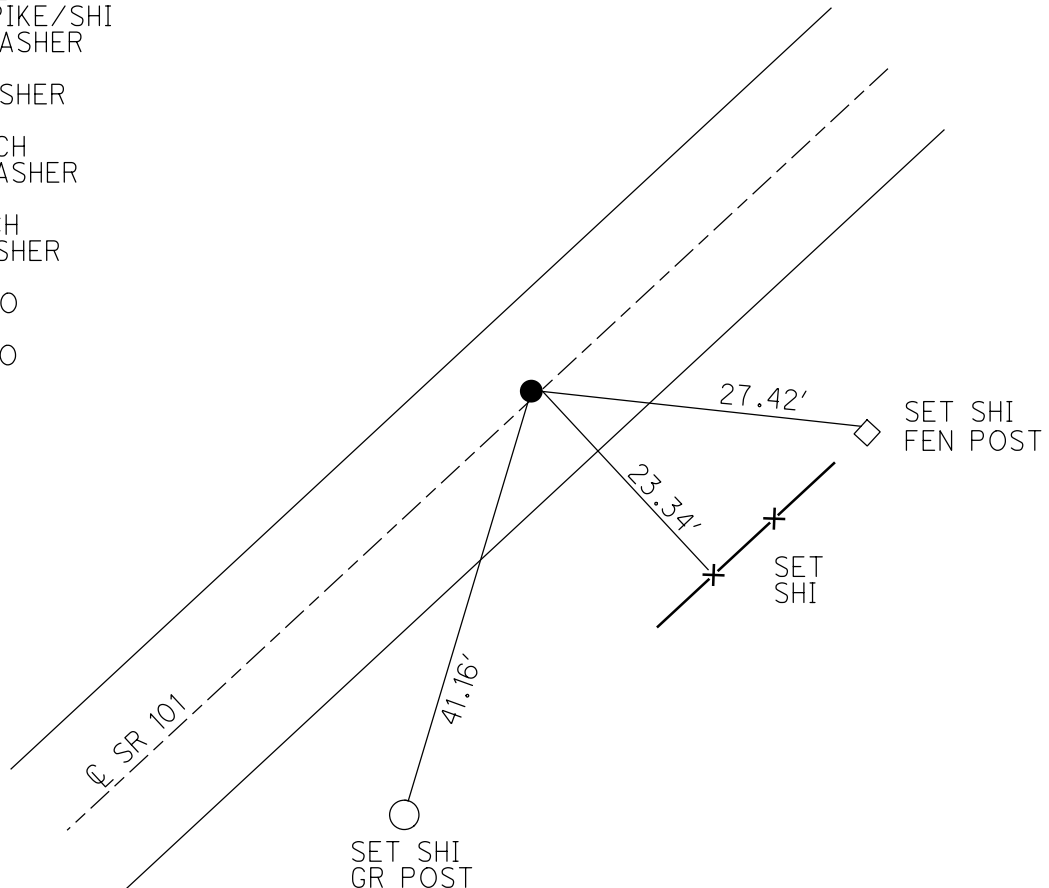
PERSONNEL \_\_\_\_\_ REFERENCE NO. 32 SHEET 8 OF 46  
 NOTES HOMAN DATE 7-14-09 ROUTE SR 101  
 H.C. HOMAN WEATHER SUNNY COUNTY SENECA  
 R.C. ROUSOS TEMP. 80°F TOWNSHIP PLEASENT  
 DWG BY MAHLER PID 100787 SECTION 25  
 T 3 N R 15 E

TYPE MONUMENT P.K./WASHER  
 ON SURFACE - ~~BELOW~~ ON  
 OFFSET  $\odot$  PAVEMENT 2.3' LT : ~~RT~~  
- TO - EDGE PAVEMENT  
 STATION: 402+46



HORZ.DATUM: NAD83 2011 GEOID: NAVD88-2012A  
 GRID: NORTHING: 553679.363 EASTING: 1808942.359

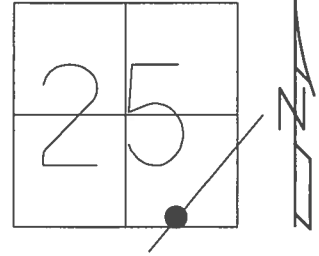
RECORD: P.I.  
 $\Delta = 7^\circ 04' 30''$  RT  
 STA. 404+41.26  
 STA. 160+82  
 FD BOAT SPIKE/SHI  
 SET P.K./WASHER  
 8/27/90  
 FD P.K./WASHER  
 REF32  
 7/14/09, DCH  
 SET MAG/WASHER  
 NEWREF32  
 11/4/09, DCH  
 FD MAG/WASHER  
 REF32  
 6/14/16, JFO  
 UNCOVERED  
 9/18/17, JFO



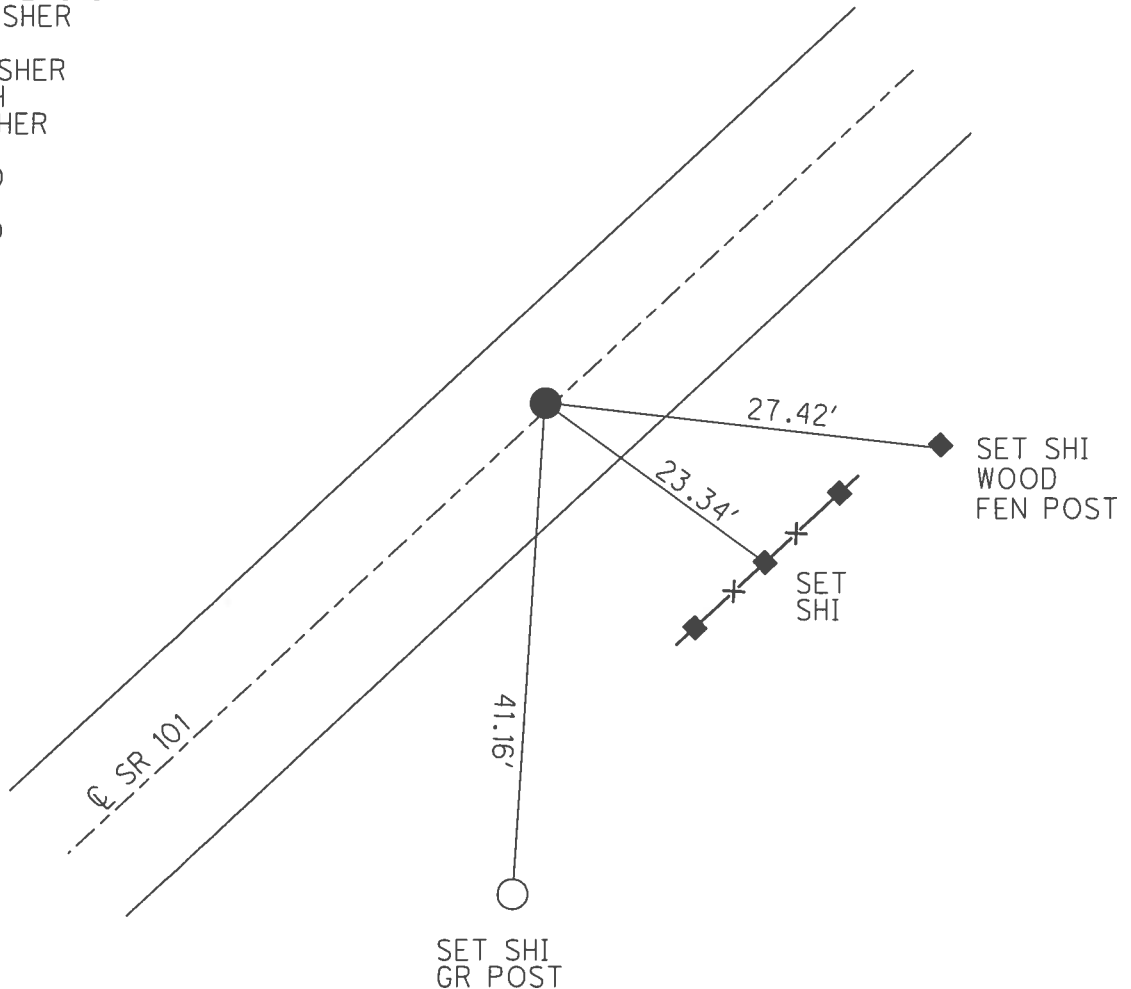
O.D.O.T. DISTRICT 2 SURVEY OFFICE (USE ONLY)

PERSONNEL \_\_\_\_\_ REFERENCE NO. 32 SHEET 8 OF 46  
 NOTES HOMAN DATE 7/14/09 ROUTE SR 101  
 H.C. HOMAN WEATHER SUNNY COUNTY SENECA  
 R.C. ROUSOS TEMP. 80° TOWNSHIP PLEASANT  
 \_\_\_\_\_ SECTION 25  
 \_\_\_\_\_ T 3 N R 15 E

TYPE MONUMENT P.K./WASHER  
 ON SURFACE - ~~BELOW~~ ON \_\_\_\_\_  
 LEFT - ℄ PAV'T - ~~RIGHT~~ 2.3'  
 \_\_\_\_\_ TO \_\_\_\_\_ EDGE PAVEMENT  
 S.L.M. 402+46  
 GRID: NORTHING: 553679.363 EASTING: 1808942.359



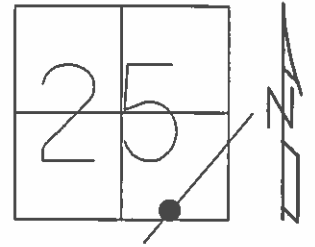
RECORD: P.I.  
 $\Delta = 7^\circ 04' 30''$  RT  
 STA. 404+41.26  
 STA. 160+82  
 FD BOAT SPIKE/SHI  
 SET P.K./WASHER  
 8/27/90  
 SET MAG/WASHER  
 11/4/09, DCH  
 FD MAG/WASHER  
 REF32  
 6/14/16, JFO  
 UNCOVERED  
 9/18/17, JFO



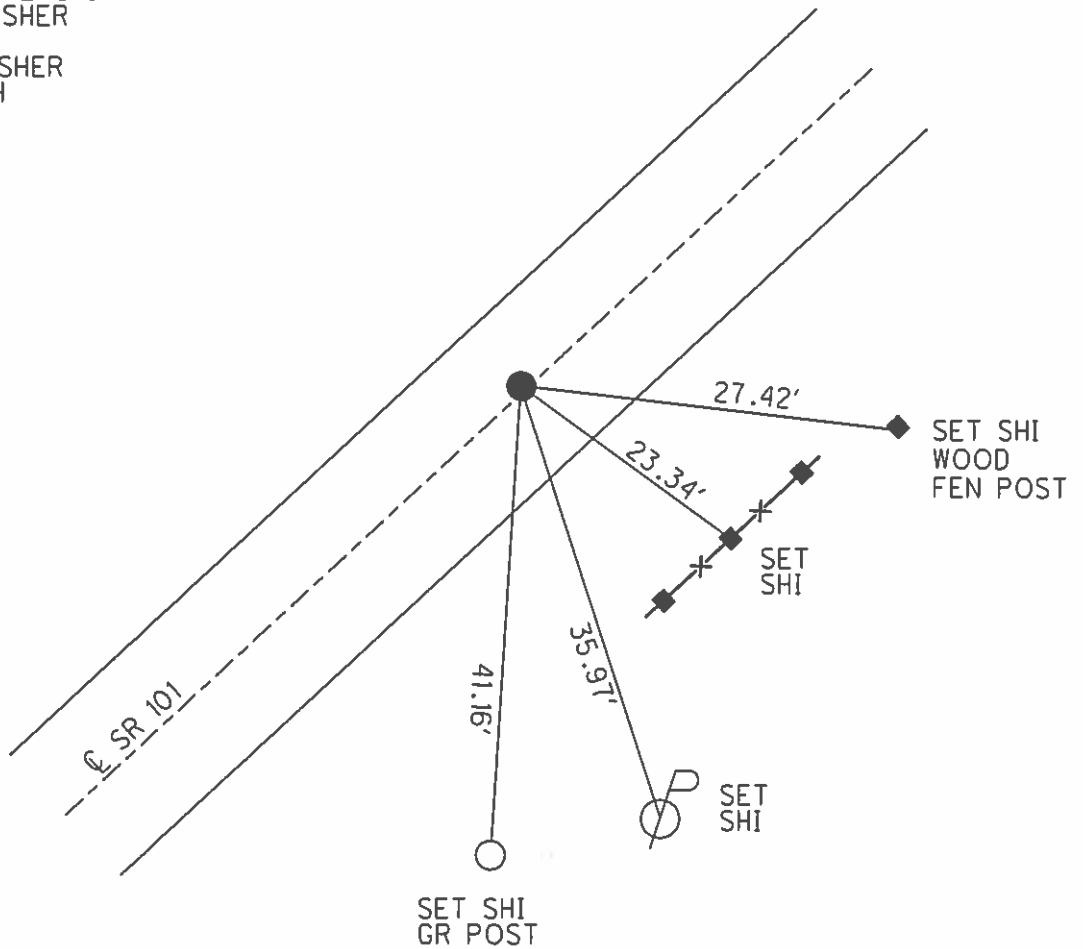
O.D.O.T. DISTRICT 2 SURVEY OFFICE (USE ONLY)

PERSONNEL \_\_\_\_\_ REFERENCE NO. 32 SHEET 8 OF 46  
 NOTES HOMAN DATE 7/14/09 ROUTE SR 101  
 H.C. HOMAN WEATHER SUNNY COUNTY SENECA  
 R.C. ROUSOS TEMP. 80° TOWNSHIP PLEASANT  
 SECTION 25  
 T 3 N R 15 E

TYPE MONUMENT P.K./WASHER  
 ON SURFACE - ~~BELOW~~ ON \_\_\_\_\_  
 LEFT - C PAV'T - ~~RIGHT~~ 2.3'  
 TO \_\_\_\_\_ EDGE PAVEMENT  
 S.L.M. 402+46  
 GRID: NORTHING: 553679.439 EASTING: 1808942.320



RECORD: P.I.  
 $\Delta = 7^{\circ} 04' 30''$  RT  
 STA. 404+41.26  
 STA. 160+82  
 FD BOAT SPIKE/SHI  
 SET P.K./WASHER  
 8/27/90  
 SET MAG/WASHER  
 11/4/09, DCH



# O.D.O.T. DISTRICT 2 SURVEY OFFICE

PERSONNEL \_\_\_\_\_

REFERENCE NO. 32

SHEET 6 OF 41

NOTES Ripple

H.C. BARBOUR

R.C. \_\_\_\_\_

DATE 8/27/90

WEATHER SUNNY

TEMP. 73°

ROUTE SR#101

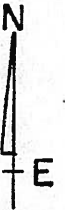
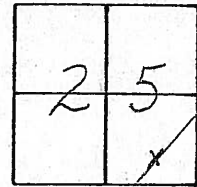
COUNTY Seneca

TOWNSHIP Pleasant

SECTION 25

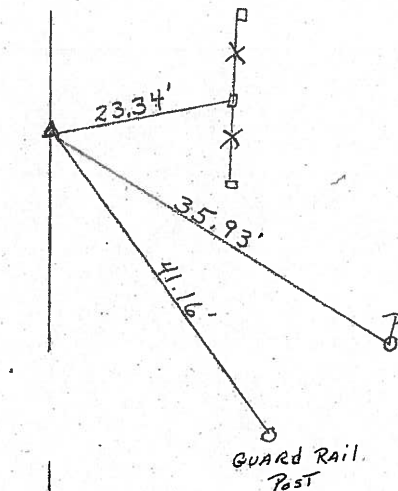
T 3 N R 15 E

TYPE MONUMENT Set P.K. & washer  
 ON SURFACE - BELOW Boat Spike & shiner  
 LEFT - ¢ PAV'T. - RIGHT 2.3' LT. of ¢ PAV'T.  
 TO \_\_\_\_\_ EDGE PAVEMENT  
 S.L.M. \_\_\_\_\_



402+46

A = 7° 04' 30" RT.  
P.I. 404+41.26  
160+82 old STATIONS



Fid hole  
2-4-85  
SAH

¢ R/W SR#101

# O.D.O.T. DISTRICT 2 SURVEY OFFICE

PERSONNEL \_\_\_\_\_

REFERENCE NO. 32

SHEET 6 OF 41

NOTES RIPPLE

H.C. BARBOUR

R.C. \_\_\_\_\_

DATE 8/27/90

WEATHER SUNNY

TEMP. 73°

ROUTE SR#101

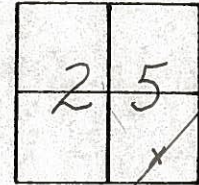
COUNTY SENECA

TOWNSHIP PLEASANT

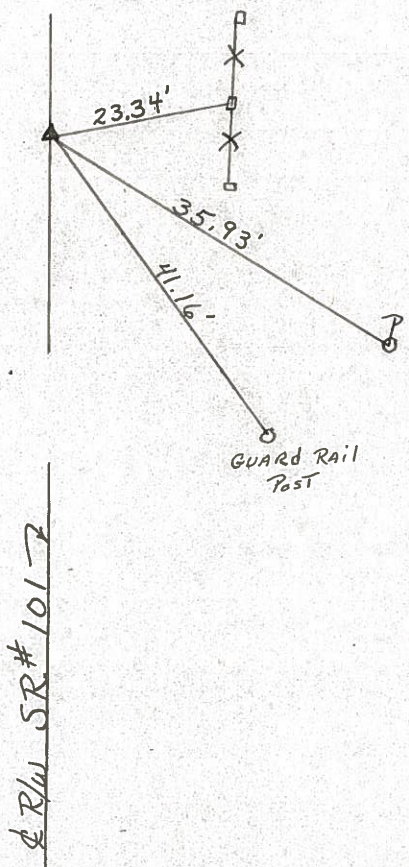
SECTION 25

T 3 N R 15 E

TYPE MONUMENT SET P.K. & WASHER  
 ON SURFACE - BELOW BOAT SPIKE & SHINER  
 LEFT - ¢ PAV'T. - RIGHT 2.3' LT. of ¢ PAV'T.  
 TO \_\_\_\_\_ EDGE PAVEMENT  
 S.L.M. \_\_\_\_\_



A = 7° 04' 30" RT.  
P.I. 404 + 41.26  
160 + 82 old STATIONS



¢ R/W SR#101

County Seneca S.R. 101

Date 6-26-79

Township Pleasant

Weather Fair

Section 25

Temp. 72°

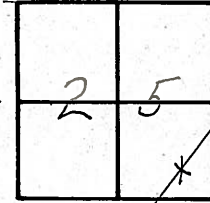
T<sub>3</sub>N, R<sub>15</sub>E

Personnel Schneider

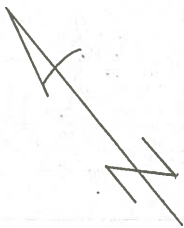
Mosser

Barbour

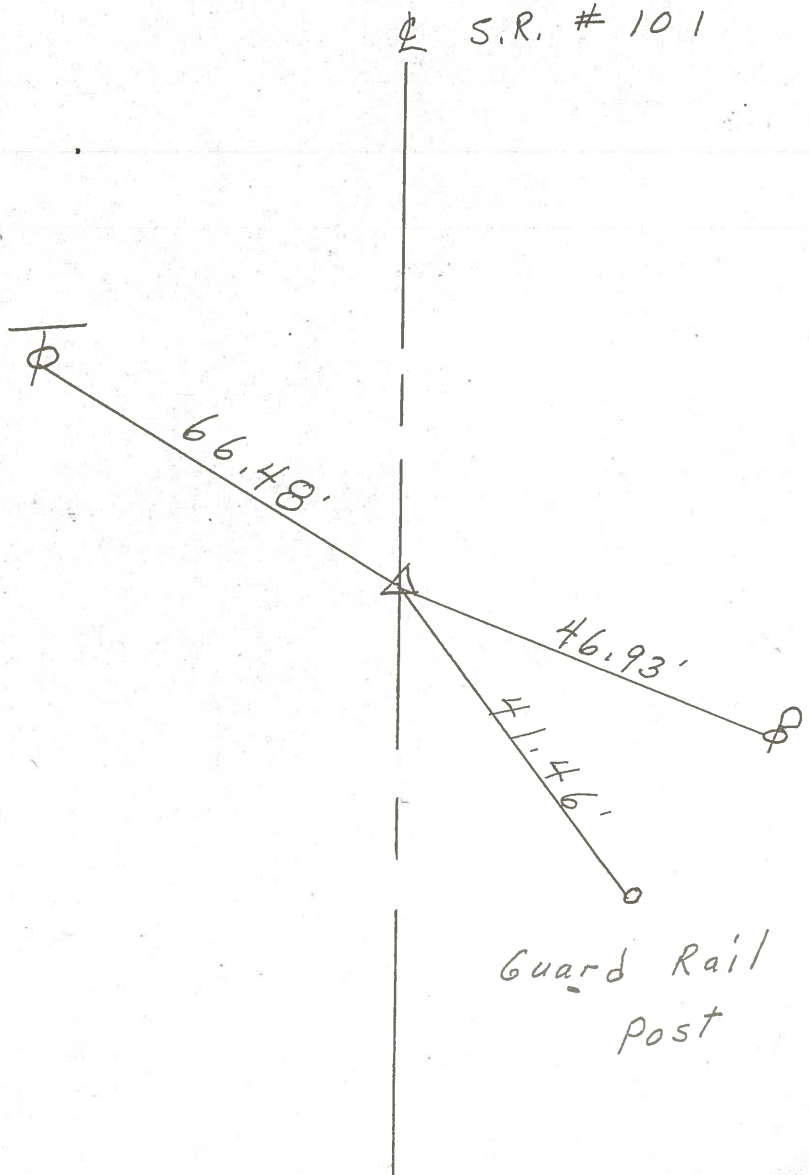
(32)



~~#37~~



⊥ S.R. # 101



P. I. 404 + 41.26

160 + 82 old stations

R.R. spk. on ⊥ R/W

2 1/2" down

Reset Mine spk.

2.3' Lt. of ⊥

Δ = 7° 04' 30" Rt.

Δ = 6° 58' RT. SEC. K  
1924 PLANS

PERSONNEL	TITLE	PERSONNEL	TITLE
Schneider		Vinison	
Mosser			
Barbour			
Geyman			

COUNTY Seneca DATE 10-4-71  
 S. R. 101 WEATHER Fair  
 SEC. Br # 8.10 TEMP. 72°

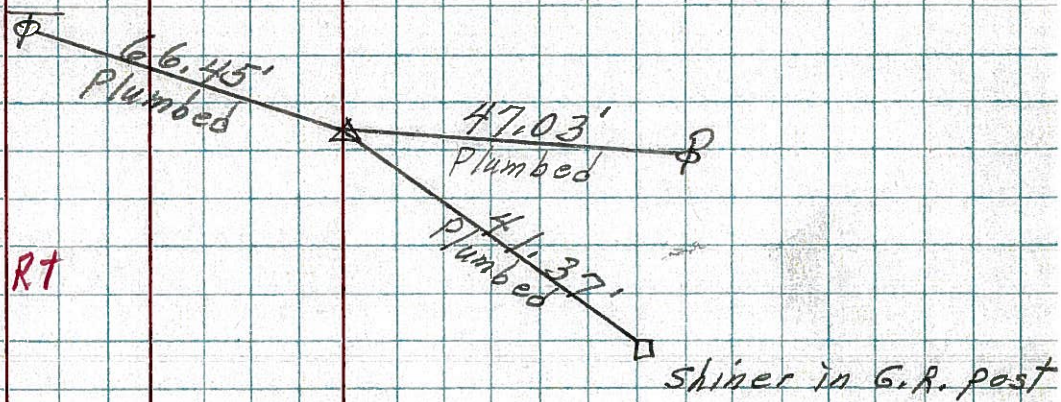
DESCRIPTION \_\_\_\_\_ JOB NO. 02827(0)

LEFT CENTER LINE RIGHT

(32)

~~32~~ X

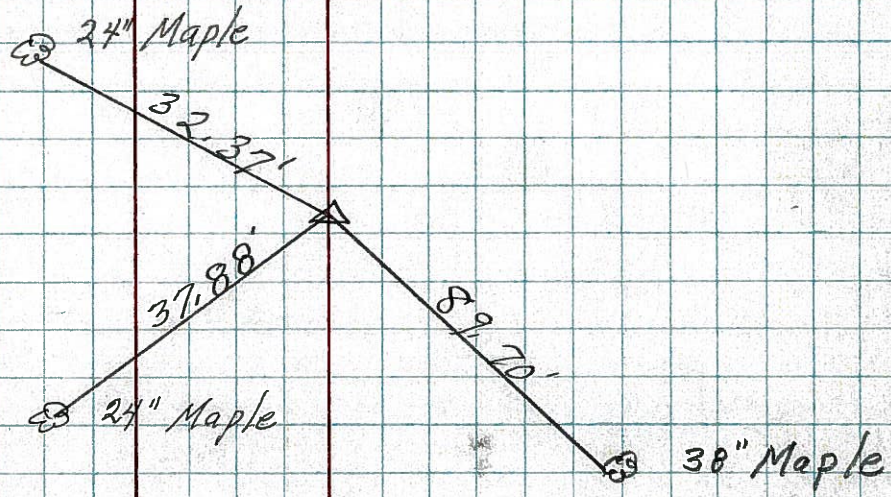
P.I.  
 404 + 41.26  
 Fd. R.R. spk.  
 2 1/2" down  
 $\Delta = 7^{\circ} 04' 30''$



(31)

~~31~~

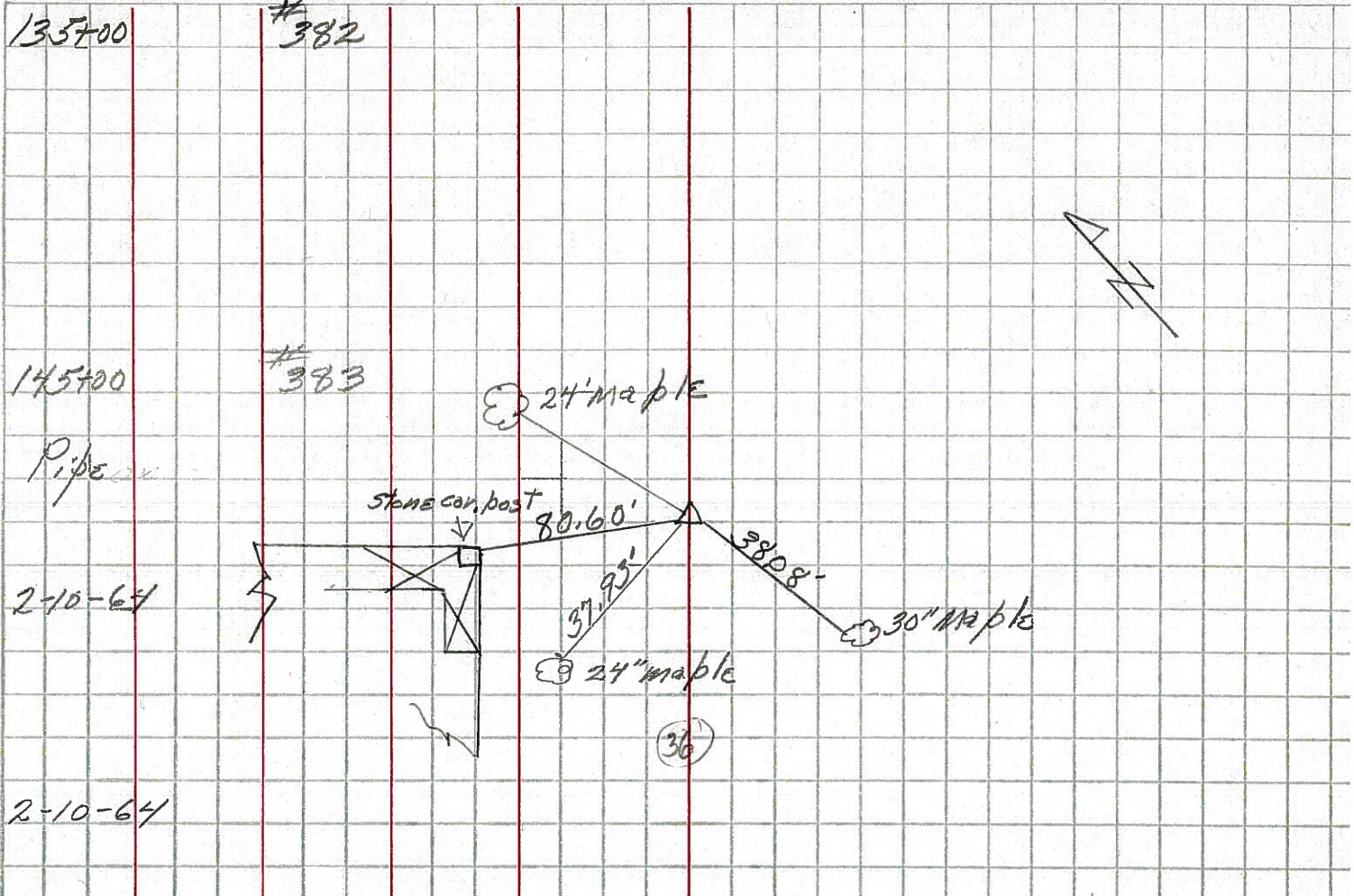
P.I.  
 389 + 04.61  
 Fd. R.R. spk.  
 1 1/2" down  
 ( $\Delta = 0^{\circ} 33' RT$ )  
 (from 1924 Plan)



PERSONNEL	TITLE	PERSONNEL	TITLE	COUNTY	DATE
Krabill				Seneca	
Kowaleski				S. R. 101	
Geyman				SEC.	TEMP.
Bruggman					

DESCRIPTION	LEFT	CENTER LINE	RIGHT	JOB NO.
-------------	------	-------------	-------	---------

31



32

