

O.D.O.T. DISTRICT 2 SURVEY OFFICE (USE ONLY)

PERSONNEL

REFERENCE NO. 35 A

SHEET 12 OF 46

NOTES RIPPLE DATE 8-27-90

ROUTE SR 101

H.C. BARBOUR WEATHER SUNNY

COUNTY SENECA

R.C. GEYMAN TEMP. 92°F

TOWNSHIP ADAMS

SECTION 30

DWG BY MAHLER PID 100787

T 3 N R 16 E

TYPE MONUMENT P.K.NAIL

ON SURFACE - ~~BELOW~~ ON

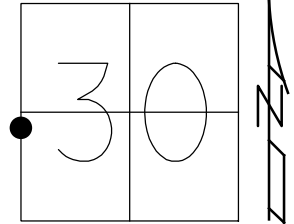
OFFSET ☉ PAVEMENT ON LT : RT

- TO - EDGE PAVEMENT

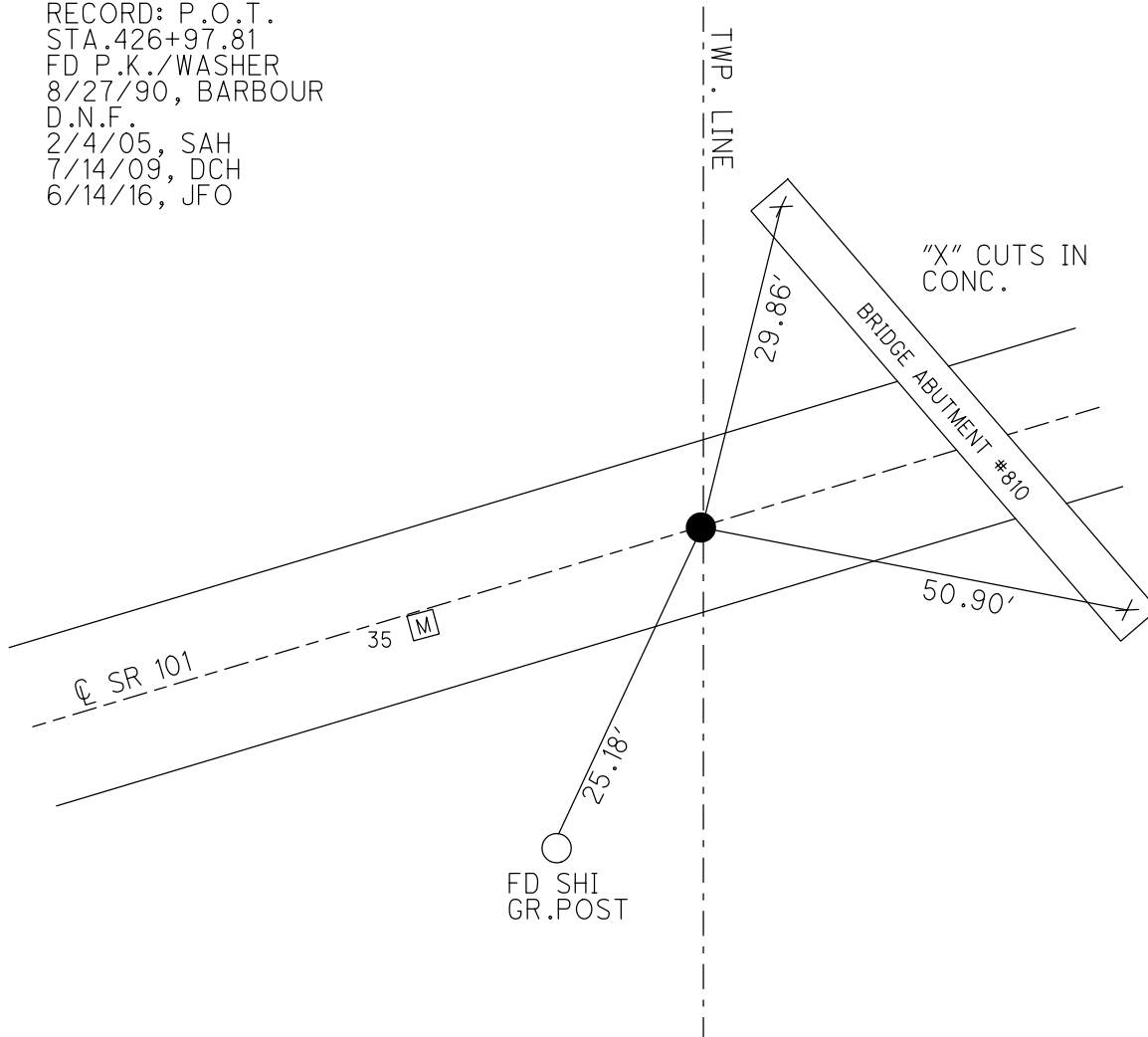
STATION: 425+06

HORZ.DATUM: - GEOID: -

GRID: NORTHING: - EASTING: -



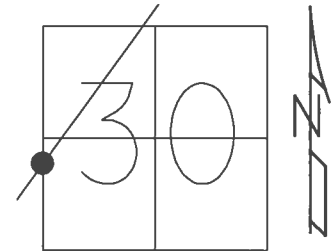
RECORD: P.O.T.
 STA. 426+97.81
 FD P.K./WASHER
 8/27/90, BARBOUR
 D.N.F.
 2/4/05, SAH
 7/14/09, DCH
 6/14/16, JFO



O.D.O.T. DISTRICT 2 SURVEY OFFICE (USE ONLY)

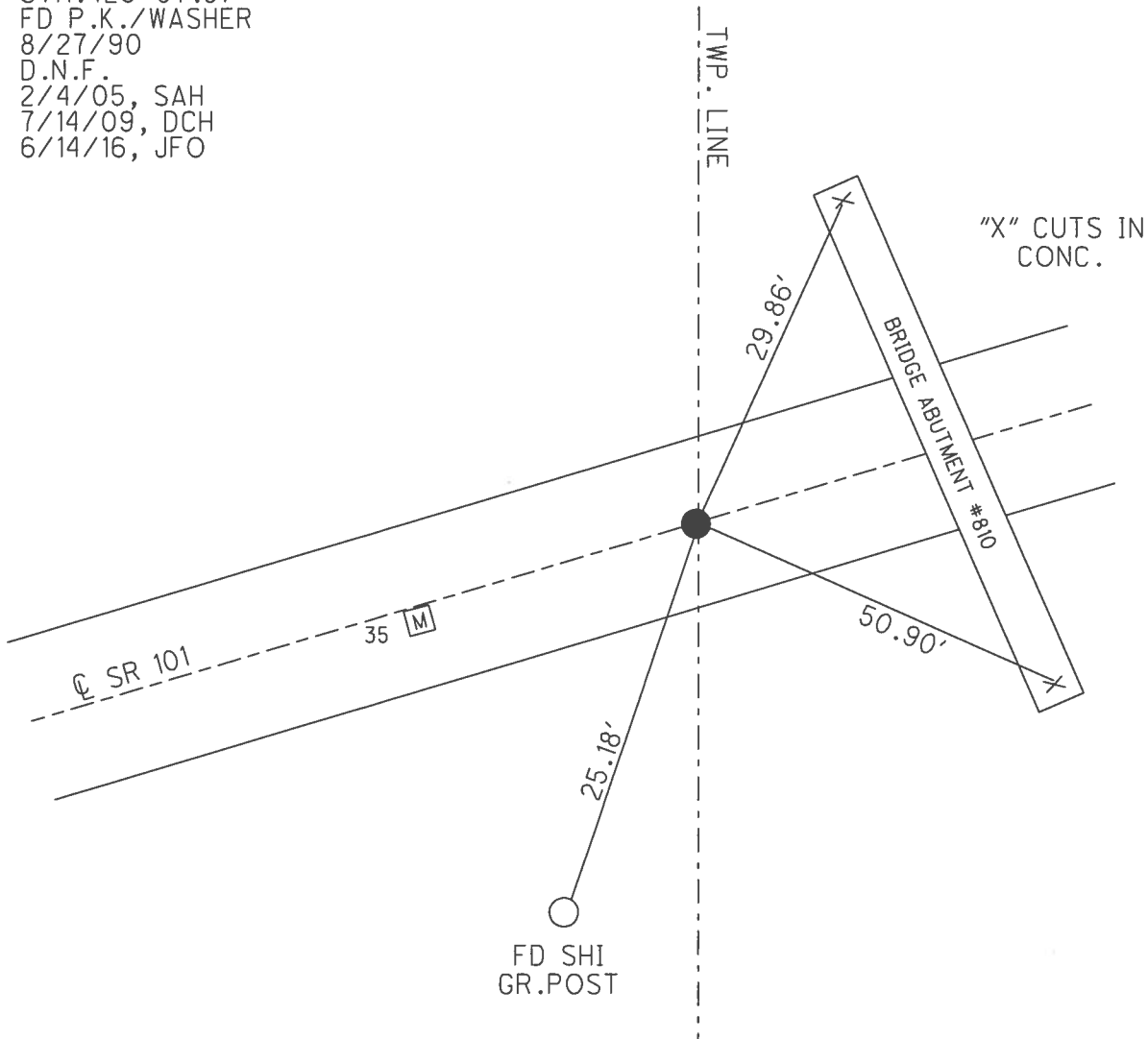
PERSONNEL _____ REFERENCE NO. 35 A SHEET 12 OF 46
 NOTES RIPPLE DATE 8/27/90 ROUTE SR 101
 H.C. BARBOUR WEATHER SUNNY COUNTY SENECA
 R.C. GEYMAN TEMP. 92° TOWNSHIP ADAMS
 _____ SECTION 30
 _____ T 3 N R 16 E

TYPE MONUMENT P.K.NAIL
 ON SURFACE - ~~BELOW~~ ON _____
 LEFT - ☉ PAV'T - RIGHT ON _____
 _____ TO _____ EDGE PAVEMENT
 S.L.M. 425+06



GRID: NORTHING: - _____ EASTING: - _____

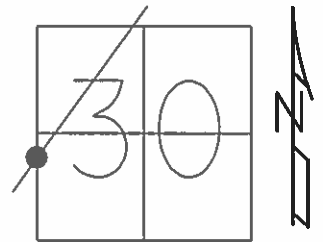
RECORD: P.O.T.
 STA. 426+97.81
 FD P.K./WASHER
 8/27/90
 D.N.F.
 2/4/05, SAH
 7/14/09, DCH
 6/14/16, JFO



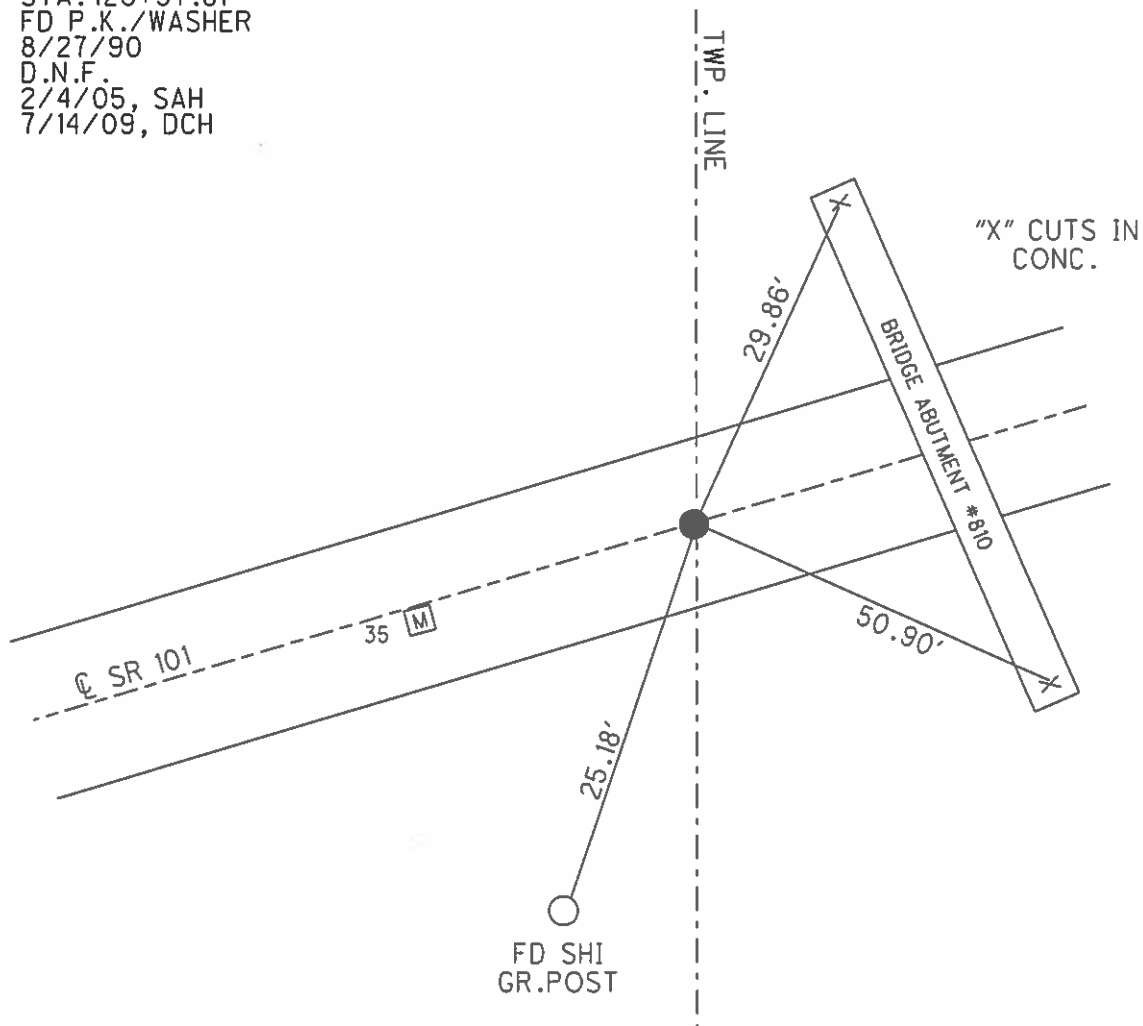
O.D.O.T. DISTRICT 2 SURVEY OFFICE (USE ONLY)

PERSONNEL _____ REFERENCE NO. 35 A SHEET 12 OF 46
 NOTES RIPPLE _____ DATE 8/27/90 ROUTE SR 101
 H.C. BARBOUR WEATHER SUNNY COUNTY SENECA
 R.C. GEYMAN TEMP. 92° TOWNSHIP ADAMS
 _____ SECTION 30
 _____ T 3 N R 16 E

TYPE MONUMENT P.K.NAIL
 ON SURFACE - ~~BELOW~~ ON
 LEFT - ☉ PAV'T - RIGHT ON
- TO - EDGE PAVEMENT
 S.L.M. 425+06
 GRID: NORTHING: - EASTING: -



RECORD: P.O.T.
 STA. 426+97.81
 FD P.K./WASHER
 8/27/90
 D.N.F.
 2/4/05, SAH
 7/14/09, DCH



O.D.O.T. DISTRICT 2 SURVEY OFFICE

PERSONNEL

REFERENCE NO. 35

SHEET 9 OF 41

NOTES RIPPLE

H.G. BARBOUR

R.G. GEYMAN

DATE 8/27/90

WEATHER SUNNY

TEMP. 92°

ROUTE SR #101

COUNTY SENECA

TOWNSHIP PLEASANT & ADAMS

SECTION 25 30

T. 3 N. 15 E. PLEASANT

3 16 ADAMS

TYPE MONUMENT See Notes Below

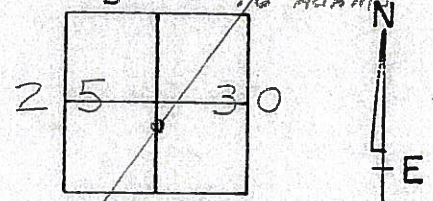
ON SURFACE - BELOW P.O.T. = P.K. ^{MON. BOX}

LEFT - CL PAV'T. - RIGHT CL PAV'T. #35 = 1' RT

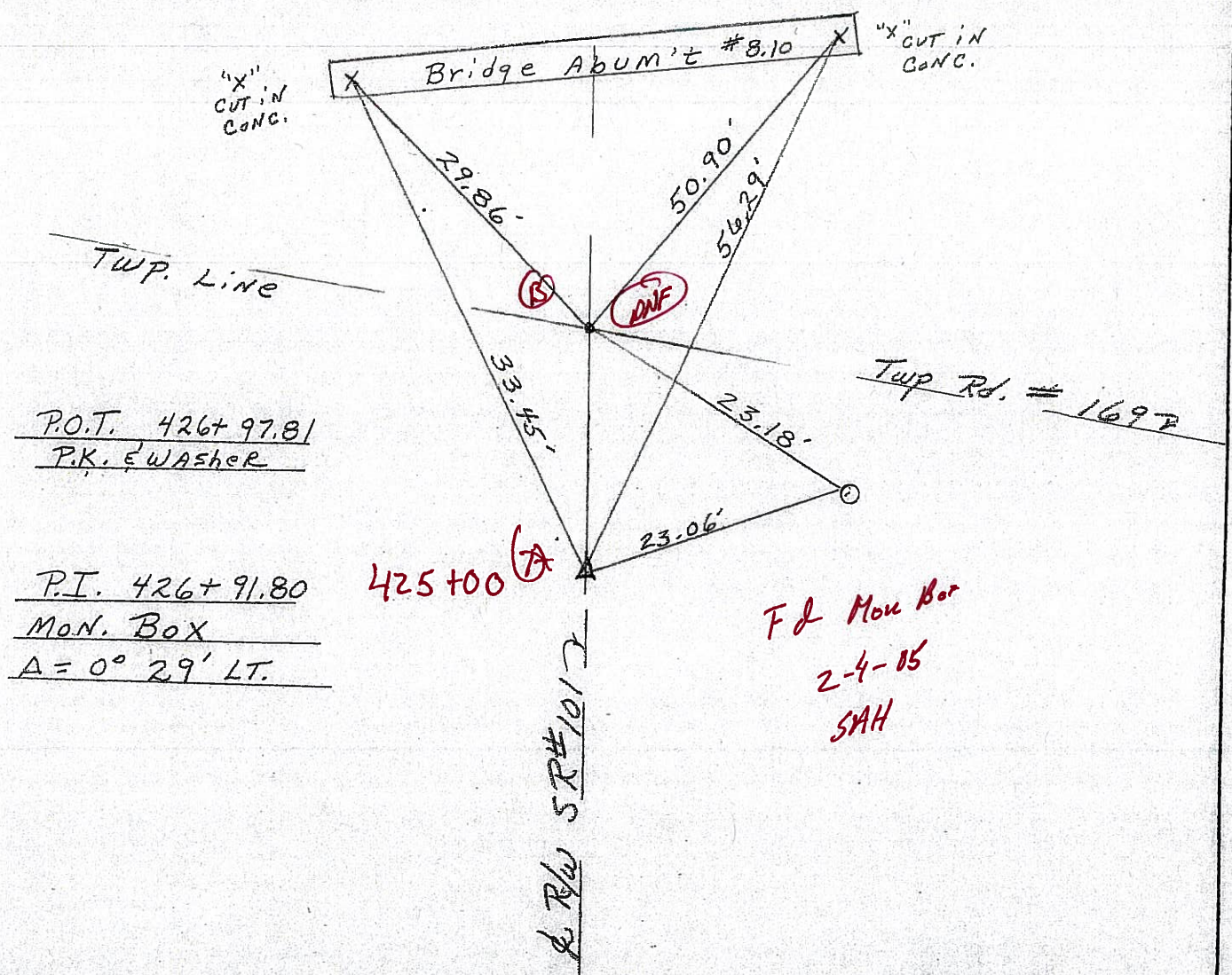
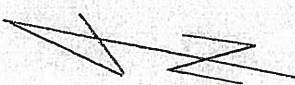
TO EDGE PAVEMENT

S.L.M. A = 425+00

B = 425+06



35-A



O.D.O.T. DISTRICT 2 SURVEY OFFICE

PERSONNEL

REFERENCE NO. 35

SHEET 9 OF 41

NOTES RIPPLE

H.C. BARBOUR

R.G. GEYMAN

DATE 8/27/90

WEATHER SUNNY

TEMP. 92°

ROUTE SR#101

COUNTY SENECA

TOWNSHIP Pleasant Adams

SECTION 25 30

T. 3 N. R. 15 E. Pleasant

3 16 ADAMS

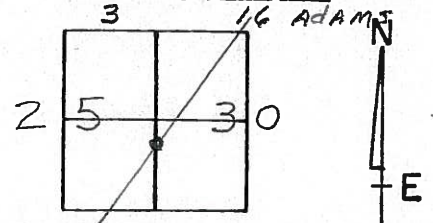
TYPE MONUMENT See Notes Below

ON SURFACE - BELOW P.O.T. = P.K. ^{MON.} P.I. MON. BOX

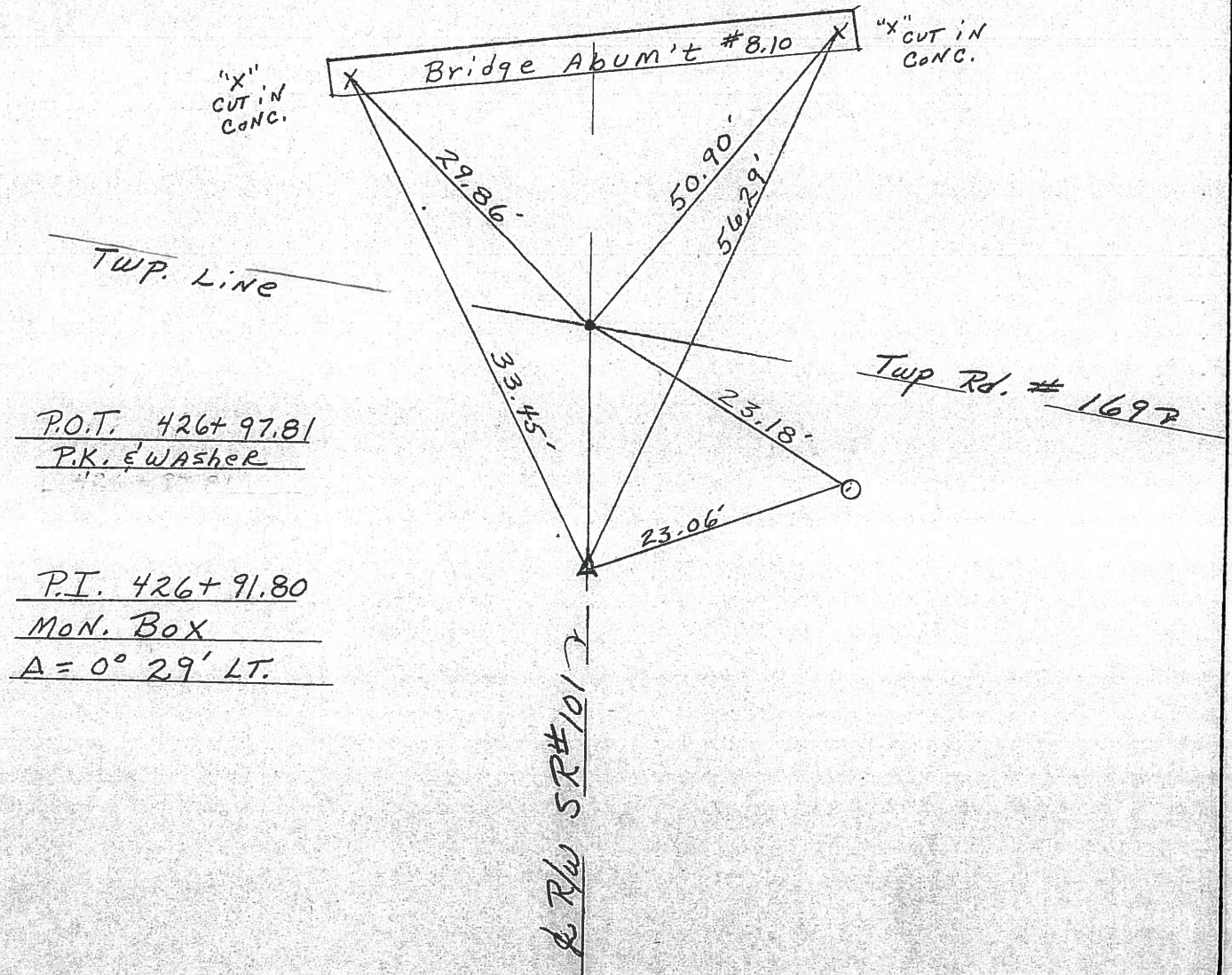
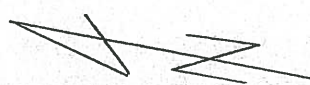
LEFT- & PAV'T. - RIGHT & PAV'T.

TO EDGE PAVEMENT

S.L.M. _____



35-A



County Seneca S.R. 101

Date 6-26-79

Township (Pleasant) & (Adams)

Weather Sunny

Section 25 30

Temp. 75°

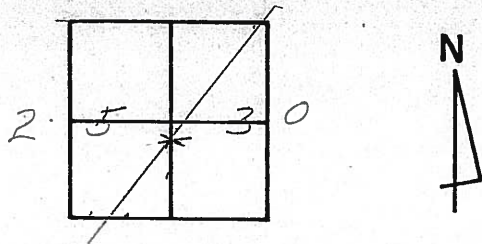
T₃N, R₁₅E Pleasant
3 16 Adams

Personnel Schneider

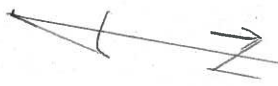
Mosser

Barbour

35-A



~~#40~~



P.O.T.

small cph.

426 + 97.81

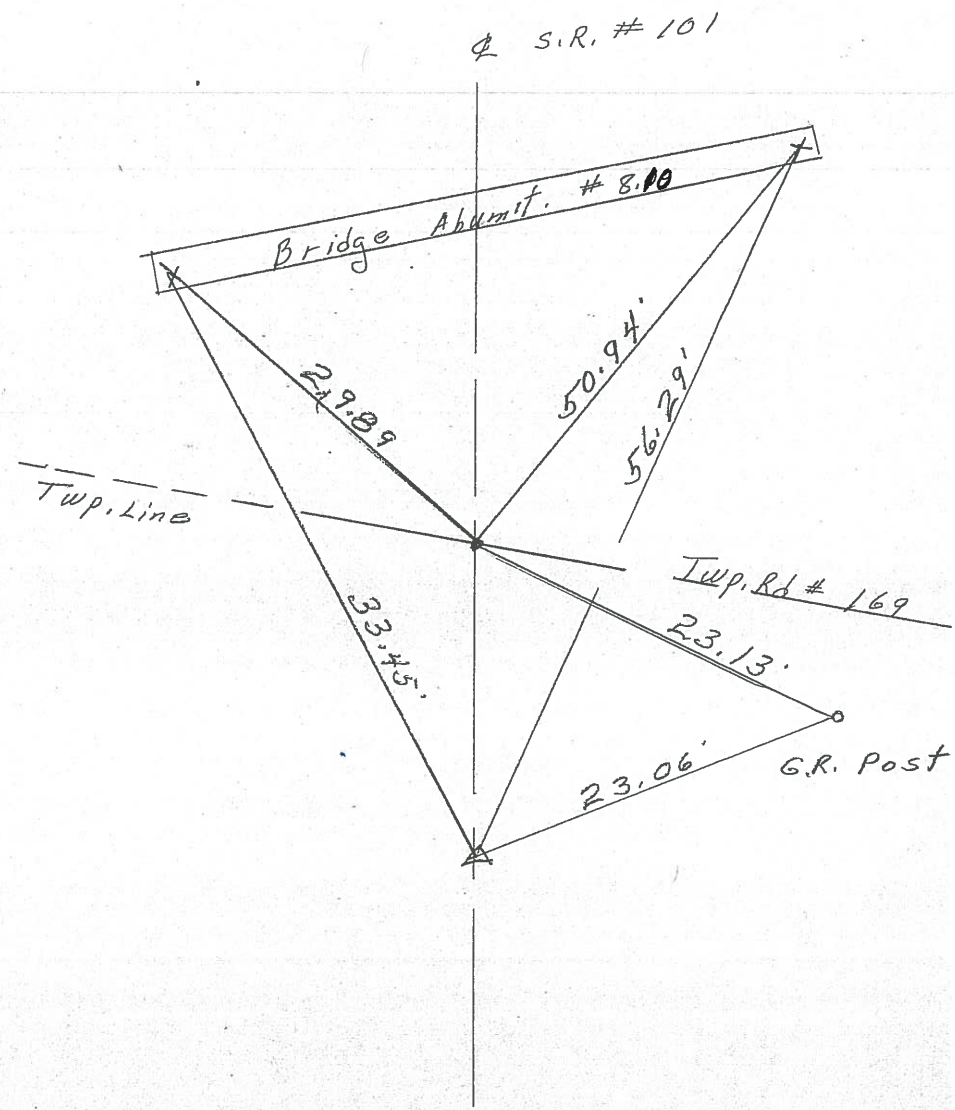
R.K. Nail

P.I.

426 + 91.80

$\Delta = 0^{\circ} 29' \text{ Lt.}$

Mon. Box



PERSONNEL	TITLE	PERSONNEL	TITLE	COUNTY	DATE	WEATHER	TEMP.
Schneider				Seneca	4-8-77	Fair	30° 70
Mosser				S. R. 101			
Barbour				SEC. Br. 8.10			

DESCRIPTION Ties for control points JOB NO. _____

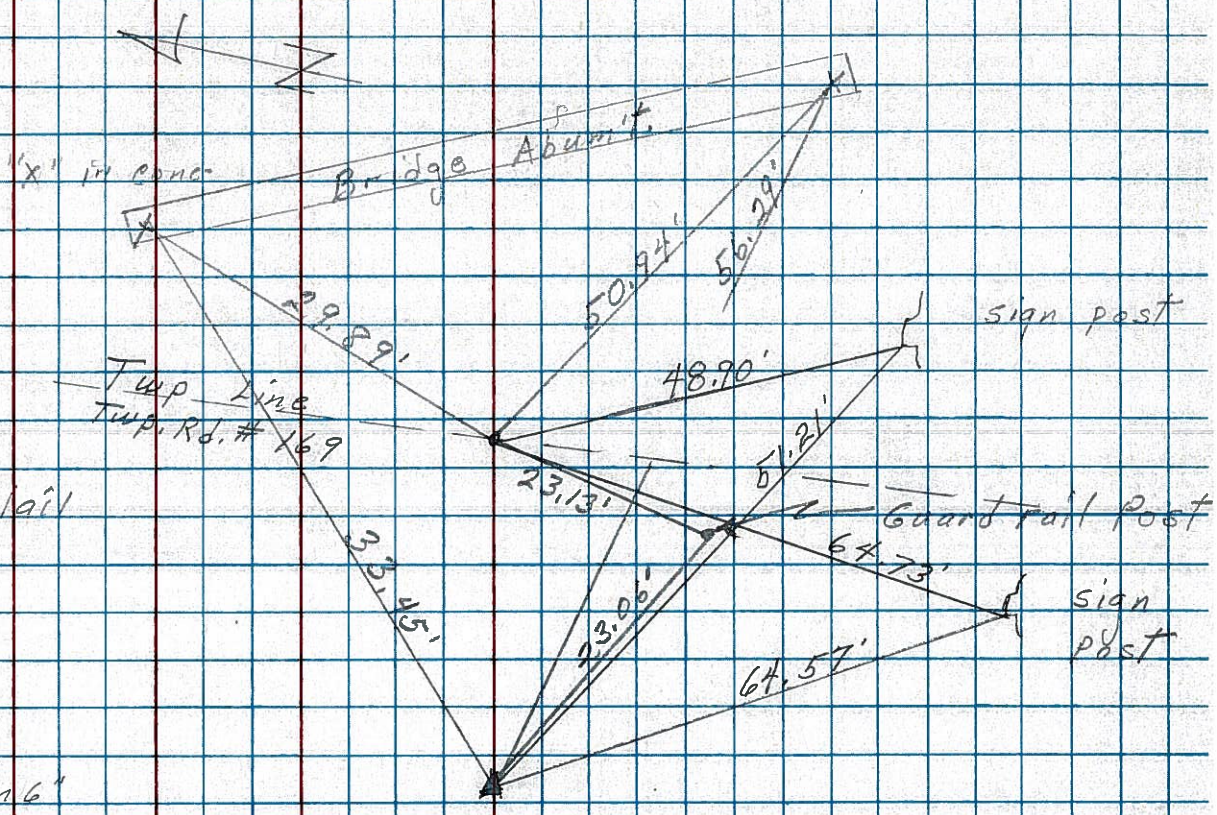
LEFT CENTER LINE RIGHT

35-A

P.O.T.
426+97.81
small spk.
Reset P.K. Nail

P.I.
426+91.80
50. bolt down 6"
 $\Delta = 0^{\circ} 29' \text{ Lt.}$
P.K. on surface
Mon BOX

35



PERSONNEL	TITLE	PERSONNEL	TITLE
Schneider		Vinson	
Mosser			
Barbour			
Geyman			

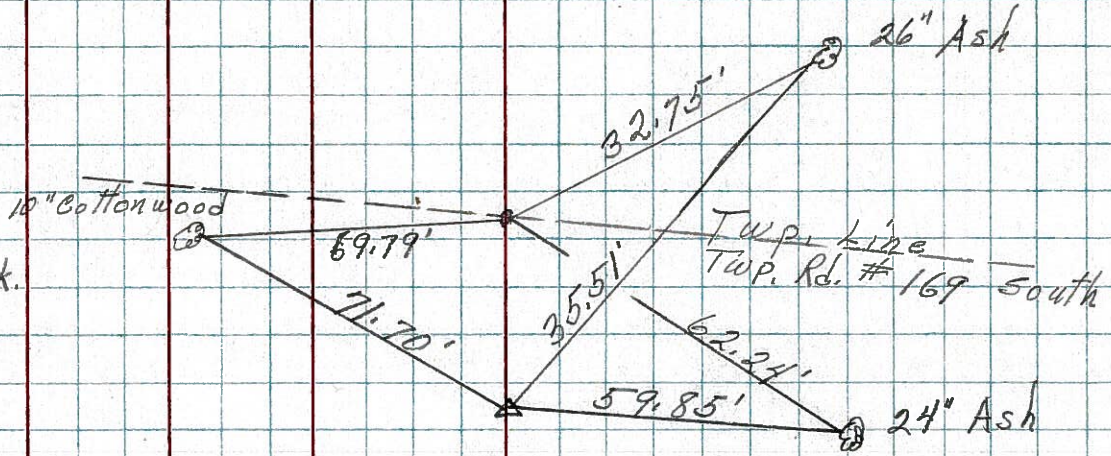
COUNTY Seneca DATE 10-9-71
 S. R. 101 WEATHER Fair
 SEC. Br. #8.10 TEMP. 72'

DESCRIPTION _____ JOB NO. 028270

35-A

~~40~~

P.O.T.
 426+97.81
 set small spk.



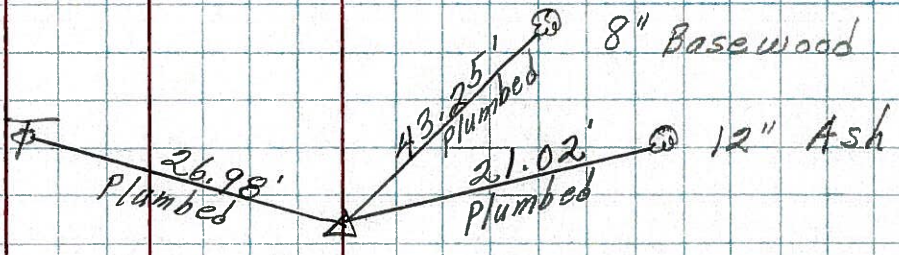
35

P.T.
 426+91.80
 Ed. sp. bolt
 $\Delta = 0^{\circ}29'$ Lt.

34

~~39~~

P.T.
 414+04.19
 set small spk.
 $\Delta = 9^{\circ}48'$ Lt.



33

~~38~~

P.O.T.
 410+41.26
 set P.K. Nail

