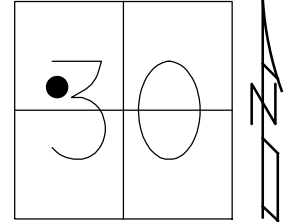


O.D.O.T. DISTRICT 2 SURVEY OFFICE (USE ONLY)

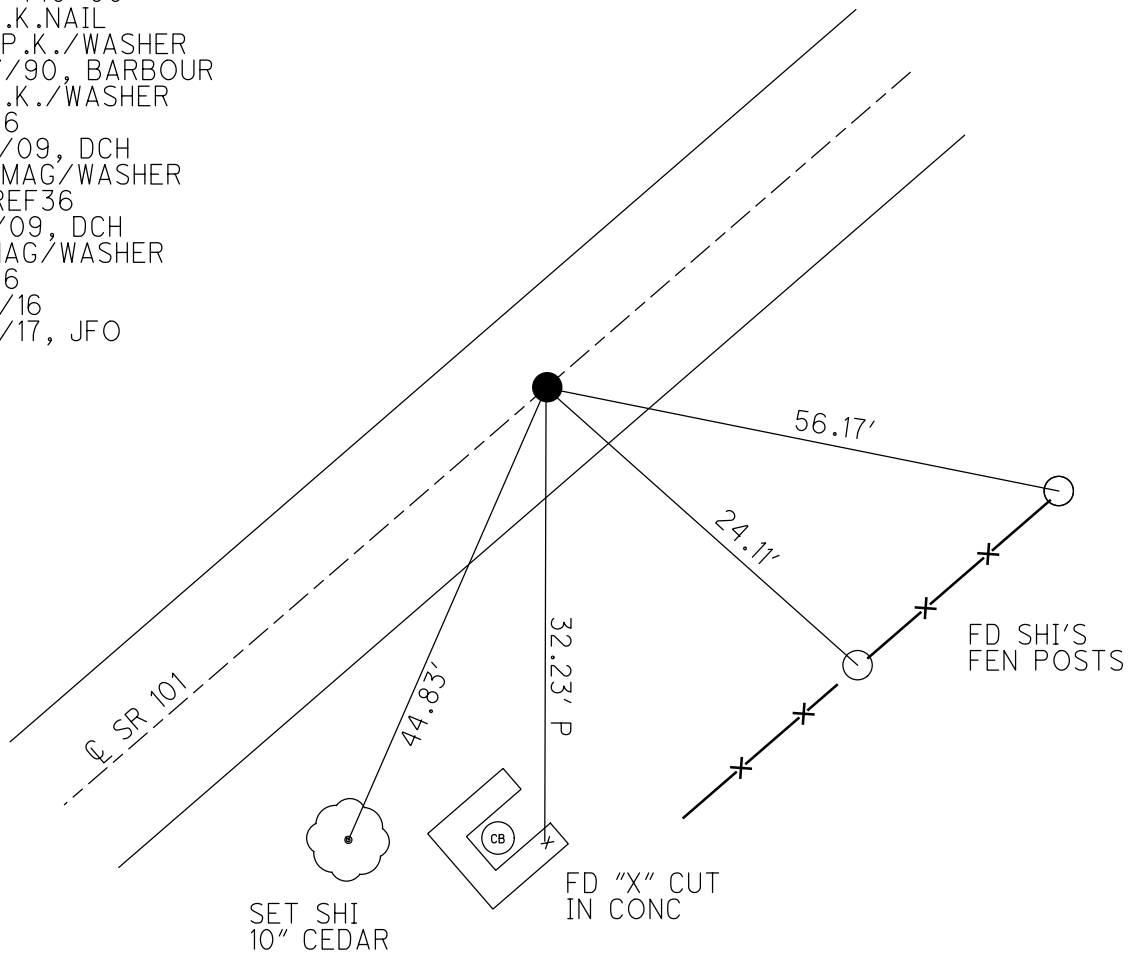
PERSONNEL _____ REFERENCE NO. 36 SHEET 13 OF 46
 NOTES HOMAN DATE 7-14-09 ROUTE SR 101
 H.C. HOMAN WEATHER SUNNY COUNTY SENECA
 R.C. ROUSOS TEMP. 85°F TOWNSHIP ADAMS
 DWG BY MAHLER PID 100787 SECTION 30
 T 3 N R 16 E

TYPE MONUMENT P.K./WASHER
 ON SURFACE - ~~BELOW~~ ON
 OFFSET \varnothing PAVEMENT ON LT : RT
- TO - EDGE PAVEMENT
 STATION: 438+11



HORIZ.DATUM: NAD83 (2011) GEOID: NAVD88-2012A
 GRID: NORTHING: 556296.638 EASTING: 1811336.255

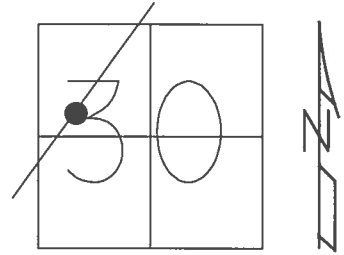
RECORD: P.O.T.
 STA. 440+00
 FD P.K.NAIL
 SET P.K./WASHER
 8/27/90, BARBOUR
 FD P.K./WASHER
 REF36
 7/14/09, DCH
 SET MAG/WASHER
 NEWREF36
 11/4/09, DCH
 FD MAG/WASHER
 REF36
 6/14/16
 9/18/17, JFO



O.D.O.T. DISTRICT 2 SURVEY OFFICE (USE ONLY)

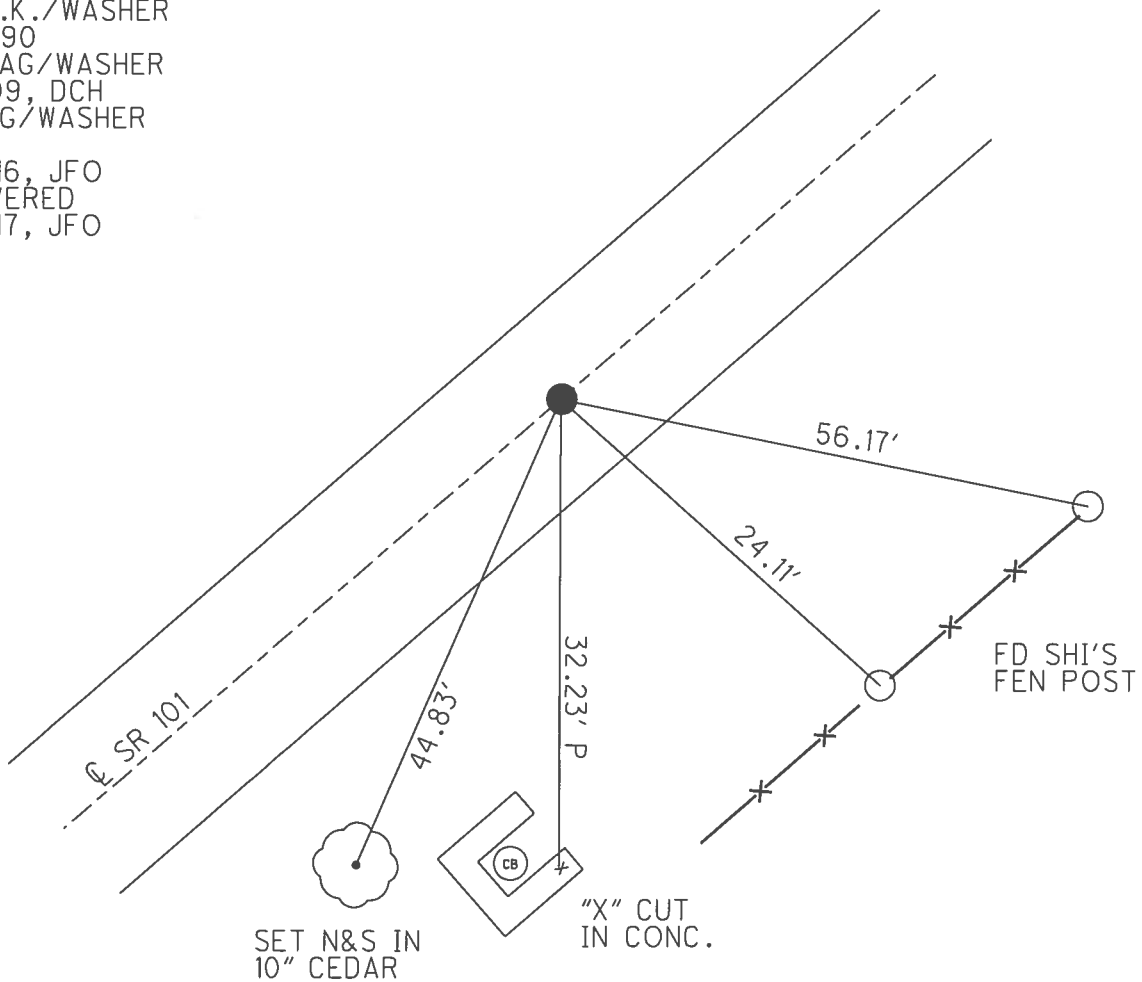
PERSONNEL _____ REFERENCE NO. 36 SHEET 13 OF 46
NOTES HOMAN DATE 7/14/09 ROUTE SR 101
H.C. HOMAN WEATHER SUNNY COUNTY SENECA
R.C. ROUSOS TEMP. 85° TOWNSHIP ADAMS
SECTION 30
T 3 N R 16 E

TYPE MONUMENT P.K./WASHER
ON SURFACE - ~~BELOW~~ ON
LEFT - ☉ PAV'T - RIGHT ON
- TO - EDGE PAVEMENT
S.L.M. 438+11



GRID: NORTHING: 556296.638 EASTING: 1811336.255

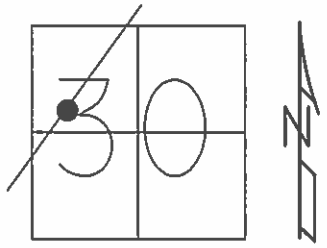
RECORD: P.O.T.
STA. 440+00
FD P.K.NAIL
SET P.K./WASHER
8/27/90
SET MAG/WASHER
11/4/09, DCH
FD MAG/WASHER
REF36
6/14/16, JFO
UNCOVERED
9/18/17, JFO



O.D.O.T. DISTRICT 2 SURVEY OFFICE (USE ONLY)

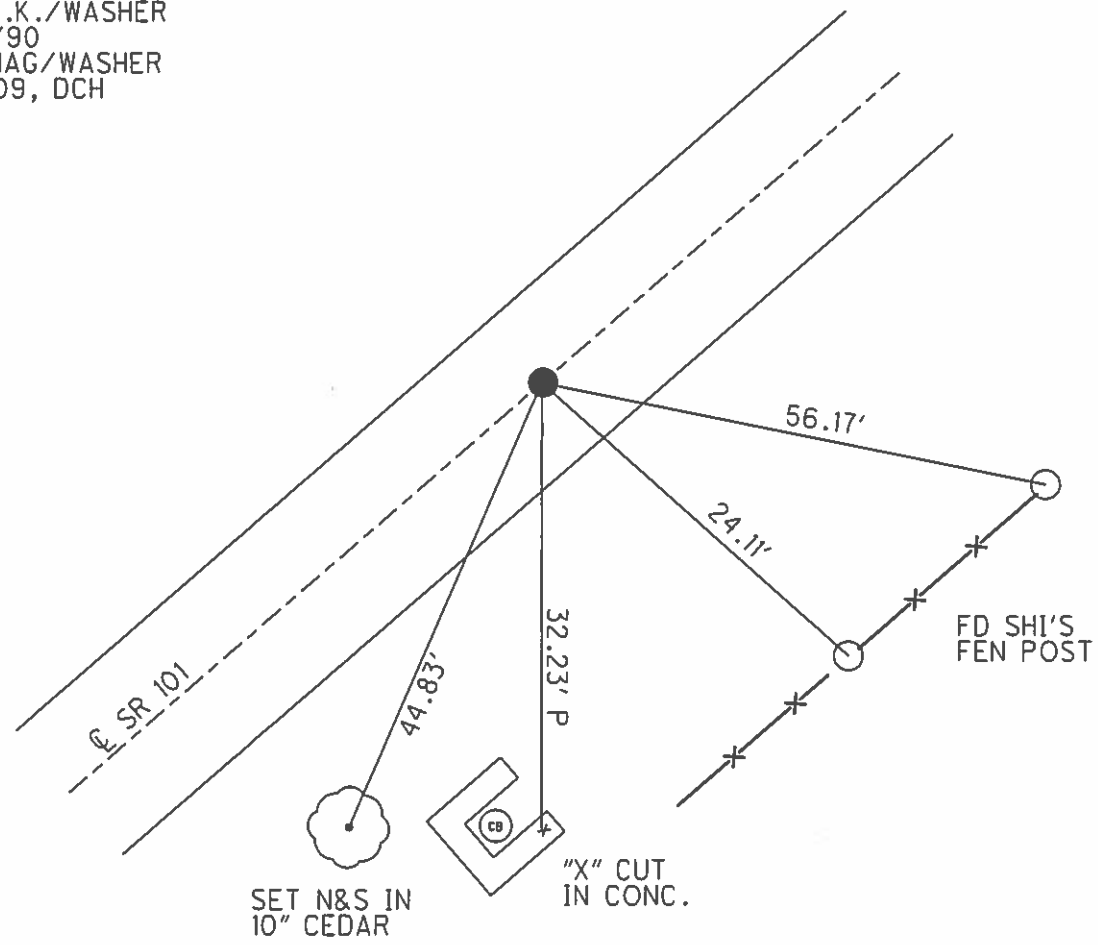
PERSONNEL _____ REFERENCE NO. 36 SHEET 13 OF 46
 NOTES HOMAN DATE 7/14/09 ROUTE SR 101
 H.C. HOMAN WEATHER SUNNY COUNTY SENECA
 R.C. ROUSOS TEMP. 85° TOWNSHIP ADAMS
 _____ SECTION 30
 _____ T 3 N R 16 E

TYPE MONUMENT P.K./WASHER
 ON SURFACE - ~~BELOW~~ ON _____
 LEFT - C PAV'T - RIGHT ON _____
 - TO - EDGE PAVEMENT _____
 S.L.M. 438+11



GRID: NORTHING: 556296.682 EASTING: 1808942.320

RECORD: P.O.T.
 STA. 440+00
 FD P.K.NAIL
 SET P.K./WASHER
 8/27/90
 SET MAG/WASHER
 11/4/09, DCH



O.D.O.T. DISTRICT 2 SURVEY OFFICE

PERSONNEL

REFERENCE NO. 36

SHEET 10 OF 41

NOTES RIPPLE

H.C. BARBOUR

DATE 8/27/90

ROUTE SR. #101

R.C. GEYMAN

WEATHER SUNNY

COUNTY SENECA

TEMP. 92°

TOWNSHIP ADAMS

SECTION 30

T3 N R 16 E

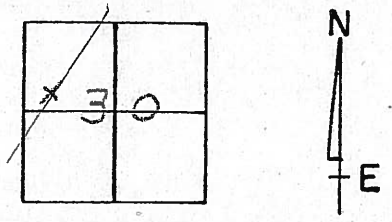
TYPE MONUMENT SET P.K. & WASHER

ON SURFACE - BELOW P.K. NAIL

LEFT- & PAV'T. - RIGHT & PAV'T.

TO EDGE PAVEMENT

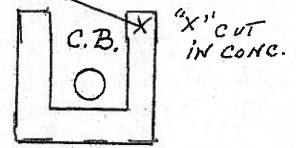
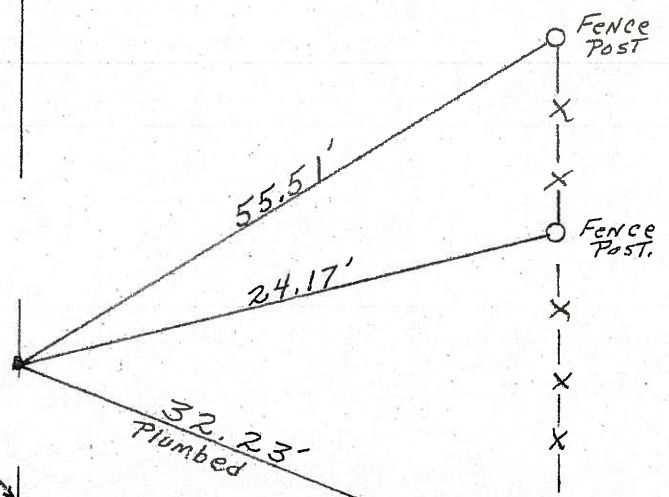
S.L.M. _____



438+11

P.O.T.
440+00

& RW SR. #101



Need Traffic Control

O.D.O.T. DISTRICT 2 SURVEY OFFICE

PERSONNEL

REFERENCE NO. 36

SHEET 10 OF 41

NOTES Ripple

H.C. BARBOUR

DATE 8/27/90

ROUTE SR. #101

R.G. Geyman

WEATHER SUNNY

COUNTY Seneca

TEMP. 92°

TOWNSHIP Adams

SECTION 30

T3 N R16 E

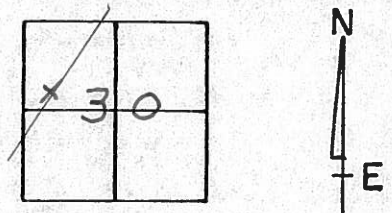
TYPE MONUMENT set P.K. & washer

ON SURFACE - BELOW P.K. Nail

LEFT - CL PAV'T. - RIGHT R. Pav'T.

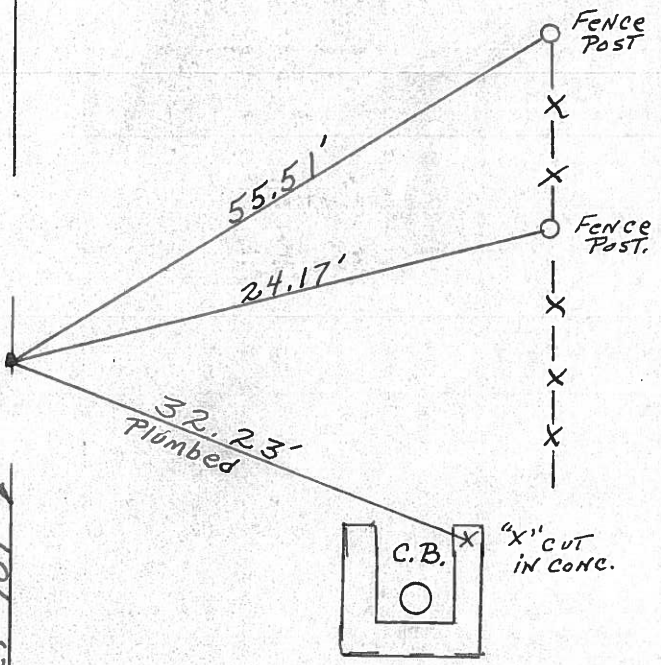
TO EDGE PAVEMENT

S.L.M. _____



P.O.T.
440+00

CL R/W SR. #101



County Seneca S.R. 101

Date 6-26-79

Township Adams

Weather Fair

Section 30

Temp. 75°

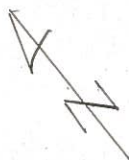
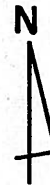
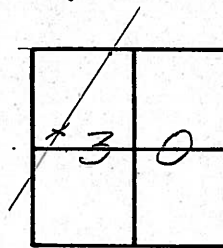
T 3 N, R 16 E

Personnel Schneider

Mosser

Barbour

36



~~31~~

☒ S.R. # 101

P.O.T.

440+00

P.K. Nail

1 1/2" down

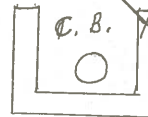


16.37'

24.28'

32.24'

fence post

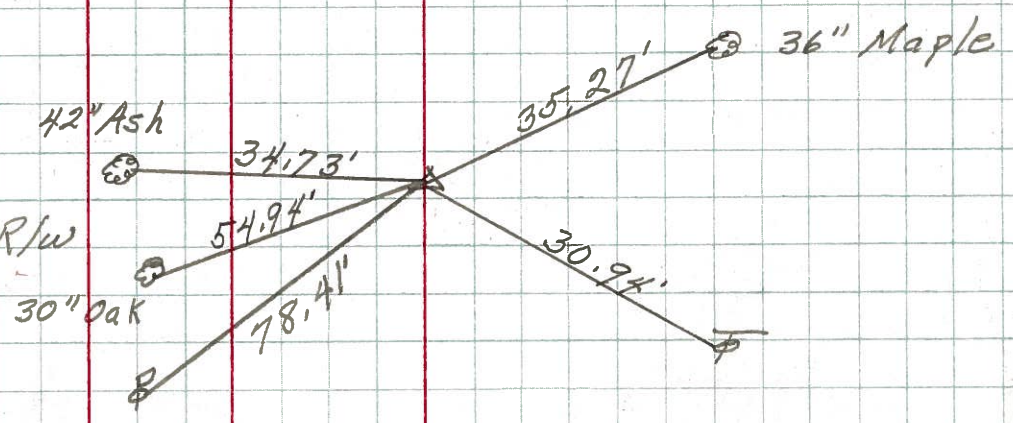


PERSONNEL	TITLE	PERSONNEL	TITLE	COUNTY	DATE
Schneider		Vinson		Seneca	9-29-71
Mosser				S. R. 101	WEATHER Hot
Barbour				SEC. Br. # 8.10	TEMP. 85°
Geyman					JOB NO. 02827(0)
DESCRIPTION				Ties for Control Points	

LEFT CENTER LINE RIGHT

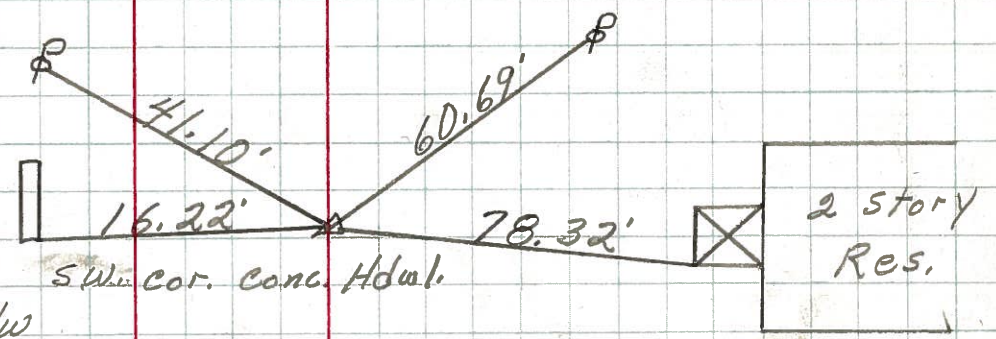
38

P.I. ~~43~~
 469+ 42.37
 small spk. on & R/W



37

P.I. ~~42~~
 447+ 43.01
 Δ = 1° 31' 30" RT
 1/2" Iron pin on & R/W
 2" down



36

P.O.T. ~~41~~
 440+00
 set P.K. Nail

