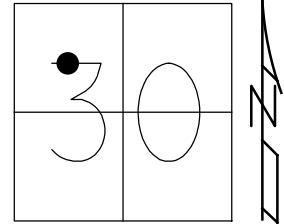


O.D.O.T. DISTRICT 2 SURVEY OFFICE (USE ONLY)

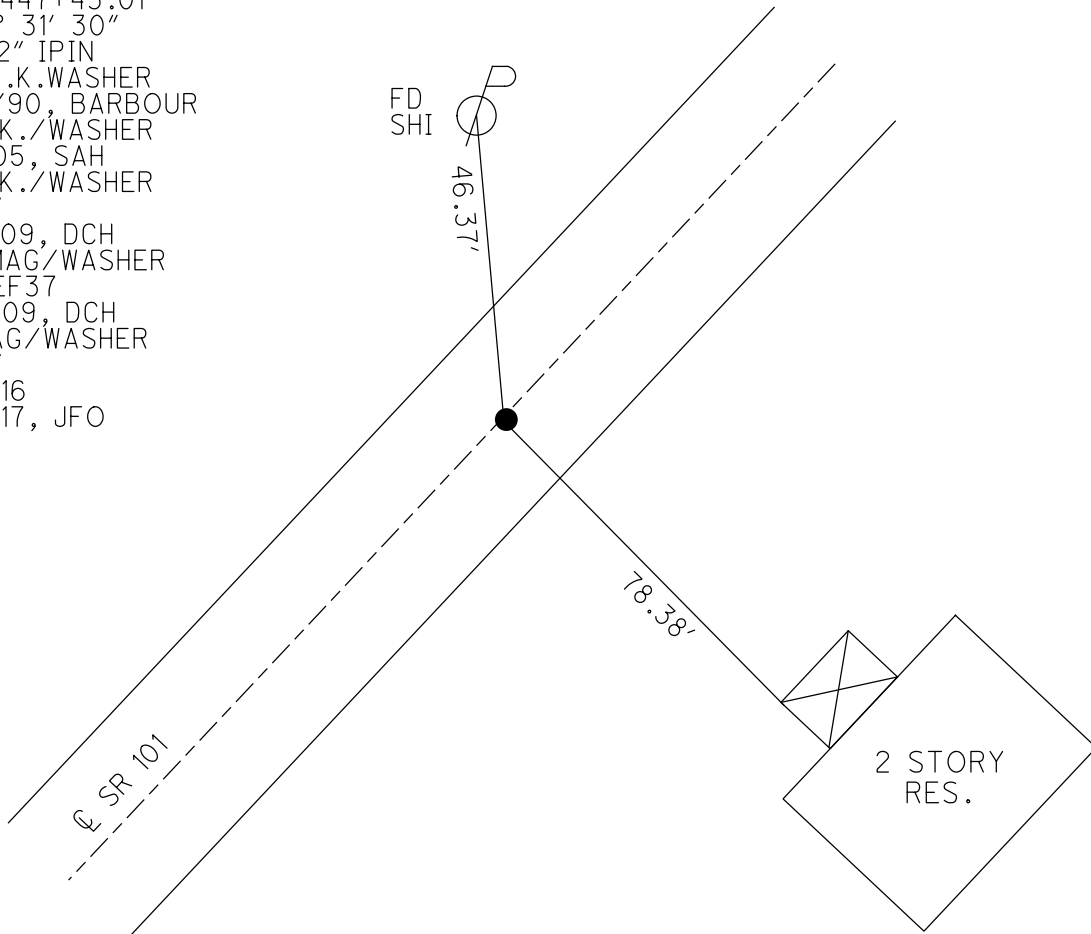
PERSONNEL _____ REFERENCE NO. 37 SHEET 14 OF 46
 NOTES HOMAN DATE 7-14-09 ROUTE SR 101
 H.C. HOMAN WEATHER SUNNY COUNTY SENECA
 R.C. ROUSOS TEMP. 85°F TOWNSHIP ADAMS
 DWG BY MAHLER PID 100787 SECTION 30
 T 3 N R 16 E

TYPE MONUMENT P.K./WASHER
 ON SURFACE - ~~BELOW~~ ON
 OFFSET ☐ PAVEMENT ON LT : RT
- TO - EDGE PAVEMENT
 STATION: 445+55



HORIZ.DATUM: NAD83 (2011) GEOID: NAVD88-2012A
 GRID: NORTHING: 556869.989 EASTING: 1811808.728

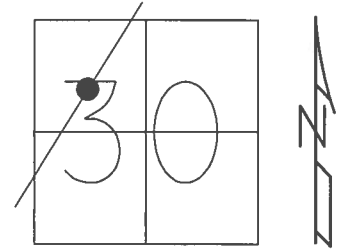
RECORD: P.I.
 STA. 447+43.01
 $\Delta = 1^\circ 31' 30''$
 FD 1/2" IPIN
 SET P.K.WASHER
 8/27/90, BARBOUR
 FD P.K./WASHER
 2/4/05, SAH
 FD P.K./WASHER
 REF37
 7/14/09, DCH
 SET MAG/WASHER
 NEWREF37
 10/8/09, DCH
 FD MAG/WASHER
 REF37
 6/14/16
 9/18/17, JFO



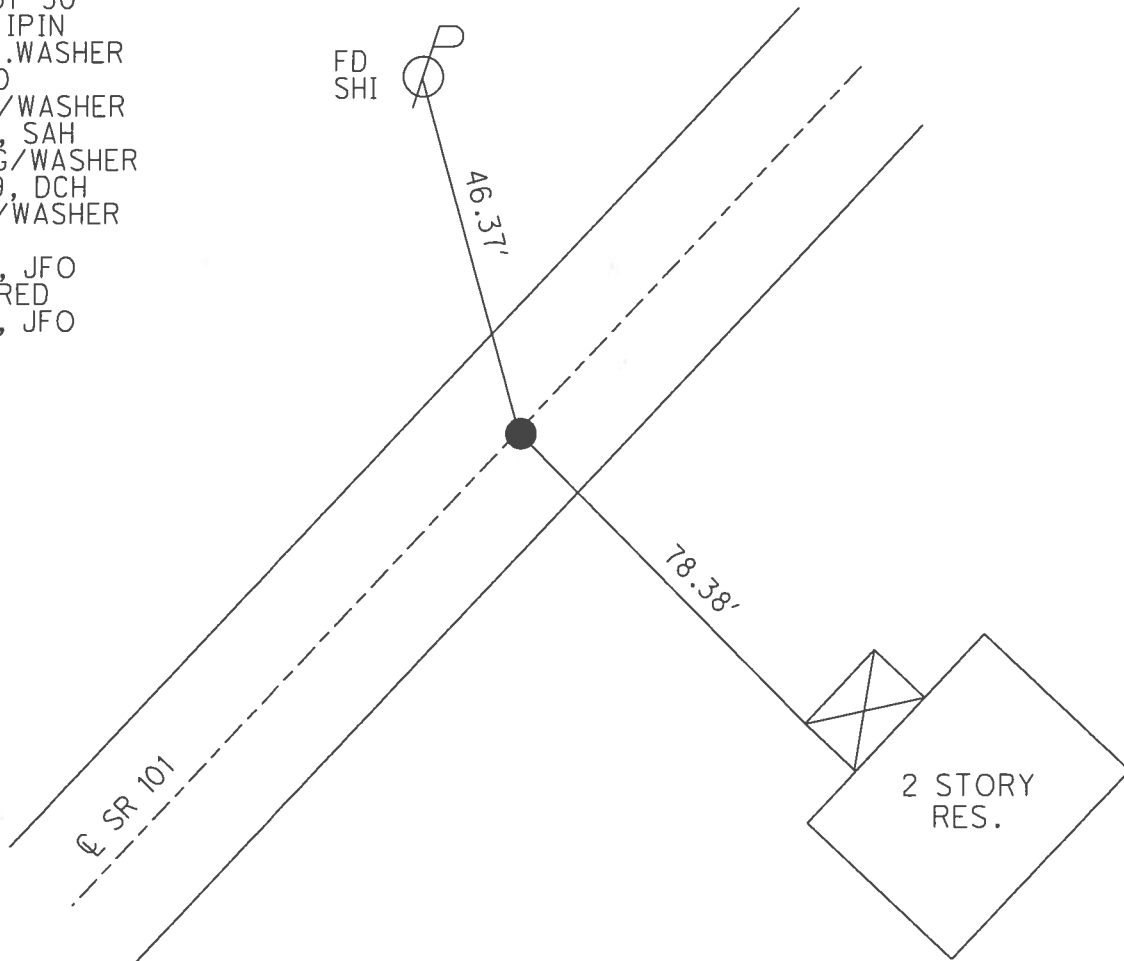
O.D.O.T. DISTRICT 2 SURVEY OFFICE (USE ONLY)

PERSONNEL _____ REFERENCE NO. 37 SHEET 14 OF 46
 NOTES HOMAN DATE 7/14/09 ROUTE SR 101
 H.C. HOMAN WEATHER SUNNY COUNTY SENECA
 R.C. ROUSOS TEMP. 85° TOWNSHIP ADAMS
 _____ SECTION 30
 _____ T 3 N R 16 E

TYPE MONUMENT P.K./WASHER
 ON SURFACE - ~~BELOW~~ ON
 LEFT - ☉ PAV'T - RIGHT ON
TO EDGE PAVEMENT
 S.L.M. 445+55
 GRID: NORTHING: 556869.989 EASTING: 1811808.728



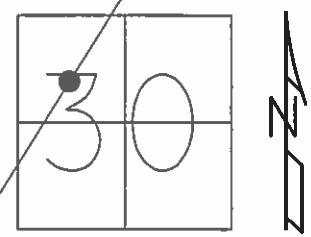
RECORD: P.I.
 STA. 447+43.01
 $\Delta = 1^\circ 31' 30''$
 FD 1/2" IPIN
 SET P.K.WASHER
 8/27/90
 FD P.K./WASHER
 2/4/05, SAH
 SET MAG/WASHER
 10/8/09, DCH
 FD MAG/WASHER
 REF37
 6/14/16, JFO
 UNCOVERED
 9/18/17, JFO



O.D.O.T. DISTRICT 2 SURVEY OFFICE (USE ONLY)

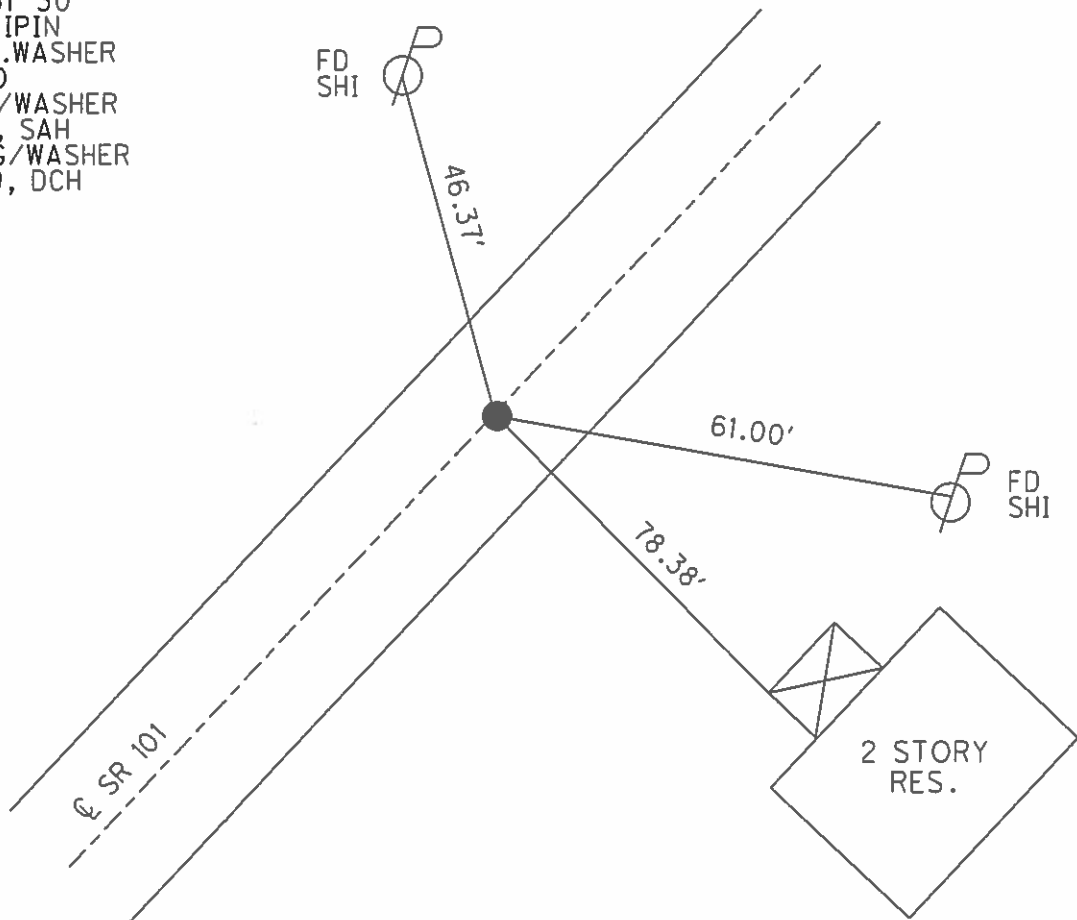
PERSONNEL	REFERENCE NO.	37	SHEET	14	OF	46
NOTES	HOMAN	DATE	7/14/09	ROUTE	SR 101	
H.C.	HOMAN	WEATHER	SUNNY	COUNTY	SENECA	
R.C.	ROUSOS	TEMP.	85°	TOWNSHIP	ADAMS	
				SECTION	30	
				T	3	N
				R	16	E

TYPE MONUMENT P.K./WASHER
 ON SURFACE - ~~BELOW~~ ON
 LEFT - ☉ PAV'T - RIGHT ON
 TO EDGE PAVEMENT
 S.L.M. 445+55



GRID: NORTHING: 556870.068 EASTING: 1811808.699

RECORD: P.I.
 STA. 447+43.01
 $\Delta = 1^{\circ} 31' 30''$
 FD 1/2" IPIN
 SET P.K.WASHER
 8/27/90
 FD P.K./WASHER
 2/4/05, SAH
 SET MAG/WASHER
 10/8/09, DCH



O.D.O.T. DISTRICT 2 SURVEY OFFICE

PERSONNEL

REFERENCE NO. 37

SHEET 11 OF 41

NOTES Ripple

H.C. BARBOUR

DATE 8/27/90

ROUTE SR#101

R.C. Geyman

WEATHER SUNNY

COUNTY Seneca

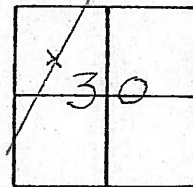
TEMP. 92°

TOWNSHIP Adams

SECTION 30

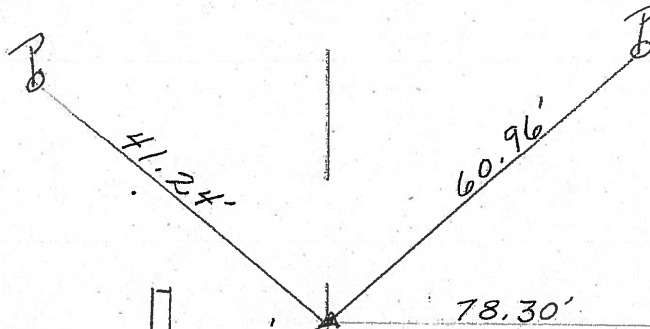
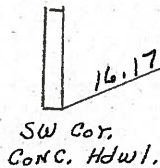
T3 N R 16 E

TYPE MONUMENT Set P.K. & Washer
ON SURFACE - BELOW 1/2" Iron Pin on & R/W
LEFT- & PAV'T. - RIGHT & PAV'T.
____ TO ____ EDGE PAVEMENT
S.L.M. _____



445+55

P.I. 447+43.01
 $\Delta = 1^{\circ} 31' 30''$ RT.



Fd
2-21-05
SATT

& R/W SR #101

O.D.O.T. DISTRICT 2 SURVEY OFFICE

PERSONNEL

REFERENCE NO. 37

SHEET 11 OF 41

NOTES Ripple

H.C. Barbour

DATE 8/27/90

ROUTE SR.#101

R.G. Geyman

WEATHER SUNNY

COUNTY Seneca

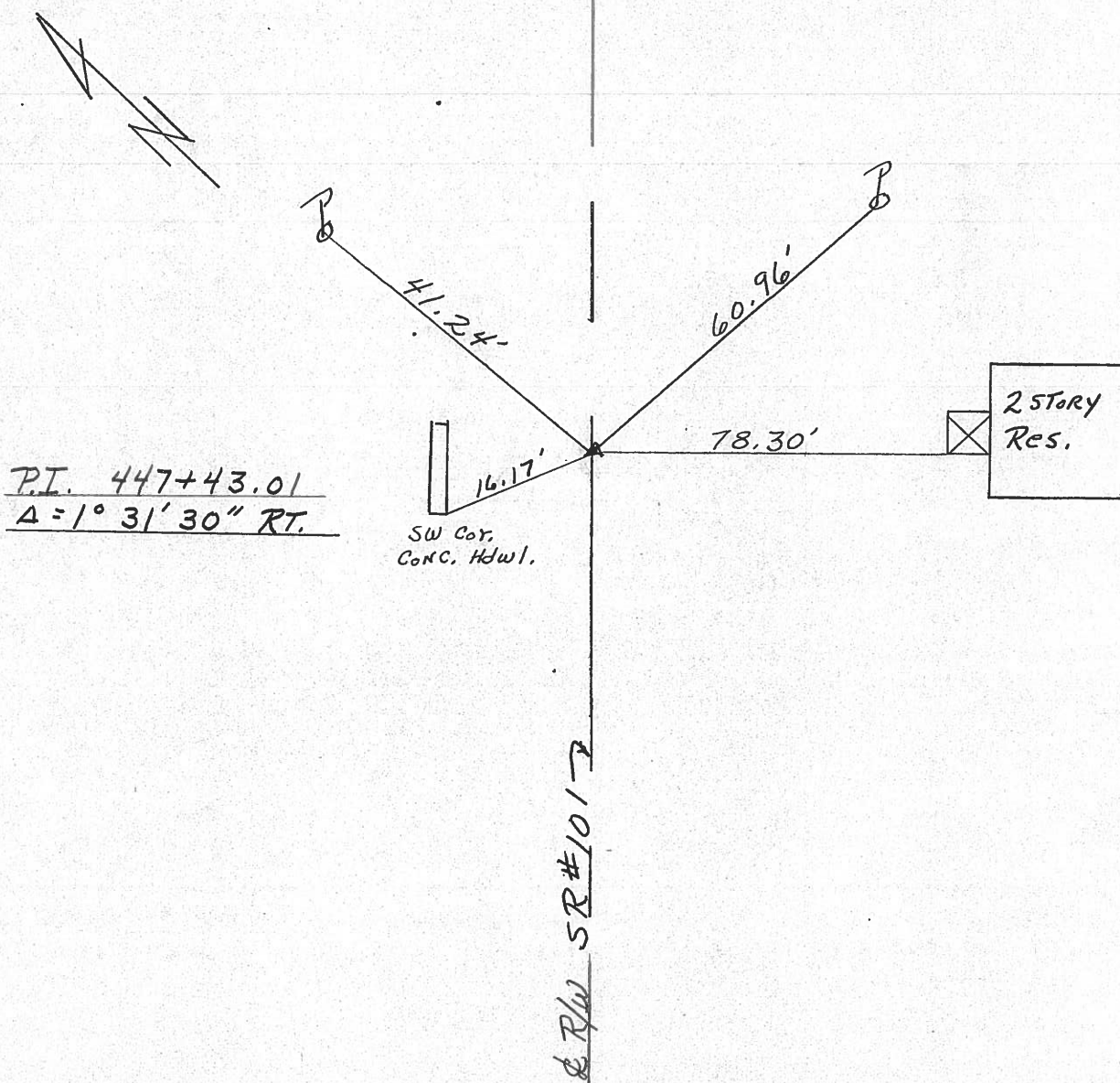
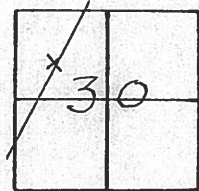
TEMP. 92°

TOWNSHIP ADAMS

SECTION 30

T3 N R 16 E

TYPE MONUMENT Set P.K. & Washer
 ON SURFACE - BELOW 1/2" IRON PIN ON & R/W
 LEFT- & PAV'T. - RIGHT & PAV'T.
 TO _____ EDGE PAVEMENT
 S.L.M. _____



County Seneca S.R. 101

Date 6-26-79

Township Adams

Weather Fair

Section 30

Temp. 75°

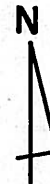
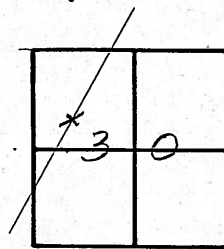
T3N, R16E

Personnel Schneider

Mosser

Barbour

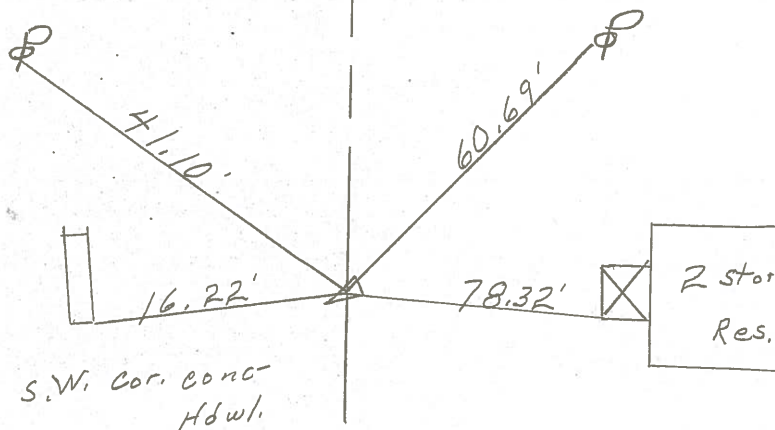
(37)



~~#37~~



¢ S.R. #101



P.I.

447 + 43.01

$\Delta = 1^{\circ} 31' 30''$ Rt.

1/2" iron pin on ¢ R/W

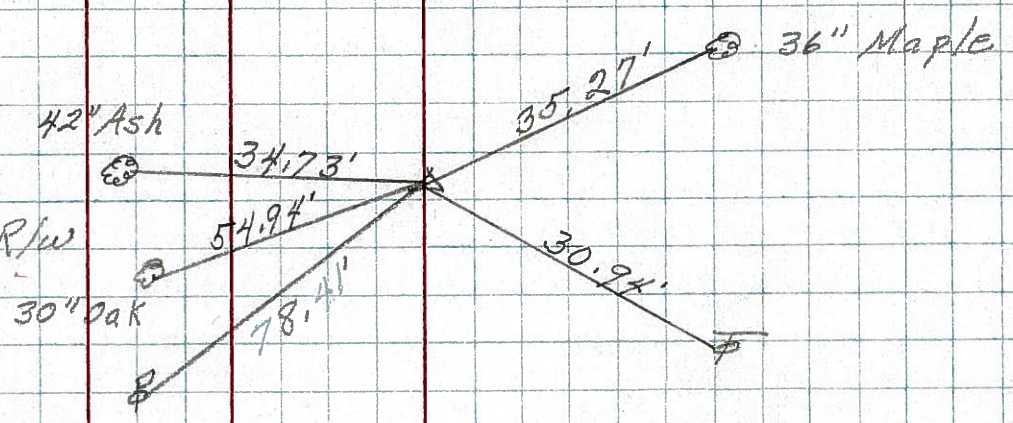
4" down

PERSONNEL	TITLE	PERSONNEL	TITLE	COUNTY	DATE
Schneider		Vinson		Seneca	9-29-71
Mosser				S. R. 101	WEATHER Hot
Barbour				SEC. Br. # 8.10	TEMP. 85°
Geyman					JOB NO. 02827(0)

DESCRIPTION Ties for Control Points

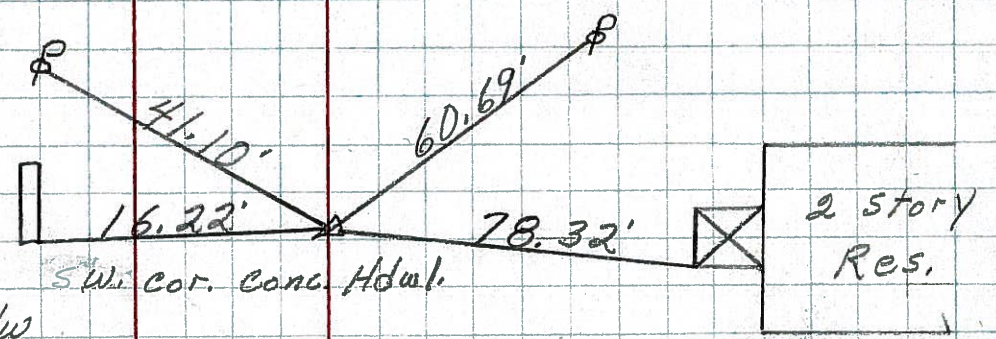
38

~~43~~
 P.I.
 469+ 42.37
 small spk. on & R/w



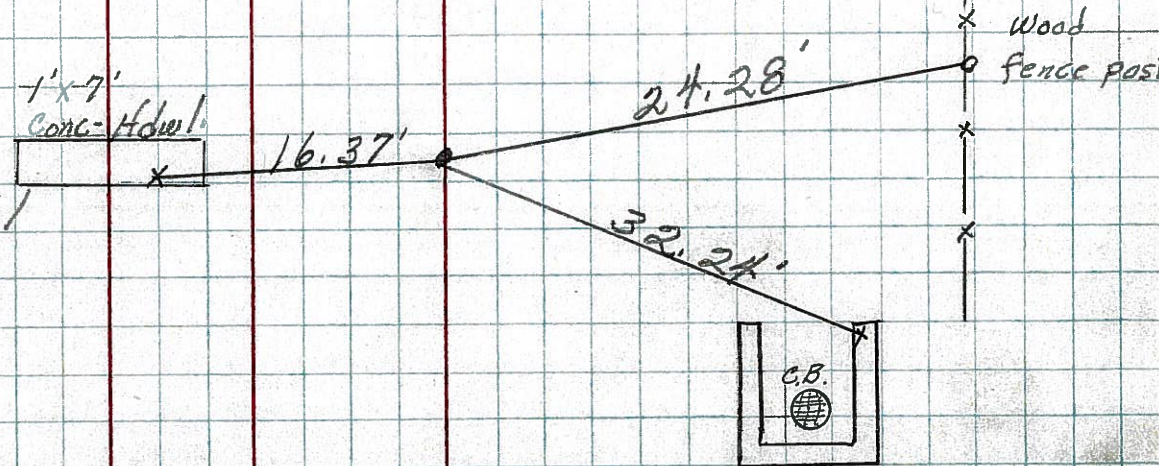
37

~~42~~
 P.I.
 447+ 43.01
 Δ = 1031' 30" RT
 1/2" Iron pin on & R/w
 2" down



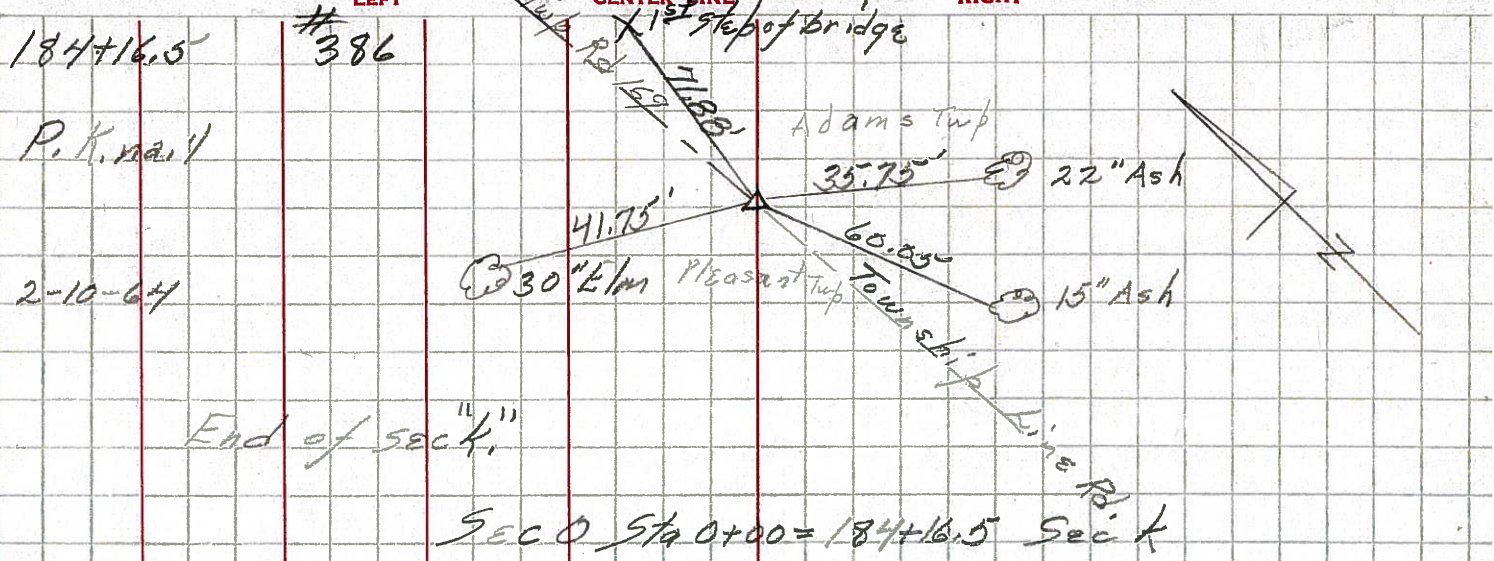
36

~~41~~
 P.O.T.
 440+00
 set P.K. Nail



PERSONNEL	TITLE	PERSONNEL	TITLE	COUNTY	DATE	WEATHER	TEMP
Krabi'll				Seneca			
Kowaleski				S. R. 101			
Gayman							
Bruggman							

35

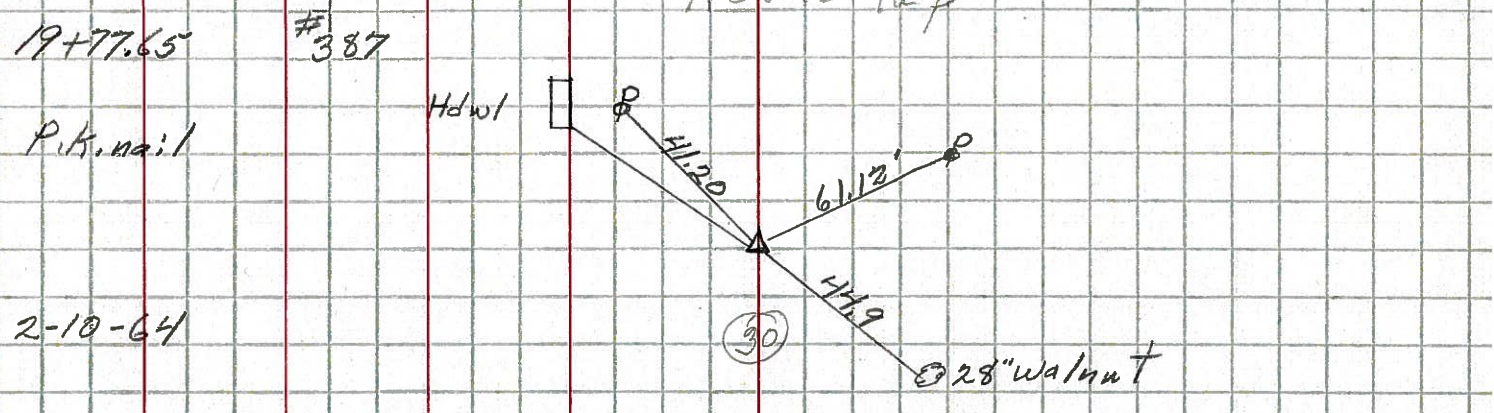


End of sec "k"

SEC 0 Sta 0+00 = 184+16.5 Sec k

Start of sec "o"

37



38

