

O.D.O.T. DISTRICT 2 SURVEY OFFICE (USE ONLY)

PERSONNEL

REFERENCE NO. 39

SHEET 17 OF 46

NOTES HOMAN

DATE 7-21-09

ROUTE SR 101

H.C. HOMAN

WEATHER SUNNY

COUNTY SENECA

R.C. ROUSOS

TEMP. 75°F

TOWNSHIP ADAMS

SECTION 19

DWG BY MAHLER

PID 100787

T 3 N R 16 E

TYPE MONUMENT P.K./WASHER

ON SURFACE - ~~BELOW~~ ON

OFFSET Q PAVEMENT ON LT : RT

- TO - EDGE PAVEMENT

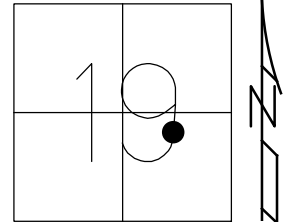
STATION: 494+89

HORZ.DATUM: NAD83 (2011)

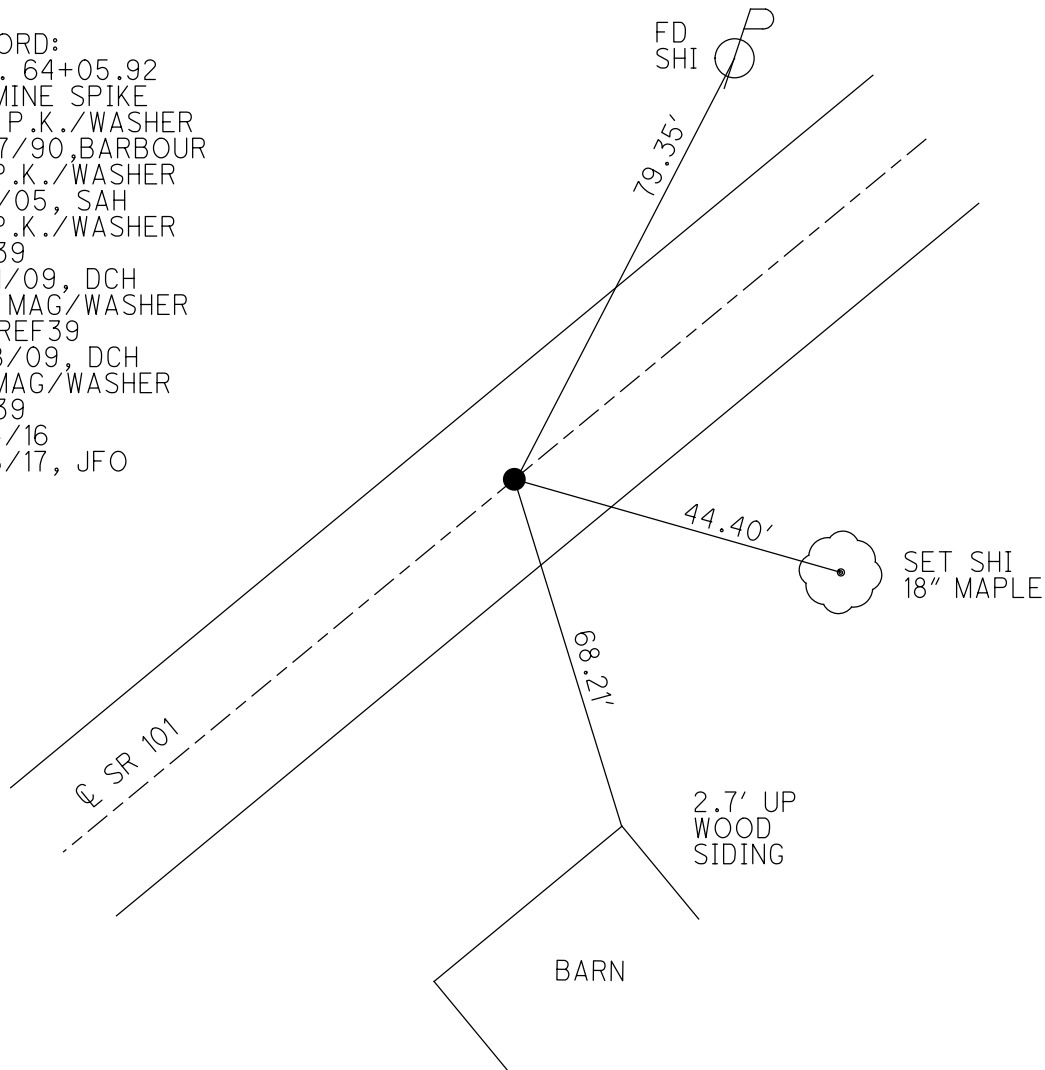
GEOID: NAVD88-2012A

GRID: NORTHING: 560572.335

EASTING: 1815060.100



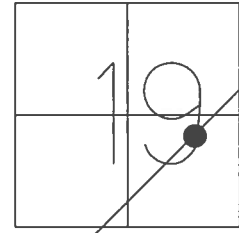
RECORD:
 STA. 64+05.92
 FD MINE SPIKE
 SET P.K./WASHER
 8/27/90, BARBOUR
 FD P.K./WASHER
 2/4/05, SAH
 FD P.K./WASHER
 REF39
 7/21/09, DCH
 SET MAG/WASHER
 NEWREF39
 10/8/09, DCH
 FD MAG/WASHER
 REF39
 6/14/16
 9/18/17, JFO



O.D.O.T. DISTRICT 2 SURVEY OFFICE (USE ONLY)

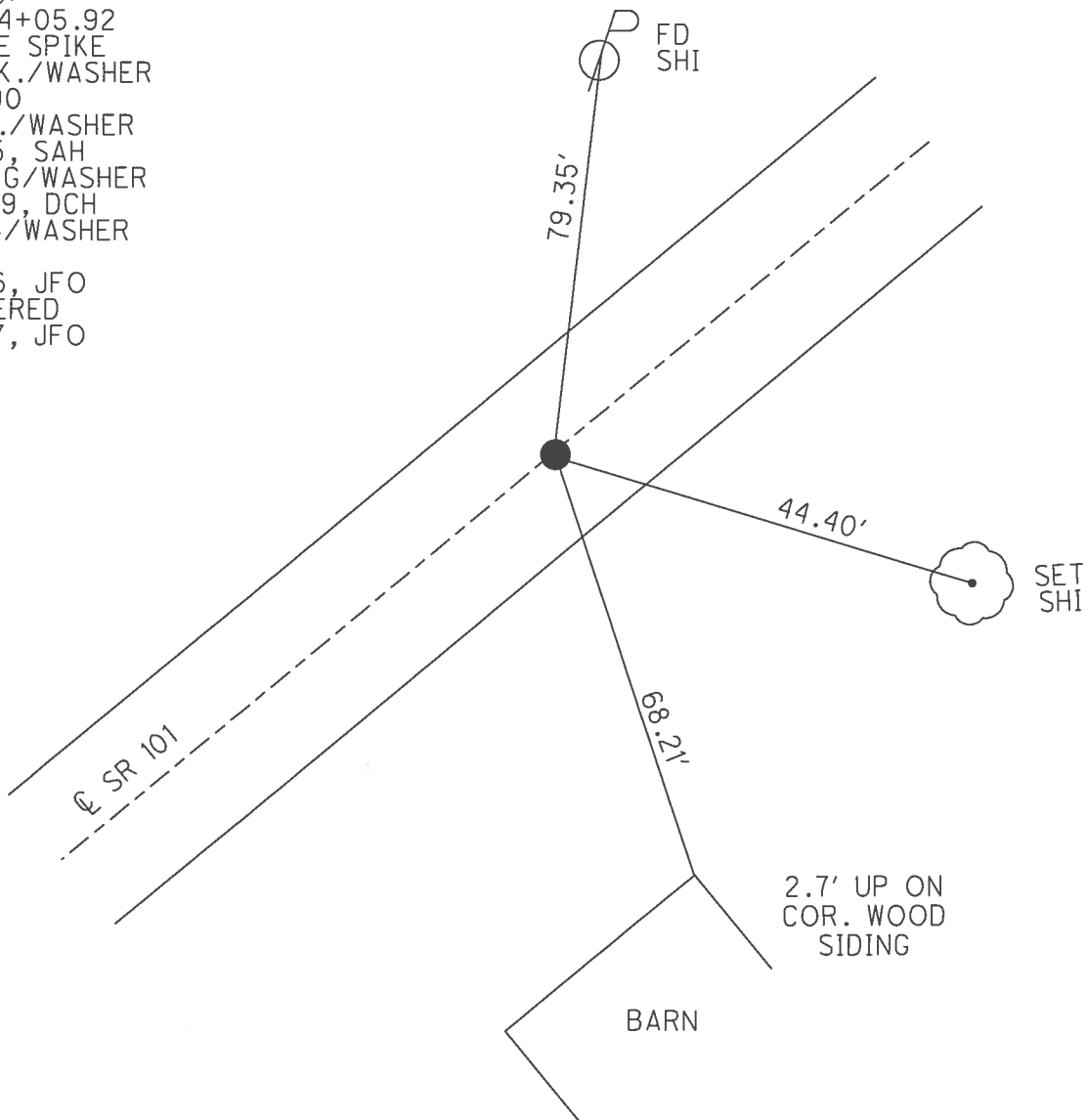
PERSONNEL _____ REFERENCE NO. 39 SHEET 17 OF 46
 NOTES HOMAN DATE 7/21/09 ROUTE SR 101
 H.C. HOMAN WEATHER SUNNY COUNTY SENECA
 R.C. ROUSOS TEMP. 75° TOWNSHIP ADAMS
 _____ SECTION 19
 _____ T 3 N R 16 E

TYPE MONUMENT P.K./WASHER
 ON SURFACE - ~~BELOW~~ ON
 LEFT - C PAV'T - RIGHT ON
- TO - EDGE PAVEMENT
 S.L.M. 494+89



GRID: NORTHING: 560572.335 EASTING: 1815060.100

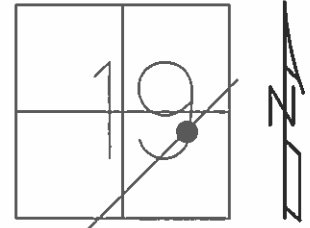
RECORD:
 STA. 64+05.92
 FD MINE SPIKE
 SET P.K./WASHER
 8/27/90
 FD P.K./WASHER
 2/4/05, SAH
 SET MAG/WASHER
 10/8/09, DCH
 FD MAG/WASHER
 REF39
 6/14/16, JFO
 UNCOVERED
 9/18/17, JFO



O.D.O.T. DISTRICT 2 SURVEY OFFICE (USE ONLY)

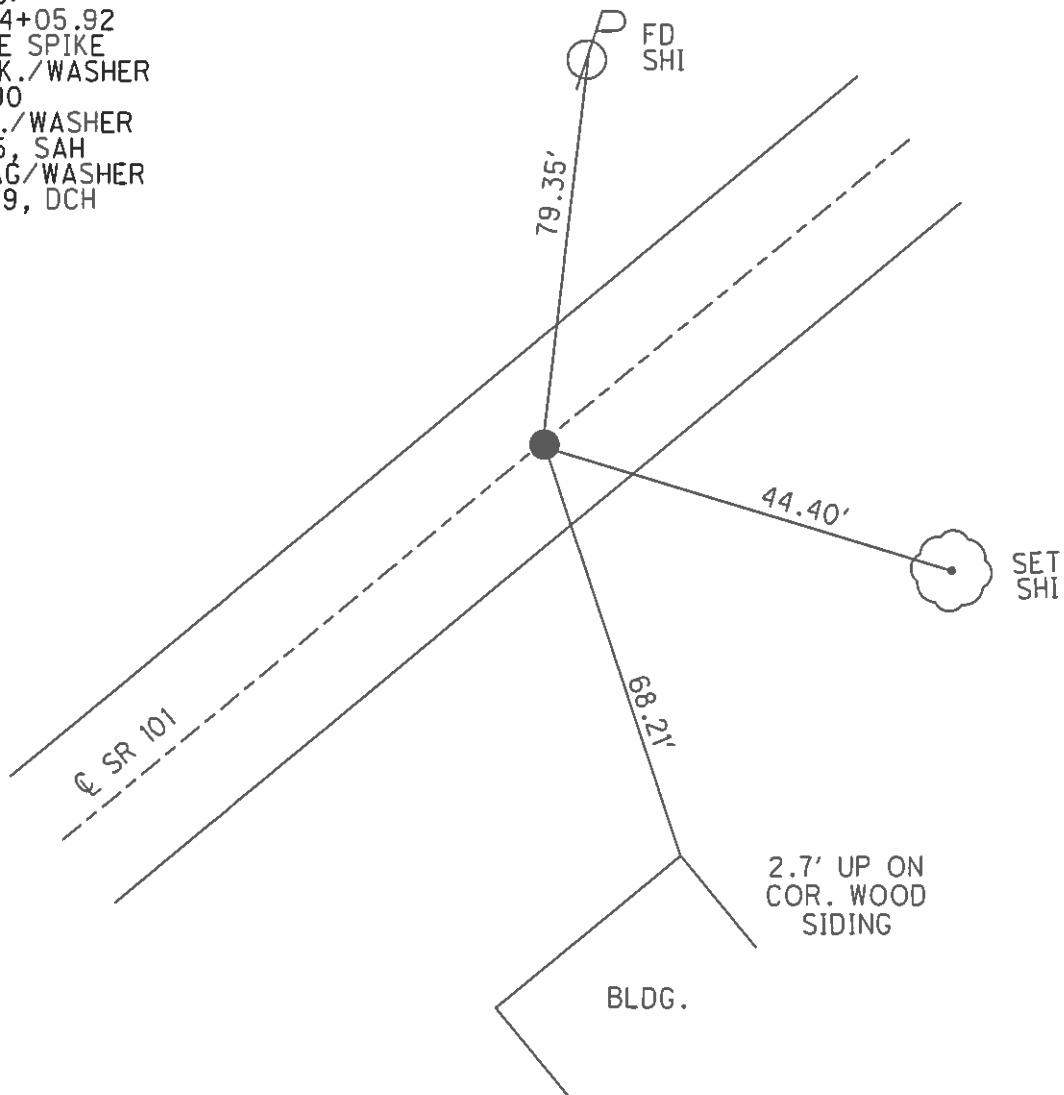
PERSONNEL _____ REFERENCE NO. 39 SHEET 17 OF 46
 NOTES HOMAN DATE 7/21/09 ROUTE SR 101
 H.C. HOMAN WEATHER SUNNY COUNTY SENECA
 R.C. ROUSOS TEMP. 75° TOWNSHIP ADAMS
 _____ SECTION 19
 _____ T 3 N R 16 E

TYPE MONUMENT P.K./WASHER
 ON SURFACE - ~~BELOW~~ ON
 LEFT - ☉ PAV'T - RIGHT ON
 - TO - EDGE PAVEMENT
 S.L.M. 494+89



GRID: NORTHING: 560572.347 EASTING: 1815060.096

RECORD:
 STA. 64+05.92
 FD MINE SPIKE
 SET P.K./WASHER
 8/27/90
 FD P.K./WASHER
 2/4/05, SAH
 SET MAG/WASHER
 10/8/09, DCH



O.D.O.T. DISTRICT 2 SURVEY OFFICE

PERSONNEL

REFERENCE NO. 39

SHEET 13 OF 41

NOTES RIPPLE

H.C. BARBOUR

R.C. GEYMAN

DATE 8/27/90

WEATHER SUNNY

TEMP. 92°

ROUTE S.R. #101

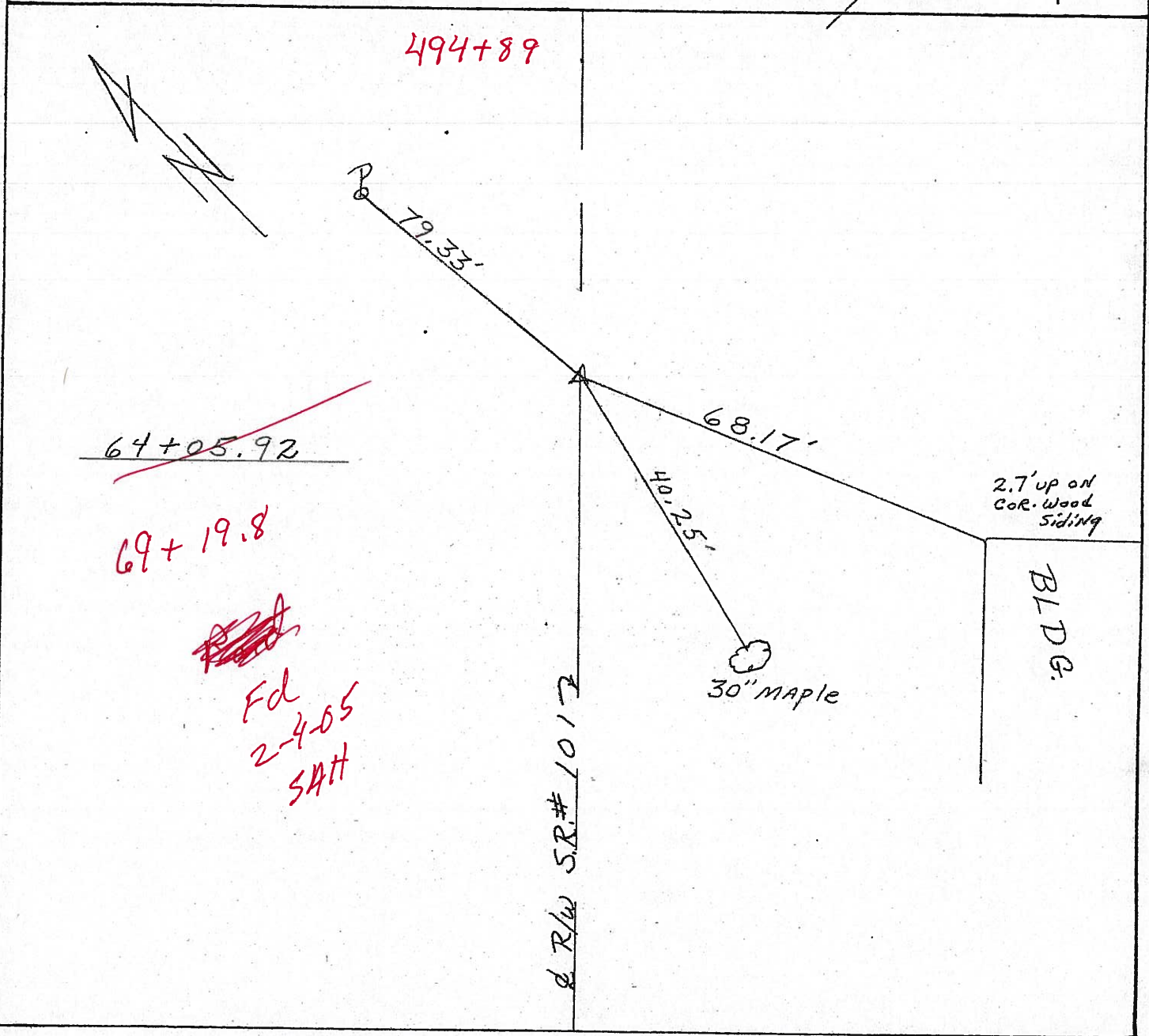
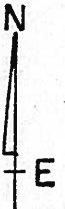
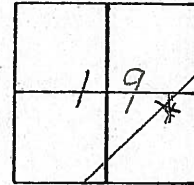
COUNTY SENECA

TOWNSHIP ADAMS

SECTION 19

T 3 N R 16 E

TYPE MONUMENT SET P.K. & WASHER
ON SURFACE - BELOW MINE SPIKE ON R/W
LEFT - CL. PAV'T. - RIGHT CL. PAV'T.
TO EDGE PAVEMENT
S.L.M. _____



O.D.O.T. DISTRICT 2 SURVEY OFFICE

PERSONNEL

REFERENCE NO. 39

SHEET 13 OF 41

NOTES RIPPLE

H.C. BARBOUR

R.C. Geyman

DATE 8/27/90

WEATHER SUNNY

TEMP. 92°

ROUTE S.R. #101

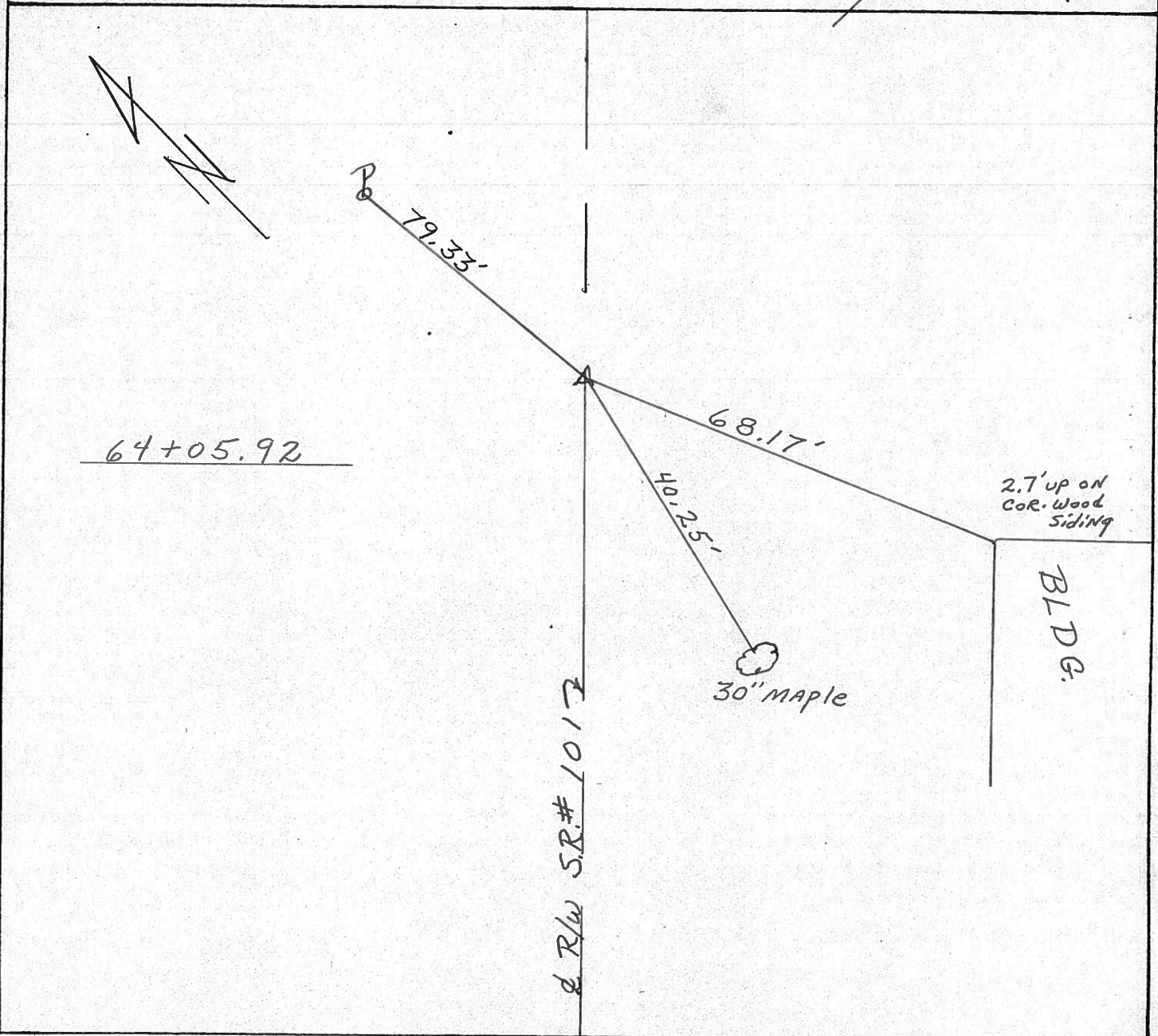
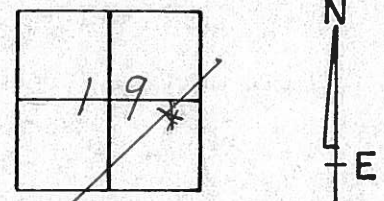
COUNTY Seneca

TOWNSHIP Adams

SECTION 19

T 3 N R 16 E

TYPE MONUMENT Set P.K. & washer
ON SURFACE - BELOW mine spike on & R/w
LEFT - ¢ Pav't. - RIGHT ¢ Pav't.
____ TO ____ EDGE PAVEMENT
S.L.M. _____



64+05.92

& R/w S.R. # 101

2.7' up on
cor. wood
siding

BLDG.

Q.D.O.T. DISTRICT 2 SURVEY OFFICE

Sht. of

County Seneca S.R. 101

Date 6-25-79

Township Adams

Weather Fair

Section 19

Temp. 60°

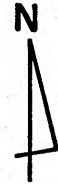
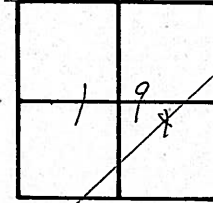
T₃N, R₁₆E

Personnel Schneider

Mosser

Barbour

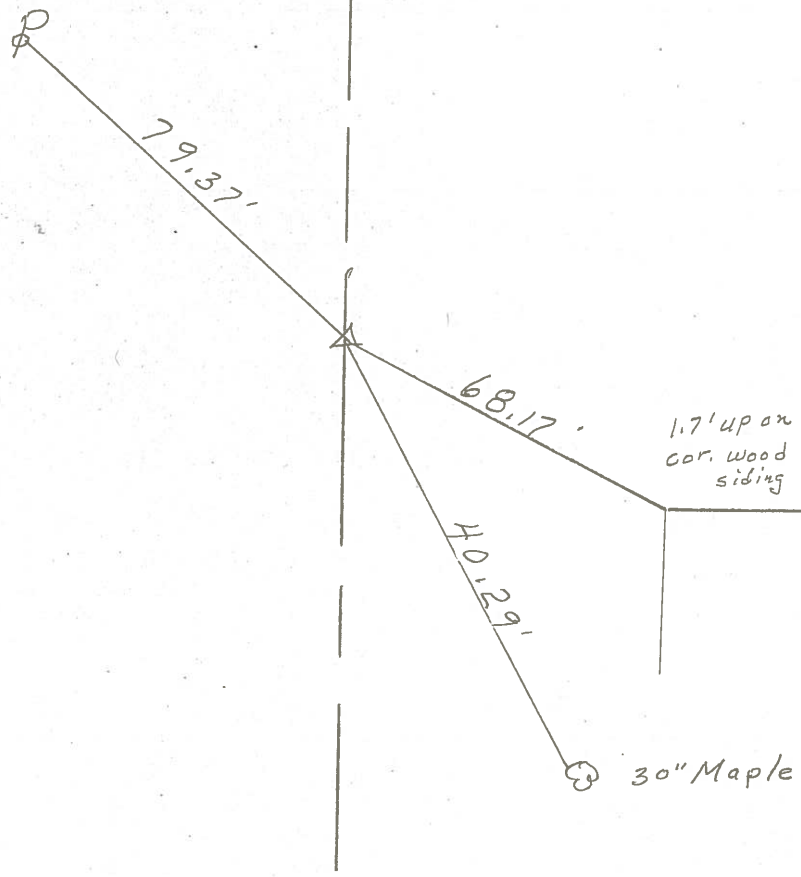
(39)



~~#39~~



⊥ S.R. # 101



64+05.92
 Mine spk. on ⊥ R/w
 on top
 Reset P.K. Nail

1.7' up on cor. wood siding

30" Maple

PERSONNEL TITLE PERSONNEL TITLE

COUNTY Seneca DATE 2-10-64

Krabill

Kowaleski

Geyman

Bruggemah

S. R. # 101

WEATHER

SEC.

TEMP.

DESCRIPTION

LEFT

CENTER LINE

RIGHT

JOB NO.

39

STA. 69+04.92

P.K.

389

End of Sec. O

Start of Sec. J

Adams Twp

28.08'

12" Maple

45.10'

12" Hickory

40.42'

30" Maple

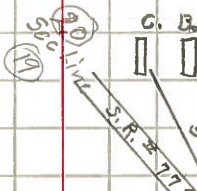


40

STA. 0+00

P.K.

389A



49.16'

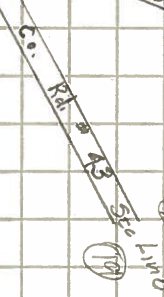
11" Maple

69.62'



49.30'

Walnut



41

STA. 1+00

R.R. Spike

390

Res.

27.12'

20.30'

Locust

22.44'

11" Maple

80.85'

Howe